

# Oil and Gas Update

---

February 2, 2026

*Energy, Equity, and the Environment Division*



# Current Applications

There are no Oil and Gas applications under review currently.

# Oil and Gas Notice Update

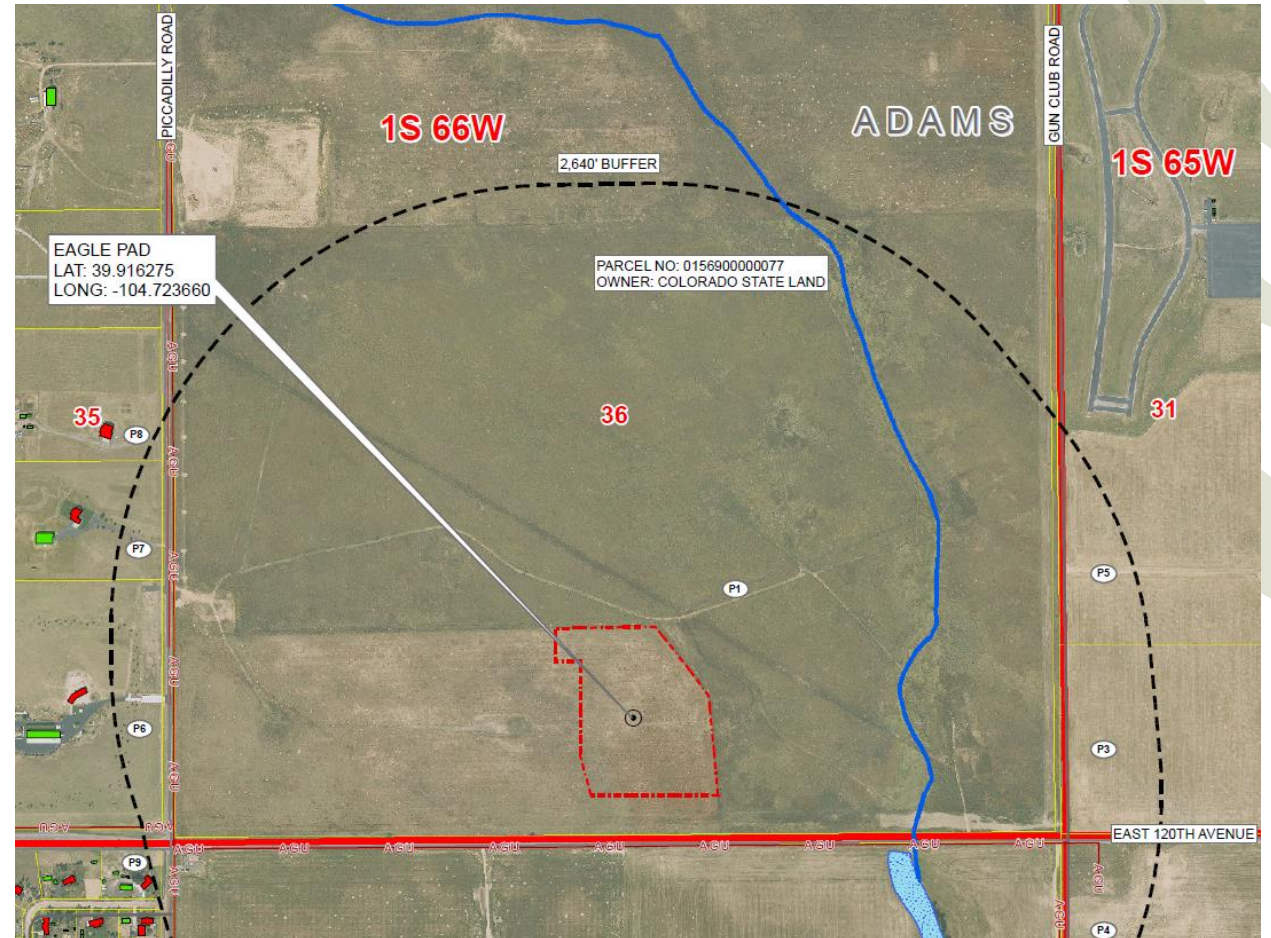
E3 received the following notices from the Colorado Energy and Carbon Management Commission (ECMC) and other related oil and gas operators in the period of December 15-January 15:

*Four separate historic releases occurred at HSR-TR Ranch 16-3 – Civitas reported the spills during plugging and abandonment and decommissioning at this oil and gas well site. Contaminated soil is removed until uncontaminated material is encountered. If groundwater is encountered, samples will be taken, and a monitoring well may be installed prior to remediation and plugging.*



# Adams County Oil and Gas Updates

E3 received an application for review from Adams County. The Eagle Pad is a proposed new Oil and Gas Facility (OGF) to allow up to 19 wells on 17.03 acres in the Agricultural-3 zone district. The site is located north of 120th Avenue between Piccadilly and Gun Club Roads.



# CDPHE Air Pollution Control Division (APCD) Public Meeting Updates

There are currently no public meeting advertisements being published for the month of February on the APCD website, as of January 16, 2026.

# Environmental Exceedance Report

**Suncor Reporting Period:** November 15-December 15

**Reportable Events:** 5

**Exceedances/Permit Violations:** 20

Start Date	Pollutant	Permit Limit/ Condition	Maximum Reported Value	Total Exceedance
29-Nov-25	SO2	15.68 lbs/hr	1767.19 lbs/hr	1751.51 lbs/hr
29-Nov-25	SO2	250 ppmv on 12-hour rolling avg	9138 ppmv	8888 ppmv
29-Nov-25	Opacity	20% on 6-in rolling avg	64%	44%
29-Nov-25	Opacity	30% for a period(s) aggregating moer than 6 min in any 60 consecutive min	64%	34%
29-Nov-25	CO	500 ppmvd	1782 ppmvd	1282 ppmvd
29-Nov-25	Opacity	30% on a 6-min block avg	64%	34%
29-Nov-25	Opacity	30% on a 3-hour rolling avg	64%	34%
29-Nov-25	CO	500 ppmvd	905 ppmvd	405 ppmvd

# Environmental Exceedance Report (continued 1)

Start Date	Pollutant	Permit Limit/ Condition	Maximum Reported Value	Total Exceedance
2-Dec-25	opacity	20% on a 6-min rolling avg	32%	12%
2-Dec-25	CO	500 ppmvd	2030 ppmvd	1530 ppmvd
2-Dec-25	CO	500 ppmvd	1030 ppmvd	530 ppmvd
2-Dec-25	CO	20% on a 6-min rolling avg	32%	12%
2-Dec-25	opacity	30% on a 6-min rolling avg	37%	7%
2-Dec-25	opacity	30% on a 6-min block avg	37%	7%
2-Dec-25	SO2	15.68 lbs/hr	74.1 lbs/hr	58.42 lbs/hr

# Environmental Exceedance Report (Continued 2)

Start Date	Pollutant	Permit Limit/ Condition	Maximum Reported Value	Total Exceedance
4-Dec-25	SO2	15.68 lbs/hr	223 lbs/hr	207.32 lbs/hr
4-Dec-25	SO2	250 ppmv	323 ppmv	73 ppmv
13-Dec-25	SO2	15.68 lbs/hr	436.2 lbs/hr	420.52 lbs/hr
13-Dec-25	SO2	250 ppmv	1283 ppmv	1033 ppmv
13-Dec-25	H2S	162 ppmv	295 ppmv	133 ppmv



# Thank you. Questions?