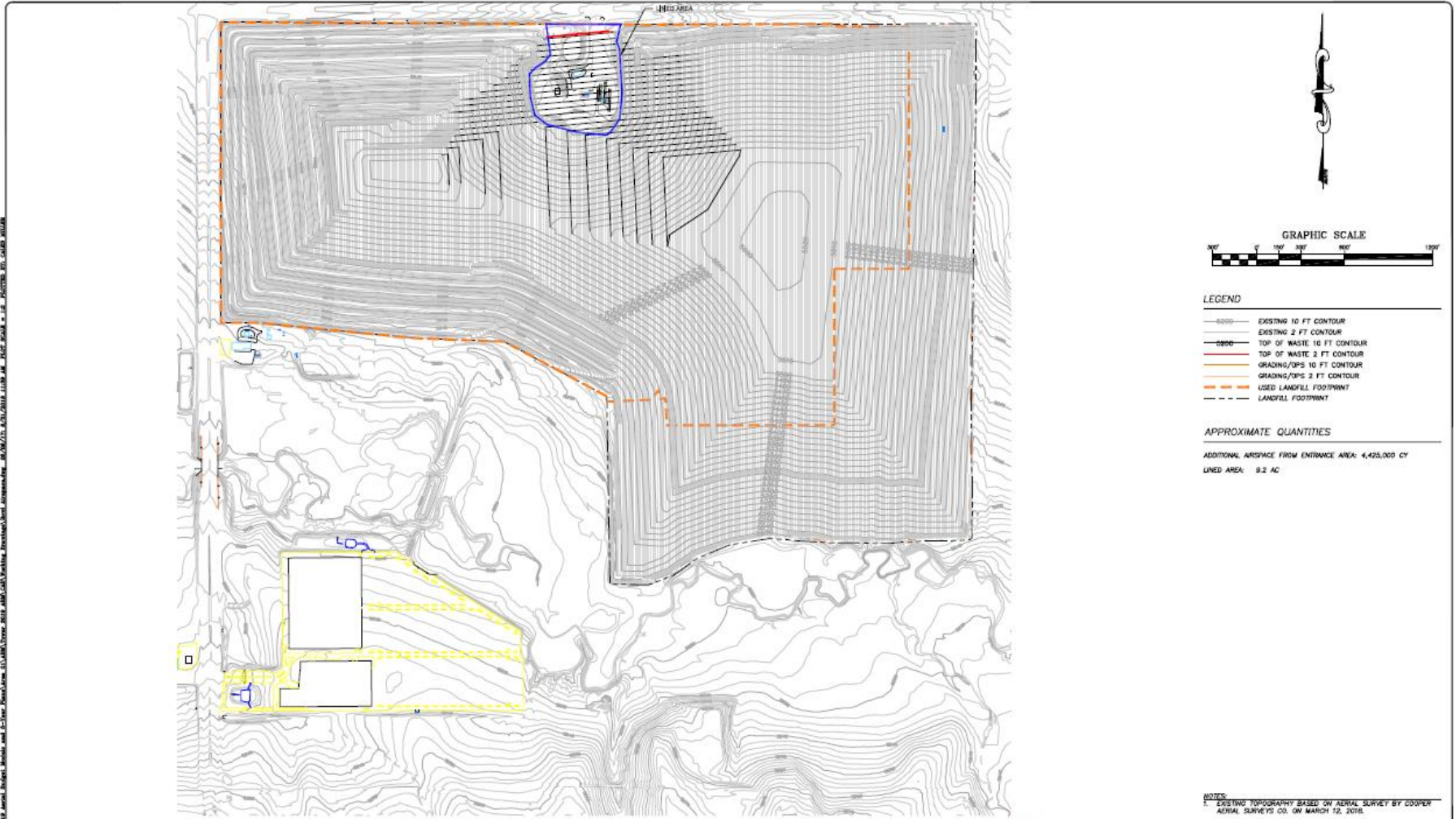


Tower Landfill Bowl Airspace



REV. NO.	DATE	DESCRIPTION	DRAWN BY	DESIGNED BY	CHECKED BY	APPROVED BY

DATE OF REVISION: _____
 DESIGNED BY: _____
 DRAWN BY: _____
 CHECKED BY: _____
 APPROVED BY: _____



TOWER LANDFILL	FIGURE NO.
—	2
ADAMS COUNTY, COLORADO	PROJECT NO.
ENTRANCE AREA AIRSPACE	AD16.1119

This drawing has not been published but rather has been prepared by Geo-Logic Associates, Inc. for use by the client named in the title block, solely in respect of the construction, operation, and maintenance of the facility named in the title block. Geo-Logic Associates, Inc. shall not be liable for the use of this drawing on any other facility or for any other purpose.

ISSUED FOR REVIEW

Tower Landfill – Bowl Area

