



2021 Concrete Flatwork Program Recommendations



Overview

- Purpose and Need
- Overall Project Goals
- Recommendations
- Funding
- Next Steps



Commerce
CITY

Purpose and Need

- This is the annual maintenance project to repair or replace damaged curb, gutter, sidewalk, concrete panels, and concrete cross pans.
 - To maintain public infrastructure and to improve community appearance by repairing and replacing broken concrete.

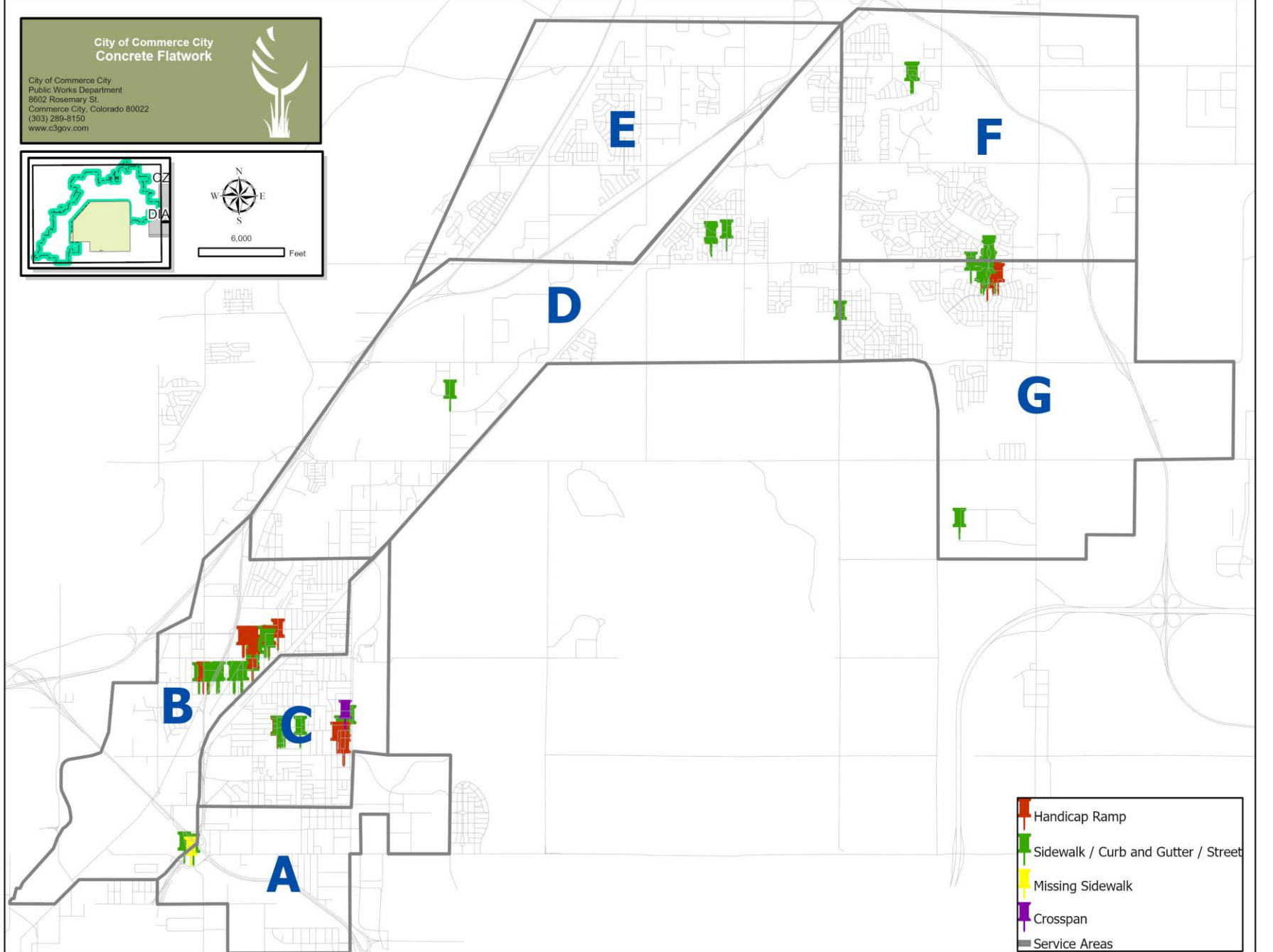
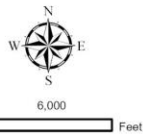
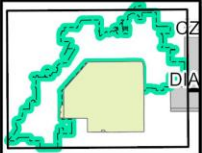


Overall Project Goals

- City is responsible for maintenance and improvements of concrete flatwork (sidewalks, curb, gutter, and handicap ramps)
- Repair damaged concrete in Pavement Management areas before mill and overlay begins
- Repair damaged concrete that has been identified through our Customer Relationship Management (CRM) system
- Replace damaged concrete street panels
- Construct missing sidewalk to improve pedestrian connections

City of Commerce City
Concrete Flatwork

City of Commerce City
Public Works Department
8602 Rosemary St.
Commerce City, Colorado 80022
(303) 289-8150
www.c3gov.com



Recommendations/Concrete Flatwork

Location	Improvement	Quantity	Unit (SY) or (LF)	Unit Cost	Estimated Cost	Fund
Holly St and 71st	HC Ramp	6.7	SY	\$168.50	\$1,128.95	Concrete Flatwork
7051 Holly St	4' Combo (Curb, Gutter, Sidewalk)	47.5	LF	\$123.00	\$5,842.50	Concrete Flatwork
7031 Holly St	4' Combo (Curb, Gutter, Sidewalk)	37.5	LF	\$123.00	\$4,612.50	Concrete Flatwork
7021 Holly St	4' Combo (Curb, Gutter, Sidewalk)	10.0	LF	\$123.00	\$1,230.00	Concrete Flatwork
70th and Holly St	HC Ramp	6.7	SY	\$168.50	\$1,128.95	Concrete Flatwork
6889 Holly St	4' Combo (Curb, Gutter, Sidewalk)	10.0	LF	\$123.00	\$1,230.00	Concrete Flatwork
6996 Holly St	4' Combo (Curb, Gutter, Sidewalk)	20.0	LF	\$123.00	\$2,460.00	Concrete Flatwork
7070 Holly St	4' Combo (Curb, Gutter, Sidewalk)	30.0	LF	\$123.00	\$3,690.00	Concrete Flatwork
7080 Holly St	Curb & Gutter	8.0	LF	\$38.00	\$304.00	Concrete Flatwork
7110 Holly St	4' Combo (Curb, Gutter, Sidewalk)	10.0	LF	\$123.00	\$1,230.00	Concrete Flatwork
71st Pl and Holly St	HC Ramp	6.7	SY	\$168.50	\$1,128.95	Concrete Flatwork
72nd Pl and Holly St	4' Combo (Curb, Gutter, Sidewalk)	10.0	LF	\$123.00	\$1,230.00	Concrete Flatwork
7134 71st Pl	Driveway	6.7	SY	\$157.00	\$1,051.90	Concrete Flatwork
69th Ave (70' East of Dexter)	4' Combo (Curb, Gutter, Sidewalk)	5.0	LF	\$123.00	\$615.00	Concrete Flatwork
69th Ave (90' East of Dexter)	4' Combo (Curb, Gutter, Sidewalk)	10.0	LF	\$123.00	\$1,230.00	Concrete Flatwork
69th and Dahlia (SW Corner)	HC Ramp	8.7	SY	\$168.50	\$1,465.95	Concrete Flatwork
69th and Dahlia (NW Corner)	HC Ramp	12.7	SY	\$168.50	\$2,139.95	Concrete Flatwork
69th and Hwy 6/85 (SE Corner)	Sidewalk	16.6	SY	\$52.50	\$871.50	Concrete Flatwork
69th (70' East of Hwy 6/85)	Sidewalk	17.3	SY	\$52.50	\$908.25	Concrete Flatwork

Recommendations/Concrete Flatwork

Location	Improvement	Quantity	Unit (SY) or (LF)	Unit Cost	Estimated Cost	Fund
69th (100' East of Hwy 6/85)	Driveway	18.7	SY	\$157.00	\$2,935.90	Concrete Flatwork
69th (130' East of Hwy 6/85)	Sidewalk	4.0	SY	\$52.50	\$210.00	Concrete Flatwork
69th and Elm	Sidewalk	18.8	SY	\$52.50	\$987.00	Concrete Flatwork
69th and Glencoe (70' W Glencoe)	Sidewalk	18.8	SY	\$52.50	\$987.00	Concrete Flatwork
69th and Glencoe (20' W Glencoe)	Curb & Gutter	43	LF	\$38.00	\$1,634.00	Concrete Flatwork
5459 69th Ave	Curb & Gutter	6	LF	\$38.00	\$228.00	Concrete Flatwork
5403 69th Ave	4' Combo (Curb, Gutter, Sidewalk)	4	LF	\$123.00	\$492.00	Concrete Flatwork
5245 69th Ave	4' Combo (Curb, Gutter, Sidewalk)	32	LF	\$123.00	\$3,936.00	Concrete Flatwork
72nd Ave at Fairfax Dr	HC Ramp	6.7	SY	\$168.50	\$1,128.95	Concrete Flatwork
72nd Ave at Holly	HC Ramp	8.9	SY	\$168.50	\$1,499.65	Concrete Flatwork
72nd Ave at Kearney (NW Corner)	Sidewalk	9.0	SY	\$52.50	\$472.50	Concrete Flatwork
72nd Ave at Kearney (NE Corner)	4' Combo (Curb, Gutter, Sidewalk)	4.0	LF	\$123.00	\$492.00	Concrete Flatwork
72nd Ave at Kearney (NE Corner)	Sidewalk	9.0	SY	\$52.50	\$472.50	Concrete Flatwork
72nd Ave at Ivy (SW Corner)	Sidewalk	11.7	SY	\$52.50	\$614.25	Concrete Flatwork
72nd Ave at Ivy (SE Corner)	Sidewalk	5.3	SY	\$52.50	\$278.25	Concrete Flatwork
72nd Ave at Ivy (SE Corner)	4' Combo (Curb, Gutter, Sidewalk)	14.0	LF	\$123.00	\$1,722.00	Concrete Flatwork
72nd Ave (100' E Jasmine)	4' Combo (Curb, Gutter, Sidewalk)	8.0	LF	\$123.00	\$984.00	Concrete Flatwork
72nd Ave at Jasmine	HC Ramp	23.0	SY	\$168.50	\$3,875.50	Concrete Flatwork
Jasmine Street	4' Combo (Curb, Gutter, Sidewalk)	773.0	LF	\$123.00	\$95,079.00	*Street Reconstruction

Recommendations/Concrete Flatwork

Location	Improvement	Quantity	Unit (SY) or (LF)	Unit Cost	Estimated Cost	Fund
64th PL and Kearney	HC Ramp	6.7	SY	\$168.50	\$1,128.95	Concrete Flatwork
6140 64th PL	Sidewalk	4.0	SY	\$52.50	\$210.00	Concrete Flatwork
6142 64th PL	Sidewalk	6.7	SY	\$52.50	\$351.75	Concrete Flatwork
6160 64th PL	4' Combo (Curb, Gutter, Sidewalk)	7.0	LF	\$123.00	\$861.00	Concrete Flatwork
6480 64th PL	4' Combo (Curb, Gutter, Sidewalk)	12.0	LF	\$123.00	\$1,476.00	Concrete Flatwork
6181 64th PL	4' Combo (Curb, Gutter, Sidewalk)	18.0	LF	\$123.00	\$2,214.00	Concrete Flatwork
6181 64th PL	Driveway	7.3	SY	\$156.50	\$1,142.45	Concrete Flatwork
6101 64th PL	Sidewalk	4.4	SY	\$52.50	\$231.00	Concrete Flatwork
65th PL (10' W Quebec)	4' Combo (Curb, Gutter, Sidewalk)	8.0	LF	\$123.00	\$984.00	Concrete Flatwork
64th PL and Porter Way	HC Ramp	13.4	SY	\$168.50	\$2,257.90	Concrete Flatwork
64th PL and Poplar (NE Corner)	HC Ramp	6.7	SY	\$168.50	\$1,128.95	Concrete Flatwork
64th PL and Poplar (NE Corner)	4' Combo (Curb, Gutter, Sidewalk)	10.0	LF	\$123.00	\$1,230.00	Concrete Flatwork
64th Ave and Poplar	HC Ramps	20.1	SY	\$168.50	\$3,386.85	Concrete Flatwork
63rd Ave and Poplar	HC Ramps	13.4	SY	\$168.50	\$2,257.90	Concrete Flatwork
64th Ave and Pontiac	HC Ramp	6.7	SY	\$168.50	\$1,128.95	Concrete Flatwork
66th Ave and Poplar	Cross Pan	6.7	SY	\$156.50	\$1,048.55	Concrete Flatwork
56th Ave (W of Dahlia)	4' Combo (Curb, Gutter, Sidewalk)	288.0	LF	\$123.00	\$35,424.00	Sidewalk Connectivity
56th Ave (E of Colorado)	4' Combo (Curb, Gutter, Sidewalk)	193.0	LF	\$123.00	\$23,739.00	Sidewalk Connectivity
Reunion Pkwy & Truckee (NE Corner)	HC Ramp	38.0	SY	\$168.50	\$6,403.00	Concrete Flatwork
Reunion Pkwy & Truckee (NE Corner)	Cross Pan	20.2	SY	\$156.50	\$3,161.30	Concrete Flatwork
Reunion Pkwy & Truckee (SE Corner)	HC Ramp	64.0	SY	\$168.50	\$10,784.00	Concrete Flatwork
Reunion Pkwy & Truckee (SE Corner)	Sidewalk	19.0	SY	\$52.50	\$997.50	Concrete Flatwork
Reunion Pkwy & Truckee (SE Corner)	Curb & Gutter	10.0	LF	\$38.00	\$380.00	Concrete Flatwork

Recommendations/Concrete Flatwork

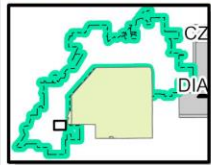
Location	Improvement	Quantity	Unit (SY) or (LF)	Unit Cost	Estimated Cost	Fund
Reunion Pkwy & Truckee (Alley)	Sidewalk	10.0	SY	\$52.50	\$525.00	Concrete Flatwork
Reunion Pkwy & Truckee (Alley)	Cross Pan	3.9	SY	\$156.50	\$610.35	Concrete Flatwork
Reunion Pkwy & Truckee (Alley)	Curb & Gutter	14.0	LF	\$38.00	\$532.00	Concrete Flatwork
Reunion Pkwy & SouthLawn Cir	Curb & Gutter	15.0	LF	\$38.00	\$570.00	Concrete Flatwork
Reunion Pkwy & SouthLawn Cir	Sidewalk	7.8	SY	\$52.50	\$409.50	Concrete Flatwork
Reunion Pkwy & SouthLawn Cir	HC Ramp	31.3	SY	\$168.50	\$5,274.05	Concrete Flatwork
Reunion Pkwy & Telluride (NW Corner)	HC Ramp	5.1	SY	\$168.50	\$859.35	Concrete Flatwork
Reunion Pkwy & Telluride (SW Corner)	HC Ramp	5.1	SY	\$168.50	\$859.35	Concrete Flatwork
Reunion Pkwy & Telluride (10' South)	Curb & Gutter	9.0	LF	\$38.00	\$342.00	Concrete Flatwork
Telluride and Reunion Pkwy (Alley)	Alley	36.3	SY	\$156.50	\$5,680.95	Concrete Flatwork
Reunion Pkwy & SouthLawn Cir	HC Ramp	42.2	SY	\$168.50	\$7,110.70	Concrete Flatwork
Reunion Pkwy & SouthLawn Cir	Sidewalk	8.1	SY	\$52.50	\$425.25	Concrete Flatwork
Median Southlawn Cir & Reunion Pkwy	Curb & Gutter	58.0	LF	\$38.00	\$2,204.00	Concrete Flatwork
Median Truckee Wy & Reunion Pkwy	Curb & Gutter	81.0	LF	\$38.00	\$3,078.00	Concrete Flatwork
Median 103rd Ave & Reunion Pkwy	Curb & Gutter	96.0	LF	\$38.00	\$3,648.00	Concrete Flatwork
103rd Ave & Reunion Pkwy	Sidewalk	5.0	SY	\$52.50	\$262.50	Concrete Flatwork
103rd Ave & Reunion Pkwy	Sidewalk	3.5	SY	\$52.50	\$183.75	Concrete Flatwork
Reunion Pkwy & Telluride Wy	Sidewalk	2.8	SY	\$52.50	\$147.00	Concrete Flatwork
Reunion Pkwy & Truckee Wy	Sidewalk	2.8	SY	\$52.50	\$147.00	Concrete Flatwork
Reunion Pkwy & Truckee Wy	Sidewalk	8.3	SY	\$52.50	\$435.75	Concrete Flatwork

Recommendations/Concrete Flatwork

Location	Improvement	Quantity	Unit (SY) or (LF)	Unit Cost	Estimated Cost	Fund
Reunion Pkwy & Truckee Wy	Sidewalk	2.8	SY	\$52.50	\$147.00	Concrete Flatwork
10249 Southlawn Circle	Curb & Gutter	10.0	LF	\$38.00	\$380.00	Concrete Flatwork
10179 Southlawn Circle	Curb & Gutter	10.0	LF	\$38.00	\$380.00	Concrete Flatwork
Southlawn Pkwy & Circle (NE Corner)	HC Ramp	15.0	SY	\$168.50	\$2,527.50	Concrete Flatwork
Southlawn Pkwy & Circle (SE Corner)	HC Ramp	15.0	SY	\$168.50	\$2,527.50	Concrete Flatwork
10129 Southlawn Circle	Sidewalk	2.8	SY	\$52.50	\$147.00	Concrete Flatwork
Yosemite St & 92nd Ave	Curb & Gutter	20.0	LF	\$38.00	\$760.00	Concrete Flatwork
16434 117th Ave (CRM)	Curb & Gutter	20.0	LF	\$38.00	\$760.00	Concrete Flatwork
16434 117th Ave (CRM)	Sidewalk	6.1	SY	\$52.50	\$320.25	Concrete Flatwork
16414 117th Ave (CRM)	Sidewalk	3.3	SY	\$52.50	\$173.25	Concrete Flatwork
102nd & Salida Ave (CRM)	Sidewalk	5.6	SY	\$52.50	\$294.00	Concrete Flatwork
9851 Chambers Dr	Sidewalk	8.3	SY	\$52.50	\$435.75	Concrete Flatwork
81st St & Quintero	Sidewalk	5.6	SY	\$52.50	\$294.00	Concrete Flatwork
10495 Wheeling St (CRM)	Sidewalk	9.5	SY	\$52.50	\$498.75	Concrete Flatwork
10457 Vaughn St (CRM)	Sidewalk	2.0	SY	\$52.50	\$105.00	Concrete Flatwork
10467 Vaughn St	Sidewalk	6.2	SY	\$52.50	\$325.50	Concrete Flatwork
10447 Vaughn St	Sidewalk	6.7	SY	\$52.50	\$351.75	Concrete Flatwork
10477 Vaughn St	Sidewalk	6.9	SY	\$52.50	\$362.25	Concrete Flatwork
Total =					\$297,547.95	

City of Commerce City Concrete Flatwork

City of Commerce City
Public Works Department
8602 Rosemary St
Commerce City, Colorado 80022
(303) 289-8150
www.c3gov.com



400 Feet

64TH PL MONACO - KEARNEY E 64TH PL AND
KEARNEY ST ADA RAMP NE CORNER 6.6'X4'

6140 64TH PL SW 9X4

64TH PL MONACO - KEARNEY E 64TH PL AND
KEARNEY ST ADA RAMP SE CORNER 6.6'X4'

6480 64TH PL
12' 4' COMBO

E 64TH PL & POPLAR NE CORNER 6.6'X4'
S SIDE OF INTERSECTION 10'X4' COMBO

E 64TH AVE & POPLAR ST ADA RAMP NE CORNERS 6.6'X4'

E 64TH AVE & PONTIAC ADA
RAMP NW CORNER 6.6'X4'

E 64TH AVE & POPLAR ST ADA
RAMP SE CORNERS 6.6'X4'

E 63RD AVE & POPLAR ADA
RAMP NW CORNERS 6.6'X4'

E 63RD AVE & POPLAR ADA
RAMP NE CORNERS 6.6'X4'

Handicap Ramp

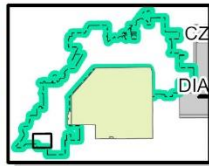
Sidewalk / Curb and Gutter / Street

Crosspan

CORE CITY

City of Commerce City Concrete Flatwork

City of Commerce City
Public Works Department
8602 Rosemary St
Commerce City, Colorado 80022
(303) 289-8150
www.c3gov.com



610

Feet

E 69TH AVE SOUTHSIDE 70' EAST
OF DEXTER ST 5' 4' COMBO

69TH AVE AND DAHILA ST SW
CORNER ADA RAMP 13'X6'

69TH AVE AND HWY 6 & 85
SE CORNER SW 23' X 6.5'

69TH AND ELM ST SOUTH
SIDE SW 4' COMBO

100' EAST OF ELM ST
DRIVEWAY 26' X 6.5'

69TH AND GLENCOE ST SOUTH SIDE
20' WEST OF GLENCOE 43 LF C&G

69TH AND GLENCOE ST SOUTH SIDE
70' WEST OF GLENCOE SW 18' X 4'

5403 E 69TH AVE
4' 4' COMBO

5459 E 69TH
AVE 6 LF C&G

70TH AVE AND HOLLY ST ADA
RAMPS NW CORNER 5'X 5.5'

6989 HOLLY ST
10' 4' COMBO

7031 HOLLY ST SW 37.5' 4' COMBO

7051 HOLLY ST SW
47.5' 4' COMBO

7070 HOLLY ST 30' 4' COMBO

71ST AND HOLLY ST
ADA RAMPS NW CORNERS

71ST PL AND HOLLY ST ADA
RAMP NE CORNERS 13'X9'

71ST PL AND HOLLY ST
SE CORNER 10' 4' COMBO

72ND ADA RAMPS FAIRFAX
DR SE CORNER 6'X5'

HOLLY ST SE
CORNER 8'X5'

HOLLY ST SW
CORNER 8'X5'

71ST PL AND HOLLY ST
SE CORNER 10' 4' COMBO

7110 HOLLY ST 10' 4' COMBO

7080 HOLLY
ST 8LF C&G

7021 HOLLY ST
SW 10' 4' COMBO

70TH AVE AND HOLLY ST ADA RAMPS SW CORNER 5'X 5.5'

6996 HOLLY ST
20' 4' COMBO

72ND AND IVY SE CORNER 6'X8' SW S
SIDE 4.6' 4' COMBO 8'X6' 4'COMBO

IVY ST SW
CORNER 15'X7'

JASMINE HANDI CAP
RAMP SW CORNER 13'X8'

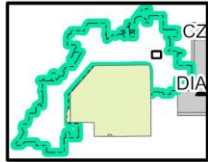
Handicap Ramp

Sidewalk / Curb and Gutter / Street

FAIRFAX PARK AREA

City of Commerce City Concrete Flatwork

City of Commerce City
Public Works Department
8602 Rosemary St.
Commerce City, Colorado 80022
(303) 289-8150
www.c3gov.com



300
Feet

103RD AVE REUNION PKWY
SE CORNER SW COMBO 9'X5'

60' S OF 103RD AVE E SIDE
OF REUNION PKY SW 5'X5'

103RD AVE REUNION PKWY MEDIAN
S OF 103RD AVE 95.6 LF OF C&G

103RD AVE REUNION PKWY W SIDE
65' N OF 103RD AVE SW 5.6'X5.6'

REUNION PARKWAY & TRUCKEE WY NE CORNER ADA
RAMP 19'X18' X PAN 10'X8' & 9.6' X 10.6'

E SIDE OF REUNION PKY 45' N OF TRUCKEE WY SW 5'X5'

E 102ND & SALIDA
AVE SW 10'X5'

REUNION PKWY AND TELLURIDE WY
NW CORNER ADA RAMP 7.6'X6'

MEDIAN S OF TRUCKEE WY &
REUNION PKWY 80.6 LF C&G

MEDIAN N OF SOUTHLAWN CIR
& REUNION PKWY 58 LF C&G

NB REUNION PKWY AND SOUTHLAWN CIR 15 LF C&G 6.6'X10' COMBO

10179 SOUTHLAWN
CIRCLE 101F C&G

10249 SOUTHLAWN
CIRCLE 101F C&G

ALLEY WAY BETWEEN TELLURIDE WY &
SOUTHLAWN CIR 23'X8.6' AND 23'X 5.6'

SOUTHLAWN PKWY & CIRCLE ADA
RAMP NE CORNER 17' X 8'

ALLEY WAY BETWEEN TRUCKEE WY & SOUTHLAWN
CIR. SW 18'X5' DRIVE PAN 51'X71' C&G 14 LF

TRUCKEE WY & SOUTHLAWN CIR. SE
CORNER ADA RAMP 26.6'X10.6'

E OF 10129 SOUTHLAWN
CIRCLE SW 5'X5'

SOUTHLAWN PKWY & CIRCLE ADA
RAMP SE CORNER 17' X 8'

ADA RAMP @ REUNION PKWY AND SOUTHLAWN
CIR 26'X 14.6' & COMBO 7.6'X9.6

Handicap Ramp

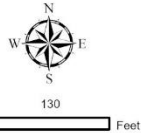
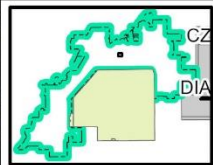
Sidewalk / Curb and Gutter / Street

REUNION

Copyright © 2015

City of Commerce City
Concrete Flatwork

City of Commerce City
Public Works Department
8602 Rosemary St.
Commerce City, Colorado 80022
(303) 289-8150
www.c3gov.com



10477 VAUGHN ST SW
5.5'X 4' & 10'X4'

10467 VAUGHN
ST SW 14'X 4'

10457 VAUGHN
ST SW 4.5'X4'

10447 VAUGHN
ST SW 15'X 4'

10495 WHEELING ST SW
5'X4.5' & 14'X4.5'

E 104TH DR

E 104TH AVE

Reunion

POTOMOC FARMS

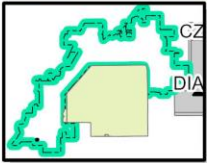
Handicap Ramp

Sidewalk / Curb and Gutter / Street

City of Commerce City
Concrete Flatwork



City of Commerce City
Public Works Department
8602 Rosemary St.
Commerce City, Colorado 80022
(303) 289-8150
www.c3gov.com



70

Feet

56TH AVE AND E OF COLORADO
BLVD. 193' OF 4' COMBO

Sand Creek

E 56TH AVE

56TH AVE AND W OF DAHLIA
ST 288' OF 4' COMBO

MISSING SIDEWALK - 56TH
AVE - WEST OF DAHLIA, 481'

DAHLIA ST

56TH INDUSTRIAL PARK

Sidewalk / Curb and Gutter / Street

Missing Sidewalk

Recommendations/Concrete Panels

Location	Construction Type	Area (SY)	Unit Price	Total
<u>Quebec Pkwy - North bound</u>				
150' North of 58th Ave center lane 12'x15'	Remove & Replace Concrete Panels	20	\$ 158.00	\$ 3,160.00
225' North Of 58th Ave centerlane	Remove & Replace Concrete Panels	40	\$ 158.00	\$ 6,320.00
225' South of 60th Ave center lane	Remove & Replace Concrete Panels	16	\$ 158.00	\$ 2,528.00
			Subtotal	\$ 12,008.00
<u>104th Ave - West Bound</u>				
300' West of Walden St center lane	Remove & Replace Concrete Panels	17	\$ 158.00	\$ 2,686.00
150' West of Tower Rd right lane	Remove & Replace Concrete Panels	16	\$ 158.00	\$ 2,528.00
300' West of Tower Rd right lane	Remove & Replace Concrete Panels	32	\$ 158.00	\$ 5,056.00
200' East of Yampa St right lane	Remove & Replace Concrete Panels	16	\$ 158.00	\$ 2,528.00
200' East of Yampa center lane	Remove & Replace Concrete Panels	32	\$ 158.00	\$ 5,056.00
200' East of Yampa left lane	Remove & Replace Concrete Panels	32	\$ 158.00	\$ 5,056.00
			Subtotal	\$ 22,910.00
			Traffic Control	\$ 20,000.00
			Mobilization	\$ 20,000.00
			Total	\$ 74,918.00



Concrete Panels

Legend

E 60th Ave

Quebec Street 225'
south of 60th Avenue
16 SY (Center Lane)

E 59th Pl

E 59th Ave

Quebec Street 225'
north of 58th Avenue
40 SY (Center Lane)

Quebec Street 150'
north of 58th Avenue
20 SY (Center Lane)

Poplar St

Quebec St

E 58th Ave

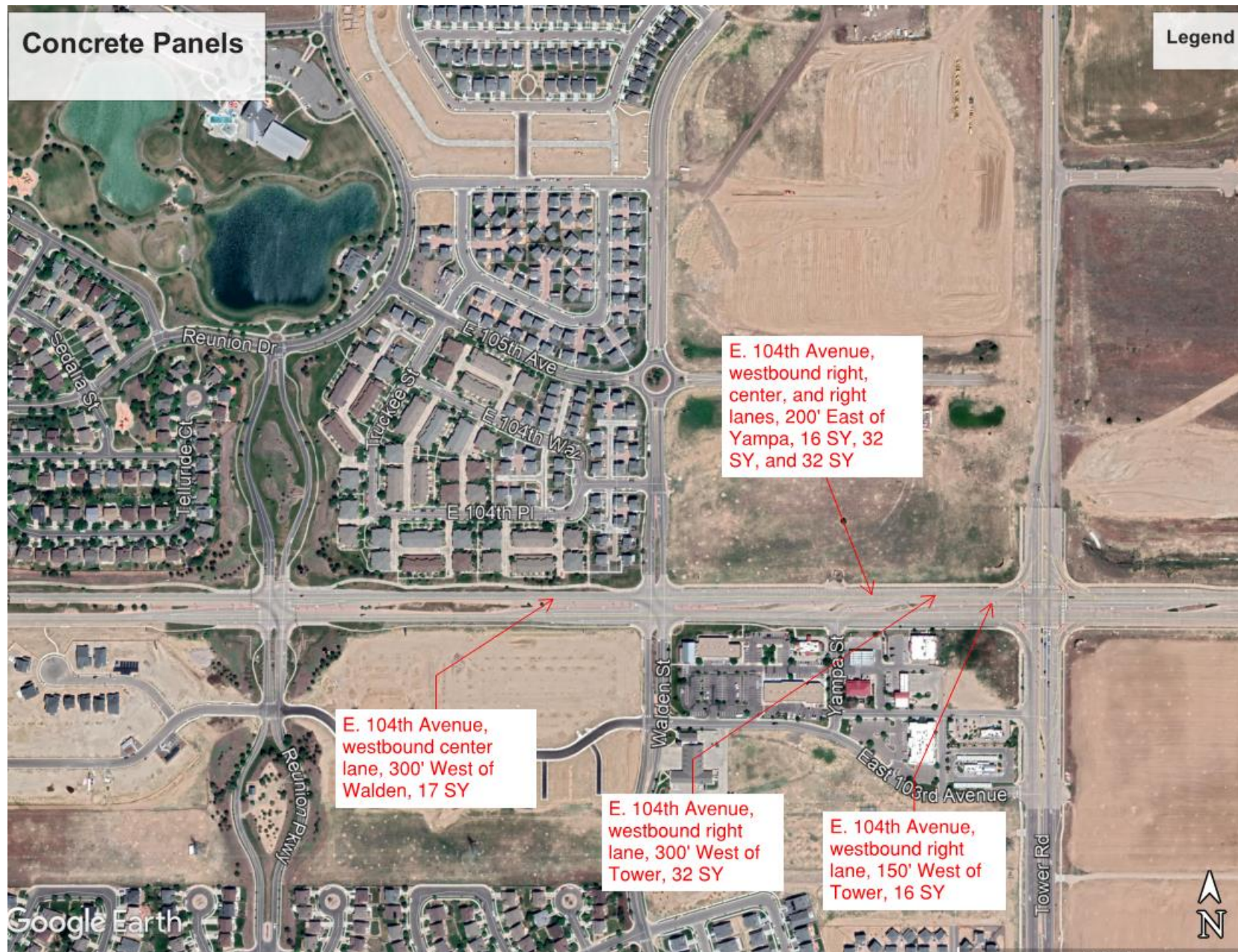
Google Earth



Commerce
CITY

Concrete Panels

Legend



Funding

Improvement Type	Estimated Cost (\$)
Concrete Flatwork	\$143,305.95
Sidewalk Connectivity	\$154,242.00
Concrete Panel Replacement	\$74,918.00
Total Estimate Cost	\$372,465.95
Total Estimated Cost (Minus Jasmine Street)	\$277,386.95

Available Funding Sources

- 2021 Concrete Flatwork Budget \$165,000
 - 2020 Concrete Flatwork Budget Carryover \$ 22,120
 - 2021 Sidewalk Connectivity Budget \$ 96,000
 - Total Budget \$283,120
- Note: Propose to take Jasmine Street missing sidewalk out of flatwork program and move to the Street Reconstruction budget. This makes the total estimated cost for 2021 Concrete Flatwork Program \$277,386.95

Next Steps

- Extend Current Contract w/Silva
- Award Contract April 2021
- Begin Work May 2021



Questions?

