

ATTACHMENT A

Second Creek Interceptor Alignment
Located Within Commerce City Boundaries

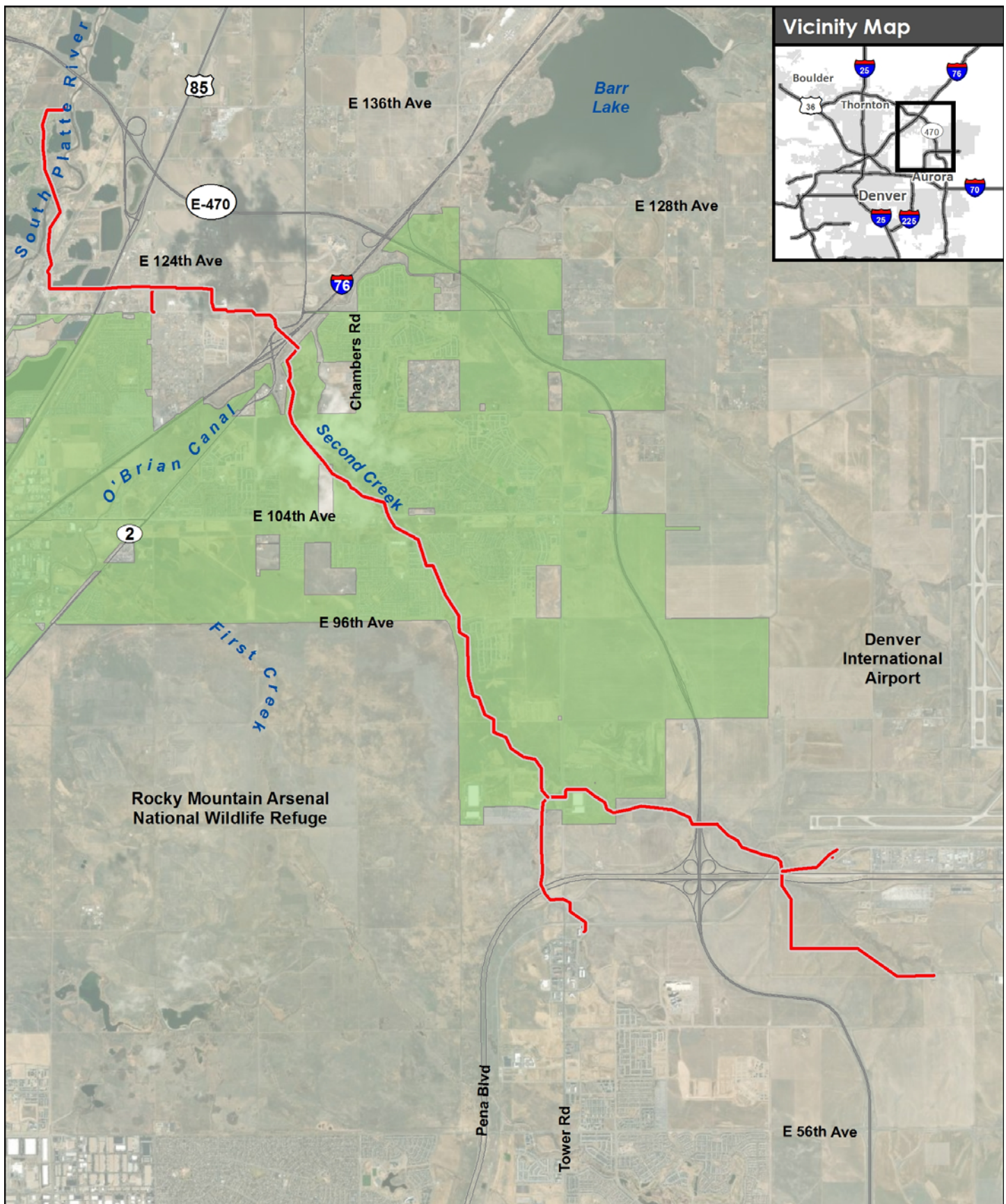
INTERGOVERNMENTAL AGREEMENT (IGA)

Between the City of Commerce City and the

Metro Wastewater Reclamation District

RE: Second Creek Interceptor

IGA associated with Commerce City Areas and Activities of State Interest (AASI or 1041)
Permit for the Metro Wastewater Reclamation District Second Creek Interceptor (PAR 1232)



Attachment A

- Second Creek Interceptor Recommended Alignment*
- City of Commerce City



Projection: Lambert Conformal Conic
State Plane Colorado North Feet
North American Datum of 1983 (2011)

Basemap source: ESRI and its data partners

*Alignment based on current design and subject to design refinement

ATTACHMENT B

Second Creek Interceptor Alignment and Associated
Gravel Access Roads Consistent with
Commerce City Trail System

INTERGOVERNMENTAL AGREEMENT (IGA)

Between the City of Commerce City and the

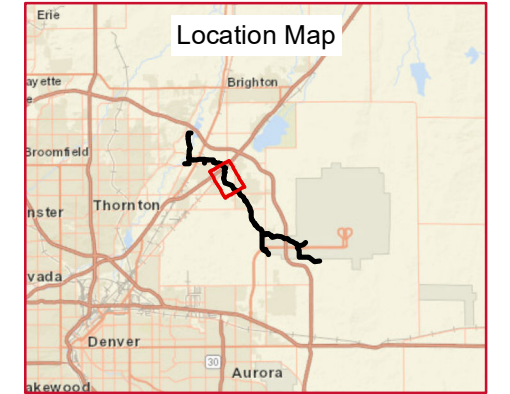
Metro Wastewater Reclamation District

RE: Second Creek Interceptor

IGA associated with Commerce City Areas and Activities of State Interest (AASI or 1041)
Permit for the Metro Wastewater Reclamation District Second Creek Interceptor (PAR 1232)

Proposed Access Routes
And Areas for Second Creek
Interceptor Located In
Commerce City
Page 1 of 3

- Second Creek Interceptor
Recommended Alignment
- Second Creek Interceptor
Recommended Alignment Gravel
Access Road

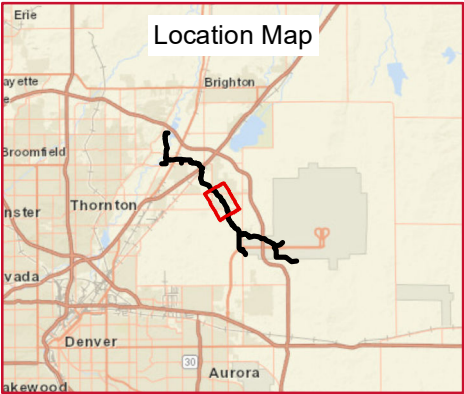
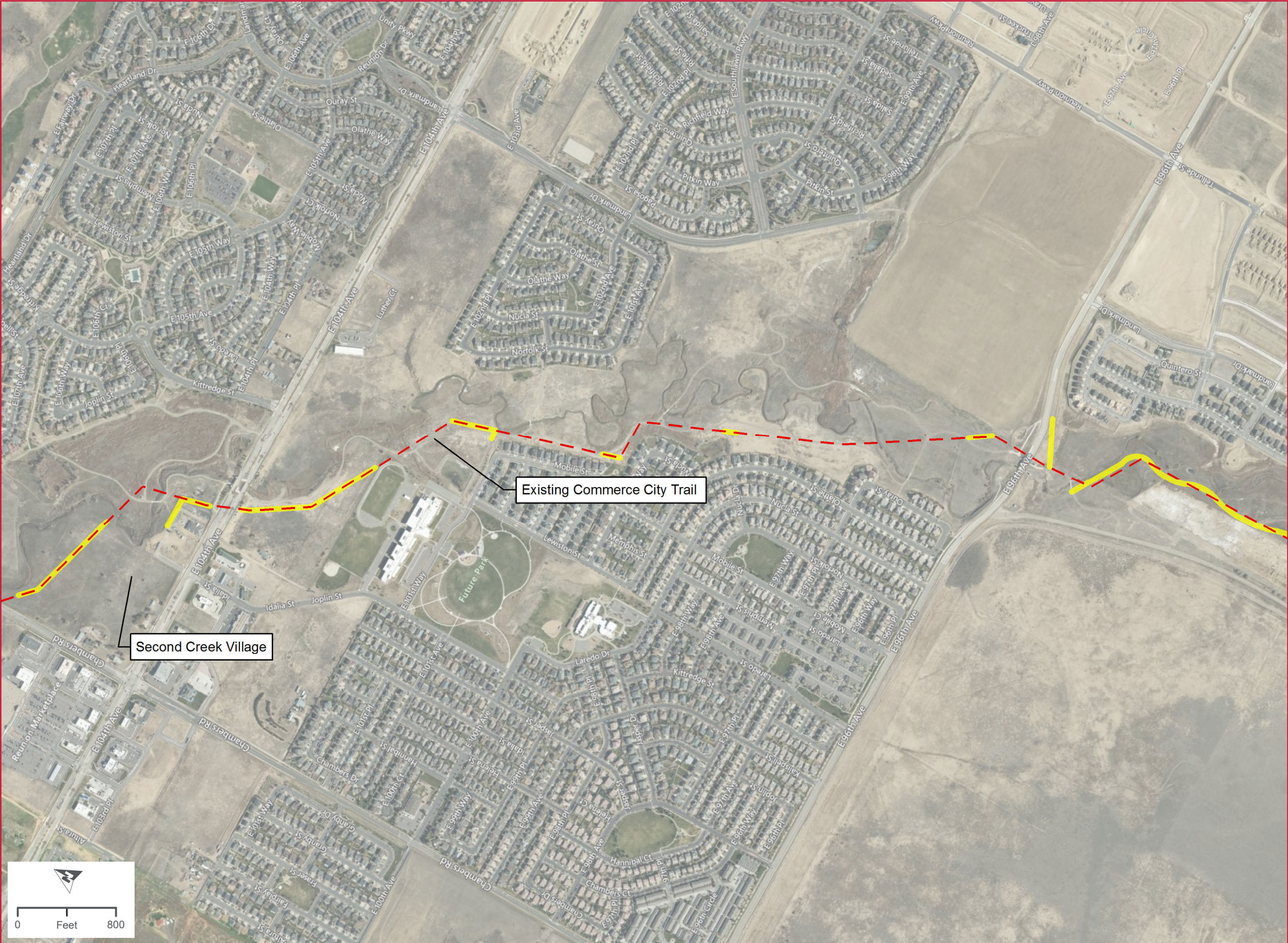


DATA SOURCES: MWRD, City and County of Denver, Adams County, National Wetlands Inventory, Commerce City, HDR



Proposed Access Routes
And Areas for Second Creek
Interceptor Located In
Commerce City
Page 2 of 3

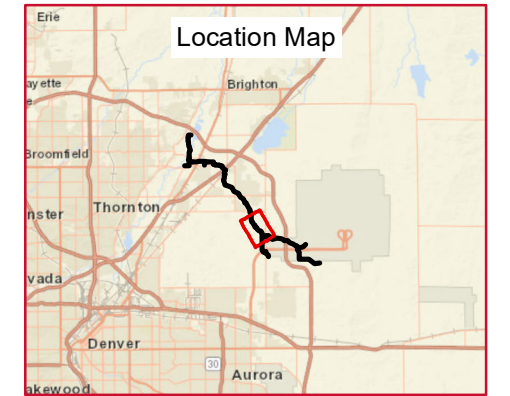
- Second Creek Interceptor
Recommended Alignment
- Second Creek Interceptor
Recommended Alignment Gravel
Access Road



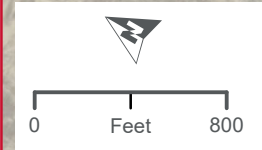
DATA SOURCES: MWRD, City and County of Denver, Adams County, National Wetlands Inventory, Commerce City, HDR



- Second Creek Interceptor
Recommended Alignment
- Second Creek Interceptor
Recommended Alignment Gravel
Access Road



DATA SOURCES: MWRD, City and County of Denver, Adams County, National Wetlands Inventory, Commerce City, HDR



ATTACHMENT C

Access Road Specifications

INTERGOVERNMENTAL AGREEMENT (IGA)

Between the City of Commerce City and the

Metro Wastewater Reclamation District

RE: Second Creek Interceptor

IGA associated with Commerce City Areas and Activities of State Interest (AASI or 1041)
Permit for the Metro Wastewater Reclamation District Second Creek Interceptor (PAR 1232)

**SECTION 02865
SURFACING MATERIALS**

PART 1: GENERAL

- 1.1 RELATED DOCUMENTS: Drawings and general provisions of the Construction Contract, Division - 1 Specification sections, apply to work of this section.
- 1.2 DESCRIPTION: The work of this section consists of furnishing and installing miscellaneous soft surface materials.
- 1.3 RELATED WORK:
- A. Earthwork – Section 02200
- 1.4 SUBMITTALS
- A. Submit 1 cubic foot sample of crusher fines material at least 24 hours prior to delivery to site.
- B. Product data on stabilizer.

PART 2: PRODUCTS

2.1 CRUSHER FINES TRAIL

- A. Crusher Fines material shall consist of fine mineral fragments resulting from rock crushing operations and shall meet the gradation shown in the following table:

<u>Sieve Size</u>	<u>Percent Passing</u>
1"	100
¾"	100
½"	92
3/8"	84
#4	63
#8	45
#40	23
#100	14
#200	9.7

- B. Geotextile fabric shall be Mirafi 140 N or approved equal.
- C. Soil Stabilizer
The stabilizing agent for all stabilized areas shall be SoilShield-LS or approved equal. The stabilizing agent shall be a nonflammable concentrated polyvinyl acrylic copolymer with a formulation containing a minimum of 60% solids which may be diluted for application at job site. After drying, the copolymer shall form a colorless, transparent micro-plastic like film to agglomerate particles and allow exchange of air and moisture. The product shall have a minimum effective service life of at least two years, provided surface is maintained according to manufacturer's recommendations. When cured, the copolymer emulsion shall not

re-emulsify and shall be biodegradable and non-toxic to plant and animal life. After application and drying, a core of the treated section shall be able to maintain a portion of its shape, elasticity, and a portion of its strength after being submerged in water for a 24 hour period.

Contractor shall furnish, if requested, signed copies of a compliance statement certifying that the copolymer complies with all governing specifications including weight per gallon, solids, PH, container size, and stating name or trade name of copolymer. The stabilizing agent shall meet the following specifications:

Color White to off white, colorless when cured.

Form Liquid

Weight 9.1 pounds per gallon

PH 4 to 5.05

Solids 60%

Flammability Non-flammable

Flash point open cup None

Storage Life Do not freeze. Repeated freezing and thawing will cause the product to break down.

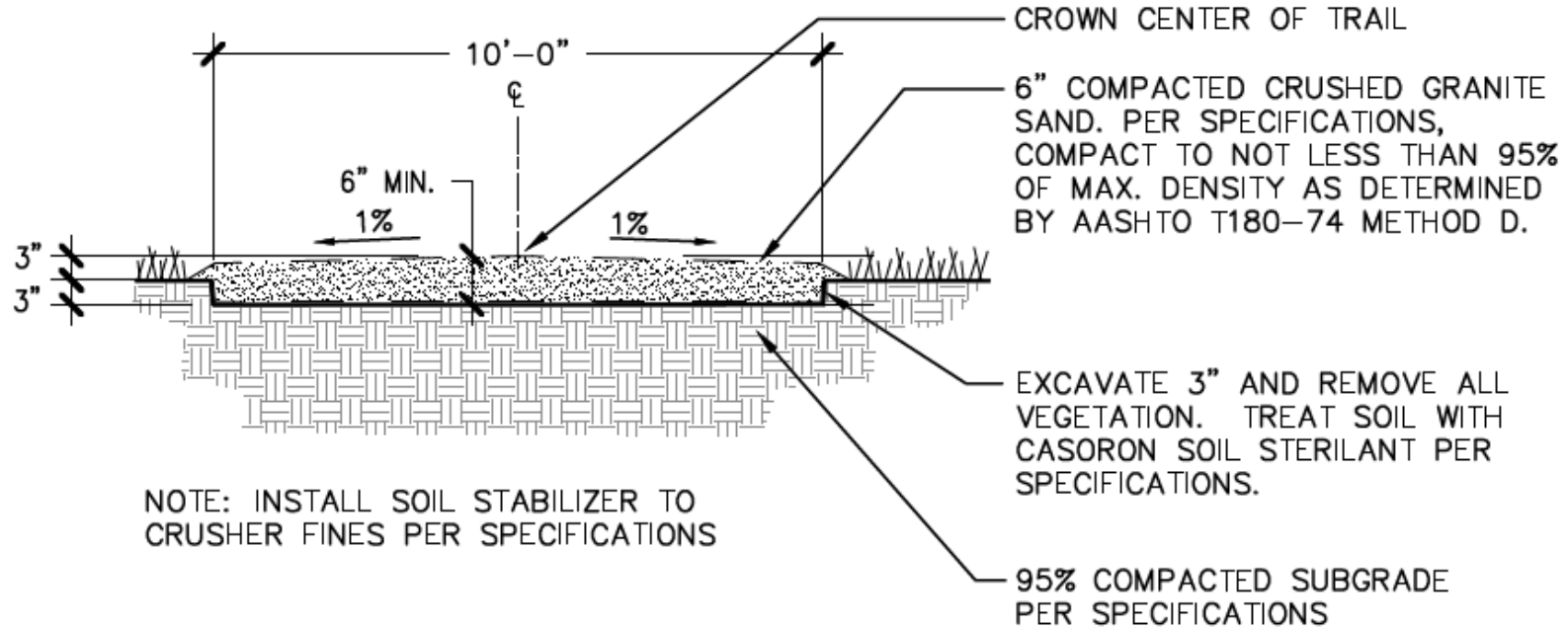
PART 3: EXECUTION

3.1 INSTALLATION OF CRUSHER FINES TRAIL:

- A. Examine final grades and installation conditions. Do not start construction of crusher fines surface until unsatisfactory conditions are corrected and approved by the Construction Manager.
- B. Prepare and compact subgrade to 95% Standard Proctor density.
- C. Place specified geotextile fabric over entire prepared surface, overlapping fabric ends by 6 inches.
- D. Fill area with crusher fines to finish grade, min. 4 inches compacted thickness. Place in one lift, compacting the layer with a vibratory roller or other suitable compaction equipment.
- E. The stabilizing agent shall be diluted with water at the ratio of 20:1 and shall be applied over the surface of all stabilized areas at the rate of 60 to 100 square feet per one (1) gallon. Refer to manufacturers application recommendations.

3.3 CLEAN UP

- A. Maintain a neat and orderly work site at all times.
- B. Upon completion of site work, clean up area, remove tools, equipment, materials and debris.



1 CRUSHER FINES TRAIL

NTS