

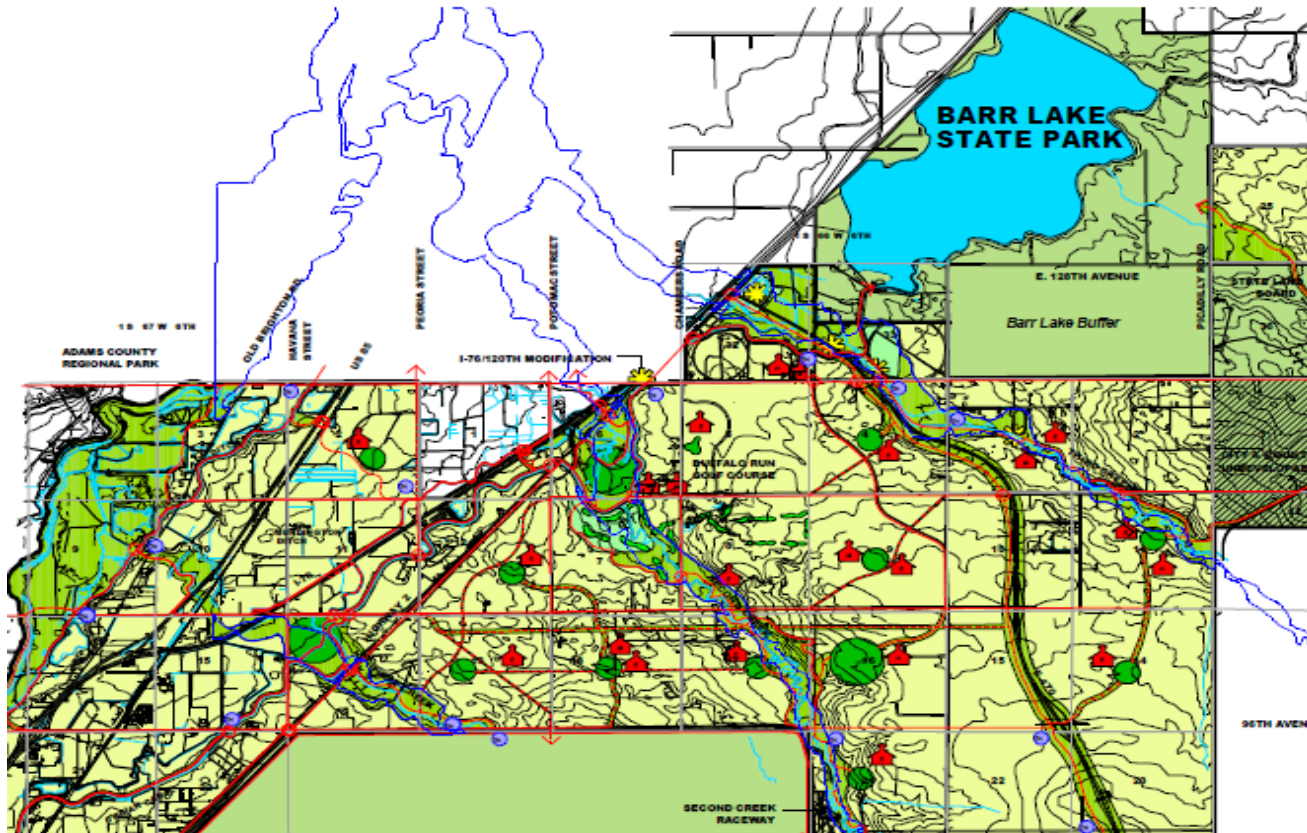


Trails Update

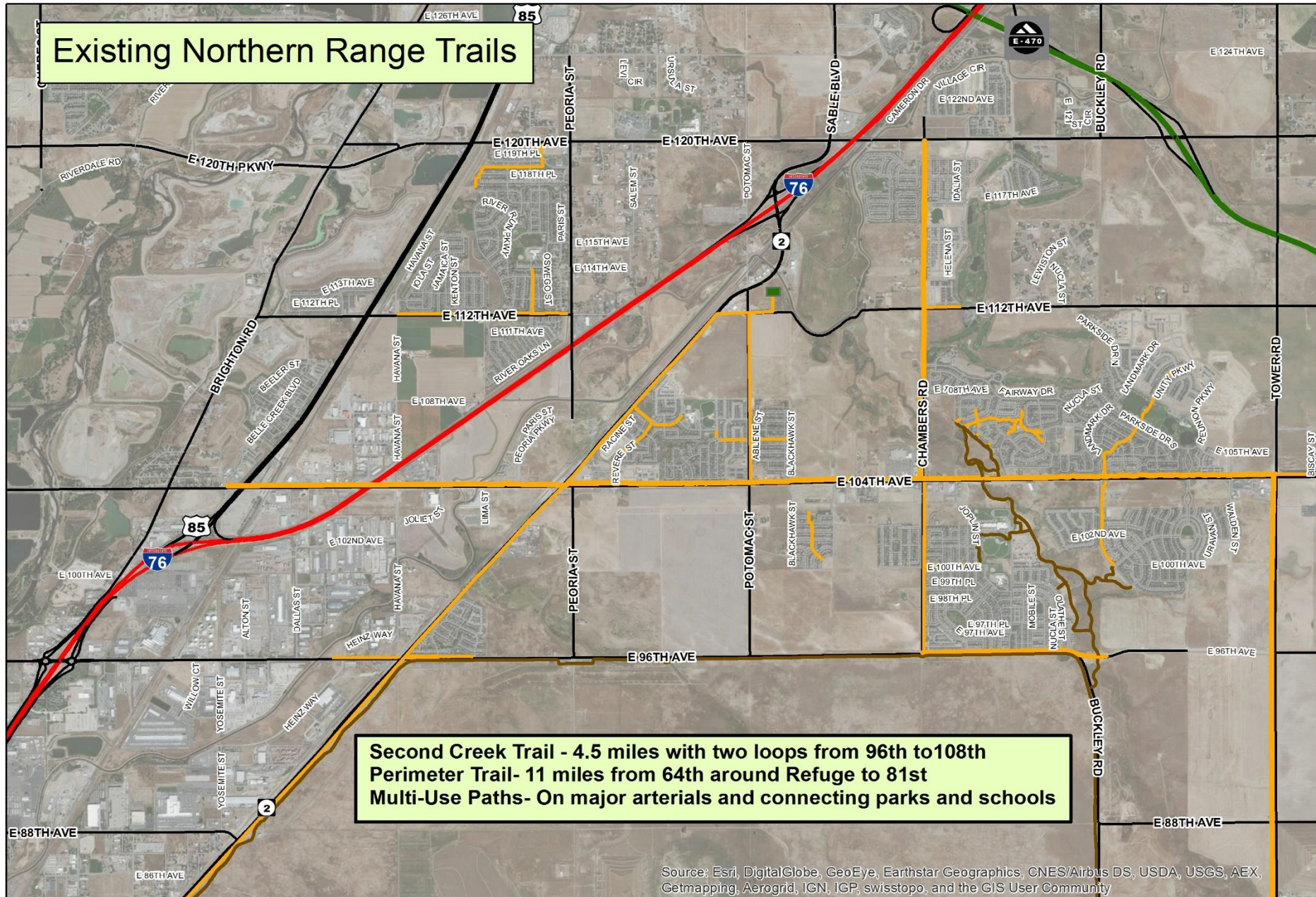
Parks, Recreation and Golf Advisory Committee
October 20, 2020

Trail Connections

- The Prairieways Action Plan includes trails throughout the Northern Range
 - Adopted by City Council in 1999
 - Neighborhood/ School/ Park site connections (Greenway Links)
 - Multi-use Paths (along major arterials)
 - Open Space Trails



Existing Northern Range Trails



0 0.5 1 2 Miles

— Multi-Use Path — Existing Trail



Trail Connections

- Multi-use Paths
 - Backbone of the trail system
 - 12' wide grid pattern
 - Need to be constructed when roads are built to full capacity
 - In PTOS master plan but also in Transportation Plan as they are a part of the road section
 - Create connectivity



Trail Connections

- Open Space Trails (Creek Corridors)
 - 1st, 2nd, and 3rd Creek
 - Second Creek is the current priority
 - Regional trail that will connect to the South Platte and the High Line Canal
 - Developing portions of the city are near this corridor
 - Challenges: areas of flood plain that have not been dedicated to the city, the 112th Ave. buildout, and the Chambers subgrade crossing as Chambers has not been built out yet
 - Opportunities: new Metro Wastewater pipeline and associated service road



Trail Connections

- Open Space Trails (Creek Corridors)
 - 1st, 2nd, and 3rd Creek
 - No development near Third Creek yet
 - First Creek
 - Major drainage infrastructure needed to connect flows
 - Drainage master plan must be built out
 - Not much residential development near First Creek



Trail Connections

- Greenway Links (built by developers)
 - Constructed when roads are built
 - Connect neighborhood to neighborhood, parks, and schools
 - Overall goal to create connectivity
 - Several miles currently exist



Trail Connections

- Canal Trails
 - Utilize existing ditch maintenance roads with improvements
 - Grading, crusher fines, signage, benches, trash cans, gates
 - O'Brian Canal Trail
 - Making some progress but challenges exist including ownership, right-of-way, and drainage infrastructure that is not constructed yet
 - Necessitates working with FRICO, CDOT, UPRR, and private landowners



Regional Trail Connections

- Sand Creek Regional Greenway
 - Approximately 4 miles in Commerce City (concrete surface) is complete after more than 20 years.
 - 14 miles total from Commerce City through Denver to Aurora
 - Trailheads at 52nd and Ivy and 56th and Dahlia
- Fernald Trail
 - Approximately 1 mile in length
 - Connects to the South Platte River Trail
 - Trailhead at the new commuter rail station at 70th and Colorado
- South Platte River Greenway
 - Over 30 miles
 - Adams County South Platte Coalition



Next Phase of Trail Planning & Development

- Connect as many residents as possible to Bison Ridge Recreation Center and the Second Creek Trail
 - Social trails become connections (Buffalo Highlands, Buffalo Mesa, Fronterra)
 - Construct additional portions of Second Creek Trail
- Continue working with PW to create more connections from the Walk Bike Fit plan in the historic city



Northern Range Trails

- Timelines
 - No timeline on O'Brian Canal Trail segments as we are still working with FRICO
 - Remaining segments depend on 112th Ave. construction and Second Creek drainage improvements and ownership transfer.
 - Metro Wastewater will build some portions of the Second Creek Trail between 2021 and 2023.
 - Potomac St. will serve as a connection south until the Second Creek Trail is constructed north of 108th.



Northern Range Trails

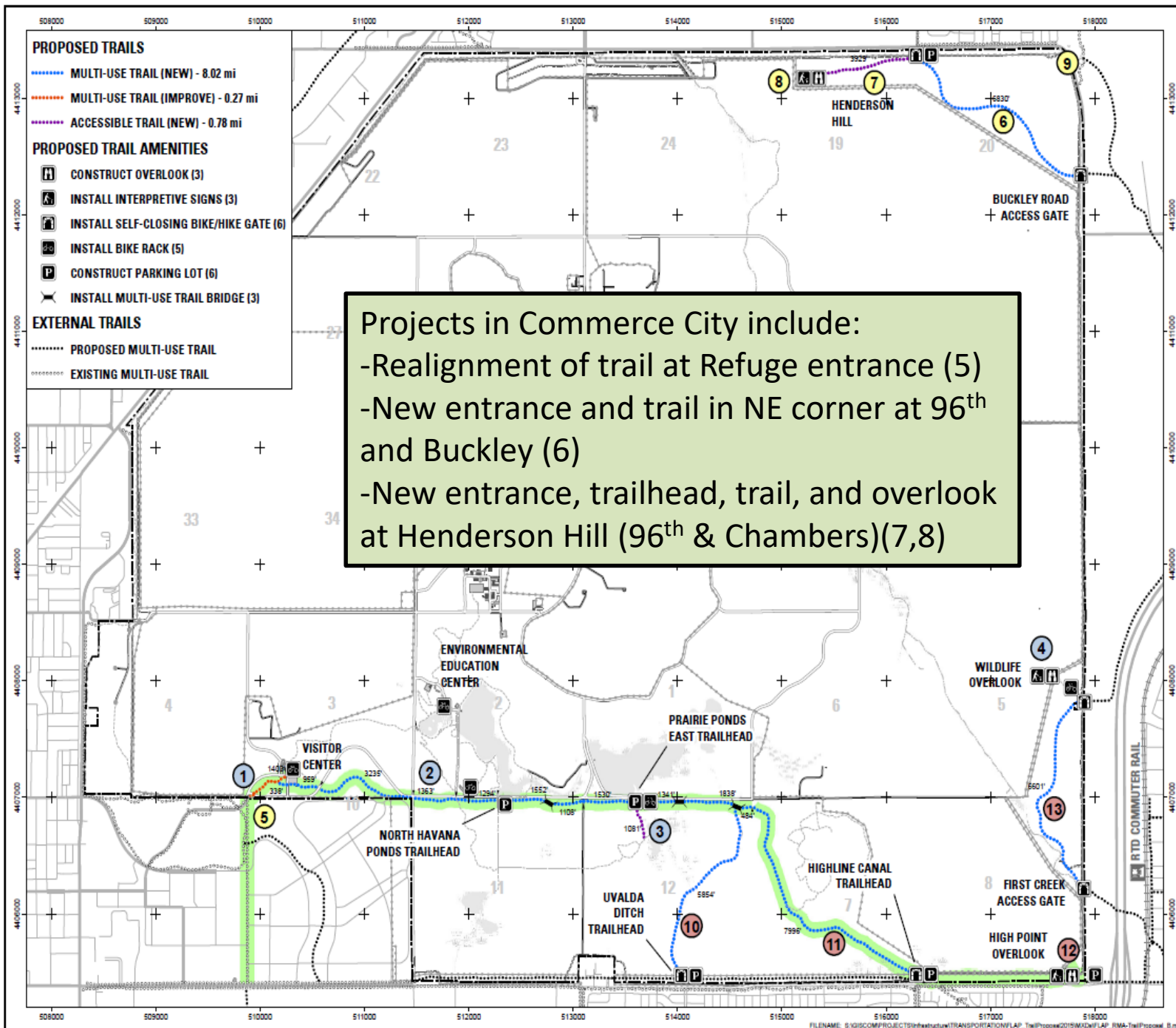
- FLAP- Federal Lands Access Program
 - Goal is to increase access to federal lands
- Commerce City working with U.S. Fish and Wildlife Service at the RMANWR, Denver, and Adams County.
- Construction is underway and should be completed by mid-November.

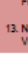

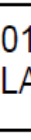
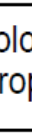


Northern Range Trails

- FLAP projects in Commerce City include:
 - Modify existing trail leading to the Refuge to accommodate the new archway entrance
 - Two new entrances to the Refuge at the northeast corner: 96th and Chambers and just south of 96th and Buckley
 - Trail connections from new entrances to a new overlook at Henderson Hill





REFERENCE DRAWINGS	
DRAWING NO.	TITLE
NOTES	
1.	CONSTRUCT NEW GRAND ARCHWAY ENTRANCE EQUIPPED WITH 4' SLIDING SECURITY GATE
2.	NEW TRAIL FROM VISITOR CENTER TO POND STREET (2.8 MILES)
3.	CONSTRUCT NEW FULLY ACCESSIBLE TRAIL AUTO TOUR ROUTE TO ROAD & GUN CLUB W (0.1 MILES)
4.	CONVERT EXISTING STRUCTURES TO NEW VIEWING STATION AND INTERPRETIVE STRU
5.	MODIFY EXISTING GATEWAY TRAIL AT RIAN ENTRANCE
6.	NEW TRAIL FROM BUCKLEY ROAD TO HEND HILL GATE (1.3 MILES)
7.	CONSTRUCT NEW FULL ACCESSIBLE TRAIL 96TH AVE/CHAMBERS ST. TO NEW HENDERS OVERLOOK (0.5 MILES)
8.	NEW HENDERSON HILL OVERLOOK
9.	REPLACE CHAINLINK FENCE WITH SPLIT RA
10.	CONVERT EXISTING NATIVE ROAD TO NEW DITCH TRAIL (1.2 MILES)
11.	CONVERT EXISTING NATIVE ROAD TO NEW CANAL TRAIL (1.5 MILES)
12.	CONSTRUCT NEW HIGH POINT OVERLOOK & INTERPRETIVE STRUCTURES. REPLACE CH FENCE WITH SPLIT RAIL
13.	NEW TRAIL FROM FIRST CREEK TO NEW W VIEWING STATION (1.3 MILES)
<div> PROPOSED ROUTE of ROCKY MOUNTAIN GREE</div> <div> TRANSVERSE MERCATOR PROJECT UTM ZONE 13N NORTH AMERICAN DATUM 1983</div>	
C	3/24/16 MK/NK FINAL PROPOSAL
B	10/22/16 MK/DL FIRST REVISION
A	5/14/14 MK/TR INITIAL CONCEPT
REV	DATE BY CHK DESCRIPTION
ROCKY MOUNTAIN ARSENAL NATIONAL WILDLIFE REFUGE Commerce City, Colorado	
2016 Colorado FLAP Proposal	
<div> </div>	
SCALE: 1:30000	DATE
DRAWN: M. Kallowski	2/23/16
DESIGNED: Kallowski	10/22/14
CHECKED: N. Kessler	2/24/16
SOFTWARE: ArcGIS 10.3.1	
	SHEET

Funding

- CIP account for Northern Range Trail Connections created in 2015
- Second Creek pedestrian bridge connecting Buckley Ranch to Second Creek Elementary/ Stuart Middle School completed in 2018 funded through this account
- Approximately \$1.85 million remains in the account.



Questions?

