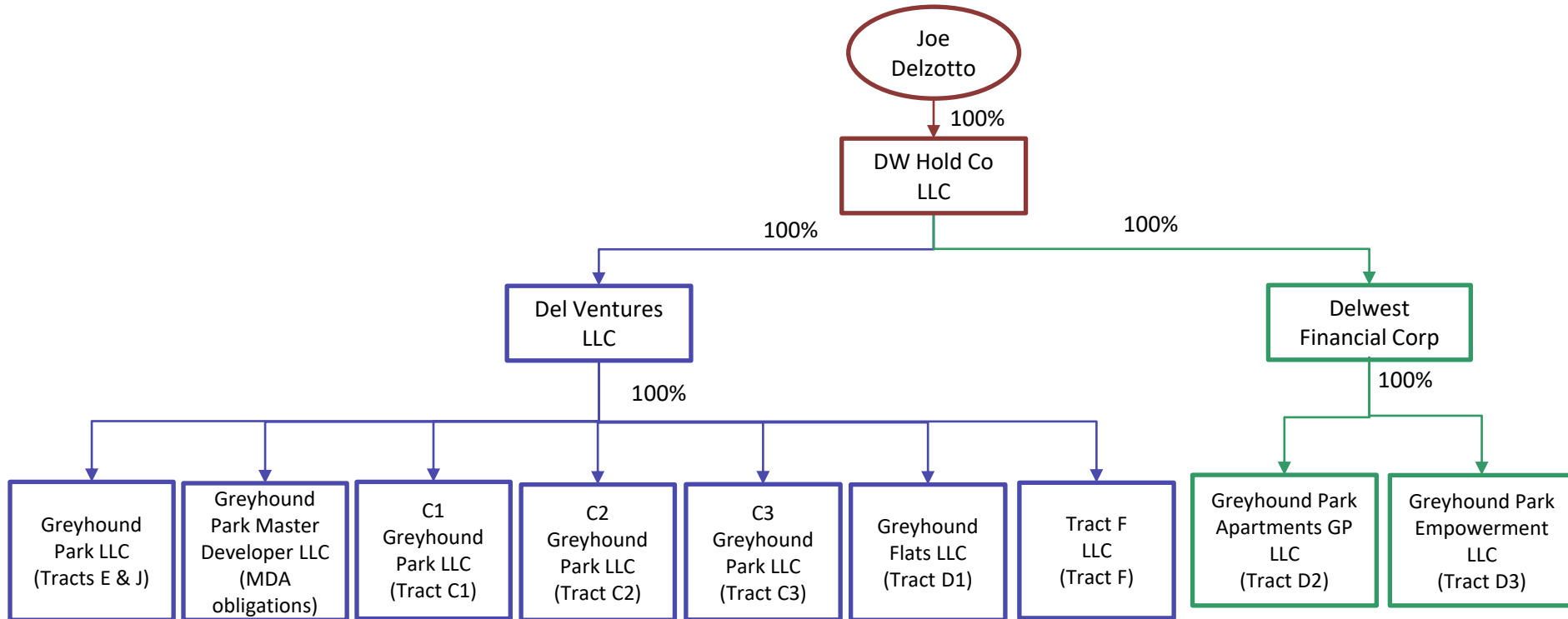


# GREYHOUND PARK LAND TAKEDOWN



1. Greyhound Park Master Developer LLC will be assigned, prior to closing, the obligations under the MDA
2. Tracts C1, C2, C3, D1 F, D2, and D3 will be conveyed directly from CCURA at closing to the designated LLC on the structure chart below
3. CCURA will convey E and J at closing to Greyhound Park LLC. Upon receipt of title to Tracts E & J, Greyhound Park LLC will convey those tracts to the HOA
4. Tract D3 will no longer be donated by CCURA, but the ownership entity will contribute its proportionate share of the \$9,500,000 escrow at closing
5. Greyhound Park Master Developer will be the entity contracting with the GC (Crossland Construction)
6. Greyhound Park LLC will remain as a signatory to the PIA