

*Oedipus, Inc.*TM
Empirical Data Services

***Canna
City***

**7150 Highway 85
Commerce City, CO 80022**

**Retail Marijuana
Store License**

OedipusTM, Inc.

Empirical Data Services

5 November 2019

P.O. BOX 1012
LAFAYETTE, CO 80026
303 661 0638
303 604 2862 FAX

Marijuana Licensing Authority
Commerce City, Colorado

Re: Petition/Opinion Poll to Determine the Desires
of the Defined Neighborhood in the Application of:

Yuma Way, LLC, dba Canna City
7150 Highway 85, Commerce City, CO 80022
Retail Marijuana Store License

- PETITION & TELEPHONE
SURVEYS
 - Liquor & Beer Licensir
 - Rezoning
 - Opinion Poll
 - Venue
 - Special Tax Districts
- LIQUOR LICENSE SITE &
ECONOMIC ANALYSIS

PETITION/OPINION POLL PROCEDURE

1. Under the direction and control of Oedipus, Inc. management, the Oedipus, Inc. employee was briefed on the application.
2. The employee carried a clipboard with the following:
 - A. A map provided by the City Clerk's office of the area denoting the proposed location of the license and the boundaries of the defined neighborhood;
 - B. Petitions allowing individuals contacted to indicate their opinion with instructions and qualifications for signing;
 - C. A stat sheet to record the opinion of those not signing and not-at-businesses or not-at-homes.
4. Business and residential petitioning was performed by Oedipus, Inc. on 11, 12, 13 and 16 October 2019 within the ½-mile radius surrounding the proposed license location as defined by the City Clerk's office of Commerce City (see map). The circulation packets have a cover map, and the areas in which each petition circulation/polling took place are outlined in highlighter. Included in this Report is a master circulation map outlining all areas where circulation/polling was conducted.
3. All individuals were screened to identify them as a party-in-interest, and were asked their opinion after they had been informed of the applicant, site location, and type of license being applied for. These opinions were recorded on the petition format.
4. Two (2) petition packets (one packet representing businesses, one packet representing residences), together with a Summary Letter and this Report were prefiled via hand-delivery on 18 October 2019 with Ms. Tiffany McGraw, Licensing Coordinator for Commerce City, to comply with the prefiling deadline.

PETITION/OPINION POLL RESULTS

1. **Total Doorknocks:**

Not-at-Homes and/or Business Owners/Managers Not Available	103
Not Qualified to Sign	10
Preferred to Not Participate	82
Parties in Interest that Participated	158
Deleted Signatures	<u>14</u>
Total Base Figure	367

2. **Qualified Contacts:**

A. **Signatures**

Signatures Favoring Issuance		93
Businesses	11	
Residences	82	
Signatures Opposing Issuance		65
Businesses	11	
Residences	54	
Total Contacts		158

3. **Desires Signatures:**

Signatures Favoring Issuance (Based on Desires)	93	=	58.86%
Signatures Opposing Issuance (Based on Desires)	<u>65</u>	=	<u>41.14%</u>
Total Base Figure	158	=	100.00%

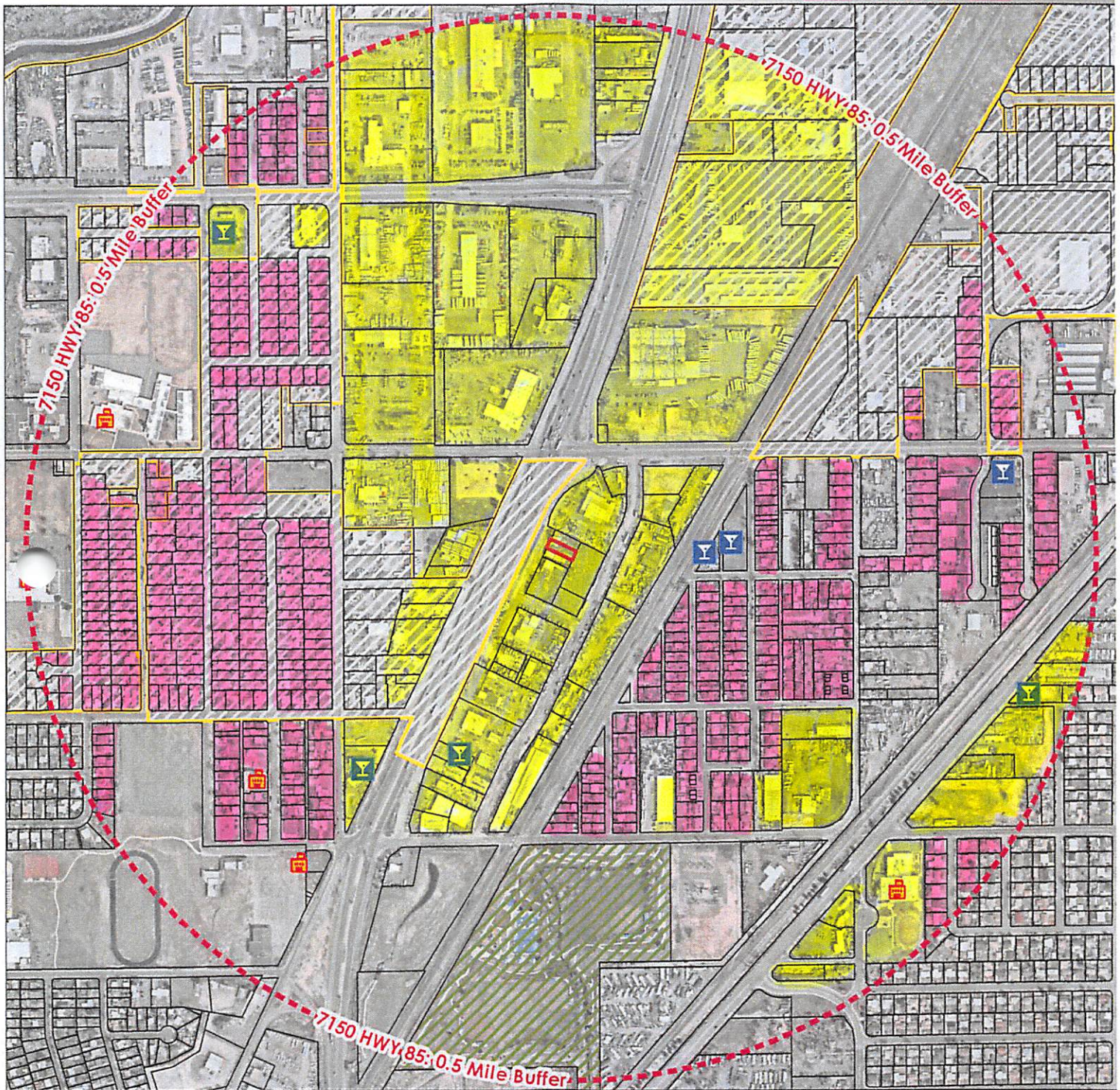
The petition packets are presented as follows: Cover map, petitions, and affidavit.

#1 & #2 / Joseph Smith / Businesses & Residences



7150 Highway 85 Marijuana Permit Map

○ - BUSINESSES
○ - RESIDENCES



Miles 0 0.125 0.25 0.5

- 7150 HWY 85
- Schools
- Marijuana License
- 0.5 Mile Buffer
- Parks & OS
- Liquor License
- City Limit
- Adams County

DISCLAIMER
This product was produced by the Commerce City GIS Division. The City of Commerce City has made every effort to produce data as accurately as possible. Maps are general representations and are produced for general representation only. Maps may contain information that is no longer current. Use of this information is the sole responsibility of the user and the City of Commerce City shall assume no liability for any errors, omissions, or inaccuracies in information provided regardless of cause and assumes no liability for any decisions made or actions taken or not taken in reliance upon this map or any information provided. Sale or reproduction of this product is prohibited without the express written consent of the City of Commerce City.

Date of Data: 8/20/2019
DRAPP Aerial: Spring 2018

GIS Maps and geospatial data are available for review at:
City of Commerce City, GIS Division
7887 E 60th Ave, Commerce City, CO 80022
303-289-3737 GIS@c3gov.com www.c3gov.com