

PETITION/OPINION POLL RESULTS

1. Total Doorknocks:

Not-at-Homes and/or Business Owners/Managers Not Available	81
Not Qualified to Sign	3
Preferred to Not Participate	18
Parties in Interest that Participated	124
Deleted Signatures	<u>2</u>
Total Base Figure	228

2. Qualified Contacts:

A. Signatures

Signatures Favoring Issuance	121
Businesses	18
Residences	103
 Signatures Opposing Issuance	 3
Businesses	0
Residences	3

Total Contacts	124
-----------------------	------------

B. Breakdown of Reasons of Signatures in Opposition:

No Need	2
Abhorrence of Alcohol	1
Religious Objections	0
Usage Objections	0
Miscellaneous Reasons	0
No Reason Given	<u>0</u>
Total Signatures	3

Breakdown of Signatures Favoring and Opposing:

Favoring Issuance (Based on Needs/Desires)	121	=	97.58%
Opposing Issuance (Based on Needs/Desires)	2	=	1.61%
Abhorrence of Alcohol	1	=	0.81%
Religious Objections	0	=	0.00%
Usage Objections (Commercial, Traffic, Parking, Crime)	0	=	0.00%
Other Miscellaneous Reasons	0	=	0.00%
No Reason Given	<u>0</u>	=	<u>0.00%</u>
Total Base Figure	124	=	100.00%

3. Needs and Desires Signatures:

Signatures Favoring Issuance (Based on Needs/Desires)	121	=	98.37%
Signatures Opposing Issuance (Based on Needs/Desires)	<u>2</u>	=	<u>1.63%</u>
Total Base Figure	123	=	100.00%

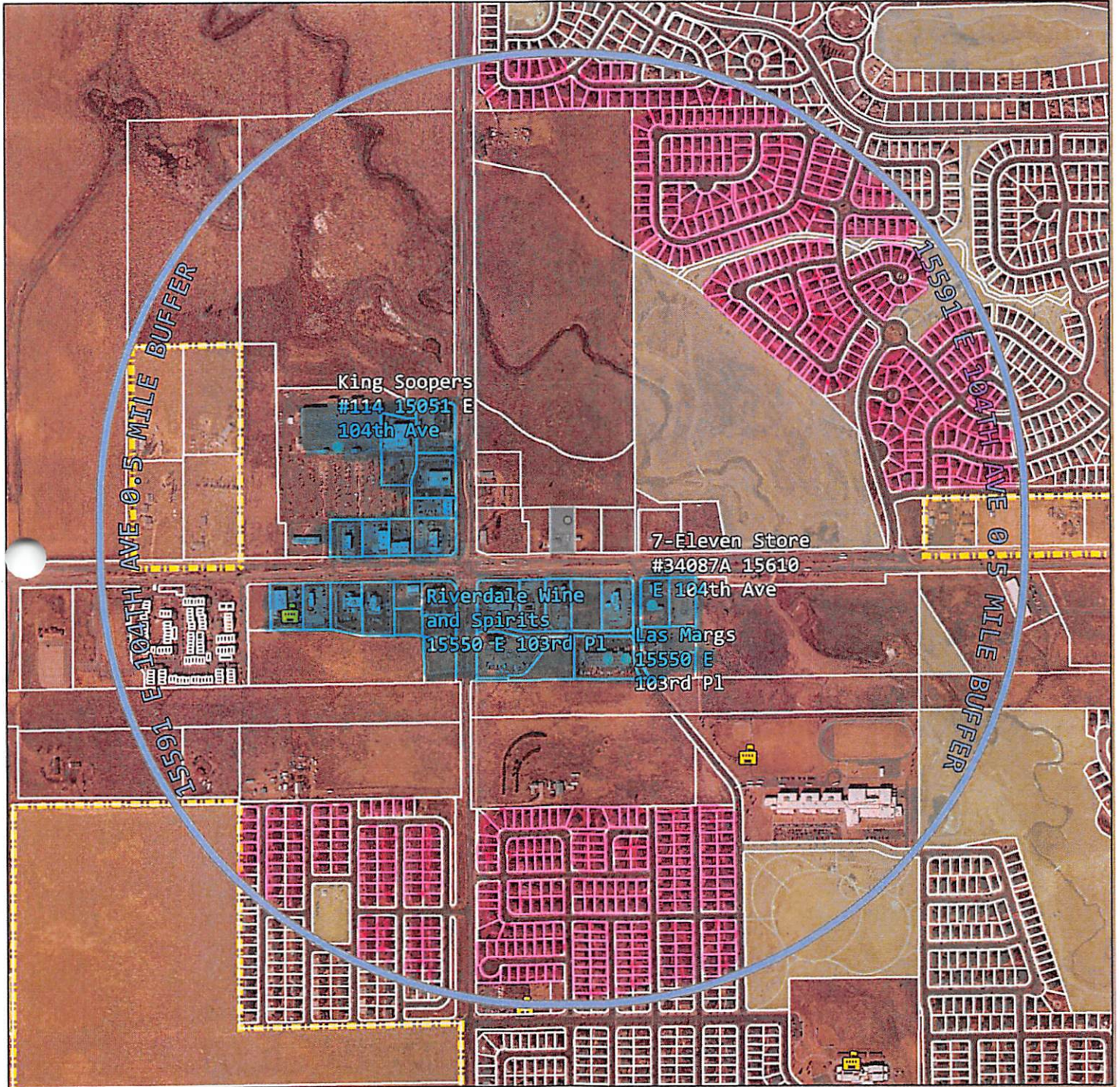
The petition packets are presented as follows: Cover map, petitions, and affidavit.

#1 & #2 / Maureen Young / Businesses & Residences



15591 E 104TH AVE

Liquor Permit Map



0 0.25 0.5 Miles

- 15591 E 104th Ave
- 15591 E 104TH AVE 0.5 Buffer
- Liquor Licenses
- School
- Parks
- City Limit
- Parcels

DISCLAIMER

This product was produced by the Commerce City GIS Division. The City of Commerce City has made every effort to produce data as accurately as possible. Maps are general representations and are produced for general representation only. Maps may contain information that is no longer current. Use of this information is the sole responsibility of the user and the City of Commerce City shall assume no liability for any errors, omissions, or inaccuracies in information provided regardless of cause and assumes no liability for any decisions made or actions taken or not taken in reliance upon this map or any information provided. Sale or reproduction of this product is prohibited without the express written consent of the City of Commerce City.

Date of Data: 6/25/2019

DRAPP Aerial: Spring 2018

GIS Maps and geospatial data are available for review at:
City of Commerce City, GIS Division
7887 E 80th Ave, Commerce City, CO 80022
303-286-3737 GIS@ccgov.com www.ccgov.com

Document Path: \\ccdata\GIS_Prod\ServiceCalls\2019\SR22040_LiquorMryana\15591E104THAVE_LiquorLicense.mxd

● - BUSINESSES

○ - RESIDENCES