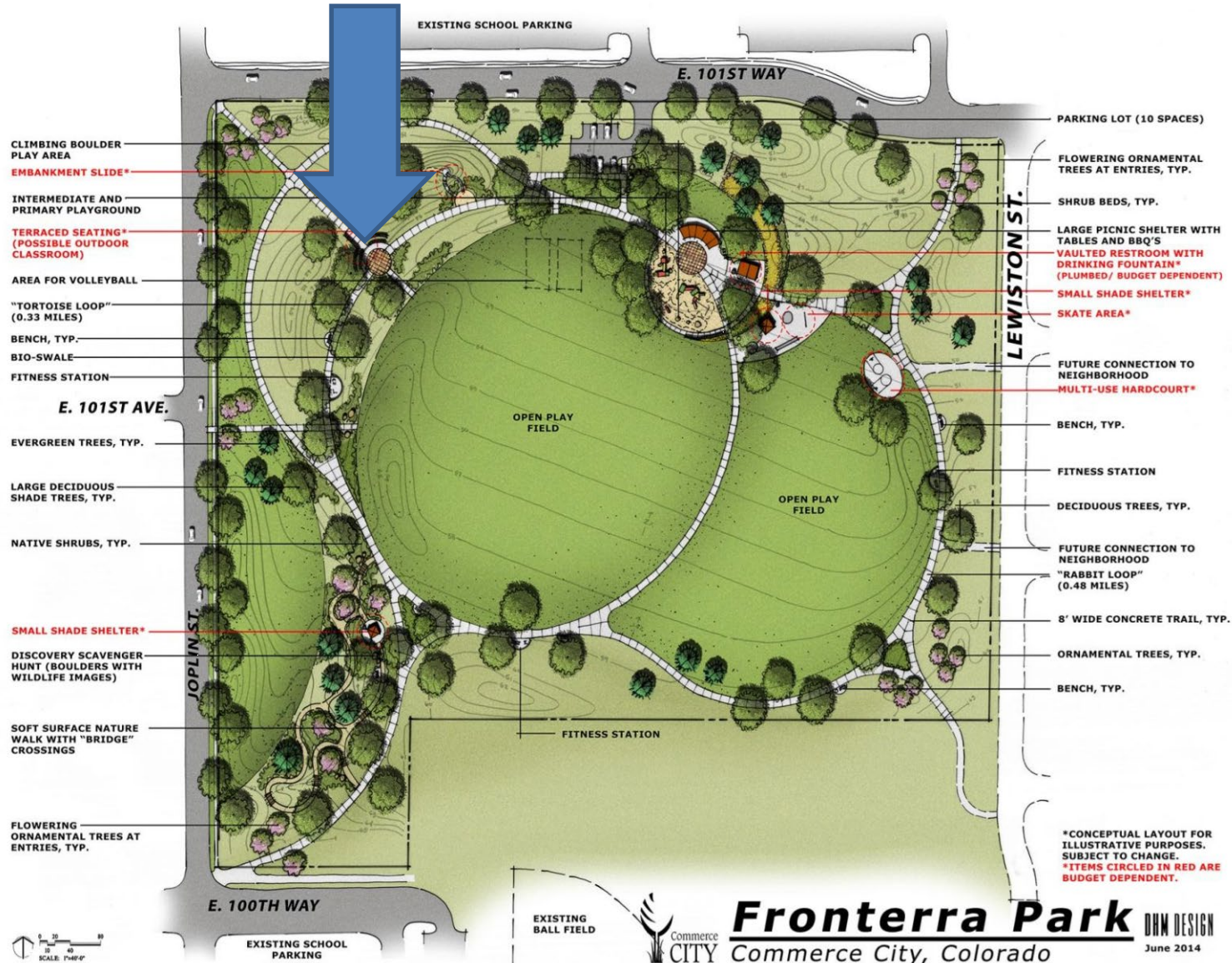




# Fronterra Park Public Art Supplemental Materials



# Artwork Placement



# Selection Summary

Four artists were selected as semi-finalists:

**Mike Buckley, Salida, CO** proposed three enormous boulders of native stone to be painted with “layers” in bright colors. The rocks would be smooth and climbable for kids. The artist was interested through a literal representation (strata/layers) that was also eye-catching and whimsical.

**Don Kennel, Santa Fe, NM** proposed a large (15’) tall sculpture of a puppy, made of Corten steel and aluminum. Under the puppy was a large swing to engage children and adults and create a community area where people would gather.

**Lisa Russell, Fort Collins, CO** proposed six large (9’) gabion structures (a metal cage filled with stone) with a falcon and bison in stainless steel welded to the sides. The falcon and bison are the mascots of the neighboring schools and the area was situated to finish the “outdoor classroom area.”

**Bill Bunting, Springfield, CO** proposed a sculpture based on a poem he wrote about the area. The handmade steel sculpture consists of five circles with images from of Commerce City’s/Fronterra Park’s history: an antelope, a longhorn steer, a plow, a train and children swinging.



# Recommended Artwork

Lisa Russell, Ft. Collins, CO



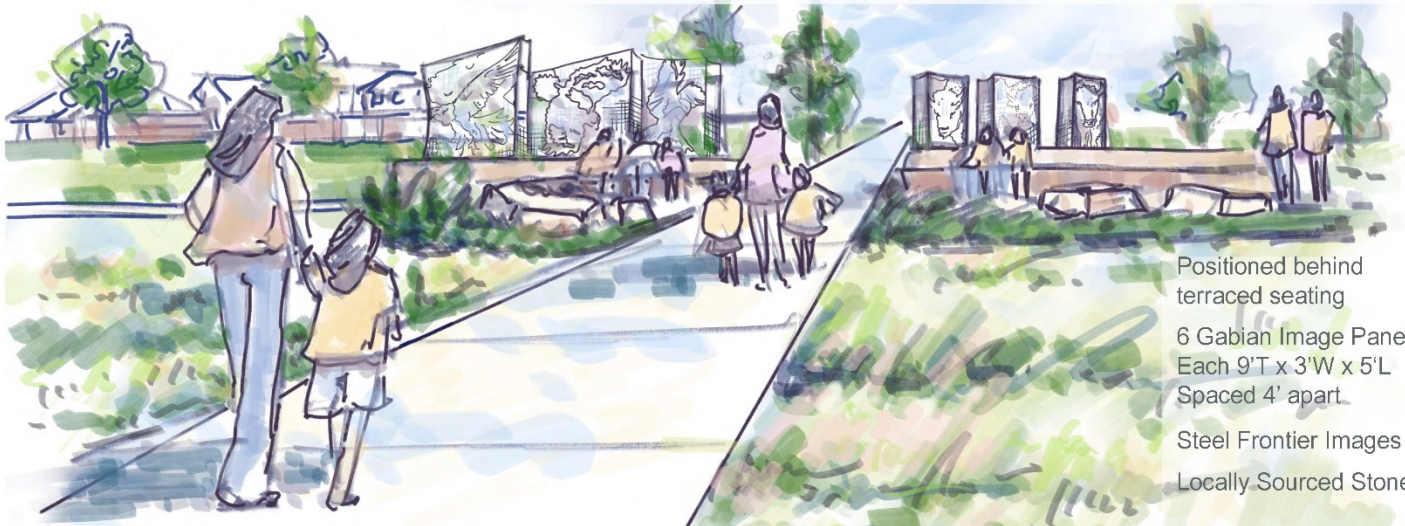
Lisa Cameron Russell  
825 Smith Street, Fort Collins, CO, 80524  
lisa@lisajcameron.com www.lisajcameron.com

FRONTERRA PARK

PUBLIC ART PROJECT PROPOSAL

"FRONTERRA SALON DE CLASES"

Creating an Intimate Educational Outdoor Classroom Setting Celebrating Nature on the Frontier



Positioned behind  
terraced seating  
6 Gabian Image Panels  
Each 9'T x 3'W x 5'L  
Spaced 4' apart  
Steel Frontier Images  
Locally Sourced Stone



A gabion is a wirework container filled with rock, broken concrete, or other material, typically used in the construction of dams, retaining walls, etc.

What images would you use to depict nature in the frontier?  
Buffalo  
Raptors  
Blanket Flower

Lisa J Cameron  
Artworks LLC

# Semi-finalist (Not Selected)

Mike Buckley, Salida, CO





# Semi-finalist (Not Selected)

## Don Kennel, Santa Fe, NM

Don Kennel Previous Work:



"Barn Dog" 2017. Steel, 15' x 21' x 8'



"Yard Dog" 2011. Steel, 12' x 20' x 6'



"Yard Dog" in action.

### "Bestie"

proposal for Fronterra Park

Hand-forged aluminum and corten steel are used to create a monumental every-day mixed breed spotted dog.

A custom porch swing invites the viewer into the artwork creating an interactive space and opportunities for narrative play.



Beautiful, durable and touchable. A celebration of loyalty, friendship and play. 15 feet tall, 24 wide, 8 feet deep.

# Semi-finalist (Not Selected)

## Bill Bunting, Springfield, CO

### Fronterra Park

From a cattle ranch and trading post  
A town was given birth  
Then farmers plowed the native sod  
And tilled the fertile earth

Wheat was sown, wheat was reaped  
Wheat was soon the king  
Then industry took the reins  
With the progress it would bring

Built on this foundation  
Neighborhoods now stand  
Homes now dot, the very spot  
Where farmers plowed the land

And community brings new life  
Witnessed in children hard at play  
Our hope for the future  
And our joy for today

© 2019 Bill Bunting

This original poem will be featured at the base of the finished sculpture.

My inspiration for this sculpture Comes from studying the history of The Commerce City area. Each sculpture designates a specific era in Commerce City's history with each circle progressing upward to the finale-the present-Fronterra Park; built upon the foundation of past eras.

### Fronterra Park Sculpture Project

Front

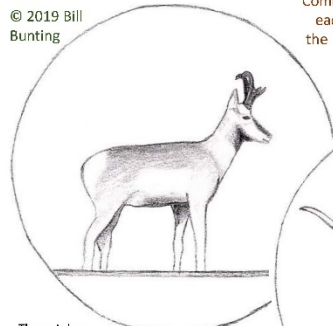
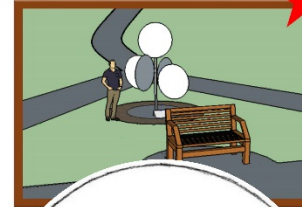
Back

Being born and raised on an isolated ranch on the high plains of Colorado it seems only natural that my inspiration comes from the solitude of the prairie. Although my artwork covers many genres my first love will always be the cowboy life and the prairie. Having also the gift of poetry many of my sculptures grow and flow from words put to rhythm, and verse. Each three dimensional sculpture is sculpted by welding together small pieces of steel as shown in the pictures below.

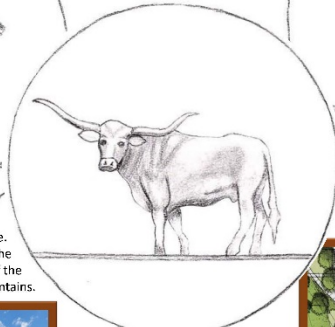
The history of the area's agriculture is represented by the horse drawn sod plow.



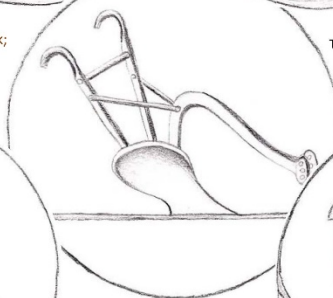
Bill "Three Feathers" Bunting



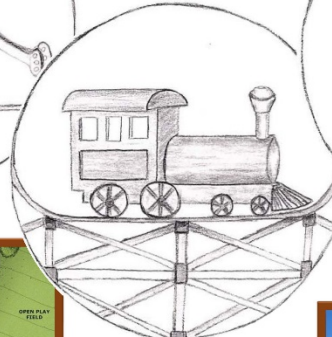
The antelope represents the seemingly endless pristine prairie. This is where it began. Commerce City, on the vast untouched grasslands at the foothills of the Rocky Mountains.



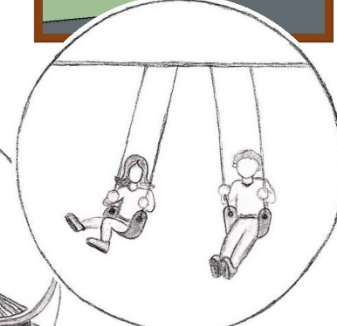
The longhorn steer signifies the next step in the city's history. The cattle ranches and trading post of the 1850s.



Stewart Middle School



The steam locomotive symbolizes the industry that began in the 1930s.



Fronterra Park today. The children swinging together signifies community. A sense of neighborhood. Homes and families and friends. Life shared in a community. Children, our hope for tomorrow. Children, the history they make yet unknown. Children, our joy for today.

Spirit of the Plains is a 9 foot tall buffalo that was commissioned by the town of Hudson, CO in 2017



Second Creek Elementary School



Circle of Life is comprised of circles similar in size and structure to those envisioned for the Fronterra Park sculpture



# Information Presented to City Council on July 22

---





# Fronterra Park Public Art Recommendation

July 22, 2019  
Kendall Peterson, Art Consultant

# Selection Process

---

- Established Art Selection Committee
  - Residents, local businesses, cultural council representatives, art teachers
- Three Committee Meetings: March 4 – June 25, 2019
  - Set artist selection criteria
  - Reviewed and juried applications, selected four semifinalists
  - Four artists presented proposals; one artist selected
    - Semi finalists also submitted posters explaining their designs for the two schools adjacent to the park. Students learned about the project and stated their favorites.
  - Cultural Council reviewed and approved recommendation  
July 9, 2019



# Selection Summary

Four artists were selected as semi-finalists:

**Mike Buckley, Salida, CO** proposed three enormous boulders of native stone to be painted with “layers” in bright colors. The rocks would be smooth and climbable for kids. The artist was interested through a literal representation (strata/layers) that was also eye-catching and whimsical.

**Don Kennel, Santa Fe, NM** proposed a large (15’) tall sculpture of a puppy, made of Corten steel and aluminum. Under the puppy was a large swing to engage children and adults and create a community area where people would gather.

**Lisa Russell, Fort Collins, CO** proposed six large (9’) gabion structures (a metal cage filled with stone) with a falcon and bison in stainless steel welded to the sides. The falcon and bison are the mascots of the neighboring schools and the area was situated to finish the “outdoor classroom area.”

**Bill Bunting, Springfield, CO** proposed a sculpture based on a poem he wrote about the area. The handmade steel sculpture consists of five circles with images from of Commerce City’s/Fronterra Park’s history: an antelope, a longhorn steer, a plow, a train and children swinging.



# Recommendation

The Commerce City Cultural Council recommends the following public art installation, consistent with the master plan: **Lisa Russell, Ft. Collins, CO** shall receive a commission from the City for \$50,000 for the design, construction and installation of her proposed artwork





# Questions?

A decorative horizontal dotted line in a dark teal color spans across the lower portion of the slide. Two solid dark teal dots are placed on the line: one is positioned near the end of the line on the right, and the other is positioned further to the left, below the word "Questions?".