

0 500 1,000 2,000 Feet

Subject Property

Zoning District

AG - Agricultural District

C-1 - Local Commercial District

C-2 - General Commercial District

C-3 - Regional Commercial District

I-1 - Light Intensity Industrial District

I-2 - Medium Intensity Industrial District

MHP - Mobile Home Park District

PUBLIC - Public District

PUD - Planned Unit Development District

R-1 - Single-Family Detached Residential District

R-2 - Single-Family Attached Residential District

R-3 - Multi-Family Residential District

ADCO - Unincorporated Adams County

City Limit Boundary

IGA Annexation Growth Boundary

PIN: 172128300133, 172128300134

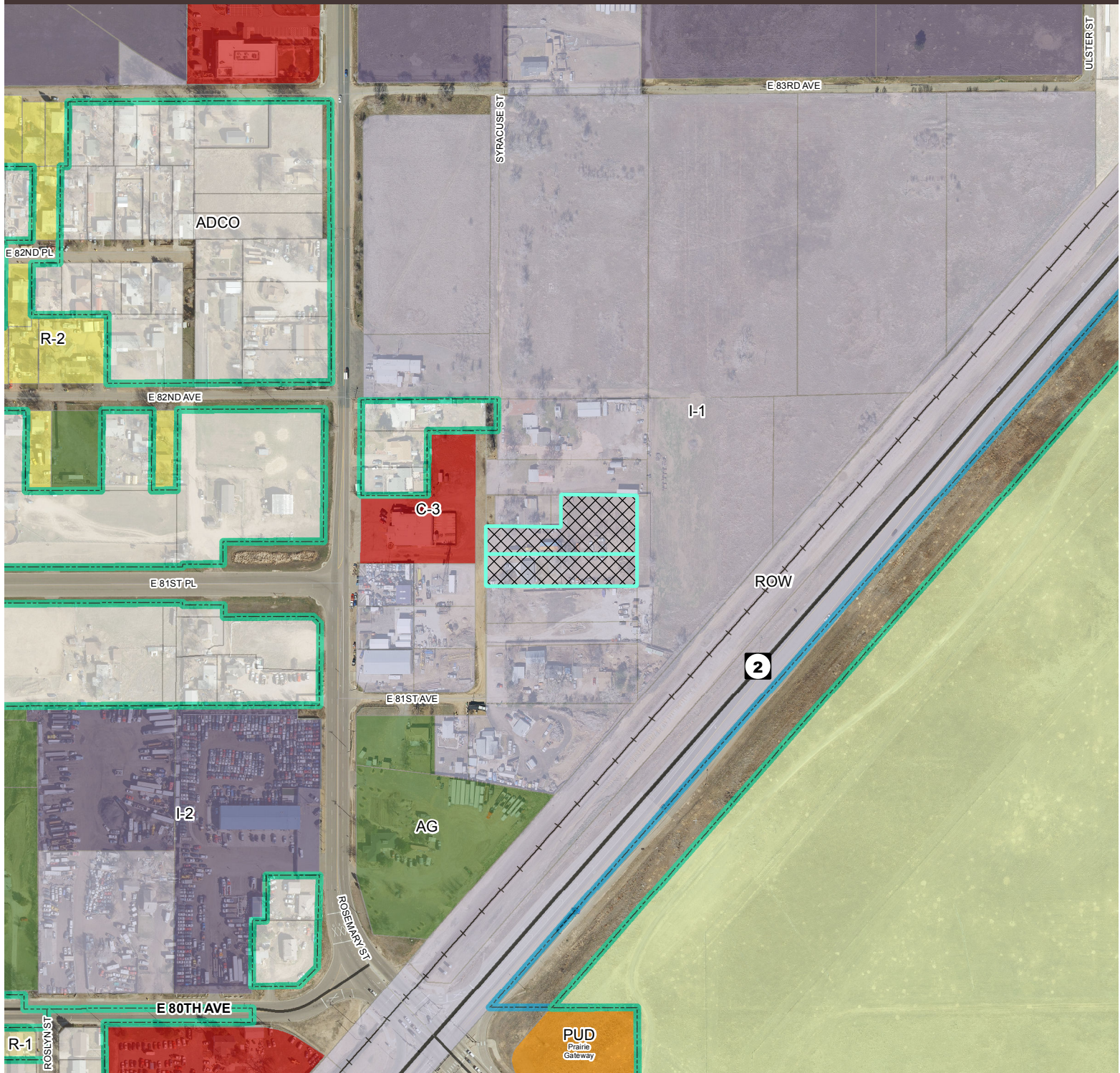
Commerce City Planning Division

Prepared By: CD_WASINGER

Date Saved: 5/30/2018

Document Path: O:\PC_Planning Commission\Zoning

Cases\Z-418-87-95-18 8150 Syracuse St (CL)\Z-418 V-



0 370 740 Feet

Subject Property

Zoning District

AG - Agricultural District

C-3 - Regional Commercial District

I-1 - Light Intensity Industrial District

I-2 - Medium Intensity Industrial District

PUD - Planned Unit Development District

R-1 - Single-Family Detached Residential District

R-2 - Single-Family Attached Residential District

ADCO - Unincorporated Adams County

City Limit Boundary

IGA Annexation Growth Boundary

PIN: 172128300133, 172128300134

Commerce City Planning Division

Prepared By: CD_WASINGER

Date Saved: 5/30/2018

Document Path: O:\PC_Planning Commission\Zoning Cases\Z-418-87-95-18 8150 Syracuse St (CL)\Z-418 V-