

**RESOLUTION REGARDING THE DISSOLUTION OF HIGH PLAINS WATER AND  
SANITATION METROPOLITAN DISTRICT**

WHEREAS, High Plains Water and Sanitation Metropolitan District ("District") is a quasi-municipal corporation and political subdivision of the State of Colorado; and

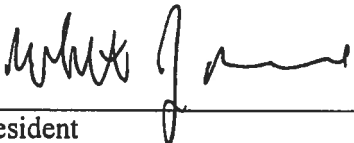
WHEREAS, pursuant to § 32-1-701(1), C.R.S., a majority of all members of the Board of Directors of the District has deemed it to be in the best interest of the District that it be dissolved, and that a Petition for Dissolution be filed with the District Court of Adams County, Colorado.

NOW, THEREFORE, BE IT RESOLVED BY THE BOARD OF DIRECTORS OF HIGH PLAINS WATER AND SANITATION METROPOLITAN DISTRICT:

The Board of Directors of High Plains Water and Sanitation Metropolitan District authorizes its attorneys, Seter & Vander Wall, P.C., to initiate the process of dissolving the District by filing a Petition for Dissolution with the District Court of Adams County, Colorado, pursuant to § 32-1-701(1), *et seq.*, C.R.S.

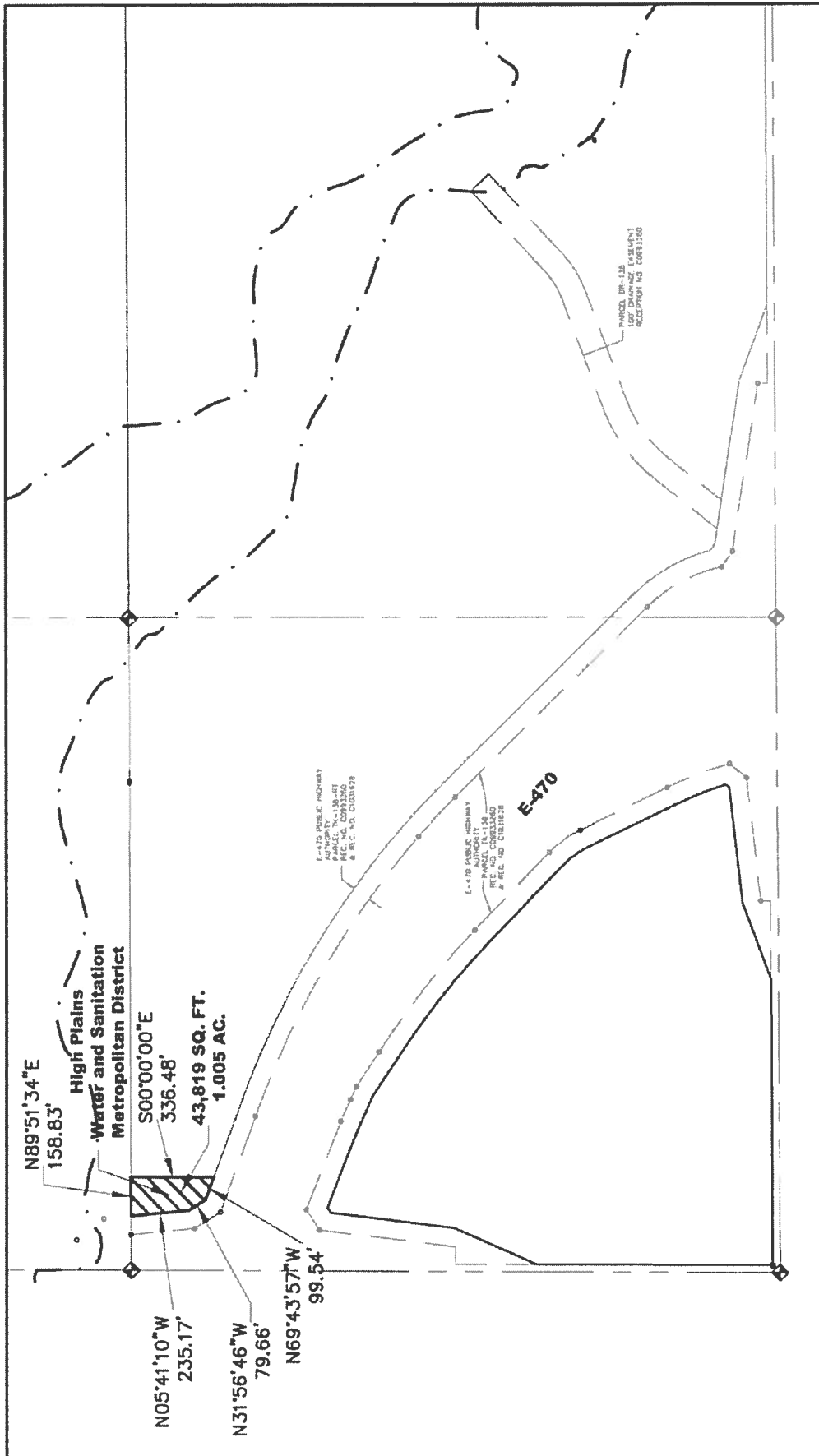
RESOLVED this 14th day of February, 2018.

**HIGH PLAINS WATER AND  
SANITATION METROPOLITAN  
DISTRICT**

By: \_\_\_\_\_  
President

Attest:

By: \_\_\_\_\_  
Secretary



A PARCEL OF LAND LOCATED IN THE SOUTH ONE-HALF OF SECTION 3, TOWNSHIP 2 SOUTH, RANGE 66 WEST OF THE 6TH PRINCIPAL MERIDIAN, COUNTY OF ADAMS, STATE OF COLORADO.



Calibre Engineering, Inc.  
8201 Southpark Lane, Suite 200  
Littleton, CO 80120 (303) 730-0434  
Municipal Engineering Development Master Planning

# High Plains Water and Sanitation Metropolitan District BOUNDARY MAP



**NORTH**

NOVEMBER 19, 2007



1 inch = 600 ft. Horizontal

## EXHIBIT A

### LEGAL DESCRIPTION

A PARCEL OF LAND SITUATED IN THE SOUTH ONE-HALF OF SECTION 3, TOWNSHIP 2 SOUTH, RANGE 66 WEST OF THE 6<sup>TH</sup> PRINCIPAL MERIDIAN, COUNTY OF ADAMS, STATE OF COLORADO, MORE PARTICULARLY DESCRIBED AS FOLLOWS:

COMMENCING AT THE WEST QUARTER OF SAID SECTION 3; THENCE N89°51'34"E, ALONG NORTH LINE OF THE SOUTH HALF OF SAID SECTION 3, A DISTANCE OF 229.87 FEET TO THE POINT OF BEGINNING;

THENCE CONTINUING N89°51'34"W ALONG SAID NORTH LINE, A DISTANCE OF 158.83 FEET TO A POINT; THENCE S00°00'00"E, A DISTANCE OF 336.48 FEET TO A POINT ON THE NORTHERLY LINE OF E-470 PUBLIC HIGHWAY AUTHORITY PARCEL TK-138-RT, AS RECORDED IN ADAMS COUNTY, COLORADO AT RECEPTION NO. C0993260 AND RECEPTION NO. C1031628;

THENCE RUNNING ALONG SAID NORTHERLY LINE, THE FOLLOWING TEN (3) COURSES:

1. N69°43'57"W, A DISTANCE OF 99.54 FEET TO A POINT;
2. N31°56'46"W, A DISTANCE OF 79.66 FEET TO A POINT;
3. N05°41'10"W, A DISTANCE OF 235.17 FEET TO A POINT OF BEGINNING.

THE ABOVE DESCRIBED PARCEL OF LAND CONTAINS 43,819 SQUARE FEET OR 1.005 ACRES OF LAND, MORE OR LESS.