

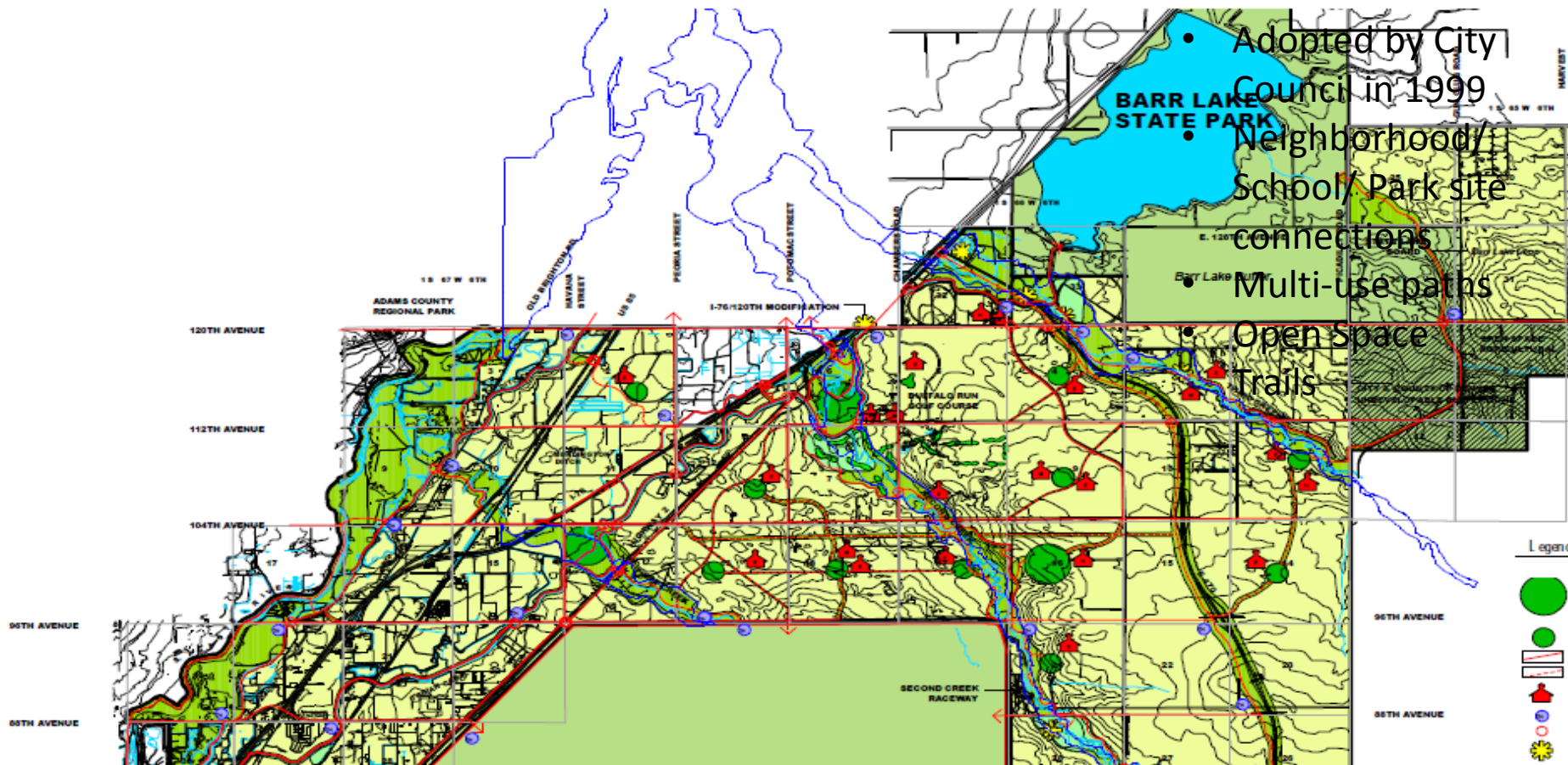


Trails Update

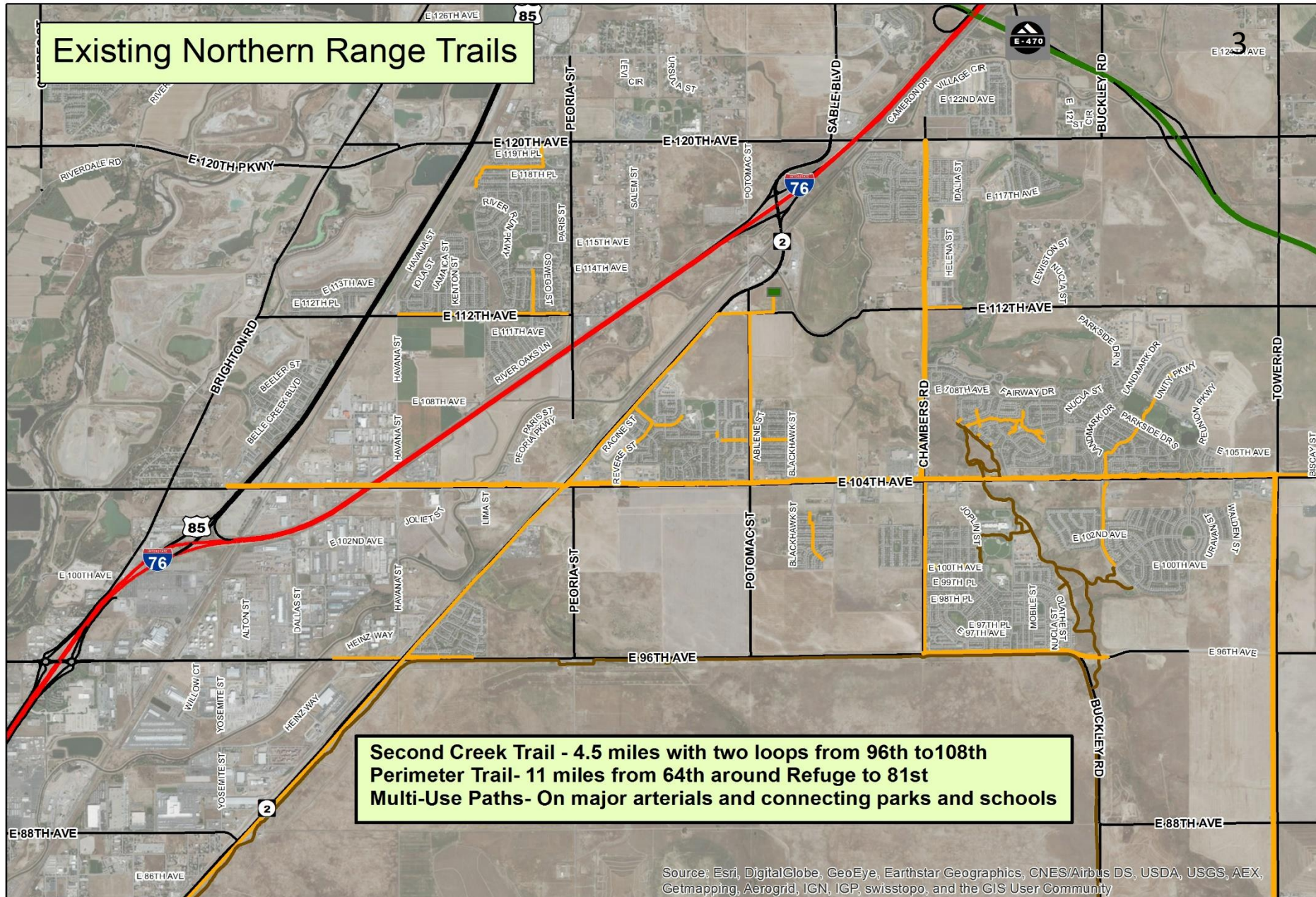
City Council
May 21, 2018

Northern Range Trail Connections

- The Prairieways Action Plan includes trails throughout the Northern Range



Existing Northern Range Trails



0 0.5 1 2 Miles

— Multi-Use Path — Existing Trail

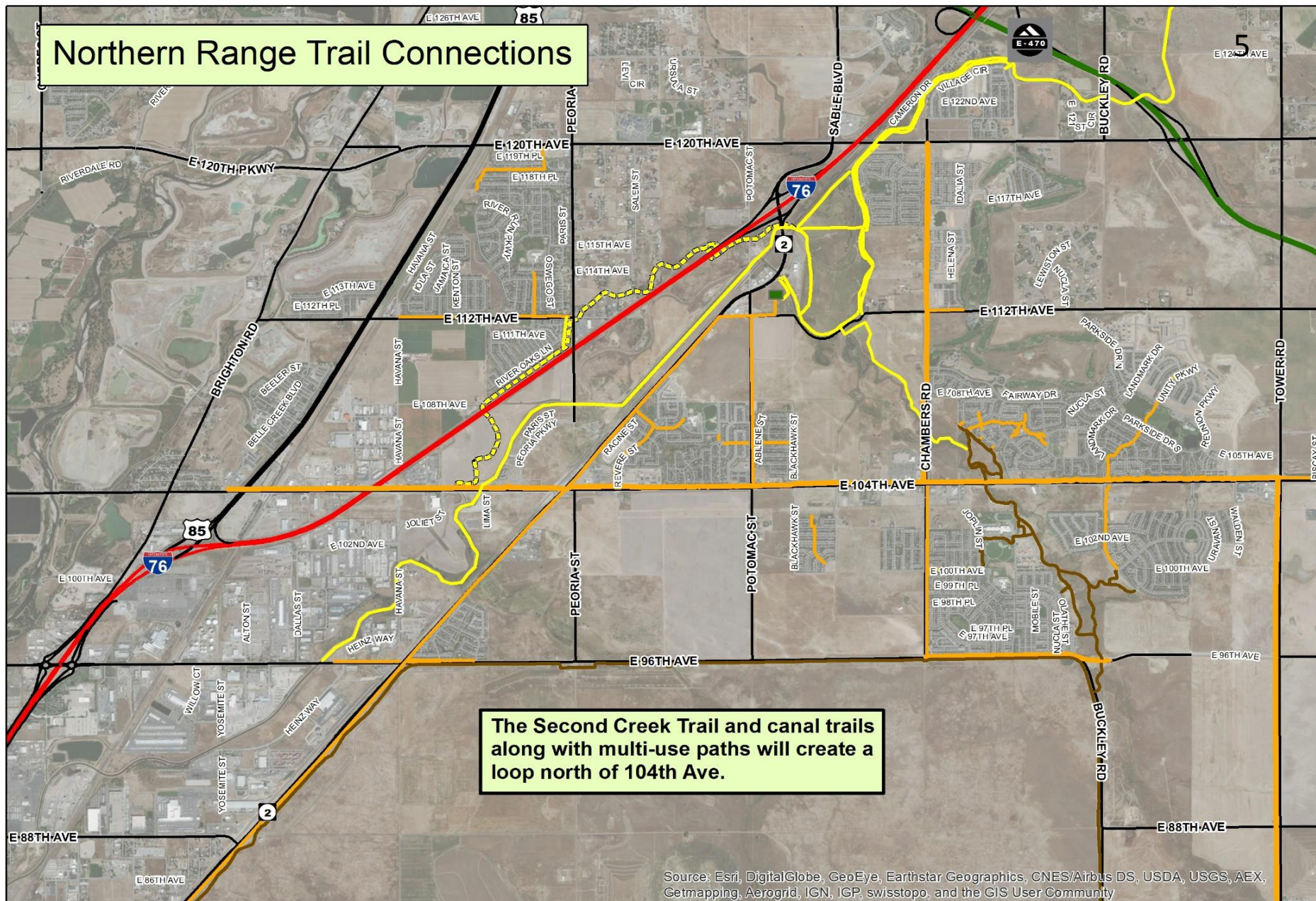


Next Phase of Trail Planning & Development

- Bison Ridge, the new recreation center, is located at 112th and Potomac.
- A loop trail will be created with 104th Ave. multi-use path, the canal trails, and the Second Creek Trail
- The goal is to connect as many residents as possible to Bison Ridge Recreation Center and the loop trail
- Some routes may not be direct due to numerous barriers such as highways, railroads, and canals



Northern Range Trail Connections



Source: Esri, DigitalGlobe, GeoEye, Earthstar Geographics, CNES/Airbus DS, USDA, USGS, AEX, Getmapping, Aerogrid, IGN, IGP, swisstopo, and the GIS User Community

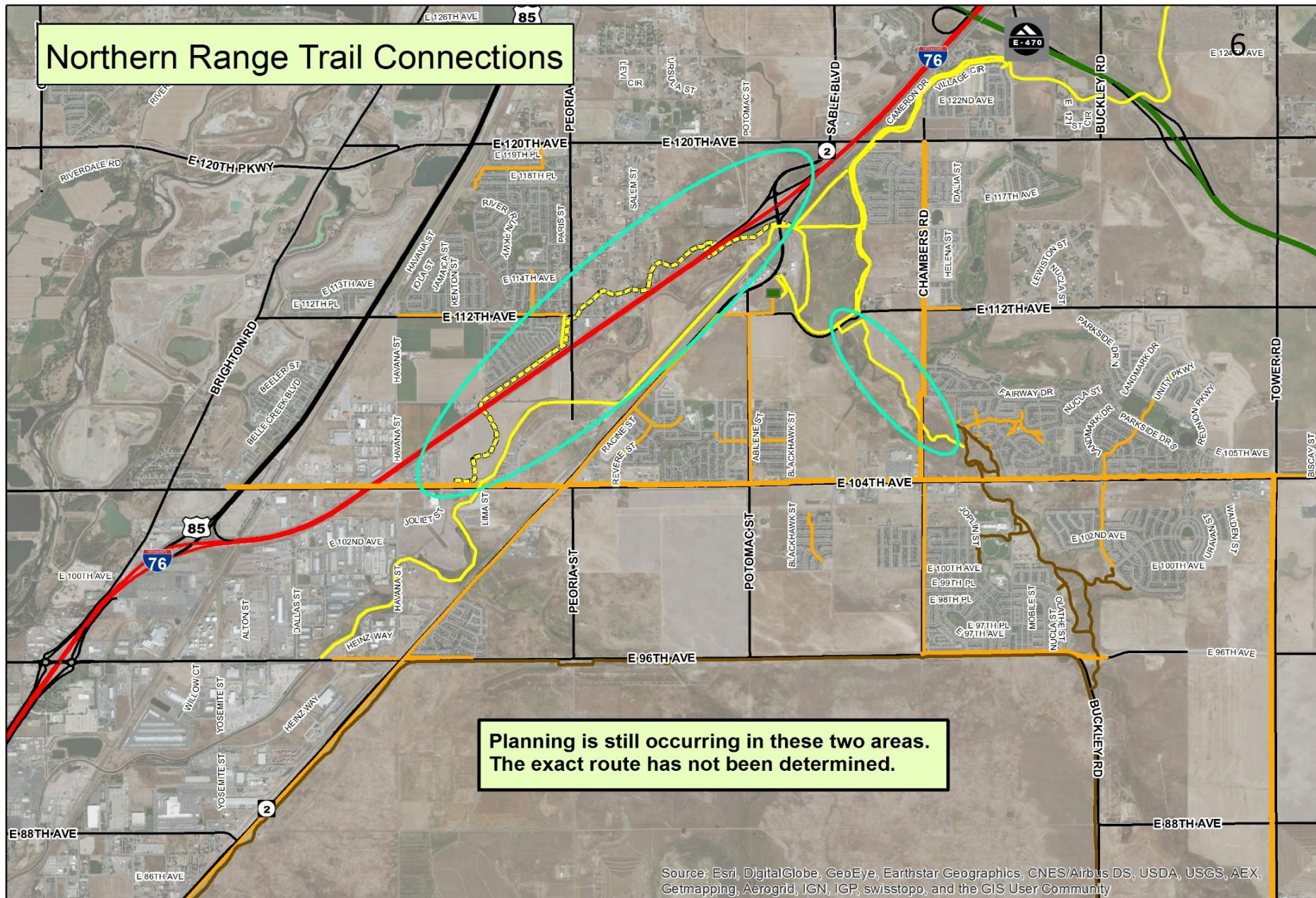
0 0.5 1 2 Miles

Multi-Use Path Existing Trail Future Trail



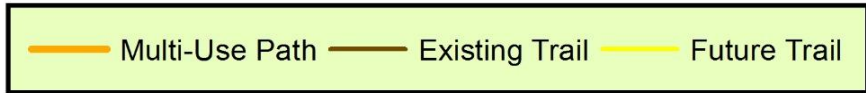
May 8, 2018
Traci N. Ferguson

Northern Range Trail Connections

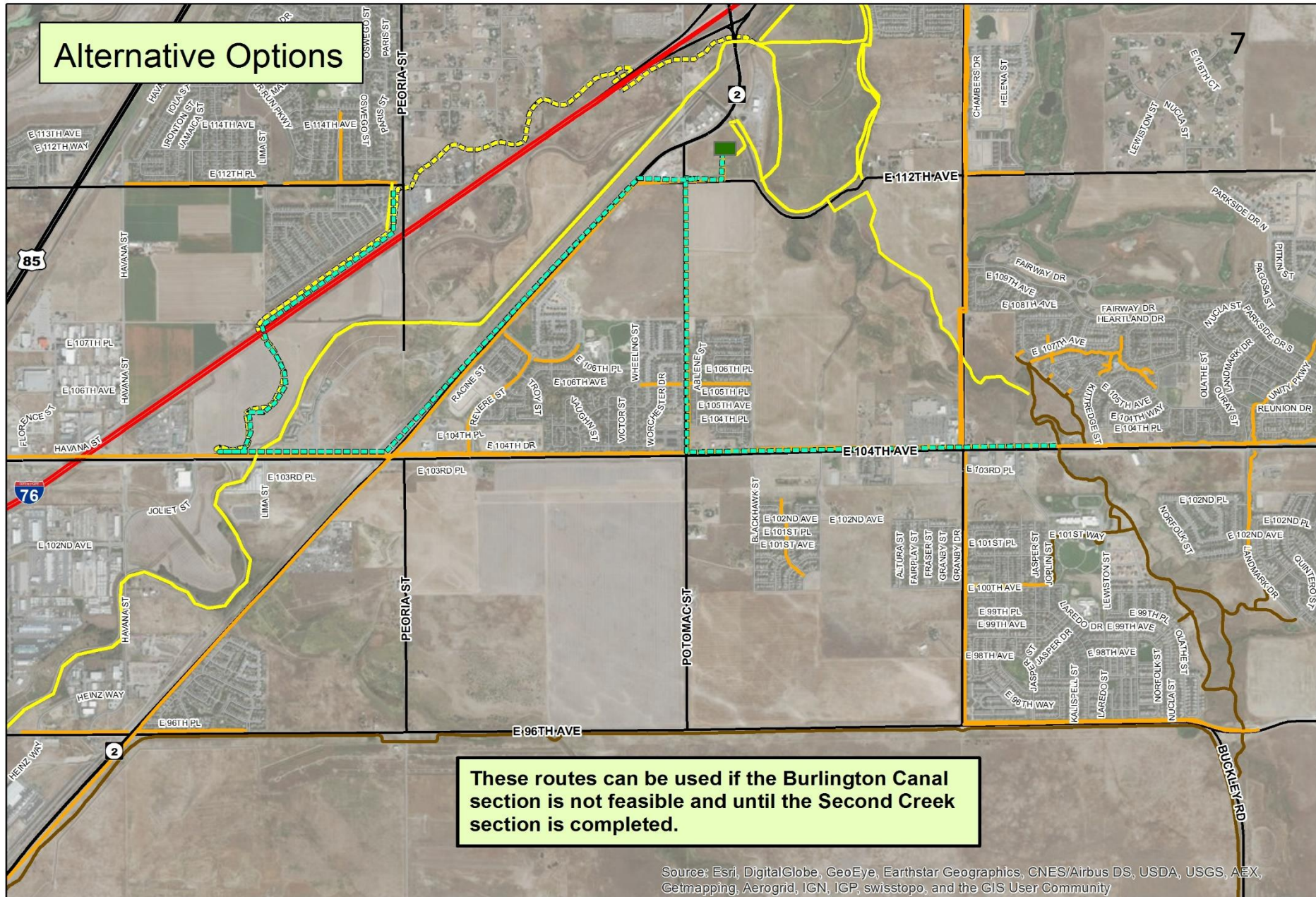


Source: Esri, DigitalGlobe, GeoEye, Earthstar Geographics, CNES/Airbus DS, USDA, USGS, AEX, Getmapping, Aerogrid, IGN, IGP, swisstopo, and the GIS User Community

0 0.5 1 2 Miles



Alternative Options



0 0.25 0.5 1 Miles

----- Alt Route ——— Multi-Use Path ——— Existing Trail ——— Future Trail



Northern Range Trails

- Timelines
 - Completion of planning & design of the O'Brian Canal trail segments is anticipated to occur in fall 2018.
 - Remaining segments depend on 112th Ave. construction and Second Creek drainage improvements and ownership transfer
 - Tower Rd. and associated multi-use path and bike lanes are complete.
 - Highway 2 and associated multi-use path and bike lanes are complete.
 - 104 Ave. multi-use path is complete from Highway 85 to Tower Rd.



Northern Range Trails

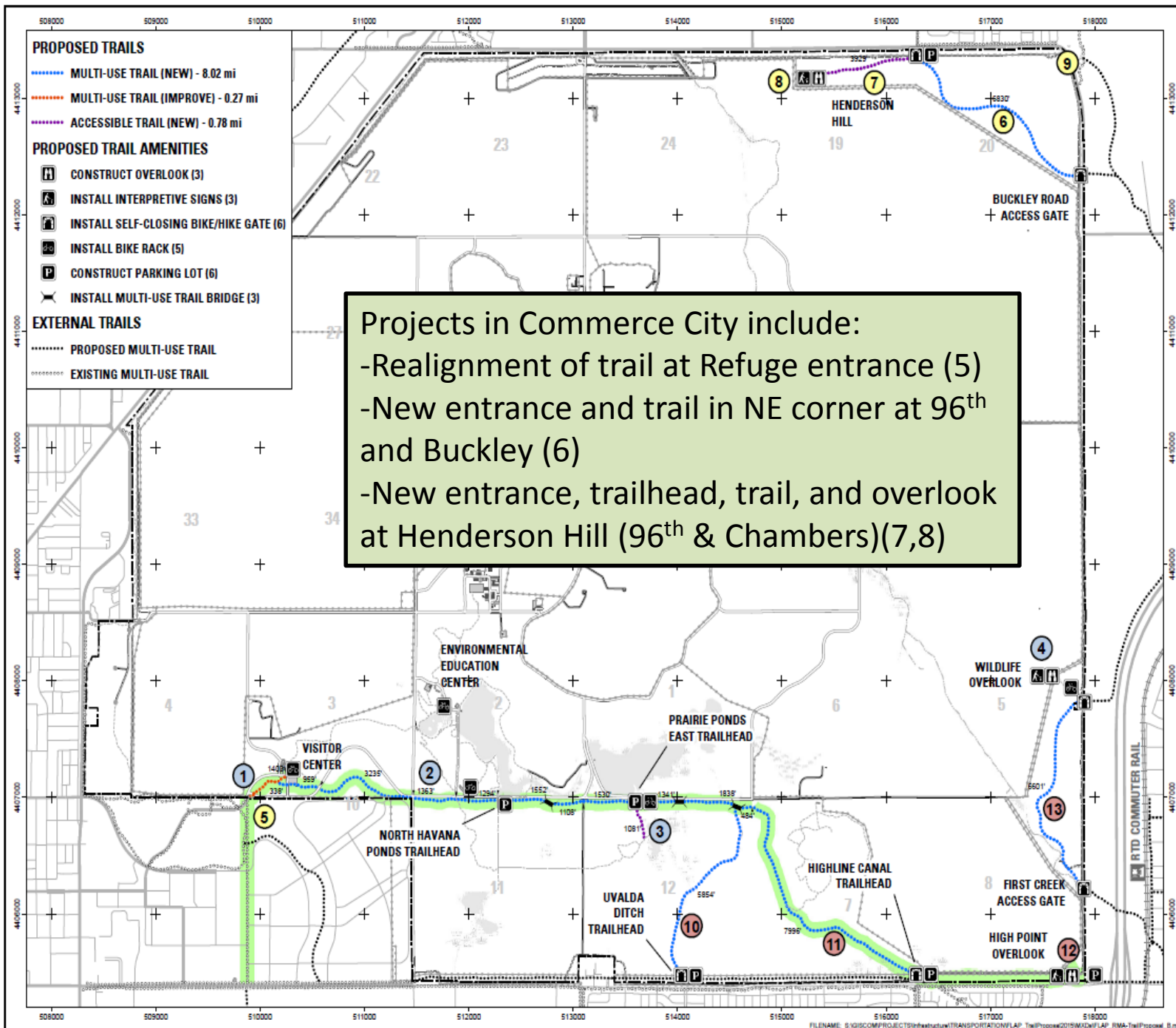
- FLAP- Federal Lands Access Program
 - Goal is to increase access to federal lands
- Commerce City working with U.S. Fish and Wildlife Service at the RMANWR, Denver, and Adams County.
- Construction likely to occur in 2019






Northern Range Trails

- FLAP projects in Commerce City include:
 - Modify existing trail leading to the Refuge to accommodate the new grand archway entrance
 - Two new entrances to the Refuge at the northeast corner: 96th and Chambers and just south of 96th and Buckley
 - Trail connections from new entrances to a new overlook at Henderson Hill





REFERENCE DRAWINGS			
DRAWING NO.	TITLE		
11			
NOTES			
1. CONSTRUCT NEW GRAND ARCHWAY ENTRANCE EQUIPPED WITH 4' SLIDING SECURITY GATE			
2. NEW TRAIL FROM VISITOR CENTER TO POTOMAC STREET (2.8 MILES)			
3. CONSTRUCT NEW FULLY ACCESSIBLE TRAIL AUTO TOUR ROUTE TO ROAD & GUN CLUB W (0.1 MILES)			
4. CONVERT EXISTING STRUCTURES TO NEW VIEWING STATION AND INTERPRETIVE STRUCTURES			
5. MODIFY EXISTING GATEWAY TRAIL AT RIMMEL ENTRANCE			
6. NEW TRAIL FROM BUCKLEY ROAD TO HENDERSON HILL GATE (1.3 MILES)			
7. CONSTRUCT NEW FULLY ACCESSIBLE TRAIL 96TH AVE/CHAMBERS ST. TO NEW HENDERSON OVERLOOK (0.5 MILES)			
8. NEW HENDERSON HILL OVERLOOK			
9. REPLACE CHAINLINK FENCE WITH SPLIT RAIL FENCE			
10. CONVERT EXISTING NATIVE ROAD TO NEW DITCH TRAIL (1.2 MILES)			
11. CONVERT EXISTING NATIVE ROAD TO NEW CANAL TRAIL (1.5 MILES)			
12. CONSTRUCT NEW HIGH POINT OVERLOOK AND INTERPRETIVE STRUCTURES. REPLACE CHAINLINK FENCE WITH SPLIT RAIL			
13. NEW TRAIL FROM FIRST CREEK TO NEW VIEWING STATION (1.3 MILES)			
<div><div></div><div>TRANSVERSE MERCATOR PROJECTION UTM ZONE 13N NORTH AMERICAN DATUM 1983</div></div>			
C	3/24/16	MM	FINAL PROPOSAL
B	10/23/16	MM	FIRST REVISION
A	5/14/14	MM	INITIAL CONCEPT
REV	DATE	BY	DESCRIPTION
ROCKY MOUNTAIN ARSENAL NATIONAL WILDLIFE REFUGE Commerce City, Colorado			
2016 Colorado FLAP Proposal			
<div><div></div><div></div></div>			
SCALE: 1"=3000'		DATE: 3/23/16	
DRAWN: M. Kallowski		DESIGNED: Kallowski	
CHECKED: N. Kallowski		DATE: 3/23/16	
SOFTWARE: ArcGIS 10.3.1		SHEET 1	

Funding

- CIP account for Northern Range Trail Connections created in 2015
- Second Creek pedestrian bridge connecting Buckley Ranch to Second Creek Elementary/ Stuart Middle School completed in 2018 funded through this account
- Approximately \$2 million remains in the account to fund all aforementioned projects



Regional Connectivity

- Aerial map demonstration



Questions?

