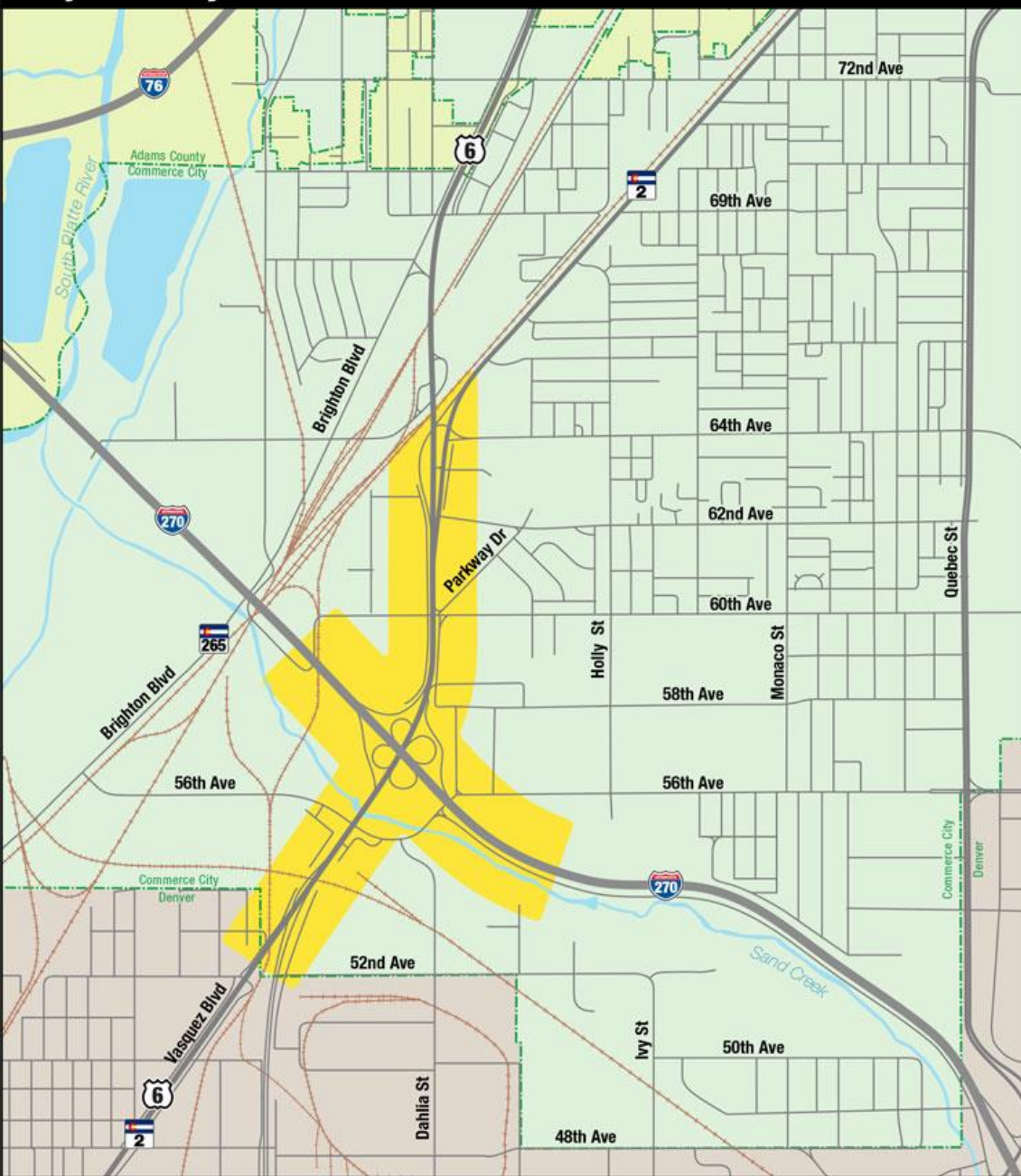




I-270-Vasquez Blvd. Planning and Environmental Linkage Study – Early Action Improvement Projects

March 12, 2018

Project Study Area



Project limits
Municipal boundaries

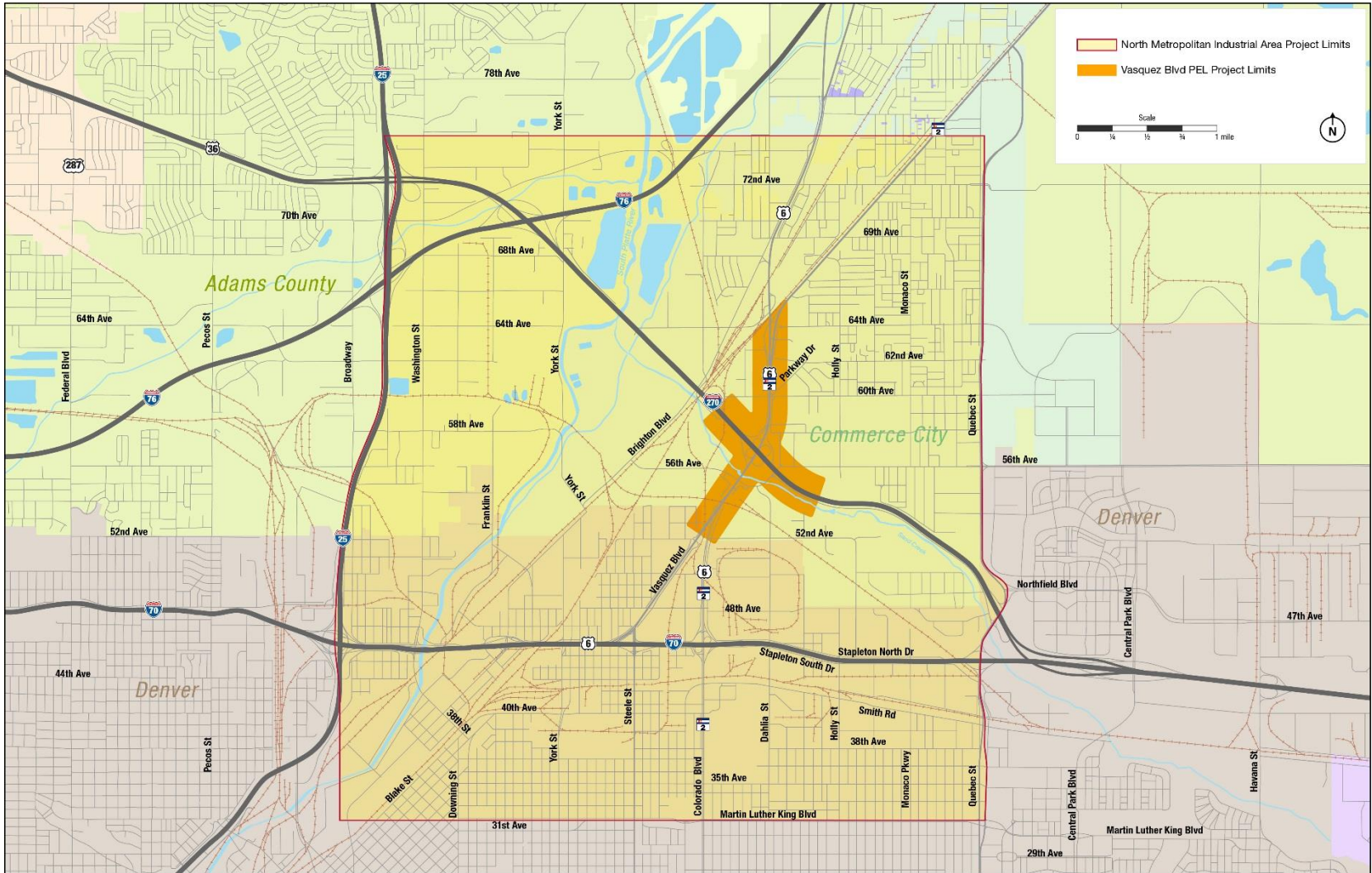
Scale
0 500 1,000 2,000 Feet



I-270/ Vasquez Blvd. Project Study Area



NMIACS Study Area



Project Purpose and Need

The purpose of the project is to improve operations, mobility, and safety for vehicles and freight at the I-270/Vasquez Blvd. interchange – and its connection to the Vasquez Blvd/56th Ave. and Vasquez Blvd//60th Ave. intersections and the surrounding local road system-and improve transportation connectivity for all modes.



Project Purpose and Need

The study is evaluating potential changes in the following locations:

- I-270 ramps at Vasquez Boulevard
- The intersection of Vasquez Boulevard, 60th Avenue and Parkway Drive
- The intersections of Vasquez Boulevard and 56th, 58th and 62nd Avenues

It is also looking at ways to accommodate pedestrians, bikes and transit along Vasquez Boulevard.



Safety Analysis – Vasquez Blvd. MP 292.44 to MP 294

| Year | Crashes | | | | Persons | |
|-----------------|------------|-----------|----------|------------|------------|----------|
| | PDO | Injury | Fatal | Total | Injured | Killed |
| 7/2010 – 6/2011 | 78 | 19 | 0 | 97 | 25 | 0 |
| 7/2011 – 6/2012 | 88 | 26 | 0 | 114 | 32 | 0 |
| 7/2012 – 6/2013 | 82 | 17 | 0 | 99 | 21 | 0 |
| 7/2013 – 6/2014 | 91 | 18 | 2 | 111 | 22 | 2 |
| 7/2014 – 6/2015 | 126 | 18 | 1 | 145 | 26 | 1 |
| Total | 465 | 98 | 3 | 566 | 126 | 3 |
| Average | 93.0 | 19.6 | 0.6 | 113.2 | 25.2 | 0.6 |

Safety Analysis – Intersection Crashes

| Intersection | Crashes | | | |
|-----------------------|------------|-----------|----------|------------|
| | PDO | Injury | Fatal | Total |
| 56 th Ave. | 121 | 25 | 1 | 147 |
| 60 th Ave. | 121 | 29 | 1 | 151 |
| Total | 242 | 54 | 2 | 298 |
| Average | 48.4 | 27.0 | 0.4 | 59.6 |



Traffic Analysis

| | Existing Conditions (min.) | | 2040 No Action (min.) | | Percent Difference | |
|-----------------------------|-------------------------------|---------|--------------------------|---------|--------------------|---------|
| | AM Peak | PM Peak | AM Peak | PM Peak | AM Peak | PM Peak |
| Northbound Vasquez Blvd. | 2.28 | 2.51 | 5.10 | 6.72 | +124 | +168 |
| Southbound Vasquez Blvd. | 5.42 | 2.23 | 6.27 | 8.15 | +16 | +265 |



Background

- Public meeting was held in August 2017
- Presentation to City Council in September 2017
- Commerce City letter to CDOT:
 - General support for One Way Pairs alternative
 - Did not support Viaduct alternative
 - Support further refinement of the alternatives
 - Identify immediate construction improvements that could be built with minimal “throwaways”



Current Status

- Draft PEL has been completed and is under review by agencies
- PEL will not select a preferred alternative but will determine project elements that are consistent across all three alternatives that could be built to make immediate improvements while minimizing “throw aways”
- A future NEPA document will further evaluate the various alternatives and identify a preferred alternative
- CDOT to start that process summer 2018

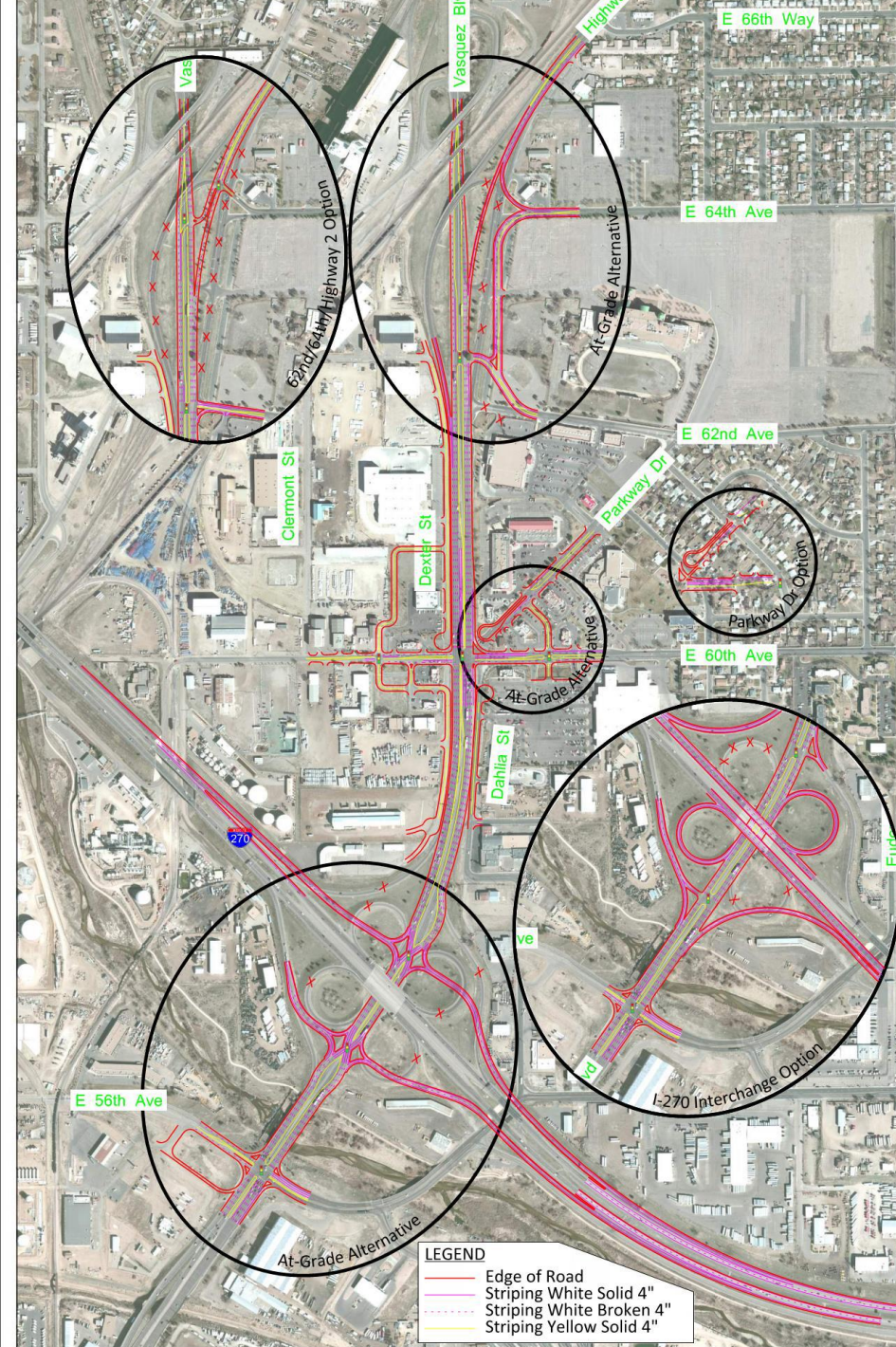


Three Alternatives

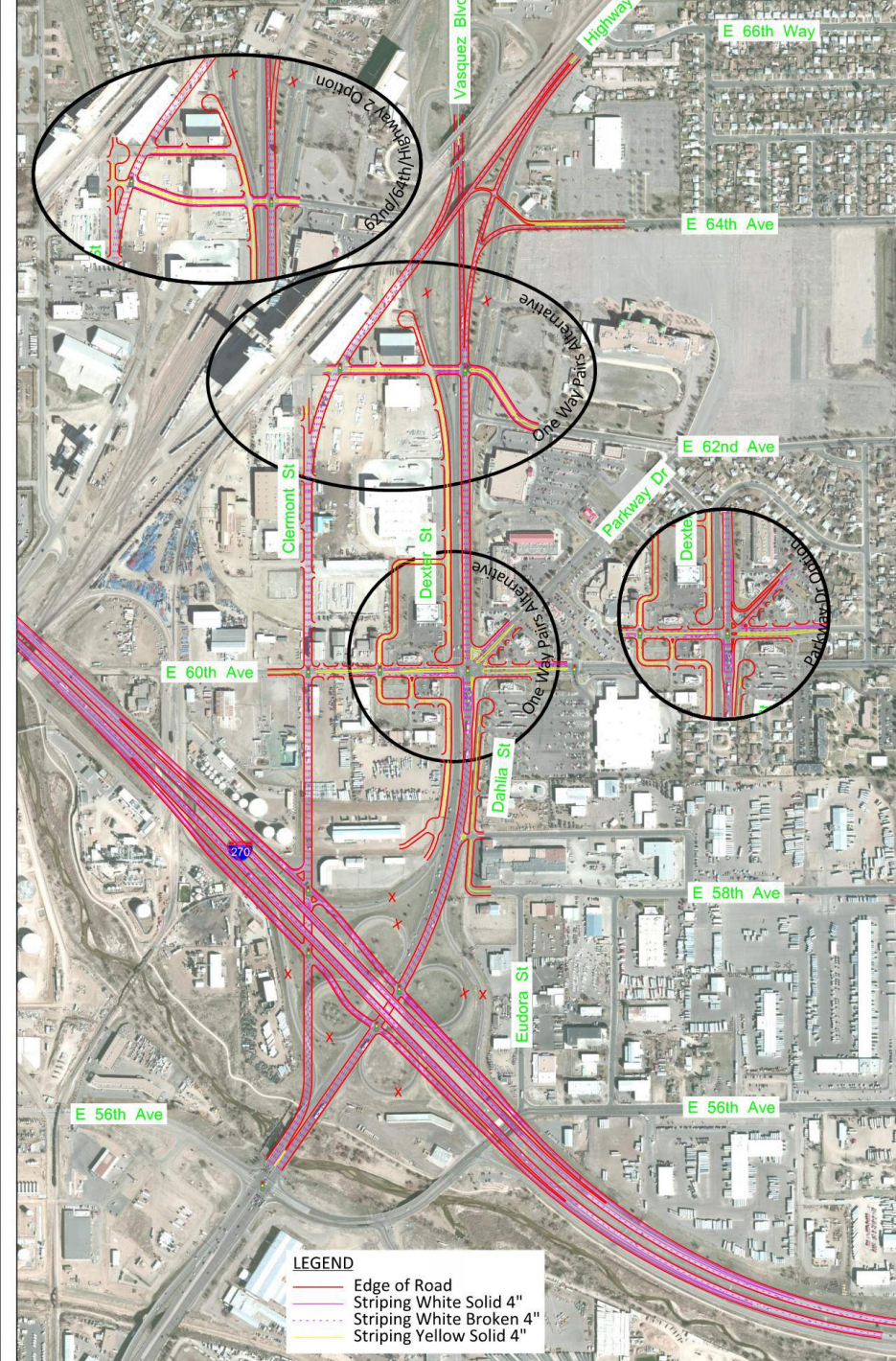
- At Grade Alternative
- One Way Pairs Alternative
- Viaduct Alternative



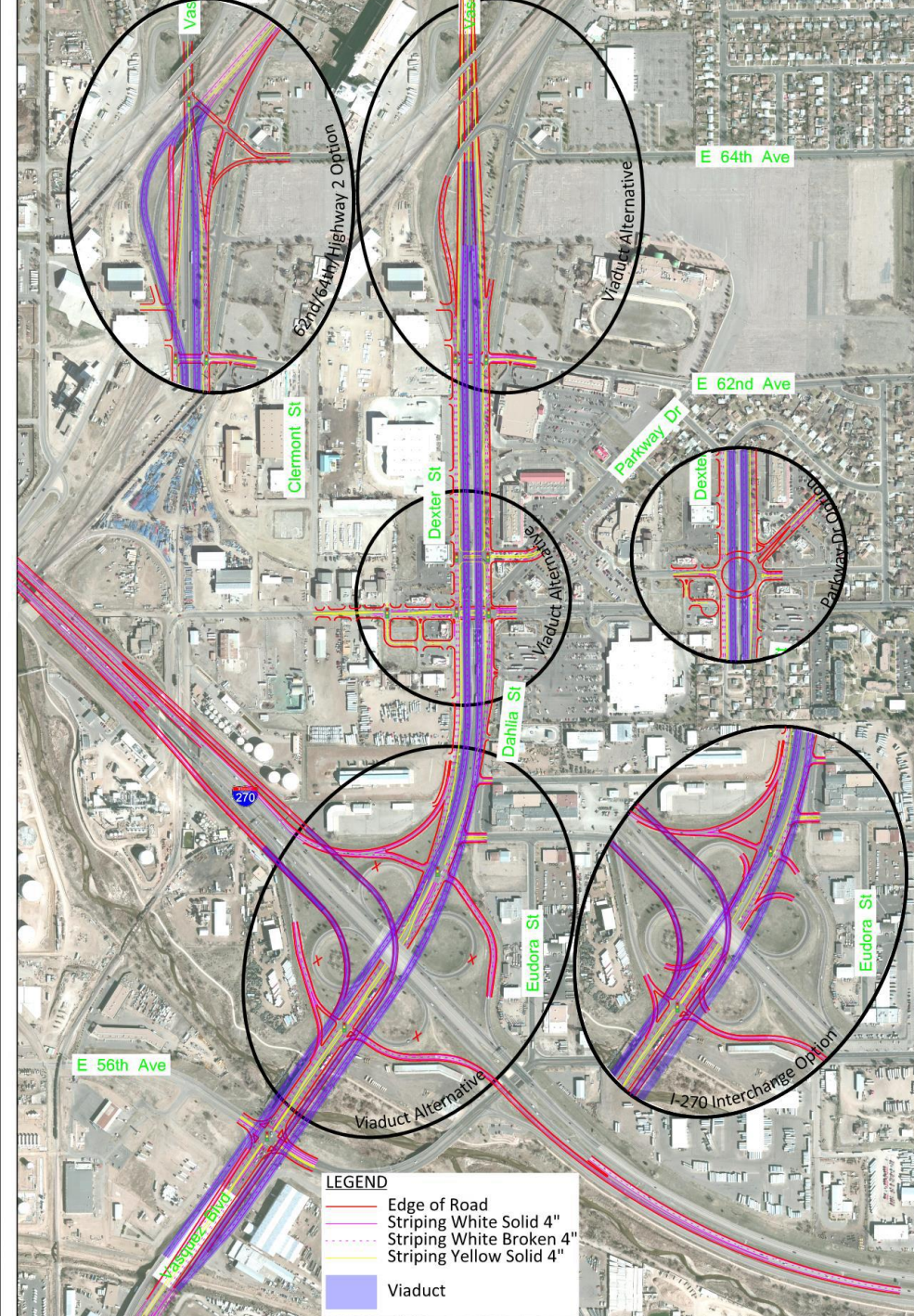
At Grade Alternative



One Way Pairs Alternative



Viaduct Alternative



Proposed Immediate Improvements



Proposed Immediate Improvements

Green = Mill and Overlay
Yellow = New Pavement

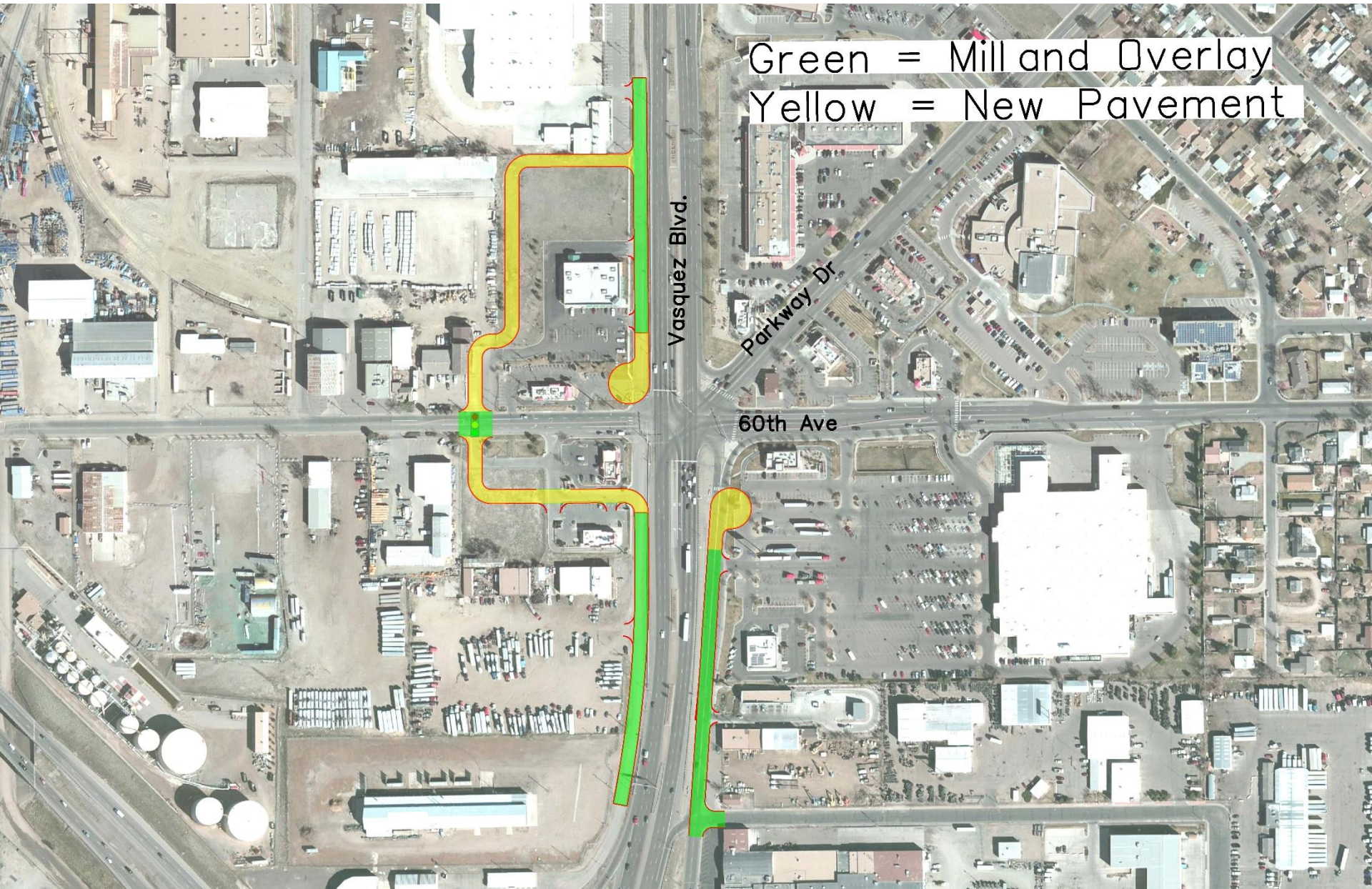
Vasquez Blvd.

Parkway Dr



60th Ave

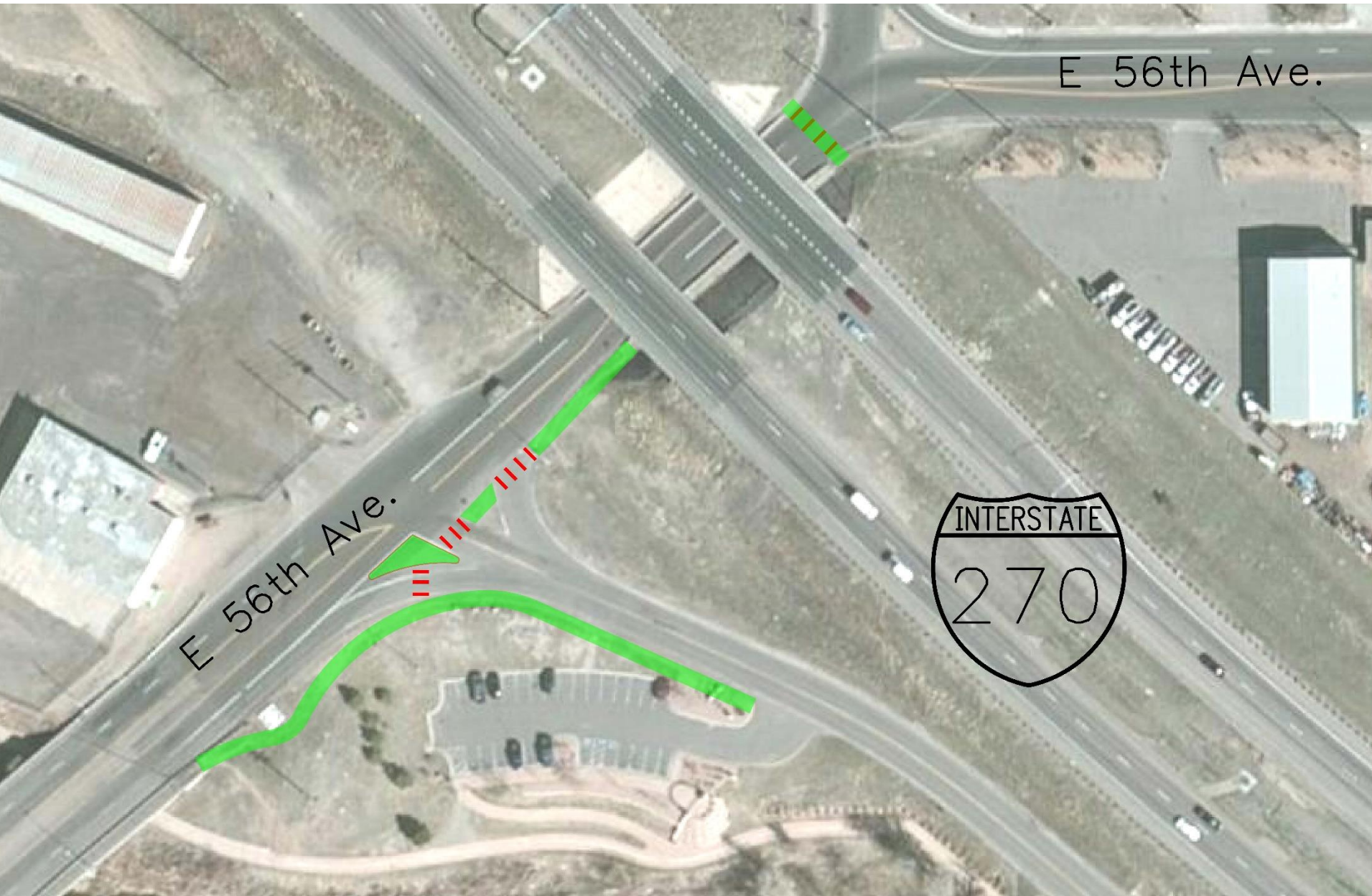
Proposed Immediate Improvements



Proposed Immediate Improvements



Proposed Immediate Improvements



Proposed Immediate Improvements

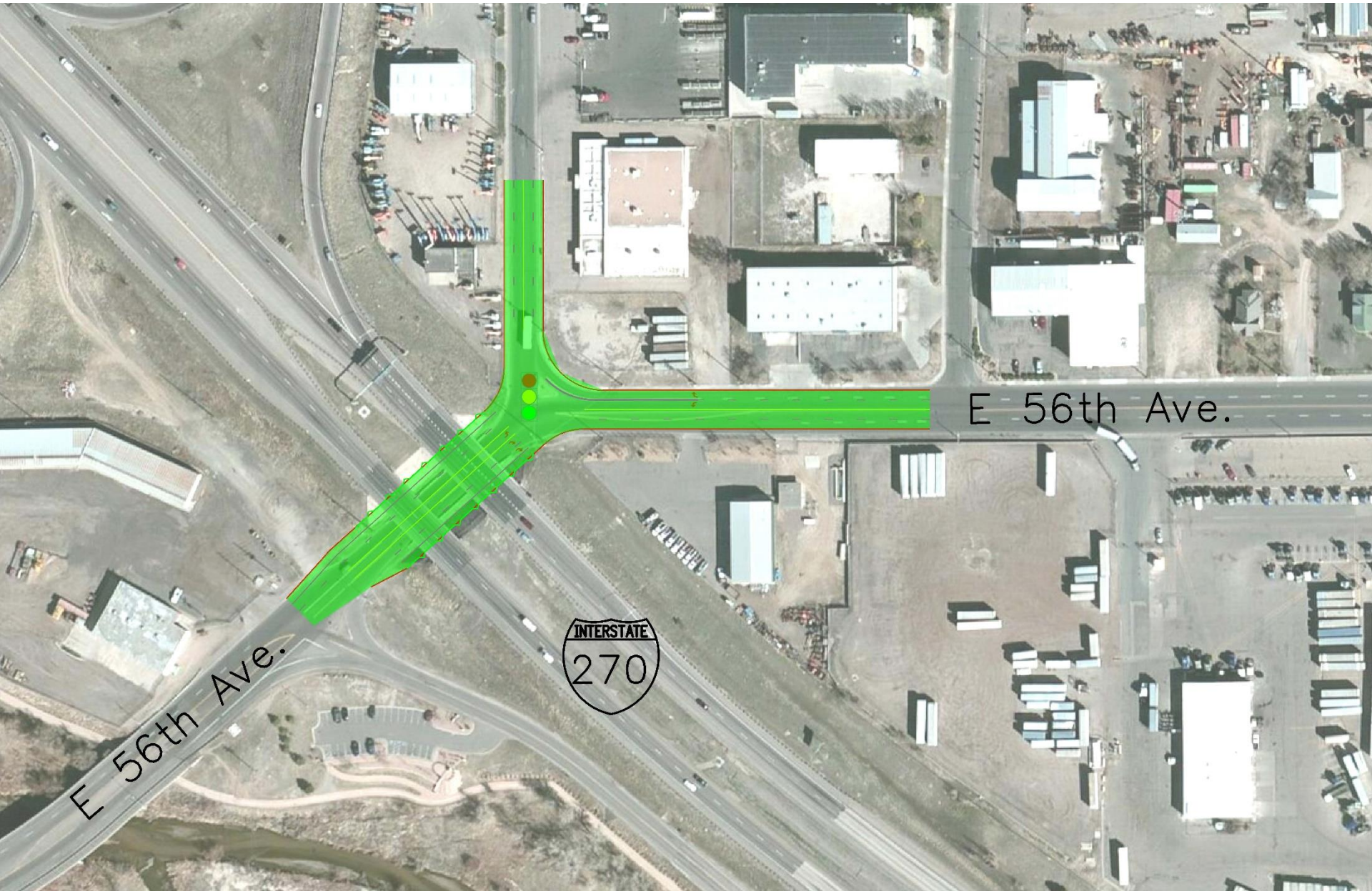


E 56th Ave.

Vasquez Blvd.

Not Recommended

Proposed Immediate Improvements



Not Recommended

Proposed Immediate Improvements





Questions & Discussion
