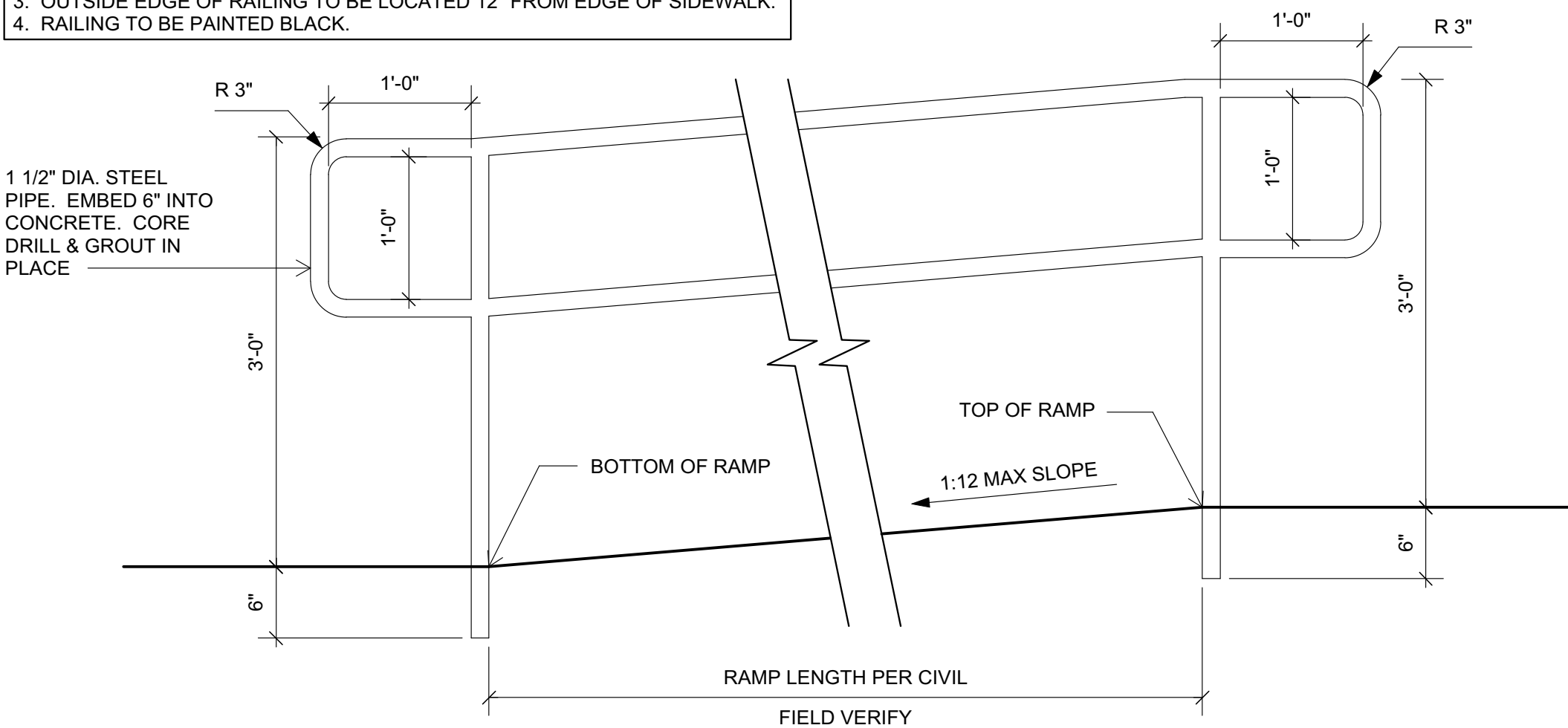


- NOTES:
1. ALL METAL JOINTS TO BE WELDED & GROUND SMOOTH.
 2. PROVIDE SUPPORT POSTS @ 5'-0" O.C. MAX.
 3. OUTSIDE EDGE OF RAILING TO BE LOCATED 12" FROM EDGE OF SIDEWALK.
 4. RAILING TO BE PAINTED BLACK.

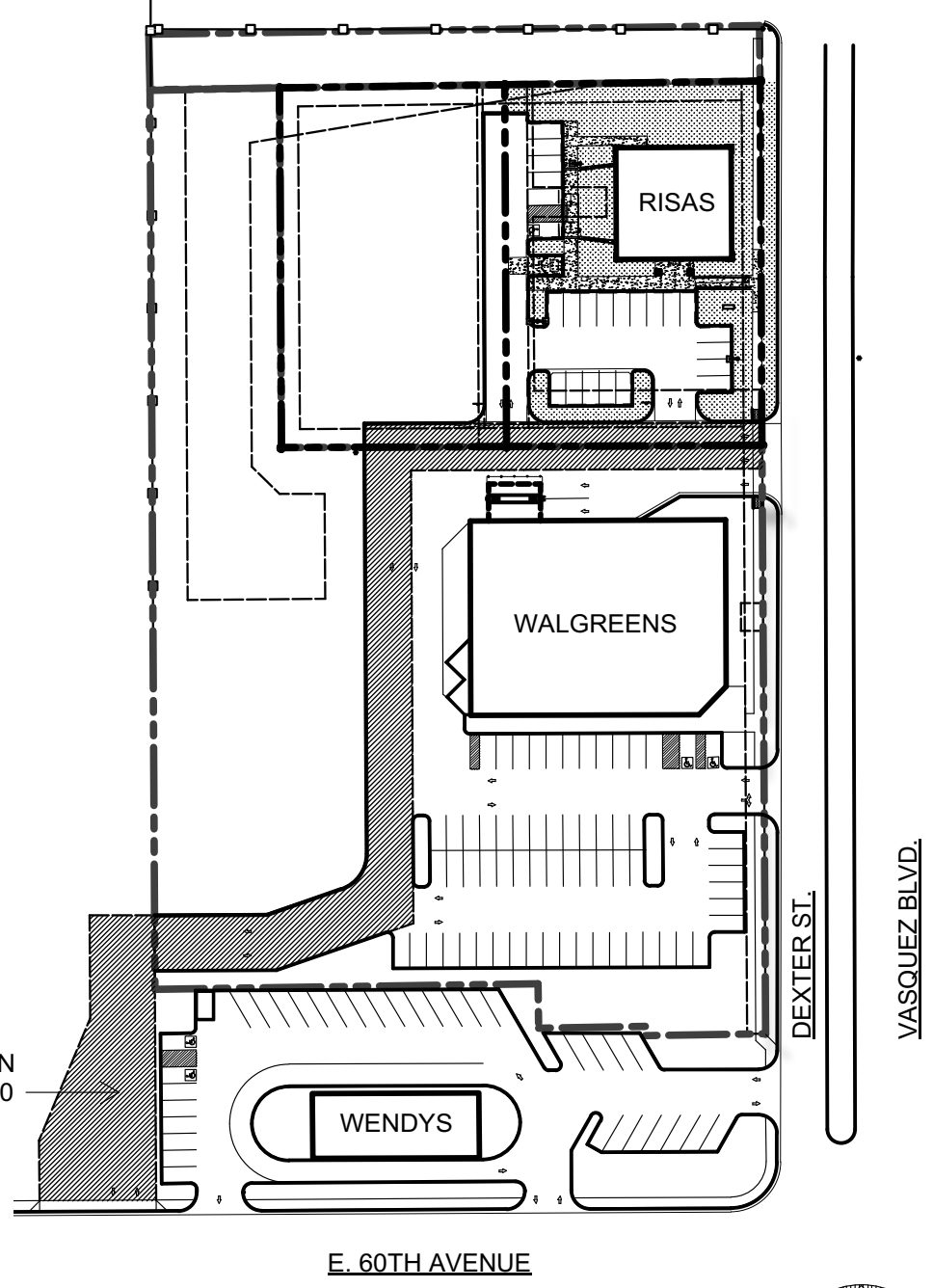


HANDRAIL DETAIL

Scale: 1" = 1'-0"

- 1 EXISTING CURB AND GUTTER TO REMAIN
- 2 EXISTING ASPHALT PAVING TO REMAIN
- 3 EXISTING CONCRETE PAVING TO REMAIN
- 4 EXISTING 5'-0" DETACHED SIDEWALK TO REMAIN
- 5 EXISTING SIDEWALK RAMP TO REMAIN
- 6 EXISTING FIRE HYDRANT TO REMAIN
- 7 EXISTING UTILITY POLE WITH STREET LIGHTS TO REMAIN
- 8 EXISTING ELECTRIC PEDESTAL TO REMAIN
- 9 EXISTING COMMUNICATIONS PEDESTAL TO REMAIN
- 10 EXISTING TREE TO REMAIN
- 11 EXISTING WATER METER TO REMAIN
- 12 EXISTING PARKING LOT LIGHT TO REMAIN
- 13 EXISTING STORM OUTFALL GRATE TO REMAIN
- 14 EXISTING CHAINLINK FENCE TO REMAIN
- 15 EXISTING PAINTED TRAFFIC ARROWS TO REMAIN
- 16 EXISTING PHARMACY DRIVE-THRU TO REMAIN
- 17 EXISTING CONCRETE BOLLARDS TO REMAIN
- 18 BUILDING ROOF DRAINS OUTLET TO CONCRETE U-CHANNEL & SIDEWALK CHASE
- 19 LANDSCAPING (SHOWN HATCHED), SEE LANDSCAPE PLAN
- 20 6" CURB AND 12" GUTTER, TYP. DASHED LINE INDICATES SPILL CURB AND SOLID LINE INDICATES CATCH CURB
- 21 ASPHALT PAVING
- 22 CONCRETE PAVING (SHOWN HATCHED)
- 23 CONCRETE SIDEWALK (SHOWN HATCHED)
- 24 ADA CURB RAMP, MAX SLOPE 1:12
- 25 PAINTED ADA PARKING STALL MARKING
- 26 ADA ACCESS AISLE
- 27 ADA PARKING / VAN ACCESSIBLE SIGN
- 28 CONCRETE WHEEL STOP
- 29 ELECTRICAL SWITCHGEAR
- 30 GAS METER
- 31 RIGHT TURN ONLY SIGN
- 32 BICYCLE RACK, SEE DETAIL ELEVATIONS
- 33 PARKING LOT LIGHT, SEE LIGHTING PLAN
- 34 TRASH ENCLOSURE, SEE DETAIL ELEVATIONS
- 35 PAINTED TRAFFIC ARROWS
- 36 ELECTRICAL TRANSFORMER
- 37 MONUMENT SIGN, SEE DETAIL ELEVATIONS
- 38 RAMP WITH HANDRAILS, MAX SLOPE 1:12. SEE HANDRAIL DETAIL THIS SHEET AND GRADING PLAN

SITE PLAN KEY NOTES





SITE ACCESS DETAIL

Scale: NTS

CITY STAFF CERTIFICATE:

APPROVED BY THE DEPARTMENT OF COMMUNITY DEVELOPMENT OF THE CITY OF COMMERCE CITY, THIS _____ DAY OF _____, 20____.

DEPARTMENT OF COMMUNITY DEVELOPMENT

 RISAS DENTAL MANAGEMENT LLC 1601 N. 7th Street, Suite 260 Phoenix, Arizona 85006 Office: (480) 339-4802	 M.J. Cassutt Architects, P.C. 7563 South Salida Court Centennial, Colorado 80016 Office: (303) 771-0113 Fax: (303) 400-1098	
RISAS DENTAL 6091 DEXTER STREET ADDITION, CO 80022 LOT 2, DEXTER STREET ADDITION, ADAMS COUNTY RECEPTION NO. 20050428000451770		
DRAWN BY: TMC	PARCEL NUMBER: 182307203002	SHT SITE PLAN 2 OF 11
CHECKED BY: TMC	PROJECT NUMBER: 2017-0004	
SCALE: VARIES	DATE: JANUARY 11, 2018	