



# Commerce City Bison Ridge Recreation Center Furniture Fixtures and Equipment

---

September 11, 2017



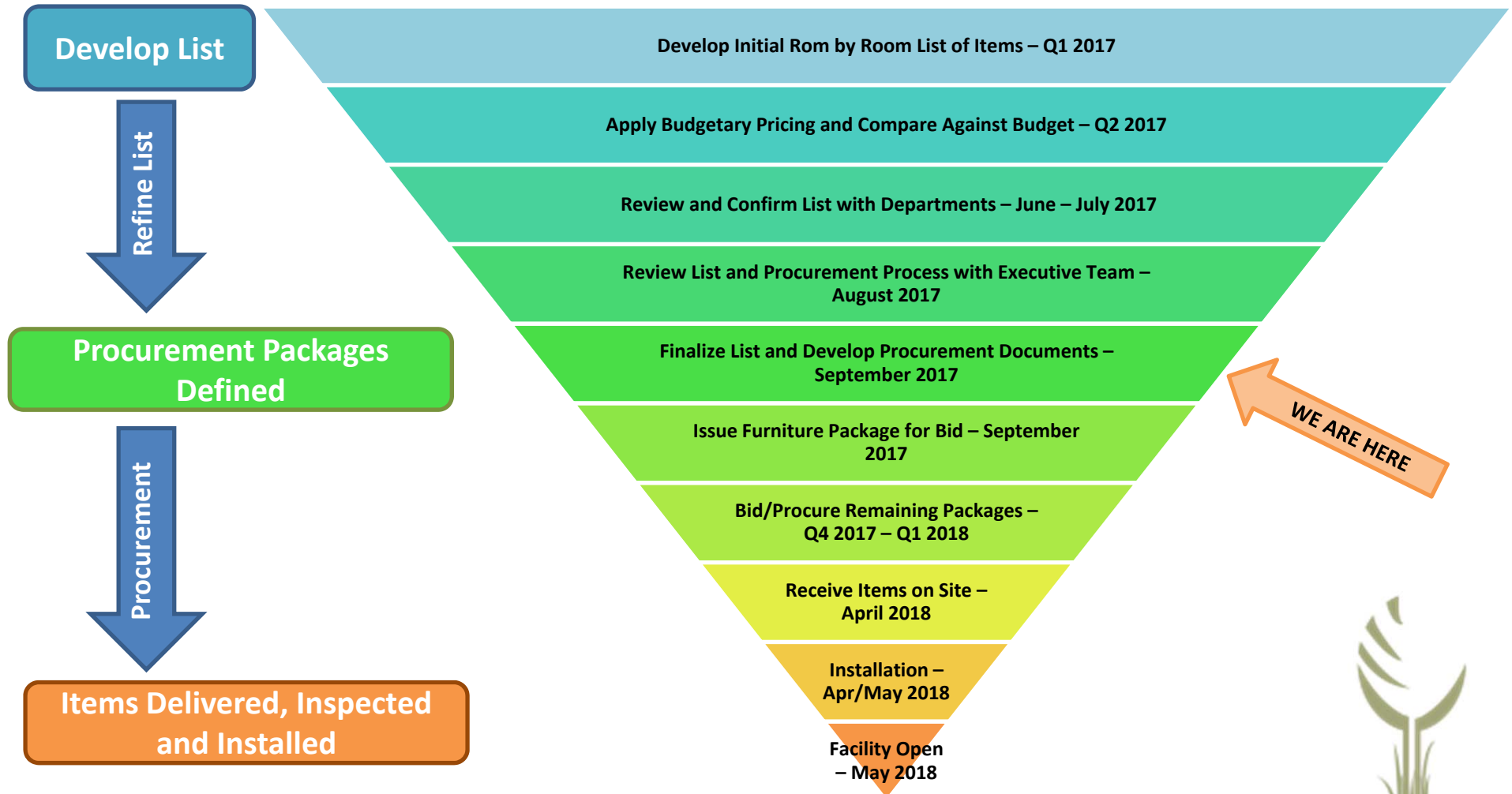
# Purpose

- Provide an overview of the Furniture Fixtures and Equipment (FF&E) selection and procurement process
- Review the major FF&E packages
- Review the FF&E budget & estimated costs
- Next steps





# New Recreation Center FF&E Process





# FF&E Categories

- Furniture
- Fitness Equipment
- Gymnastics Equipment
- Maintenance Equipment (equipment, shelving, small tools, supplies)
- Catering Kitchen Equipment
- Office Supplies (safes, shredders, staplers, paperclips)
- Aquatic Supplies (noodles, kickboards, life vests)
- Misc. Athletic Equipment (balls, weight belts)
- Other (toilet accessories, appliances, misc. electronics, Weigh & Win)
- *IT equipment procurement (computers, printers, servers, etc.) will be managed through the IT Department*





# Furniture Package

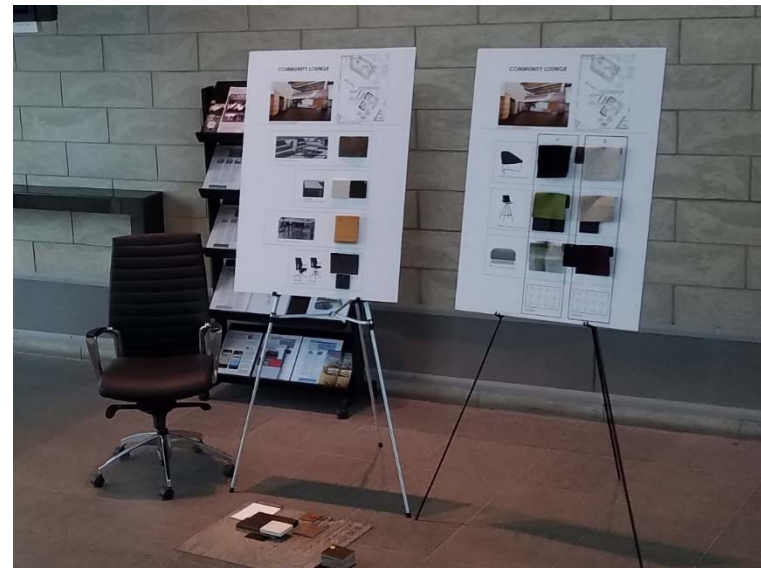
- Furnishings will include the following:
  - Seating and tables in community lounge and waiting areas
  - Tables and chairs for community rooms
  - Tech lab tables, chairs and seating area
  - Party room and child watch tables and seating
  - Office furniture and modular workspaces





# Furniture Selection

- Furnishing options were proposed by the architect and reviewed for durability and functionality by staff
- City Council provided input August 28<sup>th</sup> on final color and finish selections
- The following slides are representative of the key furniture pieces and final color selections

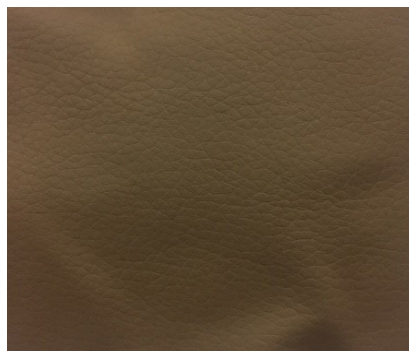




# COMMUNITY LOUNGE



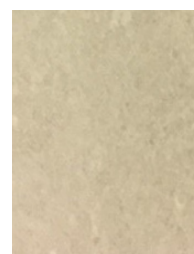
COMMUNITY LOUNGE SOFA



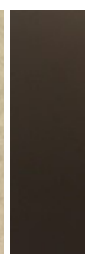
COMMUNITY LOUNGE  
SIDE CHAIR



COMMUNITY LOUNGE  
SIDE TABLES



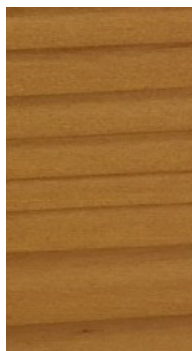
CERAMIC TOP



BRONZE  
LEGS



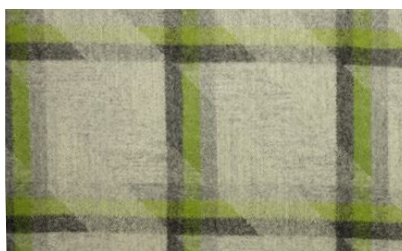
COMMUNITY LOUNGE TABLE



COMMUNITY LOUNGE STOOLS



COMMUNITY LOUNGE BENCH



# PUBLIC WAITING



PUBLIC WAITING SOFA



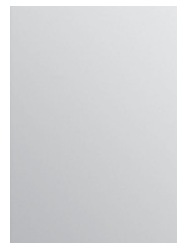
PUBLIC WAITING SIDE CHAIRS



PUBLIC WAITING TABLE



WHITE SOLID SURFACE



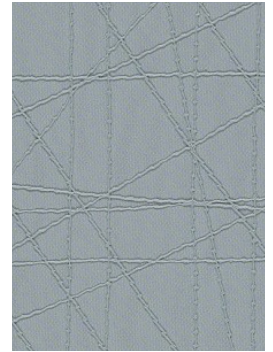
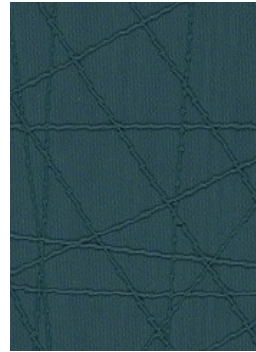
POLISHED  
CHROME BASE



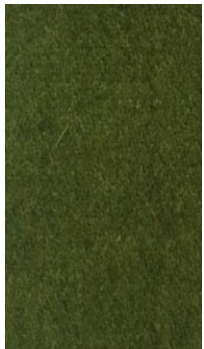
# GENERAL CIRCULATION



GENERAL CIRCULATION SOFA



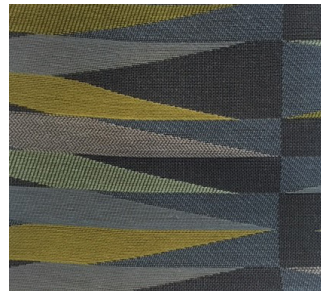
GENERAL CIRCULATION SIDE CHAIR



GENERAL CIRCULATION  
SIDE TABLE



WHITE SOLID SURFACE TOP



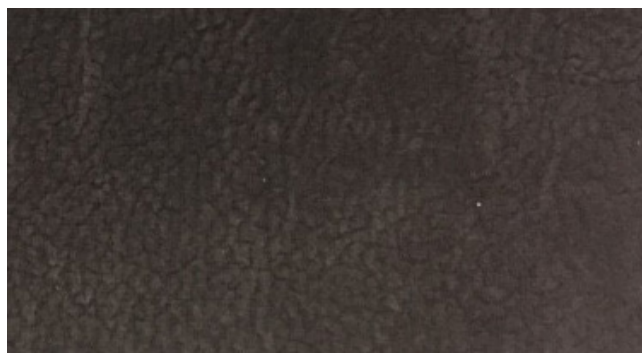
UPHOLSTERED SIDES



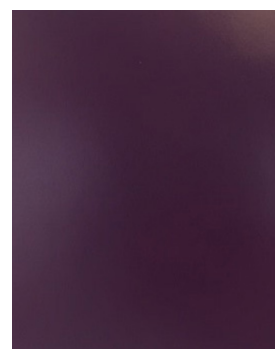
# TECH COMMONS



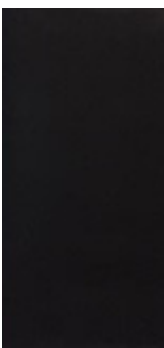
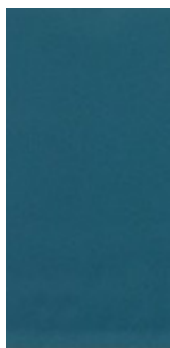
TECH COMMONS SOFA



TECH COMMONS LOUNGE CHAIR



TECH COMMONS SIDE CHAIR

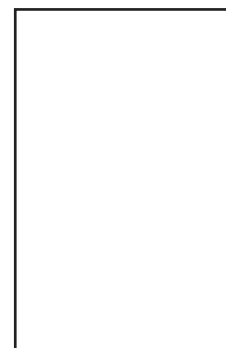


TECH COMMONS TASK CHAIR

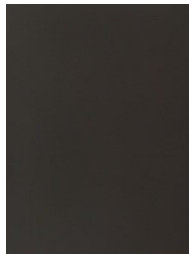
WHITE BASE



TECH COMMONS TASK TABLE



WHITE LAMINATE TOP



TECH COMMONS SIDE TABLE

# CHILD WATCH



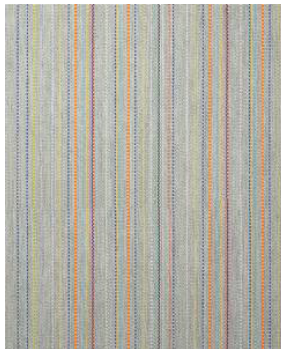
CHILD WATCH TASK CHAIR



CHILD WATCH TASK TABLE



CHILD WATCH LOUNGE CHAIR



CHILD WATCH SIDE CHAIR



CHILD WATCH SIDE CHAIR







# Fitness Equipment

- New fitness equipment will include the following:



- Cardio Equipment  
(Various Treadmills  
and Exercise Bikes)
- Selectorized and  
Free Weight  
Machines
- Racking Equipment





# Cardio Equipment

- The proposed mix of cardio equipment is consistent with equipment at the current center and comparable to types of equipment at other metro area recreation centers

## Treadmills



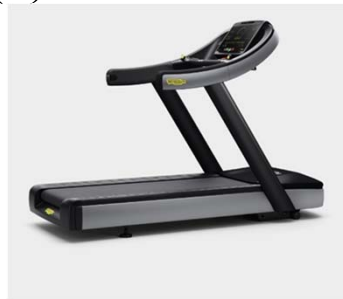
Cybex 770T-E3 (3)



Star Trac 8 Series TRX (2)



Discover 95T SE3 (3)



Excite 1000 (2)



# Cardio Equipment

## Exercise Bikes



Expresso HD Upright (3)



Discover 95C SE3  
Upright Lifecycles (3)



Star Trac 8 Series  
Recumbent (3)



Expresso HD  
Recumbent (1)





# Cybex Selectorized Equipment

- Key Features
  - Designed for all fitness levels
  - Durable
  - Enclosed weight stacks
- Unique benefits provided to the users
  - Easy to find levers / knobs
  - QR codes for proper movement





# Cybex Free Weight Machines

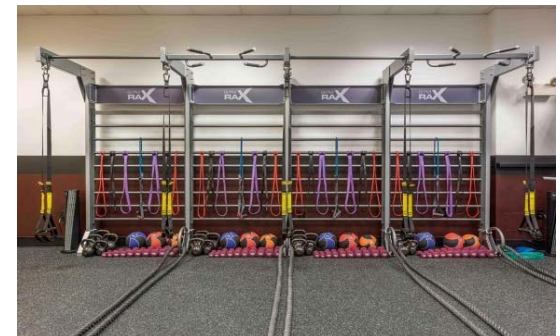
- Key Features
  - Compliments Cybex Selectorized
  - Durable
  - Rubber encased weights
- Unique benefits provided to the users
  - Space efficient
  - User friendly / non-intimidating





# GYM RAX Racking Equipment

- Key Features
  - Maximizes space
  - Adjustable storage
  - User friendly / multiple stations
- Unique benefits provided to the users
  - Microban coating prevents germs
  - Unlimited configurations
  - Crossfit





# Gymnastics Equipment

- Flooring, Mats, trampolines and equipment to outfit the 10,000 square foot gymnastics facility





# Maintenance Equipment

- Scissor Lift
- Floor Scrubber
- Carpet Extractor
- Shelving, workbench
- Small Tools & Equipment (ladders, bench grinders)
- Supplies (mops, buckets)



- Used for regular maintenance, emergency clean up and decorating facility for events and holidays
- On site equipment allow for quicker response to maintenance and emergency cleanups
- Provides longevity and extends life of facility
- A clean and well maintained facility increases safety





# Catering Kitchen Equipment

- Microwave
- Commercial Dishwasher
- Refrigerator
- Commercial Coffee Maker
- Service Carts
- Hot Holding Cabinets
- Portable Warming Bins
- Ice Maker - Large Capacity



- Kitchen equipment installation must be inspected by the health department prior to issuance of the Certificate of Occupancy.
- Recommend moving the scope of work for kitchen equipment procurement & installation to the CM/GC so they can closely manage the schedule



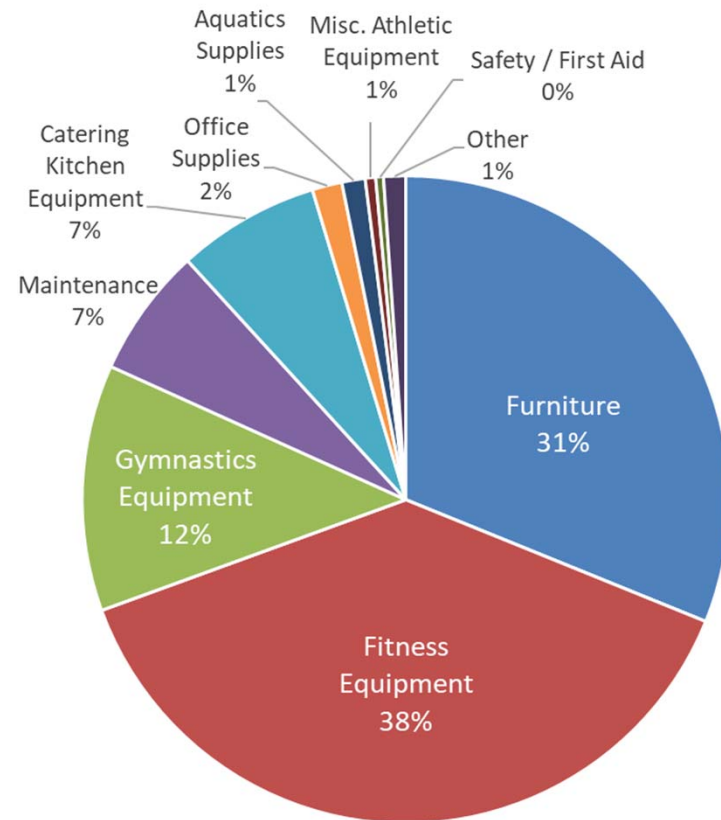




# FF&E Estimated Cost

Category	Estimated Cost
Furniture	\$481,000.00
Fitness Equipment	\$592,000.00
Gymnastics Equipment	\$190,000.00
Maintenance	\$100,000.00
Catering Kitchen Equipment	\$110,000.00
Office Supplies	\$23,000.00
Aquatics Supplies	\$18,000.00
Misc. Athletic Equipment	\$8,000.00
Safety / First Aid	\$6,000.00
Other	\$17,000.00
<b>Subtotal</b>	<b>\$1,545,000.00</b>
Estimated Freight / Installation 5%	\$77,250.00
FF&E Project Contingency 15% of Estimate	\$231,750.00
<b>Total</b>	<b>\$1,854,000.00</b>

<b>Budget</b>	<b>\$2,034,000.00</b>
---------------	-----------------------





# Factors Impacting Cost

- Costs are budgetary only, actual costs will be known once bids are received
- Furniture is a commodity with price fluctuations.
- Market conditions – similar to contractors, suppliers are also experiencing a high demand for goods
- Additional items may be identified as construction continues or during facility activation
- *Recommend reserving an allowance for needs discovered during first year of operation*





## Next Steps

- Finalize procurement packages and develop procurement documents
- Solicit bids for long lead items, i.e. furniture
- Submit procurement contracts over \$250,000 for Council approval – furniture and fitness equipment

