



2017 Mosquito Control Program Overview

.....●
●.....
June 5, 2017

Program Objectives

- Reduce the mosquito population in the City through habitat reduction and larvae control
- Decrease the risk of West Nile Virus (WNV) transmission
- Increase education & awareness of mosquito-related diseases



Program Overview

- City solicited proposals in Spring 2017
- Selected Vector Disease Control, Inc. for a 3-year contract to:
 - Identify & monitor potential breeding spots
 - Treat known locations
 - Trap & analyze adult mosquitos
 - Monitor for the West Nile Virus
 - Respond to calls from the hotline at: **(303) 428-5908**



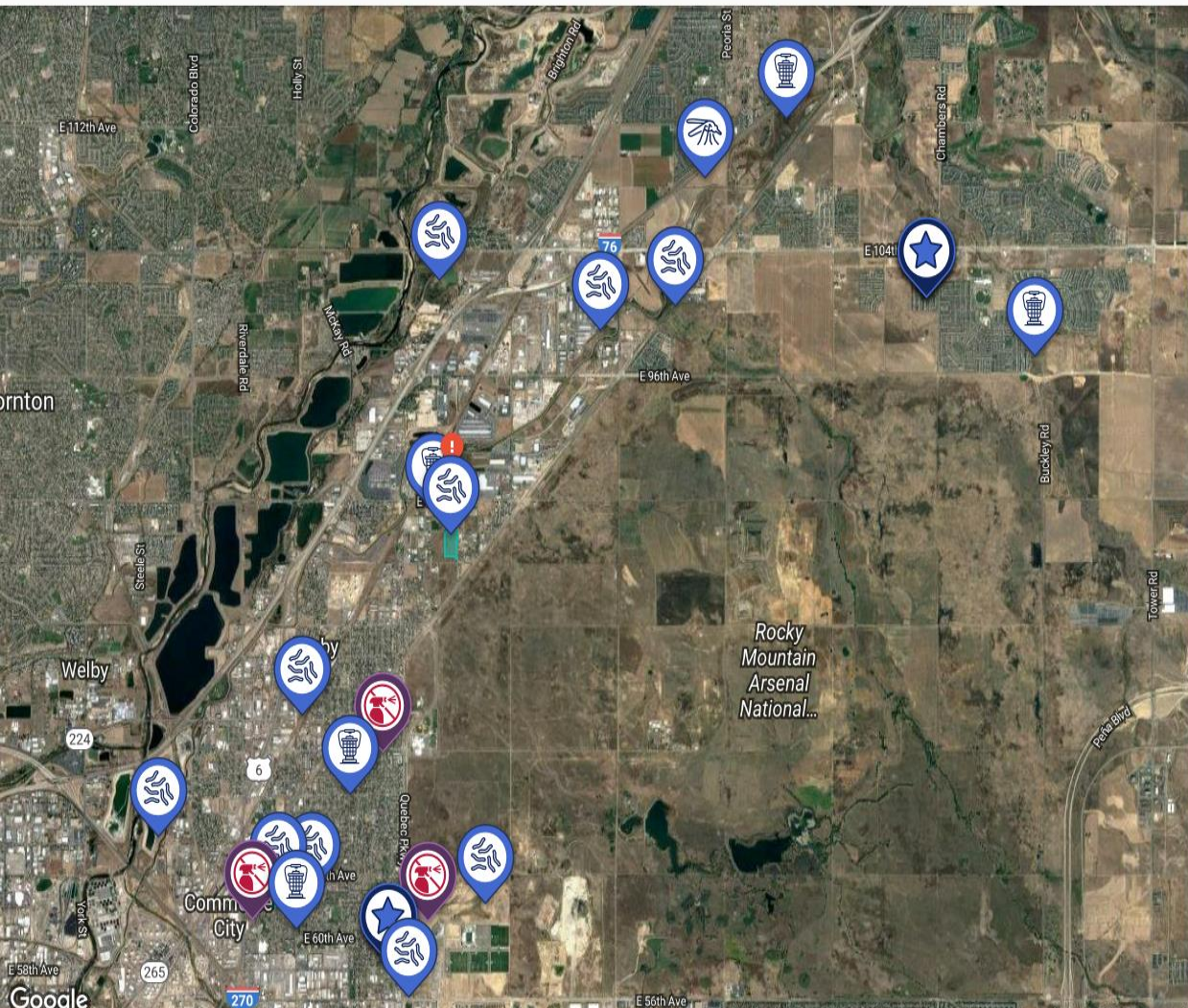
Field Technician Map

All Sites ▾ 🔍

Currently showing: Traps, Larvicide, Adulticide, Service, No Spray

Filter sites by categories

- 
TRAPS
- 
LARVICIDE
- 
ADULTICIDE
- 
LANDING
- 
SERVICE
- 
NO SPRAY
- 
ALL PINS



ADD NEW SITE

ACTIVE SITES

- **Adulticide**
LAT 39.892 / LONG -104.850
Adulticide
- **CC A**
LAT 39.798 / LONG -104.902
Larvicide
- **CC A**
LAT 39.798 / LONG -104.902
Larvicide
- **CC B**
LAT 39.808 / LONG -104.889
Larvicide
- **CC C**
LAT 39.816 / LONG -104.946
Larvicide
- **CC B**
LAT 39.808 / LONG -104.889
Larvicide
- **CC C**
LAT 39.816 / LONG -104.946
Larvicide
- **CC D**
LAT 39.830 / LONG -104.921
Larvicide
- **CC E**
LAT 39.810 / LONG -104.919
Larvicide

Field Technician Map

All Sites



Currently showing: Traps, Larvicide, Adulticide, Service, No Spray

Filter sites by categories



TRAPS



LARVICIDE



ADULTICIDE



LANDING



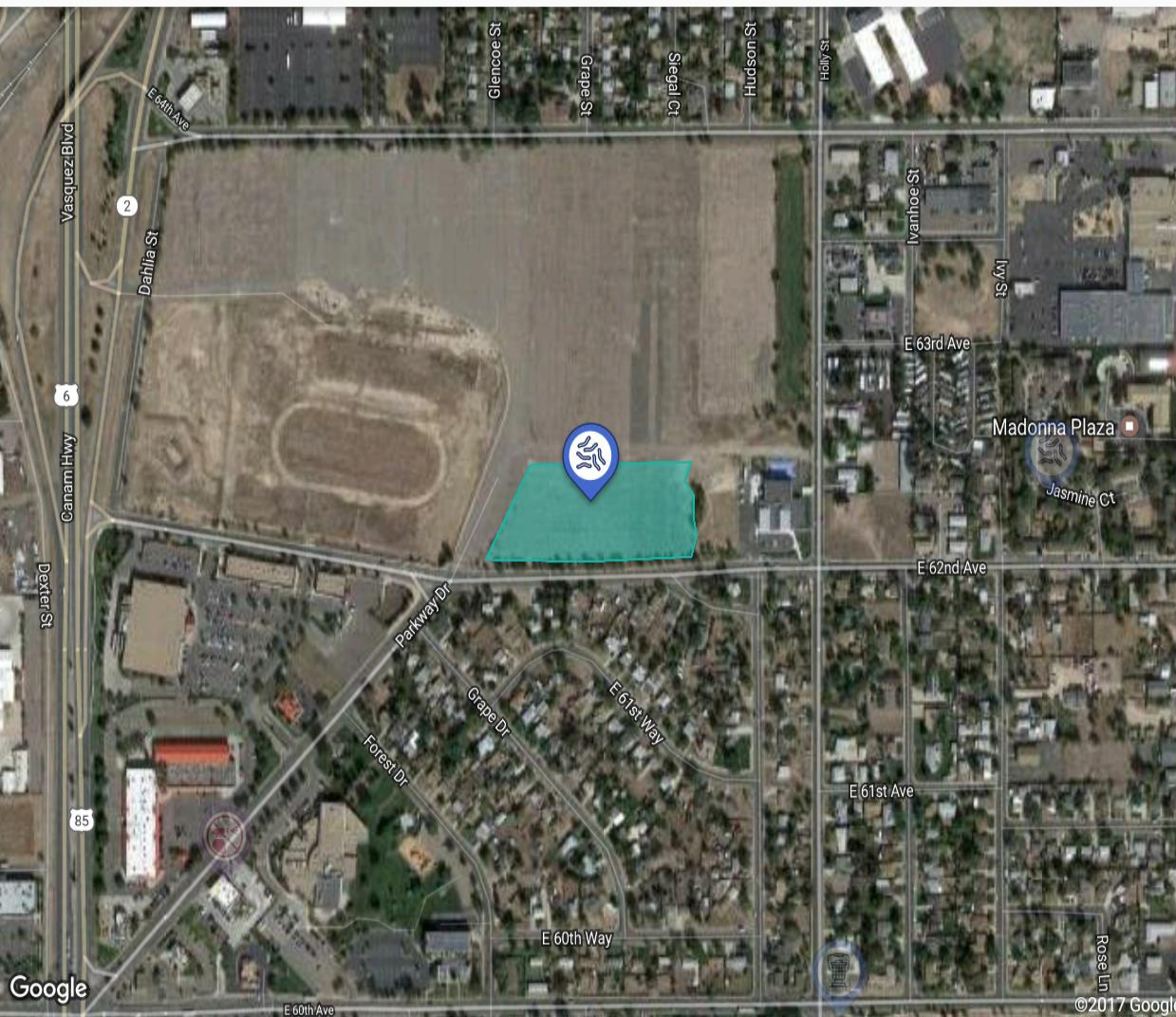
SERVICE



NO SPRAY



ALL PINS



SELECTED SITE



CC J

Larvicide

Location created 5/21/17

LAT 39.809 | LONG -104.926

SITE REMINDER SCHEDULE

Trap starting on: 05/23/17

NONE

Larval starting on: 5/15/17

EVERY 7 DAYS

Adult starting on: 05/23/17

NONE

SITE NOTES

ADD NOTE

Leave a note for this site.

CREATE DATA ENTRY

TRAP SITE

LARVICIDE

ADULTICIDE

LANDING RATE

Associated Site Masters: LARVAL

SITE ENTRY HISTORY

Sunday, May 21, 2017

Resources

- Citizen Hotline: **(303) 428-5908**
- [City website](#)
- [Vector Disease Control International](#)
- **Colorado Health Emergency Help Line:**
1-877-462-2911
7:00 a.m. to 11:00 p.m. Monday thru Friday
9:30 a.m. to 8:00 p.m. Saturday and Sunday



Prevention Measures

Remember and practice the four **D**s:

- **D**EET: use DEET-enhanced insect repellent
- **D**ress: in long-sleeves and pants
- **D**usk to **D**awn: avoid the outdoors from dusk until dawn
- **D**rain: drain standing water outside your home





Questions

A decorative horizontal dotted line in a dark olive green color spans across the lower portion of the slide. It features two solid dark olive green dots: one positioned near the end of the first dotted line segment, and another positioned at the start of the second dotted line segment.