



# Commerce City City Council meeting

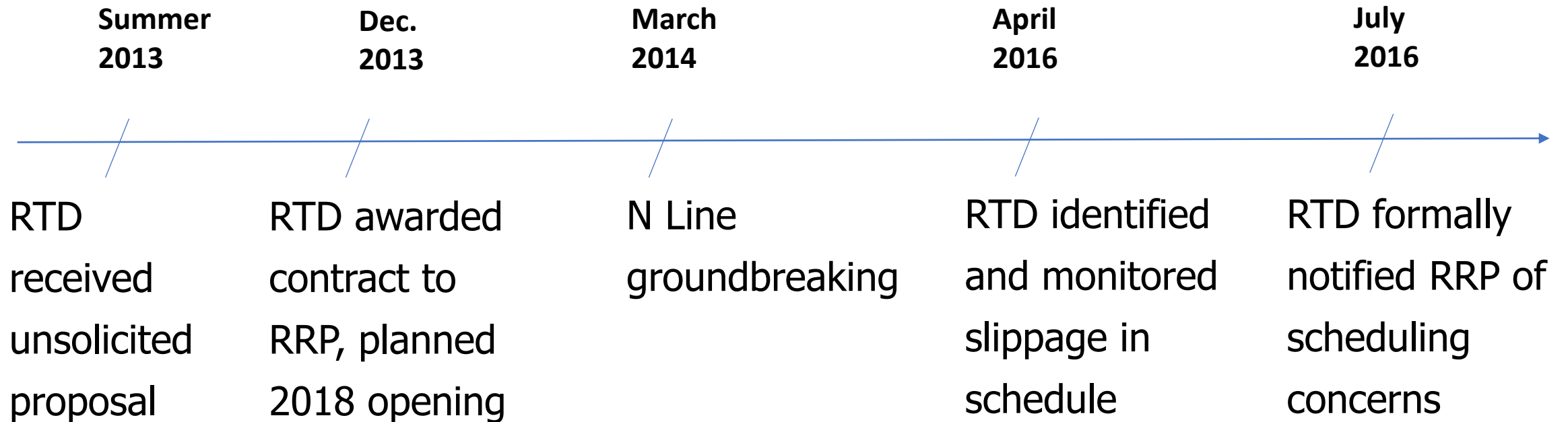
June 5, 2017

# N Line

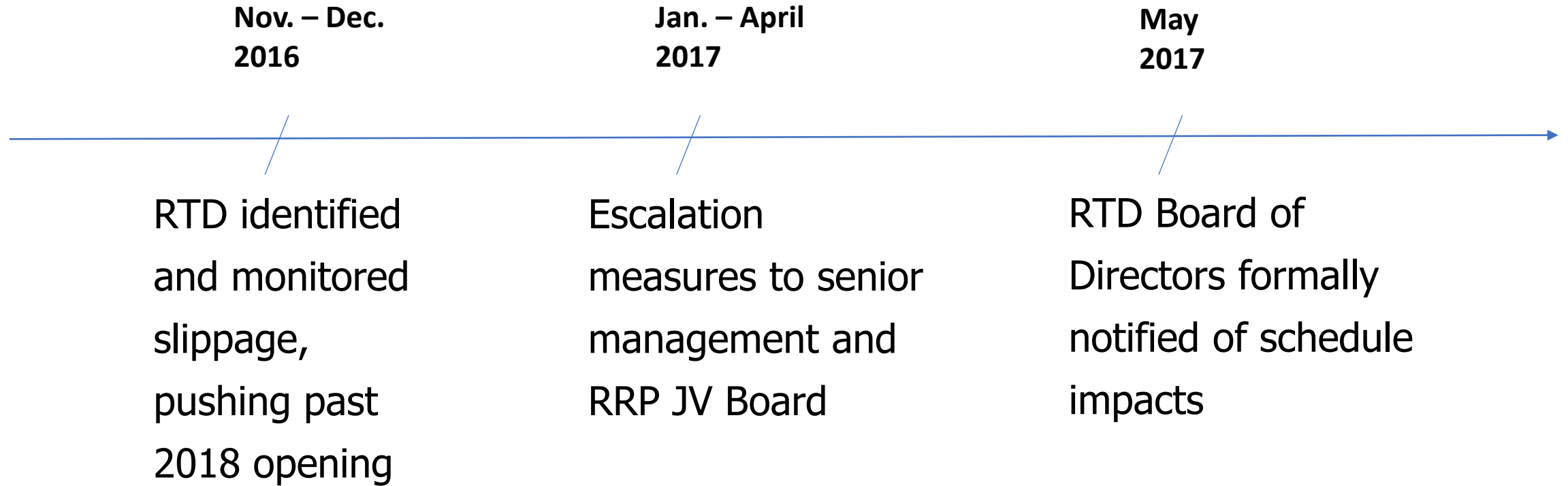
- 18.5 miles, 13 under construction
- Electrified commuter rail
- 8 stations, 6 under construction
- Frequency
  - 20-minute peak
  - 30-minute off-peak
- 27 minutes — Union Station to Eastlake•124<sup>th</sup>
- Single track with multiple passing tracks
- Serves Denver, Commerce City, Thornton, Northglenn, Adams County



# N Line - Background



# N Line - Background



# N Line - Background

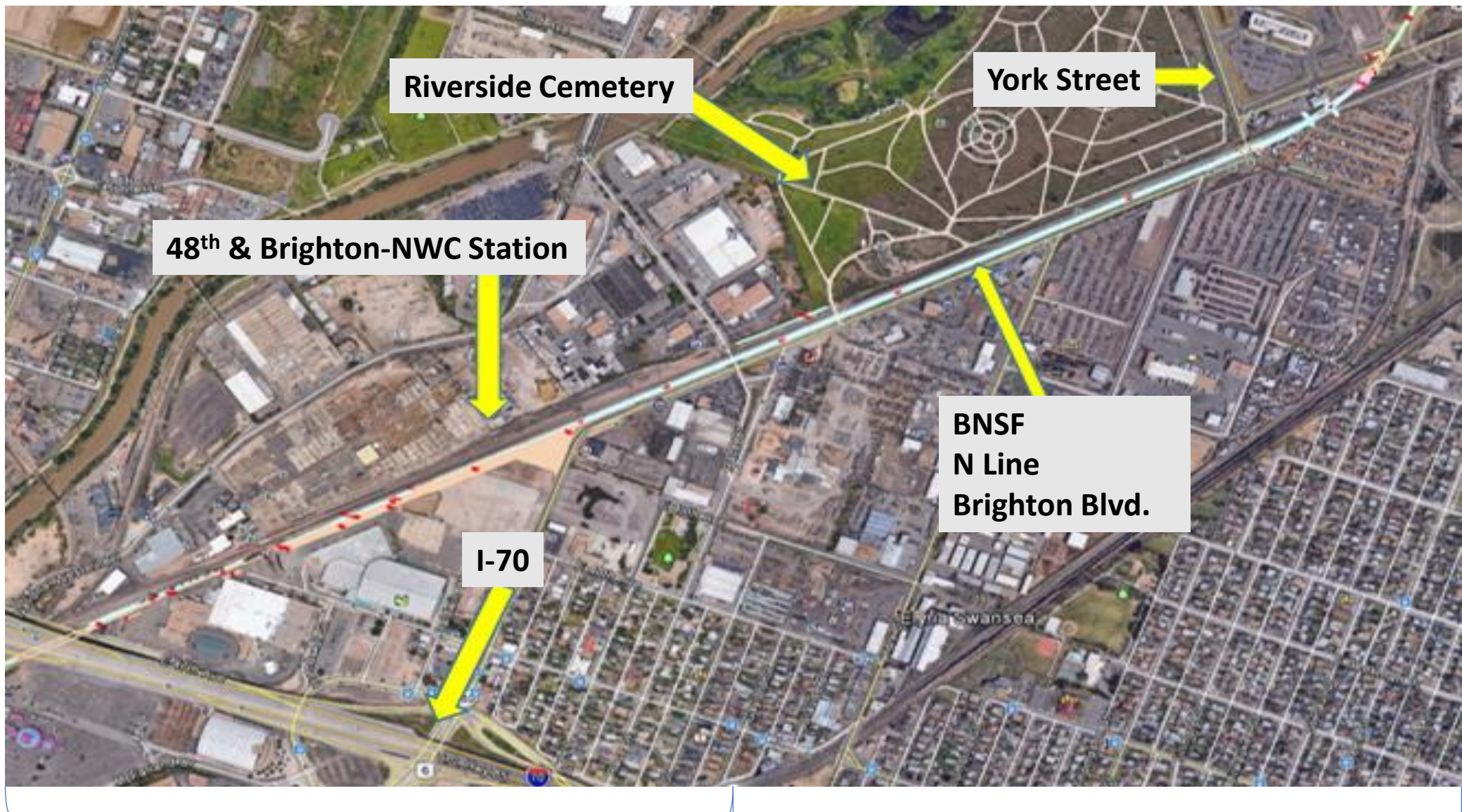
- RTD's role in a design-build project is to provide oversight
  - Monitor slippage in construction schedule
  - Monitor the quality of work and point out any construction issues that need to be corrected (quality control)
  - Contractually, RTD cannot micromanage RRP and direct how to achieve the agreed-to-milestones
- RRP is responsible for managing their design and construction schedule and quality of the work

# N Line - Background

- Schedule impacts include:
  - First four miles north of Denver Union Station
  - Working with the railroad
  - Receiving third party approvals







Area C

Area D



# N Line – Moving forward

- RTD is working with RRP to determine a timeframe for project completion
  - Determining steps to develop new schedule
  - Providing greater level of guidance to RRP on how to best deliver a new schedule
  - Continue quality control measures without micromanaging
  - Holding RRP accountable for their contractual responsibilities





# N Line – Moving forward

- University of Colorado A Line and B Line waiver extensions are not directly impacting N Line schedule
- Operational systems on the University of Colorado A Line (as well as the B and G Lines) will operate the N Line
  - RTD staff is committed to identifying lessons learned and are implementing them on N Line



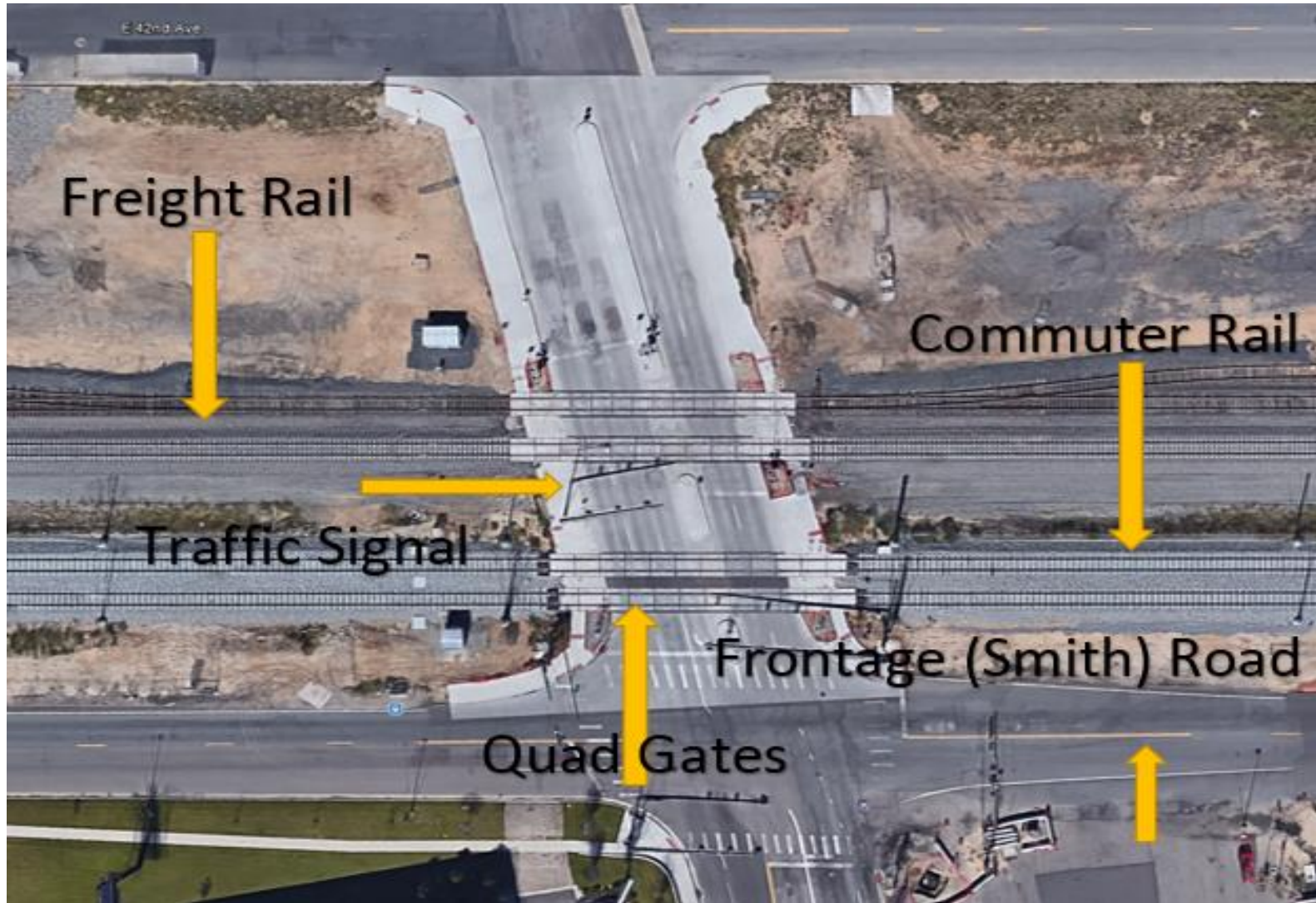
# N Line – differences from EAGLE project

- Lessons learned
- No quad gates
- Do not have adjacent freight lines, except in Denver
- Do not have as complex roadway geometry and associated traffic signals as EAGLE project

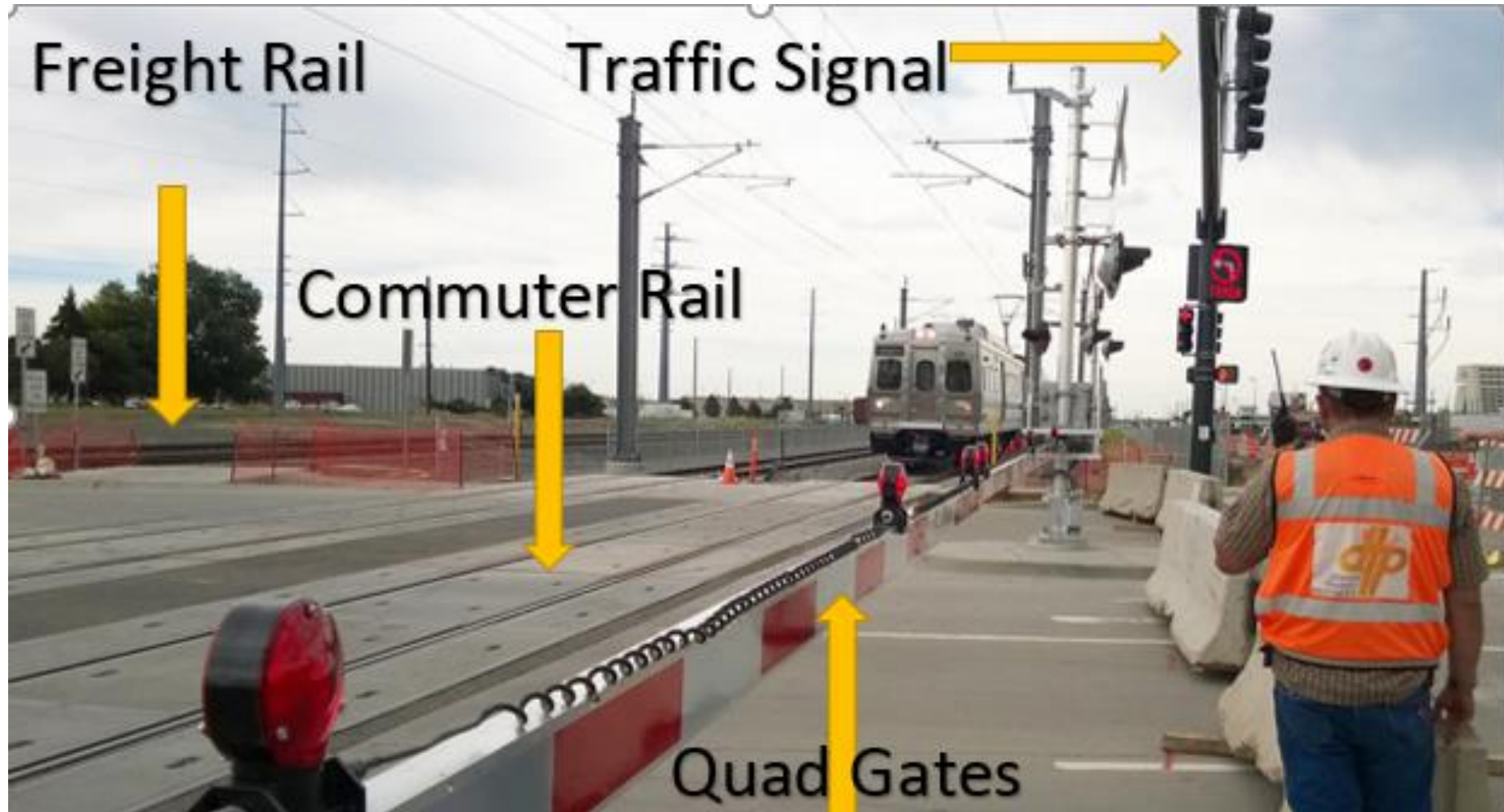




# University of Colo. A Line – Monaco crossing

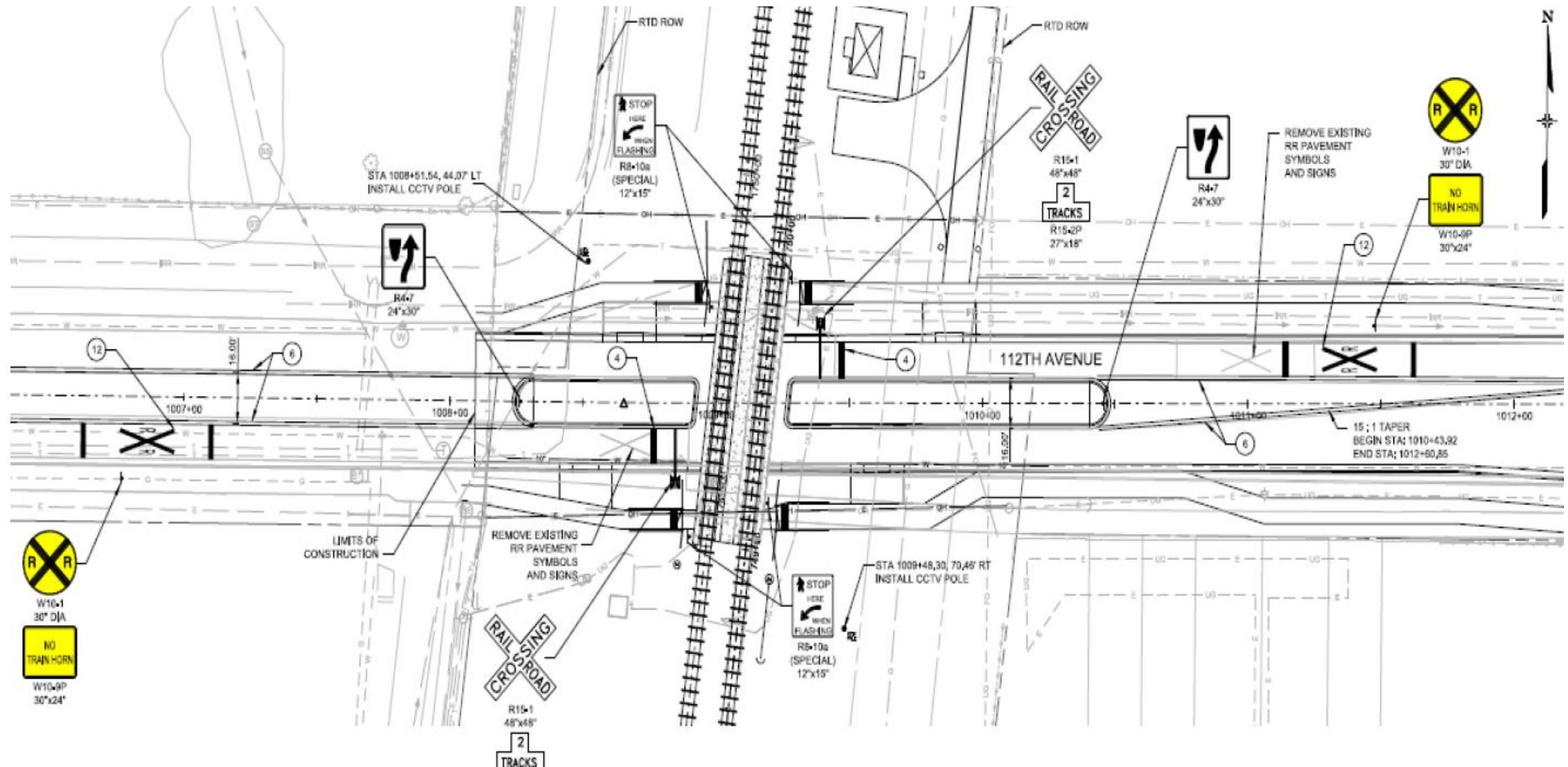


# University of Colo. A Line – Monaco crossing





# N Line – 112<sup>th</sup> Avenue Crossing



# N Line – 112<sup>th</sup> Avenue Crossing





# N Line – Construction Progress Eastlake-124<sup>th</sup> Station

January 2017



May 2017





# N Line – 120<sup>th</sup> Ave. Bridge looking south to 112<sup>th</sup> Ave.





# N Line – Looking north from Northglenn-112<sup>th</sup> Station





# N Line – Grange Hall





# N Line – 104<sup>th</sup> Ave. Bridge

January 2017



February 2017

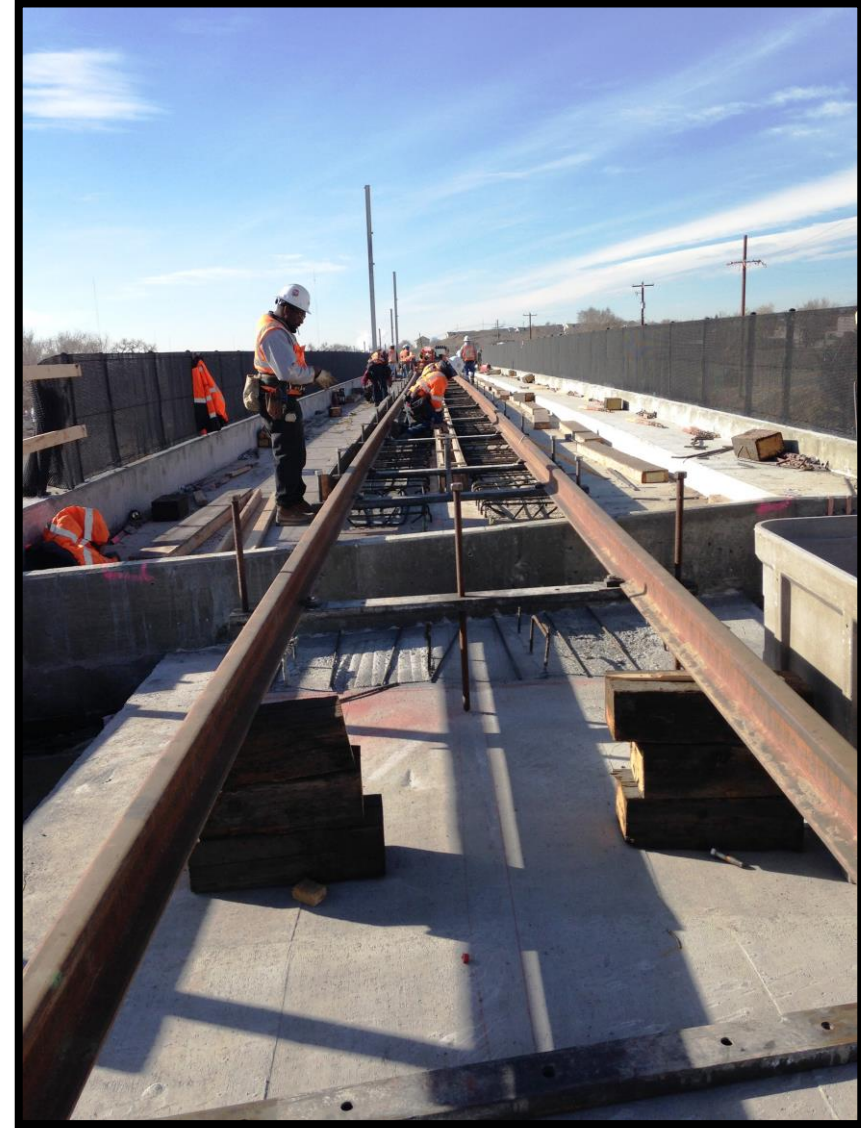


March 2017





# 88<sup>th</sup> Avenue Bridge





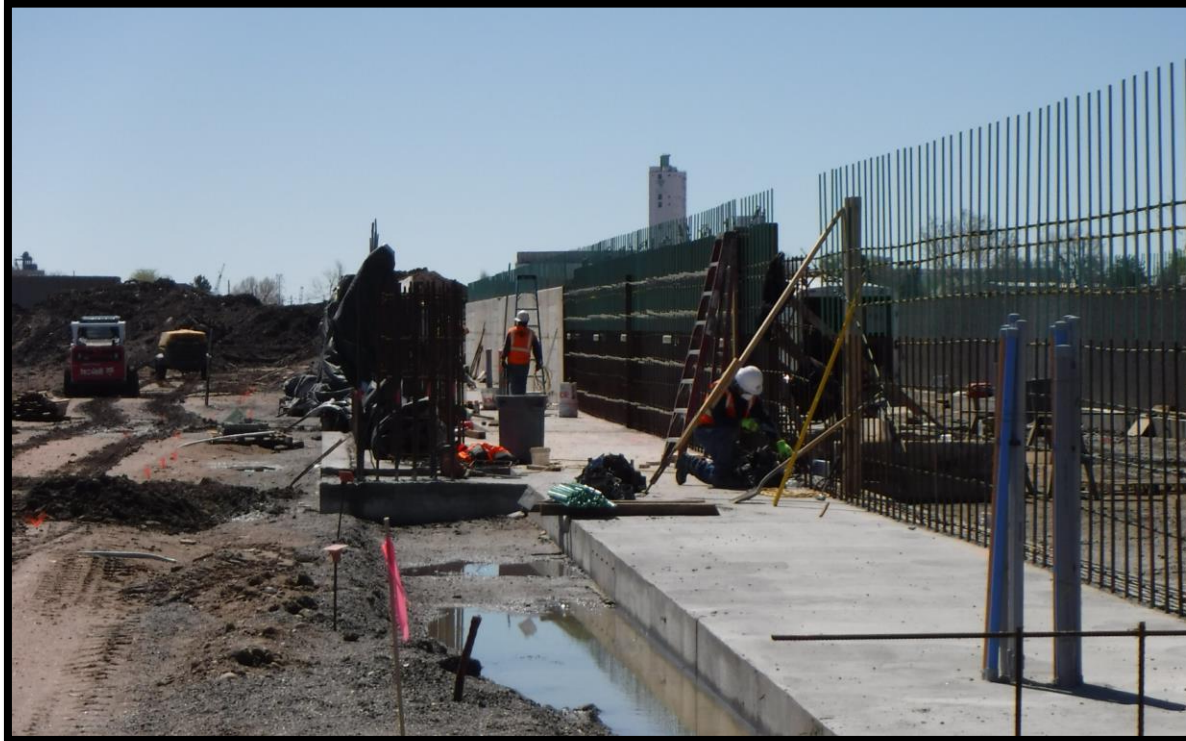
# 88<sup>th</sup> Avenue Station/Tunnel





# Commerce City-72<sup>nd</sup> Station

April 2017



May 2017





# Commerce City-72<sup>nd</sup> Station

Looking north from the station



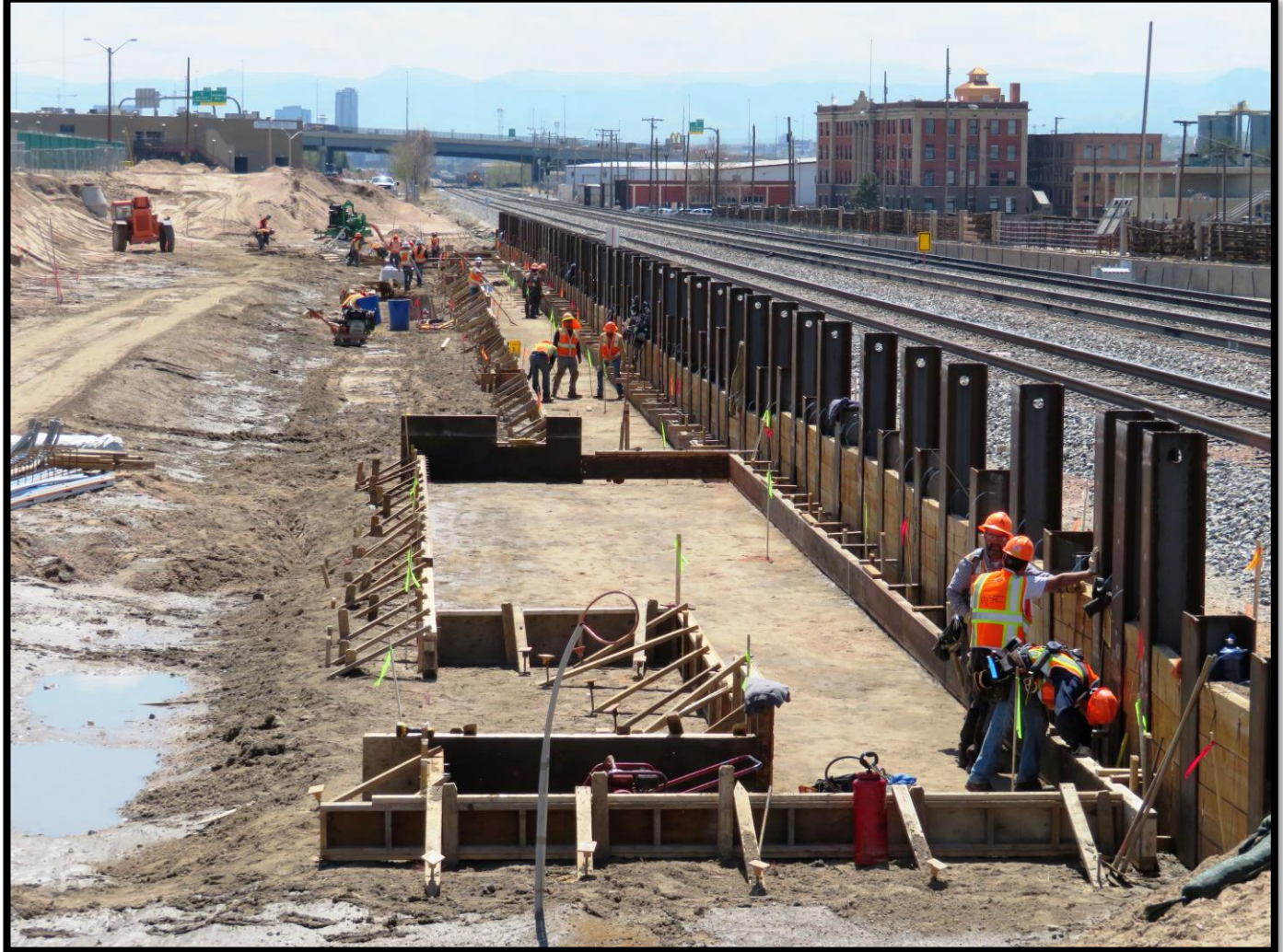


# Skyway Bridge





# 48<sup>th</sup> & Brighton-National Western Center Station





# Washington Bridge





# Denargo Bridge





# MSE Wall 154





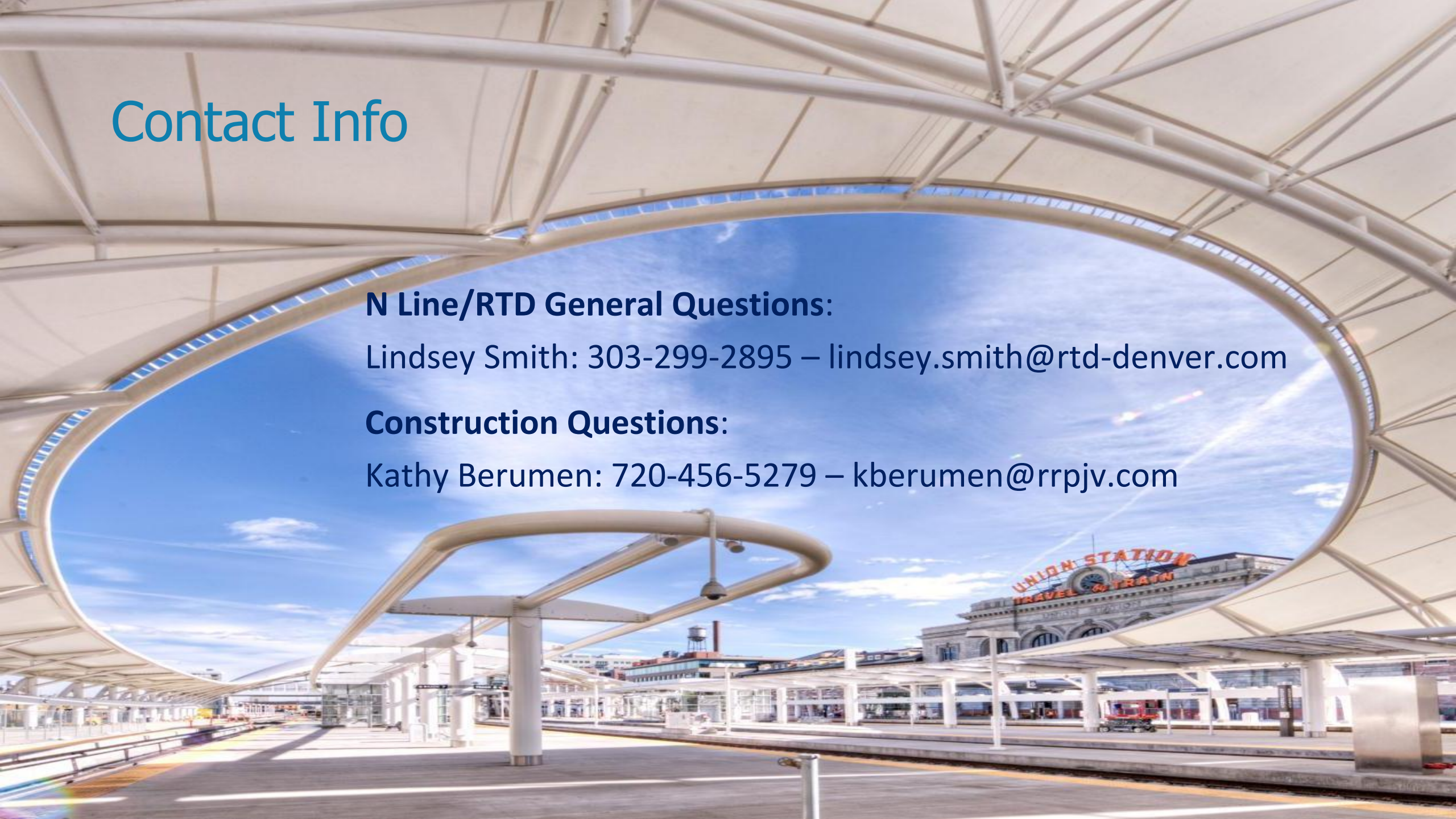
# Contact Info

## **N Line/RTD General Questions:**

Lindsey Smith: 303-299-2895 – [lindsey.smith@rtd-denver.com](mailto:lindsey.smith@rtd-denver.com)

## **Construction Questions:**

Kathy Berumen: 720-456-5279 – [kberumen@rrpjv.com](mailto:kberumen@rrpjv.com)





# Area A





# Area B





# Area D

