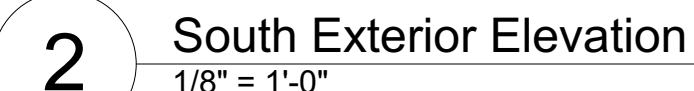
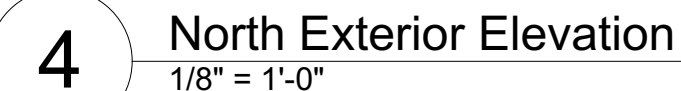
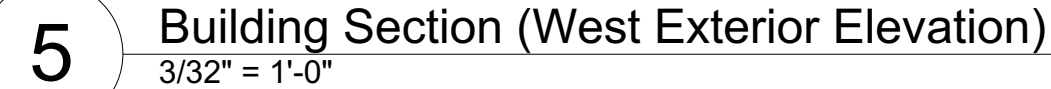


A PORTION OF THE SOUTH HALF OF THE NORTHWEST QUARTER OF THE  
SOUTHEAST QUARTER OF SECTION 7, TOWNSHIP 3, RANGE 67 WEST OF  
THE 6TH P.M., CITY OF COMMERCE CITY,  
COUNTY OF ADAMS, STATE OF COLORADO

Copyright 2016 ShelterBelt Design



- ① Sun Shading - Thermory Wood
- ② Corrugated Metal Siding - Berridge Manufacturing Company "Kynar 500 - Antique Copper-Cote"
- ③ Corrugated Metal Roofing - Berridge Manufacturing Company "preweathered galvalume"
- ④ Stucco Siding - La Habra Cementitious Stucco - Custom Color
- ⑤ Corrugated Metal Siding - Recla Metal 718" corrugated metal siding "Vintage"
- ⑥ All rooftop equipment shall be semi-removed between roof trusses
- ⑦ Mural wall
- ⑧ Curtainwall system at north facing soffit with mix of opaque metal and translucent polycarbonate panels
- ⑨ 4'-0" Deep Metal Entry Canopy
- ⑩ Main Entry Door

