



Tower Road Widening Project Update

January 23, 2017

Project Status

Project is currently on schedule & on budget
Completion – December 2017

- Construction overview
- Detours
- Safety improvements
- Tower-Pena Blvd. On Ramp Project Update



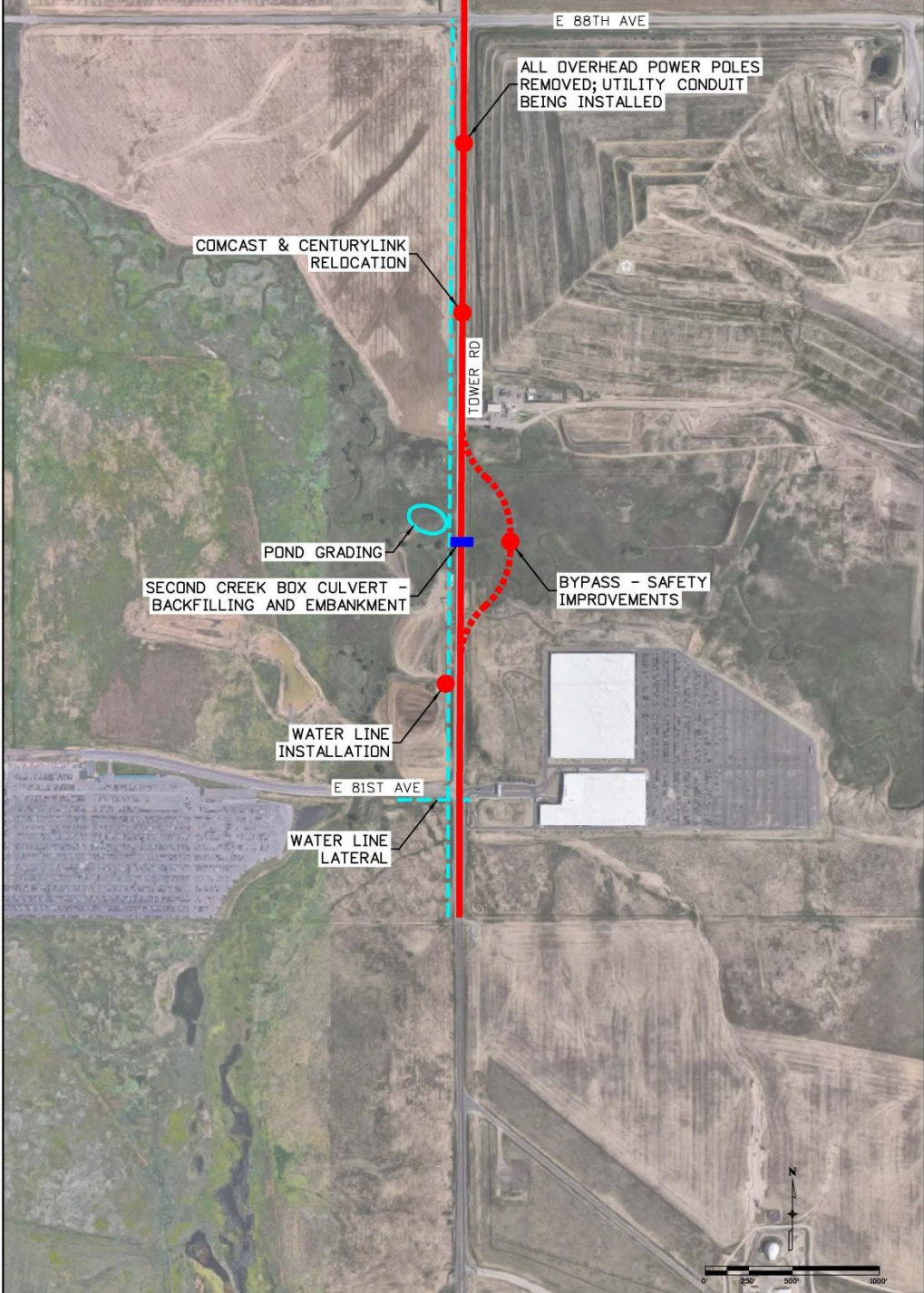


Tower Road Widening Project – Construction Segments







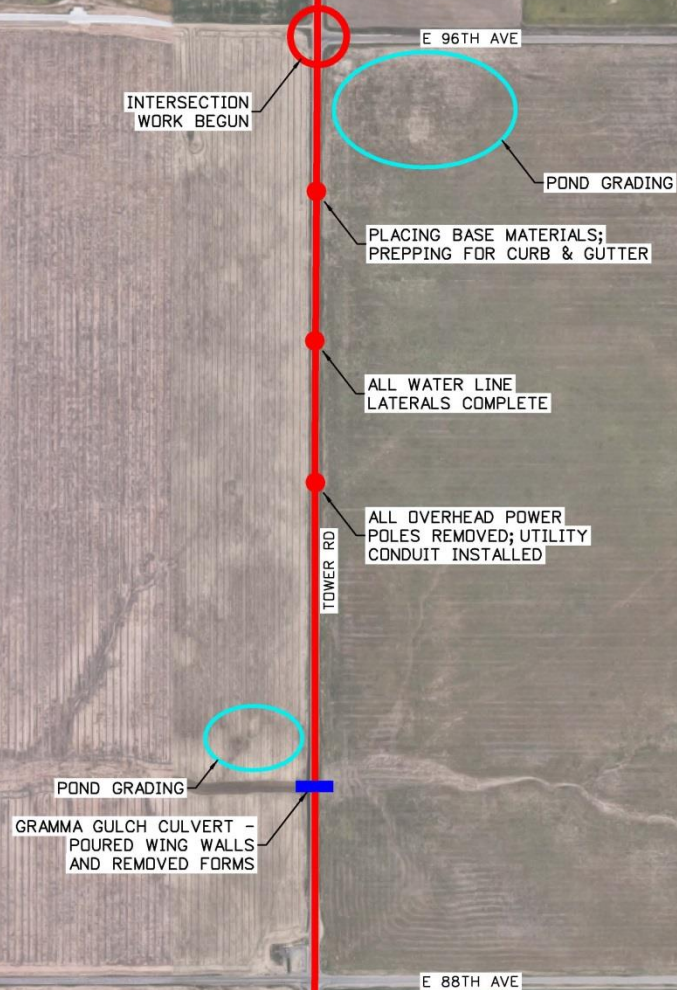


Segment 1 – 81st Ave. to 88th Ave.





Segment 2 – 88th Ave. to 96th Ave.









Segment 3 –
96th Ave. to 103rd Ave.



Segment 3

- Construction phasing called for all traffic to remain on Tower Road
- Staff evaluated the option of using E-470 as a detour for Segment 3
- Two-way traffic will be kept on Tower Road, based on the following factors:
 - No project time savings
 - E-470 has never done a detour of this magnitude
 - Experience with Segment 2 detour was high levels of frustration from drivers for out-of-direction travel
 - Would still experience traffic impacts on Chambers Road & 96th Ave.







Milestone Dates

Detour Dates

Segment 1 – Second Creek Box Detour Removal, July 2017

Segment 2 – To be reopened April 2017

Segment 3 – No detour

Final Asphalt Pavement of Top Mat

Segment 1 – November 2017

Segment 2 – April 2017

Segment 3 – July 2017



Project Status

Project is currently on schedule & on budget
Completion – December 2017





Tower Road Widening Projects

City of Commerce City
Public Works Department

Legend

Tower Road Widening - 80th Ave to 103rd Ave

Tower Road Widening - 80th Ave to Pena Blvd Eastbound Ramps
& Pena Blvd Westbound On-ramp





Questions

A decorative horizontal dotted line in a light brown color spans the width of the slide. Two solid dark brown dots are placed on the line: one is positioned approximately one-third of the way from the left, and the other is positioned approximately two-thirds of the way from the left.