



# FRONTERRA

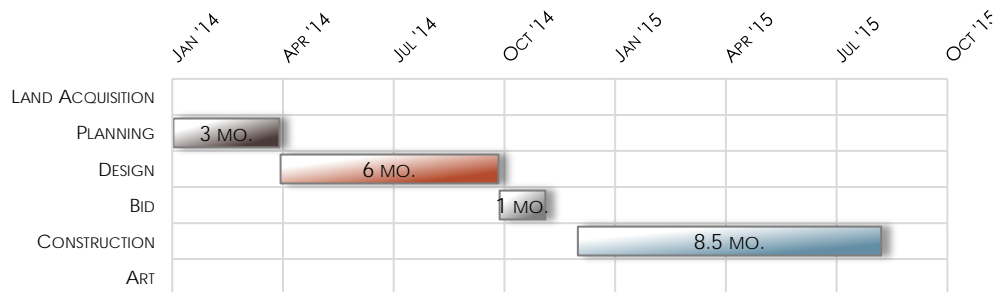
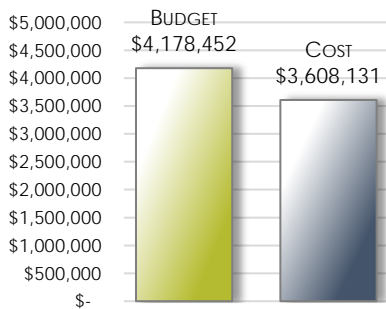
## Neighborhood Park

Project Overview



### Project Scope

Fronterra Neighborhood Park was one of five projects in Commerce City's voter-approved capital improvement program. The project scope comprised planning, design and construction of a 20-acre neighborhood park including picnic and restroom facilities, playground equipment, climbing boulders, walking/jogging trails, fitness stations, skate area, multi-use hard court, and two graded playfields. The park was designed to incorporate sustainable landscaping principles and includes low-level lighting intended to enhance safety while limiting light pollution. The park was officially opened to the public in August 2015.

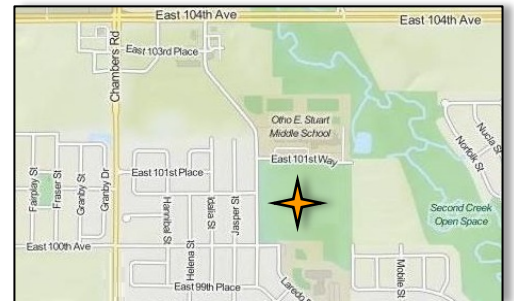


### Project Team

Project Manager: Mike Brown  
 Designer(s): DHM Design  
 Constructor(s): Golden Triangle Construction

### Project Details

Activity Type: New Construction  
 Project Type: Parks/Recreation  
 Delivery Method: Design-Bid-Build  
 Contract Method: Lump Sum



© openstreetmap.org contributors

### Project Photos

Installed playground equipment



Pre-fab restroom installation



Playground equipment installation



Completed picnic shelter



Installed playground equipment

