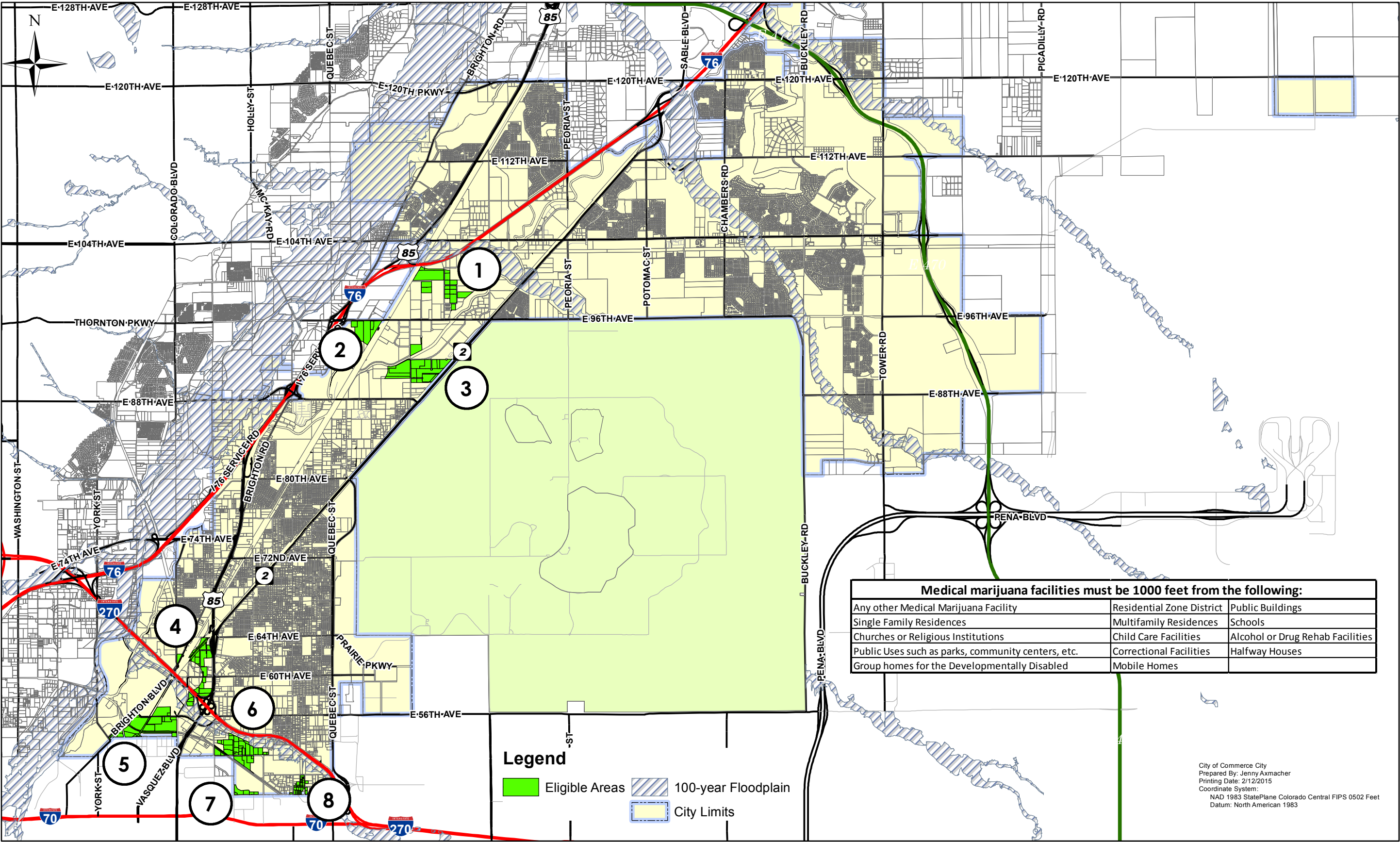


# Medical Marijuana Location Restrictions



This map is for illustrative purposes only and is based on information as of 1/15/15. Properties shown on this map as being located in an eligible area are not guaranteed to comply with the criteria listed in City's ordinances. Properties shown on this map are a best estimate only and accuracy is not guaranteed. This map is based solely on zoning and does not consider all relevant adjacent land uses which would prohibit the location of a medical marijuana facility within 1000 feet, such as day care facilities, churches, residences, etc.