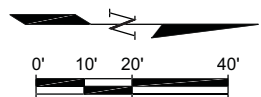
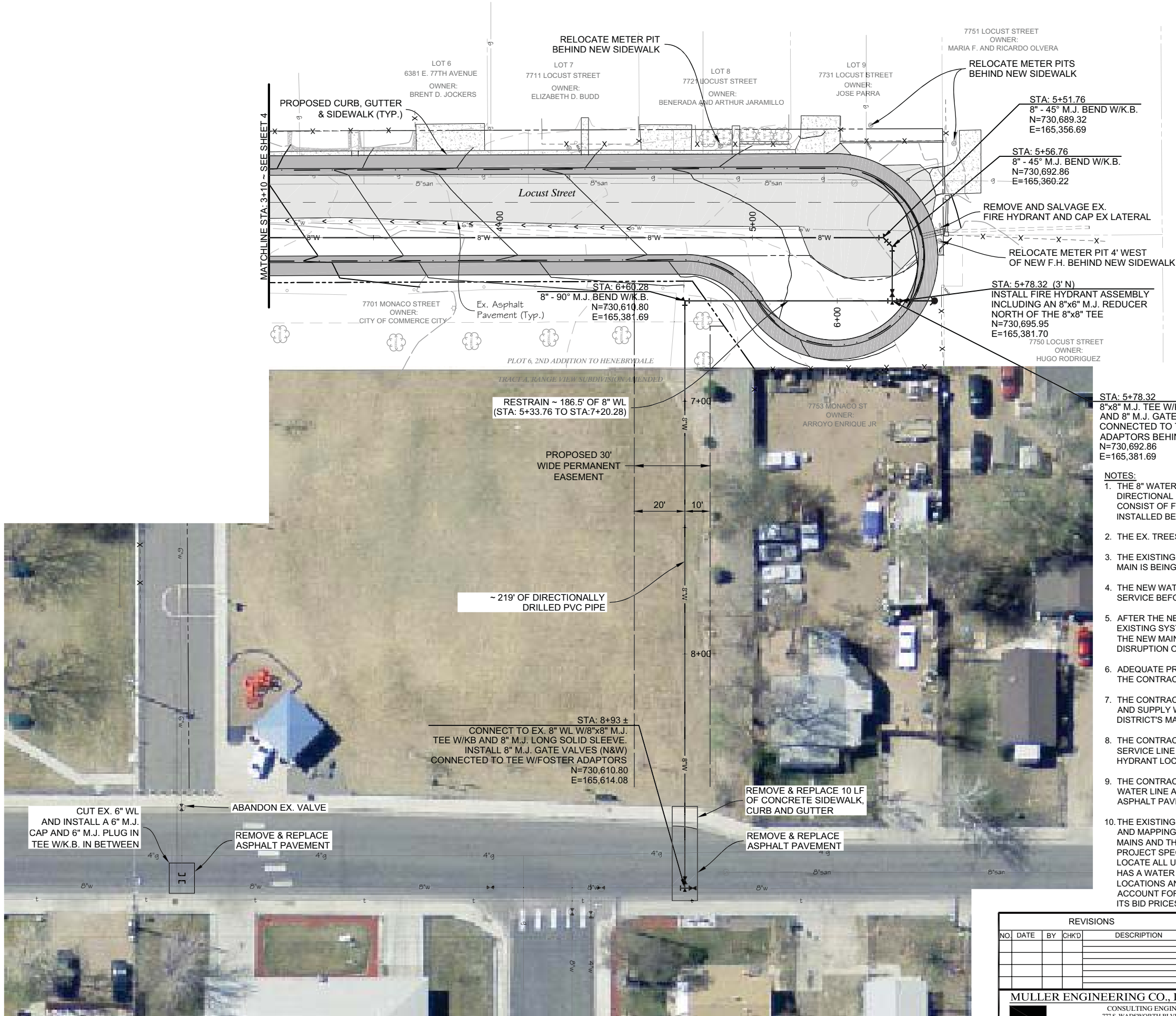


NAME: P:\14-023.01 Locust\Carol Way\77th WAS Imp's - SACS\SD\CAD\Drawings\14-023.01_Water Plan - Locust ST.dwg DATE: NOV 06, 2014 TIME: 9:45 AM



- STA: 5+51.76
8" - 45° M.J. BEND W/K.B.
N=730,689.32
E=165,356.69
- STA: 5+56.76
8" - 45° M.J. BEND W/K.B.
N=730,692.86
E=165,360.22
- REMOVE AND SALVAGE EX. FIRE HYDRANT AND CAP EX LATERAL
- RELOCATE METER PIT 4' WEST OF NEW F.H. BEHIND NEW SIDEWALK
- STA: 5+78.32 (3' N)
INSTALL FIRE HYDRANT ASSEMBLY INCLUDING AN 8"x6" M.J. REDUCER NORTH OF THE 8"x8" TEE
N=730,695.95
E=165,381.70
- 7750 LOCUST STREET
OWNER: HUGO RODRIGUEZ
- STA: 5+78.32
8"x8" M.J. TEE W/K.B. AND 8" M.J. GATE VALVES (S&W) CONNECTED TO TEE W/FOSTER ADAPTORS BEHIND NEW SIDEWALK
N=730,692.86
E=165,381.69
- NOTES:
1. THE 8" WATER LINE FROM STA:6+65.28 TO STA:8+84.00 SHALL BE INSTALLED ACROSS THE PARK USING DIRECTIONAL DRILLING METHODS TO AVOID PARK DISTURBANCE. THE NEW WATER LINE SHALL CONSIST OF FUSIBLE C900 PVC OR CERTAINTED CERTA-LOK C900 PVC (DR18) PIPE AND SHALL BE INSTALLED BETWEEN 5' AND 6' DEEP TO TOP OF PIPE.
 2. THE EX. TREES IN THE PARK SHALL BE PROTECTED.
 3. THE EXISTING WATER LINES AND SERVICE LINES SHALL REMAIN IN SERVICE WHILE THE NEW WATER MAIN IS BEING CONSTRUCTED.
 4. THE NEW WATER MAIN SHALL BE DISINFECTED, TESTED AND ACCEPTED BY THE DISTRICT FOR SERVICE BEFORE IT IS TIED INTO THE SYSTEM.
 5. AFTER THE NEW MAIN IS TESTED AND ACCEPTED, END CONNECTIONS SHALL BE MADE TO THE EXISTING SYSTEM AND THE EXISTING SERVICE LINES SHALL BE REPLACED AND TRANSFERRED TO THE NEW MAIN AS DESCRIBED IN THE SPECIFICATIONS AND SHOWN IN THE DETAILS, WITH MINIMAL DISRUPTION OF SERVICE TO THE TAP OWNERS.
 6. ADEQUATE PROVISIONS FOR NOTIFICATION OF AN INTERRUPTION OF SERVICE MUST BE GIVEN BY THE CONTRACTOR PRIOR TO THE ACTUAL ISOLATION OF THE SYSTEM.
 7. THE CONTRACTOR SHALL NOTIFY THE LOCAL FIRE DEPARTMENT PRIOR TO TAKING FIRE HYDRANTS AND SUPPLY WATER OUT OF SERVICE, AND SHALL DELIVER ALL REMOVED HYDRANTS TO THE DISTRICT'S MAINTENANCE SHOP.
 8. THE CONTRACTOR SHALL BE RESPONSIBLE FOR STAKING THE BACK OF WALK LIMITS PRIOR TO THE SERVICE LINE AND FIRE HYDRANT WORK TO DETERMINE IF EX. METER PIT AND PROPOSED FIRE HYDRANT LOCATIONS NEED TO BE SHIFTED AND/OR GRADE ADJUSTMENTS MADE.
 9. THE CONTRACTOR SHALL BE RESPONSIBLE FOR THE REMOVAL OF EX. ASPHALT ALONG THE NEW WATER LINE ALIGNMENT AND MAINTAINING THE ROADWAY OVER THE TRENCH CUTS PRIOR TO FINAL ASPHALT PAVING.
 10. THE EXISTING UTILITIES HAVE BEEN SHOWN BASED OFF INFORMATION OBTAINED FROM LOCATES AND MAPPING. THE SANITARY SEWER SERVICES WERE IDENTIFIED BY VIDEO TAPING THE SEWER MAINS AND THEY HAVE BEEN SHOWN FROM THIS INFORMATION WHICH IS ALSO INCLUDED IN THE PROJECT SPECIFICATIONS. THE CONTRACTOR SHALL BE RESPONSIBLE FOR NOTIFYING UNCC TO LOCATE ALL UTILITIES AND SHALL VERIFY THEIR LOCATIONS PRIOR TO CONSTRUCTION. EACH LOT HAS A WATER SERVICE STEMMING FROM THE EXISTING WATER MAINS AND THE METER PIT LOCATIONS AND SERVICES HAVE BEEN IDENTIFIED ON THE PLANS. THE CONTRACTOR SHALL ACCOUNT FOR ALL CROSSINGS OF UTILITIES SHOWN ON THE PLANS AND/OR DESCRIBED HEREIN, IN ITS BID PRICES.

REVISIONS				
NO	DATE	BY	CHKD	DESCRIPTION
MULLER ENGINEERING CO., INC.				
CONSULTING ENGINEERS				
777 S. WADSWORTH BLVD. 4-100				
LAKEWOOD, COLORADO 80226				
(303) 988-4939				

CAROL WAY, EAST 77TH AVENUE AND LOCUST STREET WATER AND SANITARY SEWER IMPROVEMENTS			
LOCUST STREET - WATER LINE PLAN			
DESIGNED	SAH	DATE	09/09/2014
DRAWN	LLD	FILE	WATER P & P
CHECKED	SAH	PROJ. NO.	14-023.01
SCALE		SHEET	5 OF 12