



Belle Creek Boulevard Traffic

June 21, 2012

Presentation Overview

Overview

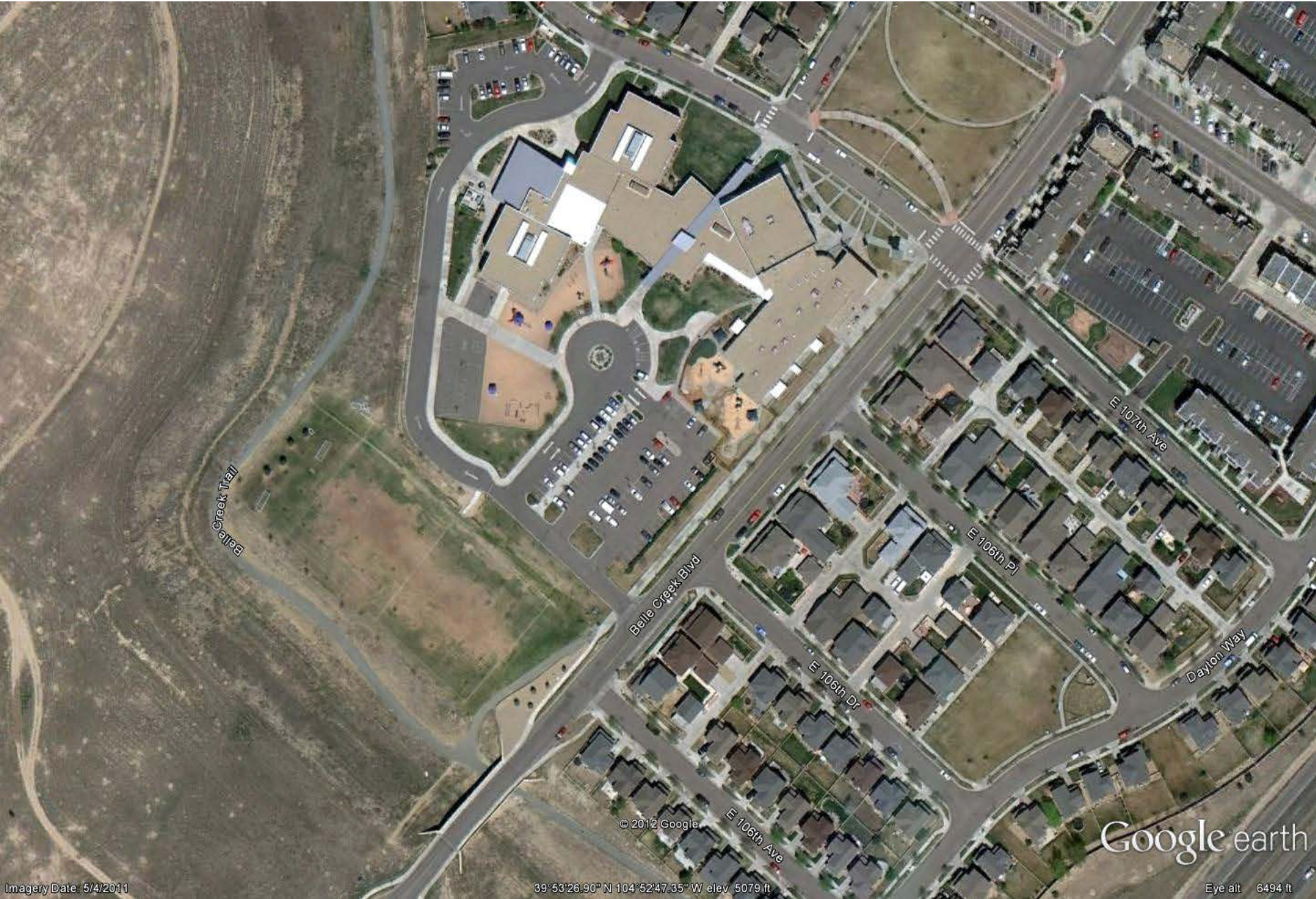
Speed Study Analysis

Police Enforcement

Recommendation

Feedback

Overview



Overview

Belle Creek Boulevard Characteristics:

- Classified as a Minor Collector
- Posted Speed Limit of 25 MPH
 - 20 MPH During School Hours

Unusual Characteristics:

- Belle Creek Charter School, Recreation Center, Pre-School on west side
- Residential fronting on east side

Above characteristics make Belle Creek Boulevard a Special Situation that does not fall simply into the City's Traffic Calming Policy

Minor Collector Comparison

	Typical	Belle Creek Boulevard	Monaco Street
Classification	Minor Collector	Minor Collector	Minor Collector
Speed Limit	30 MPH	25 MPH	30 MPH
Design Capacity	8000 ADT	3834 ADT	6100 ADT
% Capacity	N/A	48%	77%

Speed Study Results

Conducted Monday, February 13, 2012- Thursday, February 16, 2012

Speed Range	Northbound	Southbound	% Total
			Motorists
0-24 MPH	1,952	1,754	40.4
25-29 MPH	1,965	914	31.4
30-34 MPH	1,777	208	21.6
35-39 MPH	519	29	6.0
40-44 MPH	51	1	0.6
45&UP MPH	5	0	0.1
Total Vehicles	6,269	2,906	100

85th Percentile Speed* = 31 MPH

*85% of vehicles travel at or below this speed

Average Daily Traffic (ADT) = 3834

Police Enforcement Results

- Continue to conduct directed enforcement
- Conducted over 15 hours of enforcement in two week period in March
 - 10 Warnings Speeding
 - 5 Summons Speeding
 - 4 Summons Stop Signs
- Results
 - Speeding Summons : 1 Summons every 3 hours
 - Stop Sign Summons: 1 Summons every 3 hours/45 minutes
 - Total Summons: 1 Summons every 1 hour/40 minutes
- In 2012
 - 7 Traffic Complaints
 - 41 Officer Initiated Activities
 - 67 Traffic Contacts

Options Analyzed

Impacts						
Options Reviewed	Parking	School	Effectiveness	Snow Removal	Pedestrian Safety	Cost
Do nothing	None	None	N/A	None	None	\$0
Flashing becon	None	None	Minimal	None	Low	\$500- \$2000
Stripe median	High	High	Questionable	None	Low	\$1,000
Construct median	High	High	Medium	Medium	Low	\$20,000
Speed table	Medium	Medium	Medium	Medium	Low	\$3,000
Rumble strips	None	None	Low	Low	Low	\$500
Pedestrian crossing (each)	Medium	Medium	Low	None	Decrease	\$5,000
Pedestrian crossing w/ bump outs	High	Medium	Low	Low	Low	\$45,000
Pedestrian crossing w/ median	High	High	Medium	Medium	Low	\$34,000
Traffic circles (each)	High	High	High	High	Decrease	\$10,000
Diverters (2 each)	None	Medium	Extreme	High	Low	\$50,000
Stop Signs	Medium	Medium	Questionable	Low	Decrease	\$500

Multi-way Stop Signs

Criteria for stop signs:

- Traffic Volumes: Equal volumes from both the main street and side street
- Pedestrian Volume – Substantial and sustained pedestrian uses over an 8 hour period.
- Crash History – 5 or more vehicular accidents per year that are correctable by a multi-way stop.
- Sight Distance – Turning vehicles vision of vehicles is obstructed.

Multi-way Stop Signs

How Belle Creek Blvd measure up to the criteria:

- Traffic Volumes: Belle Creek traffic is substantially greater than any of the side streets.
- Pedestrian Volume – While there are peak times of a handful of pedestrian crossings, there is not substantial crossings consistently over an 8 hour period.
- Crash History – There has been one accident in this stretch of road over the last year.
- Sight Distance – Turning vehicles vision is not impaired by obstructions.

Multi-way Stop Signs

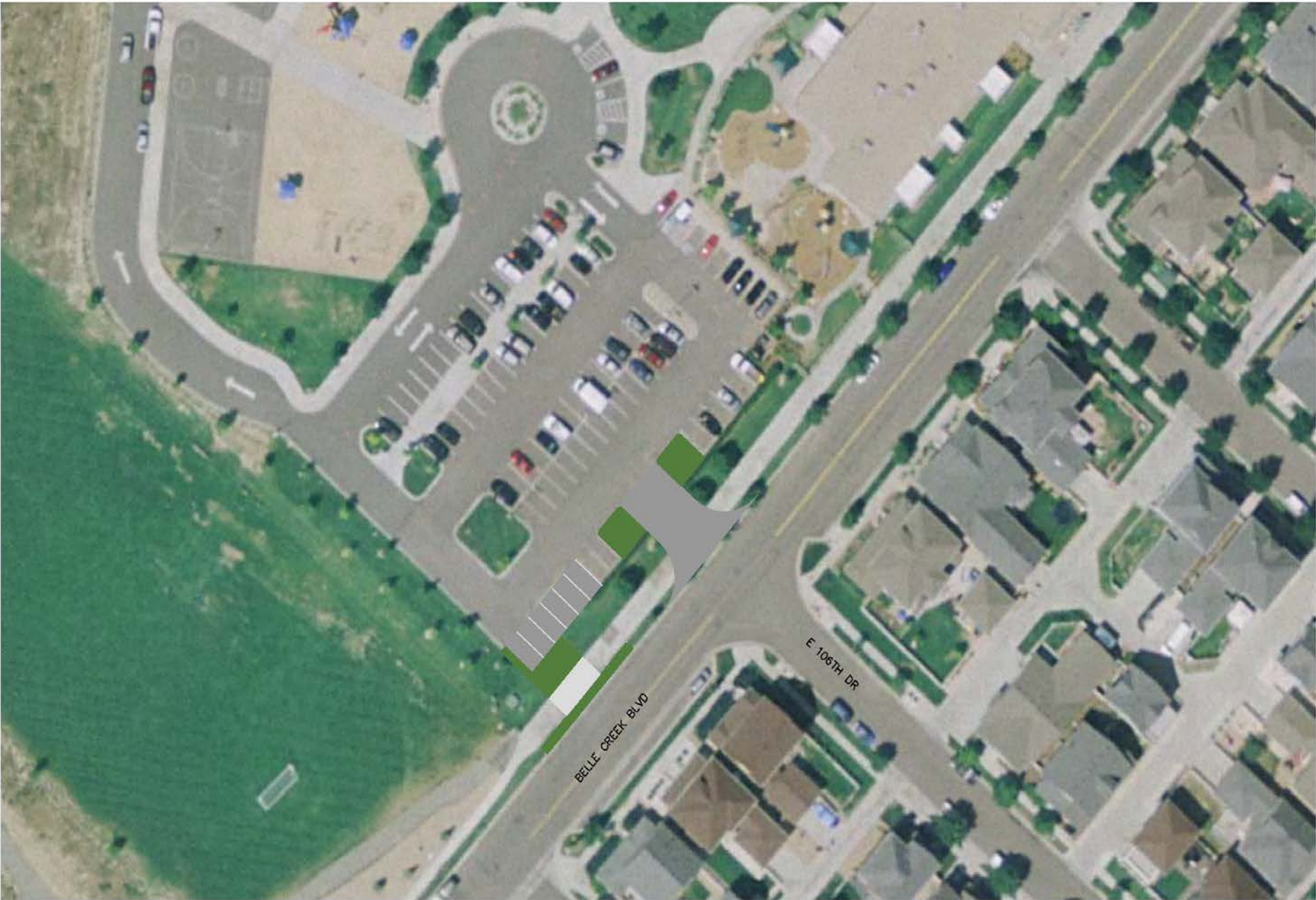
Reasons why Stop Signs are not recommended:

- Unwarranted stops signs increased speeding away from intersections because motorists try to regain lost time spent at “unnecessary” stop signs.
- Overall safety decreases as pedestrians and vehicles on minor streets expect vehicles to always stop, but many drivers run the “unnecessary” signs.
- No good location
 - School Access vs. East 106th Drive

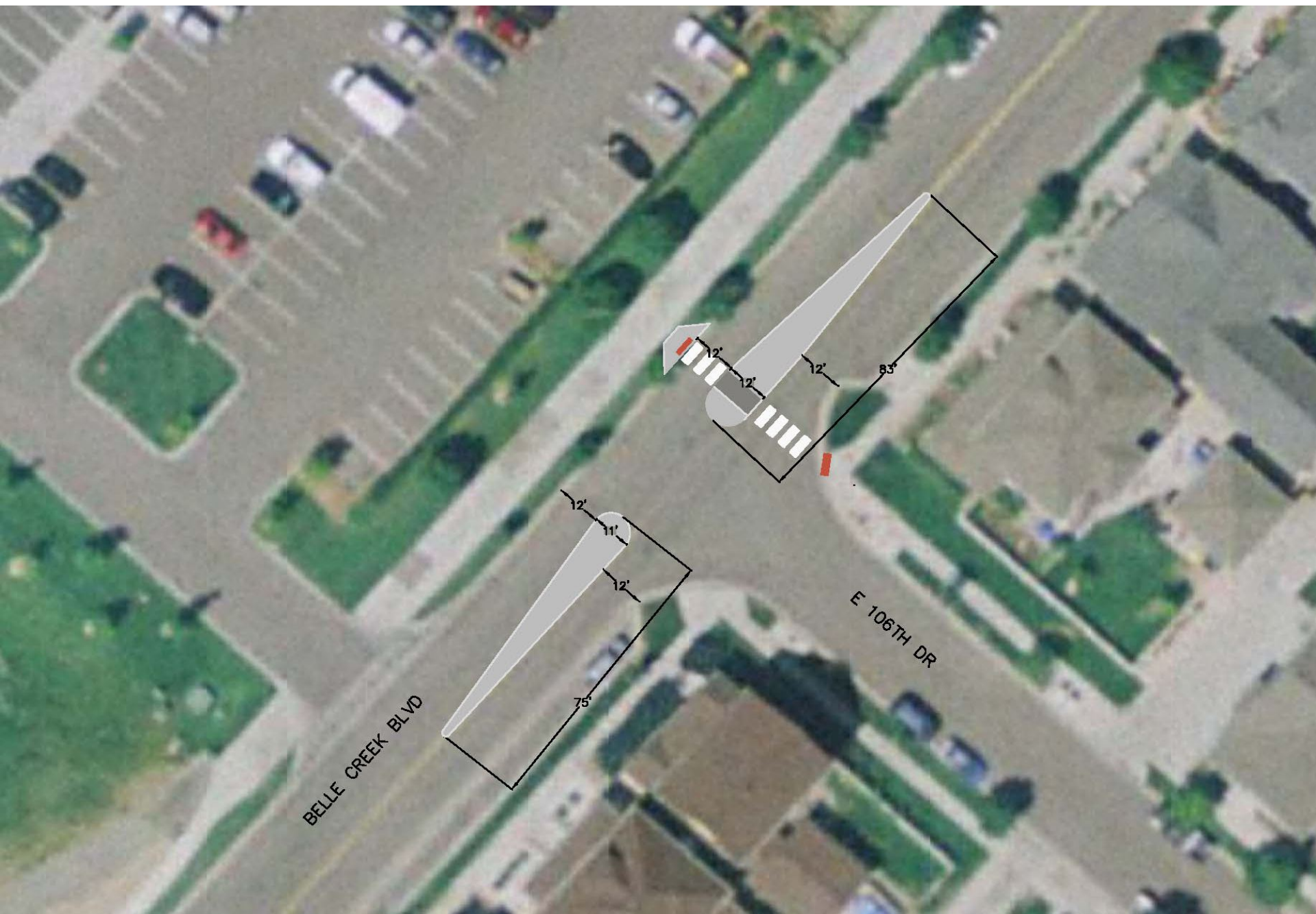
Possible Option – Stop Signs



Possible Option – Relocate School Entrance



Recommended Raised Median Pedestrian Crossing



Feedback

