



# Highway 2 Widening Project - Project Design Elements

---

July 20, 2015

# Project Goals



- Increased vehicle capacity & improved level of service
- Improved safety
- Reduced flooding and improved water quality
- Environmental & contextual sensitivity
- Multi-modal, *i.e.*, accommodate pedestrians, bicyclists and vehicles

# Project Elements



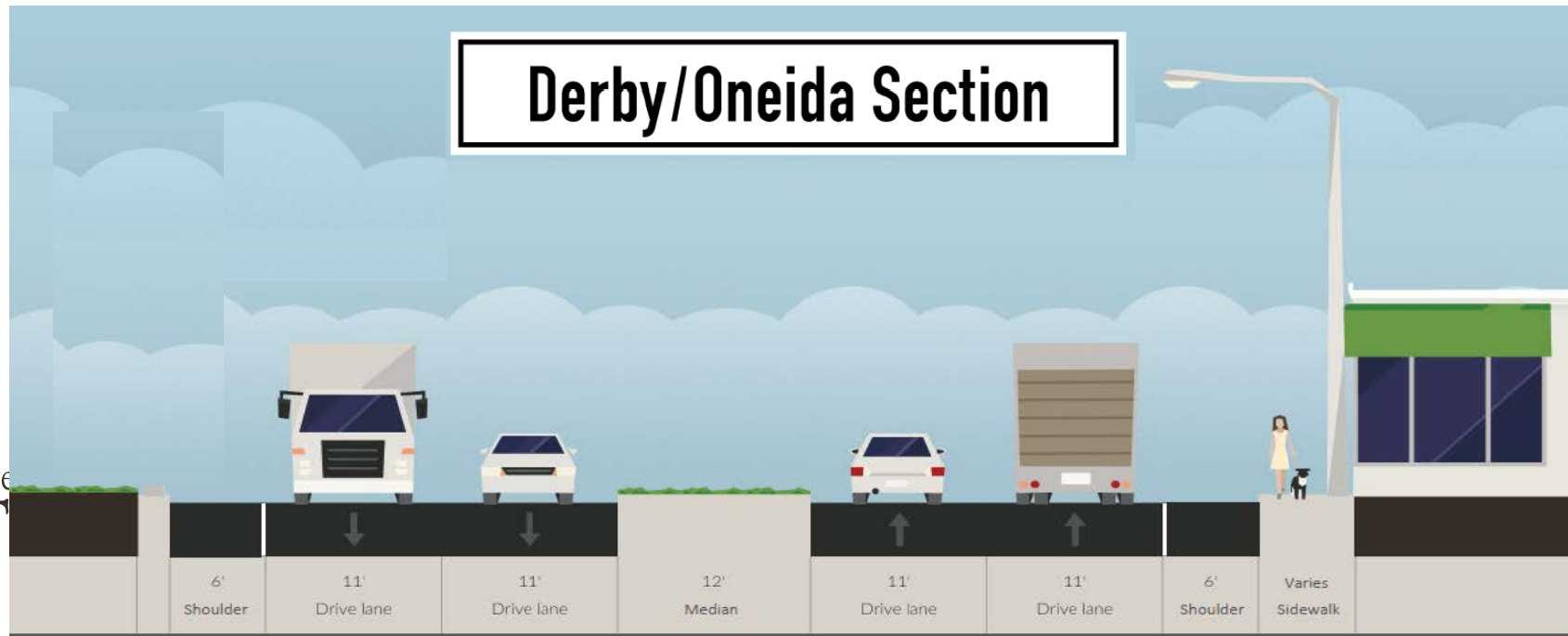
- Widen from two to four lanes with turn lanes as needed
- Install street lighting; likely LED type
- New Culvert at First Creek crossing
- Raised/Painted median
  - Derby/Oneida
- Public Art
  - Derby/Oneida
  - Refuge
- Under-ground overhead electric line
- 10-foot wide bike path



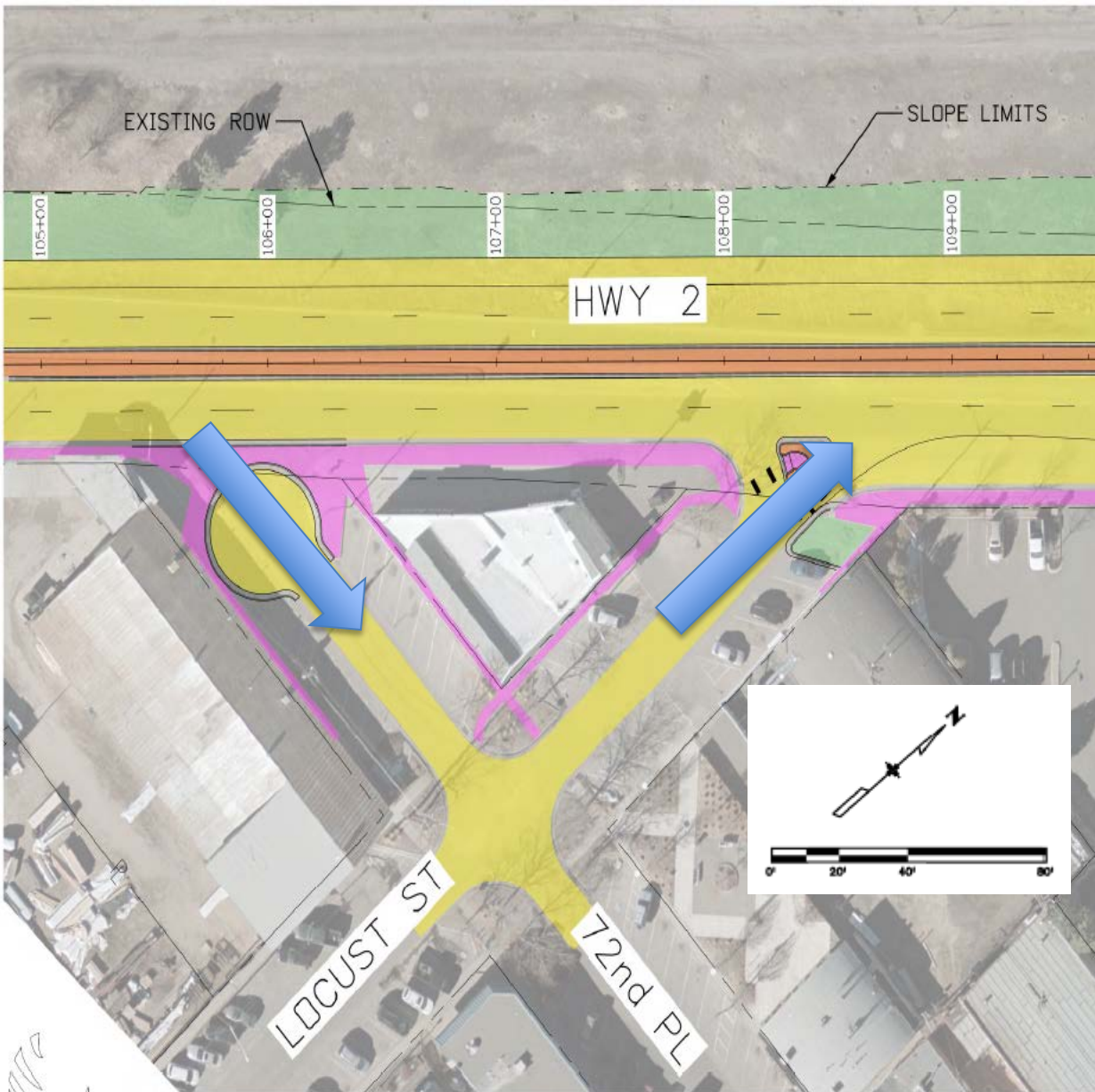
# Derby/Oneida Section (with Cycle Track)



# Derby/Oneida Section



# Design – Access Modification

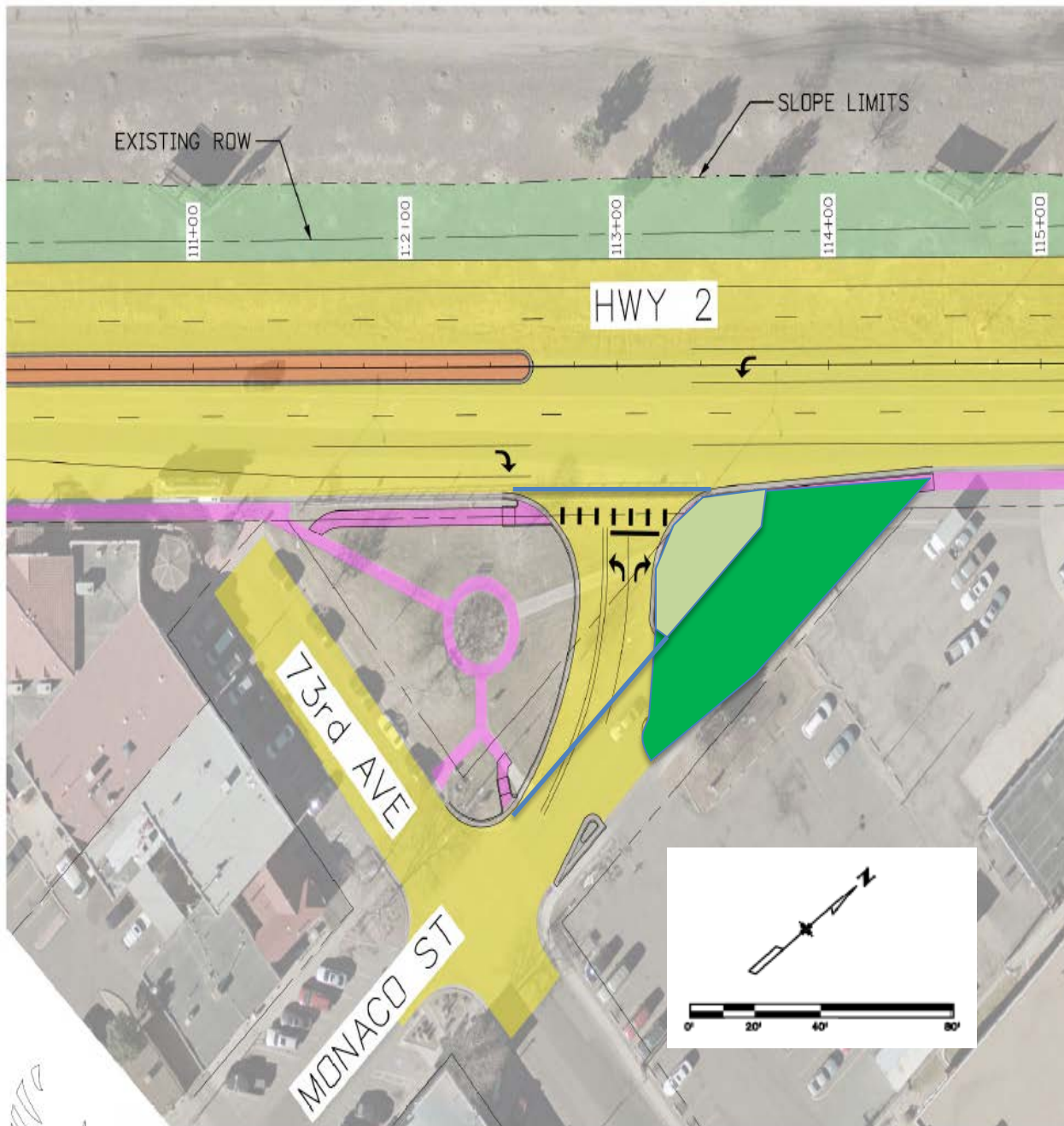


## Locust St. & 72<sup>nd</sup> Pl.

- Raised Median
- Low Vehicle Volume
- Safer Pedestrian Corridor



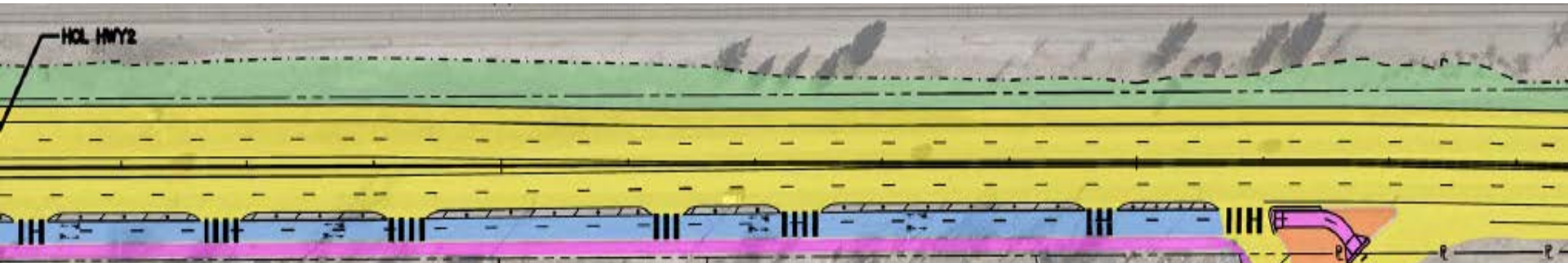
# Design – Access Modification



## Monaco Street

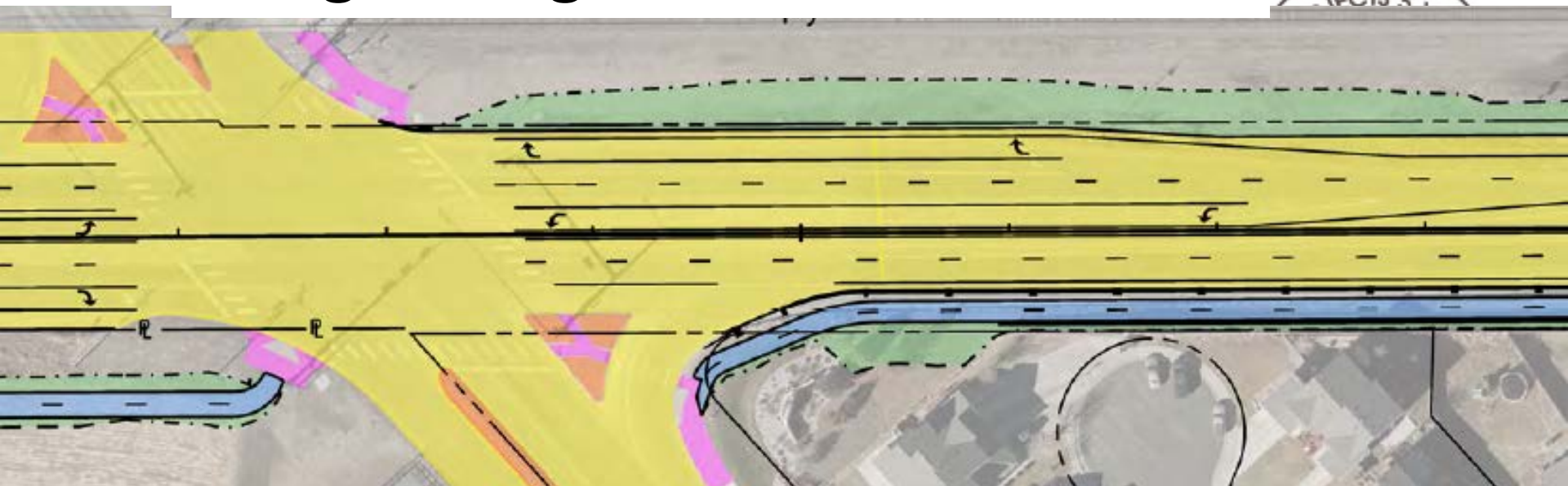
- Realignment
- Raised Median
- Safer Pedestrian Corridor
- Pervious / Impervious Impact

# Design – Multi-modal Transportation





# Design – Eagle Creek





# Lighting



- Staff recommends evaluating environmentally-sensitive options such as LED lighting.
  - Three Types:
    - Non-LED
    - Xcel-LED
    - United Power LED
- Preliminary Analysis shows significant reduction in cost for LED lighting.

# Utilities



- All Xcel OH poles from 88<sup>th</sup> Ave to 96<sup>th</sup> Ave will be removed and placed underground.
- Xcel OH Poles from 74<sup>th</sup> Ave to Quebec Street will almost all be removed.
  - There are service laterals that connect residents directly.
    - 5-7 poles will remain.
- Continued Coordination with Utility Comp.

# Project Schedule



Key Activity	2014	2015				2016				2017			
	Q4	Q1	Q2	Q3	Q4	Q1	Q2	Q3	Q4	Q1	Q2	Q3	Q4
Execute Design Contract													
Design													
Right-of-Way Acquisition													
Bidding													
Construction													
Communications & Outreach													

# Questions & Discussion

---

