



**COLORADO**  
Department of  
Transportation



# US 85 Planning and Environmental Linkages Study



**COLORADO**

Department of  
Transportation

# Presentation to Commerce City Council

*July 20, 2015*



# Agenda

---



- Overview of PEL
- Access Control Plan (ACP) 1999 recommendations
- Project Update
  - Recent Executive Committee (EC) and Technical Advisory Committee (TAC) meetings
  - Upcoming meetings
  - Review of schedule
- Brainstorming phase for each intersection



# Commerce City Overview

---



- US 85 classification: freeway
- Interchanges
  - 104<sup>th</sup> Avenue, full-movement interchange
  - Longs Peak Drive, closure
  - 112<sup>th</sup> Avenue, full-movement interchange
  - 120<sup>th</sup> Avenue, full-movement interchange
  - 124<sup>th</sup> Avenue, closure

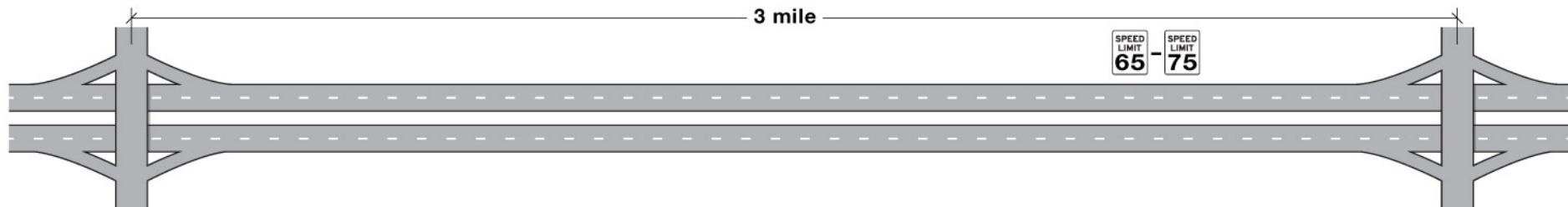


# Freeway Context



## Freeway

- Higher speeds and high traffic volumes
- No direct accesses
- Grade separated crossings only
- Grade separated pedestrian/bike crossings, transit stops tied into on and off-ramps, managed lanes
- Highest mobility improvements
- More physical impacts

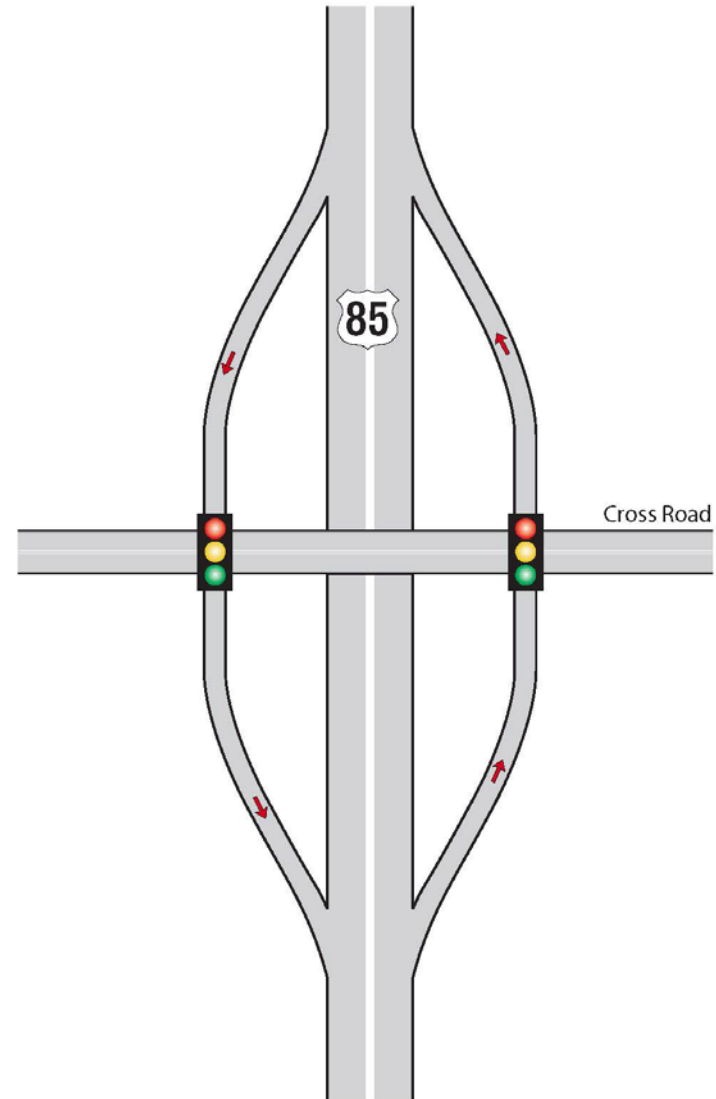




# Interchange options



- **Diamond**
  - Largest footprint possible
  - Footprint would need to be reduced in some locations
- Existing example
  - I-76 and 88<sup>th</sup> Avenue

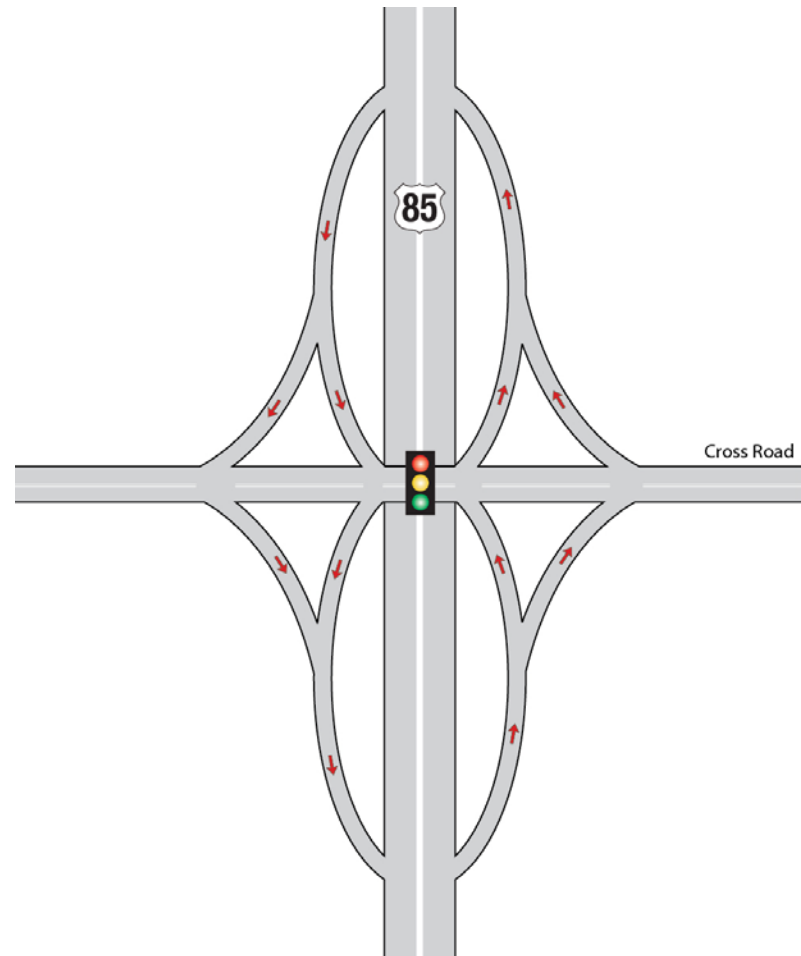




# Interchange options



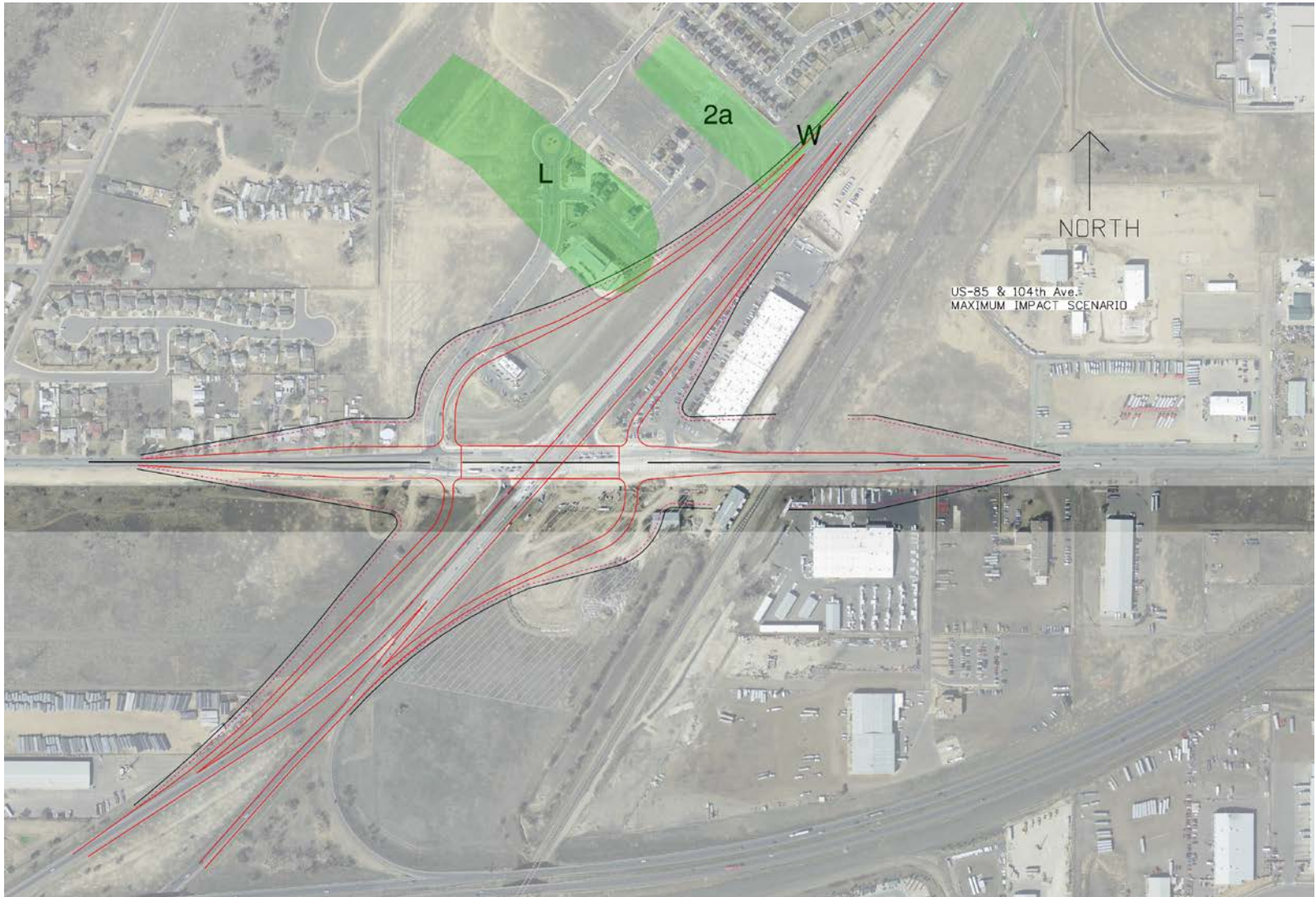
- Single point urban interchange (SPUI)
  - Reduced footprint
  - One intersection instead of two
- Existing example
  - University Boulevard and I-25 (near Denver University)







# 104th Avenue, Diamond Option

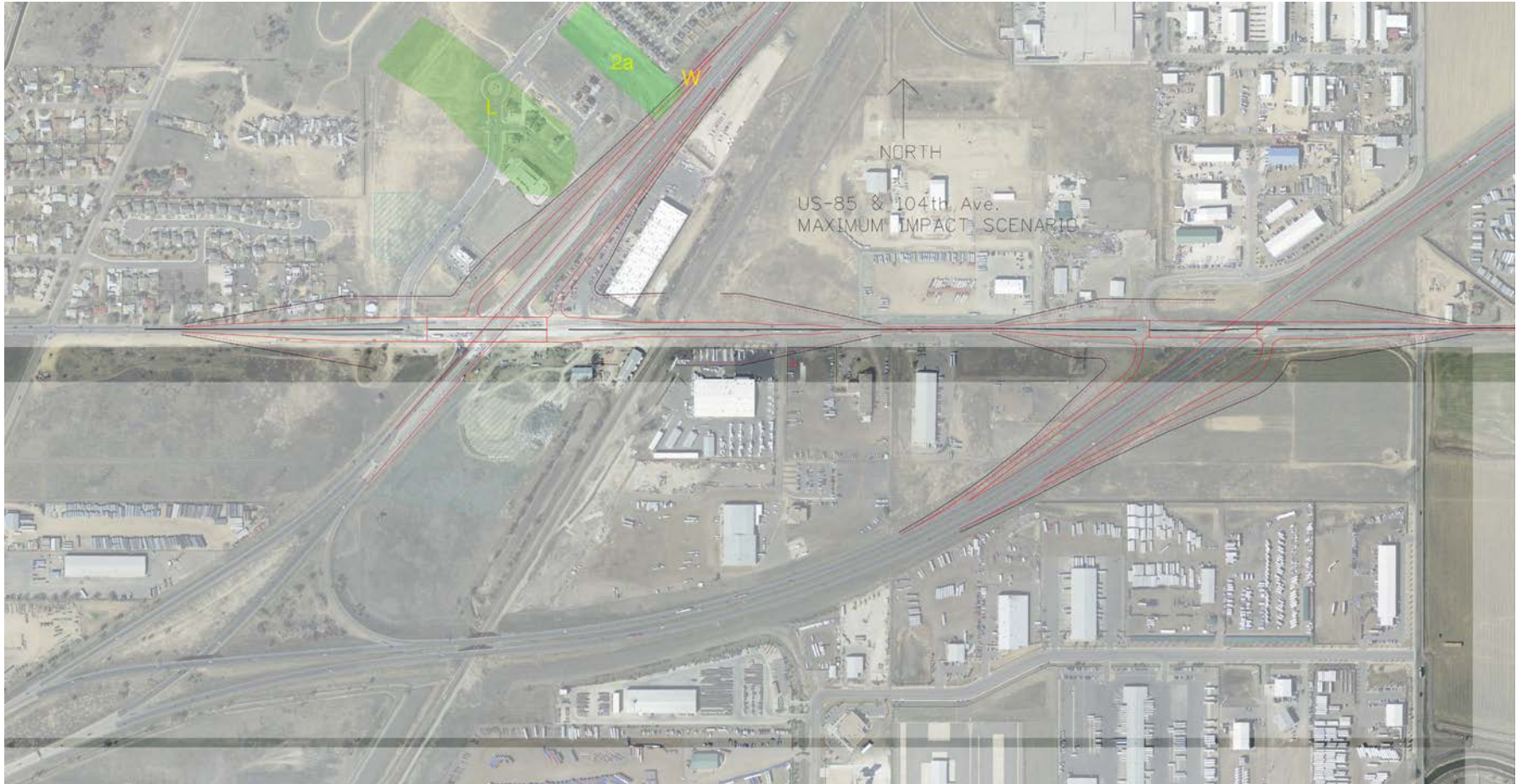






# 104th Avenue, Two Half Diamond Option

---

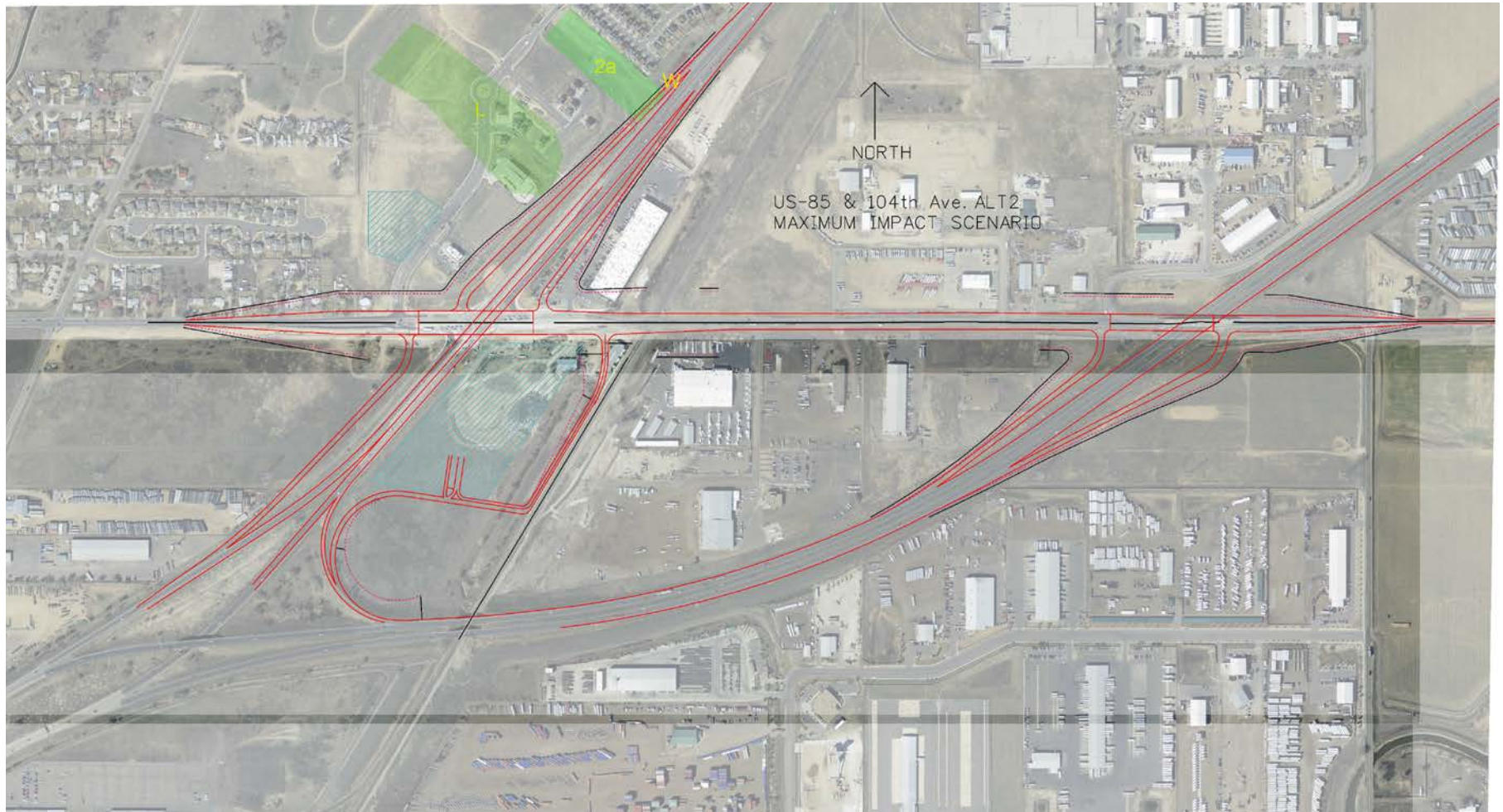






# 104th Avenue, Alternative 2

---

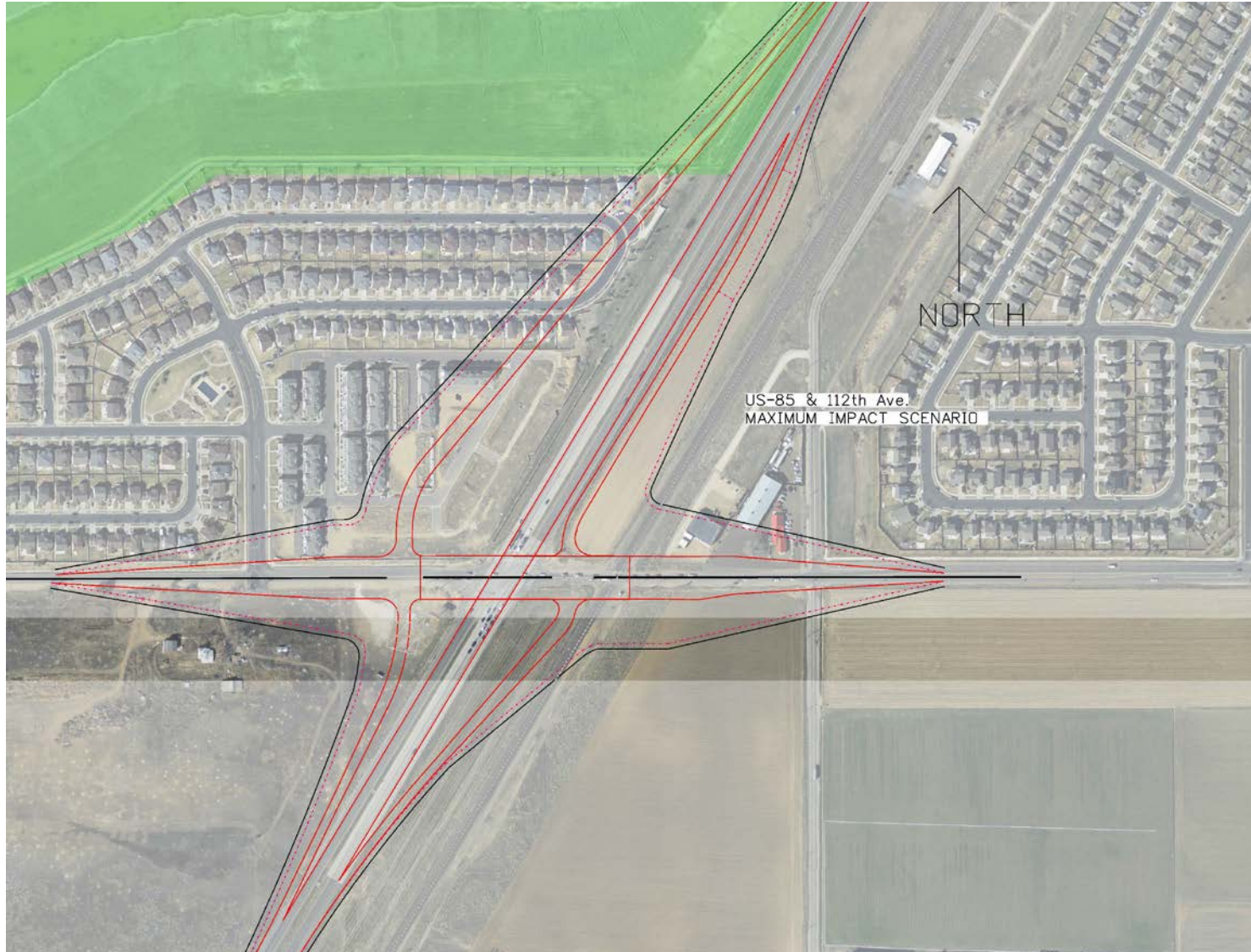






# 112th Avenue Diamond Option

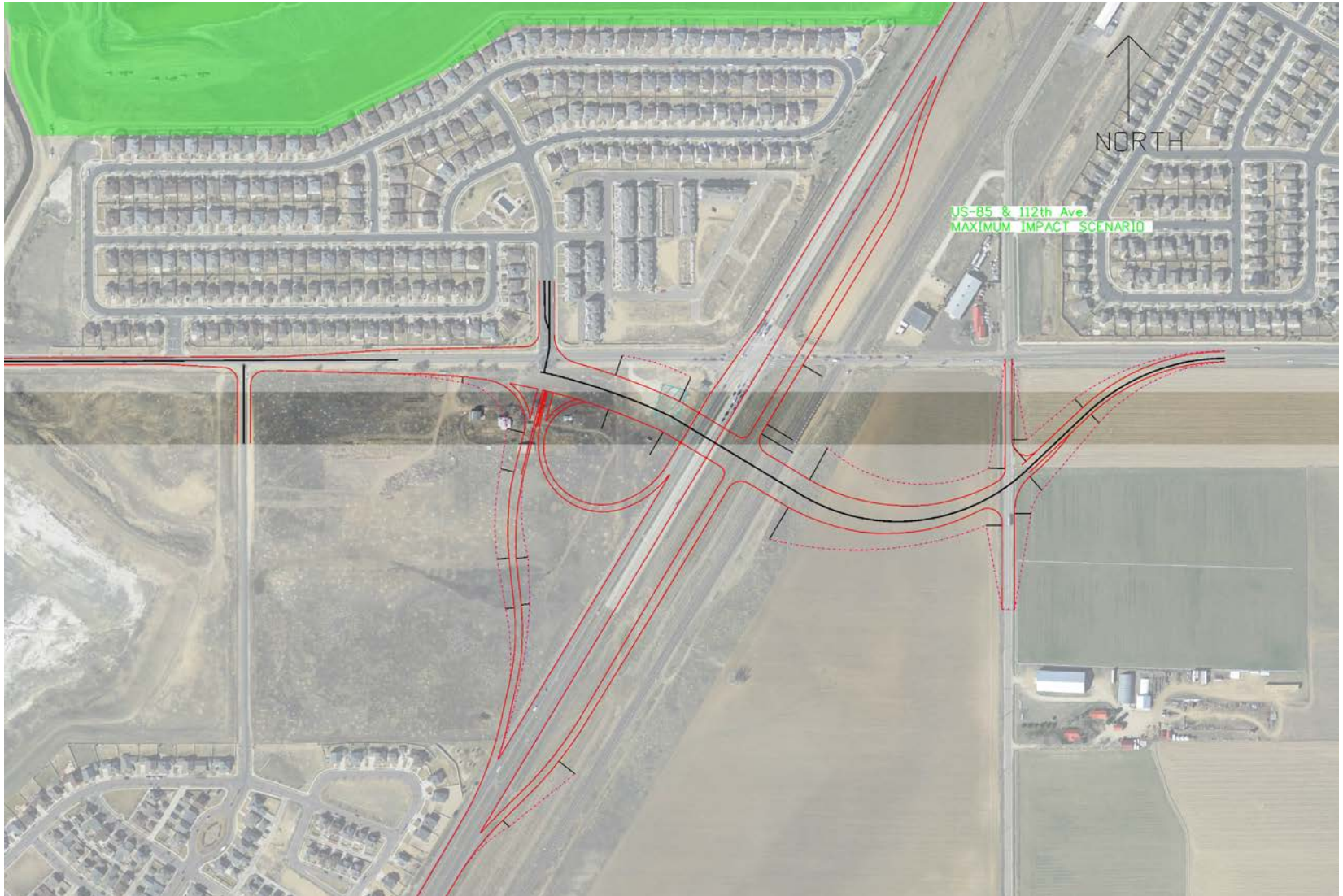
---





# 112th Avenue Skewed Loop Option

---





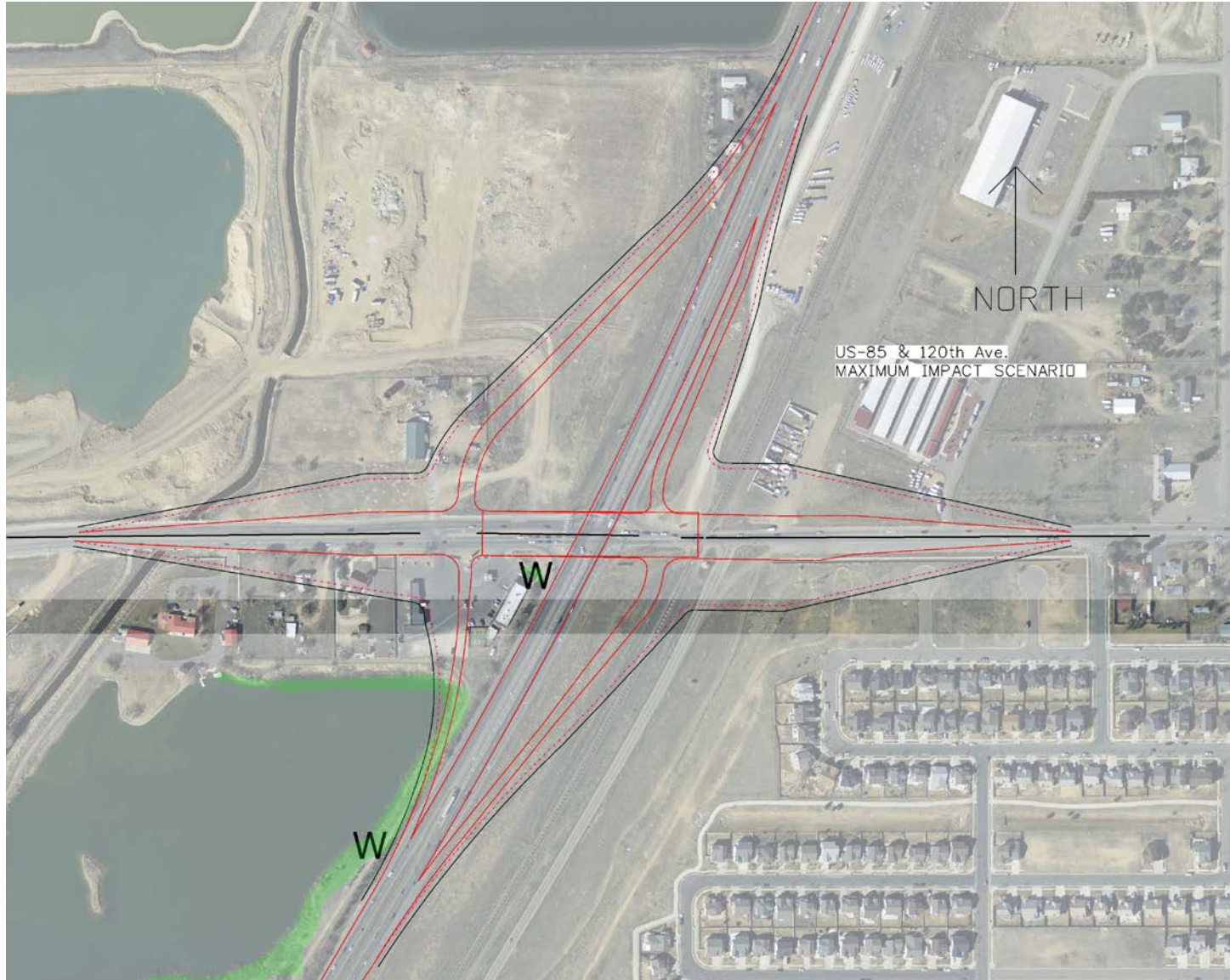


# 112th Avenue SPUI Option





# 120th Avenue Diamond Option

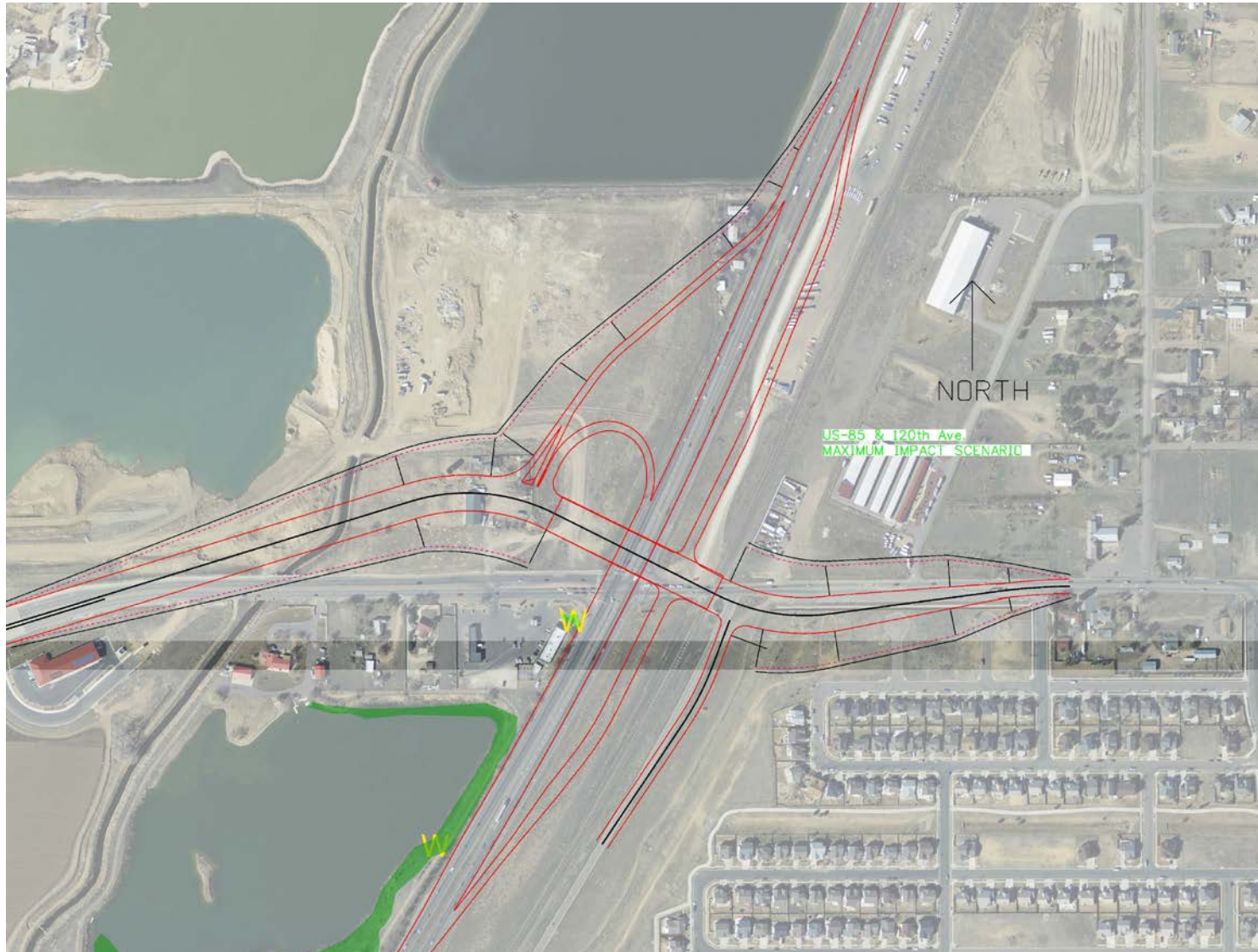






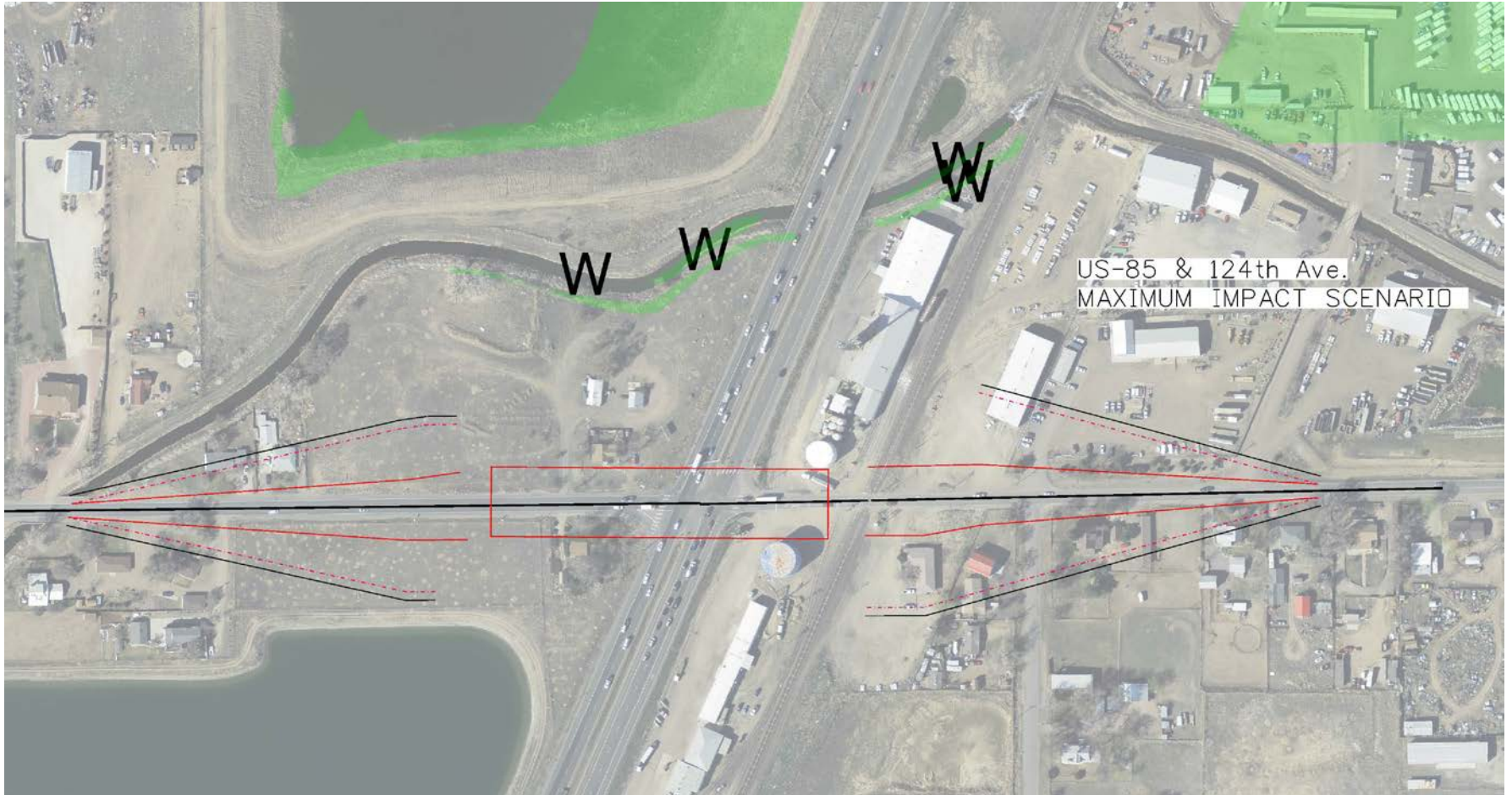
# 120th Avenue Option

---





# 124th Avenue Option





## Next Steps

---



- Continue to review this information and provide feedback to project team
- Continue one-on-one meetings
- Coordination with TAC
- Develop cost estimates
- Establish priorities
- Public meetings (after next EC)





# COLORADO

Department of  
Transportation



**Thanks!**