

## Alignment Sheet 17

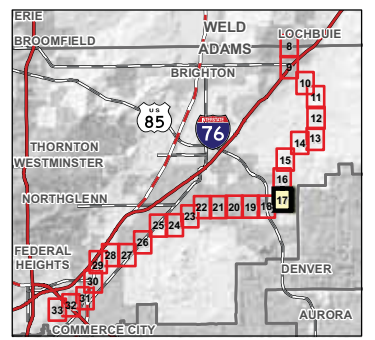
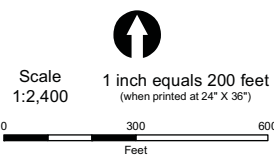
- Valve Set
  - Proposed Pipeline Route
  - Alternative Pipeline Route
  - Fort Lupton Facilities Site
  - Staging Area
  - Temporary Use Area
  - Permanent ROW
  - Construction ROW
- Boundaries**
- County
  - Municipal

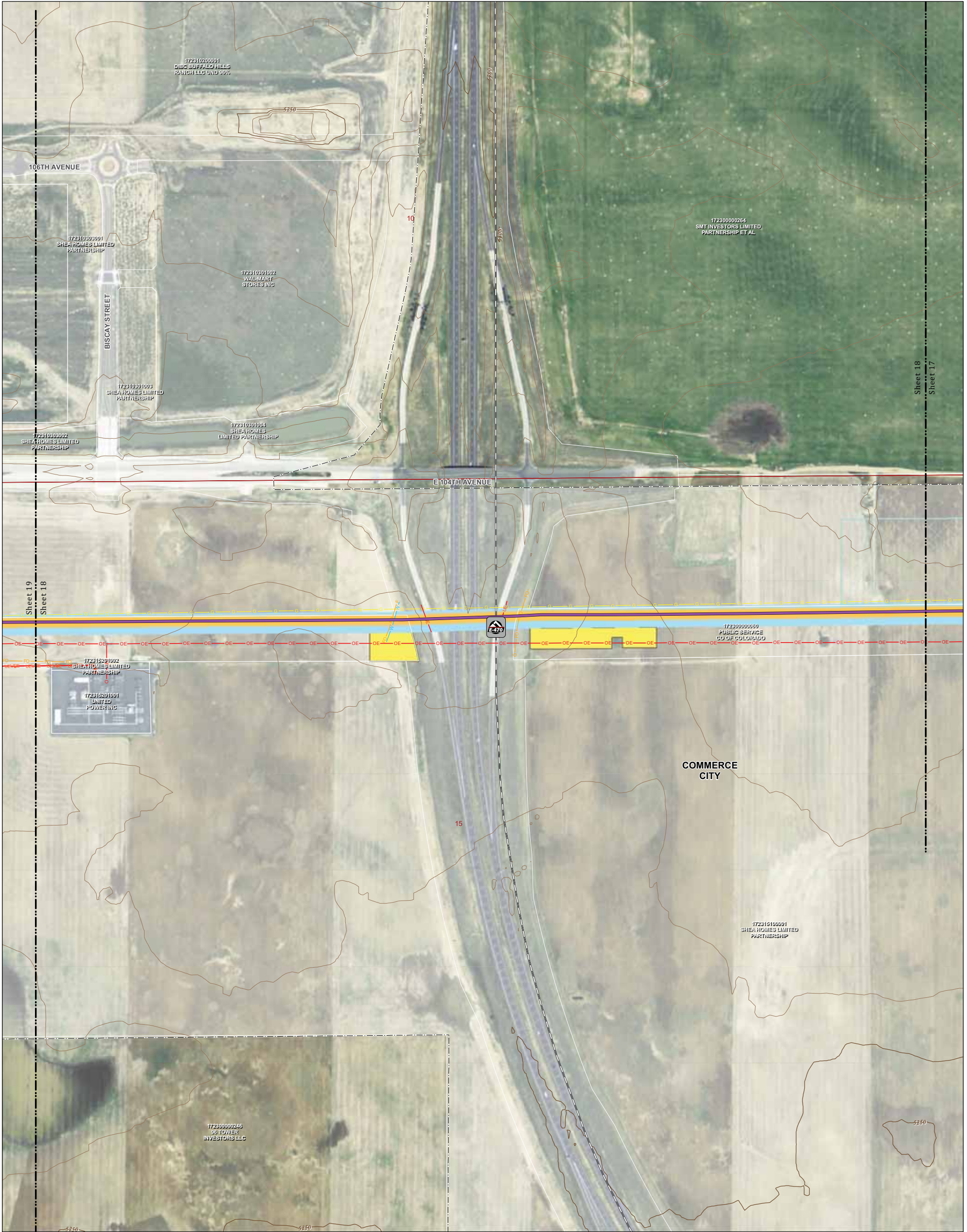
### Hydrology

- Perennial Stream
- Intermittent Stream
- Canal/Ditch

### Existing Utilities

- Cable TV Fiber
- Overhead Electric
- Underground Electric
- Gas
- Petroleum
- Storm Sewer
- Telephone Fiber
- Telephone
- Water





# CHEROKEE NATURAL GAS PIPELINE PROJECT

## Alignment Sheet 18

- Valve Set
- Proposed Pipeline Route
- Alternative Pipeline Route
- Fort Lupton Facilities Site
- Staging Area
- Temporary Use Area
- Permanent ROW
- Construction ROW

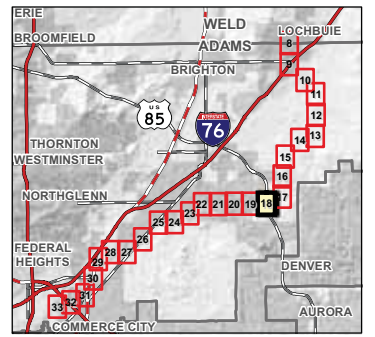
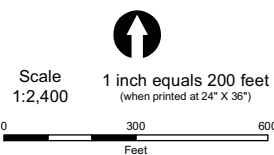
- ### Boundaries
- County
  - Municipal

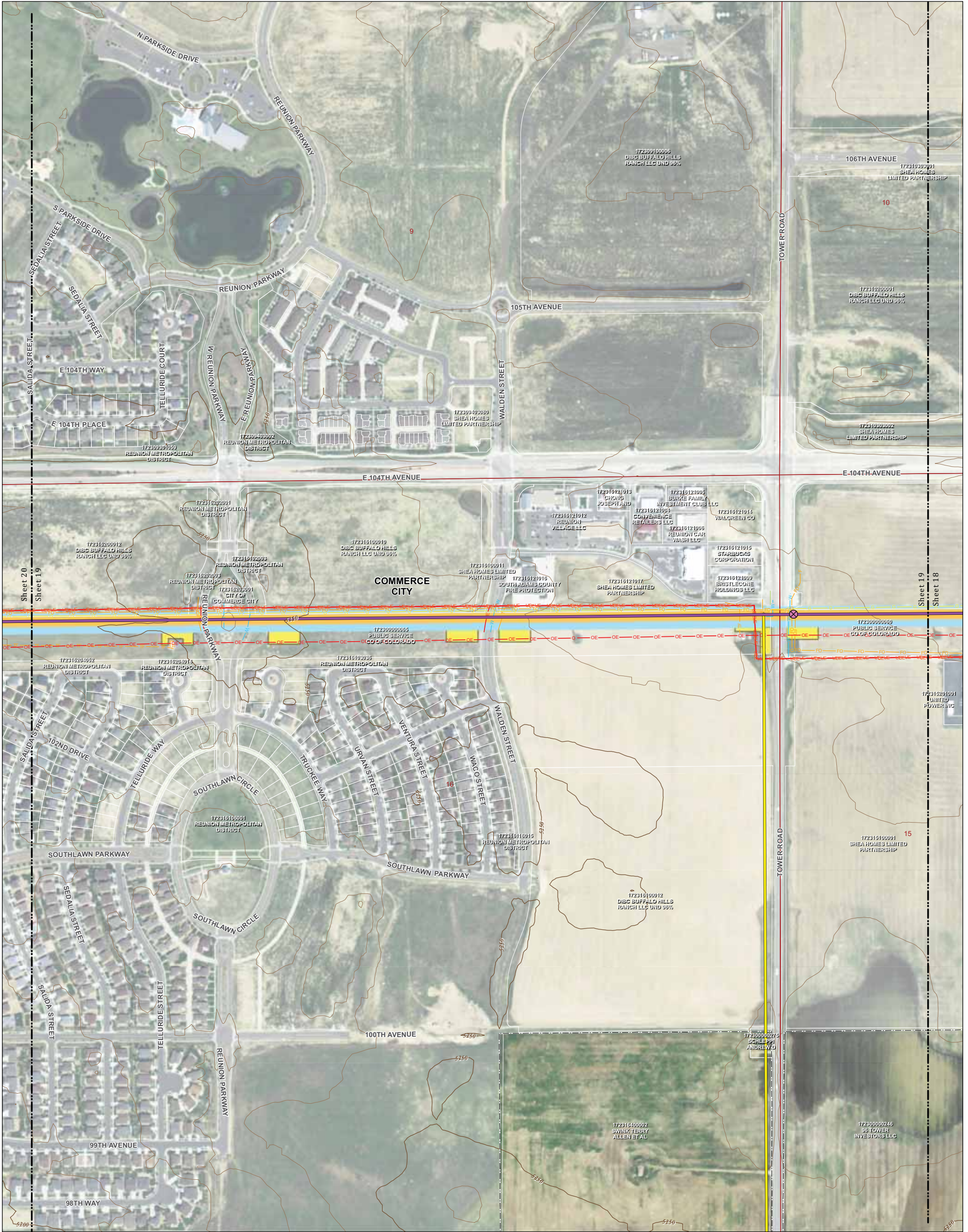
### Hydrology

- Perennial Stream
- Intermittent Stream
- Canal/Ditch

### Existing Utilities

- Cable TV Fiber
- Overhead Electric
- Underground Electric
- Gas
- Petroleum
- Storm Sewer
- Telephone Fiber
- Telephone
- Water





# CHEROKEE NATURAL GAS PIPELINE PROJECT

## Alignment Sheet 19

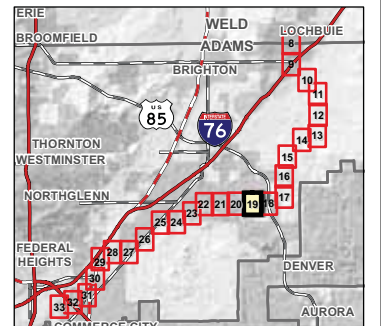
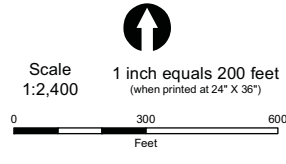
- Valve Set
- Proposed Pipeline Route
- Alternative Pipeline Route
- Fort Lupton Facilities Site
- Staging Area
- Temporary Use Area
- Permanent ROW
- Construction ROW
- Boundaries**
- County
- Municipal

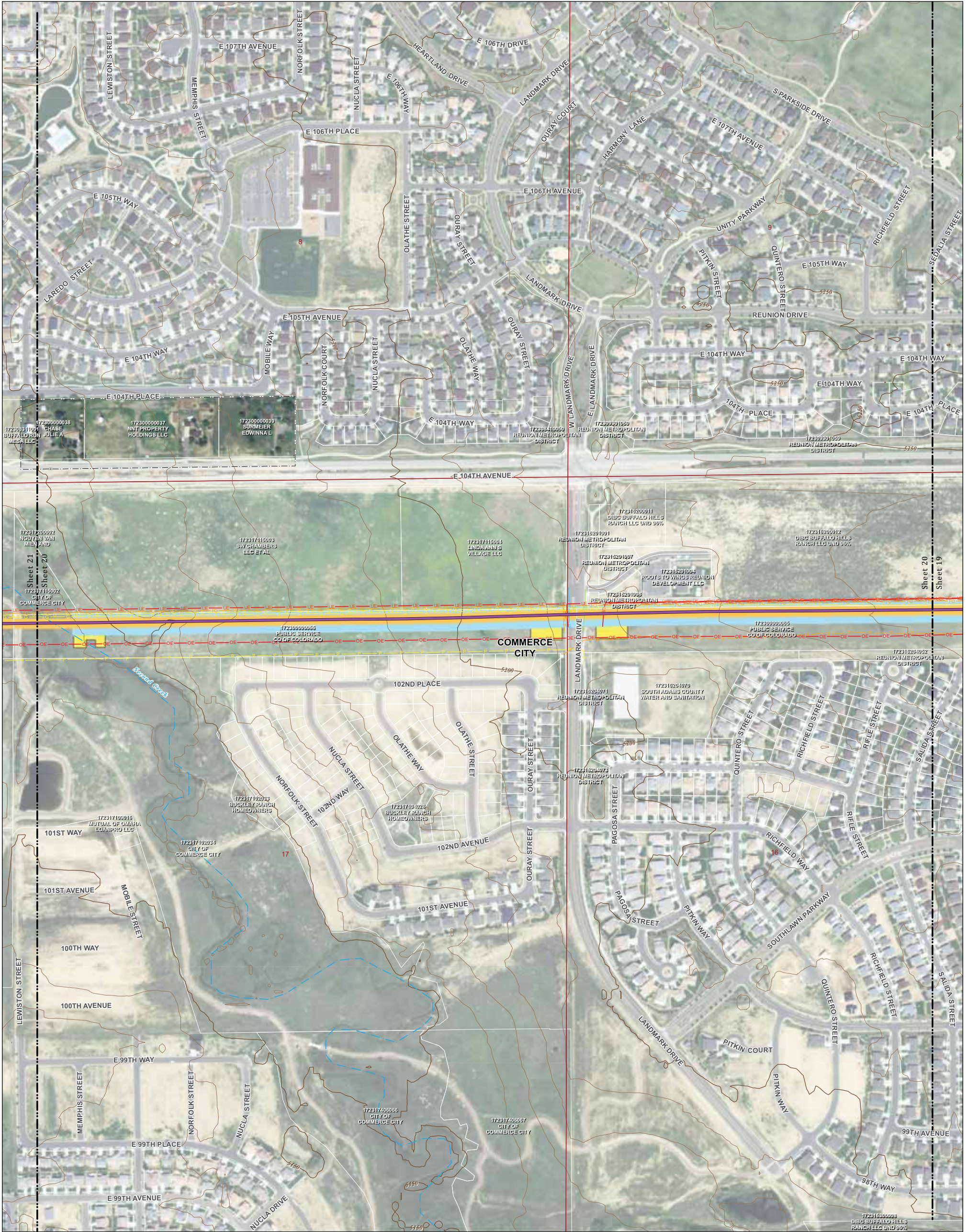
### Hydrology

- Perennial Stream
- Intermittent Stream
- Canal/Ditch

### Existing Utilities

- Cable TV Fiber
- Overhead Electric
- Underground Electric
- Gas
- Petroleum
- Storm Sewer
- Telephone Fiber
- Telephone
- Water





# CHEROKEE NATURAL GAS PIPELINE PROJECT

## Alignment Sheet 20

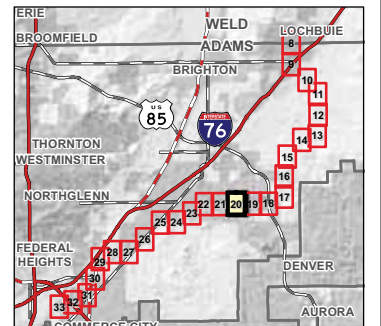
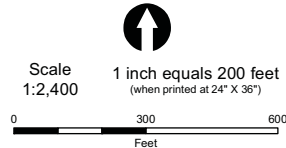
- Valve Set
- Proposed Pipeline Route
- Alternative Pipeline Route
- Fort Lupton Facilities Site
- Staging Area
- Temporary Use Area
- Permanent ROW
- Construction ROW
- Boundaries**
- County
- Municipal

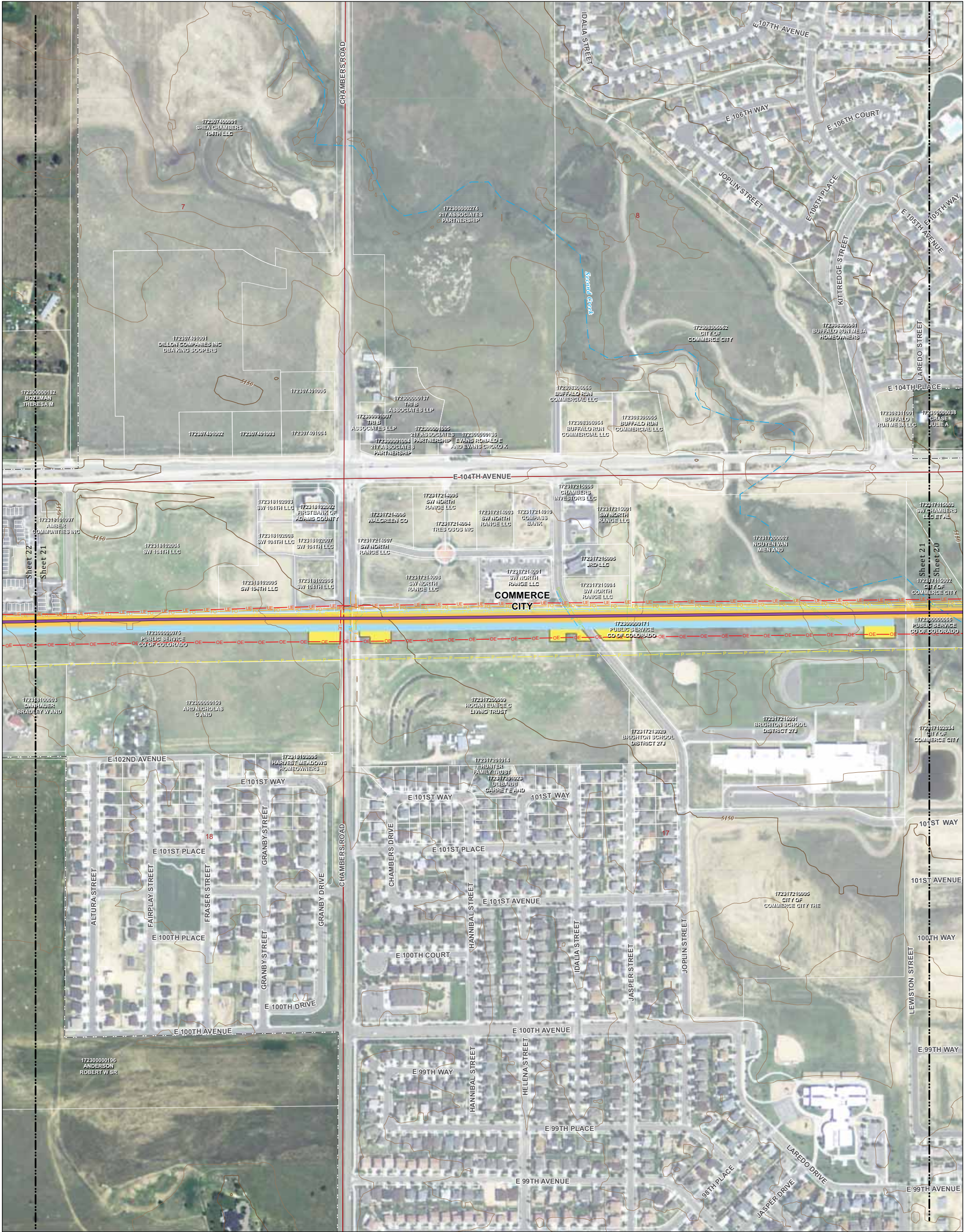
### Hydrology

- Perennial Stream
- Intermittent Stream
- Canal/Ditch

### Existing Utilities

- Cable TV Fiber
- Overhead Electric
- Underground Electric
- Gas
- Petroleum
- Storm Sewer
- Telephone Fiber
- Telephone
- Water





# CHEROKEE NATURAL GAS PIPELINE PROJECT

## Alignment Sheet 21

- Valve Set
- Proposed Pipeline Route
- Alternative Pipeline Route
- Fort Lupton Facilities Site
- Staging Area
- Temporary Use Area
- Permanent ROW
- Construction ROW

### Hydrology

- Perennial Stream
- Intermittent Stream
- Canal/Ditch

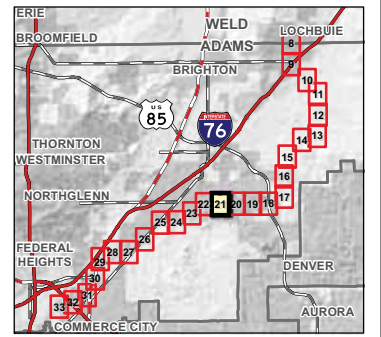
### Existing Utilities

- Cable TV Fiber
- Overhead Electric
- Underground Electric
- Gas
- Petroleum
- Storm Sewer
- Telephone Fiber
- Telephone
- Water

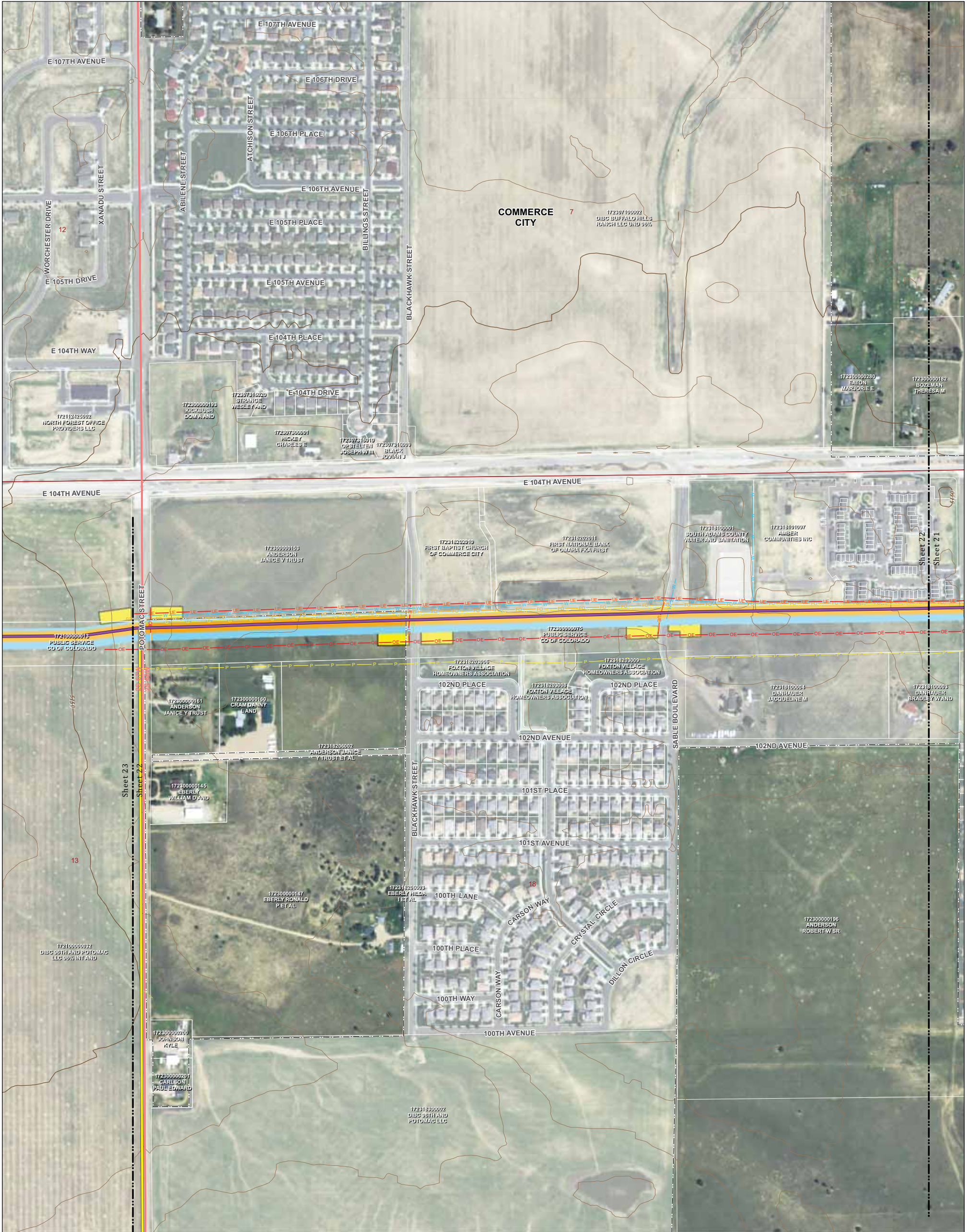
### Boundaries

- County
- Municipal

Scale 1:2,400  
1 inch equals 200 feet  
(when printed at 24" X 36")



Xcel Energy TETRA TECH, INC.  
Sources: NHD, BTS, CDOT, URS, NAIP, Tetra Tech, USGS  
Path: P:\4360\_Cherokee\_Pipeline\GIS\Layouts\Commerce\_City\Alignment\_Sheets\_cc\_120821.mxd



# CHEROKEE NATURAL GAS PIPELINE PROJECT

## Alignment Sheet 22

- Valve Set
- Proposed Pipeline Route
- Alternative Pipeline Route
- Fort Lupton Facilities Site
- Staging Area
- Temporary Use Area
- Permanent ROW
- Construction ROW
- Boundaries**
- County
- Municipal

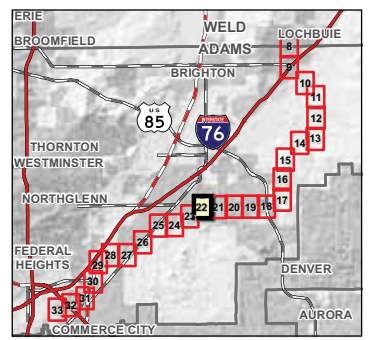
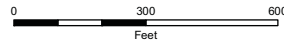
### Hydrology

- Perennial Stream
- Intermittent Stream
- Canal/Ditch

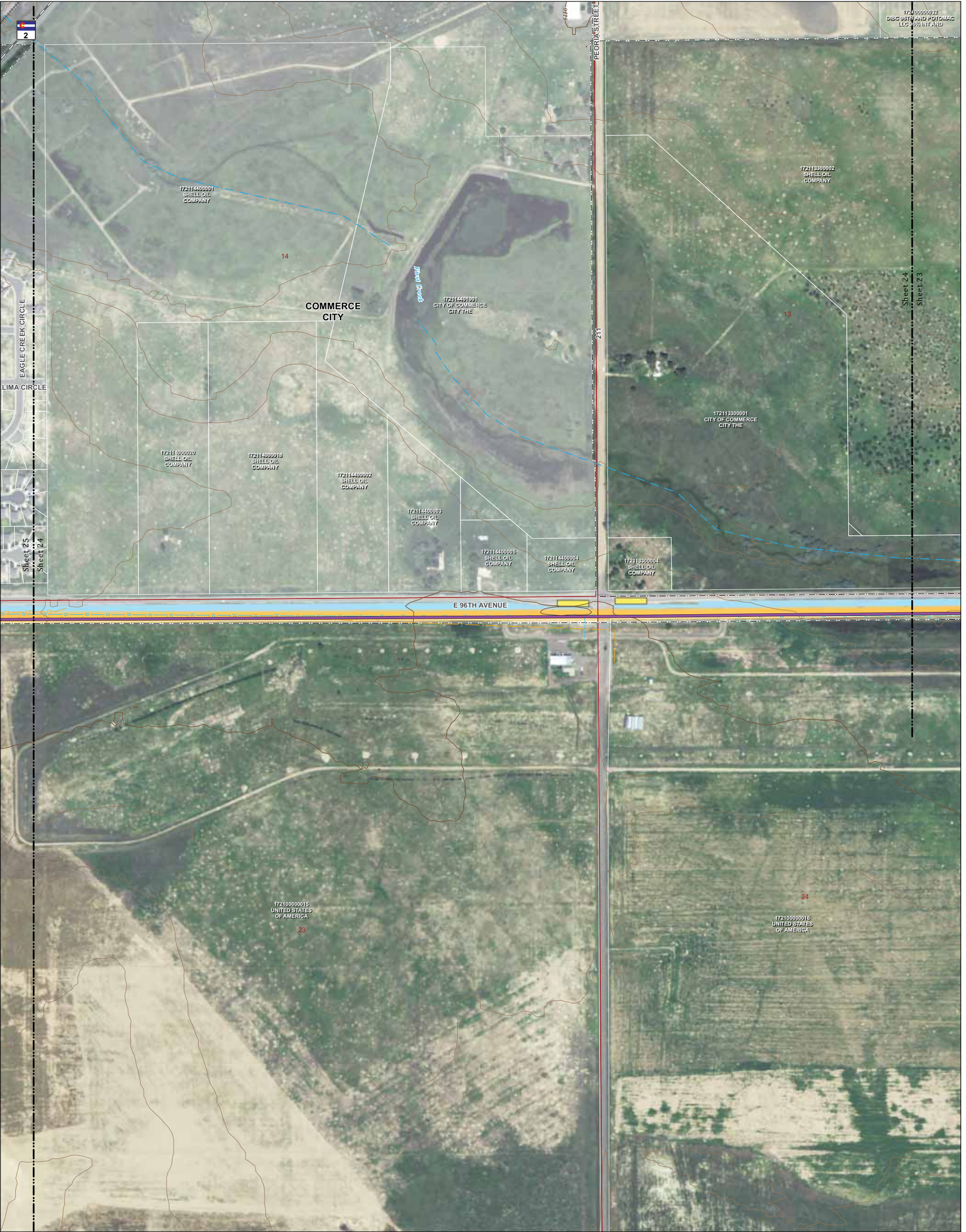
### Existing Utilities

- Cable TV Fiber
- Overhead Electric
- Underground Electric
- Gas
- Petroleum
- Storm Sewer
- Telephone Fiber
- Telephone
- Water

Scale  
1:2,400  
1 inch equals 200 feet  
(when printed at 24" X 36")







# CHEROKEE NATURAL GAS PIPELINE PROJECT

## Alignment Sheet 24

- Valve Set
- Proposed Pipeline Route
- Alternative Pipeline Route
- Fort Lupton Facilities Site
- Staging Area
- Temporary Use Area
- Permanent ROW
- Construction ROW

### Boundaries

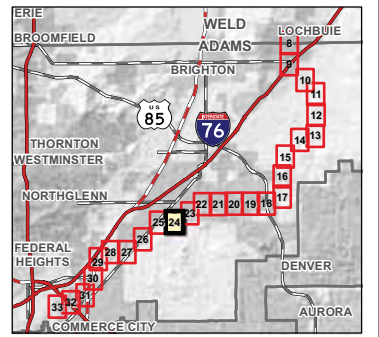
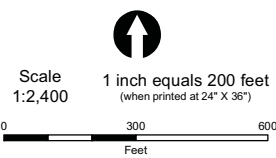
- County
- Municipal

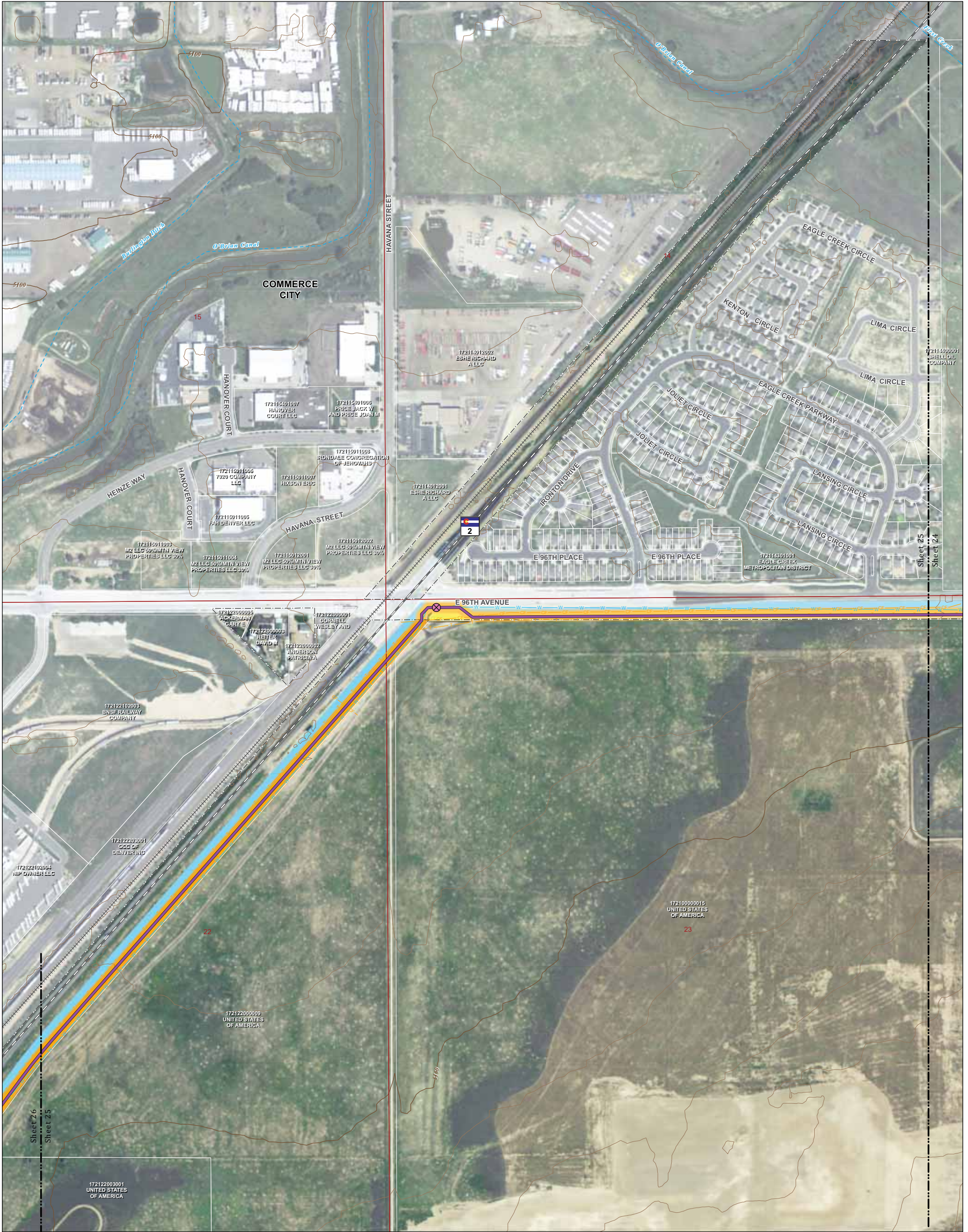
### Hydrology

- Perennial Stream
- Intermittent Stream
- Canal/Ditch

### Existing Utilities

- Cable TV Fiber
- Overhead Electric
- Underground Electric
- Gas
- Petroleum
- Storm Sewer
- Telephone Fiber
- Telephone
- Water





# CHEROKEE NATURAL GAS PIPELINE PROJECT

## Alignment Sheet 25

- Valve Set
- Proposed Pipeline Route
- Alternative Pipeline Route
- Fort Lupton Facilities Site
- Staging Area
- Temporary Use Area
- Permanent ROW
- Construction ROW
- Boundaries**
- County
- Municipal

### Hydrology

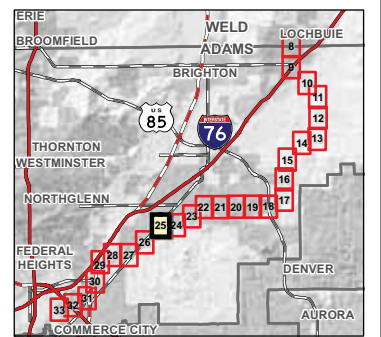
- Perennial Stream
- Intermittent Stream
- Canal/Ditch

### Existing Utilities

- Cable TV Fiber
- Overhead Electric
- Underground Electric
- Gas
- Petroleum
- Storm Sewer
- Telephone Fiber
- Telephone
- Water

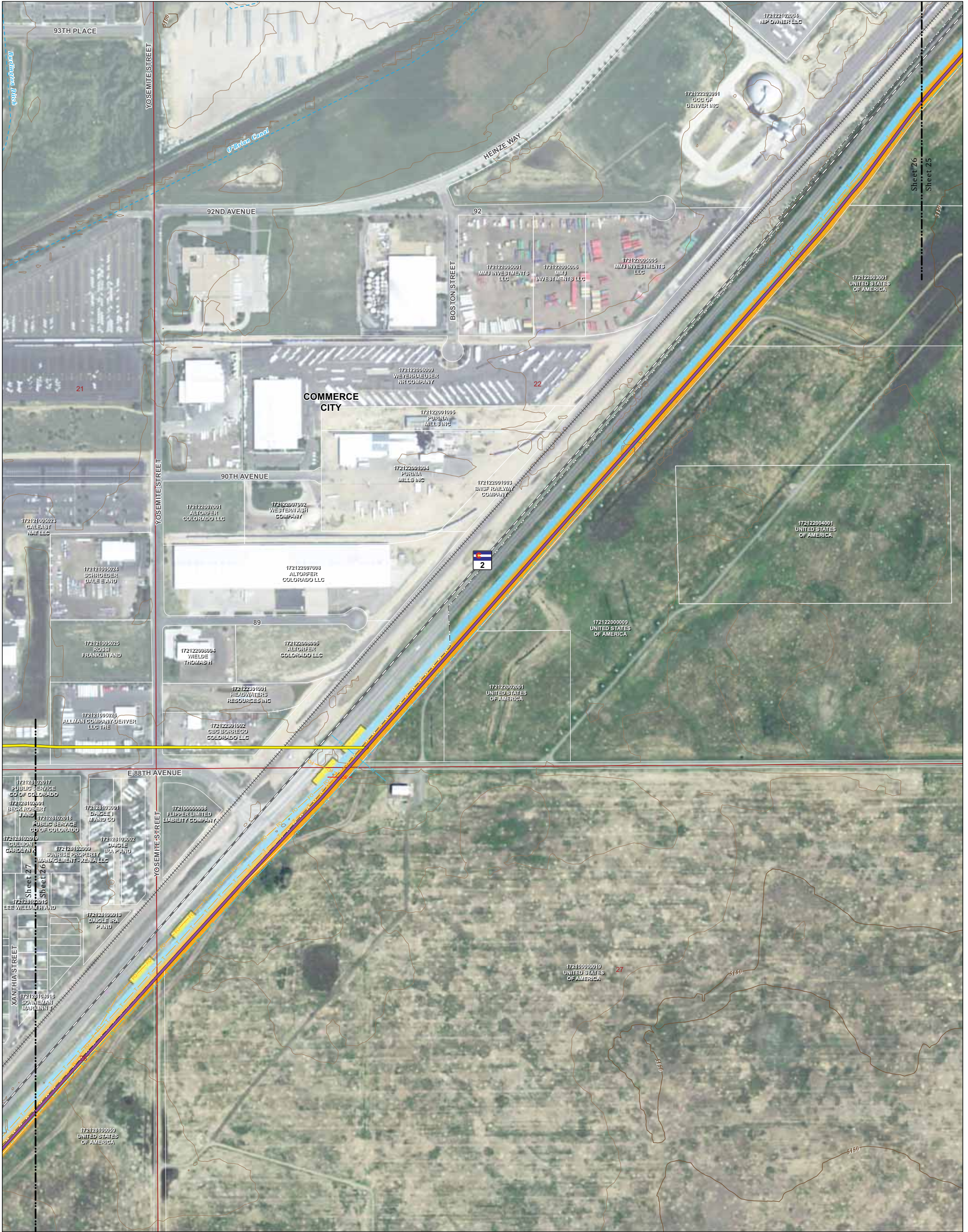
Scale  
1:2,400  
1 inch equals 200 feet  
(when printed at 24" X 36")

0 300 600  
Feet



Xcel Energy TETRA TECH, INC.

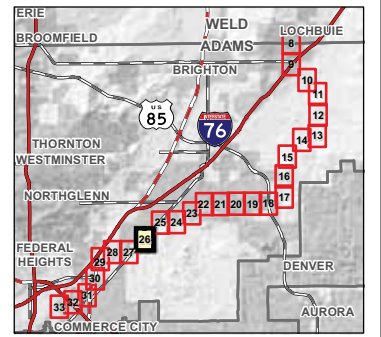
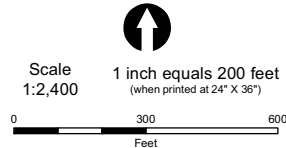
Sources: NHD, BTS, CDOT, URS, NAIP, Tetra Tech, USGS  
Path: P:\4360\_Cherokee\_Pipeline\GIS\Layouts\Commerce\_City\Alignment\_Sheets\_cc\_120821.mxd



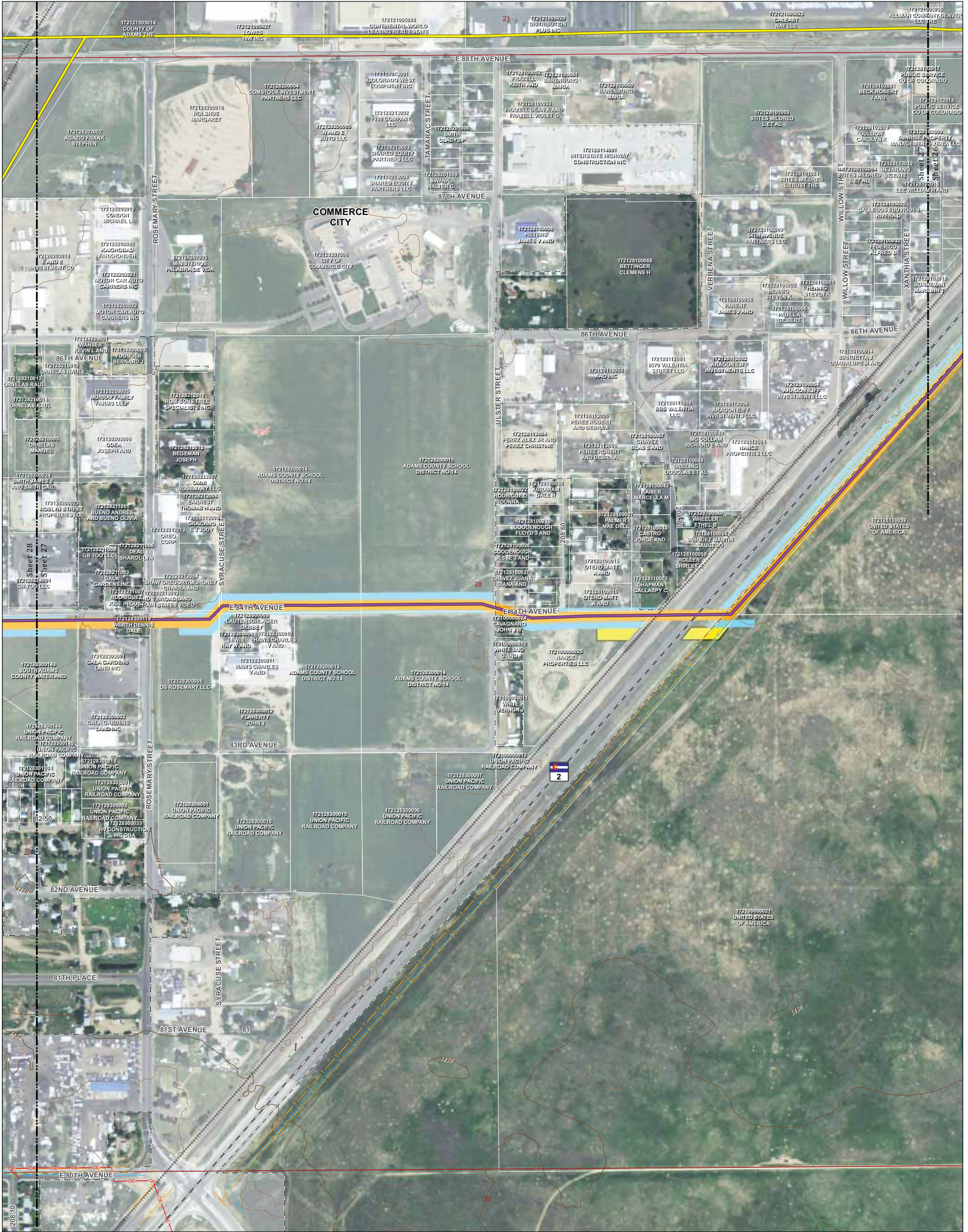
# CHEROKEE NATURAL GAS PIPELINE PROJECT

## Alignment Sheet 26

- Valve Set
  - Proposed Pipeline Route
  - Alternative Pipeline Route
  - Fort Lupton Facilities Site
  - Staging Area
  - Temporary Use Area
  - Permanent ROW
  - Construction ROW
- Hydrology**
- Perennial Stream
  - Intermittent Stream
  - Canal/Ditch
- Existing Utilities**
- Cable TV Fiber
  - Overhead Electric
  - Underground Electric
  - Gas
  - Petroleum
  - Storm Sewer
  - Telephone Fiber
  - Telephone
  - Water
- Boundaries**
- County
  - Municipal



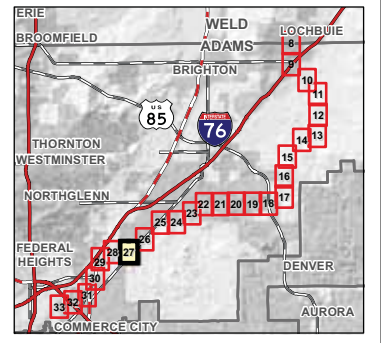
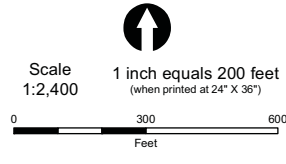
Sources: NHD, BTS, CDOT, URS, NAIP, Tetra Tech, USGS  
 Path: P:\14360\_Cherokee\_Pipeline\GIS\Layouts\Commerce\_City\Alignment\_Sheets\_cc\_120821.mxd



# CHEROKEE NATURAL GAS PIPELINE PROJECT

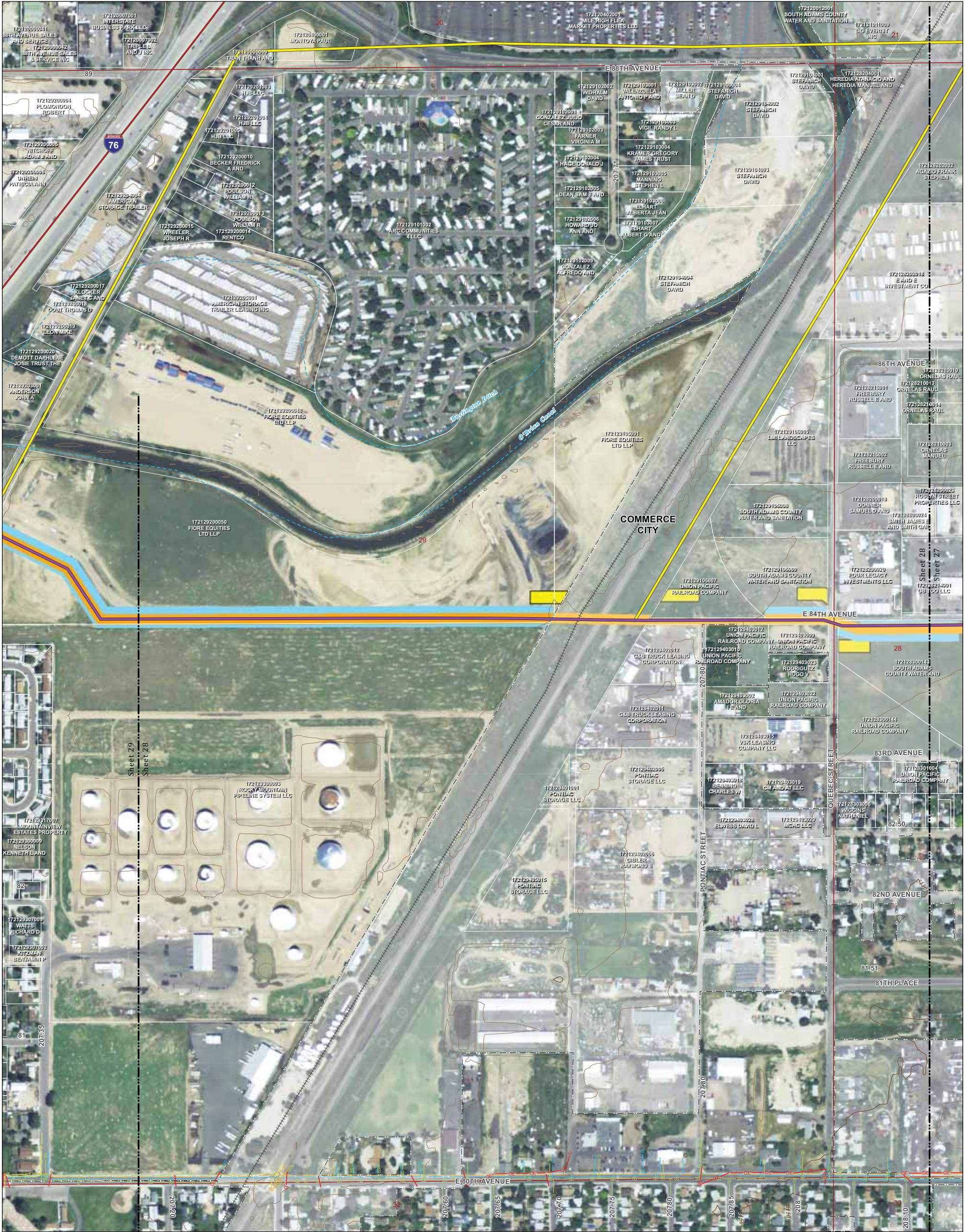
## Alignment Sheet 27

- Valve Set
  - Proposed Pipeline Route
  - Alternative Pipeline Route
  - Fort Lupton Facilities Site
  - Staging Area
  - Temporary Use Area
  - Permanent ROW
  - Construction ROW
- Boundaries**
- County
  - Municipal
- Hydrology**
- Perennial Stream
  - Intermittent Stream
  - Canal/Ditch
- Existing Utilities**
- Cable TV Fiber
  - Overhead Electric
  - Underground Electric
  - Gas
  - Storm Sewer
  - Telephone Fiber
  - Telephone
  - Water
  - Petroleum



**Xcel Energy** **Tetra Tech**

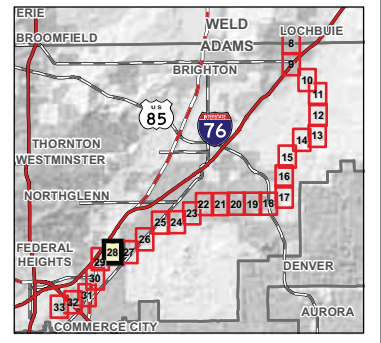
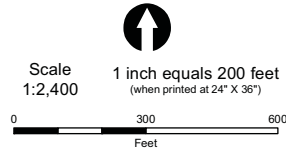
Sources: NHD, BTS, CDOT, URS, NAIP, Tetra Tech, USGS  
 Path: P:\14360\_Cherokee\_Pipeline\GIS\Layouts\Commerce\_City\Alignment\_Sheets\_cc\_120821.mxd



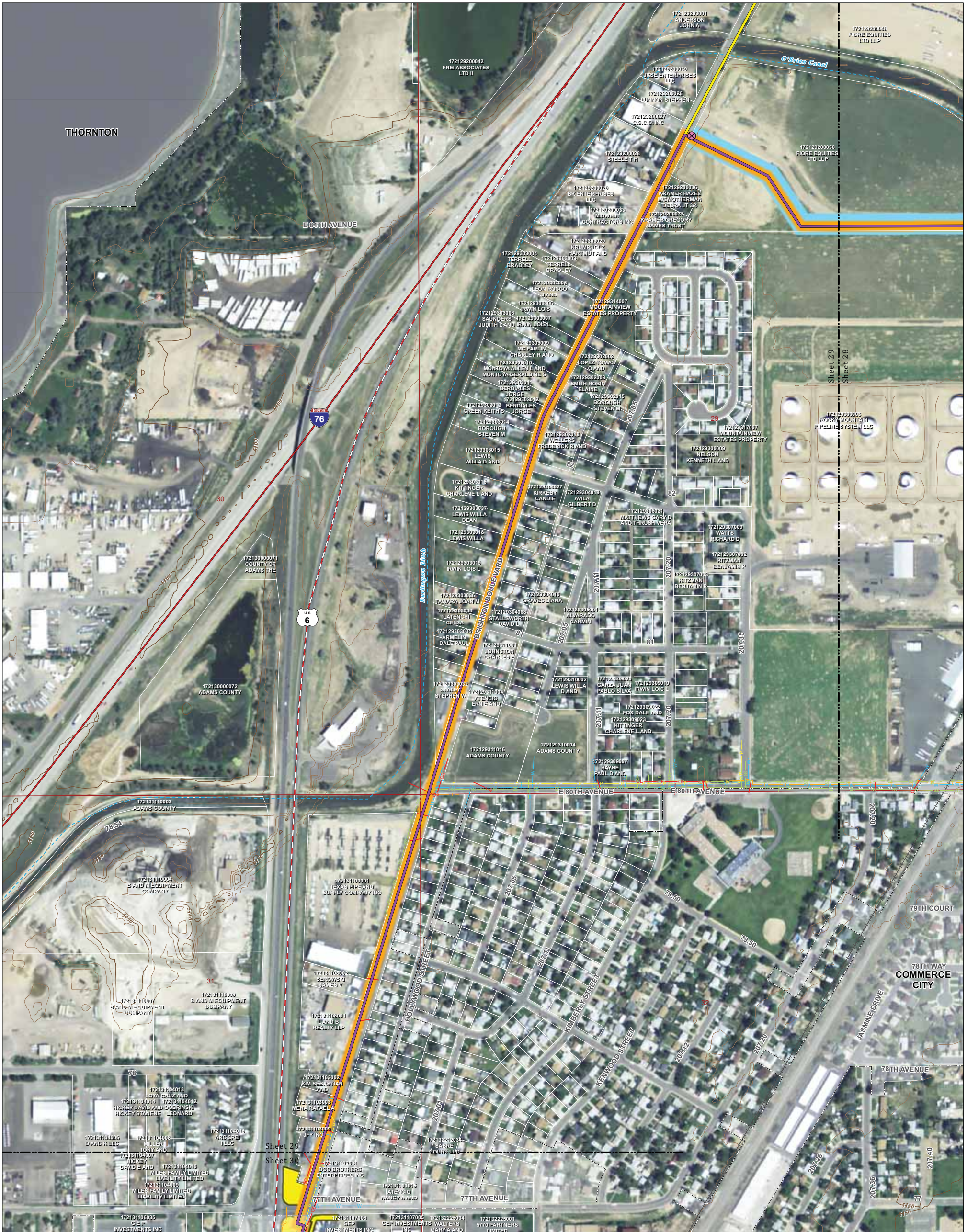
# CHEROKEE NATURAL GAS PIPELINE PROJECT

## Alignment Sheet 28

- Valve Set
- Proposed Pipeline Route
- Alternative Pipeline Route
- Fort Lupton Facilities Site
- Staging Area
- Temporary Use Area
- Permanent ROW
- Construction ROW
- Boundaries**
  - County
  - Municipal
- Hydrology**
  - Perennial Stream
  - Intermittent Stream
  - Canal/Ditch
- Existing Utilities**
  - Cable TV Fiber
  - Overhead Electric
  - Underground Electric
  - Gas
  - Petroleum
  - Storm Sewer
  - Telephone Fiber
  - Telephone
  - Water



**Xcel Energy** **Tetra Tech, Inc.**  
 Sources: NHD, BTS, CDOT, URS, NAIP, Tetra Tech, USGS  
 Path: P:\4360\_Cherokee\_Pipeline\GIS\Layouts\Commerce\_City\Alignment\_Sheets\_cc\_120821.mxd



# CHEROKEE NATURAL GAS PIPELINE PROJECT

## Alignment Sheet 29

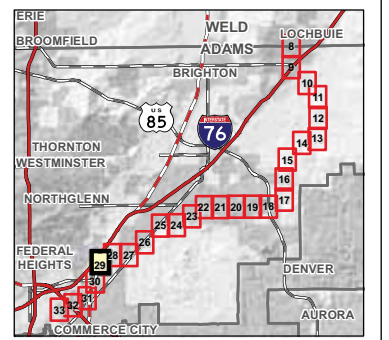
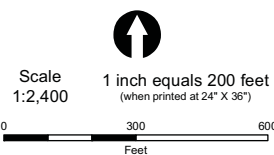
- Valve Set
- Proposed Pipeline Route
- Alternative Pipeline Route
- Fort Lupton Facilities Site
- Staging Area
- Temporary Use Area
- Permanent ROW
- Construction ROW
- Boundaries**
- County
- Municipal

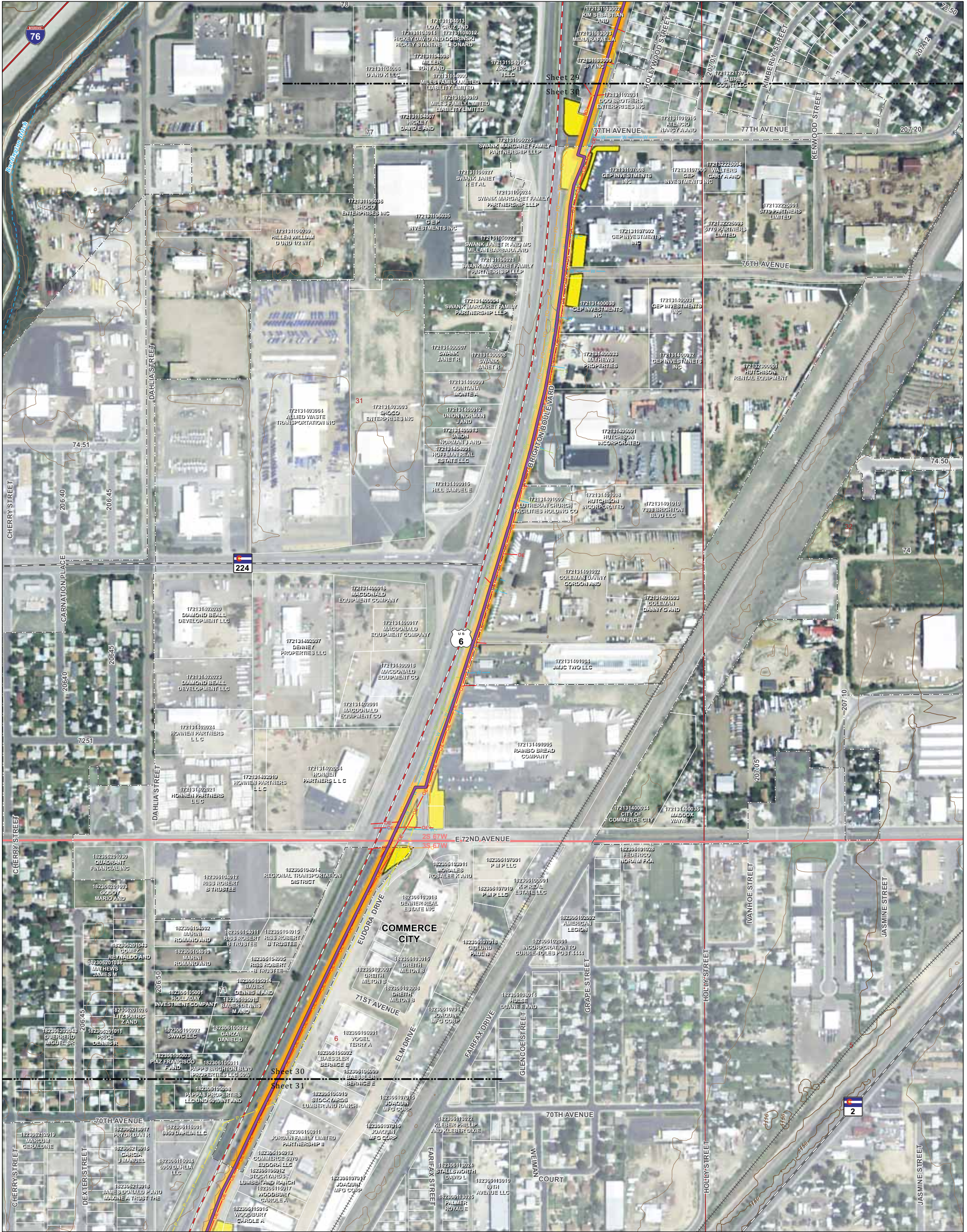
### Hydrology

- Perennial Stream
- Intermittent Stream
- Canal/Ditch

### Existing Utilities

- Cable TV Fiber
- Overhead Electric
- Underground Electric
- Gas
- Petroleum
- Storm Sewer
- Telephone Fiber
- Telephone
- Water





# CHEROKEE NATURAL GAS PIPELINE PROJECT

## Alignment Sheet 30

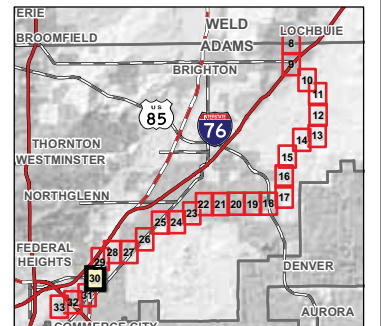
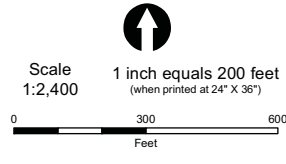
- Valve Set
- Proposed Pipeline Route
- Alternative Pipeline Route
- Fort Lupton Facilities Site
- Staging Area
- Temporary Use Area
- Permanent ROW
- Construction ROW
- Boundaries**
- County
- Municipal

### Hydrology

- Perennial Stream
- Intermittent Stream
- Canal/Ditch

### Existing Utilities

- Cable TV Fiber
- Overhead Electric
- Underground Electric
- Gas
- Petroleum
- Storm Sewer
- Telephone Fiber
- Telephone
- Water





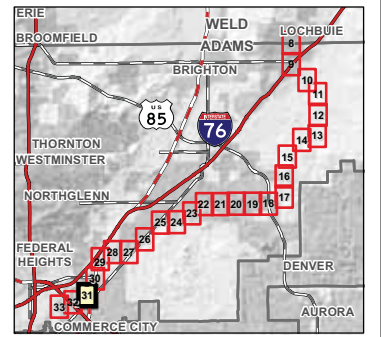
# CHEROKEE NATURAL GAS PIPELINE PROJECT

## Alignment Sheet 31

- Valve Set
  - Proposed Pipeline Route
  - Alternative Pipeline Route
  - Fort Lupton Facilities Site
  - Staging Area
  - Temporary Use Area
  - Permanent ROW
  - Construction ROW
  - Boundaries**
  - County
  - Municipal
- 
- Hydrology**
  - Perennial Stream
  - Intermittent Stream
  - Canal/Ditch
  - Existing Utilities**
  - Cable TV Fiber
  - Overhead Electric
  - Underground Electric
  - Gas
  - Storm Sewer
  - Telephone Fiber
  - Telephone
  - Water
  - Petroleum

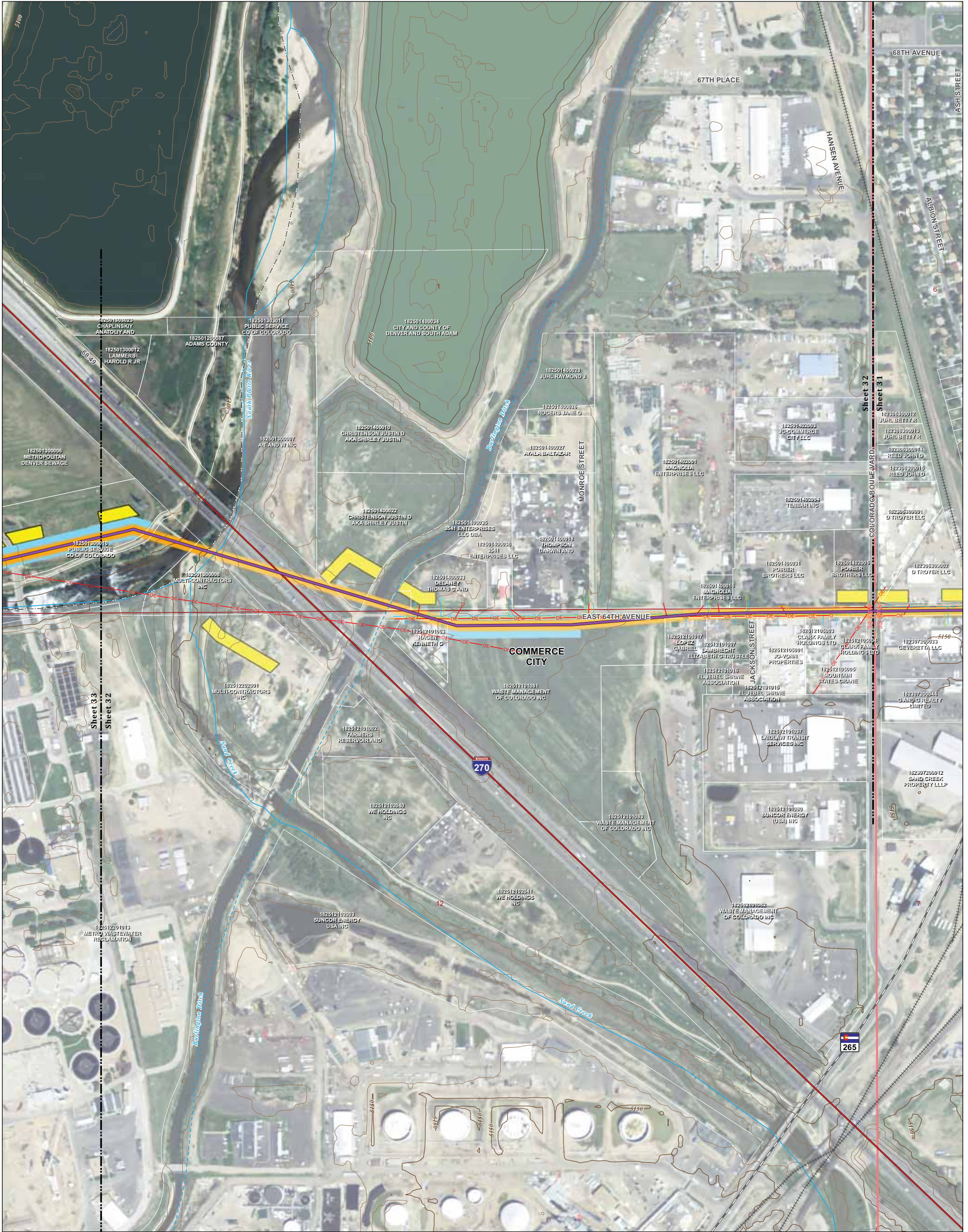
Scale  
1:2,400  
1 inch equals 200 feet  
(when printed at 24" X 36")

0 300 600  
Feet



Xcel Energy TETRA TECH, INC.

Sources: NHD, BTS, CDOT, URS, NAIP, Tetra Tech, USGS  
 Path: P:\14360\_Cherokee\_Pipeline\GIS\Layouts\Commerce\_City\Alignment\_Sheets\_cc\_120821.mxd



# CHEROKEE NATURAL GAS PIPELINE PROJECT

## Alignment Sheet 32

- Valve Set
- Proposed Pipeline Route
- Alternative Pipeline Route
- Fort Lupton Facilities Site
- Staging Area
- Temporary Use Area
- Permanent ROW
- Construction ROW
- Boundaries**
- County
- Municipal

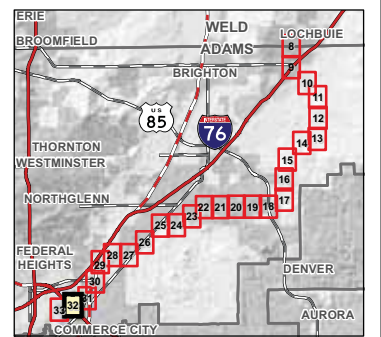
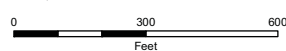
### Hydrology

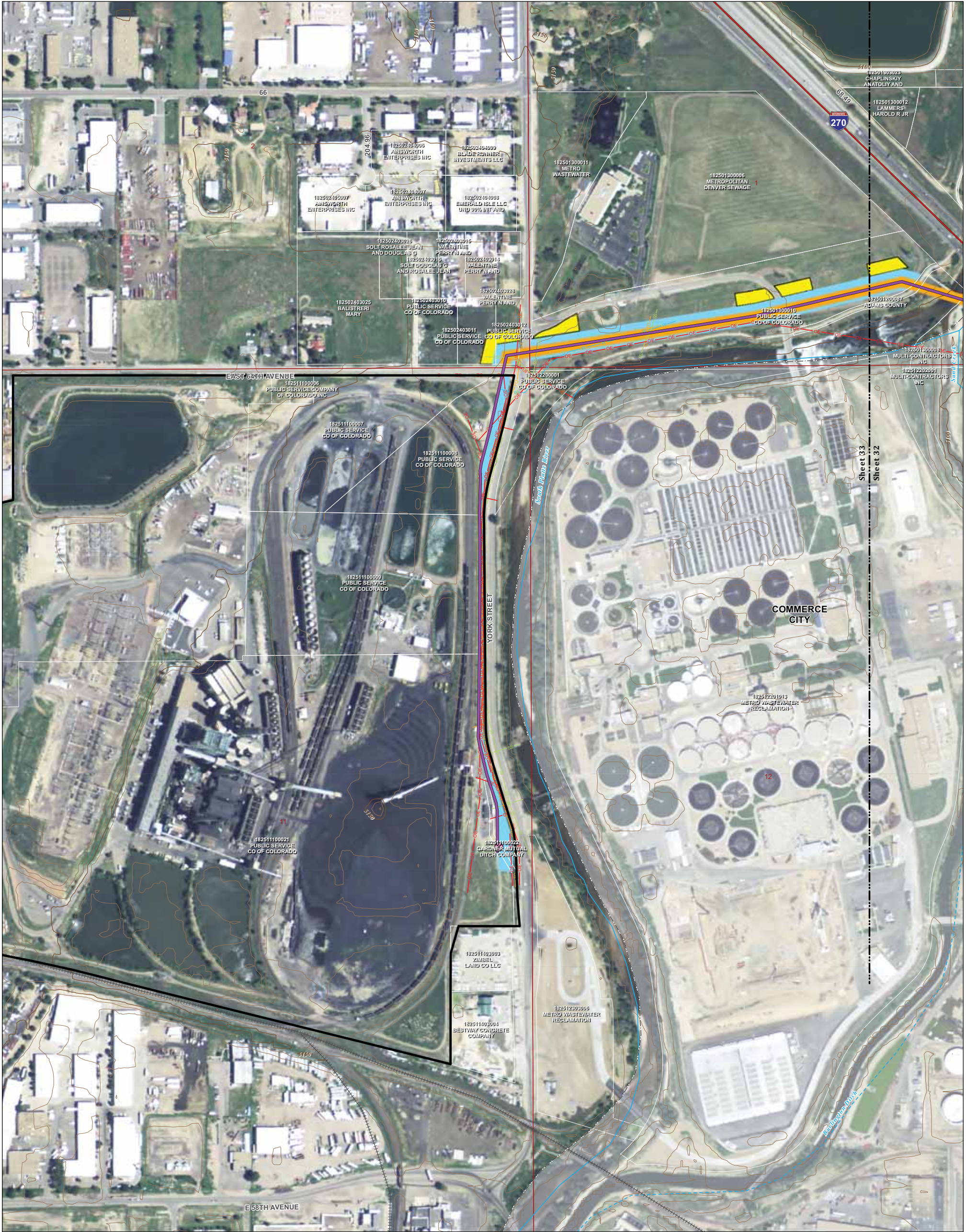
- Perennial Stream
- Intermittent Stream
- Canal/Ditch

### Existing Utilities

- Cable TV Fiber
- Overhead Electric
- Underground Electric
- Gas
- Petroleum
- Storm Sewer
- Telephone Fiber
- Telephone
- Water

Scale  
1:2,400  
1 inch equals 200 feet  
(when printed at 24" X 36")





# CHEROKEE NATURAL GAS PIPELINE PROJECT

## Alignment Sheet 33

- Valve Set
- Proposed Pipeline Route
- Alternative Pipeline Route
- Fort Lupton Facilities Site
- Staging Area
- Temporary Use Area
- Permanent ROW
- Construction ROW
- Boundaries**
- County
- Municipal

### Hydrology

- Perennial Stream
- Intermittent Stream
- Canal/Ditch

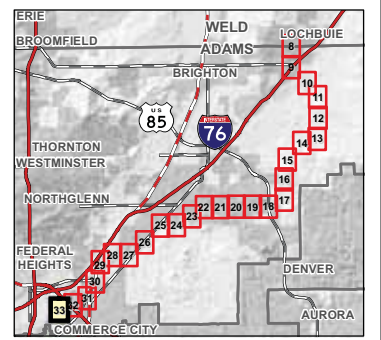
### Existing Utilities

- Cable TV Fiber
- Overhead Electric
- Underground Electric
- Gas
- Petroleum
- Storm Sewer
- Telephone Fiber
- Telephone
- Water

Scale  
1:2,400

1 inch equals 200 feet  
(when printed at 24" X 36")

0 300 600  
Feet



Xcel Energy TETRA TECH, INC.

Sources: NHD, BTS, CDOT, URS, NAIP, Tetra Tech, USGS  
 Path: P:\14360\_Cherokee\_Pipeline\GIS\Layouts\Commerce\_City\Alignment\_Sheets\_cc\_120821.mxd