

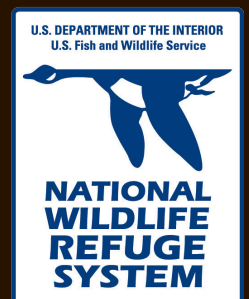
ROCKY MOUNTAIN ARSENAL NATIONAL WILDLIFE REFUGE

COMPREHENSIVE CONSERVATION PLAN

PROCESS UPDATE



U.S. FISH AND WILDLIFE SERVICE



COMPREHENSIVE CONSERVATION PLAN PROCESS



Throughout the process, partners have helped the Service shape the CCP.

GOALS FOR ROCKY MOUNTAIN ARSENAL

- **Habitat Management:** Use an adaptive management framework to conserve, restore and enhance the ecological integrity of the Front Range prairie communities including wetlands, grasslands, native shrubs and trees.
- **Wildlife Management:** Balance and preserve wildlife species of concern through active management.
- **Visitor services:** Foster the public's appreciation of natural resources and provide inclusive, high-quality, wildlife-dependent recreation, education and interpretation.
- **Communication and Outreach:** Through effective communication and innovative technology we engage the public and stakeholders to better understand the importance, nature, operations and history of the refuge complex so they are inspired to participate in and support management and restoration efforts.

GOALS FOR ROCKY MOUNTAIN ARSENAL

- **Research & Science:** Utilize science and promote research to advance the understanding of natural resource functions and management within the complex and beyond.
- **Cultural Resources:** Protect artifacts and interpret the archeological, agricultural, military and industrial history as well as the restoration story of the refuge complex to connect visitors and the community to the area's past.
- **Partnerships:** Seek and foster strong partnerships to support research and management, enhance wildlife-dependent recreation and promote appreciation of nature.
- **Infrastructure & Operations:** Effectively utilize funding, staff, partners, volunteers and equipment to restore and manage refuge complex habitats, conduct programs, and improve and maintain all necessary infrastructure.
- **Access & Transportation:** Support the improvement of appropriate access to the refuges, develop sustainable transportation options and provide more connections within the refuge complex.

ALTERNATIVES

Alternatives = Different sets of management approaches or means of achieving the RMA NWR's purpose, vision and goals; helping fulfill the National Wildlife Refuge System's mission; and resolving issues.

ALT A: NO ACTION

**ALT B: TRADITIONAL
REFUGE**

ALT C: URBAN REFUGE

ALT D: GATEWAY REFUGE

ALTERNATIVE B: TRADITIONAL REFUGE

This alternative focuses on providing traditional refuge visitor uses and conveying the importance of conservation, wildlife protection, and the National Wildlife Refuge System.



Access to the refuge remains more restricted than the other alternatives and wildlife-dependent recreation, as well as, community outreach are minimally expanded.

ALTERNATIVE C: URBAN REFUGE (THE PROPOSED ACTION)

The emphasis of this alternative is to increase the visibility of the refuge within the Denver metropolitan region and to welcome many more non-traditional refuge visitors to the RMA NWR.



Through expanded visitor services programs and “Big 6” wildlife-dependent recreation, the introduction of other appropriate uses, an abundance of instructional programming, and widespread outreach, the Service endeavors to connect more people with nature and wildlife.

The refuge is made far more accessible to neighboring communities with the opening of additional access points and the development of enhanced transportation systems.

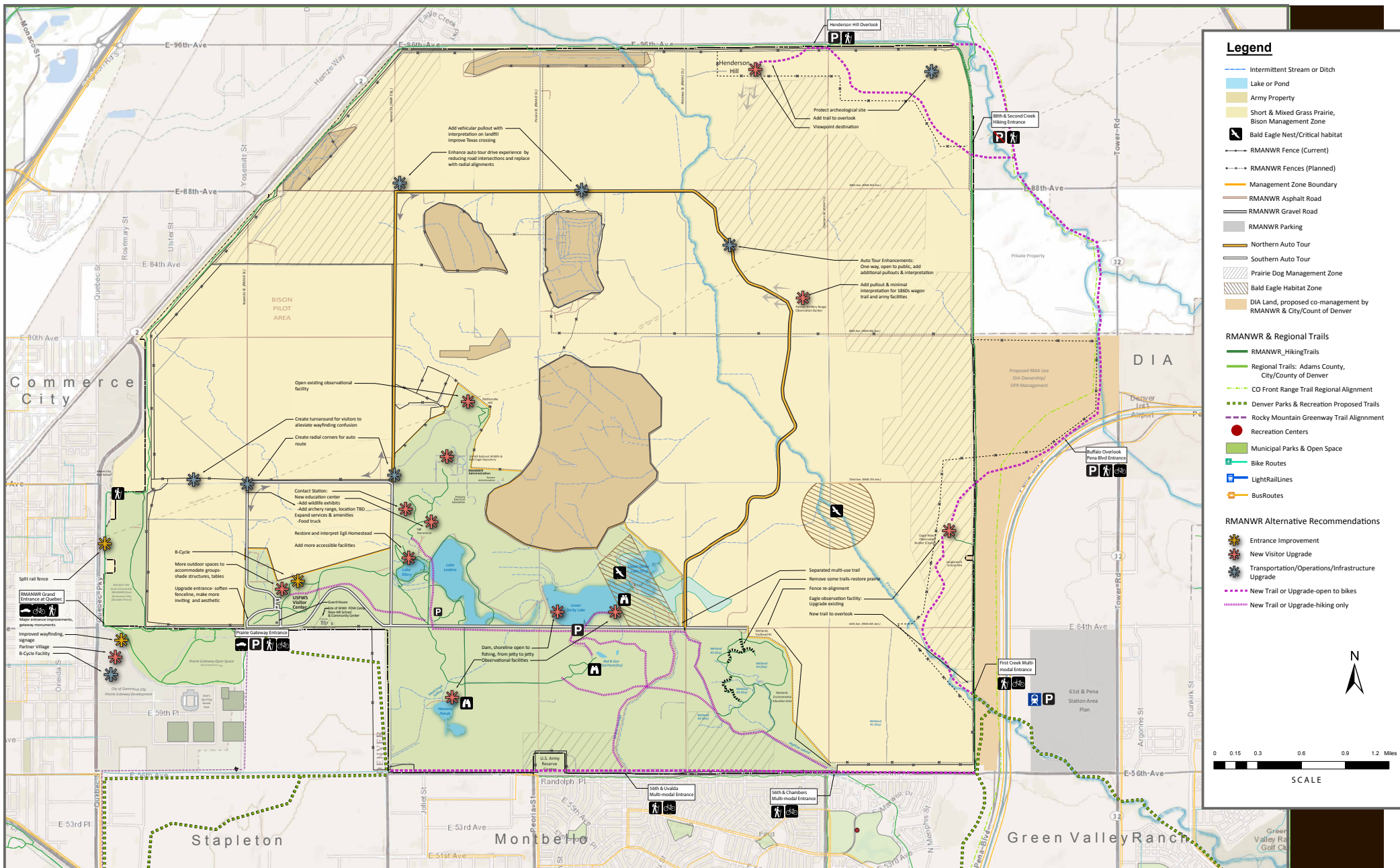


ALTERNATIVE C: URBAN REFUGE



ROCKY MOUNTAIN ARSENAL NATIONAL WILDLIFE ARSENAL Commerce City, Colorado

Planning Alternative C May 16, 2014



ALTERNATIVE D: GATEWAY REFUGE

Under this alternative the Service engages with conservation groups and commercial ventures (e.g., concessionaires, outfitters) to substantially increase programming and visitor uses on the refuge.



The RMA NWR is connected physically and thematically with public lands throughout the state and the nation's refuge system. Through expanded partnerships, commercial activity, and more interpreted cultural resources on the refuge, the Service appeals to the broadest range of visitors including nature enthusiasts, wildlife-dependent recreationalists, and history buffs.

Like Alt C, the refuge is made more accessible to neighboring communities with the opening of additional access points and an enhanced transportation system.

PROPOSED ACTION - ALT C: URBAN REFUGE

We believe that Alternative C best meets the purposes, vision and goals for the refuge and follows the Service's Urban Refuge Initiative. Therefore, in this proposed action, the refuge will:

- Develop the first CCP in the Refuge System based on the Urban Refuge Initiative;
- Reintroduce the endangered Black-footed ferret and other native species;
- Consider renaming the refuge complex of which the refuge is part of;
- Connect the refuge to the Rocky Mountain Greenway Trail Network;
- Co-manage adjacent private lands for wildlife with land-management partners;



PROPOSED ACTION - ALT C: URBAN REFUGE

- Significantly expand compatible, wildlife-dependent recreational opportunities, infrastructure and facilities to appeal to a broader range of visitors and connect urban residents with local natural habitats and wildlife;
- Create additional pedestrian access points to connect the refuge to local and regional communities and trails;
- Work with partners to cross-promote the refuge and its programs, and with neighboring communities to develop a “Partner’s Village”, and with RTD to promote bike-sharing and programs to facilitate public access to the refuge;
- Develop a new, more inviting refuge entrance and fencing alignment;
- Seek ways to enhance and significantly improve the refuge’s transportation systems and facilities.



NEXT STEPS

