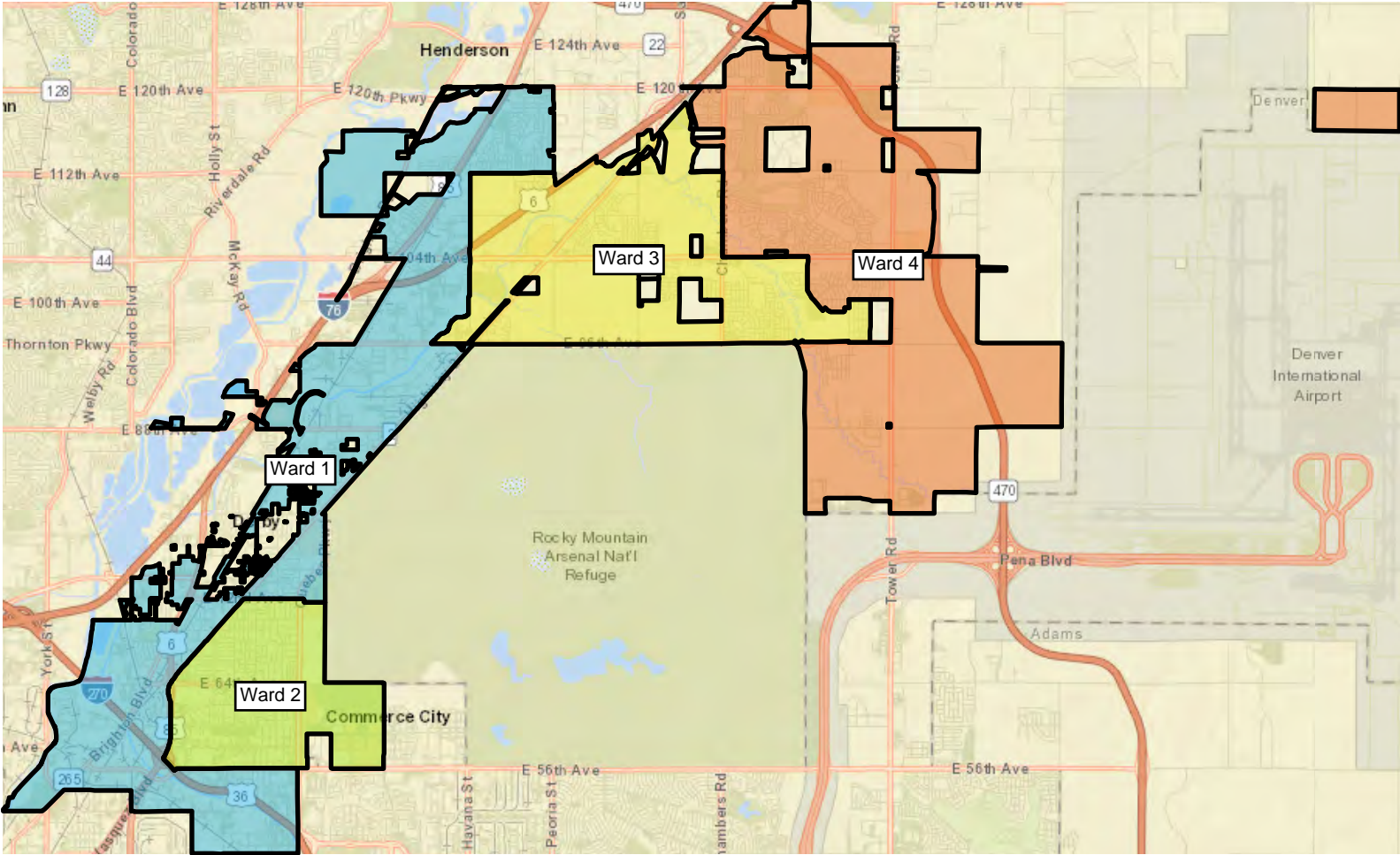
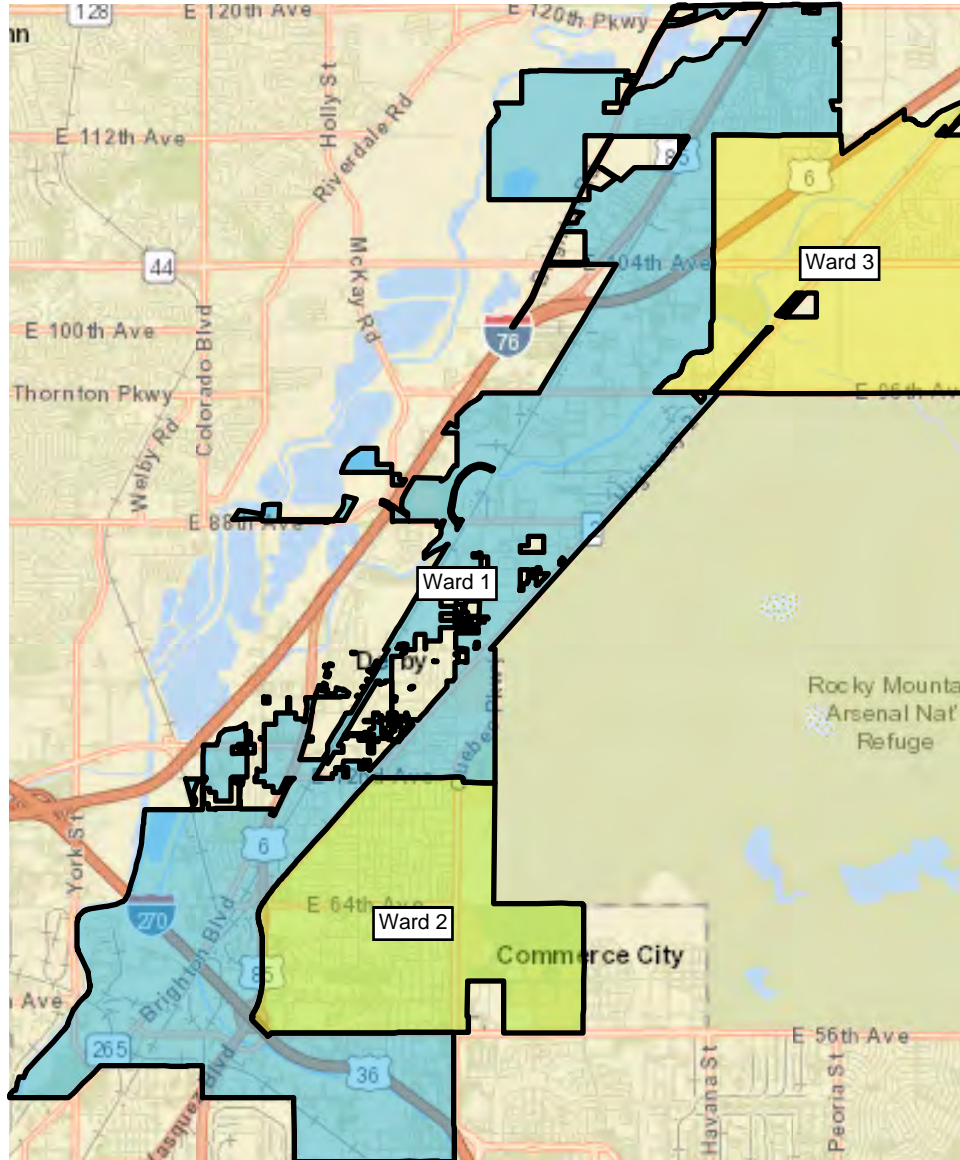
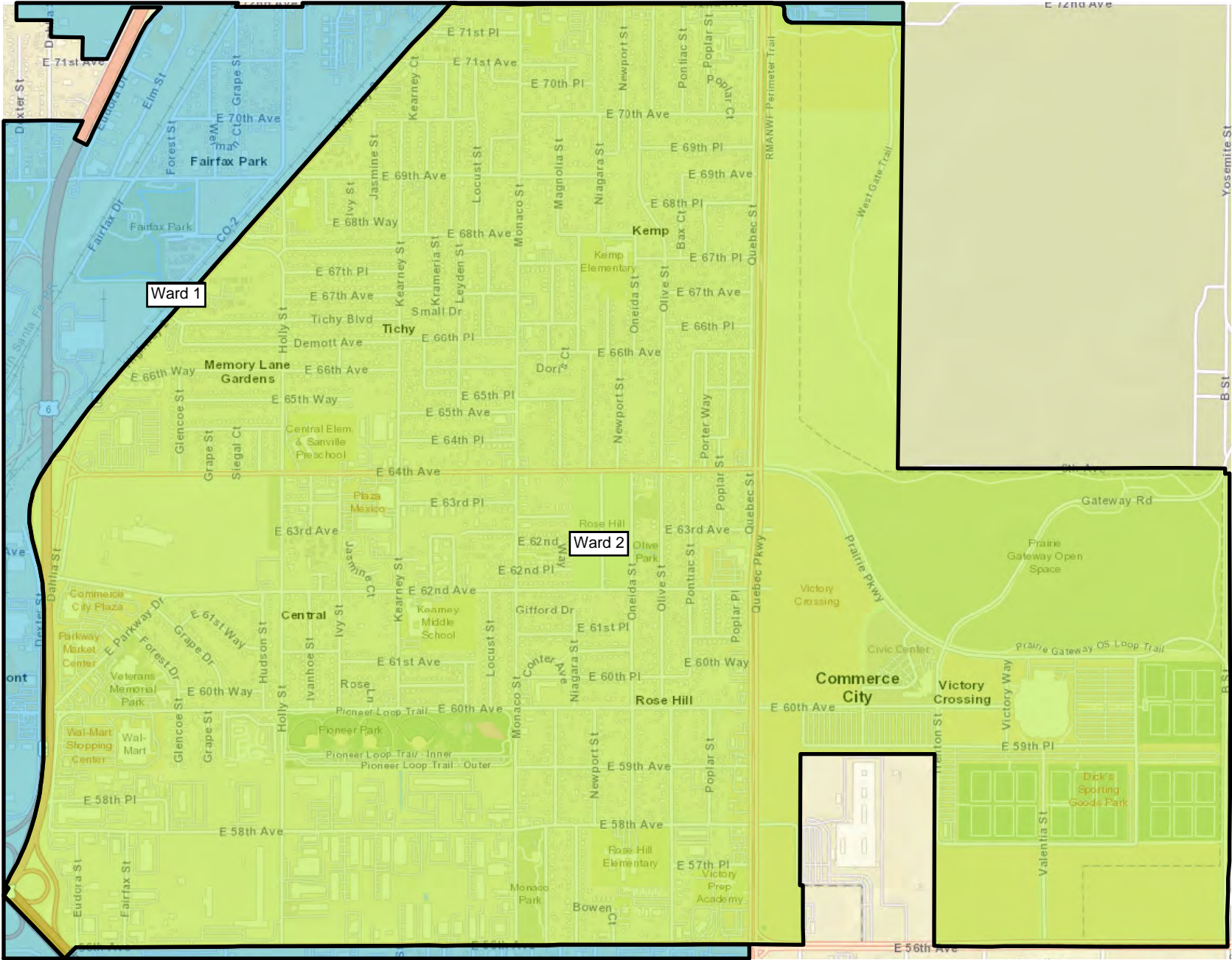
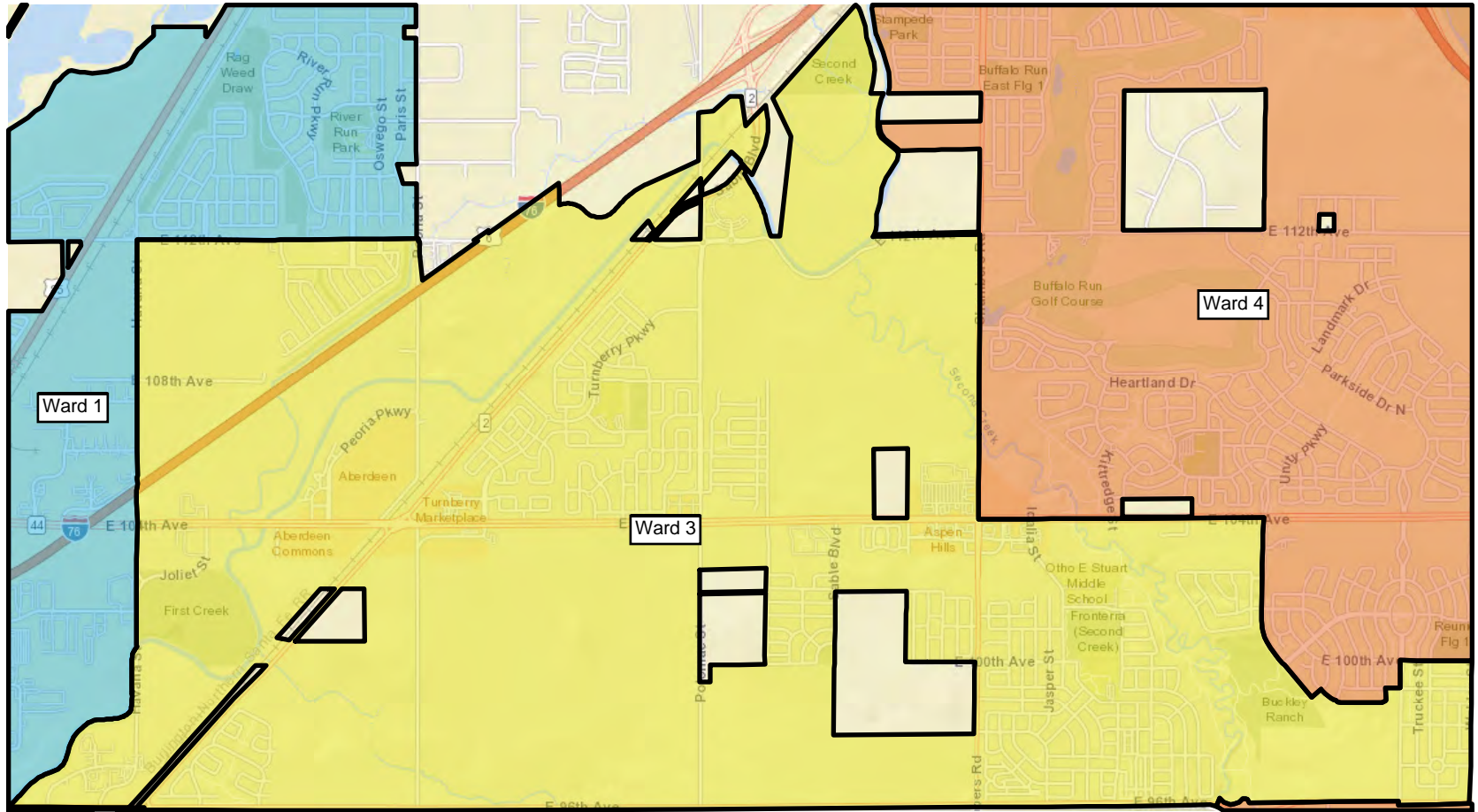


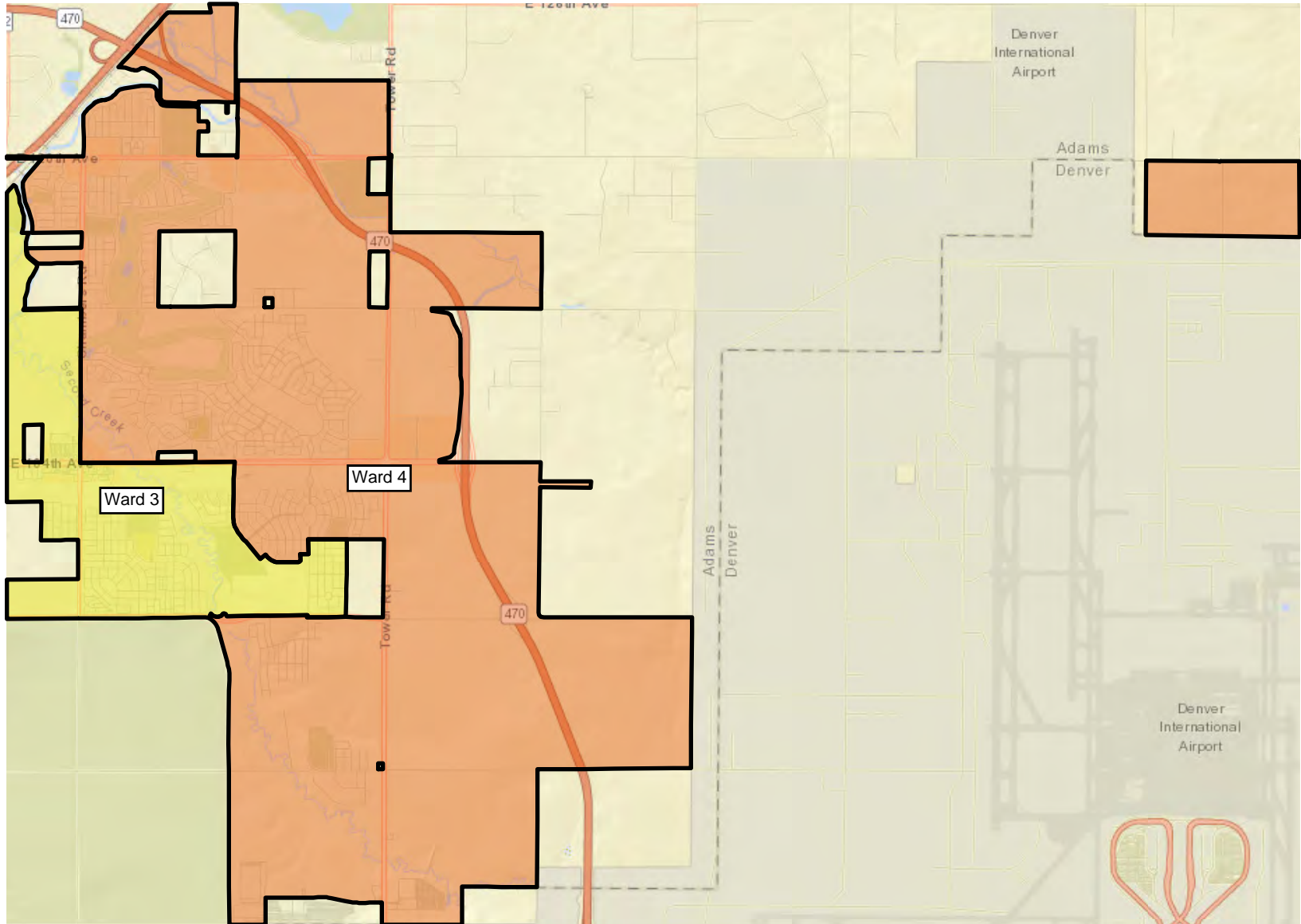
Option B











Population Summary Report

Ward No.	TOTAL Population	Target Population	Target Deviation	Target Deviation (%)	Total (%)	Hispanic (%)	Non-Hispanic (%)	Non-Hispanic white (%)	Non-Hispanic black (%)	White (%)	Black (%)
1	15,226	15,605	-379	-2.43	24.39%	54.74%	45.26%	36.33%	2.75%	49.15%	3.22%
2	15,658	15,605	53	0.34	25.09%	72.22%	27.78%	21.13%	3.70%	36.51%	4.23%
3	15,281	15,605	-324	-2.08	24.48%	39.98%	60.02%	45.56%	5.67%	55.85%	6.33%
4	16,253	15,605	648	4.15	26.04%	29.24%	70.76%	55.57%	5.84%	63.46%	6.39%

TOTAL Population:	62,418
Mean Target Population:	15,605
Mean Deviation:	351
Mean Percent Deviation:	2.25
Largest Positive Deviation:	648
Largest Negative Deviation:	-379
Overall Range in Deviation:	1,027
Overall Range in Deviation Percentage:	6.58

All Districts Summary Report

Ward No. 1

Total Population 15,226

Total Population 18+ 10,700

Deviation -379

Dev. % -2.429

	Total Hispanic	Total Non-Hispanic	Total	Hispanic	Non-Hispanic	Non-Hispanic white	Non-Hispanic black	White	Black
Total	8,335	6,891	15,226	8,335	6,891	5,532	418	7,483	491
Total%	54.74	45.26	100.00	54.74	45.26	36.33	2.75	49.15	3.22
Total18+	5,458	5,242	15,226	5,458	5,242	4,312	265	5,524	292
Total18+%	51.01	48.99	142.30	51.01	48.99	40.30	2.48	51.63	2.73

Ward No. 2

Total Population 15,658

Total Population 18+ 11,040

Deviation 53

Dev. % 0.34

	Total Hispanic	Total Non-Hispanic	Total	Hispanic	Non-Hispanic	Non-Hispanic white	Non-Hispanic black	White	Black
Total	11,308	4,350	15,658	11,308	4,350	3,309	579	5,717	662
Total%	72.22	27.78	100.00	72.22	27.78	21.13	3.70	36.51	4.23
Total18+	7,472	3,568	15,658	7,472	3,568	2,808	390	4,338	431
Total18+%	67.68	32.32	141.83	67.68	32.32	25.43	3.53	39.29	3.90

Ward No. 3

Total Population 15,281

Total Population 18+ 10,466

Deviation -324

Dev. % -2.076

	Total Hispanic	Total Non-Hispanic	Total	Hispanic	Non-Hispanic	Non-Hispanic white	Non-Hispanic black	White	Black
Total	6,109	9,172	15,281	6,109	9,172	6,962	866	8,535	967
Total%	39.98	60.02	100.00	39.98	60.02	45.56	5.67	55.85	6.33
Total18+	3,783	6,683	10,466	3,783	6,683	5,194	569	6,116	607
Total18+%	36.15	63.85	100.00	36.15	63.85	49.63	5.44	58.44	5.80

Ward No. 4

Total Population 16,253

Total Population 18+ 11,300

Deviation 648

Dev. % 4.153

	Total Hispanic	Total Non-Hispanic	Total	Hispanic	Non-Hispanic	Non-Hispanic white	Non-Hispanic black	White	Black
Total	4,753	11,500	16,253	4,753	11,500	9,032	949	10,314	1,039
Total%	29.24	70.76	100.00	29.24	70.76	55.57	5.84	63.46	6.39
Total18+	2,982	8,318	11,300	2,982	8,318	6,642	619	7,410	644
Total18+%	26.39	73.61	100.00	26.39	73.61	58.78	5.48	65.58	5.70

District Statistical Report

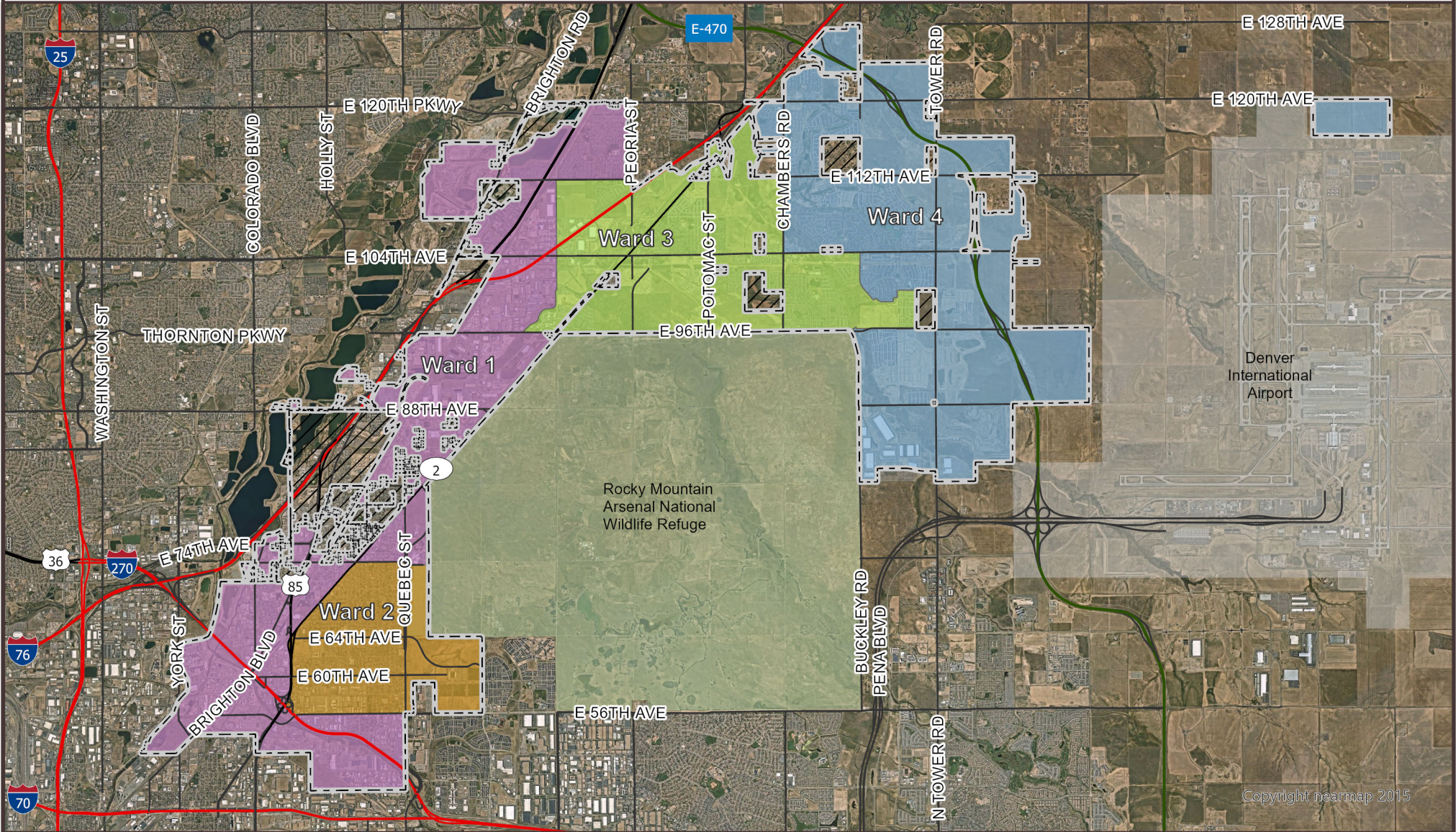
Ward No.	TOTAL Population	Target Population	Target Deviation	Target Deviation (%)	Total	Hispanic	Non-Hispanic	Non-Hispanic white	Non-Hispanic black	White	Black
1	15,226	15,605	-379	-2.43	15,226	8,335	6,891	5,532	418	7,483	491
					24.39%	54.74%	45.26%	36.33%	2.75%	49.15%	3.22%
2	15,658	15,605	53	0.34	15,658	11,308	4,350	3,309	579	5,717	662
					25.09%	72.22%	27.78%	21.13%	3.70%	36.51%	4.23%
3	15,281	15,605	-324	-2.08	15,281	6,109	9,172	6,962	866	8,535	967
					24.48%	39.98%	60.02%	45.56%	5.67%	55.85%	6.33%
4	16,253	15,605	648	4.15	16,253	4,753	11,500	9,032	949	10,314	1,039
					26.04%	29.24%	70.76%	55.57%	5.84%	63.46%	6.39%

District Compactness Report

District	Polygon Area (sq. mi)	Perimeter (mi)	Reock	Area/Convex Hull	Grofman	Schwartzberg	Polsby Popper	Holes
Unassigned	0	0	0	0	0	0	0	0
1	12.26	78.44	0.14	0.36	22.4	6.32	0.03	28
2	3.81	9.38	0.59	0.88	4.8	1.35	0.54	0
3	7.49	26.2	0.35	0.73	9.57	2.7	0.14	8
4	12.88	37.8	0.2	0.4	10.53	2.97	0.11	6

Commerce City Wards

Plan B



Copyright nearmap 2015

0 1 2 4 Miles

Coordinate System: NAD 1983 HARN
State Plane Colorado Central FIPS 0502 ft

Ward

- Ward 1
- Ward 2
- Ward 3
- Ward 4

- Commerce City Boundary
- Enclave

DISCLAIMER:

This product was produced by the Commerce City GIS Division. Commerce City has made every effort to produce data as accurately as possible. Maps are general representations and are produced for general representation only. This map may contain information that is no longer current. Use of this information is the sole responsibility of the user. Commerce City shall assume no liability for any errors, omissions, or inaccuracies in the information provided on the map.

Date Created: 3/1/2023

