

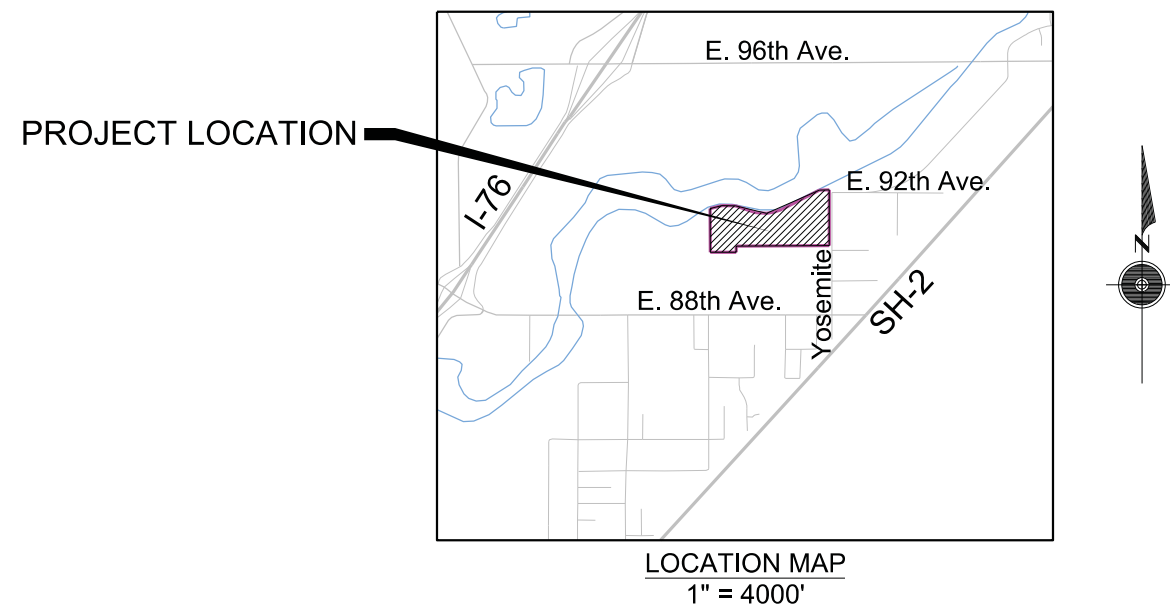
BNSF RAILWAY COMPANY



IRONDALE AUTOMOTIVE STAGING FACILITY EXPANSION

LOCATED IN THE SOUTHEAST QUARTER SECTION 21, TOWNSHIP 2 SOUTH, RANGE 67 WEST, 6TH PRINCIPAL MERIDIAN
9101 YOSEMITE, IRONDALE, CO 80640

INDEX OF SHEETS	
SHEET NO.	DRAWING TITLE
1	TITLE / INDEX OF SHEETS
2	COMMERCE CITY NOTES
3	EXISTING SITE PLAN
4	PROPOSED SITE PLAN
5	DRAINAGE PLAN
6	RETENTION BASIN PLAN
7	UTILITY PLAN
8	GUARDHOUSE AND GATE ARRANGEMENT
9	GUARDHOUSE DETAILS
10	TRASH ENCLOSURE ELEVATION PLAN
11-12	FENCE DETAILS
13	BARRIER DETAILS
14-19	LANDSCAPE PLANS
20-24	LIGHTING PLANS



OWNER/APPLICANT

BNSF RAILWAY COMPANY
2650 LOU MENK DRIVE MOB-1
FORT WORTH, TX 76131

PROJECT ENGINEER

AECOM TECHNICAL SERVICES, INC.
717 17TH STREET SUITE 2600
DENVER, CO 80202
(303)228-3000

SURVEYOR

105 WEST INCORPORATED
2140 SOUTH IVANHOE STREET SUITE G5
DENVER, CO 80222
(303)918-2496

ELECTRICAL ENGINEER

SSG MEP, INC.
3025 SOUTH PARKER ROAD SUITE 1100
AURORA, CO 80114
(303)696-2602

BASIS OF BEARINGS

BEARINGS ARE BASED ON THE EAST LINE OF THE SOUTHEAST QUARTER OF SECTION 21, TOWNSHIP 2 SOUTH, RANGE 67 WEST, OF THE 6TH PRINCIPAL MERIDIAN AS MONUMENTED BY A FOUND 3-1/4" ALUMINUM CAP IN RANGE BOX "LS 38046 2008" AT THE EAST QUARTER CORNER OF SAID SECTION 21 AND A FOUND 3-1/4" ALUMINUM CAP IN A RANGE BOX AT THE SOUTHEAST CORNER OF SAID SECTION 21, SAID LINE BEARS S00 03'01"E.

BENCHMARK & HORIZONTAL DATUM

BASIS OF ELEVATIONS: PROJECT ELEVATIONS ARE BASE ON BENCH MARK M 402, PID: KK1300, A STAINLESS STEEL ROD IN LOGO BOX, WITH AN NAVD 88 ELEVATION OF 5114.74FT. M 402 IS A NGS FIRST ORDER BENCHMARK.
COORDINATE DATUM: HORIZONTAL COORDINATES ARE BASE ON COMMERCE CITY CONTROL DIAGRAM RECORDED IN BOOK 1, PAGE 3776 ADAMS COUNTY RECORDS. ALL COORDINATES ARE MODIFIED COLORADO STATE PLANE CENTRAL ZONE NAD 1983(92). TO OBTAIN GRID DISTANCES USE COMBINED FACTOR X=0.99979199.

CITY COUNCIL CERTIFICATE:
APPROVED BY THE CITY COUNCIL
OF THE CITY OF COMMERCE CITY
THIS ___ DAY OF _____,
A.D. _____

CITY SIGNATURE

DATE OF PREPARATION:
MAY 14, 2012

SUBSEQUENT RESUBMITTAL:
JULY 25, 2012

ASSESSOR'S PIN:
172121401002, 172121005015,
AND 172121005018

L:\0834\000_CAD\100_Development_Plan\Sheets\CC_GENNOTES_01.DGN
 BNSF_PEN_01011.tbl
 BY: USTIN_USERNAMENSF_PDF_01011.plt:cq
 TIME: 1:25:28 PM
 7/23/2012

COMMERCE CITY NOTES:

1. IN THE INTEREST OF COMPATIBILITY OF SURROUNDING LAND USES, ILLUMINATION OF ANY KIND ON PRIVATE PROPERTY SHALL BE DIRECTED AND CONTROLLED IN SUCH A MANNER SO THAT THERE SHALL BE NO DIRECT RAYS OF LIGHT WHICH EXTEND BEYOND THE BOUNDARIES OF THE PROPERTY FROM WHICH IT ORIGINATES.
2. TRASH ENCLOSURES SHALL BE CONSTRUCTED TO A MINIMUM HEIGHT OF SIX (6) FEET AND OF THE SAME OR COMPLEMENTARY MATERIAL AND COLOR AS THE MAIN BUILDING.
3. ROOF MOUNTED ELECTRICAL AND MECHANICAL EQUIPMENT SHALL BE PLACED OR SCREENED SUCH THAT THE EQUIPMENT IS NOT VISIBLE FROM ANY POINT. SUCH EQUIPMENT SHALL BE SCREENED WITH THE SAME MATERIALS AND COLORS AS THE MAIN BUILDING.
4. APPROVAL OF A SIGN PERMIT IS REQUIRED IN ADDITION TO DEVELOPMENT PLAN APPROVAL. SIGN LOCATIONS SHOWN ON THE DEVELOPMENT PLAN WILL BE REVIEWED FOR POSSIBLE CONFLICTS WITH SIGHT TRIANGLES AND EASEMENTS. HOWEVER, THESE SIGNS WILL NOT BE APPROVED BY THE DEVELOPMENT PLAN REVIEW PROCESS OR APPROVAL OF THIS DEVELOPMENT PLAN. ALL SIGNS MUST CONFORM TO THE CITY OF COMMERCE CITY'S SIGN CODE.
5. APPROVAL OF A FENCE PERMIT IS REQUIRED IN ADDITION TO DEVELOPMENT PLAN APPROVAL. ALL FENCES MUST CONFORM TO THE CITY OF COMMERCE CITY'S FENCING REQUIREMENTS.
6. NO ROOF DOWNSPOUT OUTFALLS WILL BE ALLOWED TO DRAIN OVER SIDEWALKS, BIKE PATHS, OR ANY OTHER PEDESTRIAN ROUTE.
7. THE APPLICANT HAS THE OBLIGATION TO COMPLY WITH ALL APPLICABLE REQUIREMENTS OF THE AMERICAN DISABILITIES ACT. APPROVAL OF THIS DEVELOPMENT PLAN DOES NOT CONSTITUTE COMPLIANCE WITH THIS ACT.
8. THE APPROVAL OF THIS DEVELOPMENT PLAN DOES NOT CONSTITUTE FINAL APPROVAL OF GRADING, DRAINAGE, UTILITY, PUBLIC IMPROVEMENTS, AND BUILDING PLANS. THESE PLANS MUST BE REVIEWED AND APPROVED BY THE APPROPRIATE AGENCY PRIOR TO THE ISSUANCE OF BUILDING PERMITS.
9. ALL OVERHEAD UTILITIES SERVING THE SITE MUST BE PLACED UNDERGROUND PER LAND DEVELOPMENT CODE.
10. NO VEHICLE ACCESS, PARKING, OR USE OF ANY KIND IS ALLOWED ON THIS LOT UNTIL A DEVELOPMENT PLAN IS APPROVED BY THE CITY.




CITY COUNCIL CERTIFICATE:
 APPROVED BY THE CITY COUNCIL
 OF THE CITY OF COMMERCE CITY
 THIS ____ DAY OF _____,
 A.D. _____

 CITY SIGNATURE

DATE OF PREPARATION:
 MAY 14, 2012

SUBSEQUENT RESUBMITTAL:
 JULY 25, 2012

ASSESSOR'S PIN:
 172121401002, 172121005015,
 AND 172121005018

BNSF Railway Company 9101 Yosemite Irondale, CO 80640 	REV	DATE	DESCRIPTION	DESIGNED CHECKED DRAWN APPROVED PROJECT DATE 07/25/2012	COLORADO DIVISION BRUSH SUBDIVISION LINE SEGMENT 2																							
	AECOM USA, Inc. 717 Seventeenth Street, Suite 2600 Denver, CO 80202 T 303.228.3000 F 303.228.3001 www.aecom.com 										REVISIONS <table border="1"> <thead> <tr> <th>NO.</th> <th>DESCRIPTION</th> <th>DATE</th> <th>BY</th> </tr> </thead> <tbody> <tr><td> </td><td> </td><td> </td><td> </td></tr> <tr><td> </td><td> </td><td> </td><td> </td></tr> <tr><td> </td><td> </td><td> </td><td> </td></tr> <tr><td> </td><td> </td><td> </td><td> </td></tr> </tbody> </table>			NO.	DESCRIPTION	DATE	BY											
NO.	DESCRIPTION	DATE	BY																									
DRAWN CHECKED	BNSF RAILWAY COMPANY - ENGINEERING SERVICES			PROTRAK SEQ NO STATUS DEV. PLAN	FILE: CC_GENNOTES_01.DGN	SHEET 2	DATE: 07/25/2012																					

SUMMARY OF PROJECT STATISTICS:

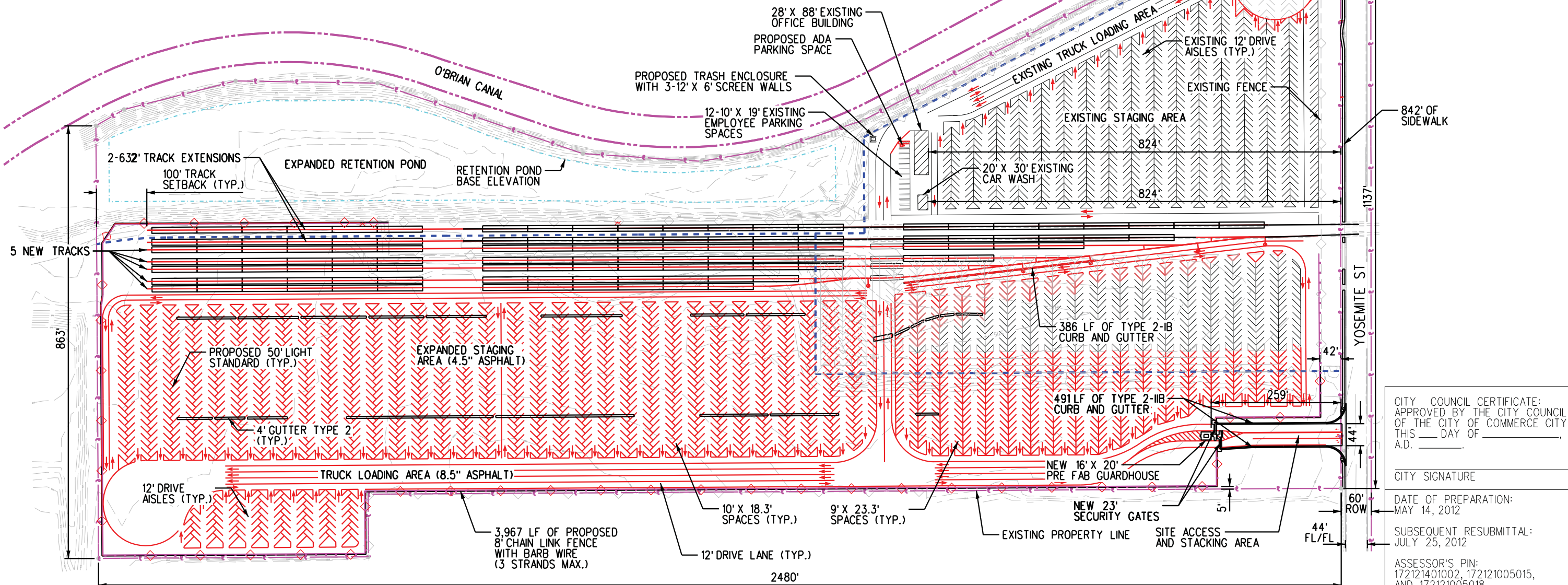
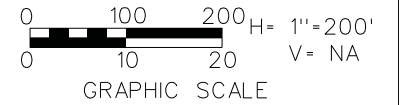
GROSS ACERAGE	49 AC	PROPOSED TRACK CAPACITY	115 CARS
EXISTING BUILDINGS	3,244 SF	PROPOSED STAGING PARKING CAPACITY	3,192 SPACES
PROPOSED BUILDINGS	320 SF	PROPOSED TRUCK LOADING CAPACITY	36 SPACES
TOTAL BUILDING AREA	3,564 SF	ESTIMATED NO. OF EMPLOYEES	8 EMPLOYEES
TYPE OF BUILDING CONSTRUCTION	PREFABRICATED	EMPLOYEE PARKING SPACES REQUIRED	13 SPACES
LANDSCAPE AREA	274,110 SF	EMPLOYEE PARKING SPACES PROVIDED	13 SPACES
CURRENT ZONING	11 & 13	ADA PARKING SPACES REQUIRED	1 SPACE
REQUESTED ZONING	13	ADA PARKING SPACES PROVIDED	1 SPACE

NOTES:

1. CURRENT STAGING AREA IS ZONED AS I3. UNDEVELOPED PROPERTY IS ZONED AS I1. REZONING TO I3 IS CURRENTLY BEING REQUESTED FOR ENTIRE PROPERTY.
2. THIS PROPERTY WILL BE USED AS A AUTOMOBILE STAGING FACILITY AND THEREFORE WILL NOT NEED TO MEET THE STANDARD PARKING STALL DIMENSIONS OF 9' X 19' FOR ALL AREAS THAT ARE USED FOR STAGING PURPOSES.
3. IF ANY OUTDOOR STORAGE WILL EXIST ON SITE, IT WILL BE SCREENED IN ACCORDANCE WITH THE LAND DEVELOPMENT CODE.
4. EXISTING SITE ACCESS TO REMAIN FOR POTENTIAL USE AS EMERGENCY ACCESS/EGRESS.
5. TYPE 2-1B AND TYPE 2-1B CURB AND GUTTER PER COMMERCE CITY DETAIL 300-21.

EXISTING SITE ACCESS (FOR EMERGENCY USE ONLY)

EXISTING 12' X 15' GUARDHOUSE TO REMAIN



CITY COUNCIL CERTIFICATE:
APPROVED BY THE CITY COUNCIL
OF THE CITY OF COMMERCE CITY
THIS ____ DAY OF _____,
A.D. _____

CITY SIGNATURE _____

DATE OF PREPARATION:
MAY 14, 2012

SUBSEQUENT RESUBMITTAL:
JULY 25, 2012

ASSESSOR'S PIN:
172121401002, 172121005015,
AND 172121005018

L:\0834\000_CAD\100_Development_Plan_Sheets\CC_SP_01.DGN
BNSF_PEN_01011.tbl
BY: USTN\USER\BNSF_PDF_01011.plt:cjg
TIME: 1:31:03 PM
7/23/2012

BNSF Railway Company
9101 Yosemite
Irondale, CO 80640

AECOM USA, Inc.
717 Seventeenth Street, Suite 2600
Denver, CO 80202
T 303.228.3000 F 303.228.3001 www.aecom.com

REV	DATE	DESCRIPTION

DESIGNED _____
CHECKED _____
DRAWN _____
APPROVED _____
PROJECT _____
DATE 07/25/2012
PROTRAK SEQ NO _____ STATUS DEV. PLAN

**COLORADO DIVISION
BRUSH SUBDIVISION
LINE SEGMENT 2**

REVISIONS			
NO.	DESCRIPTION	DATE	BY

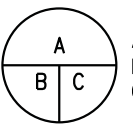
BNSF RAILWAY


**BNSF IRONDALE AUTOMOTIVE
STAGING FACILITY
PROPOSED SITE PLAN**

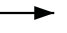
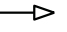
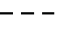
FILE: CC_SP_01.DGN SHEET 4 DATE: 07/25/2012

BNSF RAILWAY COMPANY - ENGINEERING SERVICES

LEGEND


 A - BASIN DESIGNATION
 B - AREA IN ACRES
 C - COMPOSITE RUNOFF COEFFICIENTS

 D - DESIGN POINT DESIGNATION

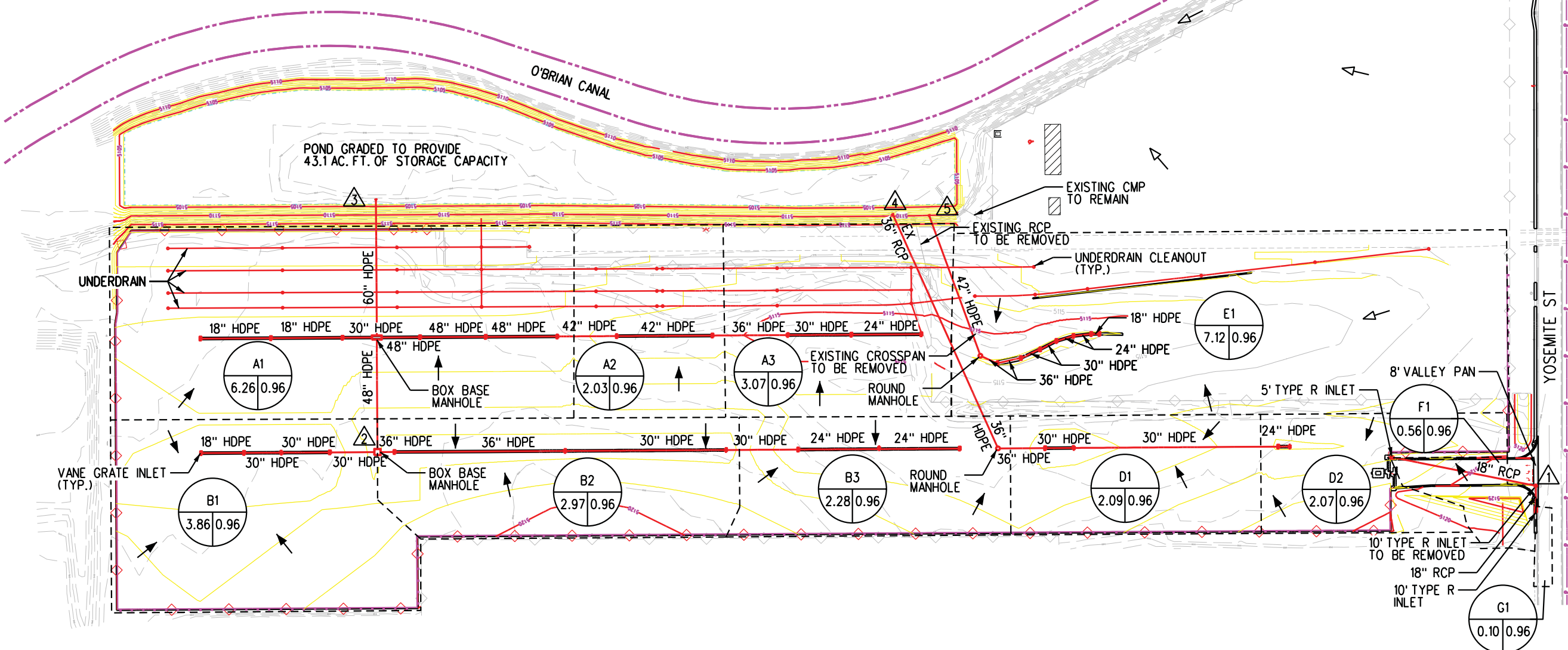
 PROPOSED FLOW DIRECTION
 EXISTING FLOW DIRECTION
 SUB-BASIN DRAINAGE AREA

Summary Runoff Table				
Design Point	Basins	Area (ac)	50-Yr Peak (cfs)	100-Yr Peak (cfs)
1	F1, G1	0.7	4.9	5.7
2	B1, B2, B3	9.1	67.5	78.8
3	A1, A2, A3, B1, B2, B3	20.5	151.6	176.9
4	D1, D2	4.2	30.8	36.0
5	E1	7.1	52.8	61.5

- NOTES:**
- VANE GRATE INLETS TO HAVE FULL CONCRETE APRON. SEE DETAIL AND CDOT M-604-25.
 - NORTHING AND EASTING MEASUREMENTS FOR VANE GRATE INLETS AND MANHOLES TAKEN FROM CENTER OF STRUCTURE.
 - HDPE PIPE TO BE ADS N-12 ST 1B, DUAL WALL HDPE PIPE OR EQUIVALENT. SEE MANUFACTURER SPECIFICATIONS FOR INSTALLATION DETAILS.



0 100 200 H= 1"=200'
0 10 20 V= NA
GRAPHIC SCALE



CITY COUNCIL CERTIFICATE:
 APPROVED BY THE CITY COUNCIL
 OF THE CITY OF COMMERCE CITY
 THIS ___ DAY OF _____,
 A.D. _____

CITY SIGNATURE _____

DATE OF PREPARATION:
 MAY 14, 2012

SUBSEQUENT RESUBMITTAL:
 JULY 25, 2012

ASSESSOR'S PIN:
 172121401002, 172121005015,
 AND 172121005018

L:\0834\000_CAD\100_Development_Plans\Sheets\CC_DPLDRN_01.DGN
 BNSF_PEN_01011.tbl
 BY: _USTN_USER\BNSF_PDF_01011.plt/cfg
 TIME: 9:32:08 AM
 7/27/2012

BNSF Railway Company
 9101 Yosemite
 Irondale, CO 80640

AECOM USA, Inc.
 717 Seventeenth Street, Suite 2600
 Denver, CO 80202
 T 303.228.3000 F 303.228.3001 www.aecom.com

REV	DATE	DESCRIPTION

BNSF RAILWAY COMPANY - ENGINEERING SERVICES

DESIGNED
 CHECKED
 DRAWN
 APPROVED
 PROJECT
 DATE 07/25/2012

PROTRAK SEQ NO _____ STATUS DEV. PLAN

**COLORADO DIVISION
 BRUSH SUBDIVISION
 LINE SEGMENT 2**

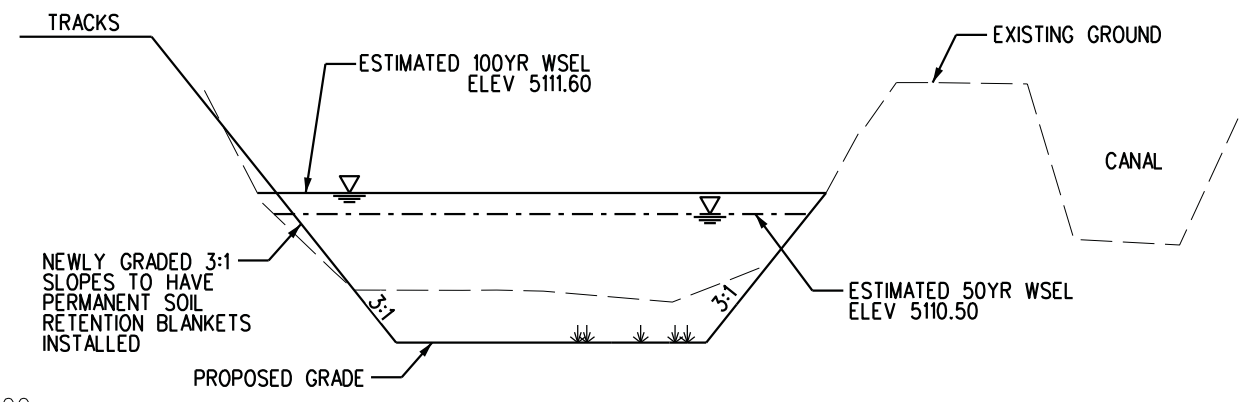
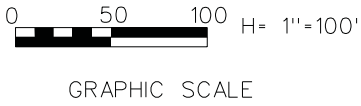
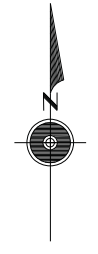
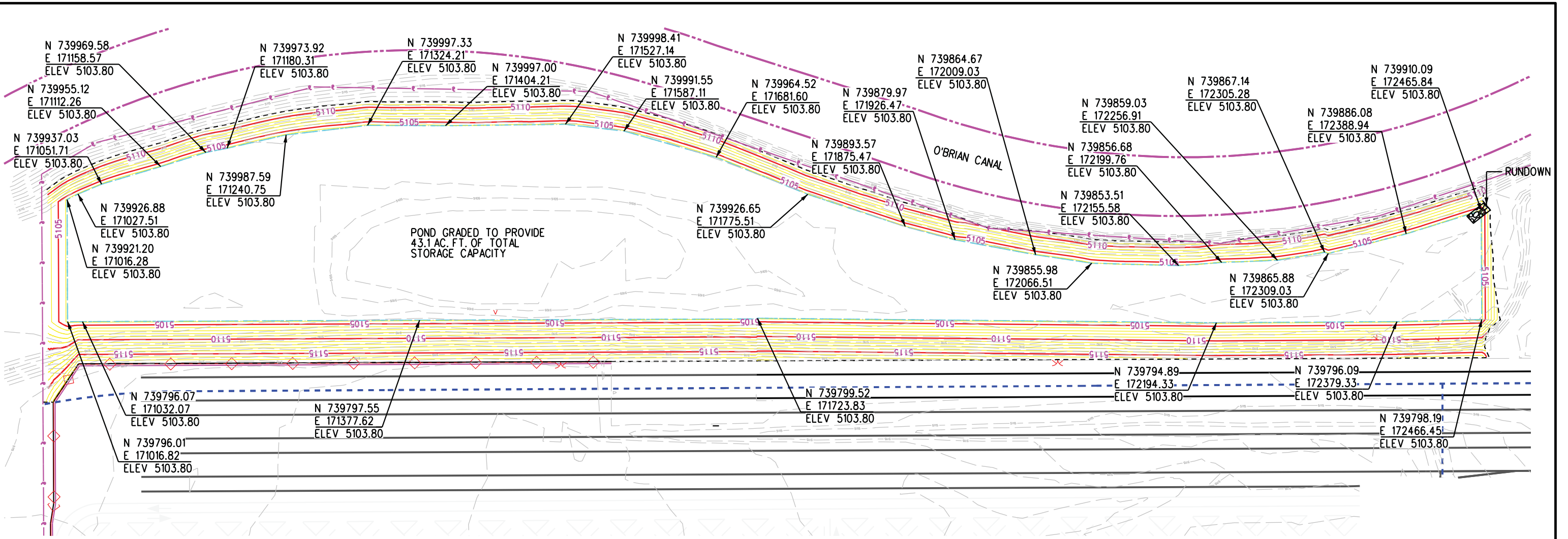
REVISIONS			
NO.	DESCRIPTION	DATE	BY

BNSF RAILWAY

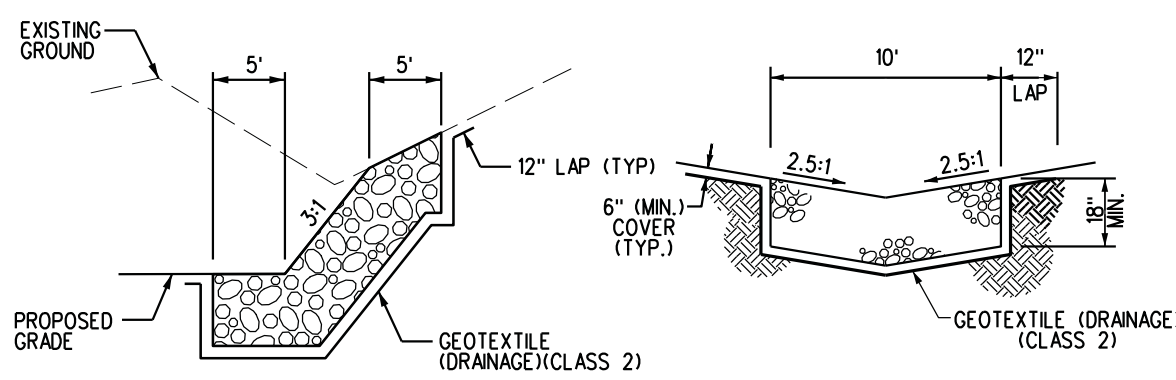
**BNSF IRONDALE AUTOMOTIVE
 STAGING FACILITY
 DRAINAGE PLAN**

FILE: CC_DPLDRN_01.DGN SHEET 5 DATE: 07/25/2012

L:\0834\000_CAD\100_Development_Plan\Sheets\CC_RetGrd_01.DGN
BNSF_PEN_01011.tbl
BY: USTN\USER\BNSF_PDF_01011.plt/cg
TIME: 9:33:33 AM
7/27/2012



TYPICAL RETENTION BASIN DETAIL
N.T.S.



TYPICAL RUNDOWN DETAIL AND SECTION
N.T.S.

CITY COUNCIL CERTIFICATE:
APPROVED BY THE CITY COUNCIL
OF THE CITY OF COMMERCE CITY
THIS ___ DAY OF _____,
A.D. _____

CITY SIGNATURE _____

DATE OF PREPARATION:
MAY 14, 2012

SUBSEQUENT RESUBMITTAL:
JULY 25, 2012

ASSESSOR'S PIN:
17212401002, 172121005015,
AND 172121005018

BNSF Railway Company
9101 Yosemite
Irondale, CO 80640

AECOM USA, Inc.
717 Seventeenth Street, Suite 2600
Denver, CO 80202
T 303.228.3000 F 303.228.3001 www.aecom.com

REV	DATE	DESCRIPTION

DESIGNED CDL
CHECKED XXX
DRAWN TCB
APPROVED
PROJECT
DATE 07/25/2012
PROTRAK SEQ NO
STATUS DEV. PLAN

**COLORADO DIVISION
BRUSH SUBDIVISION
LINE SEGMENT 2**

REVISIONS			
NO.	DESCRIPTION	DATE	BY

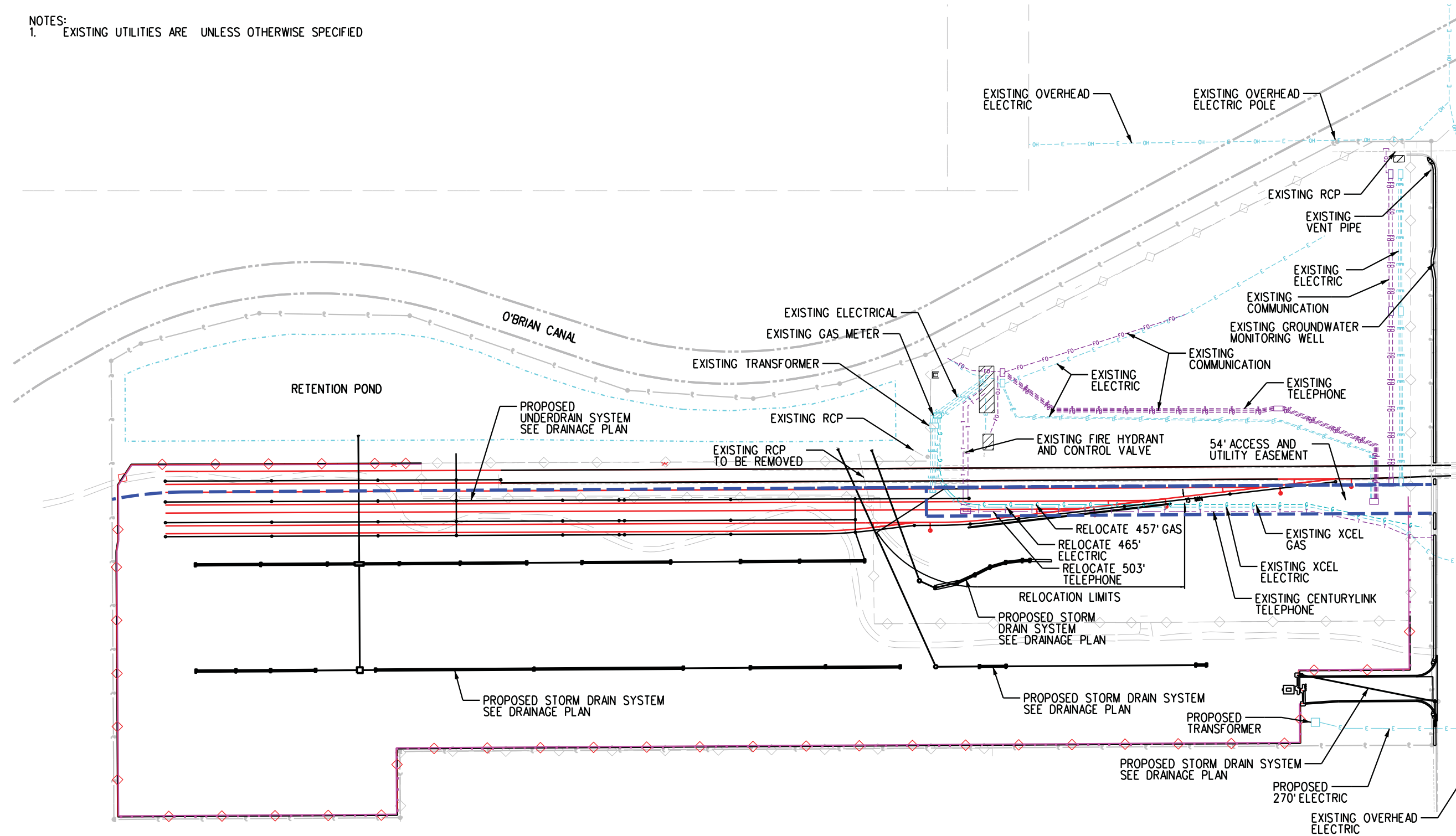
BNSF RAILWAY

**BNSF IRONDALE AUTOMOTIVE
STAGING FACILITY
RETENTION BASIN PLAN**

FILE: CC_RetGrd_01.DGN SHEET 6 DATE: 07/25/2012

BNSF RAILWAY COMPANY - ENGINEERING SERVICES

NOTES:
1. EXISTING UTILITIES ARE UNLESS OTHERWISE SPECIFIED



- LEGEND**
- - - - - TELEPHONE
 - - - - - FIBER OPTIC
 - - - - - ELECTRICAL (UNDERGROUND)
 - - - - - ELECTRICAL (OVERHEAD)
 - - - - - GAS

NOTES
1. ELECTRICAL SERVICE TO THE PROPOSED GUARDHOUSE TO BE UNDERGROUND.

CITY COUNCIL CERTIFICATE:
APPROVED BY THE CITY COUNCIL
OF THE CITY OF COMMERCE CITY
THIS ___ DAY OF _____,
A.D. _____

CITY SIGNATURE _____

DATE OF PREPARATION:
MAY 14, 2012

SUBSEQUENT RESUBMITTAL:
JULY 25, 2012

ASSESSOR'S PIN:
172121401002, 172121005015,
AND 172121005018

L:\0834\000_CAD\100_Development\Plan\Sheets\CC_UTIL_01.dgn
BNSF_PEN_01011.tbl
BY: USTIN USER\BNSF_PDF_01011.plt:cjg
TIME: 1:31:22 PM
7/23/2012

BNSF Railway Company
9101 Yosemite
Irondale, CO 80640

AECOM USA, Inc.
717 Seventeenth Street, Suite 2600
Denver, CO 80202
T 303.228.3000 F 303.228.3001 www.aecom.com

REV	DATE	DESCRIPTION

DESIGNED _____
CHECKED _____
DRAWN _____
APPROVED _____
PROJECT _____
DATE 07/25/2012

**COLORADO DIVISION
BRUSH SUBDIVISION
LINE SEGMENT 2**

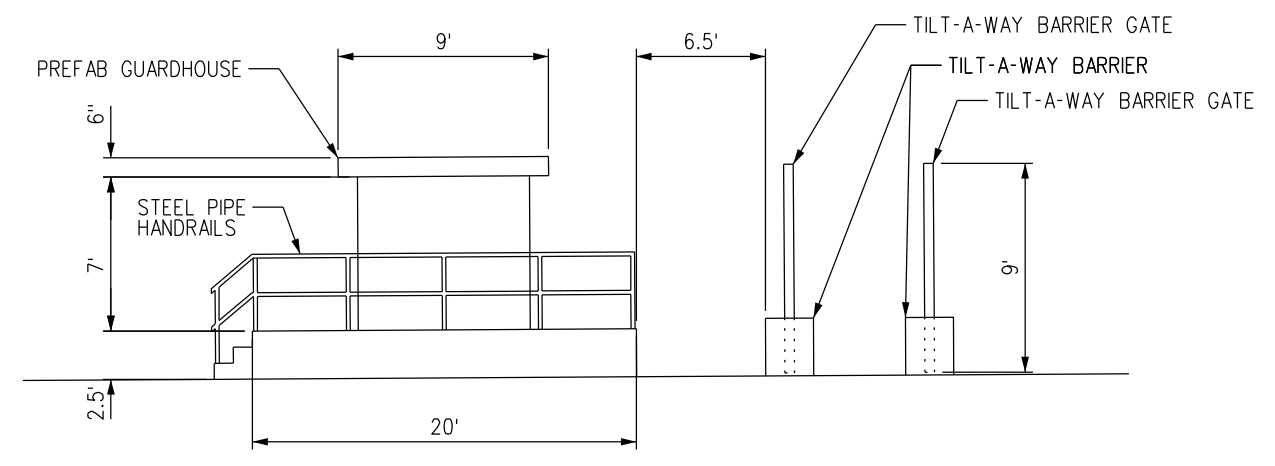
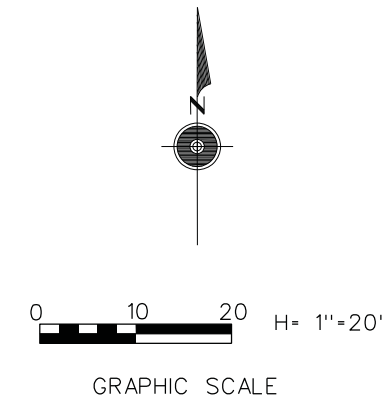
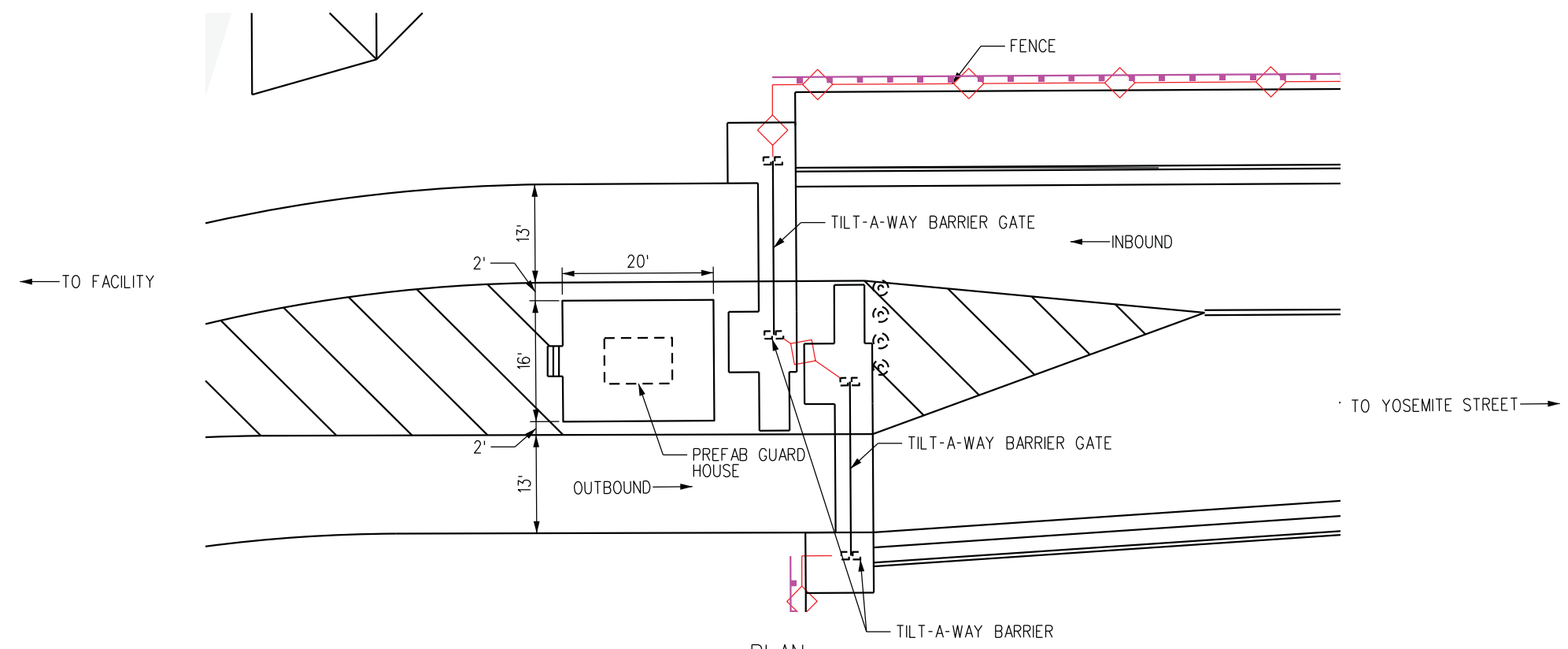
REVISIONS			
NO.	DESCRIPTION	DATE	BY

**BNSF IRONDALE AUTOMOTIVE
STAGING FACILITY
UTILITY PLAN**

PROTRAK SEQ NO _____ STATUS DEV. PLAN _____
DRAWN _____ CHECKED _____
BNSF RAILWAY COMPANY - ENGINEERING SERVICES

FILE: CC_UTIL_01.dgn SHEET 7 DATE: 07/25/2012

L:\0834\000_CAD\100_Development\Plan\Sheets\CC_HOUSE_dtl_01.dgn
 BNSF_PEN_01011.tbl
 BY: USTIN_USERNAMENSF_PDF_01011.plt.ctg
 TIME: 1:27:25 PM
 7/23/2012



SOUTH ELEVATION
 GUARDHOUSE AND ENTRANCE GATE
 NTS

NOTES:
 REFER TO SPECIFICATIONS FOR GUARD
 HOUSE AND GATE DETAILS.

CITY COUNCIL CERTIFICATE:
 APPROVED BY THE CITY COUNCIL
 OF THE CITY OF COMMERCE CITY
 THIS ___ DAY OF _____,
 A.D. _____

CITY SIGNATURE _____

DATE OF PREPARATION:
 MAY 14, 2012

SUBSEQUENT RESUBMITTAL:
 JULY 25, 2012

ASSESSOR'S PIN:
 172121401002, 172121005015,
 AND 172121005018

BNSF Railway Company 9101 Yosemite Irondale, CO 80640 	REV	DATE	DESCRIPTION	DESIGNED CHECKED DRAWN APPROVED PROJECT DATE 07/25/2012	COLORADO DIVISION BRUSH SUBDIVISION LINE SEGMENT 2																				
	AECOM USA, Inc. 717 Seventeenth Street, Suite 2600 Denver, CO 80202 T 303.228.3000 F 303.228.3001 www.aecom.com 						PROTRAK SEQ NO STATUS DEV. PLAN	REVISIONS <table border="1"> <thead> <tr> <th>NO.</th> <th>DESCRIPTION</th> <th>DATE</th> <th>BY</th> </tr> </thead> <tbody> <tr><td> </td><td> </td><td> </td><td> </td></tr> <tr><td> </td><td> </td><td> </td><td> </td></tr> <tr><td> </td><td> </td><td> </td><td> </td></tr> <tr><td> </td><td> </td><td> </td><td> </td></tr> </tbody> </table>	NO.	DESCRIPTION	DATE	BY													
NO.	DESCRIPTION	DATE	BY																						
DRAWN CHECKED	BNSF RAILWAY COMPANY - ENGINEERING SERVICES			FILE: CC_HOUSE_dtl_01.dgn	SHEET 8	DATE: 07/25/2012																			

TERMINAL ACCESS CONTROL



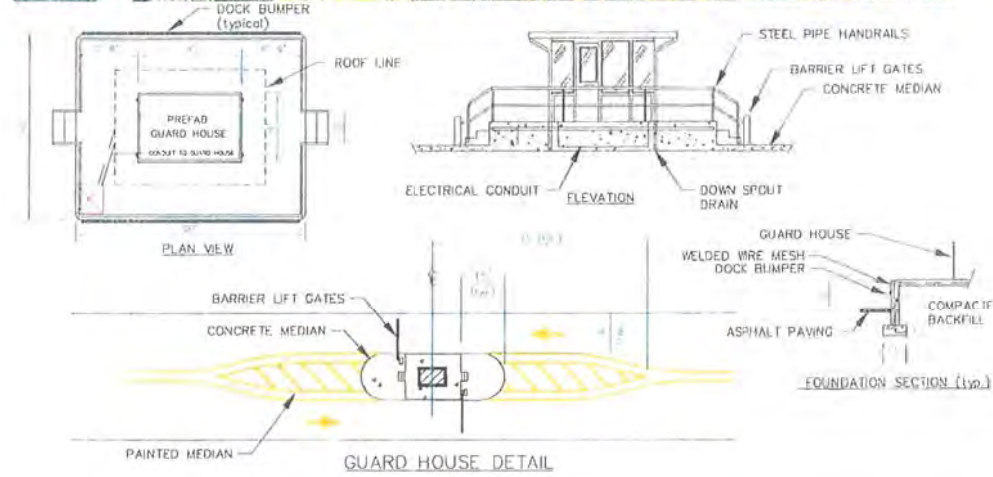
Rear view of the inspection booth



West view of the inspection booth



East view of the inspection booth



TRANSDEVELOPMENT

© COPYRIGHT TRANSDEVELOPMENT CORPORATION 1996

CITY COUNCIL CERTIFICATE:
 APPROVED BY THE CITY COUNCIL
 OF THE CITY OF COMMERCE CITY
 THIS ___ DAY OF _____,
 A.D. _____

CITY SIGNATURE _____

DATE OF PREPARATION:
 MAY 14, 2012

SUBSEQUENT RESUBMITTAL:
 JULY 25, 2012

ASSESSOR'S PIN:
 172121401002, 172121005015,
 AND 172121005018

L:\0834\000_CAD\100_Development Plan\Sheets\CC_Guardhouse_dtl_exh_02.dgn
 BNSF_PEN_010111.tbl
 BY: JUSTIN_USERNAMENSE_PDF_010111.plt
 TIME: 1:25:49 PM
 7/23/2012

BNSF Railway Company
 9101 Yosemite
 Irondale, CO 80640

AECOM USA, Inc.
 717 Seventeenth Street, Suite 2600
 Denver, CO 80202
 T 303.228.3000 F 303.228.3001 www.aecom.com

REV	DATE	DESCRIPTION

DESIGNED _____
 CHECKED _____
 DRAWN _____
 APPROVED _____
 PROJECT _____
 DATE 07/25/2012

**COLORADO DIVISION
 BRUSH SUBDIVISION
 LINE SEGMENT 2**

REVISIONS

NO.	DESCRIPTION	DATE	BY

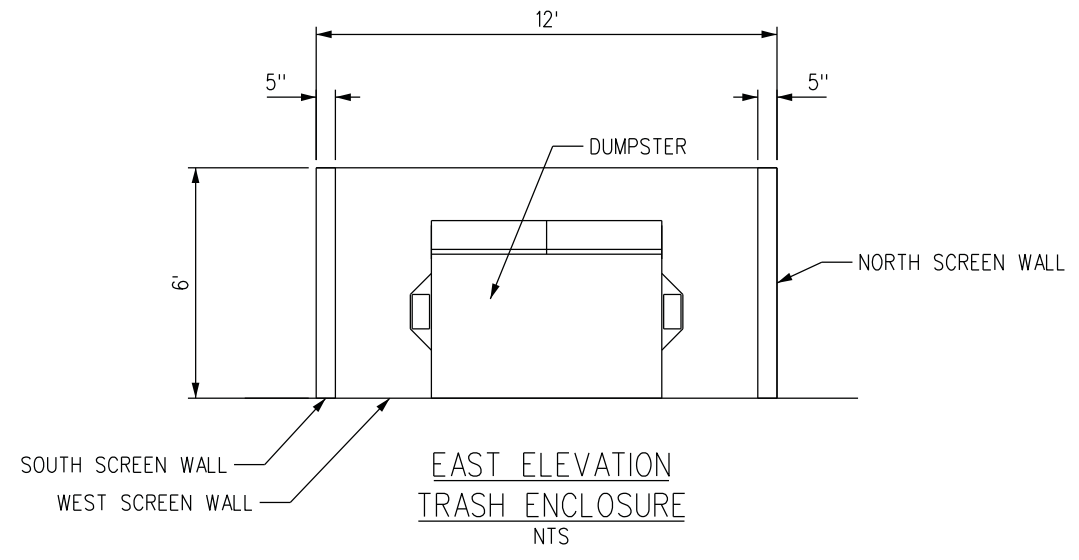
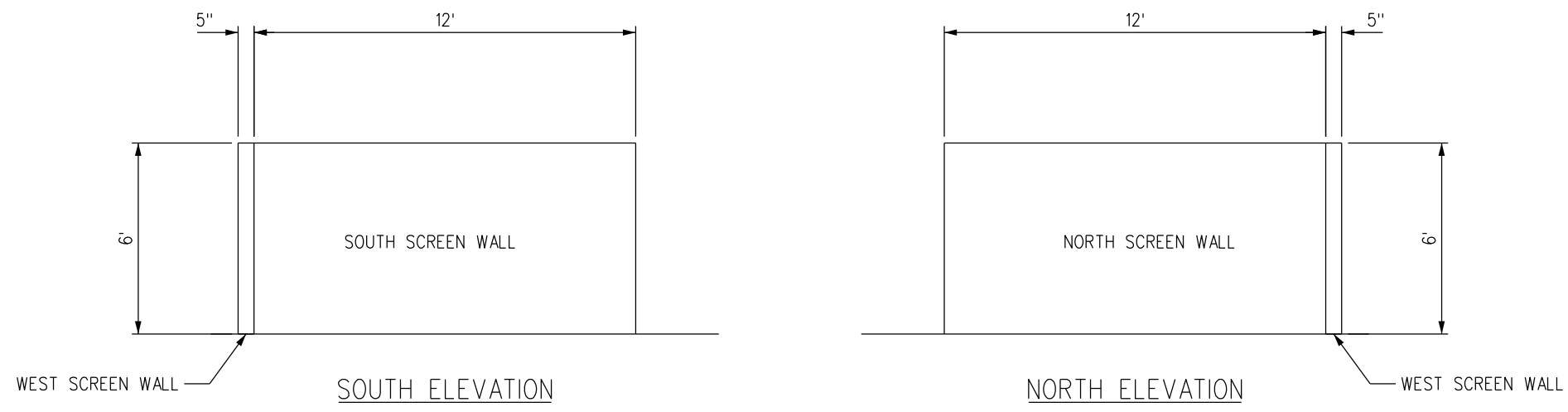
BNSF RAILWAY

**BNSF IRONDALE AUTOMOTIVE
 STAGING FACILITY
 GUARD HOUSE DETAILS**

BNSF RAILWAY COMPANY - ENGINEERING SERVICES

PROTRAK SEQ NO _____ STATUS *DEV. PLAN*

L:\0834\000_CAD\100_Development\Plan\Sheets\CC_ELEV_01.DGN
 BNSF_PEN_01011.tbl
 BY: USTIN_USERNAMENSF_PDF_01011.plt:cq
 TIME: 1:23:35 PM
 7/23/2012



CITY COUNCIL CERTIFICATE:
 APPROVED BY THE CITY COUNCIL
 OF THE CITY OF COMMERCE CITY
 THIS ___ DAY OF _____,
 A.D. _____

CITY SIGNATURE _____

DATE OF PREPARATION:
 MAY 14, 2012

SUBSEQUENT RESUBMITTAL:
 JULY 25, 2012

ASSESSOR'S PIN:
 172121401002, 172121005015,
 AND 172121005018

BNSF Railway Company
 9101 Yosemite
 Irondale, CO 80640

AECOM USA, Inc.
 717 Seventeenth Street, Suite 2600
 Denver, CO 80202
 T 303.228.3000 F 303.228.3001 www.aecom.com

REV	DATE	DESCRIPTION

DESIGNED _____
 CHECKED _____
 DRAWN _____
 APPROVED _____
 PROJECT _____
 DATE 07/25/2012

PROTRAK SEQ NO _____ STATUS DEV. PLAN

**COLORADO DIVISION
 BRUSH SUBDIVISION
 LINE SEGMENT 2**

REVISIONS			
NO.	DESCRIPTION	DATE	BY

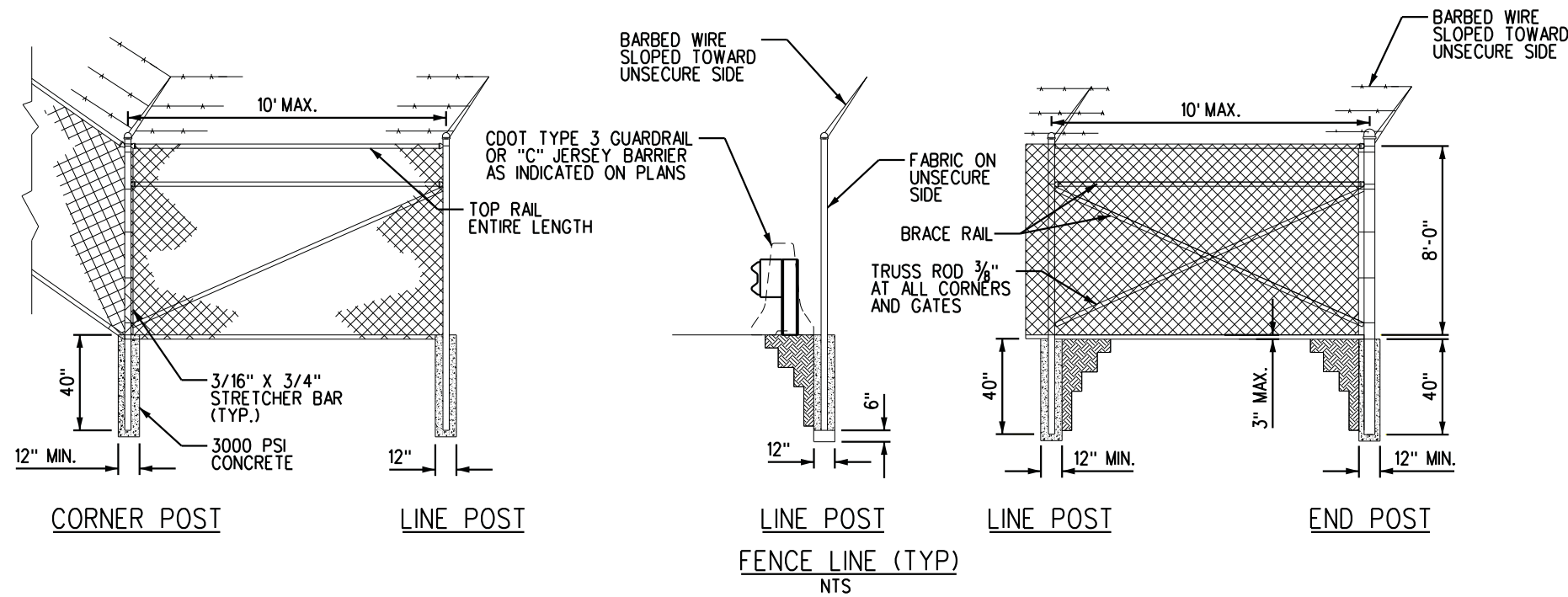
BNSF RAILWAY

**BNSF IRONDALE AUTOMOTIVE
 TRASH ENCLOSURE
 ELEVATION PLAN**

FILE: CC_ELEV_01.DGN SHEET 10 DATE: 07/25/2012

BNSF RAILWAY COMPANY - ENGINEERING SERVICES

L:\0834\000-CAD\100-Development\Plan\Sheets\CC_FENCE-dtl_01.dgn
 BNSF_PEN_01011.tbl
 BY: USTIN_USERNAMENSF_PDF_01011.plt:cjg
 TIME: 1:24:09 PM
 7/23/2012

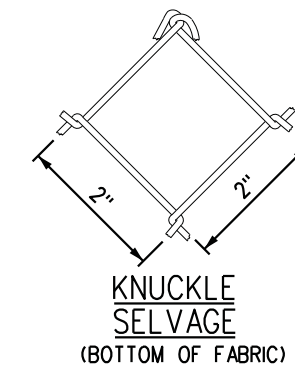
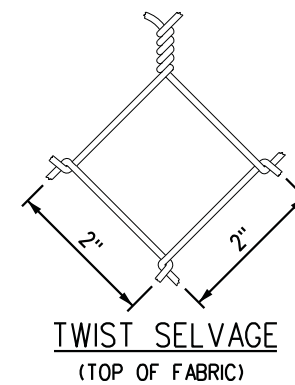
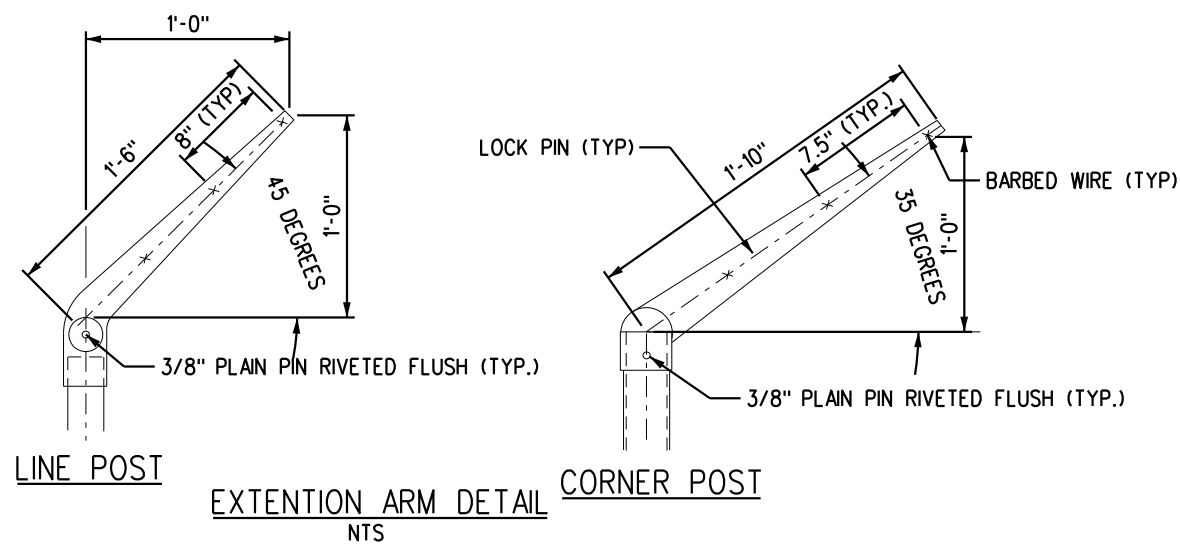


NOTES:

1. WIRE TIES, RAILS, POSTS, AND BRACES SHALL BE CONSTRUCTED ON THE SECURE SIDE OF THE FENCE ALIGNMENT. CHAIN-LINK FABRIC SHALL BE PLACED ON THE SIDE OPPOSITE THE SECURE AREA.
2. CHAIN LINK WIRE FABRIC SHALL BE SECURELY FASTENED TO ALL TERMINAL POSTS BY 3/16" x 3/4" TENSION BARS WITH HEAVY GAUGE PRESSED STEEL, SPACED 12" ± APART, TO THE LINE POST WITH 6 GAUGE WIRE CLIPS, SPACED 12" ± APART, AND TO THE TOP RAIL WITH 9 GAUGE TIE WIRES ON 24" ± CENTERS.
3. POST MAY BE ROLLED, FORMED OR TUBULAR IN CROSS SECTION AND SHALL BE IN ACCORDANCE WITH STRENGTH REQUIREMENTS OF METAL POSTS AND RAILS FOR INDUSTRIAL CHAIN LINK FENCE. ASTM DESIGNATION F 669. FITTINGS AND APPEARANCES SHALL BE IN ACCORDANCE WITH FENCE FITTINGS ASTM DESIGNATION F 626. ALL RAILS, BRACES, AND FITTINGS NOT GALVANIZED SHALL BE PAINTED WITH AN APPROVED ANTI-CORROSIVE PAINT.
4. NO FORM OF SCREENING WILL BE ADDED TO EXISTING OR PROPOSED FENCING THAT WILL HINDER VISIBILITY THROUGHOUT THE SITE.

FENCE MATERIAL		
FABRIC	POST DIAMETER I.D.	P.L.F.
HEIGHT 96" GAUGE 9	LINE POST 2"	3.65
	CORNER POST 2.5"	5.79
	END POST 2.5"	5.79
	TOP RAIL 1.25"	2.27
	BRACE RAIL 1.25"	2.27

TENSION WIRE 7 GAUGE
 BARBED WIRE 3 STRANDS, 3 BARB



CITY COUNCIL CERTIFICATE:
 APPROVED BY THE CITY COUNCIL
 OF THE CITY OF COMMERCE CITY
 THIS ___ DAY OF _____,
 A.D. _____

CITY SIGNATURE _____

DATE OF PREPARATION:
 MAY 14, 2012

SUBSEQUENT RESUBMITTAL:
 JULY 25, 2012

ASSESSOR'S PIN:
 172121401002, 172121005015,
 AND 172121005018

BNSF Railway Company
 9101 Yosemite
 Irondale, CO 80640

AECOM USA, Inc.
 717 Seventeenth Street, Suite 2600
 Denver, CO 80202
 T 303.228.3000 F 303.228.3001 www.aecom.com

REV	DATE	DESCRIPTION

DESIGNED
 CHECKED
 DRAWN
 APPROVED
 PROJECT
 DATE 07/25/2012

PROTRAK SEQ NO _____ STATUS DEV. PLAN

**COLORADO DIVISION
 BRUSH SUBDIVISION
 LINE SEGMENT 2**

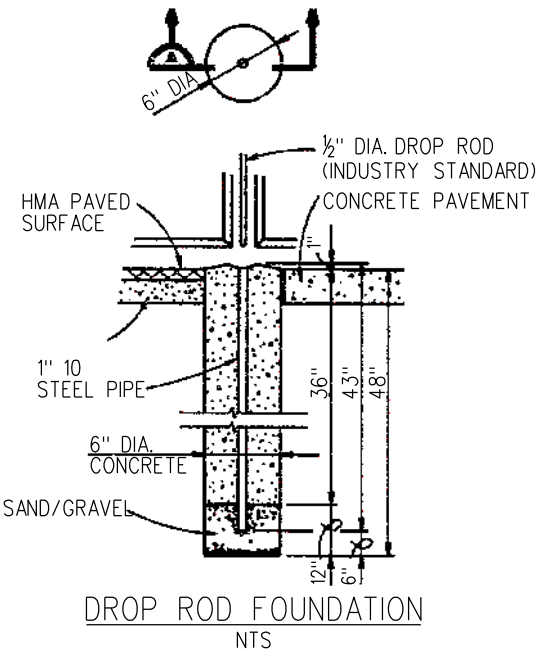
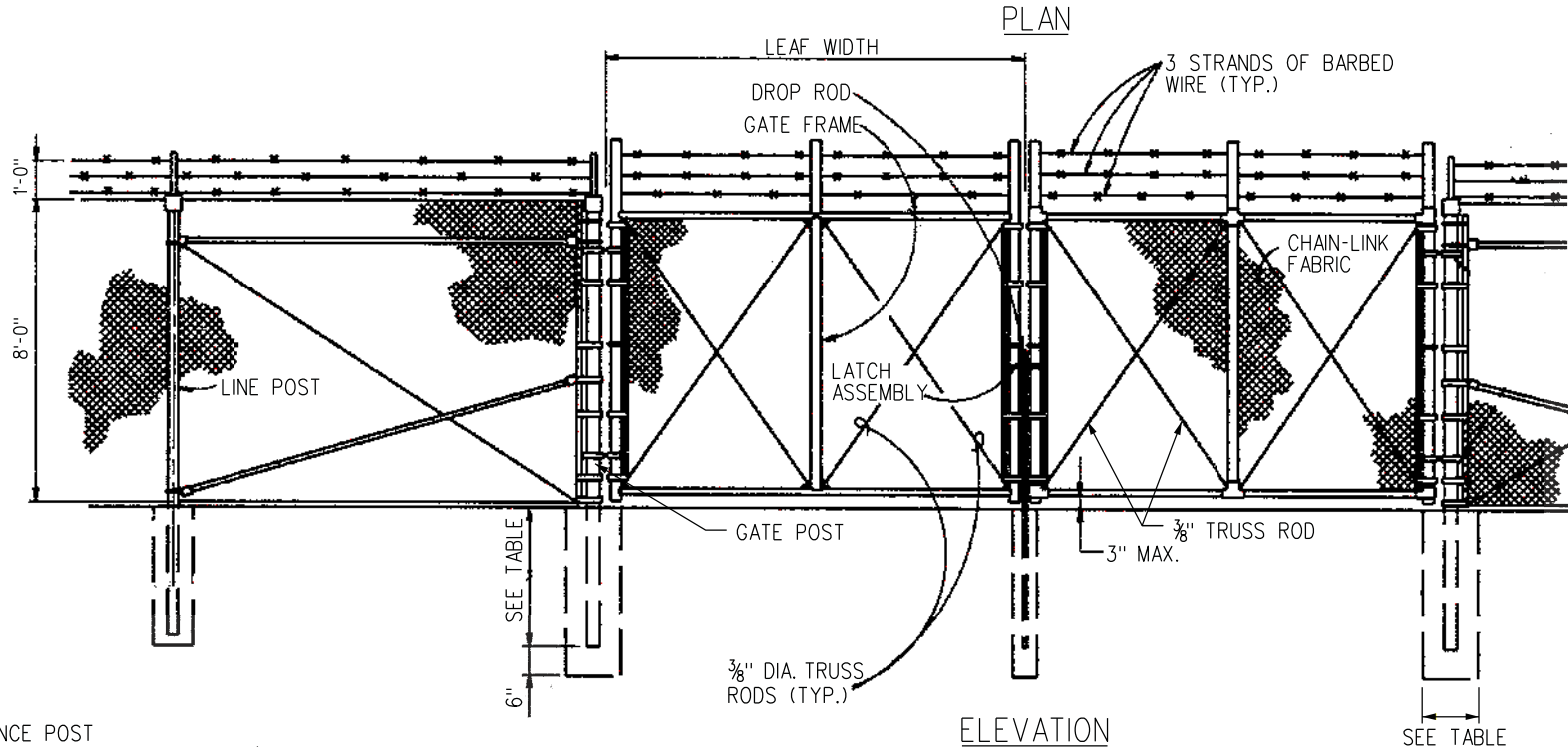
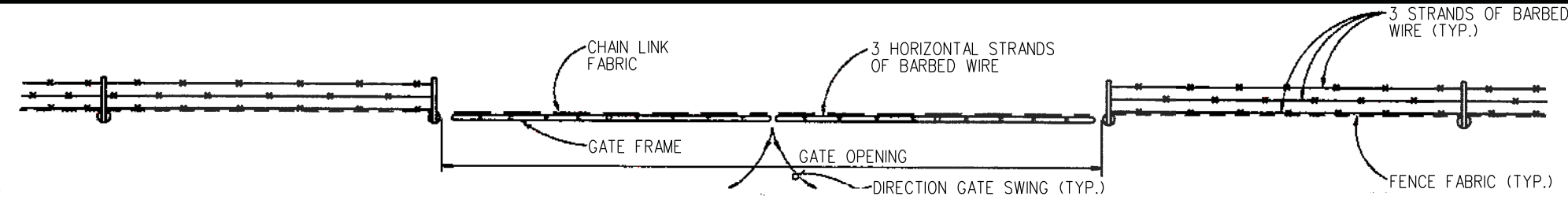
REVISIONS			
NO.	DESCRIPTION	DATE	BY

BNSF RAILWAY

**BNSF IRONDALE AUTOMOTIVE
 STAGING FACILITY
 FENCE DETAILS**

FILE: CC_FENCE-dtl_01.dgn SHEET 11 DATE: 07/25/2012

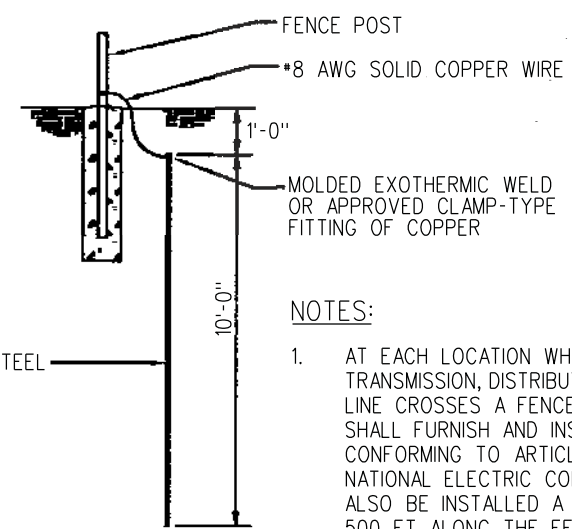
L:\0834\000-CAD\100-Development\Plan\Sheets\CC_FENCE-dtl_02.dgn
BNSF_PEN_01011.tbl
BY: _USTN_USERNAMENSF_PDF_01011.plt:cjg
TIME: 1:25:08 PM
7/23/2012



NOTES:

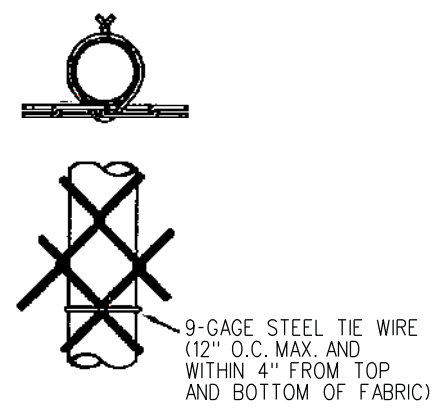
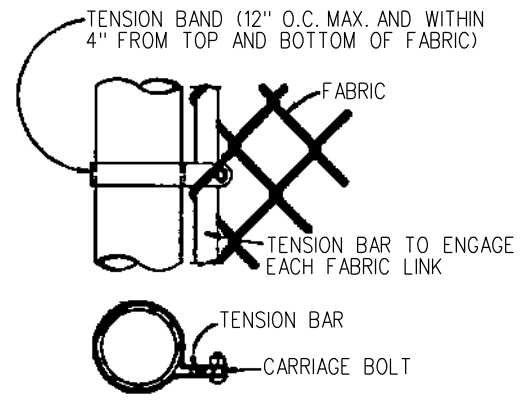
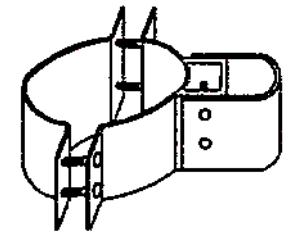
1. WIRE TIES, RAILS, POSTS, AND BRACES SHALL BE CONSTRUCTED ON THE SECURE SIDE OF THE FENCE ALIGNMENT. CHAIN-LINK FABRIC SHALL BE PLACED ON THE SIDE OPPOSITE THE SECURE AREA.

GATE MATERIALS				
GATE LEAF WIDTH	FRAME PIPE I.D.	GATE POST I.D.	CONCRETE BASE	
			DEPTH	DIA.
6'	1.5"	2.5"	40"	12"



NOTES:

1. AT EACH LOCATION WHERE AN ELECTRIC TRANSMISSION, DISTRIBUTION, OR SECONDARY LINE CROSSES A FENCE, THE CONTRACTOR SHALL FURNISH AND INSTALL A GROUND CONFORMING TO ARTICLE 250 OF THE NATIONAL ELECTRIC CODE. A GROUND SHALL ALSO BE INSTALLED A MAXIMUM OF EVERY 500 FT. ALONG THE FENCE. GROUNDING WILL NOT BE PAID FOR SEPARATELY BUT SHALL BE INCLUDED IN THE COST OF THE FENCE.



CITY COUNCIL CERTIFICATE:
APPROVED BY THE CITY COUNCIL
OF THE CITY OF COMMERCE CITY
THIS ____ DAY OF _____,
A.D. _____

CITY SIGNATURE _____

DATE OF PREPARATION:
MAY 14, 2012

SUBSEQUENT RESUBMITTAL:
JULY 25, 2012

ASSESSOR'S PIN:
172121401002, 172121005015,
AND 172121005018

BNSF Railway Company
9101 Yosemite
Irondale, CO 80640

AECOM USA, Inc.
717 Seventeenth Street, Suite 2600
Denver, CO 80202
T 303.228.3000 F 303.228.3001 www.aecom.com

REV	DATE	DESCRIPTION

DESIGNED _____
CHECKED _____
DRAWN _____
APPROVED _____
PROJECT _____
DATE 07/25/2012

PROTRAK SEQ NO _____ STATUS DEV. PLAN

**COLORADO DIVISION
BRUSH SUBDIVISION
LINE SEGMENT 2**

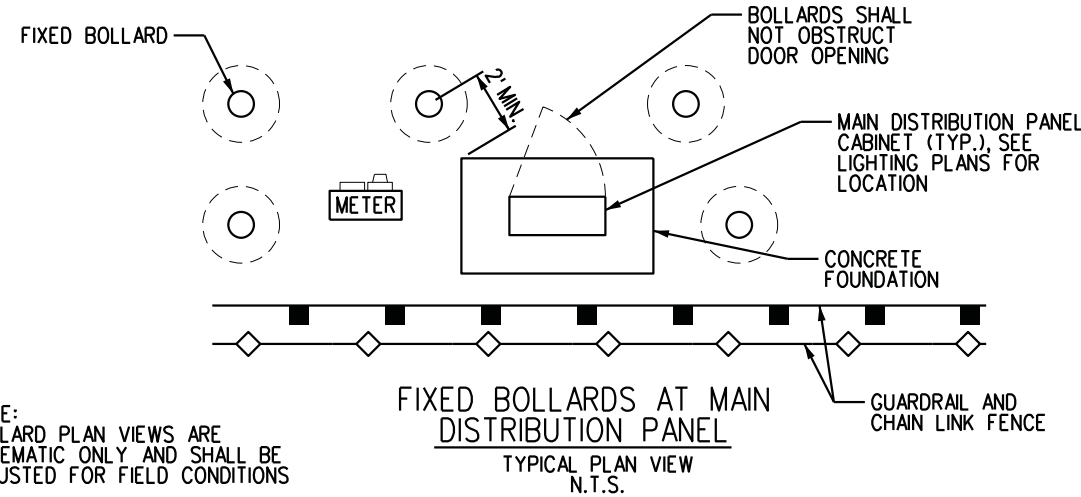
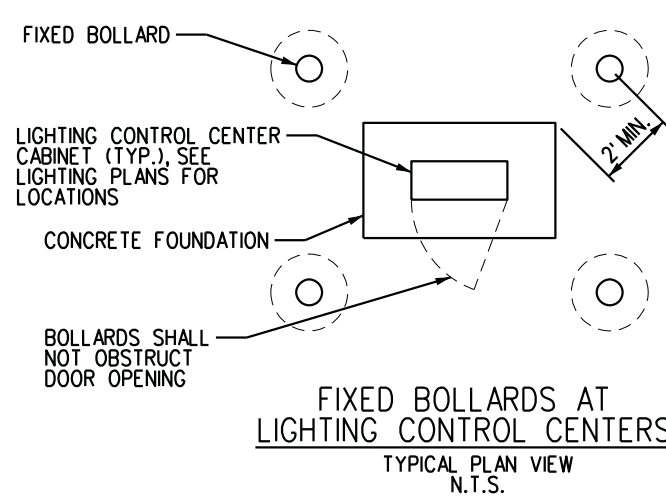
REVISIONS			
NO.	DESCRIPTION	DATE	BY

**BNSF IRONDALE AUTOMOTIVE
STAGING FACILITY
FENCE DETAILS**

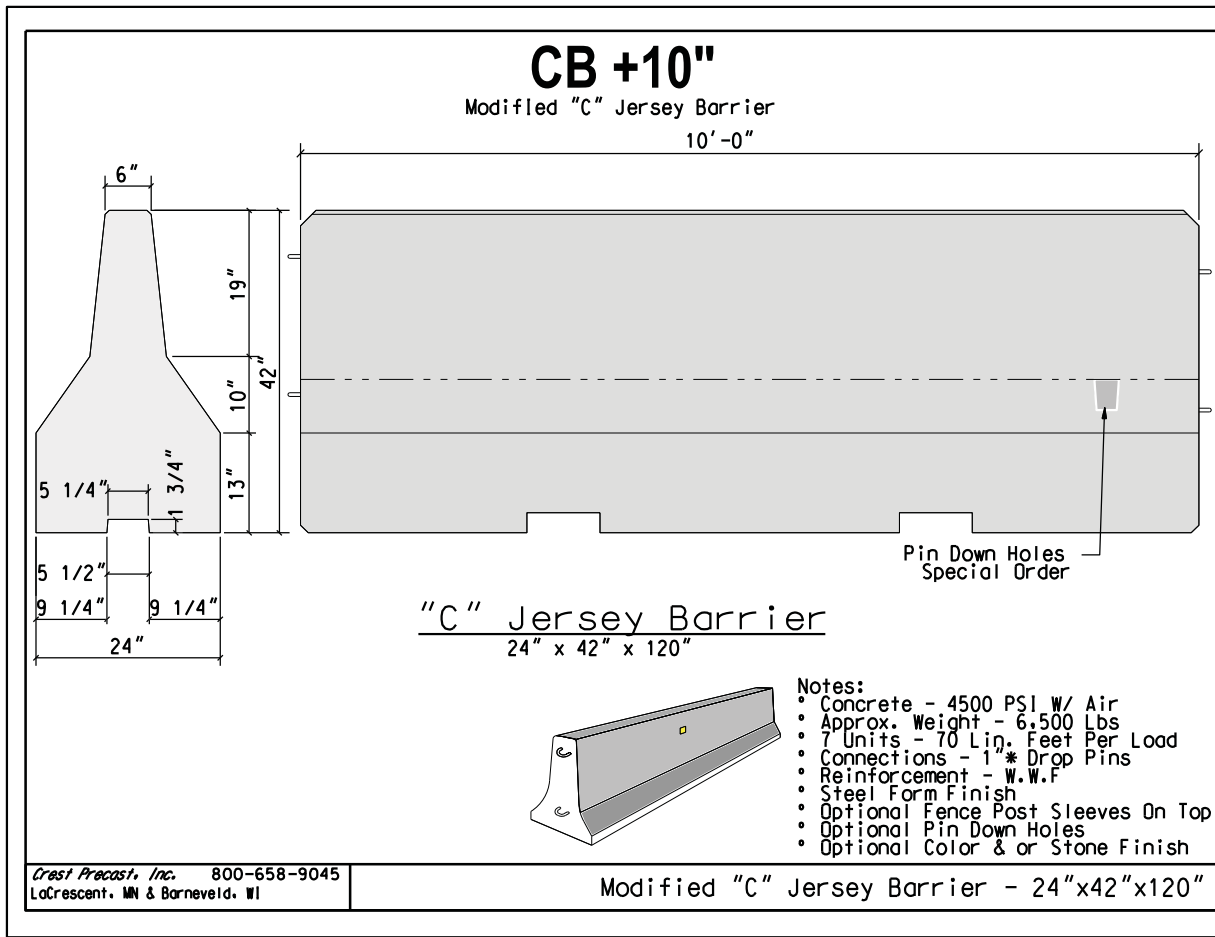
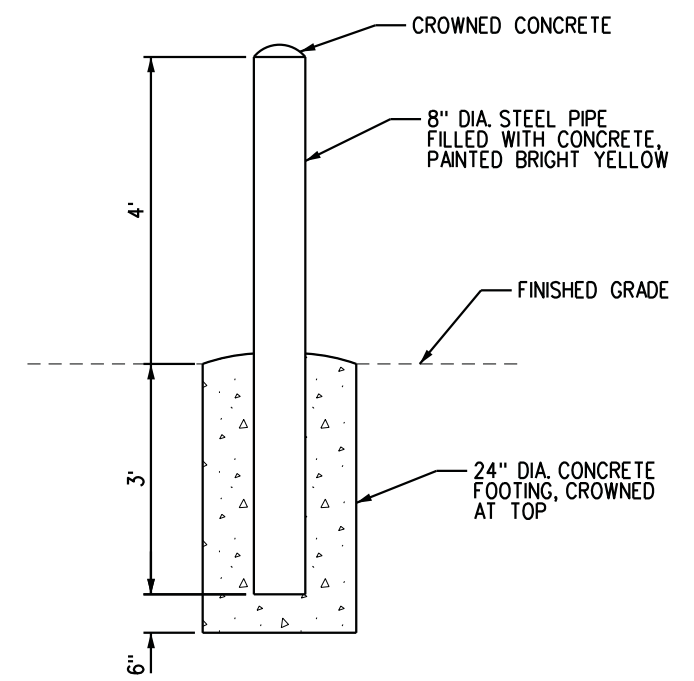
FILE: CC_FENCE-dtl_02.dgn SHEET 12 DATE: 07/25/2012

BNSF RAILWAY COMPANY - ENGINEERING SERVICES

L:\0834\000-CAD\100-Development\Plan\Sheets\CC_BARRIER-dtl_01.dgn
 BNSF_PEN_010111.tbl
 BY: _USTIN_ \USER\BNSF_PDF_010111.plt:cjg
 TIME: 1:12:29 PM
 7/23/2012

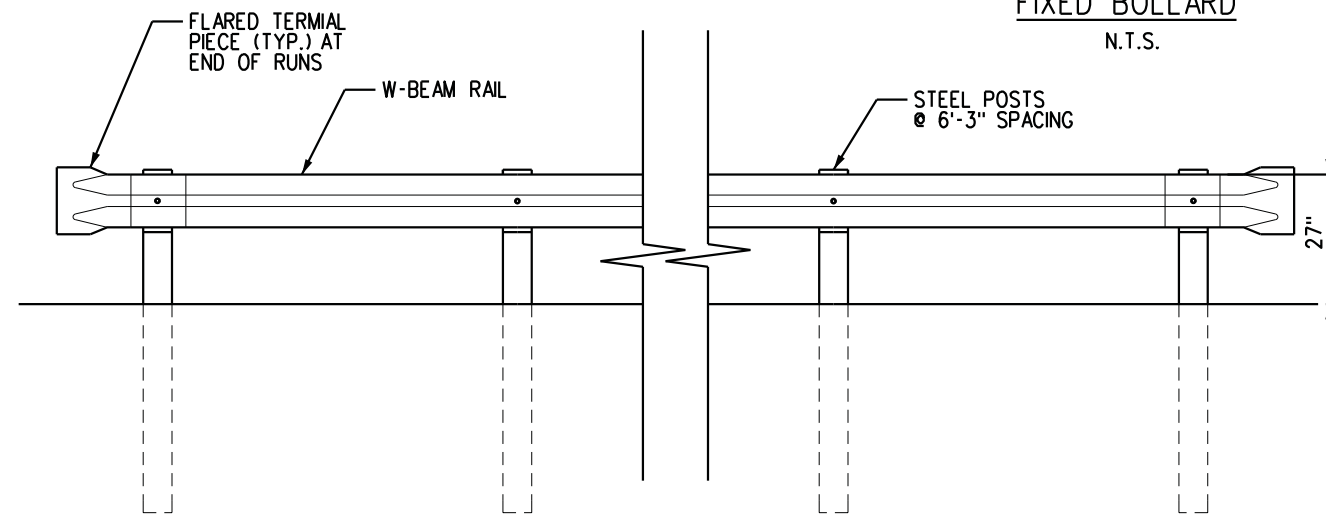


NOTE:
BOLLARD PLAN VIEWS ARE
SCHEMATIC ONLY AND SHALL BE
ADJUSTED FOR FIELD CONDITIONS



- Notes:
- Concrete - 4500 PSI W/ Air
 - Approx. Weight - 6,500 Lbs
 - 7 Units - 70 Lin. Feet Per Load
 - Connections - 1* Drop Pins
 - Reinforcement - W.W.F
 - Steel Form Finish
 - Optional Fence Post Sleeves On Top
 - Optional Pin Down Holes
 - Optional Color & or Stone Finish

Crest Precast, Inc. 800-658-9045
LaCrescent, MN & Barneveld, WI



- NOTES
1. GUARDRAIL TYPE 3 SHALL BE INSTALLED ACCORDING TO CDOT DETAILS. SEE CDOT M-606-1 FOR ADDITIONAL NOTES AND DETAILS.
 2. "C" JERSEY BARRIER SHOWN FOR INFORMATION ONLY. NO NEW JERSEY BARRIERS ARE BEING INSTALLED ON SITE.

CITY COUNCIL CERTIFICATE:
APPROVED BY THE CITY COUNCIL
OF THE CITY OF COMMERCE CITY
THIS ___ DAY OF _____,
A.D. _____

CITY SIGNATURE _____

DATE OF PREPARATION:
MAY 14, 2012

SUBSEQUENT RESUBMITTAL:
JULY 25, 2012

ASSESSOR'S PIN:
172121401002, 172121005015,
AND 172121005018

BNSF Railway Company 9101 Yosemite Irondale, CO 80640 	<table border="1"> <thead> <tr> <th>REV</th> <th>DATE</th> <th>DESCRIPTION</th> </tr> </thead> <tbody> <tr><td> </td><td> </td><td> </td></tr> <tr><td> </td><td> </td><td> </td></tr> <tr><td> </td><td> </td><td> </td></tr> <tr><td> </td><td> </td><td> </td></tr> <tr><td> </td><td> </td><td> </td></tr> <tr><td> </td><td> </td><td> </td></tr> <tr><td> </td><td> </td><td> </td></tr> </tbody> </table>	REV	DATE	DESCRIPTION																						DESIGNED CHECKED DRAWN APPROVED PROJECT DATE 07/25/2012	COLORADO DIVISION BRUSH SUBDIVISION LINE SEGMENT 2	
		REV	DATE	DESCRIPTION																								
AECOM USA, Inc. 717 Seventeenth Street, Suite 2600 Denver, CO 80202 T 303.228.3000 F 303.228.3001 www.aecom.com 	REVISIONS <table border="1"> <thead> <tr> <th>NO.</th> <th>DESCRIPTION</th> <th>DATE</th> <th>BY</th> </tr> </thead> <tbody> <tr><td> </td><td> </td><td> </td><td> </td></tr> <tr><td> </td><td> </td><td> </td><td> </td></tr> <tr><td> </td><td> </td><td> </td><td> </td></tr> <tr><td> </td><td> </td><td> </td><td> </td></tr> </tbody> </table>	NO.	DESCRIPTION	DATE	BY																	BNSF IRONDALE AUTOMOTIVE STAGING FACILITY BARRIER DETAILS						
NO.	DESCRIPTION	DATE	BY																									
BNSF RAILWAY COMPANY - ENGINEERING SERVICES		PROTRAK SEQ NO STATUS DEV. PLAN	FILE: CC_BARRIER-dtl_01.dgn	SHEET 13	DATE: 07/25/2012																							

PLANTING NOTES

- All plant materials shall meet or exceed current American Standard for Nursery Stock (ANSI Z60.1-2004) and the Colorado Nursery Act and accompanying Rules and Regulations.
- All plants will be balled and burlapped or container grown. Bare root or spaded plants will not be accepted.
- Supply all plant material in quantities sufficient to complete the planting bed as shown on the drawings.
- All plants will be inspected and approved by the Owner's Representative prior to delivery to the site.
- Any proposed substitutions of plant species shall be approved by the Landscape Architect and City of Commerce City Forestry prior to delivery to the site.
- Obtain Landscape Architects approval of finish grading prior to the start of planting.
- Stake locations of all proposed trees and edges of new planting beds for approval by the Owner's Representative prior to the commencement of planting.
- Landscape Contractor shall be responsible for becoming aware of all underground utilities, pipes and structures. The Landscape Contractor shall be held responsible for contacting all utility companies for field location of underground utility lines prior to any excavation. Landscape Contractor shall take sole responsibility for any cost of utility repair due to damage caused by his operations.
- Do not willfully proceed with construction as designed when it is obvious that unknown obstructions and/or grade differences exist that may not have been known during design. Such conditions shall be immediately brought to the attention of the Landscape Architect, AECOM at (303) 228-3000. The Landscape Contractor shall assume full responsibility for all necessary revisions due to failure to give such notification.
- Landscape Contractor shall be responsible for any coordination with subcontractors as required to accomplish planting operations.

- See specifications for planting requirements, soil preparation testing, materials and execution. Arrange for visit of Landscape Architect for review and approval a minimum of 48 hours prior to installation.
- See details and specifications for staking method, plant pit dimensions and backfill requirements.
- Landscape Contractor shall provide per-unit costs for every size of plant materials, and by type, as called out on planting plans. Unit cost to include the plant material itself and installation, including all labor, amendments, fertilizers, etc., as detailed and specified for each size.
- Landscape Contractor is responsible to do their own quantity takeoffs for all plant materials and sizes shown on plans.
- The Landscape Contractor shall be responsible for positive drainage throughout the site with accurately set flow lines. No low spots or ponding of surface water will be accepted in final work.
- Coordinate installation of large plant material with installation of wall footings, bridge abutments and pavements. Any damage to improvements by others is the responsibility of the Landscape Contractor.
- The Landscape Contractor shall allow for the addition of specified quantities of soil amendments, conditioners and mulch in soil preparation and finish grading.
- Imported soil shall be used to supplement the existing soil as necessary to meet the finish grade requirements at planting areas.
- The Landscape Contractor shall verify soil test at their expense prior to planting and will follow test recommendations and Landscape Architect's approval for soil amendments.
- The Landscape Contractor shall receive the specified subgrade elevation, of +/- one tenth of a foot below finish grade. The Landscape Contractor shall be responsible to furnish and install amended or imported soil in any planting areas as necessary to achieve the specified finish planting grades unless otherwise noted on plans or specs.

- The Landscape Architect reserves the right to adjust the location of plant material during installation as appropriate to the project. For trees in the right-of-way, adjustments of 5'-0" or more must have prior authorization of Commerce City Staff.
- Contractor is to familiarize themself with the layout, grading and civil engineering documents to coordinate actual location of trees and shrubs.
- Maintenance Statement:
All landscaping shown on this plan shall be maintained in a neat and adequate manner. Required maintenance activities shall include, but not limited to, mowing of lawns, trimming of hedges, adequate irrigation, replacement of dead, diseased or unsightly landscaping, removal of weeds from planted areas, and appropriate pruning of plant materials.
- Take all dimensions from back of curb, center line of trees, and centerline of light pole bases, unless otherwise noted.
- Take all dimensions perpendicular to any reference line, centerline, or back of curb.
- Written dimensions supersede scaled dimensions. Do not scale drawings, if there is a question regarding dimension, contact AECOM for verification.
- All landscaped areas shall be irrigated with an automatic irrigation system. Lawn areas will be sprayed and shrubs will be drip irrigated. Natural areas, such as those with prairie types of grasses and native shrub species, are designed to irrigate through grow-in and then be shut off except during severe drought. Contractor shall be responsible for taps, backflow prevention and winterization systems, sleeving under paved areas and all sprinkler system components necessary for a fully functional system. Trees shall be on a separate zone from turf.
- Street Trees shall be placed 5'-0" min from buried utilities.

GENERAL LEGEND

- LIMIT OF LANDSCAPE WORK
- 5'-PROPOSED CONTOUR
- - - 1'-PROPOSED CONTOUR
- +re xx SPOT GRADE
- STEEL EDGER, RE: DTL 1/L-501
- 1 TURFGRASS
- 2 ROCK MULCH, TYPE 1 RE: SPECS
- 3 ROCK MULCH, TYPE 2 RE: SPECS
- BOULDER2, RE DTL 2/L-501
- (#)X-XXX PLANT CALL OUT, SEE PLANT LEGEND, L-101

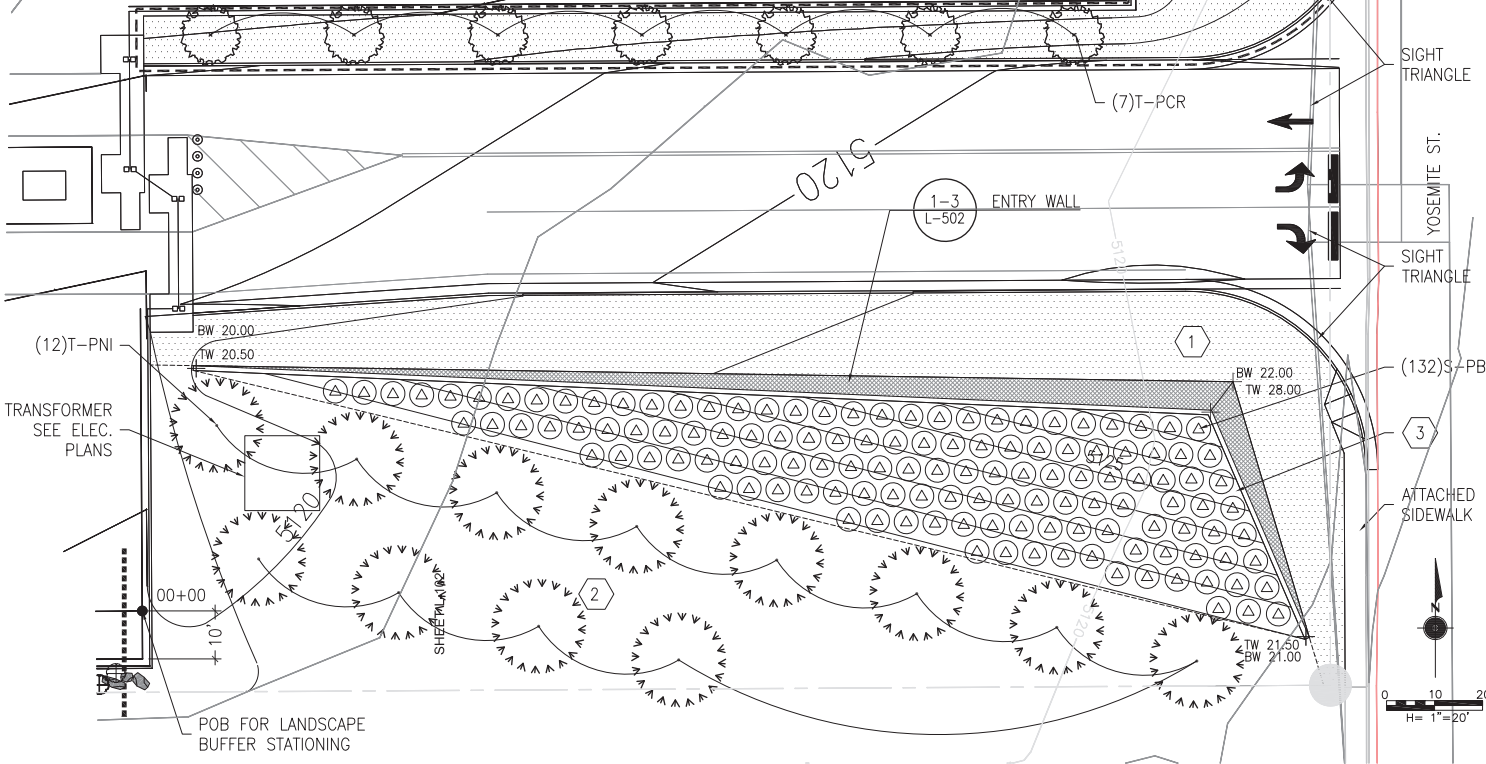
PLANT SCHEDULE

DECIDUOUS TREES						
Abbr.	Quantity	Genus	Species	Common Name	Min. Size	Min. Spacing
T-COC	1	Celtis	occidentalis	Hackberry	3" cal.	as shown
T-GTS	1	Gleditsia	triacanthos 'Skyline'	Skyline Honey Locust	3" cal.	as shown
T-PCR	7	Pyrus	calleryana 'Redspire'	Redspire Pear	3" cal.	as shown

EVERGREEN TREES						
Abbr.	Quantity	Genus	Species	Common Name	Min. Size	Min. Spacing
T-PNI	12	Pinus	nigra	Austrian Pine	8-10' ht.	as shown

SHRUBS						
Abbr.	Quantity	Genus	Species	Common Name	Min. Size	Min. Spacing
S-BTA	52	Berberis	thunbergii 'Atropurpurea'	Red Barberry	5 gal.	as shown
S-CME	52	Cowania	mexicana	Cliffrose	5 gal.	as shown
S-CLU	6	Cotoneaster	lucidus	Peking Cotoneaster	5 gal.	as shown
S-CNA	50	Chrysothamnus	nauseosus albicaulis	Tall Blue Rabbitbrush	5 gal.	as shown
S-FPA	52	Fallugia	paradoxa	Apache Plume	5 gal.	as shown
S-JSS	78	Juniperus	sabina 'Scandia'	Scandia Juniper	5 gal.	as shown
S-PBP	132	Prunus	besseyi 'Pawnee Buttes'	Pawnee Buttes Sand Cherry	5 gal.	as shown
S-RTR	6	Rhus	trilobata	Three-Leaf Sumac	5 gal.	as shown

TURF						
Abbr.	Quantity	Genus	Species	Common Name	Min. Size	Min. Spacing
-	-	Poa	pratensis	Kentucky Blue Grass	-	-



CITY COUNCIL CERTIFICATE:
APPROVED BY THE CITY COUNCIL
OF THE CITY OF COMMERCE CITY
THIS ___ DAY OF _____,
A.D. _____

CITY SIGNATURE _____

DATE OF PREPARATION:
MAY 14, 2012

SUBSEQUENT RESUBMITTAL:
JULY 25, 2012

ASSESSOR'S PIN:
172121401002, 172121005015,
AND 172121005018

\$FILE\$
 \$PENTBL\$
 \$PLTRV\$
 \$USERNAME\$
 \$TIME\$
 \$DATE\$

BNSF Railway Company
9101 Yosemite
Irondale, CO 80640

AECOM USA, Inc.
717 Seventeenth Street, Suite 2600
Denver, CO 80202
T 303.228.3000 F 303.228.3001 www.aecom.com

REV	DATE	DESCRIPTION

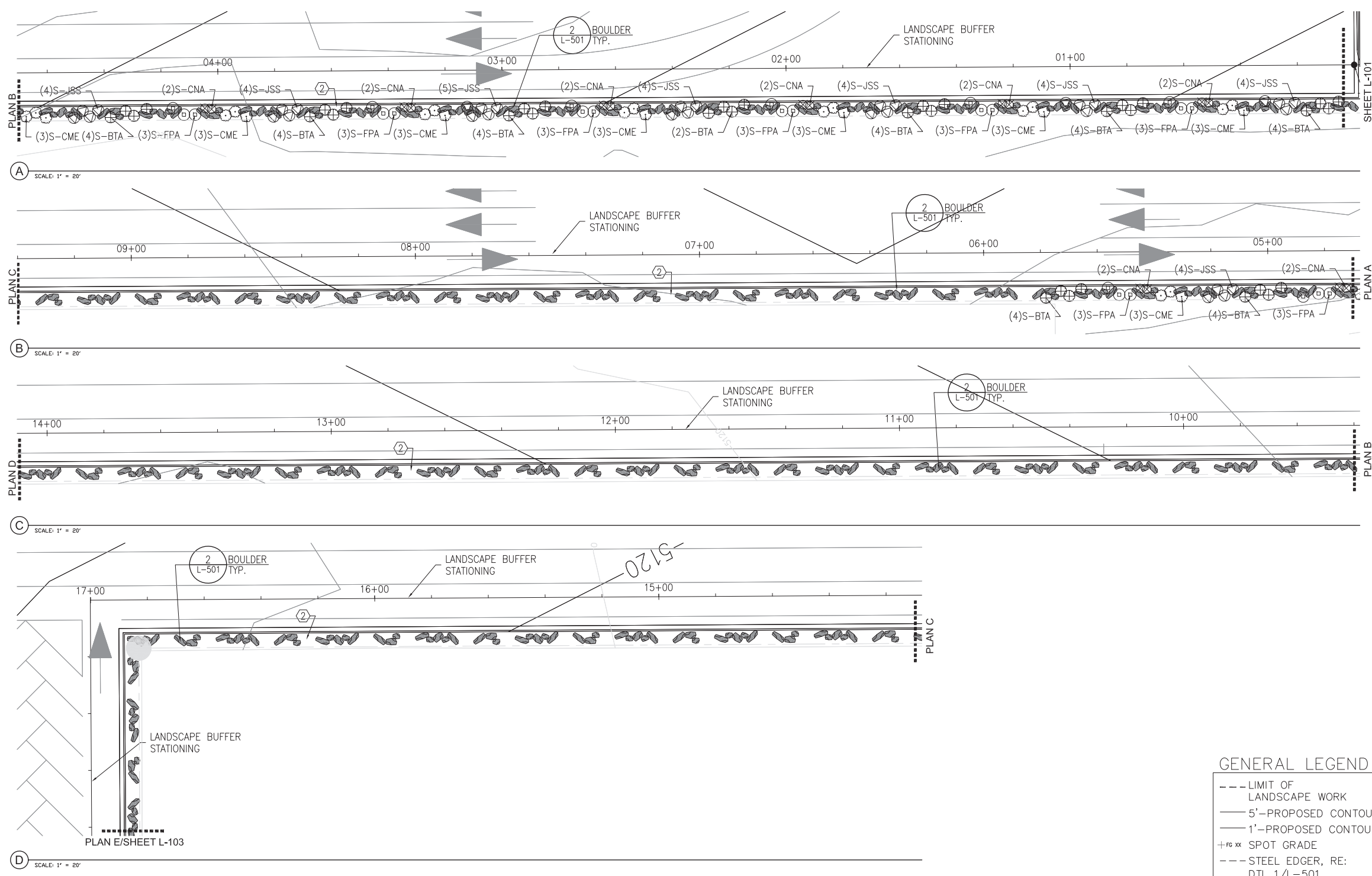
DESIGNED
CHECKED
DRAWN
APPROVED
PROJECT
DATE 07/25/2012
PROTRAK SEQ NO
STATUS DEV. PLAN

COLORADO DIVISION
BRUSH SUBDIVISION
LINE SEGMENT 2

REVISIONS			
NO.	DESCRIPTION	DATE	BY

BNSF IRONDALE AUTOMOTIVE
STAGING FACILITY
L-101 LANDSCAPE PLAN

FILE: \$FILES\$ SHEET 15 DATE: 07/25/2012



PLANT LEGEND

DECIDUOUS TREES	
Abbr.	Genus
T-COC	Hackberry
T-GTS	Skyline Honey Locust
T-PCR	Redspire Pear

EVERGREEN TREES	
Abbr.	Genus
T-PNI	Austrian Pine

SHRUBS	
Abbr.	Genus
S-BTA	Red Barberry
S-CME	Cliffrose
S-CLU	Peking Cotoneaster
S-CNA	Tall Blue Rabbitbrush
S-FPA	Apache Plume
S-JSS	Scandia Juniper
S-PBP	Pawnee Buttes Sand Cherry
S-RTR	Three-Leaf Sumac

TURF	
Abbr.	Genus
	Kentucky Blue Grass

GENERAL LEGEND

--- LIMIT OF LANDSCAPE WORK	1 TURFGRASS
— 5'-PROPOSED CONTOUR	2 ROCK MULCH, TYPE 1 RE: SPECS
— 1'-PROPOSED CONTOUR	3 ROCK MULCH, TYPE 2 RE: SPECS
+60 xx SPOT GRADE	BOULDER2, RE DTL 2/L-501
--- STEEL EDGER, RE: DTL 1/L-501	(#)X-xxx PLANT CALL OUT, SEE PLANT LEGEND, L-101

CITY COUNCIL CERTIFICATE:
APPROVED BY THE CITY COUNCIL
OF THE CITY OF COMMERCE CITY
THIS ___ DAY OF _____,
A.D. _____.

CITY SIGNATURE _____

DATE OF PREPARATION:
MAY 14, 2012

SUBSEQUENT RESUBMITTAL:
JULY 25, 2012

ASSESSOR'S PIN:
172121401002, 172121401003
AND 172121005018

DATE: \$DATE\$
DRAWN: \$DRAW\$
CHECKED: \$CHECKED\$
BY: \$USER\$
TIME: \$TIME\$
PLTRVRS: \$PLTRVRS\$
PENTBL: \$PENTBL\$
FILE: \$FILE\$

REV	DATE	DESCRIPTION

DESIGNED _____
CHECKED _____
DRAWN _____
APPROVED _____
PROJECT _____
DATE 07/25/2012

PROTRAK SEQ NO _____ STATUS DEV. PLAN

BNSF RAILWAY COMPANY - ENGINEERING SERVICES

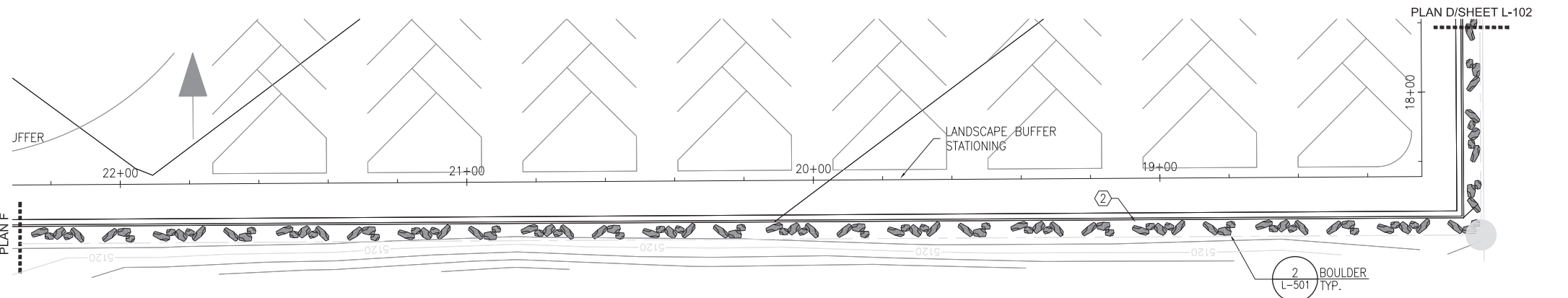
COLORADO DIVISION
BRUSH SUBDIVISION
LINE SEGMENT 2

REVISIONS			
NO.	DESCRIPTION	DATE	BY

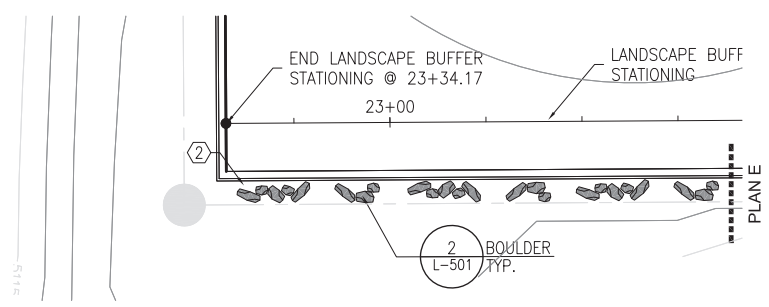
BNSF RAILWAY

BNSF IRONDALE AUTOMOTIVE
STAGING FACILITY
L-102 LANDSCAPE PLAN

FILE: \$FILES\$ SHEET 16 DATE: 07/25/2012



E SCALE: 1" = 20'



F SCALE: 1" = 20'

PLANT LEGEND

DECIDUOUS TREES	
Abbr.	Genus
T-COC	Hackberry
T-GTS	Skyline Honey Locust
T-PCR	Redspire Pear

EVERGREEN TREES	
Abbr.	Genus
T-PNI	Austrian Pine

SHRUBS	
Abbr.	Genus
S-BTA	Red Barberry
S-CME	Cliffrose
S-CLU	Peking Cotoneaster
S-CNA	Tall Blue Rabbitbrush
S-FPA	Apache Plume
S-JSS	Scandia Juniper
S-PBP	Pawnee Buttes Sand Cherry
S-RTR	Three-Leaf Sumac

TURF	
Abbr.	Genus
	Kentucky Blue Grass

GENERAL LEGEND

---	LIMIT OF LANDSCAPE WORK	1	TURFGRASS
---	5'-PROPOSED CONTOUR	2	ROCK MULCH, TYPE 1 RE: SPECS
---	1'-PROPOSED CONTOUR	3	ROCK MULCH, TYPE 2 RE: SPECS
+xx	SPOT GRADE		
---	STEEL EDGER, RE: DTL 1/L-501		BOULDER2, RE DTL 2/L-501
		(#)X-XXX	PLANT CALL OUT, SEE PLANT LEGEND, L-101

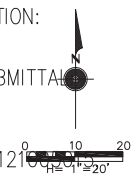
CITY COUNCIL CERTIFICATE:
APPROVED BY THE CITY COUNCIL
OF THE CITY OF COMMERCE CITY
THIS ____ DAY OF _____,
A.D. _____.

CITY SIGNATURE _____

DATE OF PREPARATION:
MAY 14, 2012

SUBSEQUENT RESUBMITTAL:
JULY 25, 2012

ASSESSOR'S PIN:
172121401002, 172121401003
AND 172121005018



\$DATE\$ \$DRAW\$ \$CHECKED\$ \$BNSF RAILWAY COMPANY - ENGINEERING SERVICES\$ \$PROTRAK SEQ NO\$ \$STATUS\$ \$DEV. PLAN\$ \$FILE\$ \$FILES\$ \$SHEET 17\$ \$DATE: 07/25/2012\$

BNSF Railway Company
9101 Yosemite
Irondale, CO 80640

AECOM USA, Inc.
717 Seventeenth Street, Suite 2600
Denver, CO 80202
T 303.228.3000 F 303.228.3001 www.aecom.com

REV	DATE	DESCRIPTION

DESIGNED _____
CHECKED _____
DRAWN _____
APPROVED _____
PROJECT _____
DATE 07/25/2012

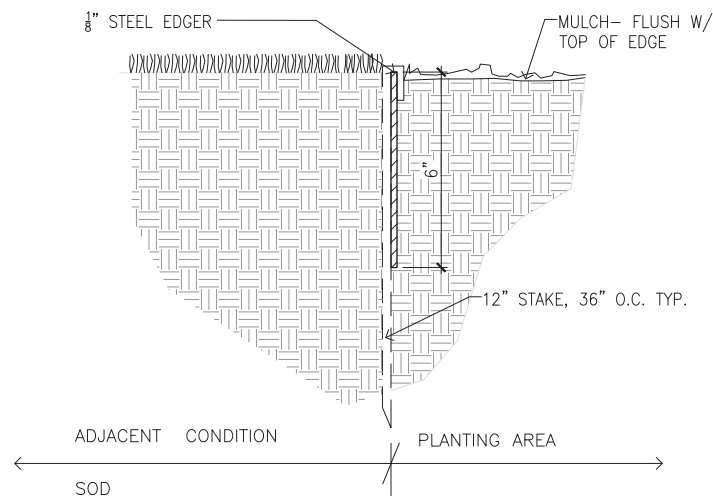
COLORADO DIVISION
BRUSH SUBDIVISION
LINE SEGMENT 2

REVISIONS			
NO.	DESCRIPTION	DATE	BY

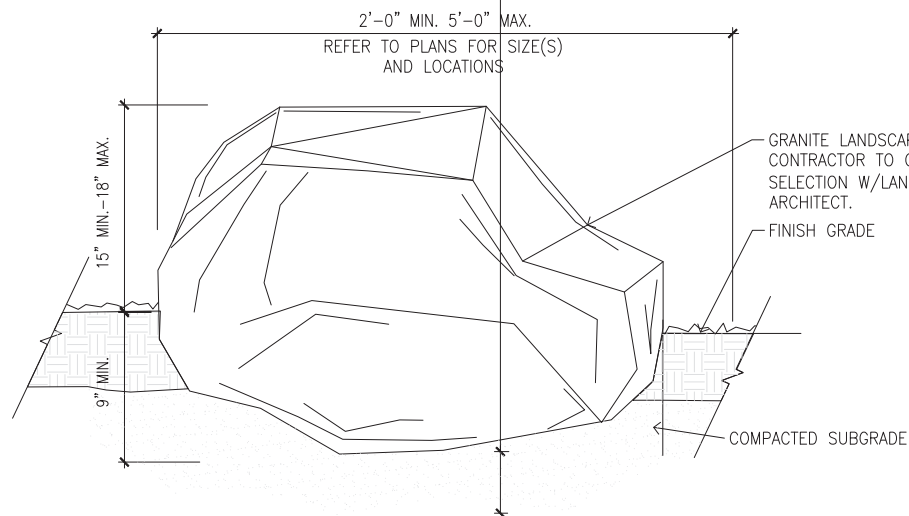
BNSF RAILWAY

BNSF IRONDALE AUTOMOTIVE
STAGING FACILITY
L-103 LANDSCAPE PLAN

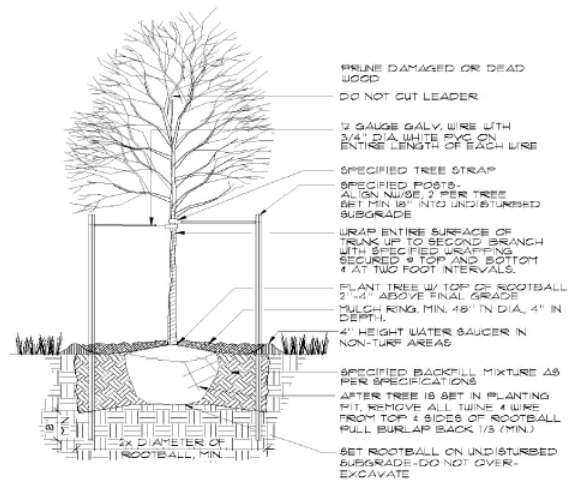
FILE: \$FILES\$ SHEET 17 DATE: 07/25/2012



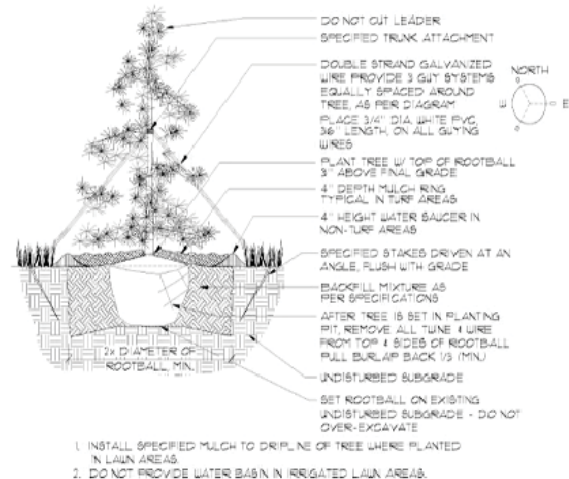
1 STEEL EDGER
SCALE: 3"=1'-0"



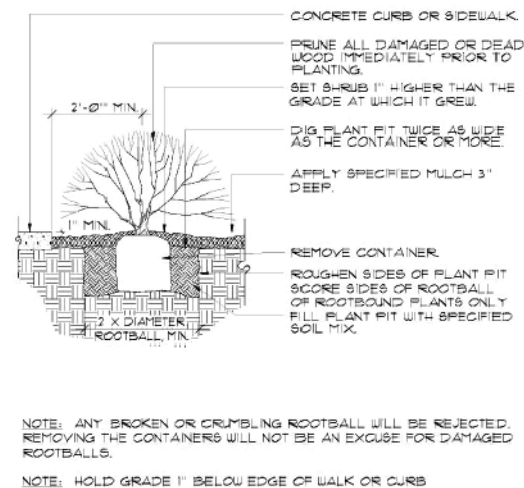
2 BOULDER
SCALE: 1"=1'-0"



DECIDUOUS TREE PLANTING
SCALE: NTS



EVERGREEN TREE PLANTING
SCALE: NTS



SHRUB PLANTING
SCALE: NTS

CITY COUNCIL CERTIFICATE:
APPROVED BY THE CITY COUNCIL
OF THE CITY OF COMMERCE CITY
THIS ____ DAY OF _____,
A.D. _____.

CITY SIGNATURE _____

DATE OF PREPARATION:
MAY 14, 2012

SUBSEQUENT RESUBMITTAL:
JULY 25, 2012

ASSESSOR'S PIN:
172121401002, 172121005015,
AND 172121005018

BNSF Railway Company
9101 Yosemite
Irondale, CO 80640

AECOM USA, Inc.
717 Seventeenth Street, Suite 2600
Denver, CO 80202
T 303.228.3000 F 303.228.3001 www.aecom.com

REV	DATE	DESCRIPTION

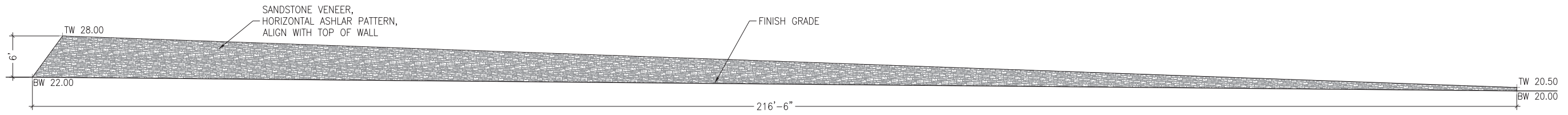
DESIGNED
CHECKED
DRAWN
APPROVED
PROJECT
DATE 07/25/2012
PROTRAK SEQ NO
STATUS
DEV. PLAN

COLORADO DIVISION
BRUSH SUBDIVISION
LINE SEGMENT 2

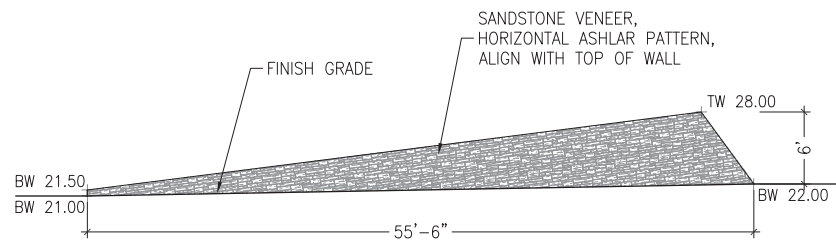
REVISIONS			
NO.	DESCRIPTION	DATE	BY



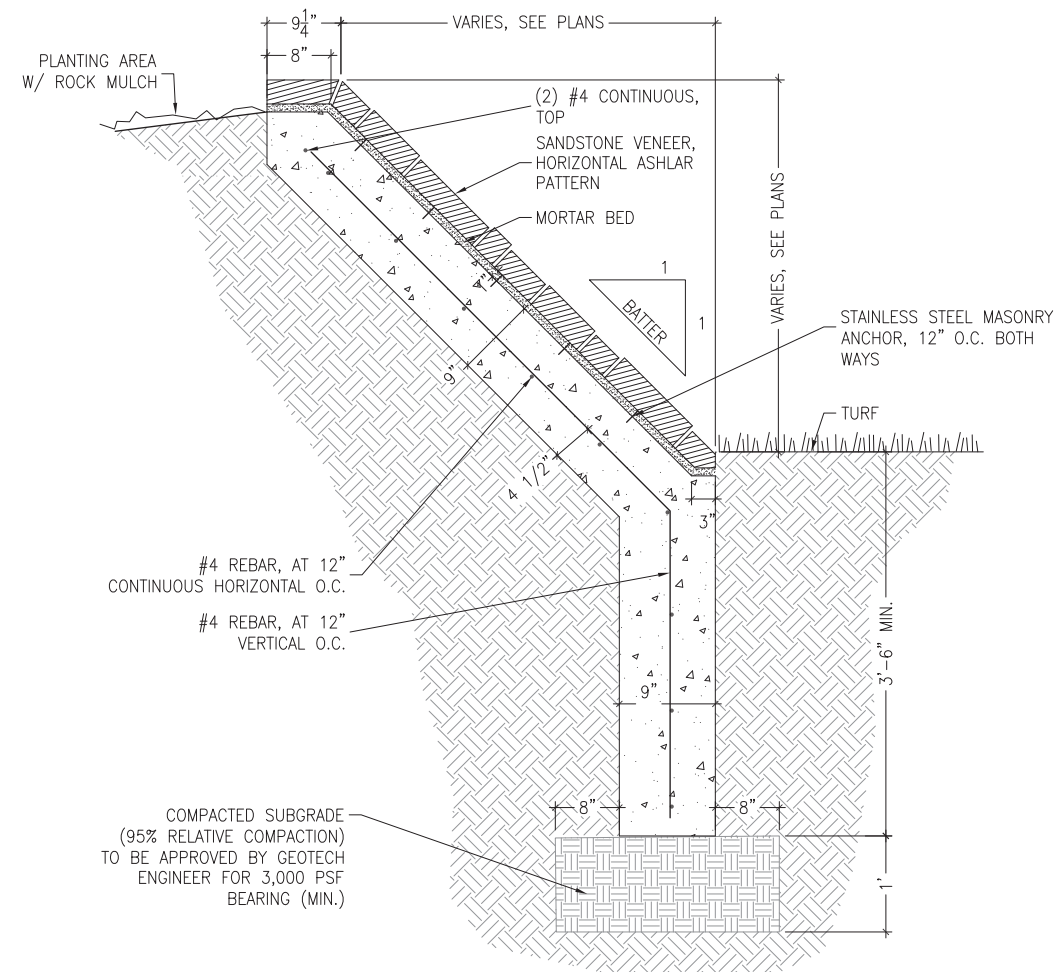
BNSF IRONDALE AUTOMOTIVE
STAGING FACILITY
L-501 LANDSCAPE DETAILS



3 WALL ELEVATION A
SCALE: 1/8"=1'-0"



2 WALL ELEVATION B
SCALE: 1/8"=1'-0"



1 WALL SECTION
SCALE: 1"=1'-0"

CITY COUNCIL CERTIFICATE:
APPROVED BY THE CITY COUNCIL
OF THE CITY OF COMMERCE CITY
THIS ____ DAY OF _____,
A.D. _____

CITY SIGNATURE _____

DATE OF PREPARATION:
MAY 14, 2012

SUBSEQUENT RESUBMITTAL:
JULY 25, 2012

ASSESSOR'S PIN:
172121401002, 172121005015,
AND 172121005018

\$FILE\$
 \$PENTBL\$
 \$PLTDV\$
 \$USERNAME\$
 \$TIME\$
 \$DATE\$

BNSF Railway Company
9101 Yosemite
Irondale, CO 80640

AECOM USA, Inc.
717 Seventeenth Street, Suite 2600
Denver, CO 80202
T 303.228.3000 F 303.228.3001 www.aecom.com

REV	DATE	DESCRIPTION

DESIGNED
CHECKED
DRAWN
APPROVED
PROJECT
DATE 07/25/2012

PROTRAK SEQ NO
STATUS
DEV. PLAN

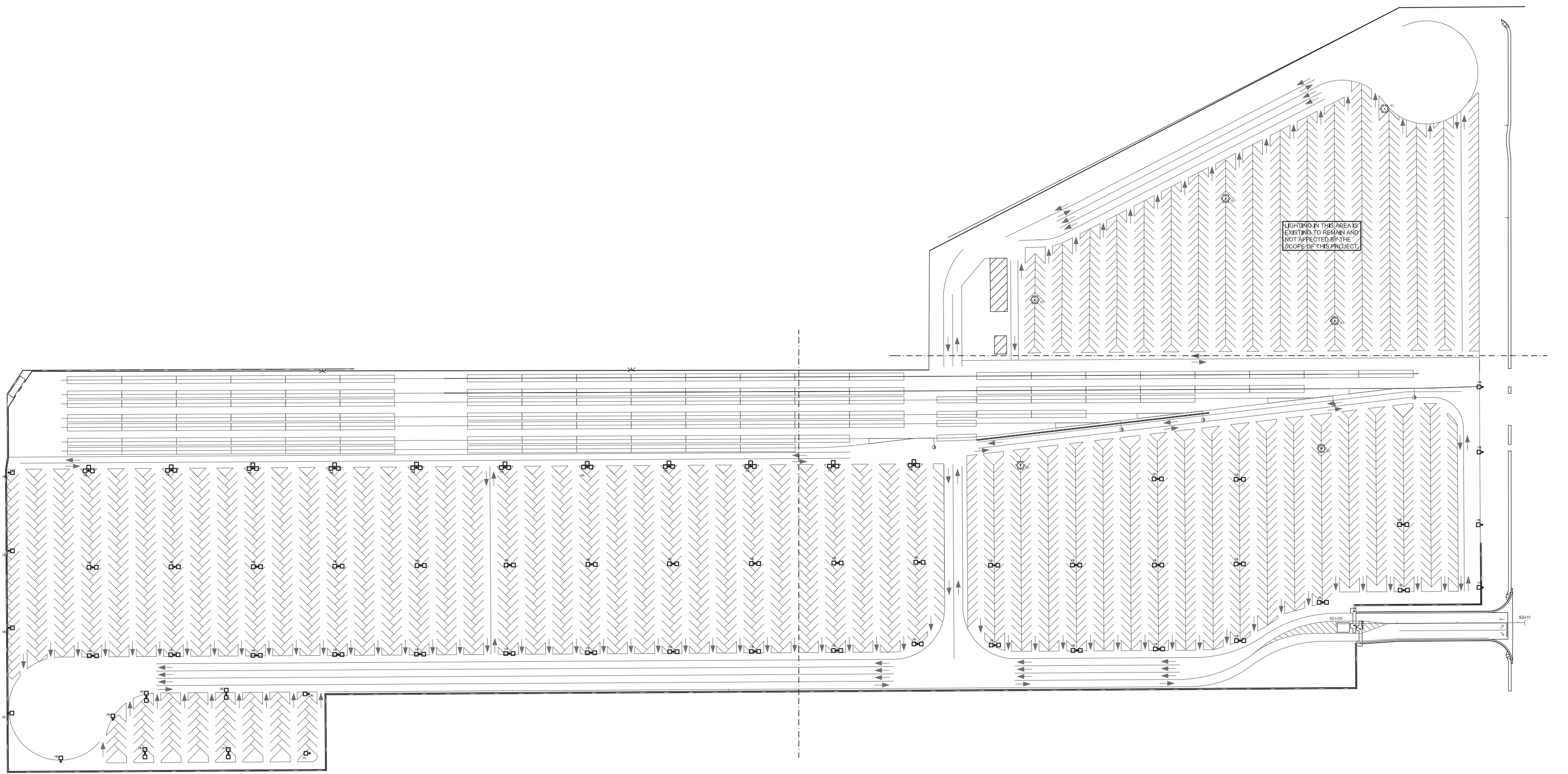
COLORADO DIVISION
BRUSH SUBDIVISION
LINE SEGMENT 2

REVISIONS		
NO.	DESCRIPTION	DATE

BNSF RAILWAY

BNSF IRONDALE AUTOMOTIVE
STAGING FACILITY
L-502 LANDSCAPE DETAILS

FILE: \$FILES\$ SHEET 19 DATE: 07/25/2012



1 PROPOSED SITE LIGHTING PLAN
1" = 80'-0"



CITY COUNCIL CERTIFICATE:
APPROVED BY THE CITY COUNCIL
OF THE CITY OF COMMERCE CITY
THIS ___ DAY OF _____
A.D. _____

CITY SIGNATURE _____

DATE OF PREPARATION:
MAY 14, 2012

SUBSEQUENT RESUBMITTAL:
JULY 25, 2012

ASSESSOR'S PIN:
17212140000, 172121005015,
AND 172121005019

SSG
MEP
SSG MEP, Inc.
3025 S. Parker Road, Suite 1100
Aurora, Co 80014-2950
303.696.2602 fax 303.696.0812
www.ssgroupinc.com
SSG Project Number: 10046.00

BNSF Railway Company
9101 Yosemite
Ironton, CO 80640

BNSF
RAILWAY

AECOM USA, Inc.
717 Seventeenth Street, Suite 2000
Denver, CO 80202
T 303.228.3000 F 303.228.3001 www.aecom.com

AECOM

REV	DATE	DESCRIPTION

DESIGNED SCS
CHECKED SCS
DRAWN KAT
APPROVED SCS
PROJECT xxxx
DATE 07/25/2012

COLORADO DIVISION
BRUSH SUBDIVISION
LINE SEGMENT 2

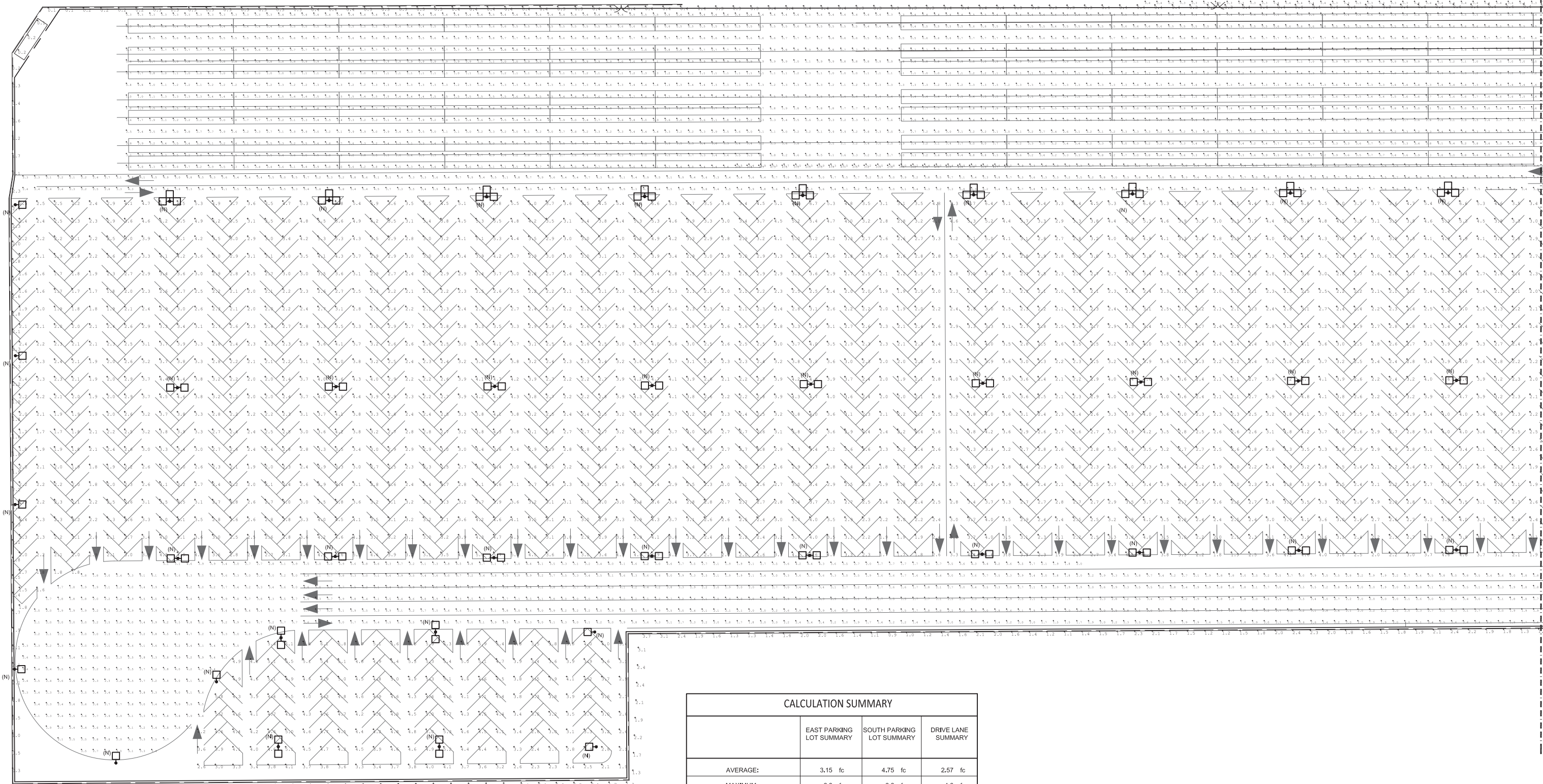
NO.	DESCRIPTION	DATE	BY

BNSF
RAILWAY

BNSF IRONDALE AUTOMOTIVE
STAGING FACILITY

FILE: \$FILES\$ SHEET 20 DATE: 07/25/2012

DATE: TIME: BY: USER: \$USER\$ FILE: \$FILES\$



MATCHLINE - REFER TO SHEET 2 FOR CONTINUATION

CALCULATION SUMMARY			
	EAST PARKING LOT SUMMARY	SOUTH PARKING LOT SUMMARY	DRIVE LANE SUMMARY
AVERAGE:	3.15 fc	4.75 fc	2.57 fc
MAXIMUM:	6.8 fc	6.6 fc	4.0 fc
MINIMUM:	1.7 fc	2.8 fc	1.5 fc
AVERAGE / MINIMUM:	1.85:1	1.70:1	1.71:1
MAXIMUM / MINIMUM:	4.0:1	2.36:1	2.61:1

1 PROPOSED SITE LIGHTING PLAN
1" = 40'-0"



CITY COUNCIL CERTIFICATE:
APPROVED BY THE CITY COUNCIL
OF THE CITY OF COMMERCE CITY
THIS ___ DAY OF _____
A.D.

CITY SIGNATURE _____
DATE OF PREPARATION:
MAY 14, 2012
SUBSEQUENT RESUBMITTAL:
JULY 25, 2012
ASSESSOR'S PIN:
17212140000, 172121005015,
AND 172121005018

SSG MEP
SSG MEP, Inc.
3025 S. Parker Road, Suite 1100
Aurora, CO 80014-2950
303.696.2602 fax 303.696.0812
www.ssgroupinc.com
SSG Project Number: 10046.00

BNSF Railway Company 9101 Yosemite Irondale, CO 80640	BNSF RAILWAY	REV	DATE	DESCRIPTION
AECOM USA, Inc. 717 Seventeenth Street, Suite 2000 Denver, CO 80202 T 303.228.3000 F 303.228.3001 www.aecom.com	AECOM			
DESIGNED	SCS			
CHECKED	SCS			
DRAWN	KAT			
APPROVED	SCS			
PROJECT	XXXX			
DATE	07/25/2012			
DESIGNED BY	SCS			
CHECKED BY	SCS			
DRAWN BY	KAT			
APPROVED BY	SCS			

COLORADO DIVISION BRUSH SUBDIVISION LINE SEGMENT 2		
REVISIONS		
NO.	DESCRIPTION	DATE

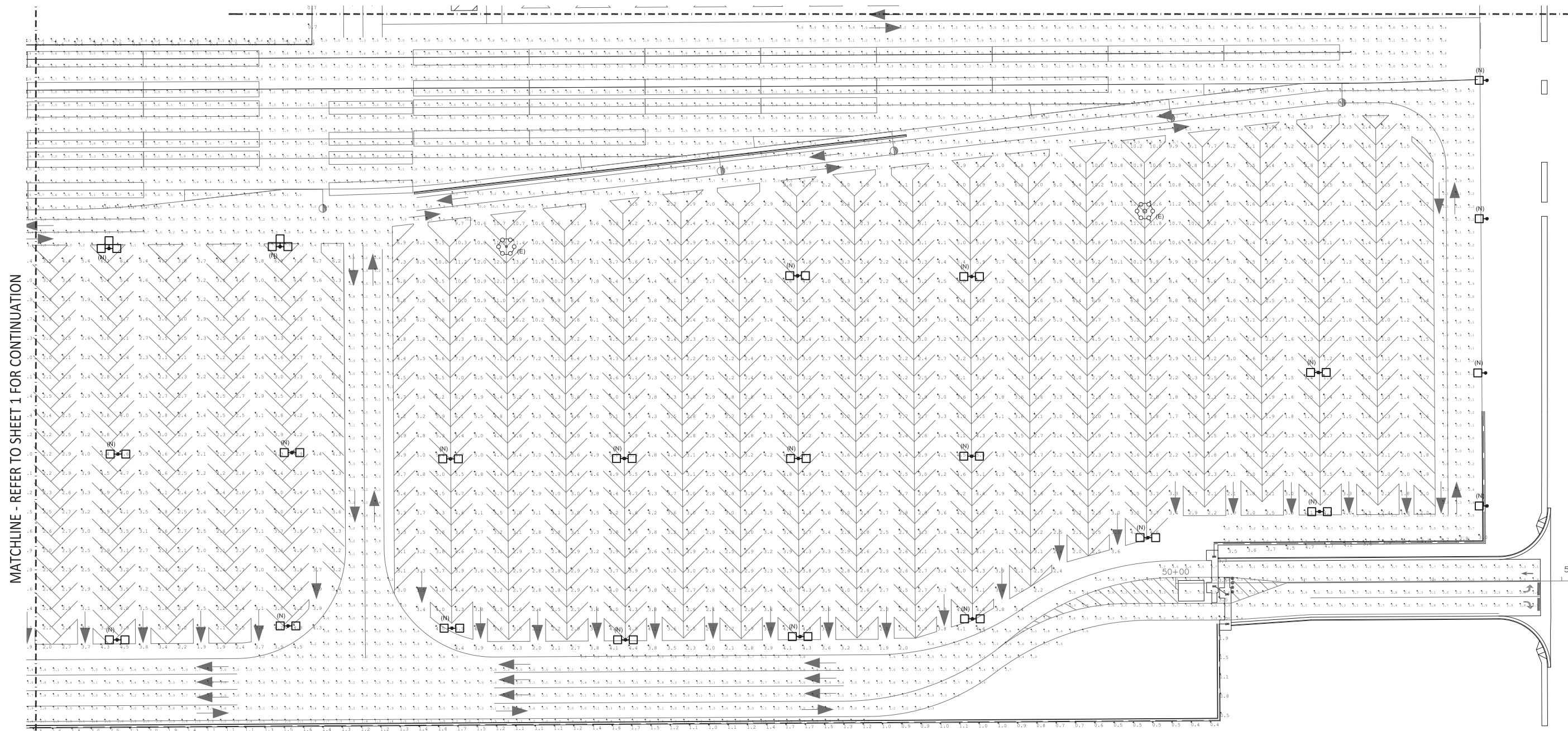
BNSF RAILWAY

BNSF IRONDALE AUTOMOTIVE STAGING FACILITY

FILE: \$FILES\$

SHEET 21 DATE: 07/25/2012

MATCHLINE - REFER TO SHEET 3 FOR CONTINUATION



MATCHLINE - REFER TO SHEET 1 FOR CONTINUATION

1 PROPOSED SITE LIGHTING PLAN
1" = 40'-0"



CALCULATION SUMMARY			
	EAST PARKING LOT SUMMARY	SOUTH PARKING LOT SUMMARY	DRIVE LANE SUMMARY
AVERAGE:	3.15 fc	4.75 fc	2.57 fc
MAXIMUM:	6.8 fc	6.6 fc	4.0 fc
MINIMUM:	1.7 fc	2.8 fc	1.5 fc
AVERAGE / MINIMUM:	1.85:1	1.70:1	1.71:1
MAXIMUM / MINIMUM:	4.0:1	2.36:1	2.61:1

CITY COUNCIL CERTIFICATE:
APPROVED BY THE CITY COUNCIL
OF THE CITY OF COMMERCE CITY
THIS ___ DAY OF _____
A.D. _____
CITY SIGNATURE
DATE OF PREPARATION:
MAY 14, 2012
SUBSEQUENT RESUBMITTAL:
JULY 25, 2012
ASSESSOR'S PIN:
1721210000, 172121005015,
AND 172121005018

SSG
MEP
SSG MEP, Inc.
3025 S. Parker Road, Suite 1100
Aurora, CO 80014-2950
303.696.2602 fax 303.696.0812
www.ssgmep.com
SSG Project Number: 10046.00

REV	DATE	DESCRIPTION

DESIGNED SCS
CHECKED SCS
DRAWN KAT
APPROVED SCS
PROJECT xxxxx
DATE 07/25/2012
FORM NO. 10
STATUS DEV. PLAN

BNSF Railway Company
9101 Yosemite
Irondale, CO 80640

AECOM USA, Inc.
717 Seventeenth Street, Suite 2000
Denver, CO 80202
T 303.228.3000 F 303.228.3001 www.aecom.com

DESIGNED BY: KAT / KSC
CHECKED BY: SCS

BNSF RAILWAY COMPANY - ENGINEERING SERVICES

COLORADO DIVISION
BRUSH SUBDIVISION
LINE SEGMENT 2

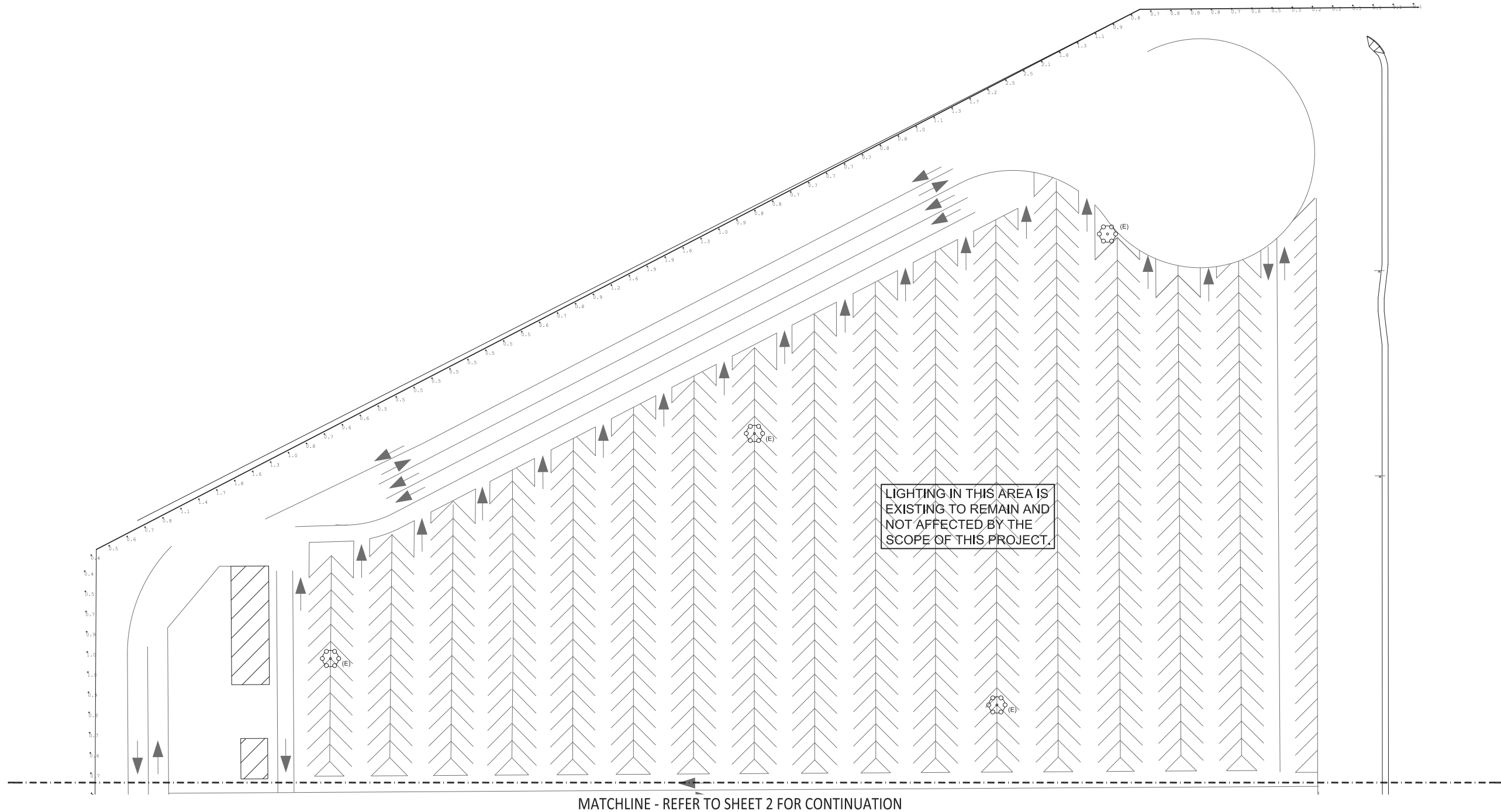
NO.	DESCRIPTION	DATE	BY

BNSF
RAILWAY

BNSF IRONDALE AUTOMOTIVE STAGING FACILITY

FILE: \$FILES\$ SHEET 22 DATE: 07/25/2012

DATE: TIME: USER: BY: USERNAME: PLOTTER: FILE:



LIGHTING IN THIS AREA IS EXISTING TO REMAIN AND NOT AFFECTED BY THE SCOPE OF THIS PROJECT.

MATCHLINE - REFER TO SHEET 2 FOR CONTINUATION

CALCULATION SUMMARY			
	EAST PARKING LOT SUMMARY	SOUTH PARKING LOT SUMMARY	DRIVE LANE SUMMARY
AVERAGE:	3.15 fc	4.75 fc	2.57 fc
MAXIMUM:	6.8 fc	6.6 fc	4.0 fc
MINIMUM:	1.7 fc	2.8 fc	1.5 fc
AVERAGE / MINIMUM:	1.85:1	1.70:1	1.71:1
MAXIMUM / MINIMUM:	4.0:1	2.36:1	2.61:1

1 PROPOSED SITE LIGHTING PLAN
1" = 40'-0"



SSG
MEP
SSG MEP, Inc.
3025 S. Parker Road, Suite 1100
Aurora, CO 80014-2950
303.696.2602 fax 303.696.0812
www.ssgroupinc.com
SSG Project Number: 10046.00

BNSF Railway Company 9101 Yosemite Irondale, CO 80640	BNSF RAILWAY	REV	DATE	DESCRIPTION
AECOM USA, Inc. 717 Seventeenth Street, Suite 2000 Denver, CO 80202 T 303.228.3000 F 303.228.3001 www.aecom.com	AECOM			
DESIGNED	SCS			
CHECKED	SCS			
DRAWN	KAT			
APPROVED	SCS			
PROJECT	XXXX			
DATE	07/25/2012			
PROJ. NO.				
STATUS	DEV. PLAN			

COLORADO DIVISION BRUSH SUBDIVISION LINE SEGMENT 2		
NO.	DESCRIPTION	DATE

BNSF
RAILWAY

BNSF IRONDALE AUTOMOTIVE STAGING FACILITY

FILE: \$FILES\$ SHEET 23 DATE: 07/25/2012

CITY COUNCIL CERTIFICATE:
APPROVED BY THE CITY COUNCIL
OF THE CITY OF COMMERCE CITY
THIS ___ DAY OF _____
A.D. _____

CITY SIGNATURE _____

DATE OF PREPARATION:
MAY 14, 2012

SUBSEQUENT RESUBMITTAL:
JULY 25, 2012

ASSESSOR'S PIN:
172121401002, 172121005015,
AND 172121005019

DATE: TIME: USER: BY: USER: FILE: \$FILES\$

