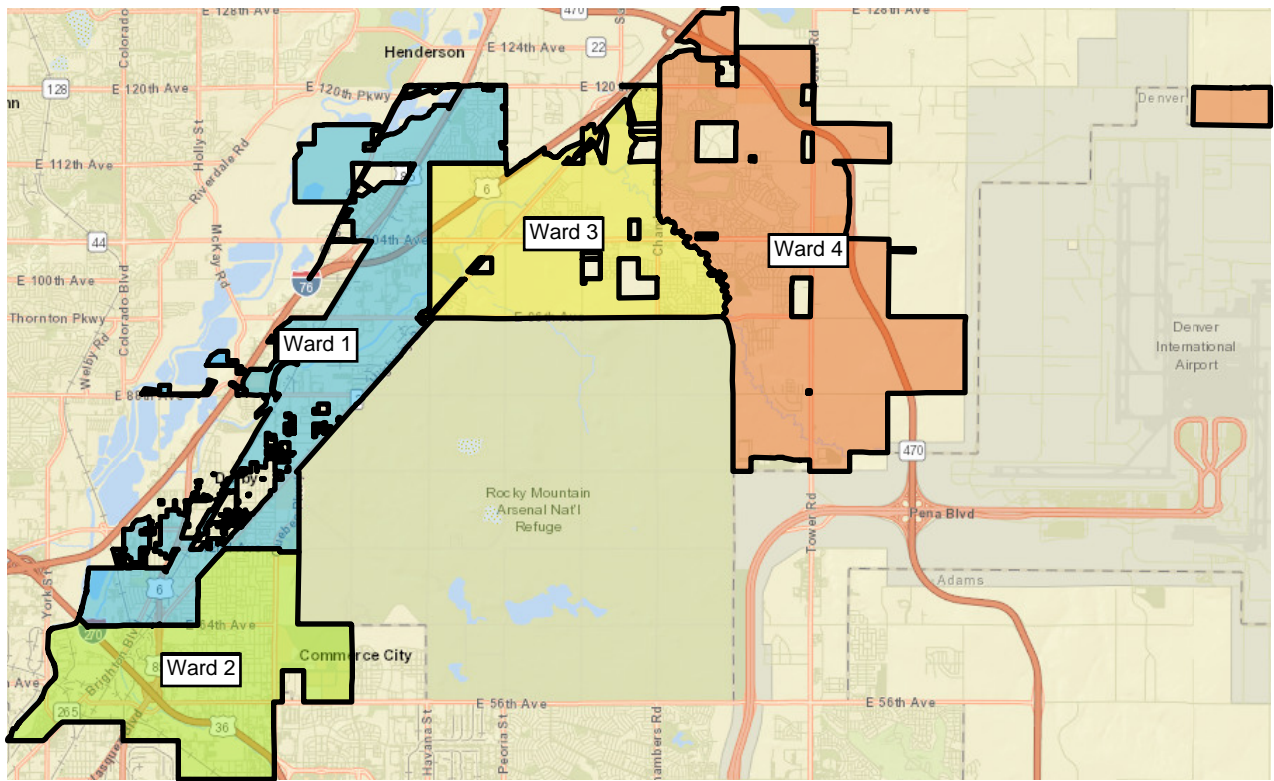
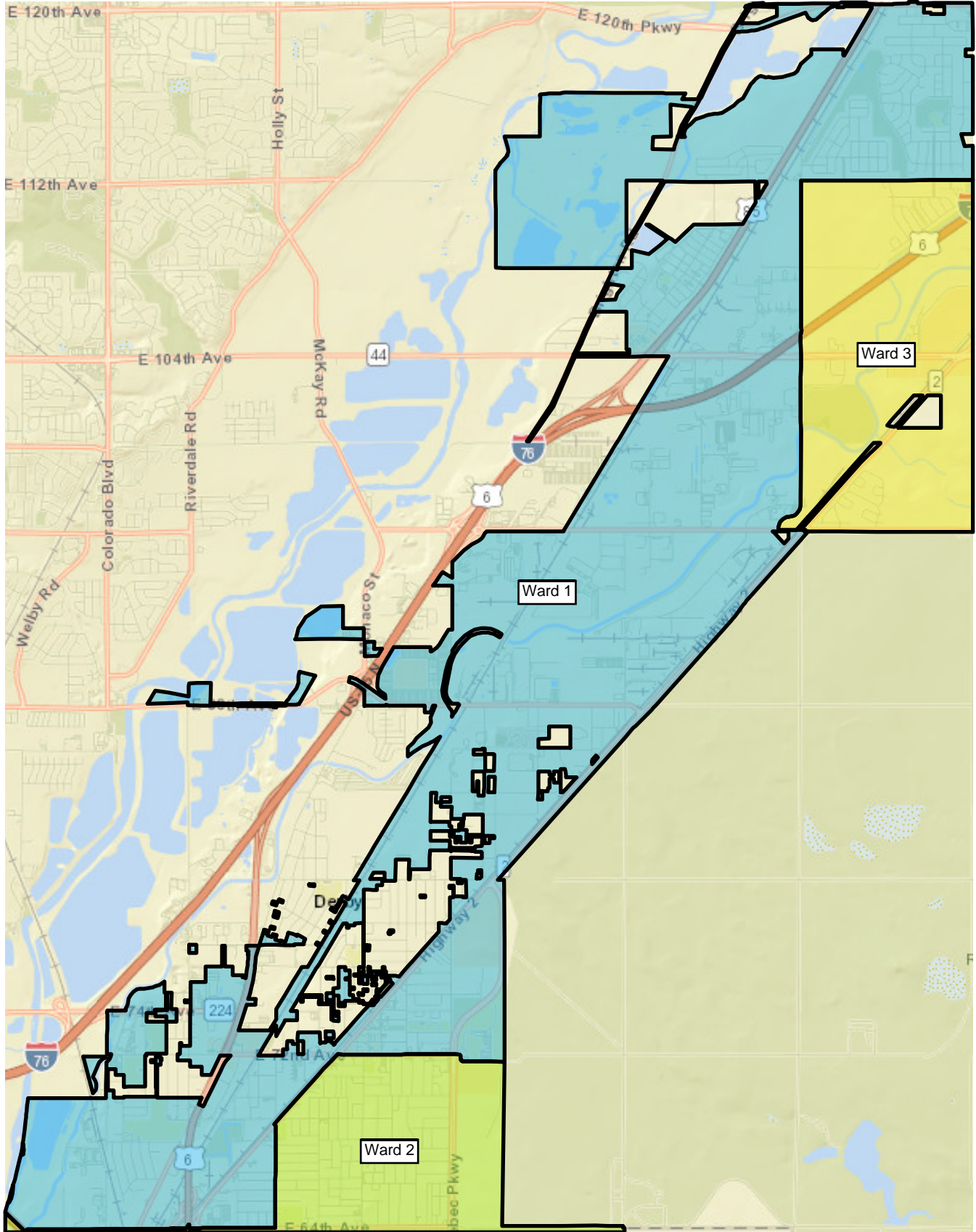
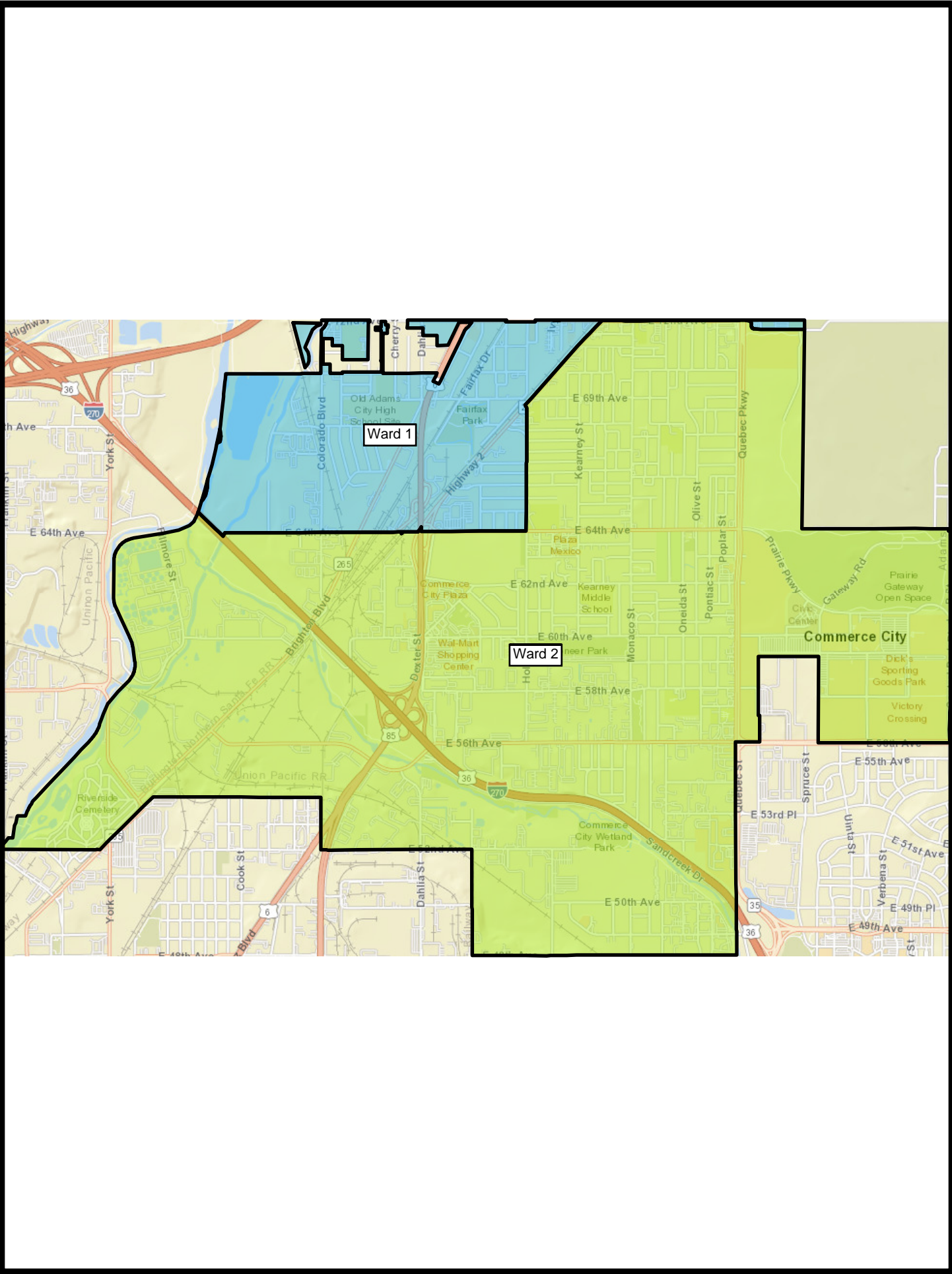
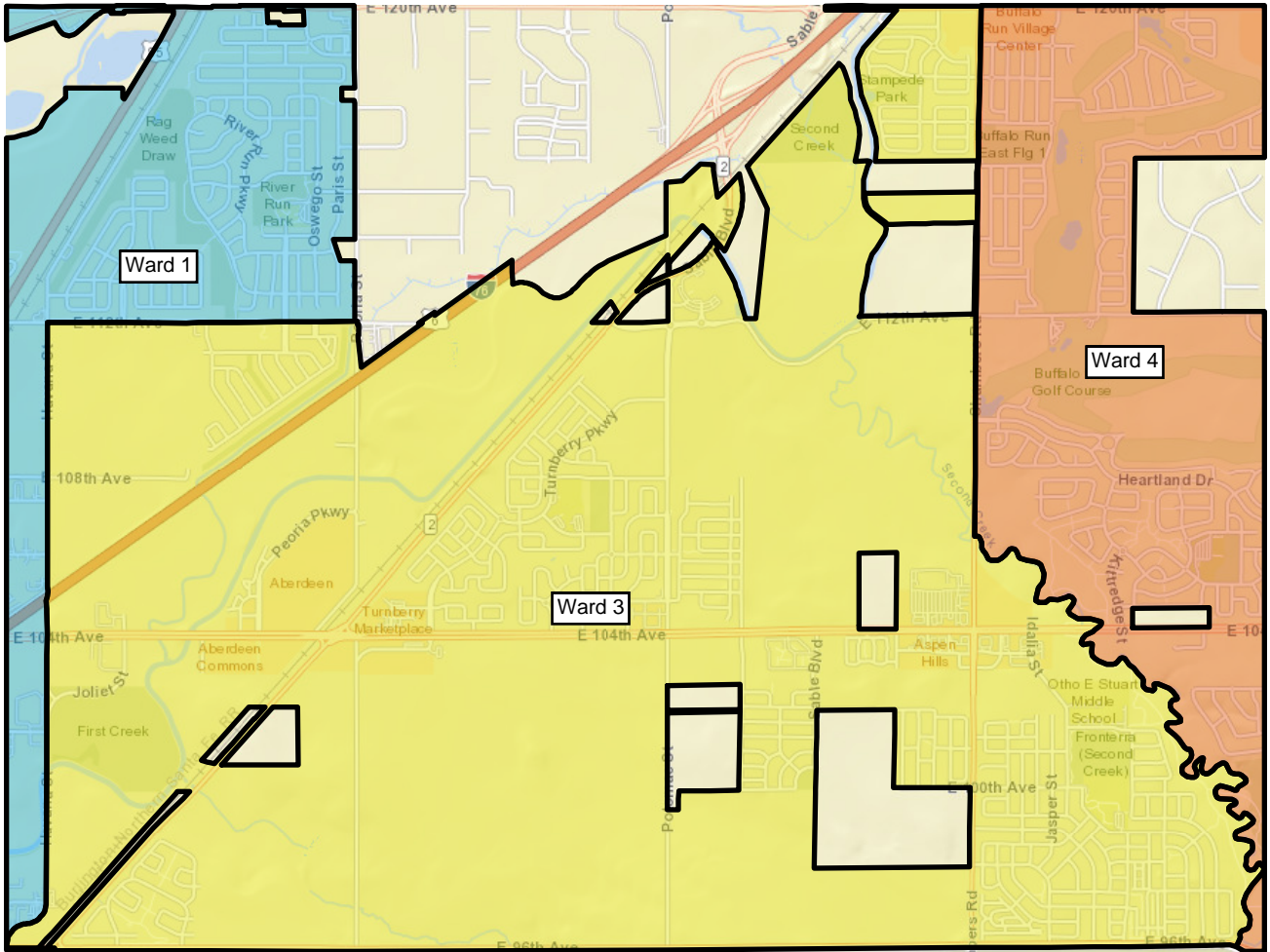


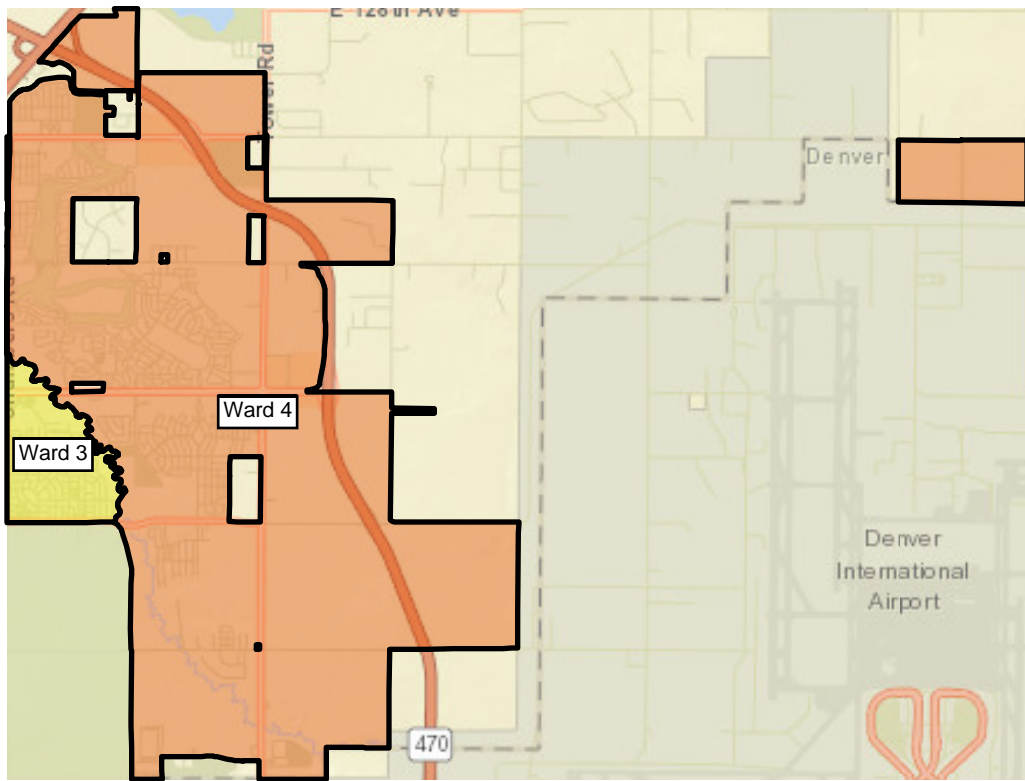
PLAN 3











Population Summary Report

Ward No.	TOTAL Population	Target Population	Target Deviation	Target Deviation (%)	Total (%)	Hispanic (%)	Non-Hispanic (%)	Non-Hispanic white (%)	Non-Hispanic black (%)	White (%)	Black (%)
1	15,370	15,605	-235	-1.51	24.62%	55.22%	44.78%	35.91%	2.74%	48.84%	3.16%
2	15,514	15,605	-91	-0.58	24.86%	71.90%	28.10%	21.41%	3.71%	36.70%	4.31%
3	15,465	15,605	-140	-0.90	24.78%	40.65%	59.35%	45.38%	5.38%	55.98%	6.09%
4	16,069	15,605	464	2.97	25.74%	28.47%	71.53%	55.86%	6.12%	63.42%	6.62%

TOTAL Population:	62,418
Mean Target Population:	15,605
Mean Deviation:	233
Mean Percent Deviation:	1.49
Largest Positive Deviation:	464
Largest Negative Deviation:	-235
Overall Range in Deviation:	699
Overall Range in Deviation Percentage:	4.48

All Districts Summary Report

Ward No.	1
Total Population	15,370
Total Population 18+	10,787
Deviation	-235
Dev. %	-1.506

	Total Hispanic	Total Non-Hispanic	Total	Hispanic	Non-Hispanic	Non-Hispanic white	Non-Hispanic black	White	Black
Total	8,488	6,882	15,370	8,488	6,882	5,519	421	7,507	485
Total%	55.22	44.78	100.00	55.22	44.78	35.91	2.74	48.84	3.16
Total18+	5,551	5,236	15,370	5,551	5,236	4,298	269	5,530	293
Total18+%	51.46	48.54	142.49	51.46	48.54	39.84	2.49	51.27	2.72

Ward No.	2
Total Population	15,514
Total Population 18+	10,953
Deviation	-91
Dev. %	-0.583

	Total Hispanic	Total Non-Hispanic	Total	Hispanic	Non-Hispanic	Non-Hispanic white	Non-Hispanic black	White	Black
Total	11,155	4,359	15,514	11,155	4,359	3,322	576	5,693	668
Total%	71.90	28.10	100.00	71.90	28.10	21.41	3.71	36.70	4.31
Total18+	7,379	3,574	15,514	7,379	3,574	2,822	386	4,332	430
Total18+%	67.37	32.63	141.64	67.37	32.63	25.76	3.52	39.55	3.93

Ward No. 3

Total Population 15,465

Total Population 18+ 10,563

Deviation -140

Dev. % -0.897

	Total Hispanic	Total Non-Hispanic	Total	Hispanic	Non-Hispanic	Non-Hispanic white	Non-Hispanic black	White	Black
Total	6,287	9,178	15,465	6,287	9,178	7,018	832	8,658	942
Total%	40.65	59.35	100.00	40.65	59.35	45.38	5.38	55.98	6.09
Total18+	3,883	6,680	15,465	3,883	6,680	5,213	550	6,162	594
Total18+%	36.76	63.24	146.41	36.76	63.24	49.35	5.21	58.34	5.62

Ward No. 4

Total Population 16,069

Total Population 18+ 11,203

Deviation 464

Dev. % 2.973

	Total Hispanic	Total Non-Hispanic	Total	Hispanic	Non-Hispanic	Non-Hispanic white	Non-Hispanic black	White	Black
Total	4,575	11,494	16,069	4,575	11,494	8,976	983	10,191	1,064
Total%	28.47	71.53	100.00	28.47	71.53	55.86	6.12	63.42	6.62
Total18+	2,882	8,321	16,069	2,882	8,321	6,623	638	7,364	657
Total18+%	25.73	74.27	143.43	25.73	74.27	59.12	5.69	65.73	5.86

District Statistical Report

Ward No.	TOTAL Population	Target Population	Target Deviation	Target Deviation (%)	Total	Hispanic	Non-Hispanic	Non-Hispanic white	Non-Hispanic black	White	Black
1	15,370	15,605	-235	-1.51	15,370	8,488	6,882	5,519	421	7,507	485
					24.62%	55.22%	44.78%	35.91%	2.74%	48.84%	3.16%
2	15,514	15,605	-91	-0.58	15,514	11,155	4,359	3,322	576	5,693	668
					24.86%	71.90%	28.10%	21.41%	3.71%	36.70%	4.31%
3	15,465	15,605	-140	-0.90	15,465	6,287	9,178	7,018	832	8,658	942
					24.78%	40.65%	59.35%	45.38%	5.38%	55.98%	6.09%
4	16,069	15,605	464	2.97	16,069	4,575	11,494	8,976	983	10,191	1,064
					25.74%	28.47%	71.53%	55.86%	6.12%	63.42%	6.62%

District Compactness Report

District	Polygon Area (sq. mi)	Perimeter (mi)	Reock	Area/Convex Hull	Grofman	Schwartzberg	Polsby Popper	Holes
Unassigned	0	0	0	0	0	0	0	0
1	9.04	68.85	0.14	0.46	22.9	6.46	0.02	28
2	7.12	16.14	0.4	0.7	6.05	1.71	0.34	0
3	7.09	27.92	0.44	0.75	10.49	2.96	0.11	9
4	13.2	35.02	0.22	0.43	9.64	2.72	0.14	7

