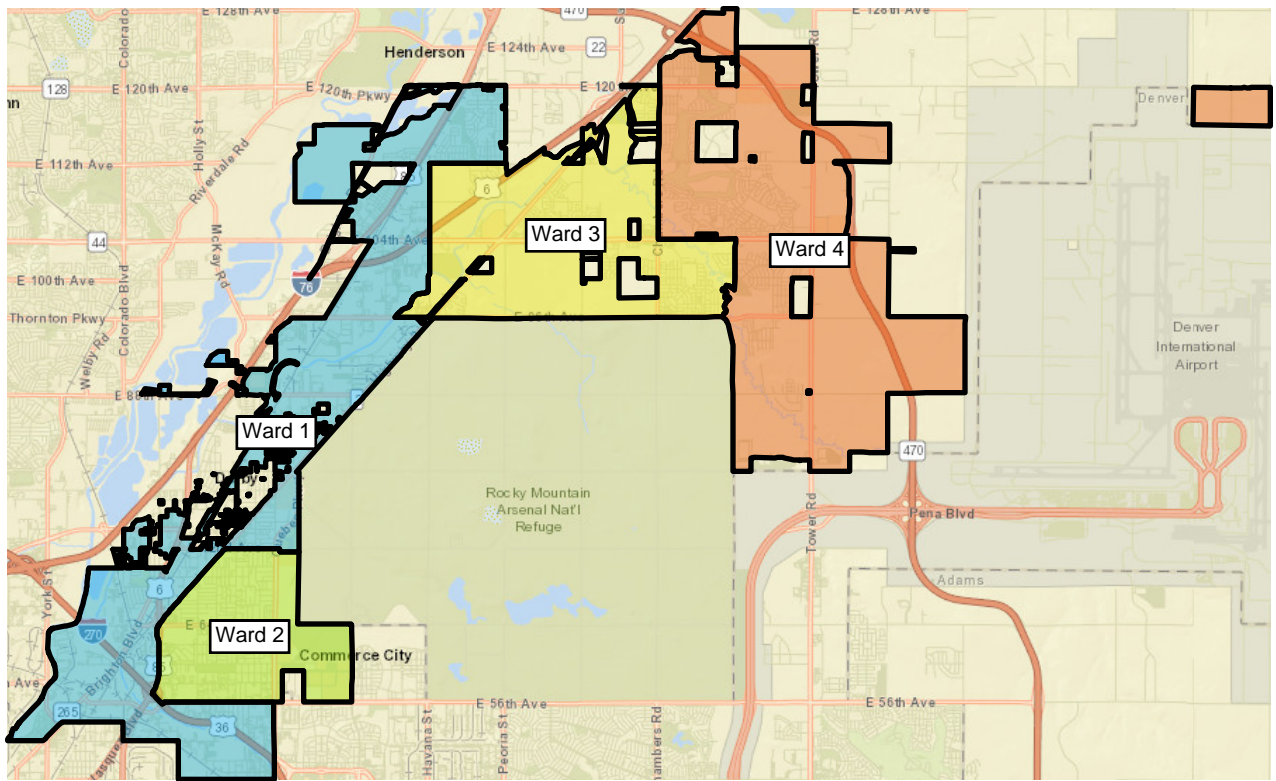
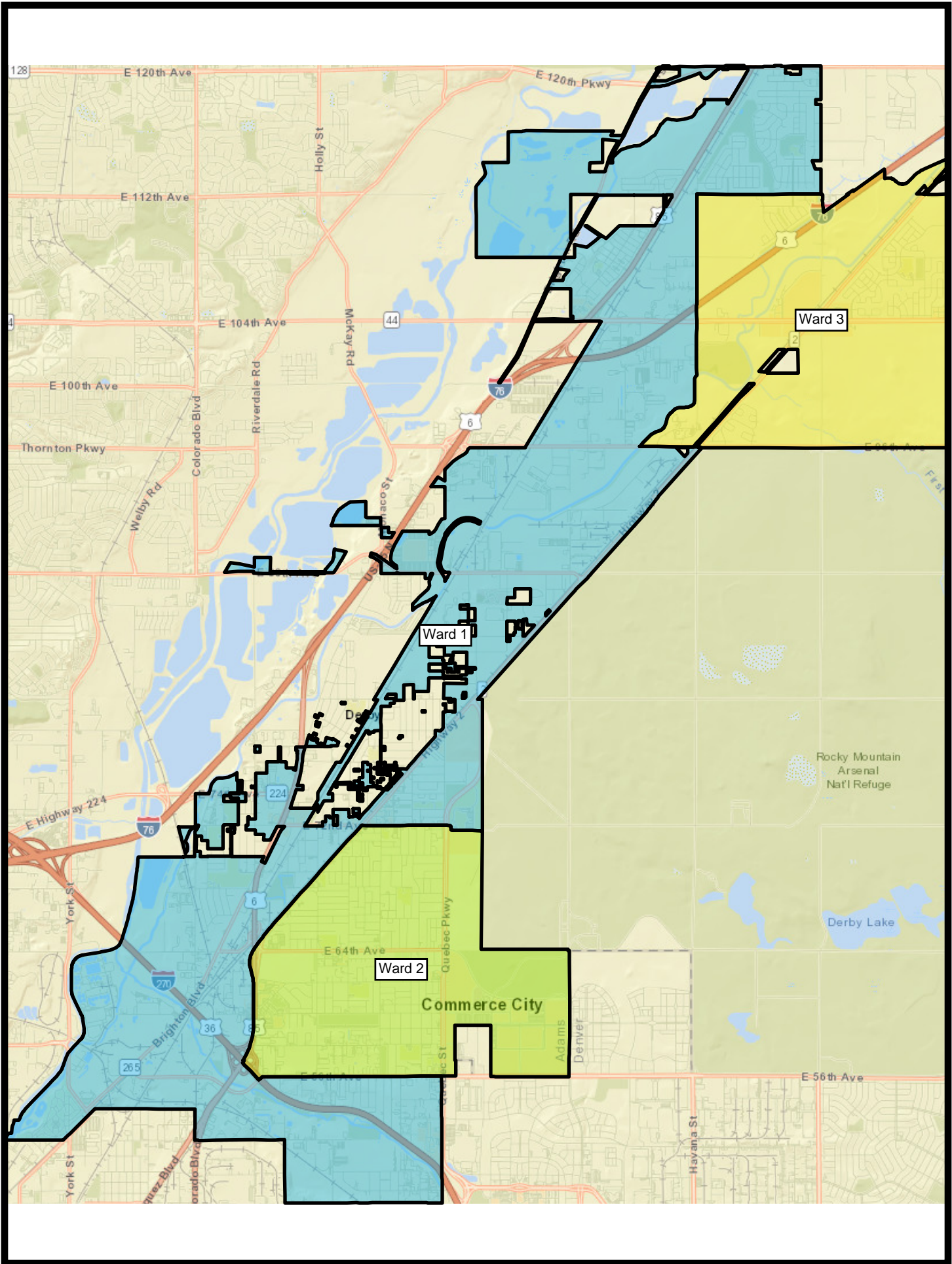
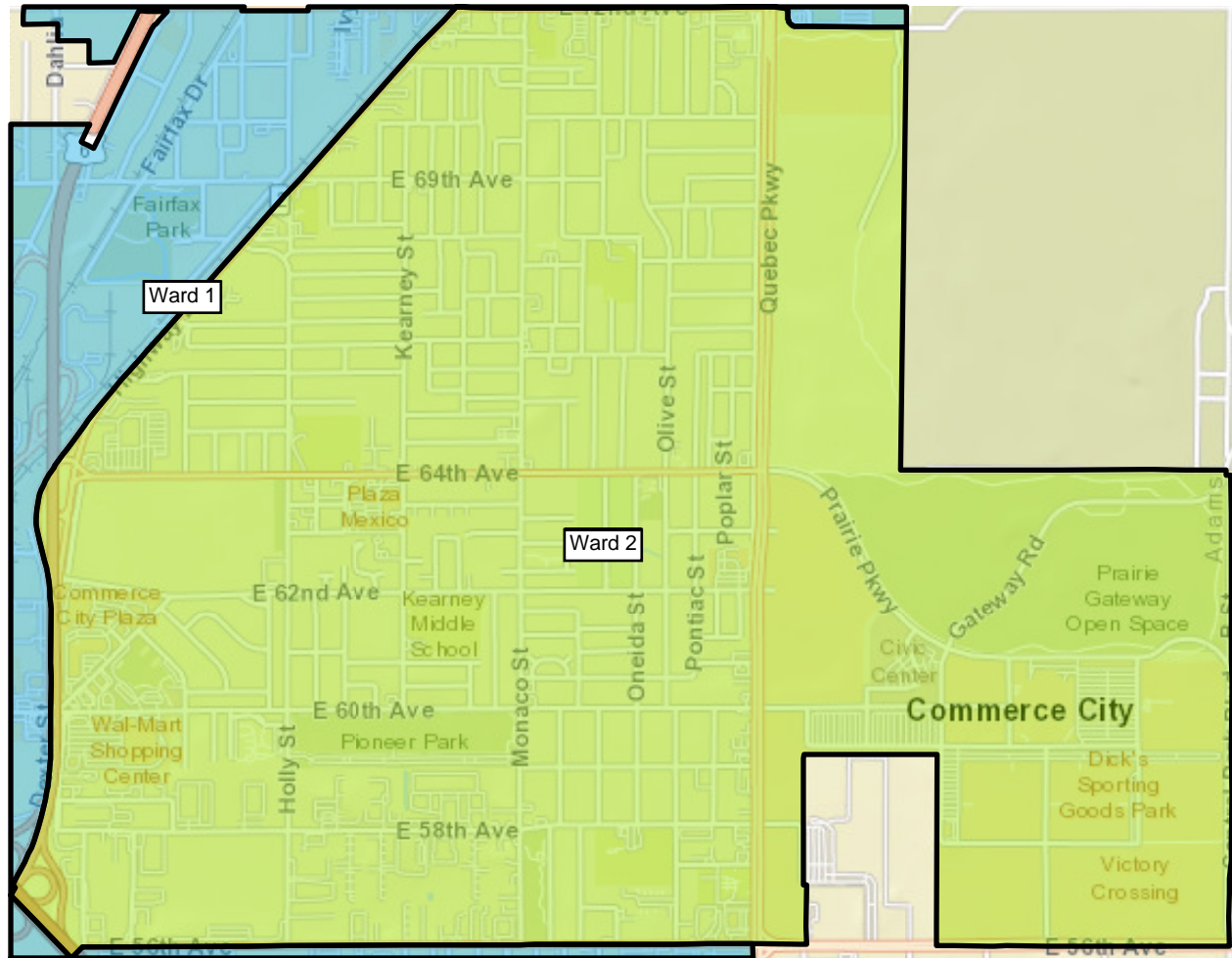
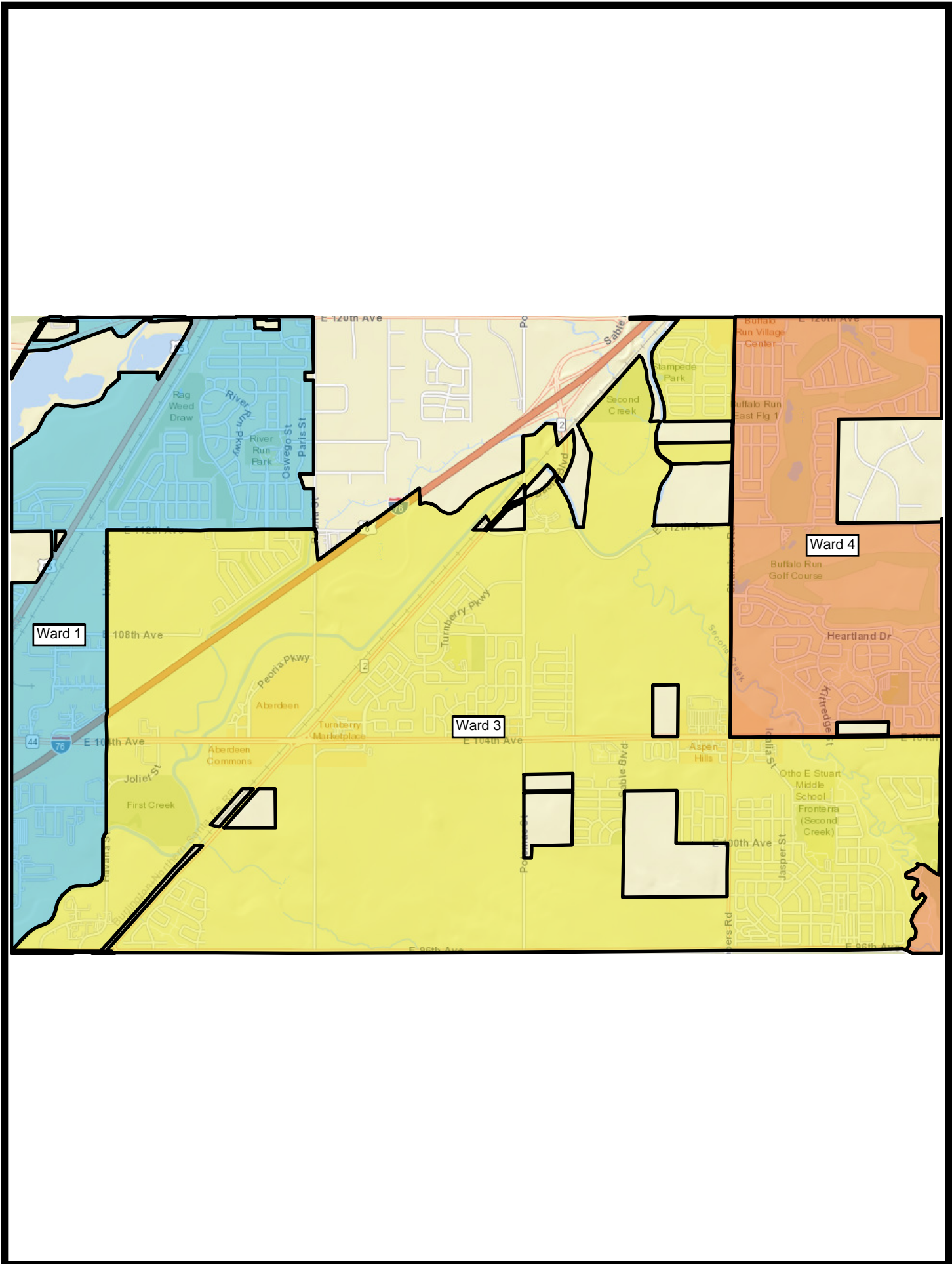


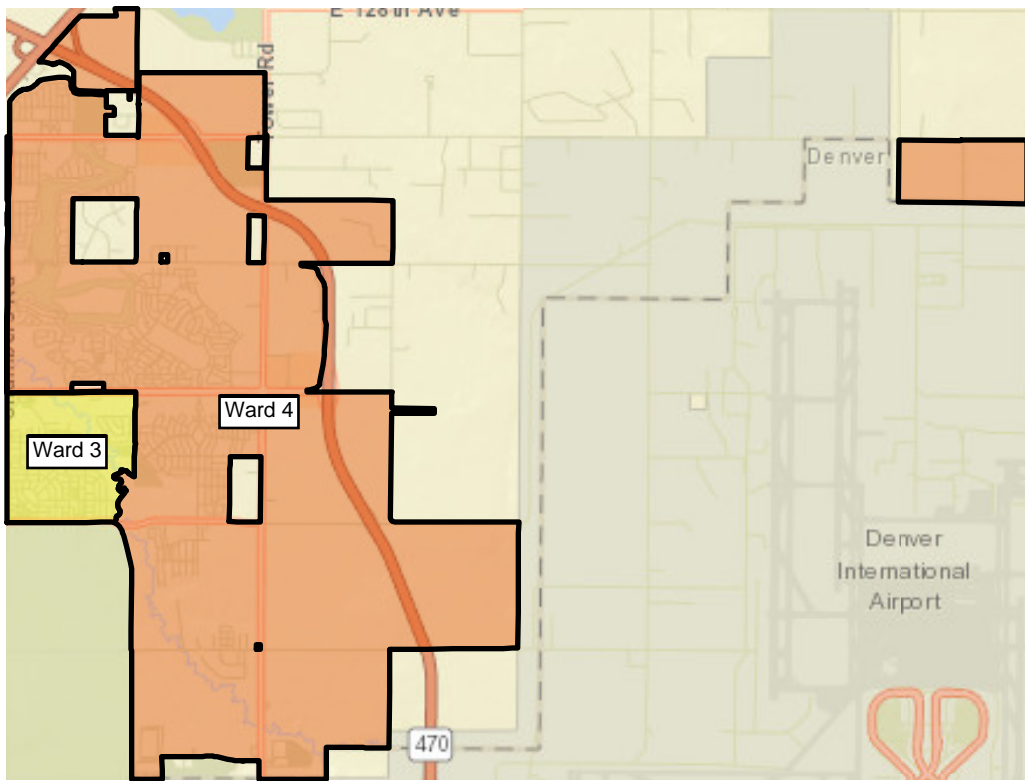
# PLAN 2











## Population Summary Report

Ward No.	TOTAL Population	Target Population	Target Deviation	Target Deviation (%)	Total (%)	Hispanic (%)	Non-Hispanic (%)	Non-Hispanic white (%)	Non-Hispanic black (%)	White (%)	Black (%)
1	15,226	15,605	-379	-2.43	24.39%	54.74%	45.26%	36.33%	2.75%	49.15%	3.22%
2	15,658	15,605	53	0.34	25.09%	72.22%	27.78%	21.13%	3.70%	36.51%	4.23%
3	16,056	15,605	451	2.89	25.72%	40.15%	59.85%	45.91%	5.31%	56.37%	5.99%
4	15,478	15,605	-127	-0.81	24.80%	28.53%	71.47%	55.71%	6.22%	63.30%	6.75%

<b>TOTAL Population:</b>	<b>62,418</b>
Mean Target Population:	15,605
Mean Deviation:	253
Mean Percent Deviation:	1.62
Largest Positive Deviation:	451
Largest Negative Deviation:	-379
Overall Range in Deviation:	830
Overall Range in Deviation Percentage:	5.32

# All Districts Summary Report

## Ward No. 1

Total Population 15,226

Total Population 18+ 10,700

Deviation -379

Dev. % -2.429

	Total Hispanic	Total Non-Hispanic	Total	Hispanic	Non-Hispanic	Non-Hispanic white	Non-Hispanic black	White	Black
Total	8,335	6,891	15,226	8,335	6,891	5,532	418	7,483	491
Total%	54.74	45.26	100.00	54.74	45.26	36.33	2.75	49.15	3.22
Total18+	5,458	5,242	15,226	5,458	5,242	4,312	265	5,524	292
Total18+%	51.01	48.99	142.30	51.01	48.99	40.30	2.48	51.63	2.73

## Ward No. 2

Total Population 15,658

Total Population 18+ 11,040

Deviation 53

Dev. % 0.34

	Total Hispanic	Total Non-Hispanic	Total	Hispanic	Non-Hispanic	Non-Hispanic white	Non-Hispanic black	White	Black
Total	11,308	4,350	15,658	11,308	4,350	3,309	579	5,717	662
Total%	72.22	27.78	100.00	72.22	27.78	21.13	3.70	36.51	4.23
Total18+	7,472	3,568	15,658	7,472	3,568	2,808	390	4,338	431
Total18+%	67.68	32.32	141.83	67.68	32.32	25.43	3.53	39.29	3.90

**Ward No. 3**

Total Population 16,056

Total Population 18+ 10,987

Deviation 451

Dev. % 2.89

	Total Hispanic	Total Non-Hispanic	Total	Hispanic	Non-Hispanic	Non-Hispanic white	Non-Hispanic black	White	Black
Total	6,446	9,610	16,056	6,446	9,610	7,371	852	9,051	962
Total%	40.15	59.85	100.00	40.15	59.85	45.91	5.31	56.37	5.99
Total18+	3,983	7,004	16,056	3,983	7,004	5,487	563	6,464	607
Total18+%	36.25	63.75	146.14	36.25	63.75	49.94	5.12	58.83	5.52

**Ward No. 4**

Total Population 15,478

Total Population 18+ 10,779

Deviation -127

Dev. % -0.814

	Total Hispanic	Total Non-Hispanic	Total	Hispanic	Non-Hispanic	Non-Hispanic white	Non-Hispanic black	White	Black
Total	4,416	11,062	15,478	4,416	11,062	8,623	963	9,798	1,044
Total%	28.53	71.47	100.00	28.53	71.47	55.71	6.22	63.30	6.75
Total18+	2,782	7,997	15,478	2,782	7,997	6,349	625	7,062	644
Total18+%	25.81	74.19	143.59	25.81	74.19	58.90	5.80	65.52	5.97



## District Statistical Report

Ward No.	TOTAL Population	Target Population	Target Deviation	Target Deviation (%)	Total	Hispanic	Non-Hispanic	Non-Hispanic white	Non-Hispanic black	White	Black
1	15,226	15,605	-379	-2.43	15,226	8,335	6,891	5,532	418	7,483	491
					24.39%	54.74%	45.26%	36.33%	2.75%	49.15%	3.22%
2	15,658	15,605	53	0.34	15,658	11,308	4,350	3,309	579	5,717	662
					25.09%	72.22%	27.78%	21.13%	3.70%	36.51%	4.23%
3	16,056	15,605	451	2.89	16,056	6,446	9,610	7,371	852	9,051	962
					25.72%	40.15%	59.85%	45.91%	5.31%	56.37%	5.99%
4	15,478	15,605	-127	-0.81	15,478	4,416	11,062	8,623	963	9,798	1,044
					24.80%	28.53%	71.47%	55.71%	6.22%	63.30%	6.75%

# District Compactness Report

District	Polygon Area (sq. mi)	Perimeter (mi)	Reock	Area/Convex Hull	Grofman	Schwartzberg	Polsby Popper	Holes
Unassigned	0	0	0	0	0	0	0	0
1	12.26	78.44	0.14	0.36	22.4	6.32	0.03	28
2	3.81	9.38	0.59	0.88	4.8	1.35	0.54	0
3	7.33	28.45	0.41	0.72	10.51	2.96	0.11	8
4	13.03	34.79	0.21	0.42	9.64	2.72	0.14	7

