

Oil and Gas Update

February 3, 2025

Energy, Equity, and the Environment Division



ERCE CITY

Current Applications

There are no current applications for oil and gas in Commerce City.

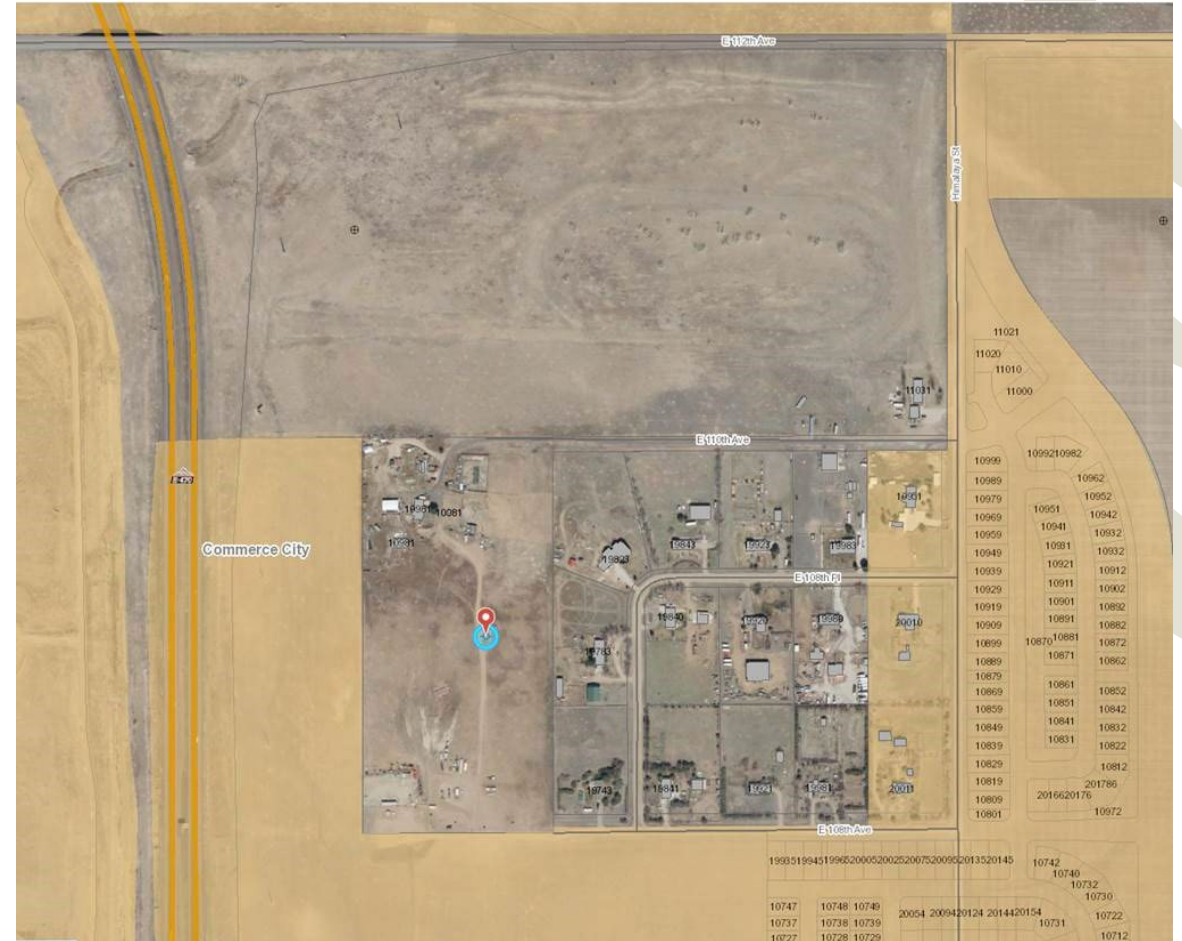
Oil and Gas Notice Update

Over the last two weeks, C3 was approached by Chevron to replug three of their existing plugged and abandoned well sites on Commerce City-owned property and in E-470 right-of-way. These sites were drilled in 1975 and plugged in 2000.

After researching the sites further, we will be meeting with their team in late January/early February.

Adams County Oil and Gas Updates

E3 received notice of a nearby oil and gas well performing maintenance on their property. The notice was received due to the proximity to Commerce City's boundaries. The site is in unincorporated Adams County.



Environmental Exceedance Report

Date	Media Impact	Location/Unit	Summary	Permit Limit	Exceedance
12-Dec-24	Soil	Plant 1, Vacuum Truck	Two Vacuum Truck drivers were in the process of removing a mixture of oily wastewater and solids from Tank 60. During transfer, the vacuum truck hose came loose, and approximately 20 to 25 gallons of the mixture spilled on the ground. The spilled material and all impacted soil were cleaned up and removed within 24 hours, and will be managed and properly disposed of in compliance with 40 CFR Part 261 and 262.	N/A	N/A
19-Nov-24	Air	Plant 1 Tail Gas Incinerator	The Plant 1 Sulfur Recovery Unit No. 1 tripped offline. The bypasses were removed, and the unit was restarted. Due to the trip of the No. 1 SRU, there was a change in the SO2 to H2S ratio in the sulfur recovery unit, which resulted in an exceedance of the 15.68 lbs/hr SO2 emissions limit in the Title V permit.	15.68 lbs/hr	82.24 lbs/hr
19-Nov-24				250 ppmvd SO2	316 ppmvd
17-Nov-24	Air	Plant 2 Main Flare	During startup of the Plant 2 Saturated Gas Plant (SGP), operations opened the feed valve to the unit.... This resulted in an exceedance of our 3-hour rolling 162 ppmv average H2S limit	162 ppmv H2S	260 ppmv H2S

Thank you. Questions?