



Fronterra Neighborhood Park

June 16, 2014

Purpose

- Fronterra Park is the first of three neighborhood parks that are a part of the City's 2K Initiative.
- This presentation is for information purposes only, no City Council action is required.
- The purpose of this presentation is to provide City Council with an overview of the conceptual design for the park prior to completing construction documents.

Overview

- Public Outreach
- Meeting Format and Participation
- Neighborhood Park Features
- Site Context
- Goals
- Public Meeting #1- Initial Ideas
- Public Meeting #2- Alternative Plans
- Conceptual Master Plan
- Construction Bid Dependent Items
- Next Steps



Public Outreach

- Print
 - 700 door hangers within 1/2-mile park radius
 - Boards, fact sheets at events (e.g. Vendor Expo)
- Electronic
 - Email to HOAs, stakeholder list, past attendees
 - City website, city & community calendars
 - Social media 1 week prior, 1 day prior to mtgs
 - Mindmixer online voting & idea submissions
- Communication/Coordination with
27J School District



Public Outreach

- Phone
 - C3-WORKS hotline
- Media
 - Press Release
 - YourHub
 - Commerce City Connect



Commerce
CITY

Meeting Format and Participation

- Meeting #1: May 1
 - Presentation
 - Small breakout group discussion
 - Worksheets to select concept/elements & submit ideas
 - 15 attendees
 - Online participation: 4
- Meeting #2: May 21
 - Presentation
 - Discussion
 - Clicker voting, voting outcome discussion
 - 15 attendees
 - Online participation: 14



Meeting Format and Participation

- Meeting #3: June 11
 - Interactive walking tour
 - Show-and-tell of park concept, element locations
 - Discussion with project team and attendees



Commerce
CITY

Neighborhood Park Features

- Minimum 2 graded playfields (may overlap with adjacent school site)
- Playgrounds
- Picnic areas with shelters
- Hard Court Areas



Neighborhood Park Features

- Walking/ jogging paths
- Low level lighting for safety
- Restroom/ Drinking Fountain



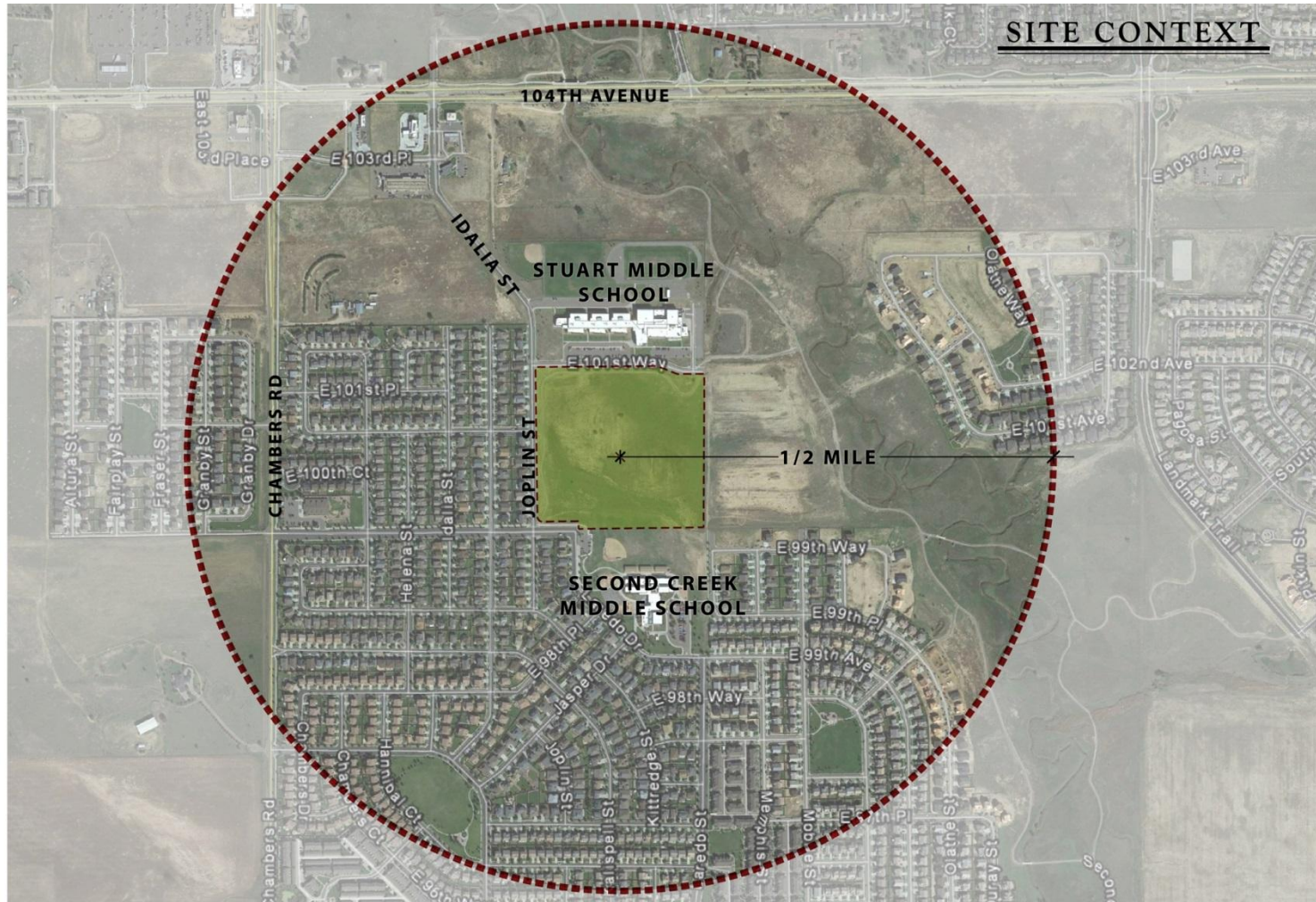
Neighborhood Park Features

Neighborhood parks would not include activities or elements found in a large community park such as:

- Lighted baseball/ softball fields
- Swimming pools/ spray grounds

Neighborhood parks would not have large skate parks intended to serve the community beyond the immediate neighborhood.

Site Context



Goals

- Establish community vision with programming possibilities
- Provide range of active and passive recreational and leisure opportunities for residences of all ages and abilities
- Provide sustainable design including water conserving landscapes
- Provide accessible (ADA) walks and park facilities
- Provide strong connections to adjacent schools and Second Creek



Commerce
CITY

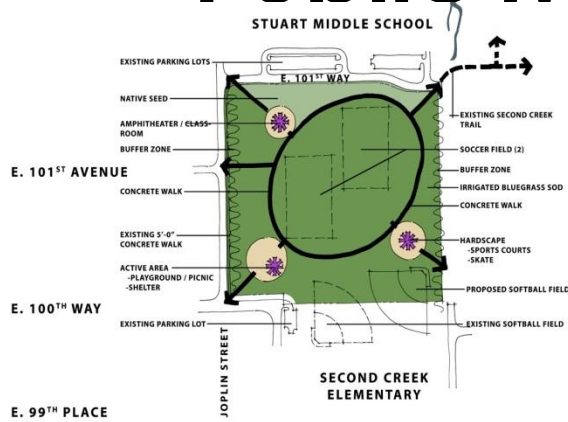
Goals

- Explore opportunity for shared parking and minimizing the impact of traffic
- Provide a diverse and aesthetically pleasing setting
- Design with respect to neighboring properties
- Provide a safe and highly visible neighborhood park setting
- Create a unique theme or identity for the neighborhood



Commerce
CITY

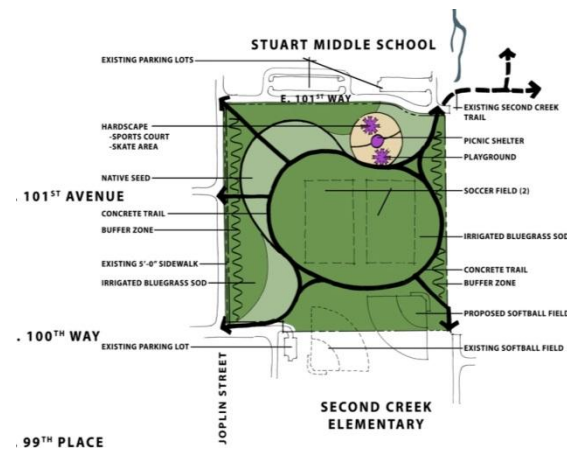
Public Meeting #1-Initial Ideas



Concept A: Traditional

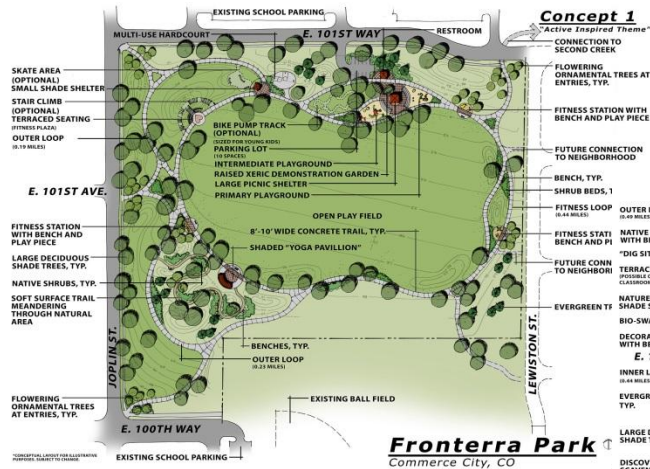


Concept B: Active



Concept C: Nature-inspired

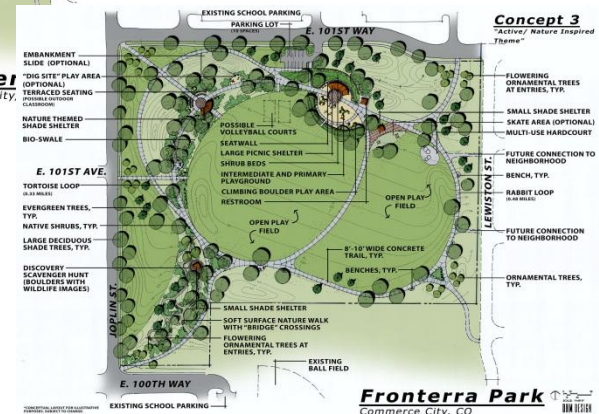
Public Meeting #2- Alternative Plans



Concept 1:
Active Inspired Theme



Concept 2:
Nature Inspired Theme



Concept 3: -Hybrid
Active/Nature Inspired Theme

Public Meeting #2

Optional Park Elements

#1 Hillside Slide

#2 Small Skate Area



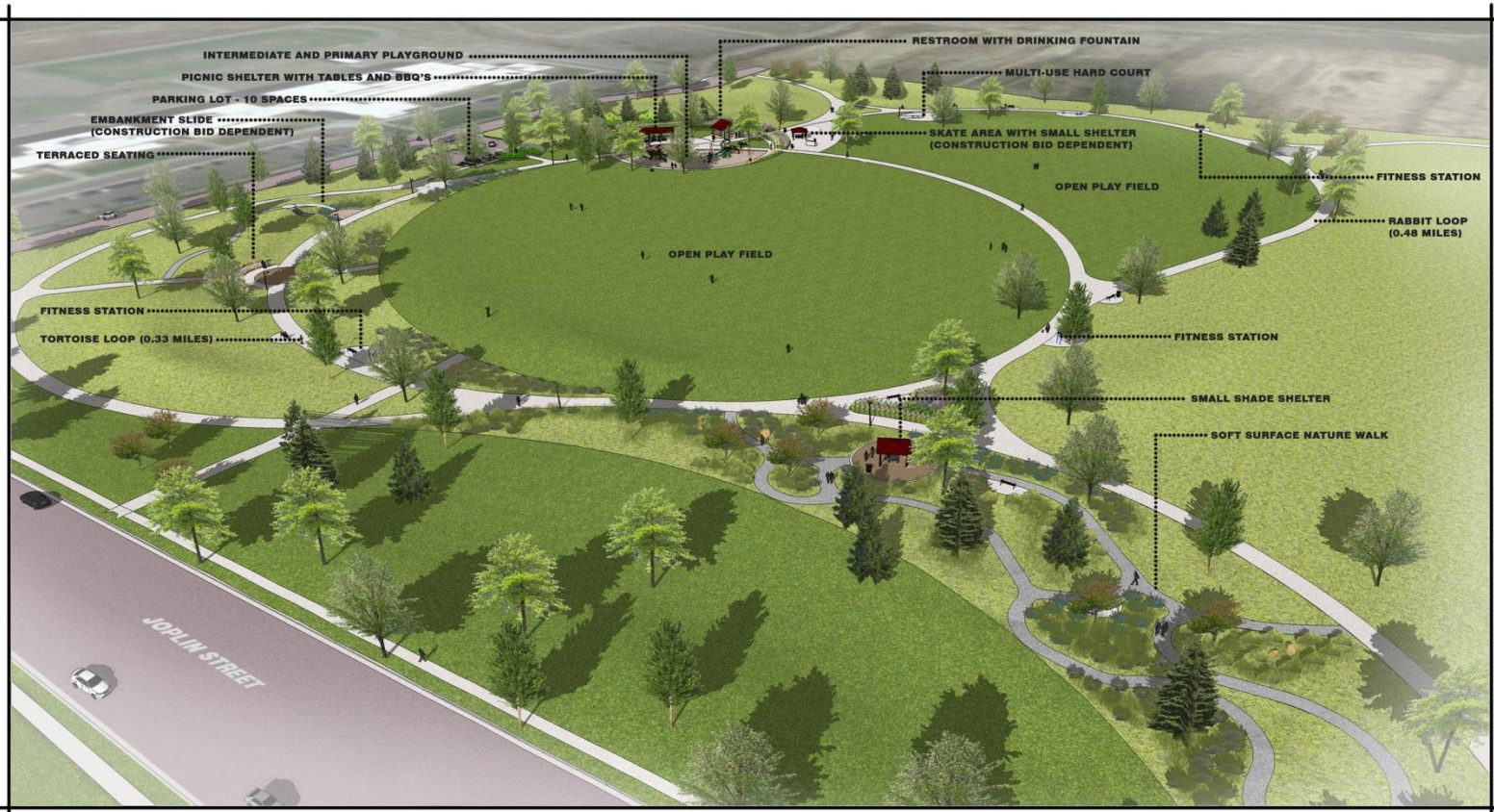
Conceptual Master Plan



Fronterra Park DNW DESIGN
Commerce City, Colorado June 2014



Conceptual Master Plan



BIRD'S-EYE-VIEW LOOKING NORTHEAST



Fronterra Park
Commerce City, Colorado

DNW DESIGN



Commerce
CITY

Quality Community for a Lifetime • c3gov.com

Conceptual Master Plan



PLAYGROUND/PICNIC AREA - VIEW LOOKING NORTH



Fronterra Park
Commerce City, Colorado

DWM DESIGN

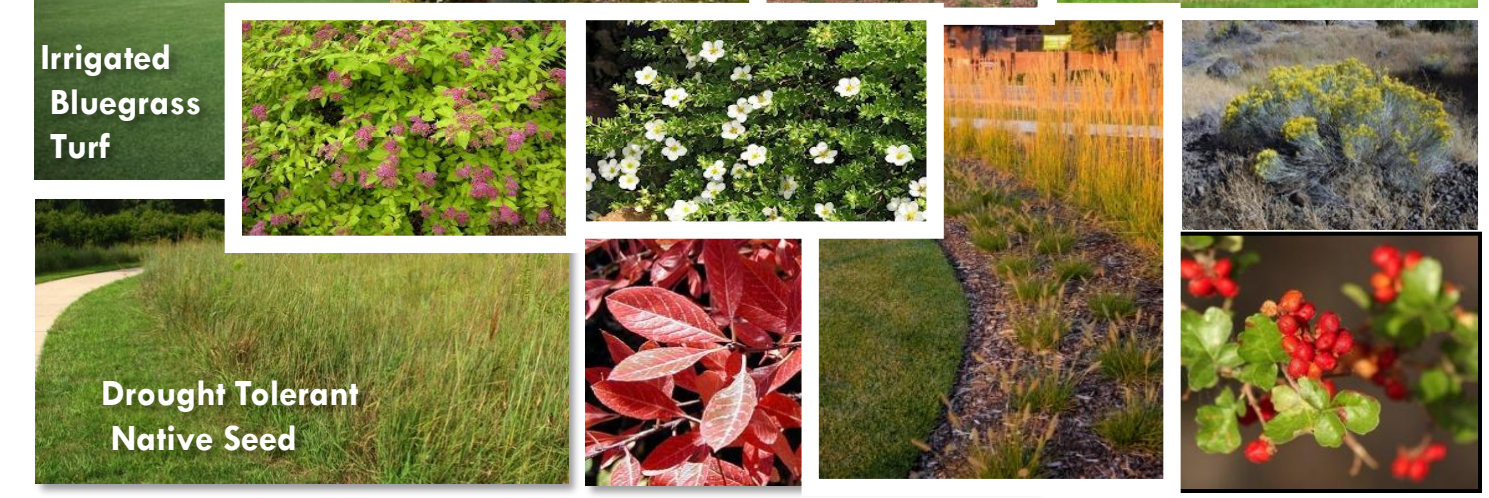


Conceptual Master Plan



Conceptual Master Plan





Construction Bid Dependent Items

Hillside Slide

Skate Area and Associated Shelter



Next Steps

- Prepare Construction Documents
- Bidding late 2014
- Start Construction Early 2015
- Complete Construction Late 2015 (Pending weather)



Commerce
CITY

Questions



Commerce
CITY