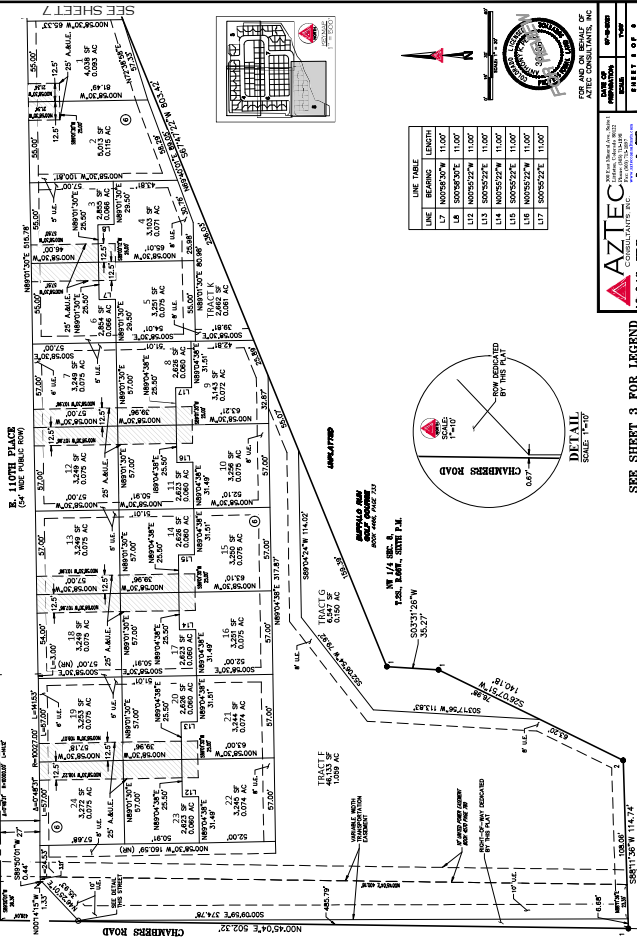


**REUNION FILING NO. 38**  
 A PORTION OF THE NORTHWEST 1/4 OF SECTION 8,  
 TOWNSHIP 2 SOUTH, RANGE 66 WEST OF THE SIXTH PRINCIPAL MERIDIAN,  
 CITY OF COMMERCE CITY, COUNTY OF ADAMS, STATE OF COLORADO

SEE SHEET 6



SEE SHEET 3 FOR LEGEND

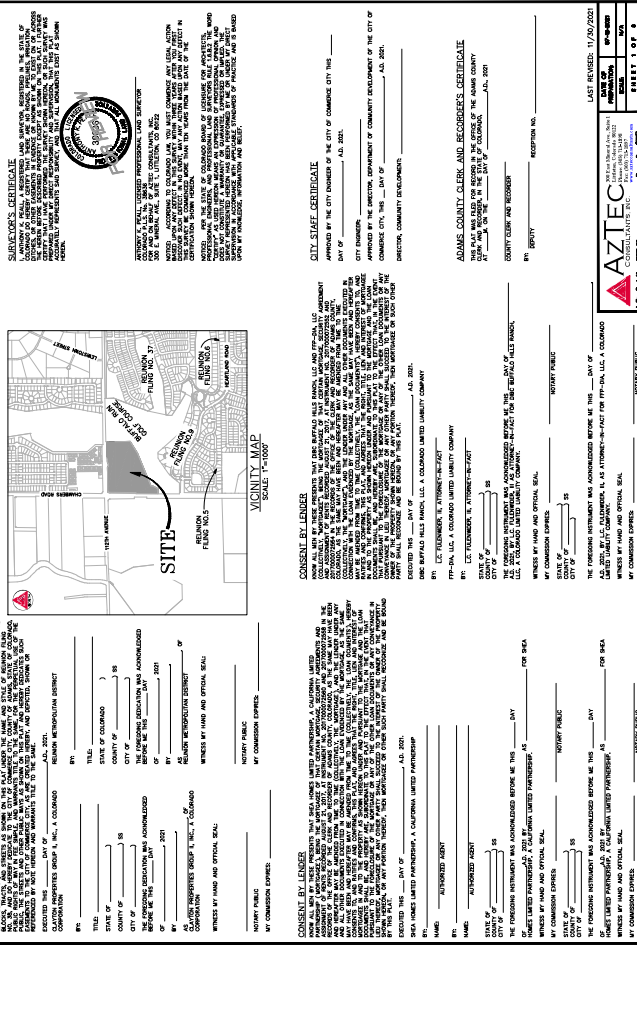
FOR AND ON BEHALF OF  
 THE BOARD OF COUNTY COMMISSIONERS  
 COUNTY OF ADAMS, COLORADO

**AZTEC**  
 CENTRAL PLATE, INC.  
 1000 N. 10TH ST., SUITE 100  
 DENVER, CO 80202

DATE OF PREPARATION: \_\_\_\_\_  
 DATE OF RECORDATION: \_\_\_\_\_  
 SHEET 1 OF 3

**REUNION FILING NO. 38**  
 A PORTION OF THE NORTHWEST 1/4 OF SECTION 8,  
 TOWNSHIP 2 SOUTH, RANGE 66 WEST OF THE SIXTH PRINCIPAL MERIDIAN,  
 CITY OF COMMERCE CITY, COUNTY OF ADAMS, STATE OF COLORADO

SEE SHEET 7



FOR AND ON BEHALF OF  
 THE BOARD OF COUNTY COMMISSIONERS  
 COUNTY OF ADAMS, COLORADO

**AZTEC**  
 CENTRAL PLATE, INC.  
 1000 N. 10TH ST., SUITE 100  
 DENVER, CO 80202

DATE OF PREPARATION: \_\_\_\_\_  
 DATE OF RECORDATION: \_\_\_\_\_  
 SHEET 1 OF 3

**DECLARATION STATEMENT**

I, the undersigned, being duly qualified under the laws of the State of Colorado, do hereby certify that the foregoing plat is a true and correct copy of the original plat on file in the office of the County Clerk and Recorder, Adams County, Colorado, and that the same has been duly recorded in the office of the County Clerk and Recorder, Adams County, Colorado, and that the same is a true and correct copy of the original plat on file in the office of the County Clerk and Recorder, Adams County, Colorado, and that the same is a true and correct copy of the original plat on file in the office of the County Clerk and Recorder, Adams County, Colorado.

**CONSULTING ENGINEER**

NAME: \_\_\_\_\_  
 STATE OF COLORADO: \_\_\_\_\_  
 COUNTY OF: \_\_\_\_\_  
 CITY OF: \_\_\_\_\_  
 BEARING: \_\_\_\_\_  
 DISTANCE: \_\_\_\_\_  
 AREA: \_\_\_\_\_  
 WITNESSES BY HAND AND OFFICIAL SEAL: \_\_\_\_\_  
 MY COMMISSION EXPIRES: \_\_\_\_\_

**CONSULTING SURVEYOR**

NAME: \_\_\_\_\_  
 STATE OF COLORADO: \_\_\_\_\_  
 COUNTY OF: \_\_\_\_\_  
 CITY OF: \_\_\_\_\_  
 BEARING: \_\_\_\_\_  
 DISTANCE: \_\_\_\_\_  
 AREA: \_\_\_\_\_  
 WITNESSES BY HAND AND OFFICIAL SEAL: \_\_\_\_\_  
 MY COMMISSION EXPIRES: \_\_\_\_\_

**CONVEYOR BY INSTRUMENT**

NAME: \_\_\_\_\_  
 STATE OF COLORADO: \_\_\_\_\_  
 COUNTY OF: \_\_\_\_\_  
 CITY OF: \_\_\_\_\_  
 BEARING: \_\_\_\_\_  
 DISTANCE: \_\_\_\_\_  
 AREA: \_\_\_\_\_  
 WITNESSES BY HAND AND OFFICIAL SEAL: \_\_\_\_\_  
 MY COMMISSION EXPIRES: \_\_\_\_\_

**RECIPIENT BY INSTRUMENT**

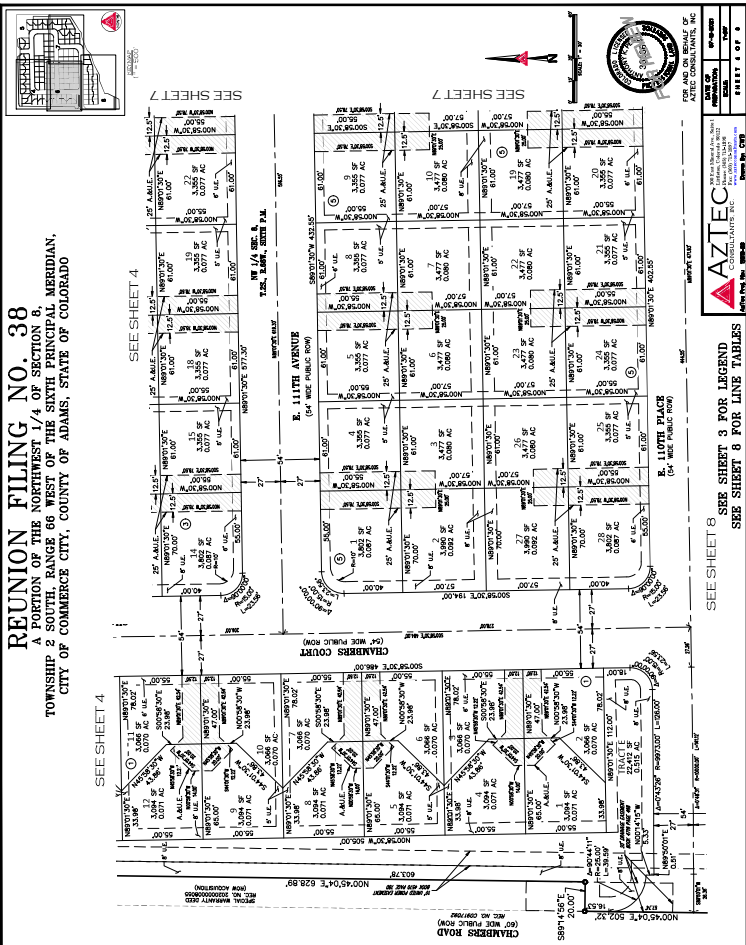
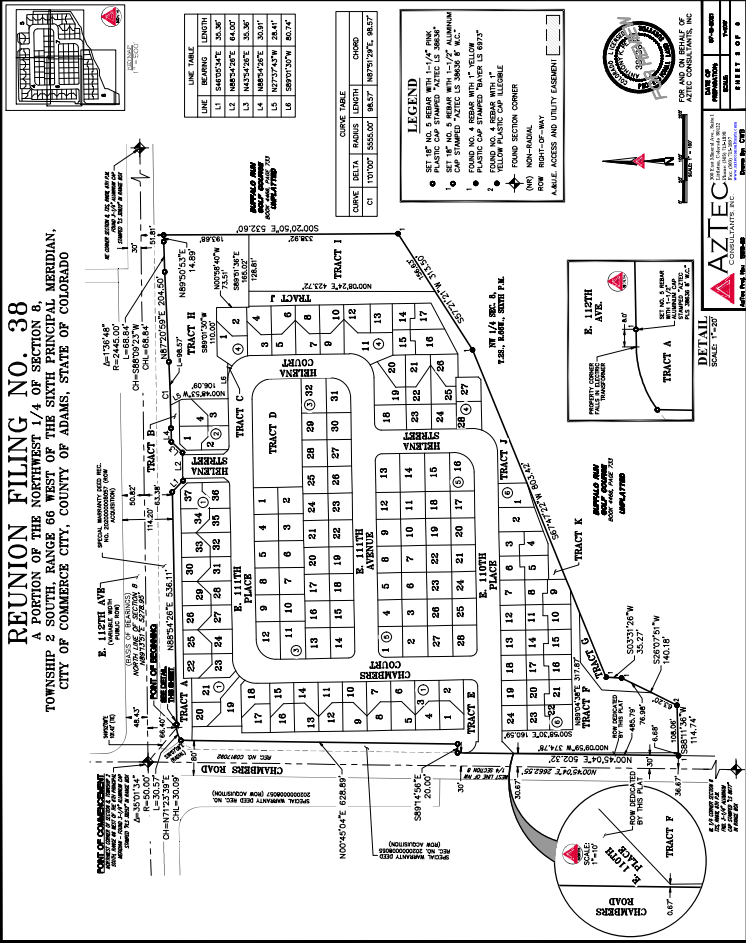
NAME: \_\_\_\_\_  
 STATE OF COLORADO: \_\_\_\_\_  
 COUNTY OF: \_\_\_\_\_  
 CITY OF: \_\_\_\_\_  
 BEARING: \_\_\_\_\_  
 DISTANCE: \_\_\_\_\_  
 AREA: \_\_\_\_\_  
 WITNESSES BY HAND AND OFFICIAL SEAL: \_\_\_\_\_  
 MY COMMISSION EXPIRES: \_\_\_\_\_

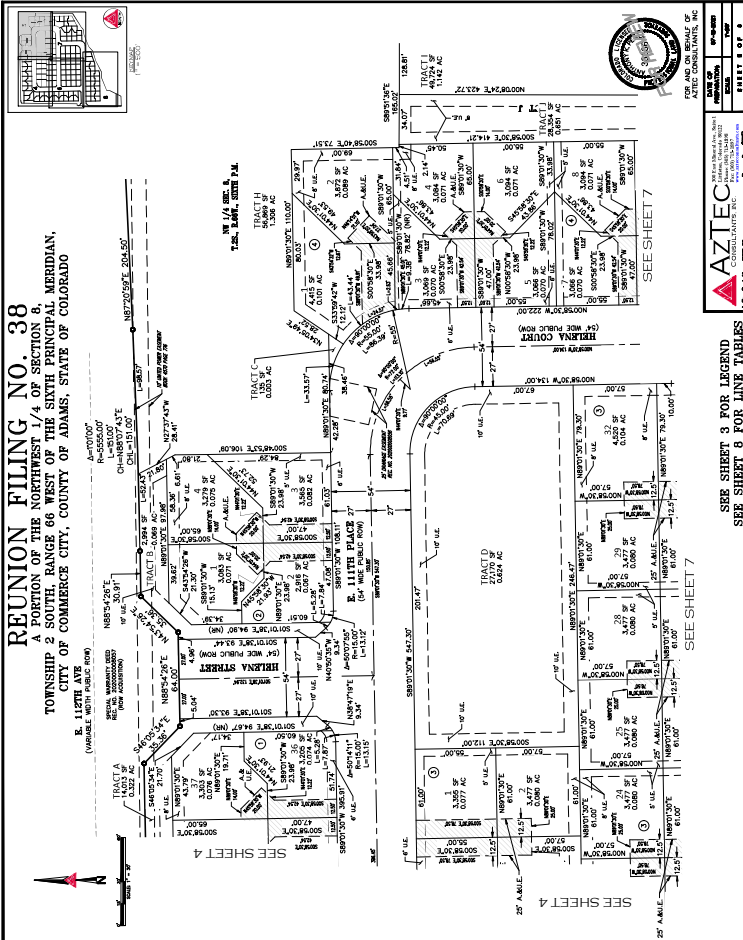
**ADAMS COUNTY CLERK AND RECORDER'S CERTIFICATE**

THE PLAT HEREON FOR RECORD IS IN THE OFFICE OF THE ADAMS COUNTY CLERK AND RECORDER, COUNTY OF ADAMS, STATE OF COLORADO, AND IS A TRUE AND CORRECT COPY OF THE ORIGINAL PLAT ON FILE IN THE OFFICE OF THE COUNTY CLERK AND RECORDER, ADAMS COUNTY, COLORADO.

DATE OF RECORDATION: \_\_\_\_\_  
 COUNTY OF ADAMS, COLORADO

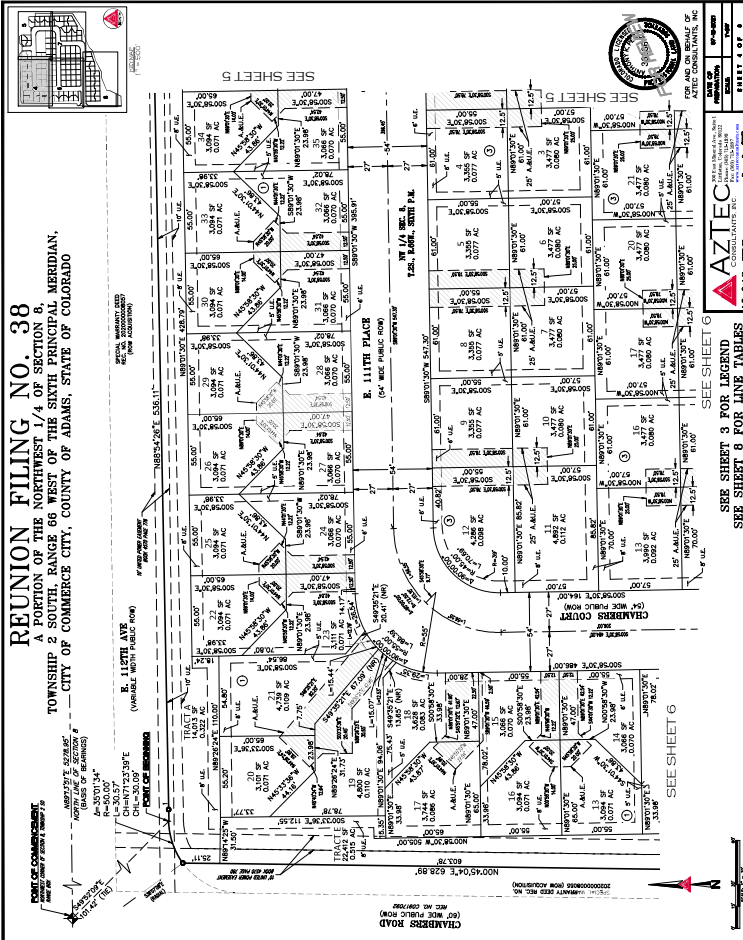






**REUNION FILING NO. 38**  
 A PORTION OF THE NORTHWEST 1/4 OF SECTION 8,  
 TOWNSHIP 2 SOUTH, RANGE 66 WEST OF THE SIXTH PRINCIPAL MERIDIAN,  
 CITY OF COMMERCE CITY, COUNTY OF ADAMS, STATE OF COLORADO

**SEE SHEET 4**  
**SEE SHEET 7**



**REUNION FILING NO. 38**  
 A PORTION OF THE NORTHWEST 1/4 OF SECTION 8,  
 TOWNSHIP 2 SOUTH, RANGE 66 WEST OF THE SIXTH PRINCIPAL MERIDIAN,  
 CITY OF COMMERCE CITY, COUNTY OF ADAMS, STATE OF COLORADO

**SEE SHEET 4**  
**SEE SHEET 7**

FOR AND ON BEHALF OF  
 AZTEC  
 CONSULTANTS, P.C.  
 1500 17TH AVENUE, SUITE 100  
 DENVER, CO 80202  
 PHONE: 303.733.1100  
 FAX: 303.733.1101  
 WWW.AZTECCONCONSULTANTS.COM

SEE SHEET 3 FOR LEGEND  
 SEE SHEET 8 FOR LINE TABLES

FOR AND ON BEHALF OF  
 AZTEC  
 CONSULTANTS, P.C.  
 1500 17TH AVENUE, SUITE 100  
 DENVER, CO 80202  
 PHONE: 303.733.1100  
 FAX: 303.733.1101  
 WWW.AZTECCONCONSULTANTS.COM

SEE SHEET 3 FOR LEGEND  
 SEE SHEET 8 FOR LINE TABLES