

PLAN SET INDEX

SHEET	NAME
L1	LANDSCAPE COVER SHEET & PLANT LIST
L2	LANDSCAPE PLAN
L3	LANDSCAPE PLAN
L4	LANDSCAPE PLAN

LANDSCAPE PLANT LIST

DECIDUOUS SHADE TREES								
SYMBOL	COMMON NAME	BOTANICAL NAME	MATURE HEIGHT	MATURE SPREAD	WATER USE	SUN/SHADE	SIZE AND CONDITION	QTY
OHB	Ohio Buckeye	Aesculus glabra	30'-40'	25'-35'	Medium	Sun / Part Sun	2" Cal., B&B	3
WEC	Western Catalpa	Catalpa speciosa	40'-60'	30'-50'	Low	Sun	2" Cal., B&B	2
WEH	Western Hackberry	Celtis occidentalis	50'-60'	40'-50'	Low	Sun	2" Cal., B&B	8
SHL	Shademaster Honeylocust	Gleditsia triacanthos inermis 'Shademaster'	40'-50'	30'-40'	Low	Sun	2" Cal., B&B	5

ORNAMENTAL TREES								
SYMBOL	COMMON NAME	BOTANICAL NAME	MATURE HEIGHT	MATURE SPREAD	WATER USE	SUN/SHADE	SIZE AND CONDITION	QTY
BTM	Bigtooth Maple	Acer grandidentatum	20'-30'	20'-30'	Low	Sun	1-1/2" Cal., B&B	6
TAT	Hot Wings Tatarian Maple	Acer tataricum 'GerAnn'	20'-25'	15'-20'	Low	Adaptable	1-1/2" Cal., B&B	6
PRC	Prairie Rose Crabapple	Malus 'Prairie Rose'	15'-20'	15'-20'	Medium	Sun	1-1/2" Cal., B&B	3
CCP	Chanticleer Pear	Pyrus calleryana 'Chanticleer'	20'-30'	15'-20'	Medium	Sun	1-1/2" Cal., B&B	1
JTL	Japanese Tree Lilac	Syringa reticulata	15'-25'	15'-20'	Low	Sun / Part Shade	1-1/2" Cal., B&B	3

EVERGREEN TREES								
SYMBOL	COMMON NAME	BOTANICAL NAME	MATURE HEIGHT	MATURE SPREAD	WATER USE	SUN/SHADE	SIZE AND CONDITION	QTY
BSP	Bosnian Pine	Pinus heldreichii (leucodermis)	15'-25'	10'-12'	Low	Sun	6" ht., B&B	4
AUS	Austrian Pine	Pinus nigra	40'-60'	30'-40'	Low	Sun	6" ht., B&B	11
RMJ	Rocky Mountain Juniper	Juniperus scopulorum	20'-30'	8'-12'	Very Low	Sun	5 Gallon Cont.	9
OSJ	One Seed Juniper	Juniperus monosperma	10'-30'	6'-12'	Very Low	Sun	5 Gallon Cont.	6

DECIDUOUS SHRUBS								
SYMBOL	COMMON NAME	BOTANICAL NAME	MATURE HEIGHT	MATURE SPREAD	WATER USE	SUN/SHADE	SIZE AND CONDITION	QTY
DAM	Dwarf Amur Maple	Acer ginnala 'Compactum'	6'-8'	6'-8'	Low	Sun	5 Gallon Cont.	5
UTS	Utah Serviceberry	Amelanchier utahensis	6'-12'	6'-12'	Low	Sun	5 Gallon Cont.	13
SIP	Siberian Peashrub	Caragana arborescens	10'-15'	8'-12'	Low	Sun	5 Gallon Cont.	16
FEB	Fentibush	Chamaebatia millefolium	3'-5'	3'-6'	Very Low	Sun	5 Gallon Cont.	19
TBR	Tall Blue Rabbitbrush	Ericameria nauseosa speciosa	2'-6"	2'-6"	Very Low	Sun	5 Gallon Cont.	12
RUS	Russian Sage	Perovskia atriplicifolia	3'-4'	3'-4'	Very Low	Sun	5 Gallon Cont.	23
JAP	Jackman Potentilla	Potentilla fruticosa 'Jackmannii'	2'-3'	3'-4'	Low	Sun	5 Gallon Cont.	16
TLS	Three-Leaf Sumac	Rhus trilobata	3'-6"	3'-6"	Very Low	Sun	5 Gallon Cont.	17
RLR	Red-Leaved Rose	Rosa glauca	6'-7"	4'-6"	Low	Sun	5 Gallon Cont.	11
CAC	Compact American Cranberrybush	Viburnum trilobum 'Bailey Compactum'	4'-5'	4'-5'	Medium	Adaptable	5 Gallon Cont.	17

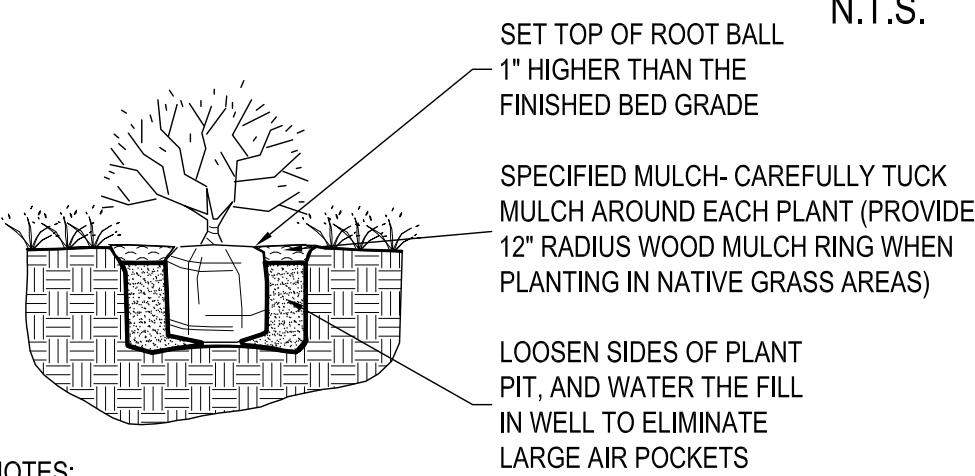
EVERGREEN SHRUBS								
SYMBOL	COMMON NAME	BOTANICAL NAME	MATURE HEIGHT	MATURE SPREAD	WATER USE	SUN/SHADE	SIZE AND CONDITION	QTY
ARJ	Armstrong Juniper	Juniperus chinensis 'Armstrongii'	3'-4'	3'-4'	Low	Sun	5 Gallon Cont.	9
CCJ	Calgary Carpet Juniper	Juniperus sabina Calgary Carpet	12'-18"	6'-8"	Low	Sun / Part Shade	5 Gallon Cont.	34
BTM	Big Tuna Mugo Pine	Pinus mugo 'Big Tuna'	6'-8"	5'-6"	Low	Sun	5 Gallon Cont.	3

ORNAMENTAL GRASSES								
SYMBOL	COMMON NAME	BOTANICAL NAME	MATURE HEIGHT	MATURE SPREAD	WATER USE	SUN/SHADE	SIZE AND CONDITION	QTY
DBS	Dallas Blues Blue Switch Grass	Panicum virgatum 'Dallas Blues'	4'-6"	18'-24"	Low	Sun	5 Gallon Cont.	38
SRS	Shenandoah Red Switch Grass	Panicum virgatum 'Shenandoah'	3'-4'	12'-18"	Low	Sun	5 Gallon Cont.	34
GSG	Giant Sacaton Grass	Sporobolus wrightii	3'-6"	3'-5"	Low	Sun	5 Gallon Cont.	12

SOD  
90 / 10 Fescue/Bluegrass Mix

NATIVE SEEDING - LOW GROW NATIVE MIX  
Pawnee Buttes Seed Mixes (www.pawneebuttesseed.com);  
PBSI Low Grow Native Mix  
Application Rate: 5 LBS/1,000 SF

PLANTING DETAIL FOR SHRUBS, AND ALL CONTAINER PLANTS LARGER THAN 1 GALLON



- NOTES:
1. PRUNE ALL DEAD OR DAMAGED BRANCHES PRIOR TO, AND AFTER PLANTING.
  2. CRUMBING OR BROKEN ROOT BALLS WILL BE REJECTED.
  3. DIG PLANT PIT TWICE AS WIDE AND HIGH AS CONTAINER.
  4. TAKE CARE NOT TO DAMAGE ROOT BALL WHEN REMOVING THE PLANT FROM ITS CONTAINER.
  5. FOR ALL PLANTS IDENTIFIED WITH WATER USE OF "LOW" OR "VERY LOW" ON THE PLANT LIST, KEEP WOOD MULCH 2" BACK FROM TRUNK OR STEM.
  6. FILL PLANT PIT WITH 1/2 SPECIFIED SOIL MIX AND 1/2 PIT SOIL.
  7. SCORE ROOT BOUND ROOT BALLS TO FREE UP ROOTS.

# TRAVEL CENTERS OF AMERICA

## Conditional Use Permit - Landscape Plans Commerce City, Colorado

VICINITY MAP





Issue Dates	
Date:	Notes:
11-04-15	Client Review
11-30-15	City Submittal
01-27-16	Client Review
01-28-16	City Submittal
02-24-16	City Submittal
04-08-16	City Submittal

PREPARED UNDER THE  
SUPERVISION OF

PLANNING SUBMITTAL  
NOT FOR CONSTRUCTION

MATTHEW G. CORRIGAN  
COLORADO P.L.A. #155

This document and the designs and ideas herein are the property of Outdoor Design Group, Inc. for use as an instrument of the professional services provided to the Agreement for this specific project between the Client and Outdoor Design Group. This document and the designs and ideas herein shall not be used, disseminated, or modified for any other project or for any other commercial use without the written consent of Outdoor Design Group, Inc.

Sheet

L2

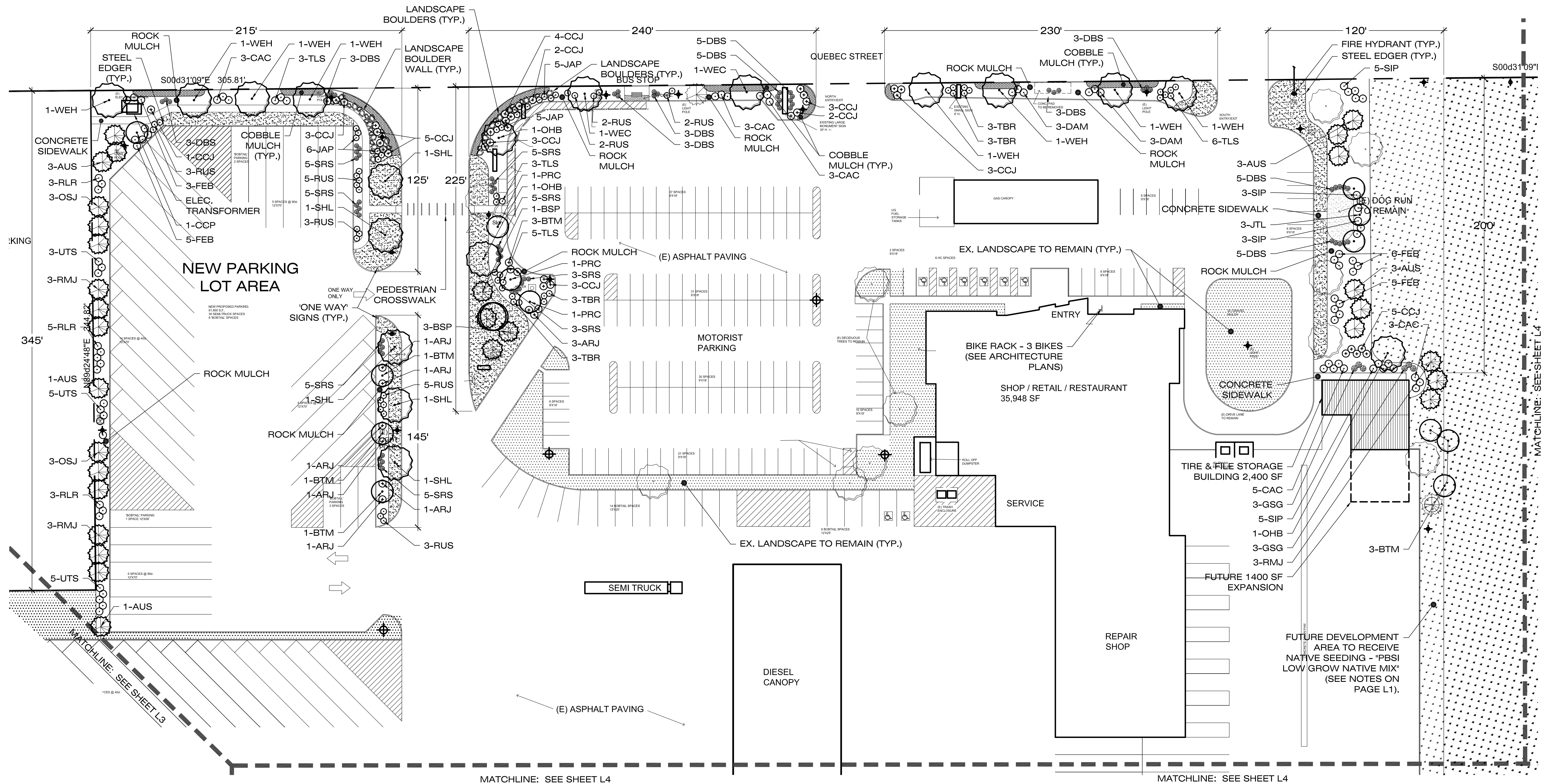
Landscape  
Plan

## LANDSCAPE PLAN

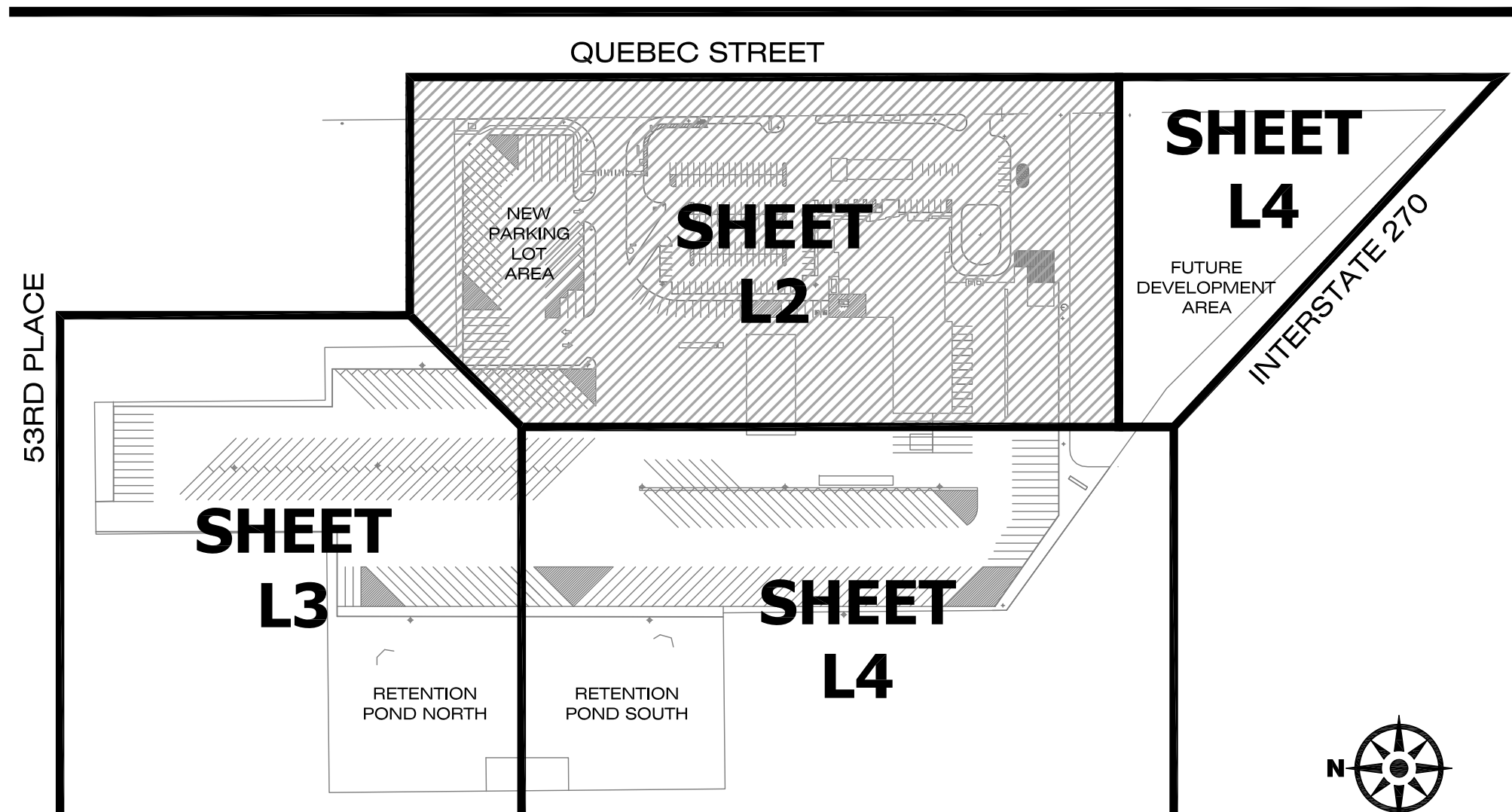
### LANDSCAPE LEGEND

(SEE SHEET L1 FOR FULL PLANT LIST)

- DECIDUOUS SHADE TREES
- ORNAMENTAL TREES
- EVERGREEN TREES
- EXISTING TREES TO REMAIN
- EXISTING TREES TO REMOVE
- DECIDUOUS SHRUBS
- EVERGREEN SHRUBS
- ORNAMENTAL GRASSES
- SOD
- NATIVE SEED "PBSI LOW GROW NATIVE MIX"
- EXISTING LANDSCAPE TO REMAIN



### SHEET KEY



N.T.S.

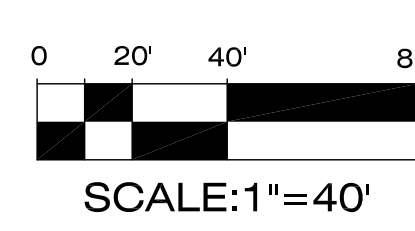
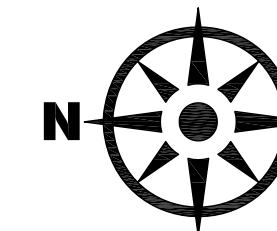
### NEW PARKING LOT AREA LANDSCAPE REQUIREMENTS

ITEM	REQUIREMENT	AREA PROVIDED	PLANT MATERIAL REQUIRED/PROVIDED
SEC. 21-7516 BUFFER REQUIREMENTS	BUFFER ZONE B: 15' WIDE LANDSCAPE BUFFER; 5 TREES & 8 SHRUBS/100 L.F.	= 345 L.F. = 4,251 S.F.	REQUIRED: 345 LF = 17 TREES & 28 SHRUBS PROVIDED: 10' WIDE BUFFER, 17 TREES & 28 SHRUBS
SEC. 21-7550 RIGHT-OF-WAY LANDSCAPING	TREES 40' ON CENTER, IN OR NEAR RIGHTS-OF-WAY (QUEBEC ST.)	= 215 L.F. = 3,725 S.F.	REQUIRED: 215 L.F. = 4 TREES PROVIDED: 4 TREES
SEC. 21-7540 PERIMETER LANDSCAPING	10' WIDE LANDSCAPE BUFFER; 1 TREE & 5 SHRUBS/30 L.F.	= 485 L.F. = 6,537 S.F.	REQUIRED: 485 L.F. = 16 TREES & 80 SHRUBS PROVIDED: 17', 25', & 33' WIDE BUFFERS, 13 TREES & 80 SHRUBS

### PERIMETER LANDSCAPE AREA REQUIREMENTS

ITEM	REQUIREMENT	AREA PROVIDED	PLANT MATERIAL REQUIRED/PROVIDED
SEC. 21-7550 RIGHT-OF-WAY LANDSCAPING	TREES 40' ON CENTER, IN OR NEAR RIGHTS-OF-WAY (QUEBEC ST.)	= 590 L.F. = 7,753 S.F.	REQUIRED: 590 L.F. = 9 TREES PROVIDED: 9 TREES (7 NEW, 2 EXISTING)
SEC. 21-7540 PERIMETER LANDSCAPING	15' WIDE LANDSCAPE BUFFER; 1 TREE & 5 SHRUBS/30 L.F.	= 1,110 L.F. = 27,146 S.F.	REQUIRED: 1,110 L.F. = 37 TREES & 185 SHRUBS PROVIDED: 10'-60' WIDE BUFFERS, 45 TREES (41 NEW, 8 EXISTING) & 181 SHRUBS

NOTES:  
1) EACH 3' & 4' SIZE ORNAMENTAL GRASS IS EQUAL TO (1) X 5 GALLON SHRUB.



### CITY COUNCIL CERTIFICATE:

APPROVED BY THE CITY COUNCIL OF COMMERCE CITY,  
THIS \_\_\_ DAY OF \_\_\_, A.D. \_\_\_\_.

CITY SIGNATURE

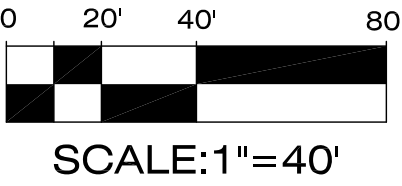
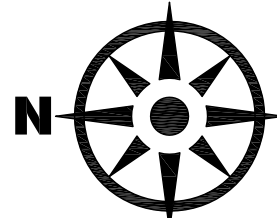
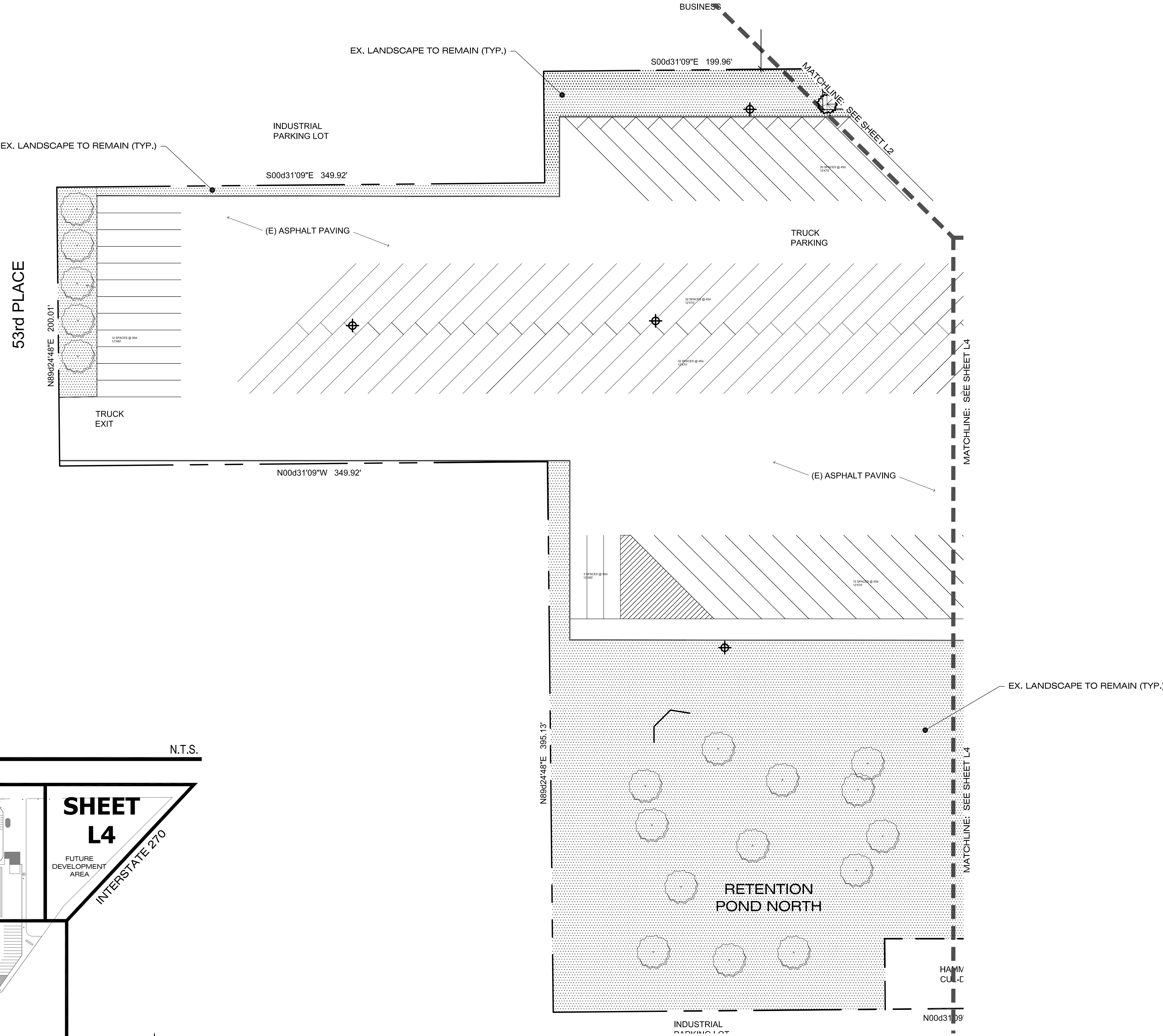
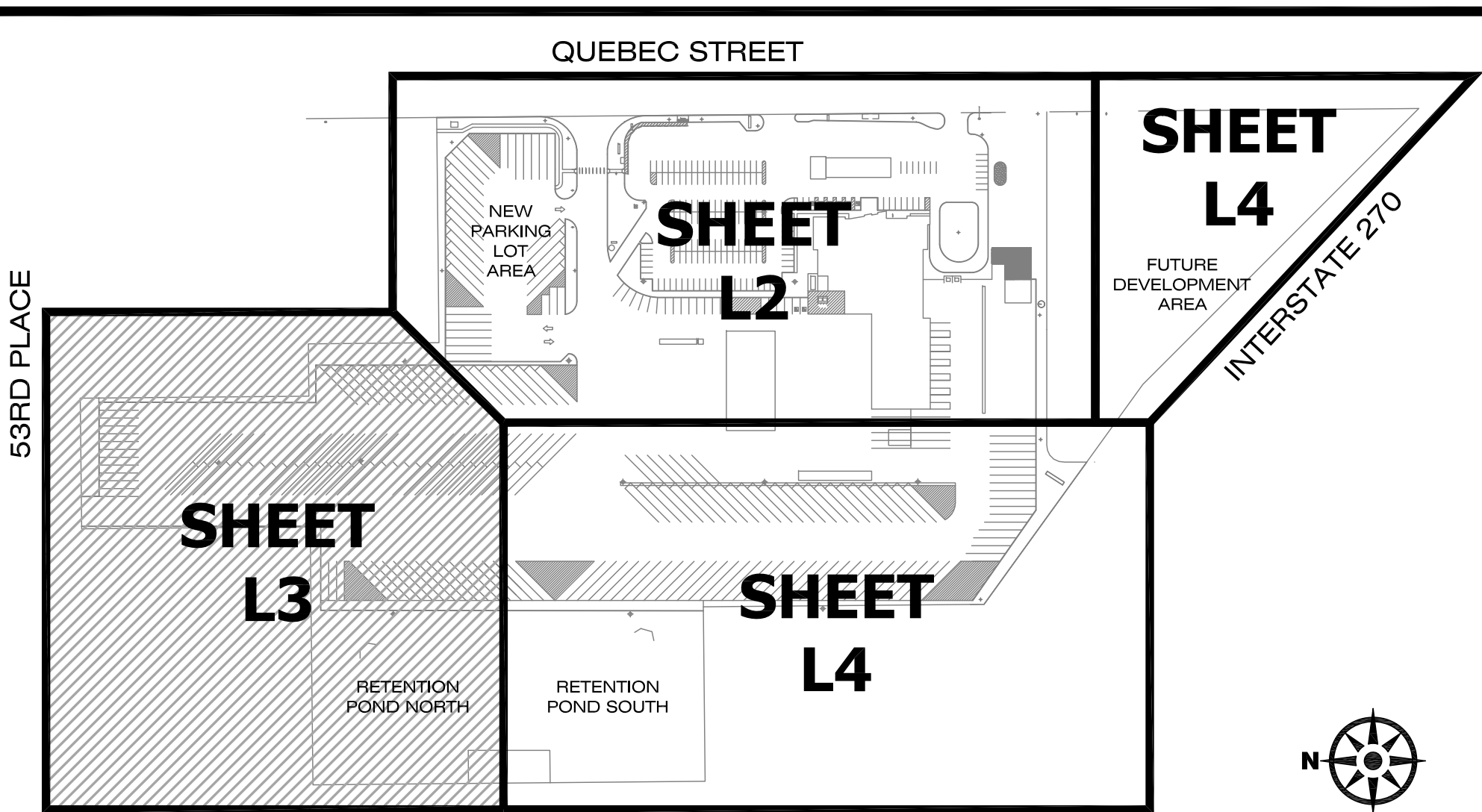


LANDSCAPE PLAN

LANDSCAPE LEGEND (SEE SHEET L1 FOR FULL PLANT LIST)

- DECIDUOUS SHADE TREES
- ORNAMENTAL TREES
- EVERGREEN TREES
- EXISTING TREES TO REMAIN
- EXISTING TREES TO REMOVE
- DECIDUOUS SHRUBS
- EVERGREEN SHRUBS
- ORNAMENTAL GRASSES
- SOD
- NATIVE SEED  
"PBSI LOW GROW NATIVE MIX"
- EXISTING LANDSCAPE TO REMAIN

SHEET KEY



CITY COUNCIL CERTIFICATE:

APPROVED BY THE CITY COUNCIL OF COMMERCE CITY,  
THIS \_\_\_ DAY OF \_\_\_, A.D. \_\_\_\_.

CITY SIGNATURE

**TRAVEL CENTERS OF AMERICA**  
5101 Quebec St., Commerce City, Colorado 80022  
PIN: 0182317107020

Owner:  
Travel Centers of America  
24601 Center Ridge Rd.  
Westlake, OH 44145

Conditional Use Permit  
Landscape Plans

Issue Dates

Date:	Notes:
11-04-15	Client Review
11-30-15	City Submittal
01-27-16	Client Review
01-28-16	City Submittal
02-24-16	City Submittal
04-08-16	City Submittal

PREPARED UNDER THE  
SUPERVISION OF

**PLANNING SUBMITTAL**  
**NOT FOR CONSTRUCTION**

MATTHEW G. CORRIGAN  
COLORADO P.L.A. #155

This document and the designs and ideas herein are the property of Outdoor Design Group, Inc. for use as an instrument of the professional services pursuant to the Agreement for this specific project between the Client and Outdoor Design Group, Inc. This document and the designs and ideas herein shall not be used, disseminated, or modified for any other project or for any other commercial use without the written consent of Outdoor Design Group, Inc.

Sheet

**L3**

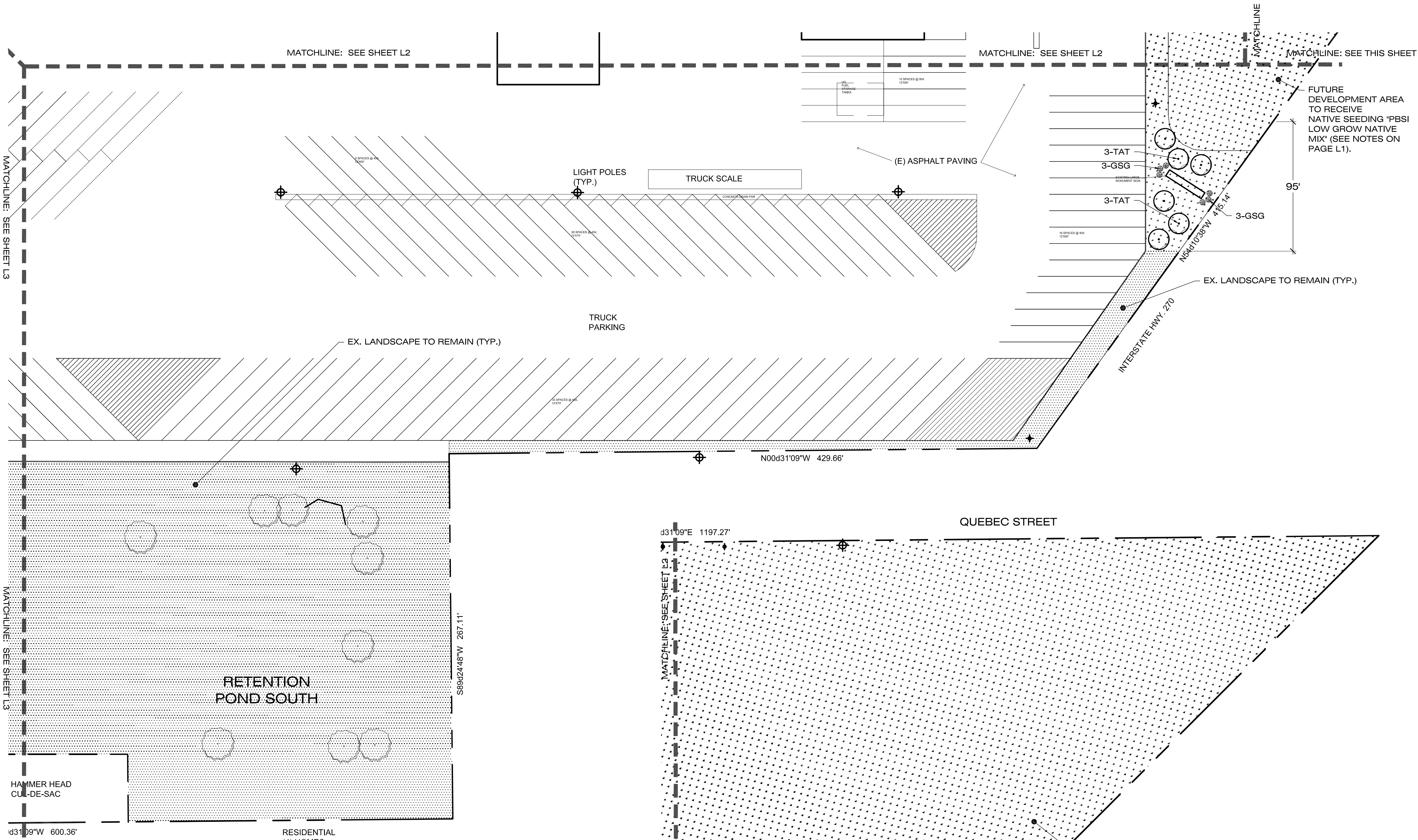
Landscape  
Plan



LANDSCAPE PLAN

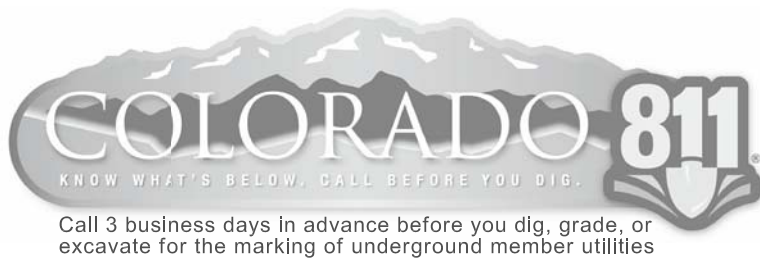
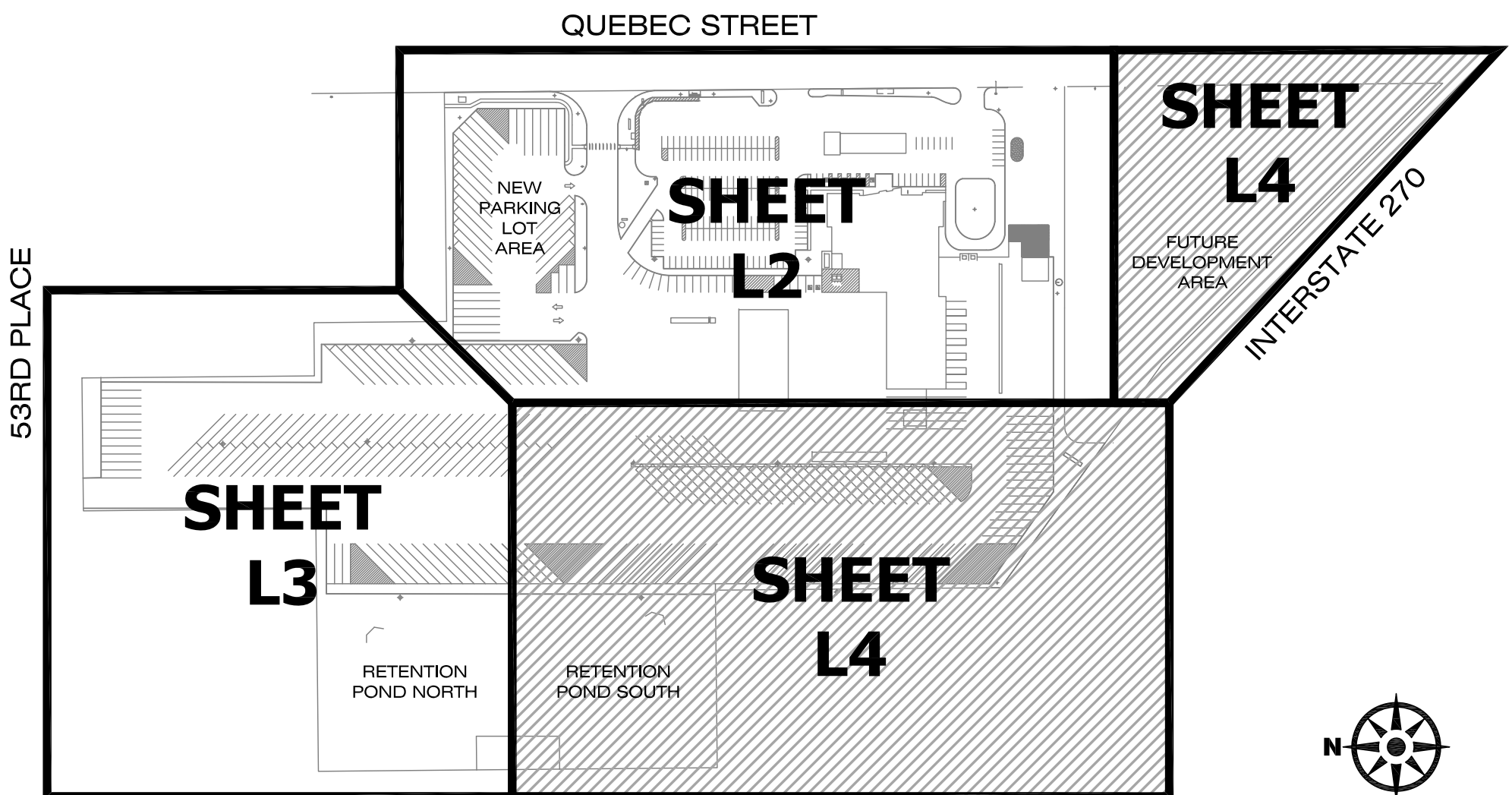
LANDSCAPE LEGEND (SEE SHEET L1 FOR FULL PLANT LIST)

- DECIDUOUS SHADE TREES
- ORNAMENTAL TREES
- EVERGREEN TREES
- EXISTING TREES TO REMAIN
- EXISTING TREES TO REMOVE
- DECIDUOUS SHRUBS
- EVERGREEN SHRUBS
- ORNAMENTAL GRASSES
- SOD
- NATIVE SEED "PBSI LOW GROW NATIVE MIX"
- EXISTING LANDSCAPE TO REMAIN



SHEET KEY

N.T.S.



TRAVEL CENTERS OF AMERICA  
5101 Quebec St., Commerce City, Colorado 80022  
PIN: 0182317107020

Owner:  
Travel Centers of America  
24601 Center Ridge Rd.  
Westlake, OH 44145

Conditional Use Permit  
Landscape Plans

Issue Dates

Date:	Notes:
11-04-15	Client Review
11-30-15	City Submittal
01-27-16	Client Review
01-28-16	City Submittal
02-24-16	City Submittal
04-08-16	City Submittal

PREPARED UNDER THE  
SUPERVISION OF

PLANNING SUBMITTAL  
NOT FOR CONSTRUCTION

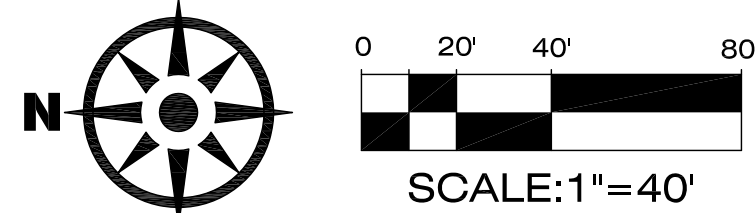
MATTHEW G. CORRIGAN  
COLORADO P.L.A. #155

This document and the designs and plans herein are the property of Outdoor Design Group, Inc. for use as an instrument of the professional services pursuant to the Agreement for this specific project between the Client and Outdoor Design Group, Inc. This document and the designs and plans herein shall not be used, disseminated, or modified for any other project or for any other commercial use without the written consent of Outdoor Design Group, Inc.

CITY COUNCIL CERTIFICATE:

APPROVED BY THE CITY COUNCIL OF COMMERCE CITY,  
THIS \_\_\_ DAY OF \_\_\_, A.D. \_\_\_

CITY SIGNATURE



Sheet

L4

Landscape  
Plan