



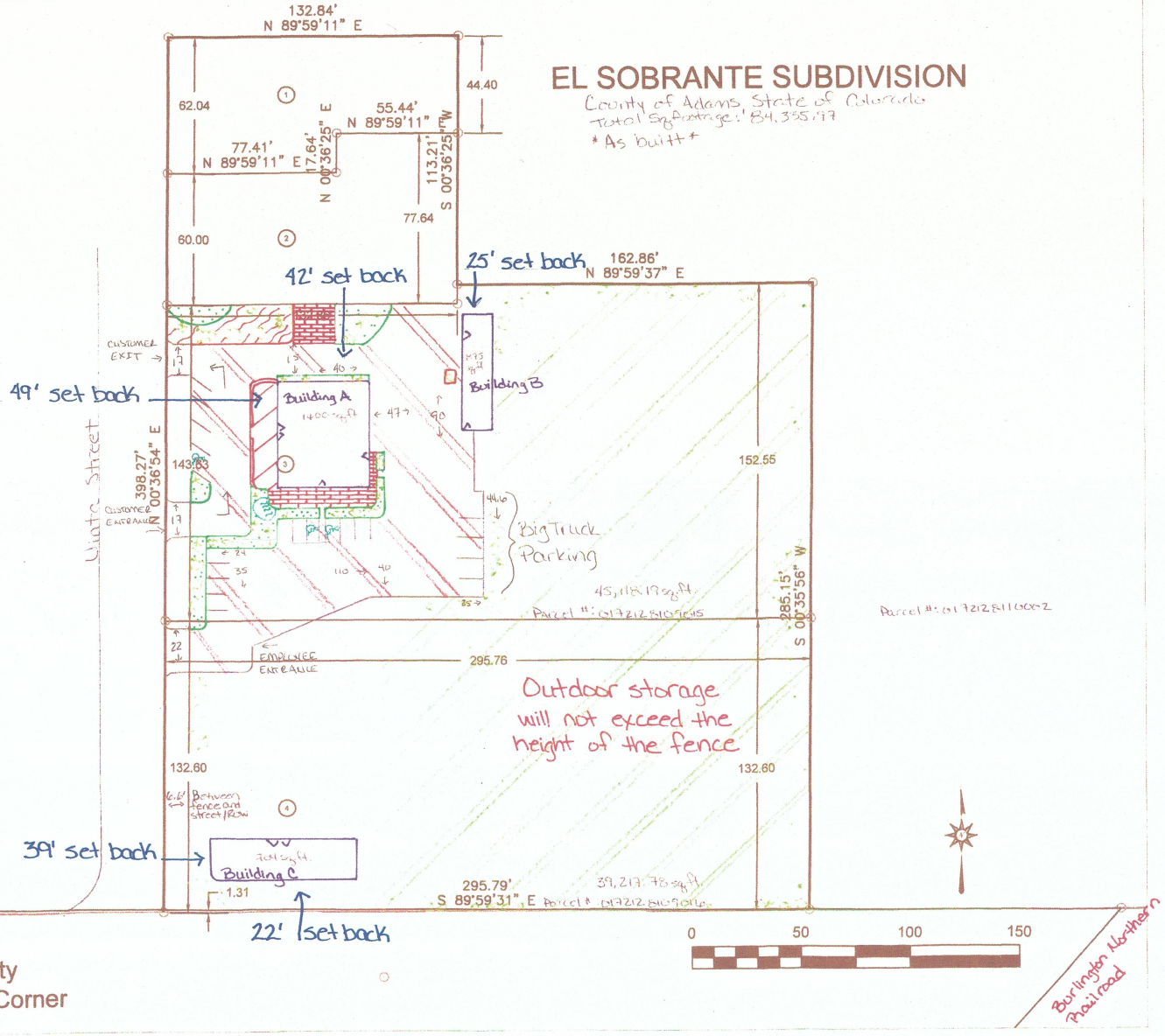
Site Plan Details

8442 Uinta Street

-  Concrete
-  Recycle Asphalt
- Landscape & Hardscape 4,890.2 sq.ft.
 - Hardscape 1,950 sq.ft.
 - Sod 2,490.2 sq.ft.
 - Decorative Rock 450 sq.ft.
- Parking Lot/ Driveways 14,021 sq.ft.
 - Parking 3,400 sq.ft.
 - Dimensions of Parking Stalls: 20' x 10'

EL SOBRANTE SUBDIVISION

County of Adams State of Colorado
 Total Eq. Acreage: 84.33577
 * As built *



PK nails of possible location of Center 1/4 section

Center 1/4 section according to Plat

Line between Property Corner and West 1/4 Corner