



# WISE DIA Connection City Council

April 1, 2024



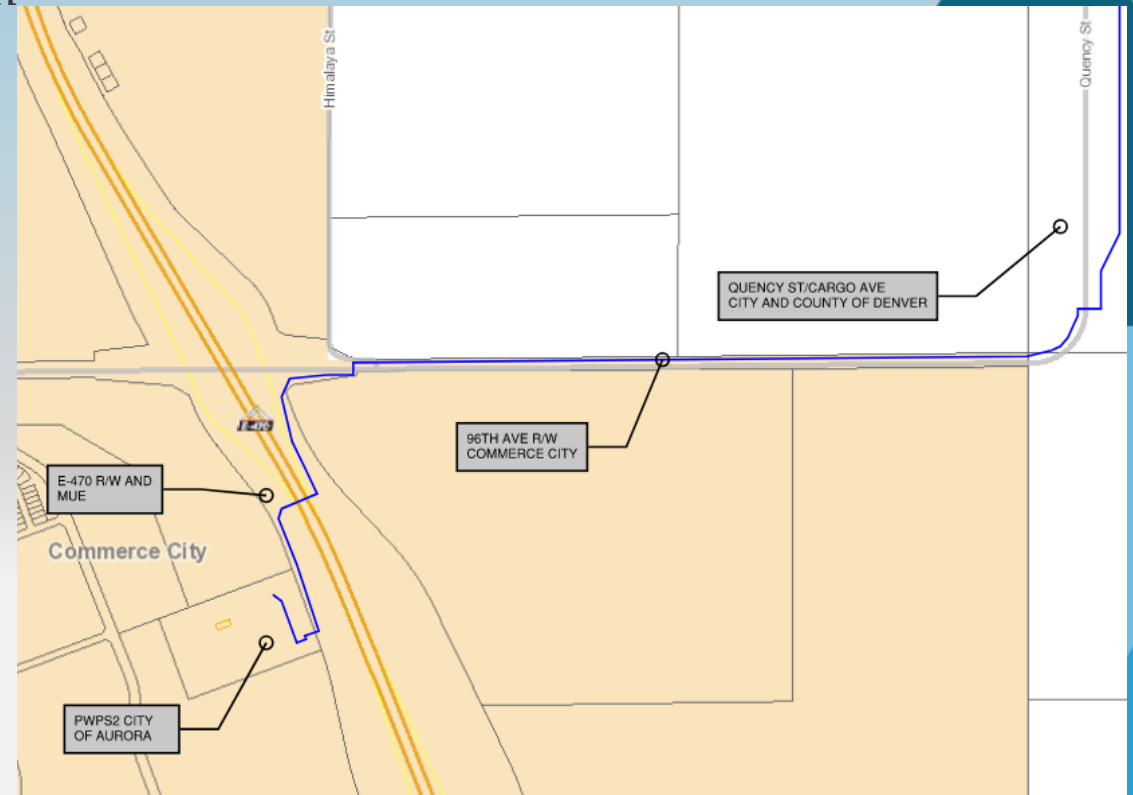
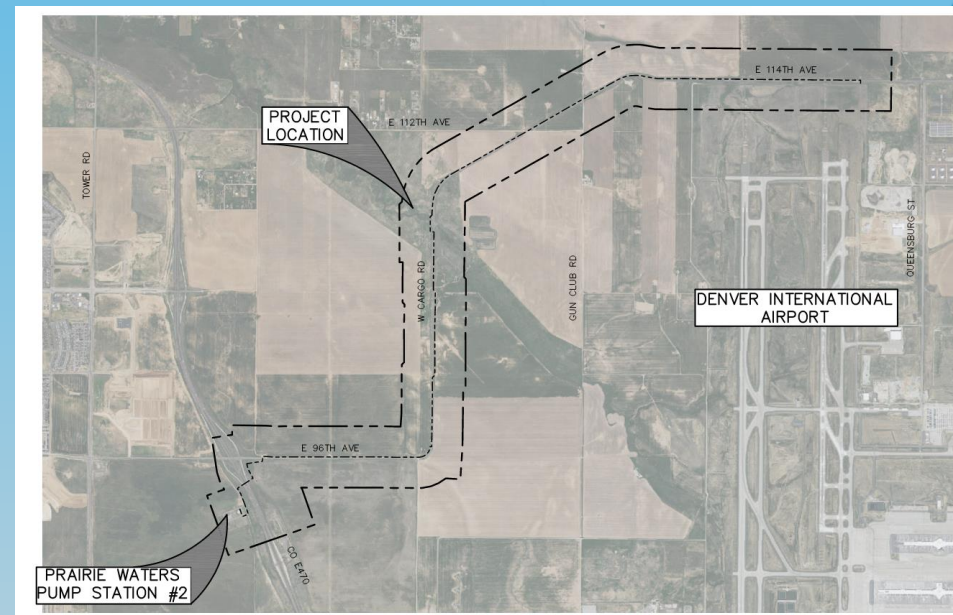
# PROJECT OVERVIEW

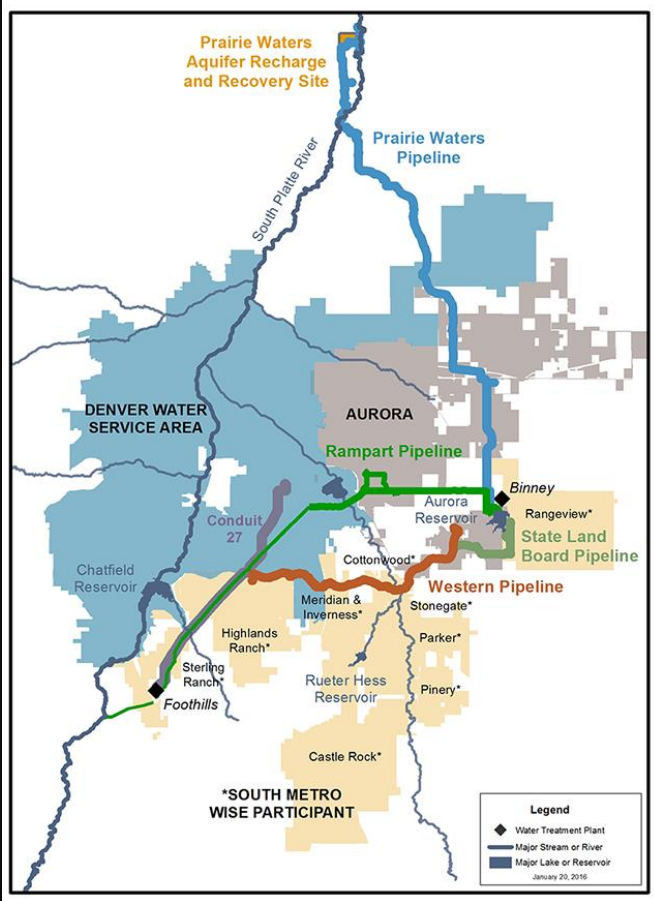
## WISE DIA Connection:

- 6.1 miles in length (total) of 18-inch potable water
- 1.5 miles in Commerce City
- Delivers water from Denver International Airport (DIA) to Aurora Water Prairie Waters Pump Station Number 2
- Includes small Flow Control Building on Aurora Property. All other infrastructure is underground.

## Objective:

- To connect Denver Water's system at DIA to the City of Aurora's Prairie Water's system to expand water re-usability in the Denver Metro Area.



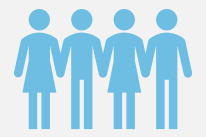


## Water Infrastructure and Supply Efficiency



- WISE - Water Infrastructure and Supply Efficiency is a partnership between Aurora, DW and 10 south Metro water suppliers

## Community Benefit



- WISE uses excess capacity and available return flows from Aurora & Denver Water to create a new water supply that will reduce the south metro's reliance on non-renewable groundwater and expands Denver Water and Aurora Water drought resiliency.

## Resource Conservation



- Utilizes approximately \$800M in existing infrastructure and builds approximately \$120M in new infrastructure

# WISE



# C3 and WISE Shared Sustainability Goals

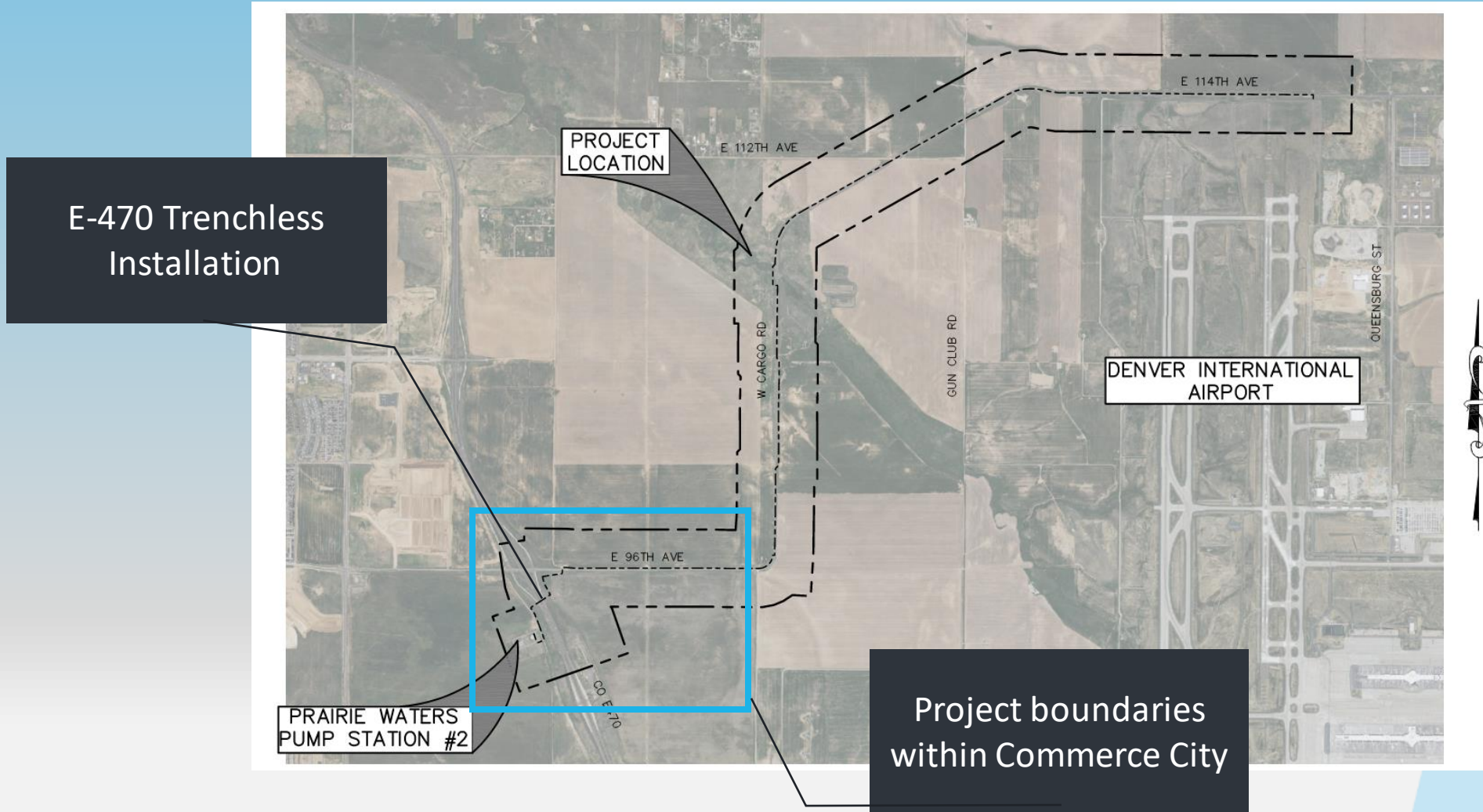
## 1. Proactively Managing Water Resources

- WISE's goal is to share water resources amongst its users to provide drought tolerant supplies to the Denver Metropolitan Area.
- Reduces reliance on non-renewable groundwater in the Denver Metro Area.

## 2. Improved Water Quality

- Conveying water from DIA to Aurora's Prairie Waters Pump Station will improve water quality around the airport and reduce water age.

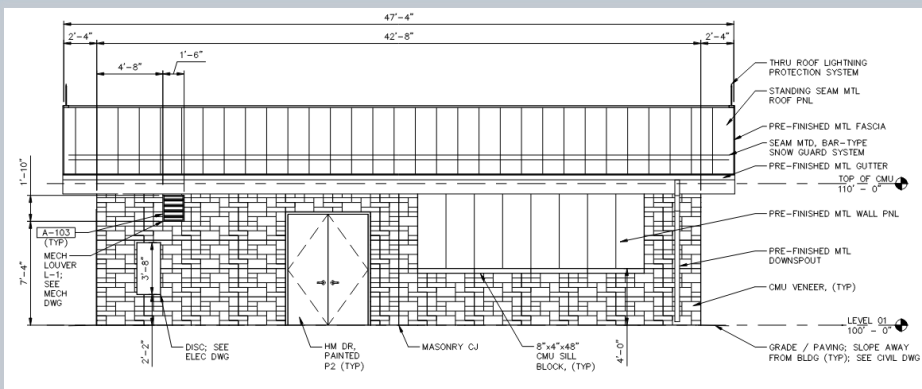
# PIPELINE ALIGNMENT



# FLOW CONTROL BUILDING

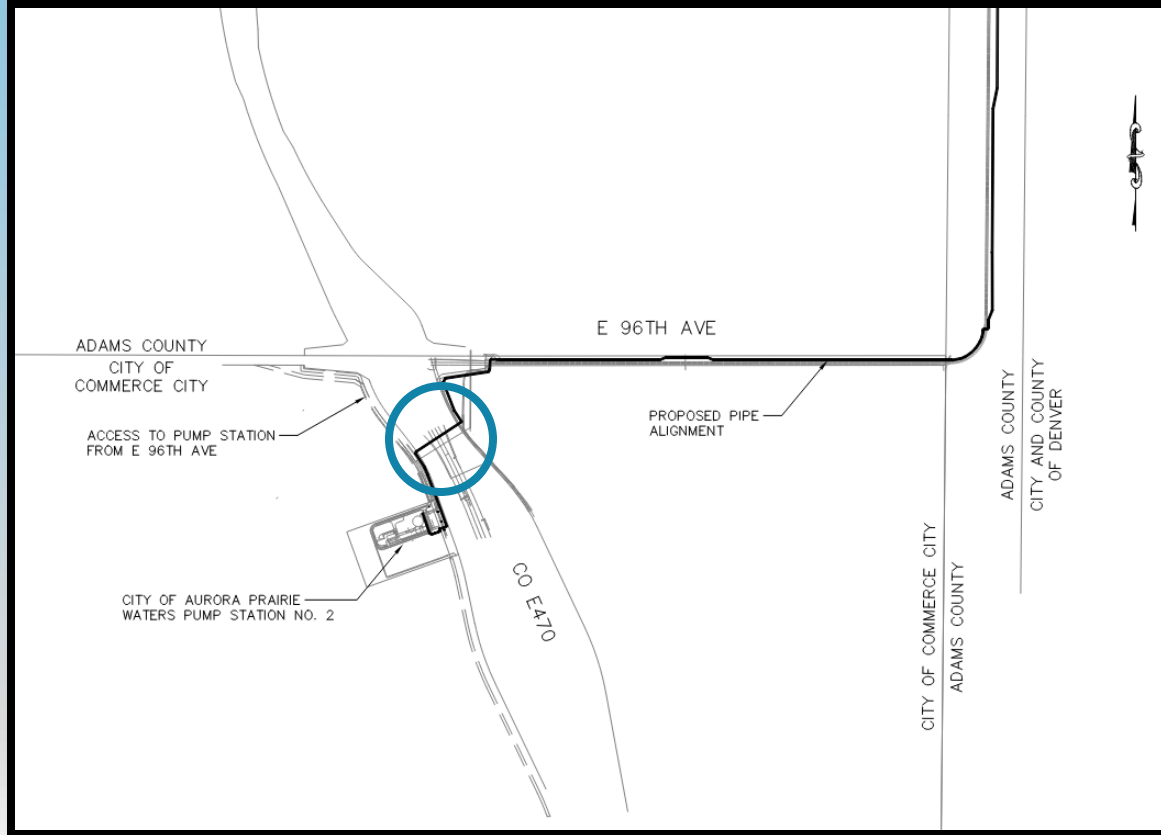
## Dimensions:

- 40' x 18' concrete masonry



Prairie Waters Pump Station No. 2

# HIGHWAY E-470 CROSSING



Horizontal Boring for Denver Water and  
SACWSD pipelines

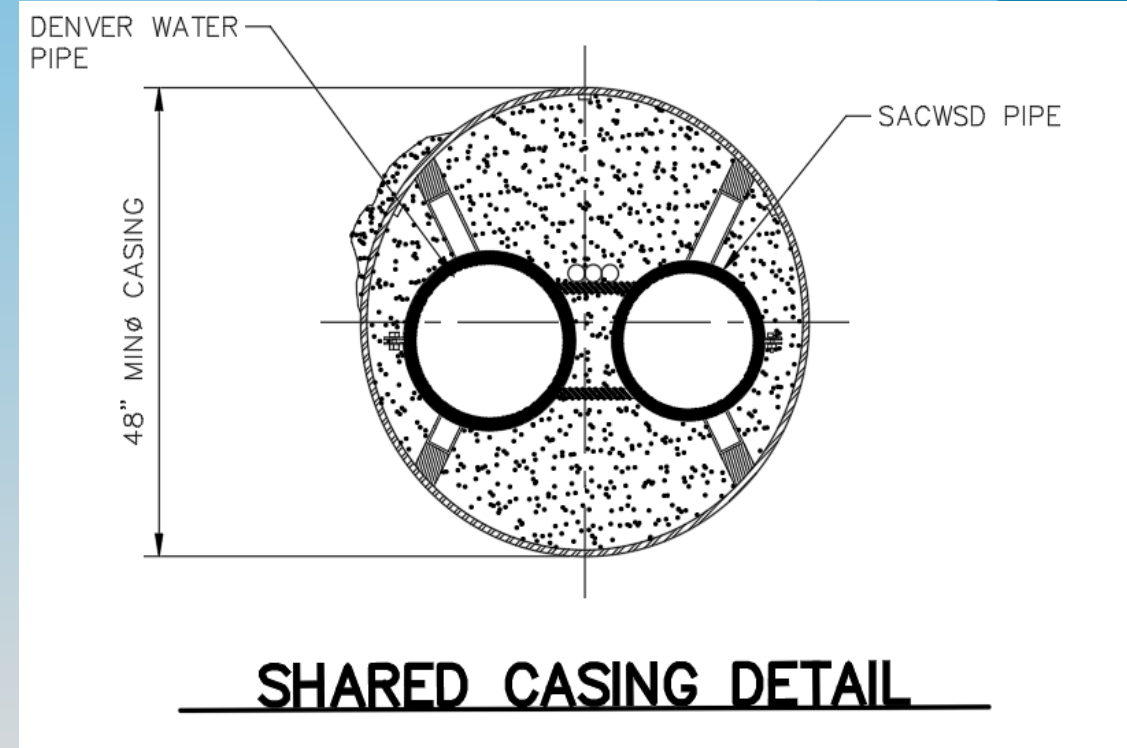


Trenchless Installation of 48" Steel Casing

# SACWSD PARTNERSHIP

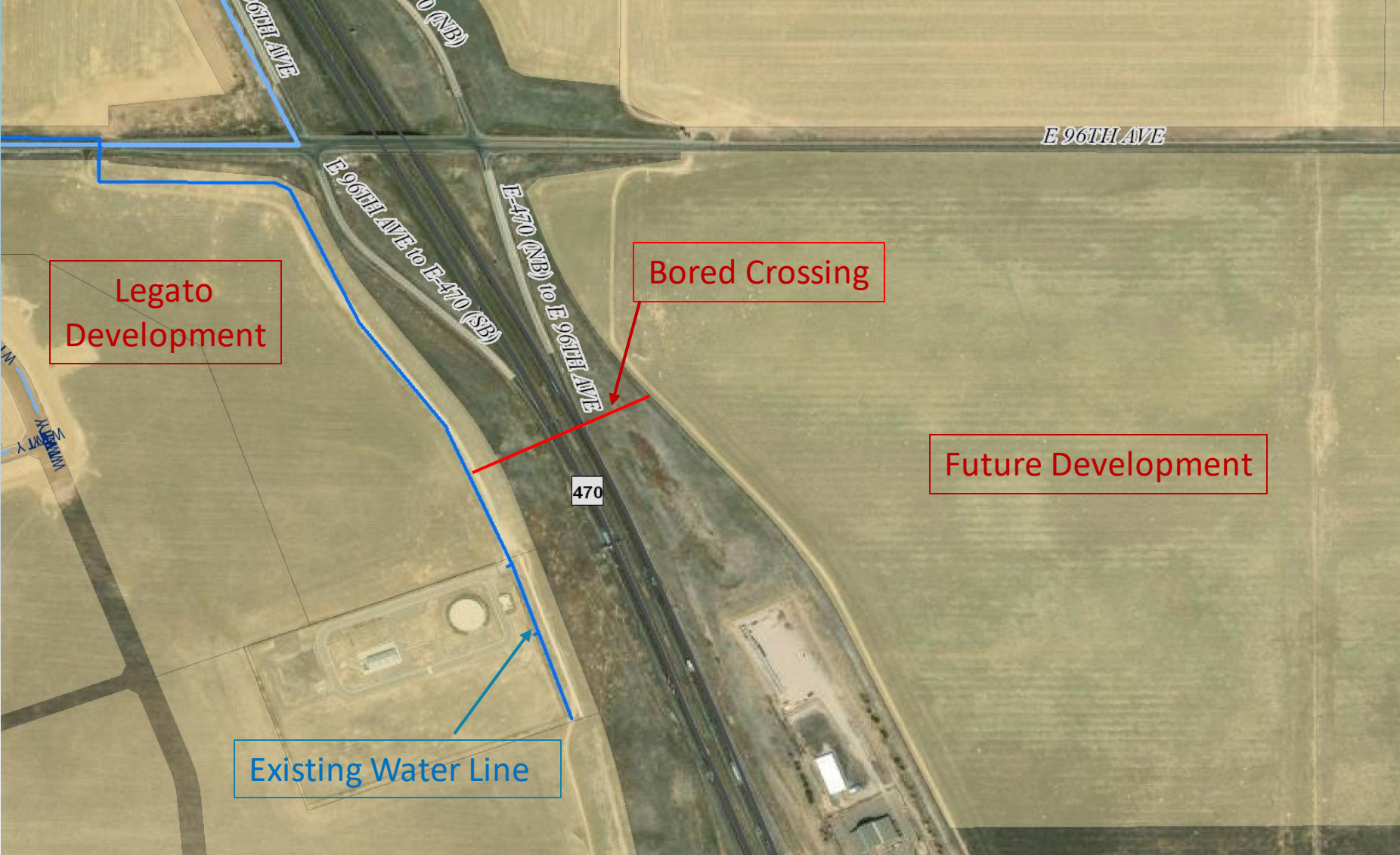
## 16" SACWSD Pipeline

- Shared crossing of E-470 using a \$1.7M boring
- Cost sharing reduces cost for SACWSD and ultimately residents
- Establishes critical infrastructure for growth East of E-470
- Encourages development East of E-470
  - SACWSD has seen increased interest on developing East of E-470
- Infrastructure is a part of SACWSD Master Plan
- Shared boring reduces:
  - Environmental impact by having only one crossing and construction area
  - Uses less ROW which allows for potential future utility needs





# SACWSD CROSSING

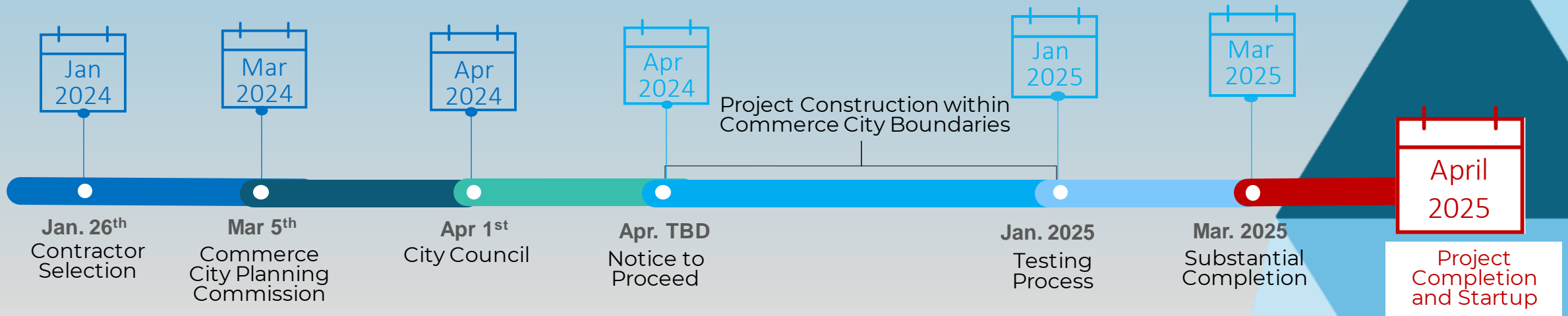


SELECTED CONTRACTOR

**JHL**  
**CONSTRUCTORS**



# PROJECT SCHEDULE



QUESTIONS?