



2022-2023 Redistricting Plan Public Hearing

.....●
●.....
March 6, 2023

Agenda

Review of Final Plan Options

2023 Final Plan Background

Council held a Public Hearing on February 6, 2023

Majority of Council expressed favorable views of Plans 2 & 3

Consider metropolitan districts as communities of interest

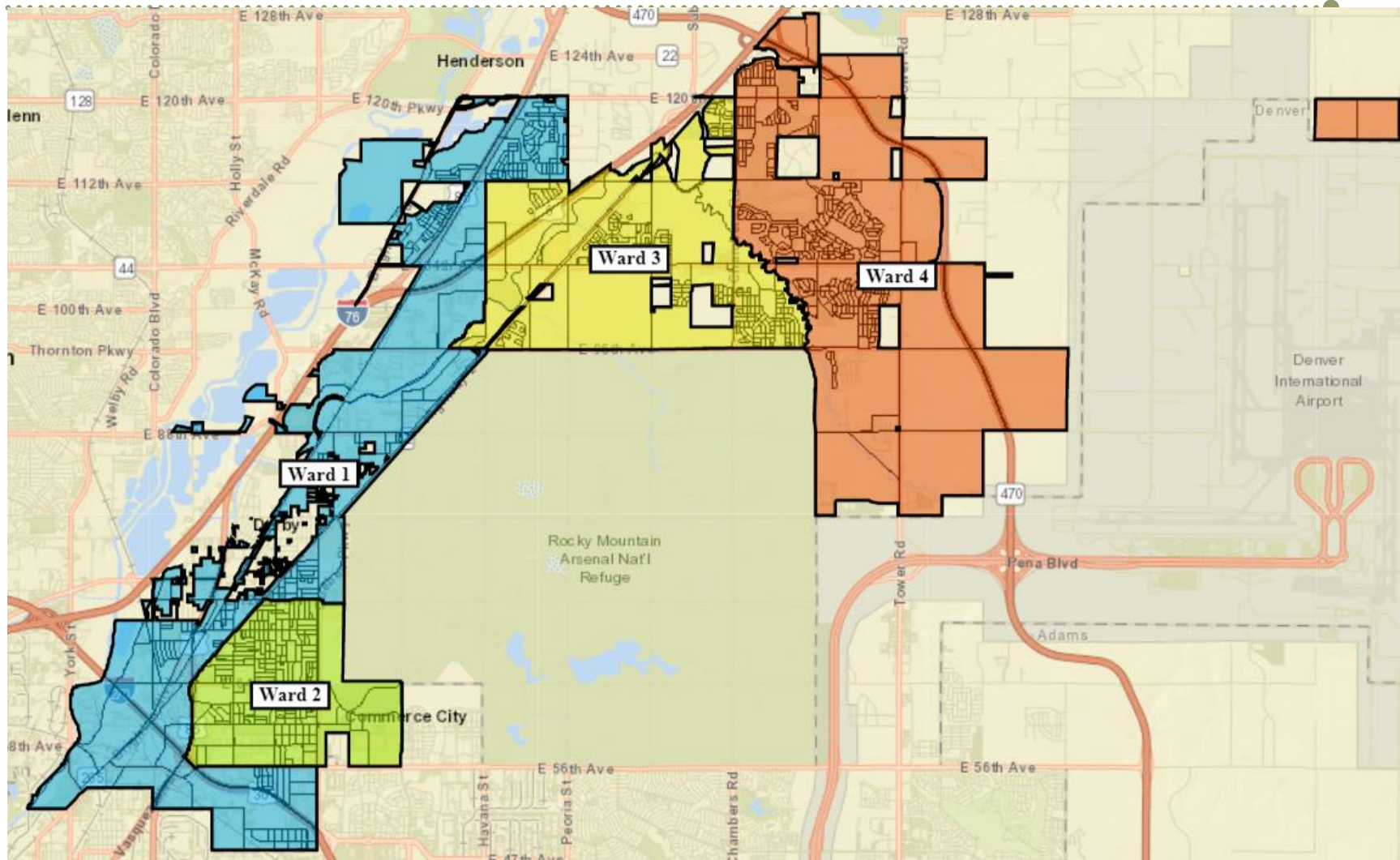
No written comments received

2023 Final Plan Background

Option A – combines Plans 2 & 3 by shifting Wards III & IV boundary to be along Second Creek but splits metropolitan districts

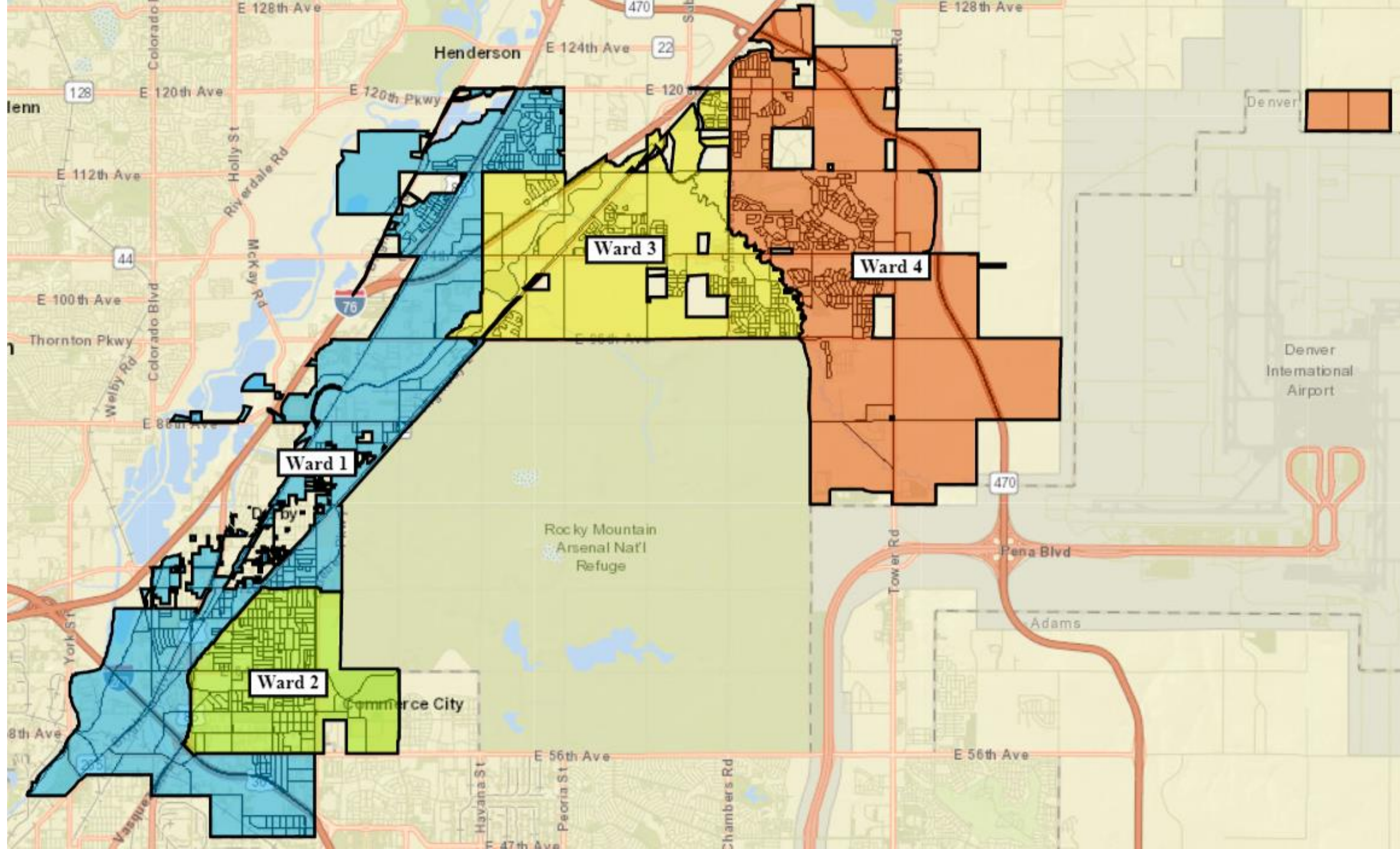
Option B – keeps metropolitan districts together, but creates a larger population deviation (still within +/- 10%)

Option A



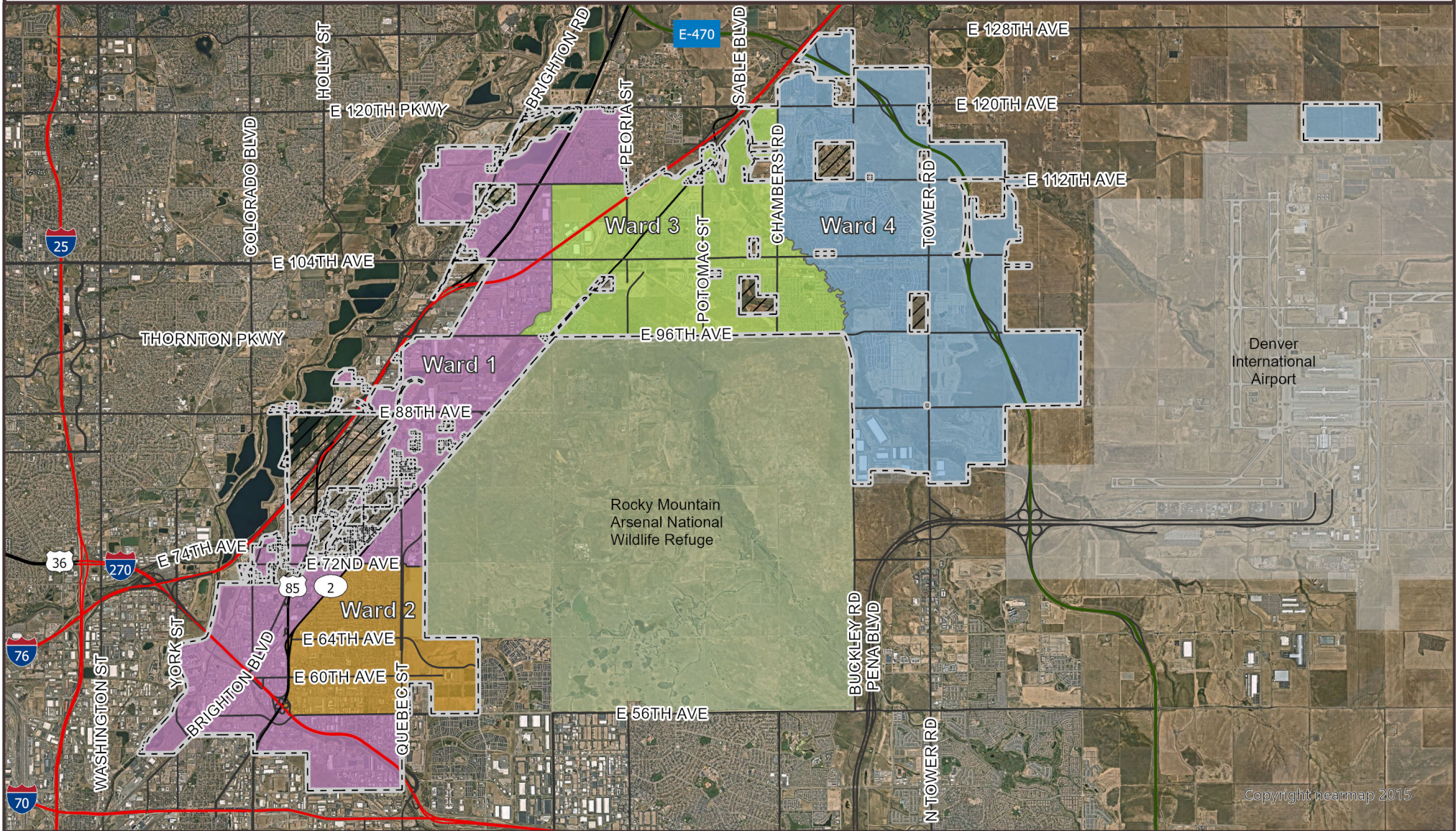
Quality Community for a Lifetime • c3gov.com





Commerce City Wards

Plan A



Coordinate System: NAD 1983 HARN
State Plane Colorado Central FIPS 0502 ft

Ward

- Ward 1
- Ward 2
- Ward 3
- Ward 4
- Commerce City Boundary
- Enclave

DISCLAIMER:

This product was produced by the Commerce City GIS Division. Commerce City has made every effort to produce data as accurately as possible. Maps are general representations and are produced for general representation only. This map may contain information that is no longer current. Use of this information is the sole responsibility of the user. Commerce City shall assume no liability for any errors, omissions, or inaccuracies in the information provided on the map.

Date Created: 3/1/2023

Copyright nearmap 2015

Option A Stats

Ward	Pop. (2020)	Target (2020)	% Dev.	% Total Non-Hispanic	% Total Hispanic
I	15,226	15,605	-2.43%	45.26%	54.74%
II	15,658	15,605	+0.34%	27.78%	72.22%
III	15,465	15,605	-0.90%	59.35%	40.65%
IV	16,069	15,605	+2.97%	71.53%	28.47%



Option A Redistricting Criteria

Equal Populations 😊

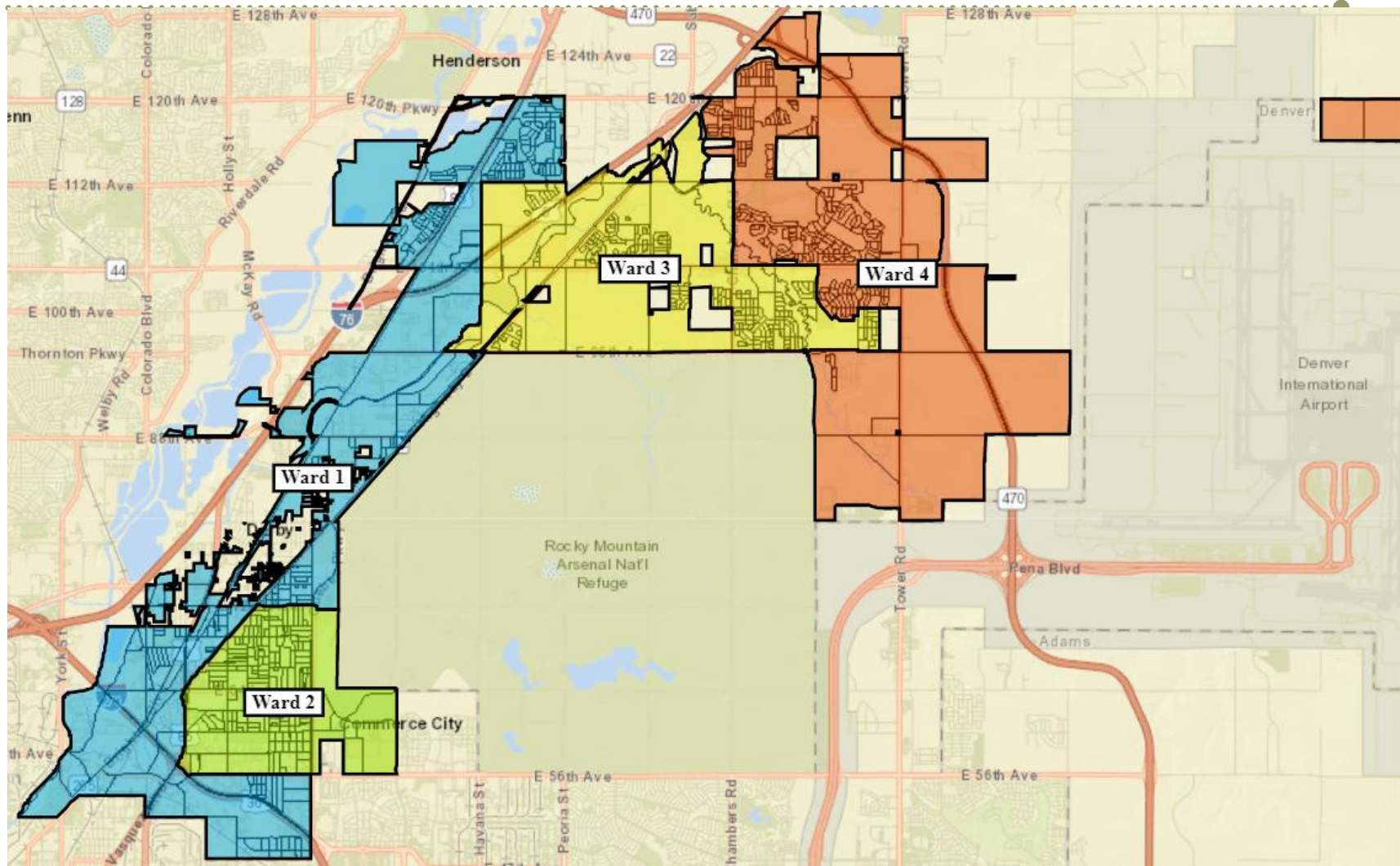
Racial Equality 😊

Compactness 😊

Contiguity 😐

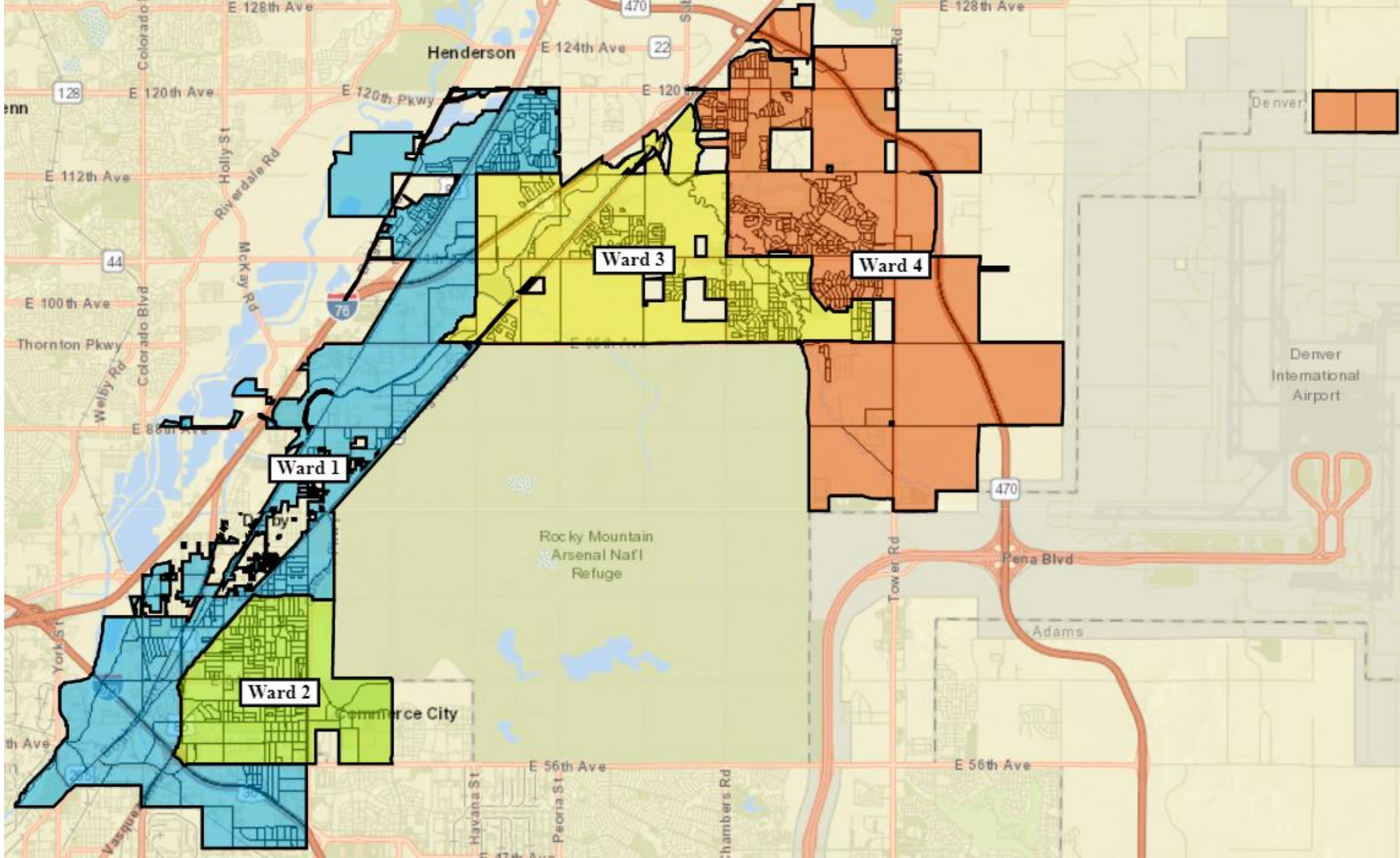
Communities of Interest 😊

Option B



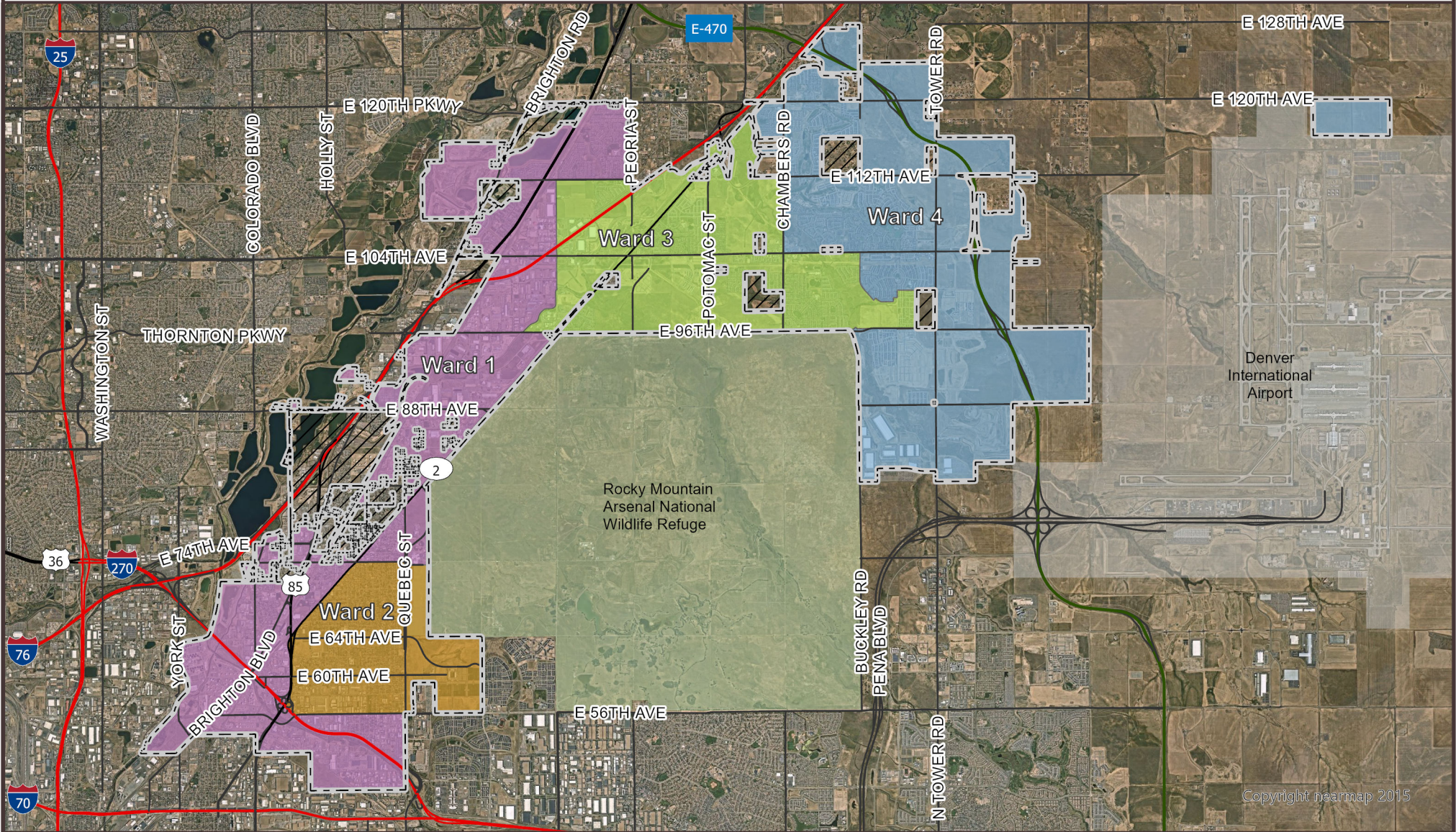
Quality Community for a Lifetime • c3gov.com





Commerce City Wards

Plan B



Copyright nearmap 2015



Coordinate System: NAD 1983 HARN
State Plane Colorado Central FIPS 0502 ft

- Ward
- Ward 1
 - Ward 2
 - Ward 3
 - Ward 4
- Commerce City Boundary
 Enclave

DISCLAIMER:

This product was produced by the Commerce City GIS Division. Commerce City has made every effort to produce data as accurately as possible. Maps are general representations and are produced for general representation only. This map may contain information that is no longer current. Use of this information is the sole responsibility of the user. Commerce City shall assume no liability for any errors, omissions, or inaccuracies in the information provided on the map.

Date Created: 3/1/2023

Option B Stats

Ward	Pop. (2020)	Target (2020)	% Dev.	% Total Non-Hispanic	% Total Hispanic
I	15,226	15,605	-2.43%	45.26%	54.74%
II	15,658	15,605	+0.34%	27.78%	72.22%
III	15,281	15,605	-2.08%	60.02%	39.98%
IV	16,256	15,605	+4.15%	70.76%	29.24%

Option B Redistricting Criteria

Equal Populations 😊

Racial Equality 😊

Compactness 😊

Contiguity 😐

Communities of Interest 😊

Feedback & Next Steps

Option A vs Option B

Introduction and approval on 1st reading tonight

2nd and Final Reading April 3, 2023

City Clerk will send final map to County for 2023 election

Public education in Connected and social media on new Wards ahead of election



End

