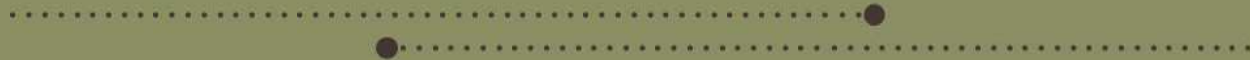




2022 Concrete Flatwork Program



Overview

- Purpose and Need
- Overall Project Goals
- Recommendations
- Funding
- Next Steps

Purpose and Need

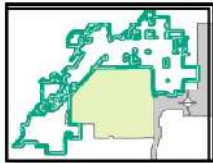
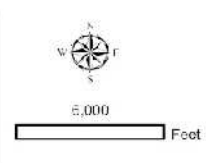
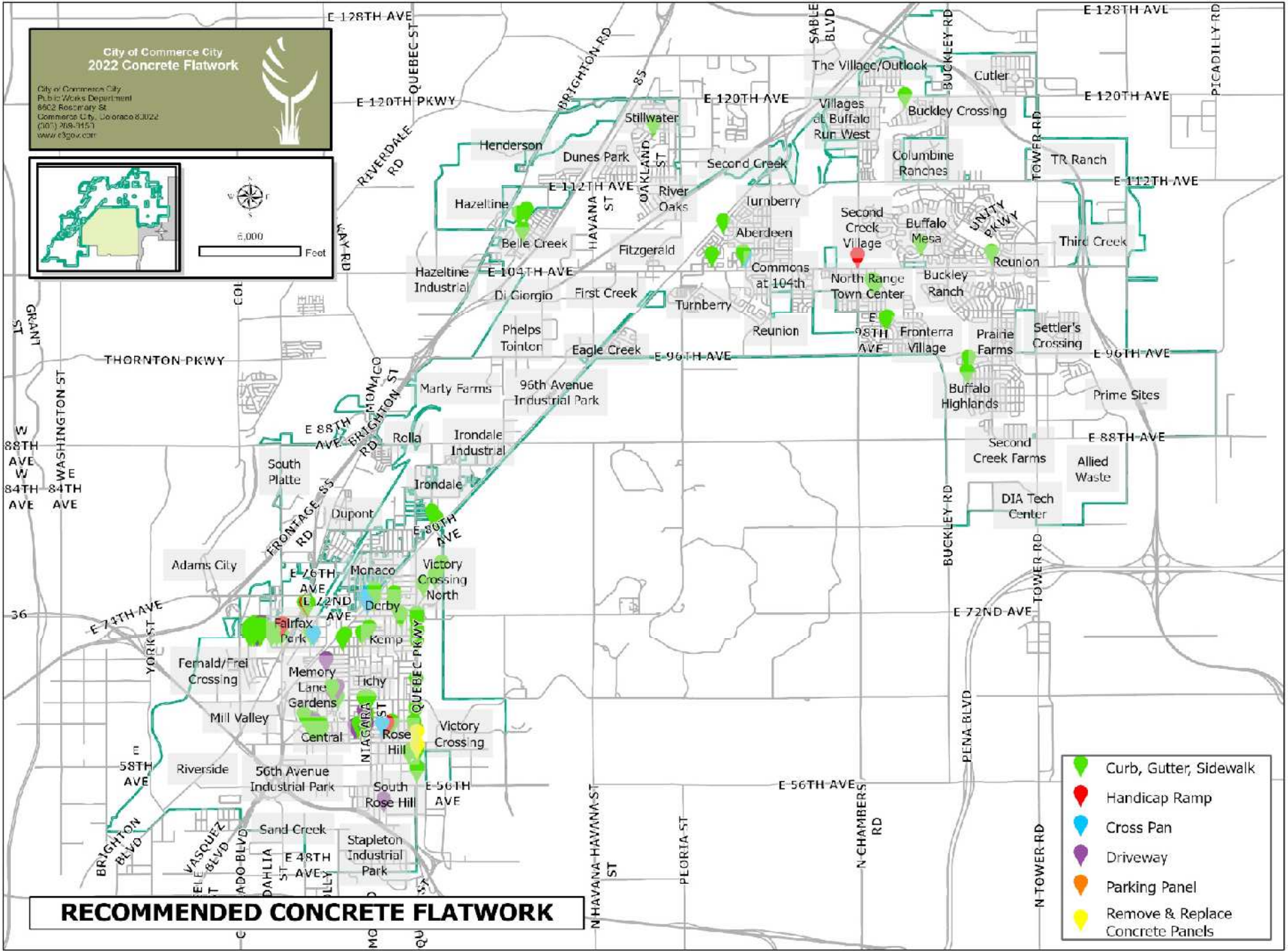
- This is the annual maintenance project to repair or replace damaged curb, gutter, sidewalk, concrete panels and concrete cross pans.
- To maintain public infrastructure and to improve community appearance by repairing and replacing broken concrete.

Overall Project Goals

- City is responsible for maintenance and improvements of concrete flatwork (sidewalks, curb, gutter, and handicap ramps)
- Repair damaged concrete in Pavement Management areas before mill and overlay begins.
- Repair damaged concrete that has been identified through our CRM system.
- Replace damaged concrete street panels
- Construct missing sidewalk to improve pedestrian connections

**City of Commerce City
2022 Concrete Flatwork**

City of Commerce City
Public Works Department
8602 Rosemary St
Commerce City, Colorado 80022
(303) 268-3151
www.c3gov.com

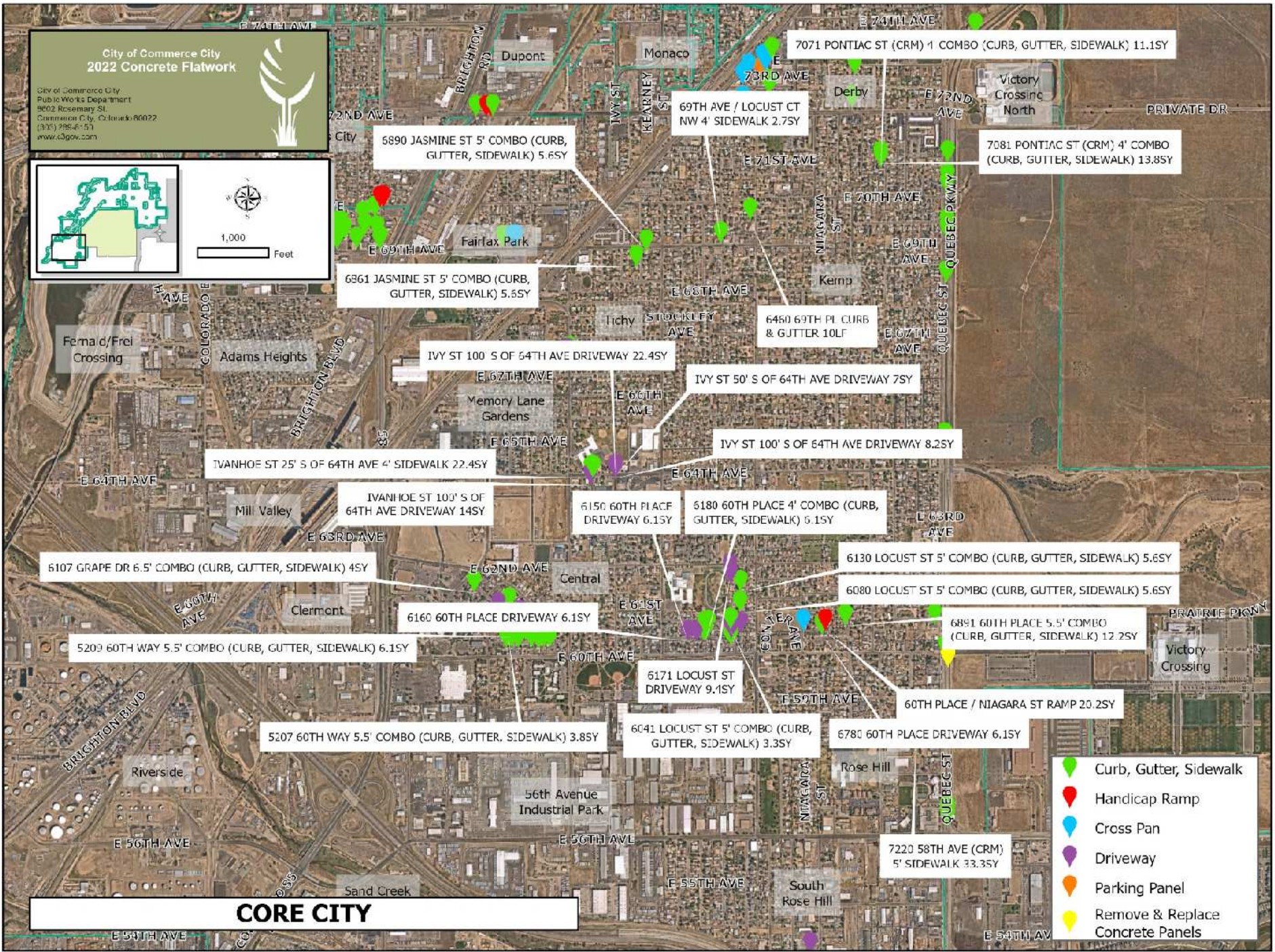
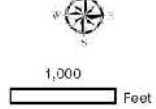
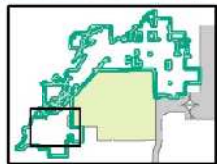





RECOMMENDED CONCRETE FLATWORK

-  Curb, Gutter, Sidewalk
-  Handicap Ramp
-  Cross Pan
-  Driveway
-  Parking Panel
-  Remove & Replace Concrete Panels

City of Commerce City
2022 Concrete Flatwork

City of Commerce City
Public Works Department
9602 Rosemary St.
Commerce City, Colorado 80022
(303) 296-6151
www.ci.gov.com



5890 JASMINE ST 5' COMBO (CURB, GUTTER, SIDEWALK) 5.65Y

69TH AVE / LOCUST CT NW 4' SIDEWALK 2.75Y

7071 PONTIAC ST (CRM) 1 COMBO (CURB, GUTTER, SIDEWALK) 11.15Y
7081 PONTIAC ST (CRM) 4' COMBO (CURB, GUTTER, SIDEWALK) 13.85Y

6861 JASMINE ST 5' COMBO (CURB, GUTTER, SIDEWALK) 5.55Y

6450 69TH PL CURB & GUTTER 10LF

IVY ST 100' S OF 64TH AVE DRIVEWAY 22.45Y

IVY ST 50' S OF 64TH AVE DRIVEWAY 75Y

IVY ST 100' S OF 64TH AVE DRIVEWAY 8.25Y

IVANHOE ST 25' S OF 64TH AVE 4' SIDEWALK 22.45Y

IVANHOE ST 100' S OF 64TH AVE DRIVEWAY 145Y

6150 60TH PLACE DRIVEWAY 6.15Y

6180 60TH PLACE 4' COMBO (CURB, GUTTER, SIDEWALK) 6.15Y

6107 GRAPE DR 6.5' COMBO (CURB, GUTTER, SIDEWALK) 45Y

6130 LOCUST ST 5' COMBO (CURB, GUTTER, SIDEWALK) 5.65Y

6080 LOCUST ST 5' COMBO (CURB, GUTTER, SIDEWALK) 5.65Y

6160 60TH PLACE DRIVEWAY 6.15Y

6891 60TH PLACE 5.5' COMBO (CURB, GUTTER, SIDEWALK) 12.25Y

5209 60TH WAY 5.5' COMBO (CURB, GUTTER, SIDEWALK) 6.15Y

6171 LOCUST ST DRIVEWAY 9.15Y

60TH PLACE / NIAGARA ST RAMP 20.25Y

5207 60TH WAY 5.5' COMBO (CURB, GUTTER, SIDEWALK) 3.85Y

6041 LOCUST ST 5' COMBO (CURB, GUTTER, SIDEWALK) 3.35Y

6780 60TH PLACE DRIVEWAY 6.15Y

7220 58TH AVE (CRM) 5' SIDEWALK 33.35Y

CORE CITY

- Curb, Gutter, Sidewalk
- Handicap Ramp
- Cross Pan
- Driveway
- Parking Panel
- Remove & Replace Concrete Panels

Recommendations/Concrete Flatwork

Location	Improvement	Estimated Quantity	Unit (SY) or (LF)	Unit Cost	Estimated Cost	Fund
6180 60th Place	4' Combo (Curb, Gutter, Sidewalk)	6.1	SY	\$ 108.35	\$ 661	Core City Infr Imp
Ivanhoe St 25' S of 64th Ave	4' Sidewalk	2.4	SY	\$ 108.35	\$ 260	Core City Infr Imp
Ivanhoe St 25' S of 64th Ave	4' Sidewalk	22.4	SY	\$ 108.35	\$ 2,427	Core City Infr Imp
Ivy St 50' N of 63rd Ave	4' Sidewalk	8.9	SY	\$ 108.35	\$ 964	Core City Infr Imp
6009 Locust St	5' Combo (Curb, Gutter, Sidewalk)	5.6	SY	\$ 108.35	\$ 607	Core City Infr Imp
6041 Locust St	5' Combo (Curb, Gutter, Sidewalk)	3.3	SY	\$ 108.35	\$ 358	Core City Infr Imp
6080 Locust St	5' Combo (Curb, Gutter, Sidewalk)	5.6	SY	\$ 108.35	\$ 607	Core City Infr Imp
6130 Locust St	5' Combo (Curb, Gutter, Sidewalk)	5.6	SY	\$ 108.35	\$ 607	Core City Infr Imp
6861 Jasmine St	5' Combo (Curb, Gutter, Sidewalk)	5.6	SY	\$ 108.35	\$ 607	Core City Infr Imp
6890 Jasmine St	5' Combo (Curb, Gutter, Sidewalk)	5.6	SY	\$ 108.35	\$ 607	Core City Infr Imp
5204 60th Way	5.5' Combo (Curb, Gutter, Sidewalk)	12.2	SY	\$ 108.35	\$ 1,322	Core City Infr Imp
5206 60th Way	5.5' Combo (Curb, Gutter, Sidewalk)	24.4	SY	\$ 108.35	\$ 2,644	Core City Infr Imp
5207 60th Way	5.5' Combo (Curb, Gutter, Sidewalk)	3.8	SY	\$ 108.35	\$ 412	Core City Infr Imp



Recommendations/Concrete Flatwork

Location	Improvement	Estimated Quantity	Unit (SY) or (LF)	Unit Cost	Estimated Cost	Fund
5208 60th Way	5.5' Combo (Curb, Gutter, Sidewalk)	18.3	SY	\$ 108.35	\$ 1,983	Core City Infr Imp
5209 60th Way	5.5' Combo (Curb, Gutter, Sidewalk)	6.1	SY	\$ 108.35	\$ 661	Core City Infr Imp
5401 60th Way	5.5' Combo (Curb, Gutter, Sidewalk)	36.7	SY	\$ 108.35	\$ 3,976	Core City Infr Imp
5402 60th Way	5.5' Combo (Curb, Gutter, Sidewalk)	12.2	SY	\$ 108.35	\$ 1,322	Core City Infr Imp
5404 60th Way	5.5' Combo (Curb, Gutter, Sidewalk)	30.6	SY	\$ 108.35	\$ 3,316	Core City Infr Imp
5406 60th Way	5.5' Combo (Curb, Gutter, Sidewalk)	12.2	SY	\$ 108.35	\$ 1,322	Core City Infr Imp
5408 60th Way	5.5' Combo (Curb, Gutter, Sidewalk)	24.4	SY	\$ 108.35	\$ 2,644	Core City Infr Imp
5451 60th Way	5.5' Combo (Curb, Gutter, Sidewalk)	24.4	SY	\$ 108.35	\$ 2,644	Core City Infr Imp
6005 Hudson St	5.5' Combo (Curb, Gutter, Sidewalk)	12.2	SY	\$ 108.35	\$ 1,322	Core City Infr Imp
6181 60th Place	5.5' Combo (Curb, Gutter, Sidewalk)	18.3	SY	\$ 108.35	\$ 1,983	Core City Infr Imp
6191 60th Place	5.5' Combo (Curb, Gutter, Sidewalk)	12.2	SY	\$ 108.35	\$ 1,322	Core City Infr Imp
6780 60th Place	5.5' Combo (Curb, Gutter, Sidewalk)	24.4	SY	\$ 108.35	\$ 2,644	Core City Infr Imp
6891 60th Place	5.5' Combo (Curb, Gutter, Sidewalk)	12.2	SY	\$ 108.35	\$ 1,322	Core City Infr Imp
6006 Grape Dr	6.5' Combo (Curb, Gutter, Sidewalk)	15.2	SY	\$ 108.35	\$ 1,647	Core City Infr Imp



Recommendations/Concrete Flatwork

Location	Improvement	Estimated Quantity	Unit (SY) or (LF)	Unit Cost	Estimated Cost	Fund
6011 Grape Dr	6.5' Combo (Curb, Gutter, Sidewalk)	7.6	SY	\$ 108.35	\$ 823	Core City Infr Imp
6014 Grape Dr	6.5' Combo (Curb, Gutter, Sidewalk)	7.6	SY	\$ 108.35	\$ 823	Core City Infr Imp
6107 Grape Dr	6.5' Combo (Curb, Gutter, Sidewalk)	4.0	SY	\$ 108.35	\$ 433	Core City Infr Imp
6380 63rd Ave	6.5' Combo (Curb, Gutter, Sidewalk)	6.5	SY	\$ 108.35	\$ 704	Core City Infr Imp
6390 63rd Ave	6.5' Combo (Curb, Gutter, Sidewalk)	7.2	SY	\$ 108.35	\$ 780	Core City Infr Imp
6480 63rd Ave	6.5' Combo (Curb, Gutter, Sidewalk)	14.4	SY	\$ 108.35	\$ 1,560	Core City Infr Imp
6460 69th Pl	Curb & Gutter	10.0	LF	\$ 58.15	\$ 582	Core City Infr Imp
6971 Dahlia St	Curb & Gutter	15.0	LF	\$ 58.15	\$ 872	Core City Infr Imp
Dahlia St 5' N of 69th Ave west side	Curb & Gutter	10.0	LF	\$ 58.15	\$ 582	Core City Infr Imp
Dexter St 25' W of 69th Ave west side	Curb & Gutter	20.0	LF	\$ 58.15	\$ 1,163	Core City Infr Imp
6006 Grape Dr	Driveway	7.6	SY	\$ 108.35	\$ 823	Core City Infr Imp
6011 Grape Dr	Driveway	7.6	SY	\$ 108.35	\$ 823	Core City Infr Imp
6025 Locust St	Driveway	11.1	SY	\$ 108.35	\$ 1,203	Core City Infr Imp
6033 Locust St	Driveway	11.1	SY	\$ 108.35	\$ 1,203	Core City Infr Imp
6034 Locust St	Driveway	5.6	SY	\$ 108.35	\$ 607	Core City Infr Imp

Recommendations/Concrete Flatwork

Location	Improvement	Estimated Quantity	Unit (SY) or (LF)	Unit Cost	Estimated Cost	Fund
6150 60th Place	Driveway	6.1	SY	\$ 108.35	\$ 661	Core City Infr Imp
6151 Locust St	Driveway	7.8	SY	\$ 108.35	\$ 845	Core City Infr Imp
6160 60th Place	Driveway	6.1	SY	\$ 108.35	\$ 661	Core City Infr Imp
6171 Locust St	Driveway	9.4	SY	\$ 108.35	\$ 1,018	Core City Infr Imp
6780 60th Place	Driveway	6.1	SY	\$ 108.35	\$ 661	Core City Infr Imp
Ivanhoe St 100' S of 64th Ave	Driveway	14.0	SY	\$ 108.35	\$ 1,517	Core City Infr Imp
Ivy St 100' S of 64th Ave	Driveway	8.2	SY	\$ 108.35	\$ 888	Core City Infr Imp
Ivy St 100' S of 64th Ave	Driveway	22.4	SY	\$ 108.35	\$ 2,427	Core City Infr Imp
Ivy St 50' S of 64th Ave	Driveway	7.0	SY	\$ 108.35	\$ 758	Core City Infr Imp
60th Place / Niagara St	Ramp	20.2	SY	\$ 130.70	\$ 2,640	Core City Infr Imp
7071 Pontiac St (CRM)	4' Combo (Curb, Gutter, Sidewalk)	11.1	SY	\$ 108.35	\$ 1,203	Core City Infr Imp
7081 Pontiac St (CRM)	4' Combo (Curb, Gutter, Sidewalk)	13.8	SY	\$ 108.35	\$ 1,495	Core City Infr Imp
69th Ave / Locust Ct NW	4' Sidewalk	2.7	SY	\$ 108.35	\$ 293	Core City Infr Imp
7220 58th Ave (CRM)	5' Sidewalk	33.3	SY	\$ 108.35	\$ 3,608	Core City Infr Imp
60th Place / Niagara St	Cross Pan	10.4	SY	\$ 122.40	\$ 1,273	Core City Infr Imp

Recommendations/Concrete Flatwork

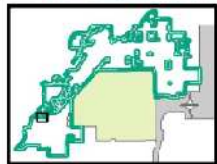
Location	Improvement	Estimated Quantity	Unit (SY) or (LF)	Unit Cost	Estimated Cost	Fund,
5365 Newport St (CRM)	Driveway	3.1	SY	\$ 108.35	\$ 336	Core City Infr Imp
Ivanhoe St 10' S of 64th Ave	Curb & Gutter	29.0	LF	\$ 58.15	\$ 1,686	Core City Infr Imp
CORE CITY ESTIMATED TOTAL COST					\$ 72,524	



Commerce
CITY

City of Commerce City
2022 Concrete Flatwork

City of Commerce City
Public Works Department
8032 Rossmore St
Commerce City, Colorado 80022
(303) 269-3150
www.c3gov.com



330 Feet



ADAMS CITY

-  Curb, Gutter, Sidewalk
-  Handicap Ramp
-  Driveway

Recommendations/Concrete Flatwork

Location	Improvement	Estimated Quantity	Unit (SY) or (LF)	Unit Cost	Estimated Cost	Fund
69th Ave / Dahlia St NW	4' Combo (Curb, Gutter, Sidewalk)	7.6	SY	\$ 108.35	\$ 823	Concrete Flatwork
69th Ave / Dahlia St NW	Ramp	15.1	SY	\$ 130.70	\$ 1,974	Core City Infr Imp
6917 Dahlia St	4' Sidewalk	2.7	SY	\$ 108.35	\$ 293	Concrete Flatwork
4200 69th Ave	5.5' Combo (Curb, Gutter, Sidewalk)	24.4	SY	\$ 108.35	\$ 2,644	Concrete Flatwork
4200 69th Pl	5.5' Combo (Curb, Gutter, Sidewalk)	6.1	SY	\$ 108.35	\$ 661	Concrete Flatwork
4201 69th Ave	5.5' Combo (Curb, Gutter, Sidewalk)	6.1	SY	\$ 108.35	\$ 661	Concrete Flatwork
4201 69th Pl	5.5' Combo (Curb, Gutter, Sidewalk)	6.1	SY	\$ 108.35	\$ 661	Concrete Flatwork
4211 69th Ave	5.5' Combo (Curb, Gutter, Sidewalk)	6.1	SY	\$ 108.35	\$ 661	Concrete Flatwork
4211 69th Pl	5.5' Combo (Curb, Gutter, Sidewalk)	22.0	SY	\$ 108.35	\$ 2,384	Concrete Flatwork
4220 69th Ave	5.5' Combo (Curb, Gutter, Sidewalk)	6.1	SY	\$ 108.35	\$ 661	Concrete Flatwork
4220 69th Pl	5.5' Combo (Curb, Gutter, Sidewalk)	36.7	SY	\$ 108.35	\$ 3,976	Concrete Flatwork
4221 69th Ave	5.5' Combo (Curb, Gutter, Sidewalk)	24.4	SY	\$ 108.35	\$ 2,644	Concrete Flatwork
4221 69th Pl	5.5' Combo (Curb, Gutter, Sidewalk)	6.1	SY	\$ 108.35	\$ 661	Concrete Flatwork
4230 69th Pl	5.5' Combo (Curb, Gutter, Sidewalk)	12.2	SY	\$ 108.35	\$ 1,322	Concrete Flatwork

Recommendations/Concrete Flatwork

Location	Improvement	Estimated Quantity	Unit (SY) or (LF)	Unit Cost	Estimated Cost	Fund
4231 69th Pl	5.5' Combo (Curb, Gutter, Sidewalk)	30.6	SY	\$ 108.35	\$ 3,316	Concrete Flatwork
4240 69th Pl	5.5' Combo (Curb, Gutter, Sidewalk)	36.7	SY	\$ 108.35	\$ 3,976	Concrete Flatwork
4241 69th Ave	5.5' Combo (Curb, Gutter, Sidewalk)	30.5	SY	\$ 108.35	\$ 3,305	Concrete Flatwork
4250 69th Ave	5.5' Combo (Curb, Gutter, Sidewalk)	9.2	SY	\$ 108.35	\$ 997	Concrete Flatwork
4250 69th Pl	5.5' Combo (Curb, Gutter, Sidewalk)	42.8	SY	\$ 108.35	\$ 4,637	Concrete Flatwork
4251 69th Ave	5.5' Combo (Curb, Gutter, Sidewalk)	30.5	SY	\$ 108.35	\$ 3,305	Concrete Flatwork
4251 69th Pl	5.5' Combo (Curb, Gutter, Sidewalk)	6.1	SY	\$ 108.35	\$ 661	Concrete Flatwork
4255 69th Pl	5.5' Combo (Curb, Gutter, Sidewalk)	6.1	SY	\$ 108.35	\$ 661	Concrete Flatwork
4256 69th Ave	5.5' Combo (Curb, Gutter, Sidewalk)	6.1	SY	\$ 108.35	\$ 661	Concrete Flatwork
4260 69th Pl	5.5' Combo (Curb, Gutter, Sidewalk)	12.2	SY	\$ 108.35	\$ 1,322	Concrete Flatwork
4261 69th Ave	5.5' Combo (Curb, Gutter, Sidewalk)	12.2	SY	\$ 108.35	\$ 1,322	Concrete Flatwork
4261 69th Pl	5.5' Combo (Curb, Gutter, Sidewalk)	6.1	SY	\$ 108.35	\$ 661	Concrete Flatwork
4270 69th Ave	5.5' Combo (Curb, Gutter, Sidewalk)	15.9	SY	\$ 108.35	\$ 1,723	Concrete Flatwork
4270 69th Pl	5.5' Combo (Curb, Gutter, Sidewalk)	6.1	SY	\$ 108.35	\$ 661	Concrete Flatwork



Recommendations/Concrete Flatwork

Location	Improvement	Estimated Quantity	Unit (SY) or (LF)	Unit Cost	Estimated Cost	Fund
4271 69th Ave	5.5' Combo (Curb, Gutter, Sidewalk)	12.2	SY	\$ 108.35	\$ 1,322	Concrete Flatwork
4280 69th Ave	5.5' Combo (Curb, Gutter, Sidewalk)	42.8	SY	\$ 108.35	\$ 4,637	Concrete Flatwork
4280 69th Pl	5.5' Combo (Curb, Gutter, Sidewalk)	24.4	SY	\$ 108.35	\$ 2,644	Concrete Flatwork
4281 69th Ave	5.5' Combo (Curb, Gutter, Sidewalk)	12.2	SY	\$ 108.35	\$ 1,322	Concrete Flatwork
4290 69th Ave	5.5' Combo (Curb, Gutter, Sidewalk)	21.4	SY	\$ 108.35	\$ 2,319	Concrete Flatwork
4290 69th Pl	5.5' Combo (Curb, Gutter, Sidewalk)	18.3	SY	\$ 108.35	\$ 1,983	Concrete Flatwork
4291 69th Pl	5.5' Combo (Curb, Gutter, Sidewalk)	6.1	SY	\$ 108.35	\$ 661	Concrete Flatwork
4295 69th Ave	5.5' Combo (Curb, Gutter, Sidewalk)	6.1	SY	\$ 108.35	\$ 661	Concrete Flatwork
4296 69th Ave	5.5' Combo (Curb, Gutter, Sidewalk)	6.1	SY	\$ 108.35	\$ 661	Concrete Flatwork
4296 69th Pl	5.5' Combo (Curb, Gutter, Sidewalk)	6.1	SY	\$ 108.35	\$ 661	Concrete Flatwork
6900 Birch St	5.5' Combo (Curb, Gutter, Sidewalk)	6.1	SY	\$ 108.35	\$ 661	Concrete Flatwork
6930 Birch St	5.5' Combo (Curb, Gutter, Sidewalk)	6.1	SY	\$ 108.35	\$ 661	Concrete Flatwork
6930 Cherry St	5.5' Combo (Curb, Gutter, Sidewalk)	12.2	SY	\$ 108.35	\$ 1,322	Concrete Flatwork
6934 Cherry St	5.5' Combo (Curb, Gutter, Sidewalk)	24.4	SY	\$ 108.35	\$ 2,644	Concrete Flatwork



Recommendations/Concrete Flatwork

Location	Improvement	Estimated Quantity	Unit (SY) or (LF)	Unit Cost	Estimated Cost	Fund
6990 Birch St	5.5' Combo (Curb, Gutter, Sidewalk)	6.1	SY	\$ 108.35	\$ 661	Concrete Flatwork
Birch St 30' S of 69th Pl west side	5.5' Combo (Curb, Gutter, Sidewalk)	18.3	SY	\$ 108.35	\$ 1,983	Concrete Flatwork
Birch St 40' S of 69th Pl west side	5.5' Combo (Curb, Gutter, Sidewalk)	6.1	SY	\$ 108.35	\$ 661	Concrete Flatwork
Birch St 50' S of 70th Ave west side	5.5' Combo (Curb, Gutter, Sidewalk)	12.2	SY	\$ 108.35	\$ 1,322	Concrete Flatwork
Cherry St 50' N of 69th Ave west side	5.5' Combo (Curb, Gutter, Sidewalk)	15.3	SY	\$ 108.35	\$ 1,658	Concrete Flatwork
Cherry St 50' N of 69th Ave eastside	5' Combo (Curb, Gutter, Sidewalk)	13.9	SY	\$ 108.35	\$ 1,506	Concrete Flatwork
4220 70th Ave	6.5' Combo (Curb, Gutter, Sidewalk)	10.8	SY	\$ 108.35	\$ 1,170	Concrete Flatwork
4240 70th Ave	6.5' Combo (Curb, Gutter, Sidewalk)	14.4	SY	\$ 108.35	\$ 1,560	Concrete Flatwork
4240 70th Ave	Driveway	4.3	SY	\$ 108.35	\$ 466	Concrete Flatwork
4256 70th Ave	6.5' Combo (Curb, Gutter, Sidewalk)	7.2	SY	\$ 108.35	\$ 780	Concrete Flatwork
4270 70th Ave	6.5' Combo (Curb, Gutter, Sidewalk)	5.8	SY	\$ 108.35	\$ 628	Concrete Flatwork
4270 70th Ave	6.5' Combo (Curb, Gutter, Sidewalk)	11.4	SY	\$ 108.35	\$ 1,235	Concrete Flatwork
4280 70th Ave	6.5' Combo (Curb, Gutter, Sidewalk)	7.2	SY	\$ 108.35	\$ 780	Concrete Flatwork
6920 Dexter St	6.5' Combo (Curb, Gutter, Sidewalk)	7.2	SY	\$ 108.35	\$ 780	Concrete Flatwork

Recommendations/Concrete Flatwork

Location	Improvement	Estimated Quantity	Unit (SY) or (LF)	Unit Cost	Estimated Cost	Fund
6960 Dexter St	6.5' Combo (Curb, Gutter, Sidewalk)	14.4	SY	\$ 108.35	\$ 1,560	Concrete Flatwork
70th Ave / Birch St SW	6.5' Combo (Curb, Gutter, Sidewalk)	21.7	SY	\$ 108.35	\$ 2,351	Concrete Flatwork
70th Ave / Dahlia St SE	Ramp	9.3	SY	\$ 130.70	\$ 1,216	Core City Infr Imp
70th Ave / Dahlia St SW	Ramp	9.3	SY	\$ 130.70	\$ 1,216	Core City Infr Imp
70th Ave 10' E of Birch St south side	6.5' Combo (Curb, Gutter, Sidewalk)	21.7	SY	\$ 108.35	\$ 2,351	Concrete Flatwork
4361 70th Ave	Curb & Gutter	33.0	LF	\$ 58.15	\$ 1,919	Concrete Flatwork
4371 70th Ave	Curb & Gutter	43.0	LF	\$ 58.15	\$ 2,500	Concrete Flatwork
4381 70th Ave	Curb & Gutter	34.0	LF	\$ 58.15	\$ 1,977	Concrete Flatwork
4391 70th Ave	Curb & Gutter	29.0	LF	\$ 58.15	\$ 1,686	Concrete Flatwork
4260 70th Ave	Driveway	10.1	SY	\$ 108.35	\$ 1,094	Concrete Flatwork
4270 69th Ave	Driveway	12.2	SY	\$ 108.35	\$ 1,322	Concrete Flatwork
4405 70th Ave	Driveway	22.7	SY	\$ 108.35	\$ 2,460	Concrete Flatwork
Dexter St 25' W of 69th Ave west side	Driveway	15.9	SY	\$ 108.35	\$ 1,723	Concrete Flatwork
Dexter St 25' W of 69th Ave west side	Curb & Gutter	20.0	LF	\$ 58.15	\$ 1,163	Core City Infr Imp
Dahlia St 5' N of 69th Ave west side	Curb & Gutter	10.0	LF	\$ 58.15	\$ 582	Core City Infr Imp

Recommendations/Concrete Flatwork

Location	Improvement	Estimated Quantity	Unit (SY) or (LF)	Unit Cost	Estimated Cost	Fund
6971 Dahlia St	Curb & Gutter	15.0	LF	\$ 58.15	\$ 872	Core City Infr Imp
CORE CITY INFRASTRUCTURE IMPROVEMENTS FUND					\$ 7,021	
CONCRETE FLATWORK FUND					\$ 108,881	
ADAMS CITY TOTAL ESTIMATED COST					\$ 115,902	



**City of Commerce City
2022 Concrete Flatwork**




City of Commerce City
Public Works Department
9032 Rossmore St
Commerce City, Colorado 80022
(303) 269-3150
www.c3gov.com



210 Feet



DERBY

-  Curb, Gutter, Sidewalk
-  Cross Pan
-  Parking Panel

Recommendations/Concrete Flatwork

Location	Improvement	Estimated Quantity	Unit (SY) or (LF)	Unit Cost	Estimated Cost	Fund
7253 Monaco St	3' Sidewalk	2.0	SY	\$ 108.35	\$ 217	Core City Infr Imp
Monaco St 60' S of 72nd Pl Westside	3.5' Sidewalk	3.9	SY	\$ 108.35	\$ 423	Core City Infr Imp
7234 Monaco St	4' Sidewalk	16.4	SY	\$ 108.35	\$ 1,777	Core City Infr Imp
7270 Oneida St	6' Sidewalk	13.3	SY	\$ 108.35	\$ 1,441	Core City Infr Imp
7272 Locust St	Cross Pan	4.4	SY	\$ 122.40	\$ 539	Core City Infr Imp
7287 Monaco St	Cross Pan	11.6	SY	\$ 122.40	\$ 1,420	Core City Infr Imp
7295 Monaco St	Cross Pan	10.7	SY	\$ 122.40	\$ 1,310	Core City Infr Imp
Locust St 25' N of 72nd Ave	Cross Pan	21.8	SY	\$ 122.40	\$ 2,668	Core City Infr Imp
Locust St 25' N of 72nd Pl	Cross Pan	7.6	SY	\$ 122.40	\$ 930	Core City Infr Imp
73rd Ave 50' E of Monaco north side	Curb & Gutter	20.0	LF	\$ 58.15	\$ 1,163	Core City Infr Imp
7253 Monaco St	Parking Panel	5.0	SY	\$ 161.00	\$ 805	Core City Infr Imp
7272 Locust St	Parking Panel	24.4	SY	\$ 161.00	\$ 3,928	Core City Infr Imp
7295 Monaco St	Parking Panel	20.0	SY	\$ 161.00	\$ 3,220	Core City Infr Imp
Locust St 25' N of 72nd Ave Westside	Parking Panel	20.0	SY	\$ 161.00	\$ 3,220	Core City Infr Imp

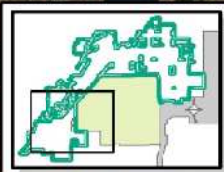
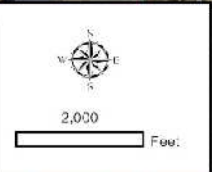
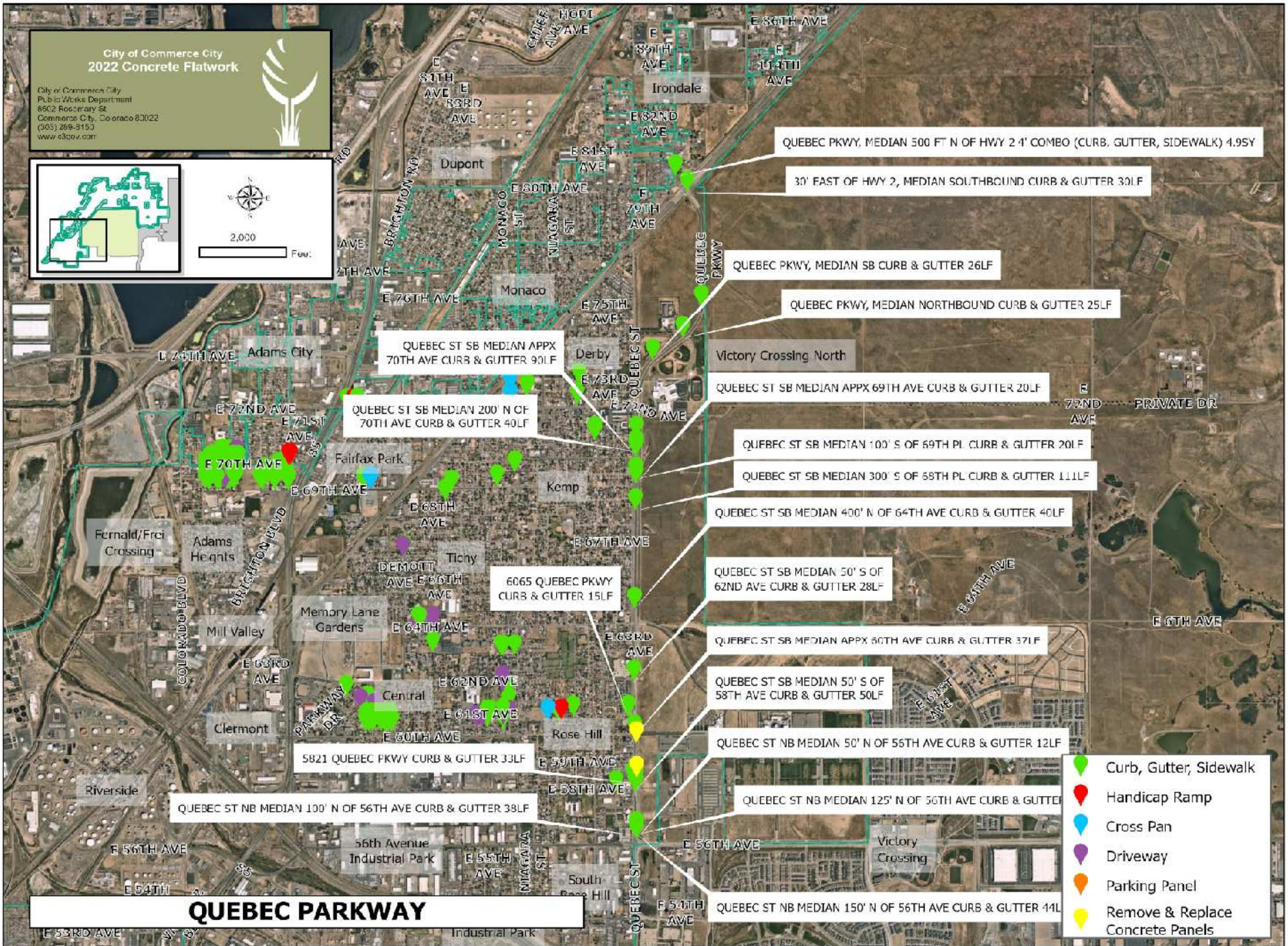
Recommendations/Concrete Flatwork

Location	Improvement	Estimated Quantity	Unit (SY) or (LF)	Unit Cost	Estimated Cost	Fund
Locust St 25' N of 72nd Ave Westside	Parking Panel	11.0	SY	\$ 161.00	\$ 1,771	Core City Infr Imp
Oneida St 50' N of 72nd Ave eastside	4' Sidewalk	11.8	SY	\$ 108.35	\$ 1,279	Core City Infr Imp
Monaco St 75' S of 72nd Pl Westside	5' Sidewalk	5.6	SY	\$ 108.35	\$ 607	Core City Infr Imp
DERBY TOTAL ESTIMATED COST					\$ 26,717	



City of Commerce City
2022 Concrete Flatwork

City of Commerce City
Public Works Department
6802 Rosary St
Commerce City, Colorado 80022
(303) 269-3153
www.c3gov.com

-  Curb, Gutter, Sidewalk
-  Handicap Ramp
-  Cross Pan
-  Driveway
-  Parking Panel
-  Remove & Replace Concrete Panels

Recommendations/Concrete Flatwork

Location	Improvement	Estimated Quantity	Unit (SY) or (LF)	Unit Cost	Estimated Cost	Fund
Quebec Pkwy, 500 ft N of Hwy 2	4' Combo (Curb, Gutter, Sidewalk)	4.9	SY	\$ 108.35	\$ 531	Concrete Flatwork
Quebec Pkwy, median SB	Curb & Gutter	52.5	LF	\$ 58.15	\$ 3,053	Concrete Flatwork
Quebec Pkwy, northbound	Curb & Gutter	36.3	LF	\$ 58.15	\$ 2,111	Concrete Flatwork
Quebec Pkwy, southbound	Curb & Gutter	26.0	LF	\$ 58.15	\$ 1,512	Concrete Flatwork
Quebec St NB median 100' N of 56th Ave	Curb & Gutter	38.0	LF	\$ 58.15	\$ 2,210	Concrete Flatwork
Quebec St NB median 100' N of 58th Ave	Curb & Gutter	15.0	LF	\$ 58.15	\$ 872	Concrete Flatwork
Quebec St NB median 100' S of 58th Ave	Curb & Gutter	11.0	LF	\$ 58.15	\$ 640	Concrete Flatwork
Quebec St NB median 125' N of 56th Ave	Curb & Gutter	14.5	LF	\$ 58.15	\$ 843	Concrete Flatwork
Quebec St NB median 150' N of 56th Ave	Curb & Gutter	44.0	LF	\$ 58.15	\$ 2,559	Concrete Flatwork
Quebec St NB median 25' N of 58th Ave	Curb & Gutter	45.0	LF	\$ 58.15	\$ 2,617	Concrete Flatwork
Quebec St NB median 50' N of 56th Ave	Curb & Gutter	12.0	LF	\$ 58.15	\$ 698	Concrete Flatwork
Quebec St SB median 100' S of 69th Pl	Curb & Gutter	20.0	LF	\$ 58.15	\$ 1,163	Concrete Flatwork
Quebec St SB median 200' N of 70th Ave	Curb & Gutter	40.0	LF	\$ 58.15	\$ 2,326	Concrete Flatwork
Quebec St SB median 300' S of 68th Pl	Curb & Gutter	111.0	LF	\$ 58.15	\$ 6,455	Concrete Flatwork

Recommendations/Concrete Flatwork

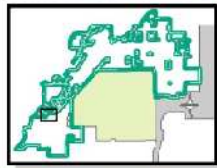
Location	Improvement	Estimated Quantity	Unit (SY) or (LF)	Unit Cost	Estimated Cost	Fund
Quebec St SB median 400' N of 64th Ave	Curb & Gutter	40.0	LF	\$ 58.15	\$ 2,326	Concrete Flatwork
Quebec St SB median 50' S of 58th Ave	Curb & Gutter	50.0	LF	\$ 58.15	\$ 2,908	Concrete Flatwork
Quebec St SB median 50' S of 62nd Ave	Curb & Gutter	28.0	LF	\$ 58.15	\$ 1,628	Concrete Flatwork
Quebec St SB median appx 60th Ave	Curb & Gutter	37.0	LF	\$ 58.15	\$ 2,152	Concrete Flatwork
Quebec St SB median appx 69th Ave	Curb & Gutter	20.0	LF	\$ 58.15	\$ 1,163	Concrete Flatwork
Quebec St SB median appx 70th Ave	Curb & Gutter	90.0	LF	\$ 58.15	\$ 5,234	Concrete Flatwork
Quebec St SB median appx 71st Ave	Curb & Gutter	28.0	LF	\$ 58.15	\$ 1,628	Concrete Flatwork
5821 Quebec Pkwy	Curb & Gutter	33.0	LF	\$ 58.15	\$ 1,919	Core City Infr Imp
6065 Quebec Pkwy	Curb & Gutter	15.0	LF	\$ 58.15	\$ 872	Core City Infr Imp
225' North Of 58th Ave NB center lane	Remove & Replace Concrete Panels	40	SY	\$ 161.00	\$ 6,440	Concrete Flatwork
225' South of 60th Ave NB center lane	Remove & Replace Concrete Panels	16	SY	\$ 161.00	\$ 2,576	Concrete Flatwork
CONCRETE FLATWORK FUND					\$ 53,642	
CORE CITY INFRASTRUCTURE IMPROVEMENTS FUND					\$ 2,791	
QUEBEC PARKWAY TOTAL ESTIMATED COST					\$ 56,433	



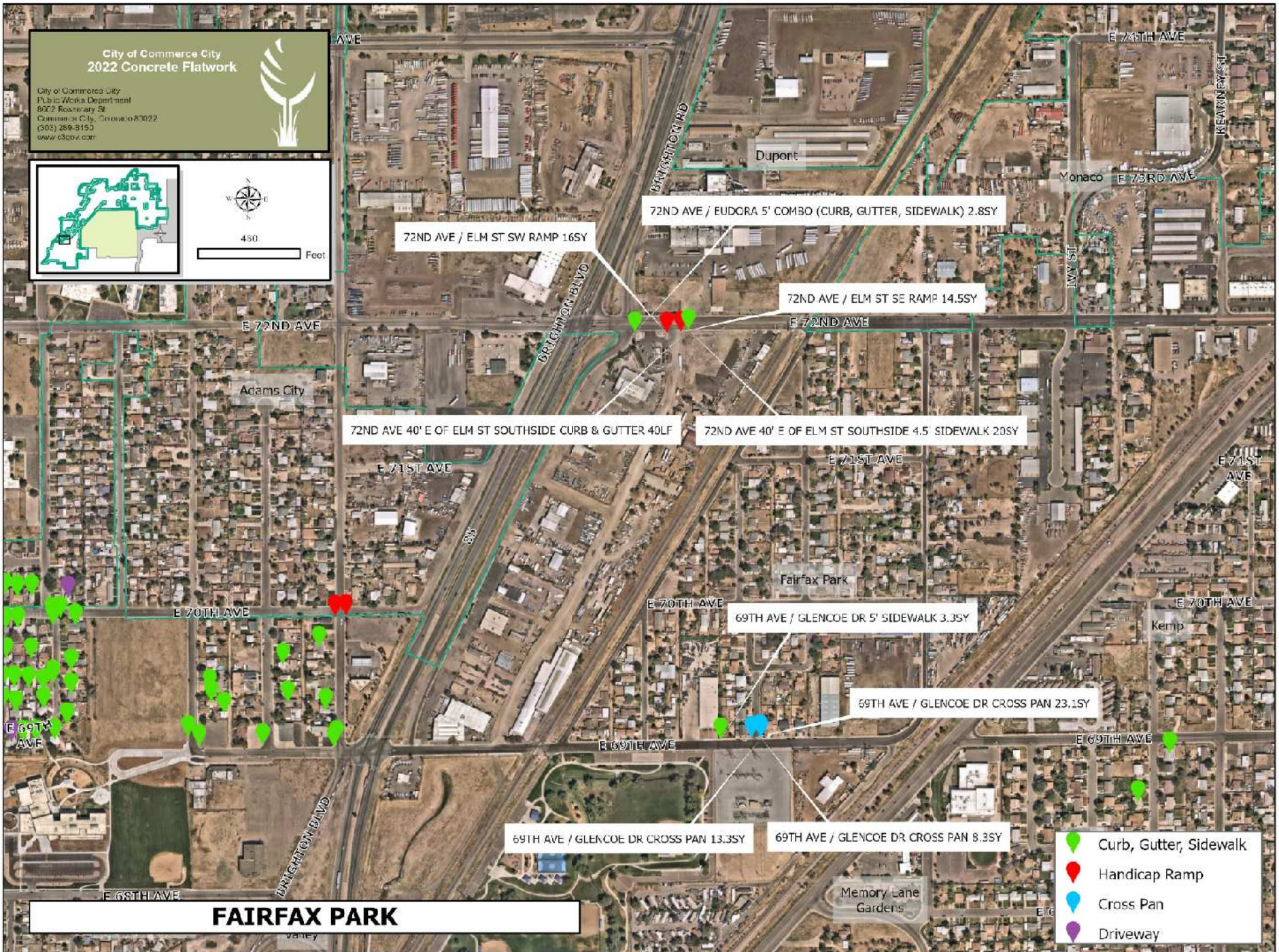
City of Commerce City
2022 Concrete Flatwork



City of Commerce City
Public Works Department
8032 Rossmore St
Commerce City, Colorado 80022
(303) 269-3150
www.c3gov.com



450 Feet



FAIRFAX PARK

Recommendations/Concrete Flatwork

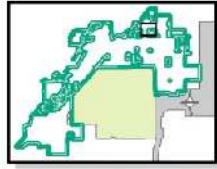
Location	Improvement	Estimated Quantity	Unit (SY) or (LF)	Unit Cost	Estimated Cost	Fund
67th Place / Holly St (CRM)	4' Combo (Curb, Gutter, Sidewalk)	14.7	SY	\$ 108.35	\$ 1,593	Core City Infr Imp
69th Ave / Glencoe Dr NE	Cross Pan	13.3	SY	\$ 122.40	\$ 1,628	Core City Infr Imp
69th Ave / Glencoe Dr NE	Cross Pan	8.3	SY	\$ 122.40	\$ 1,016	Core City Infr Imp
69th Ave / Glencoe Dr NW	Cross Pan	23.1	SY	\$ 122.40	\$ 2,827	Core City Infr Imp
70th Ave / Dahlia St SE	Ramp	9.3	SY	\$ 130.70	\$ 1,216	Core City Infr Imp
70th Ave / Dahlia St SW	Ramp	9.3	SY	\$ 130.70	\$ 1,216	Core City Infr Imp
72nd Ave / Elm St SE	Ramp	14.5	SY	\$ 130.70	\$ 1,895	Core City Infr Imp
72nd Ave / Elm St SW	Ramp	16.0	SY	\$ 130.70	\$ 2,091	Core City Infr Imp
72nd Ave 40' E of Elm St south side	4.5' Sidewalk	20.0	SY	\$ 108.35	\$ 2,167	Core City Infr Imp
69th Ave / Glencoe Dr NE	5' Sidewalk	3.3	SY	\$ 108.35	\$ 358	Core City Infr Imp
67th Place / Holly St (CRM)	Driveway	25.0	SY	\$ 108.35	\$ 2,709	Core City Infr Imp
72nd Ave / Eudora	5' Combo (Curb, Gutter, Sidewalk)	2.8	SY	\$ 108.35	\$ 303	Core City Infr Imp
FAIRFAX / DUPONT TOTAL ESTIMATED COST					\$ 18,913	



City of Commerce City
2022 Concrete Flatwork



City of Commerce City
Public Works Department
8802 Rossmore St
Commerce City, Colorado 80022
(303) 289-9153
www.c3gov.com



480

Feet

16120 119TH AVE (CRM) 4.5' SIDEWALK 55Y



Villages
at Buffalo
Run East

Columbine
Ranches

Buckley
Crossing

VILLAGES AT BUFFALO RUN EAST

Curb, Gutter, Sidewalk

Recommendations/Concrete Flatwork

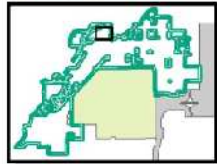
Location	Improvement	Estimated Quantity	Unit (SY) or (LF)	Unit Cost	Estimated Cost	Fund
16120 119th Ave (CRM)	4.5' Sidewalk	5.0	SY	\$ 108.35	\$ 542	Concrete Flatwork
VILLAGES AT BUFFALO RUN TOTAL ESTIMATED COST					\$ 542	



City of Commerce City
2022 Concrete Flatwork



City of Commerce City
Public Works Department
9032 Rossmore St
Commerce City, Colorado 80022
(303) 269-3150
www.c3gov.com



450 Feet

Dunes Park

11574 RIVER RUN PKWY (CRM) 4' COMBO (CURB, GUTTER, SIDEWALK) 13.65Y

Stillwater

E 118TH AVE

E 117TH AVE

E 116TH AVE

E 115TH AVE

E 115TH AVE

River Run

E 116TH AVE

E 114TH AVE

E 114TH AVE

E 113TH AVE

E 113TH AVE

RIVER RUN

112TH AVE

River Oaks

Curb, Gutter, Sidewalk

Di Giorgio

JAMAICA DR

HAWANA ST

115TH PKWY

OAKLAND ST

PEORIA ST

E 112TH AVE

Recommendations/Concrete Flatwork

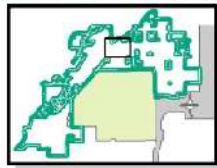
Location	Improvement	Estimated Quantity	Unit (SY) or (LF)	Unit Cost	Estimated Cost	Fund
11574 River Run Pkwy (CRM)	4' Combo (Curb, Gutter, Sidewalk)	13.6	SY	\$ 108.35	\$ 1,474	Concrete Flatwork
RIVER RUN TOTAL ESTIMATED COST					\$ 1,474	



City of Commerce City
2022 Concrete Flatwork



City of Commerce City
Public Works Department
8022 Rossmary St
Commerce City, Colorado 80022
(303) 269-3150
www.c3gov.com



720

Feet

TURNBERRY



- Curb, Gutter, Sidewalk
- Cross Pan

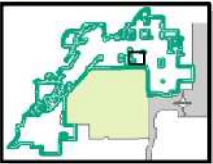
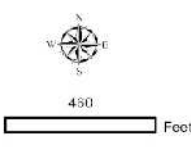
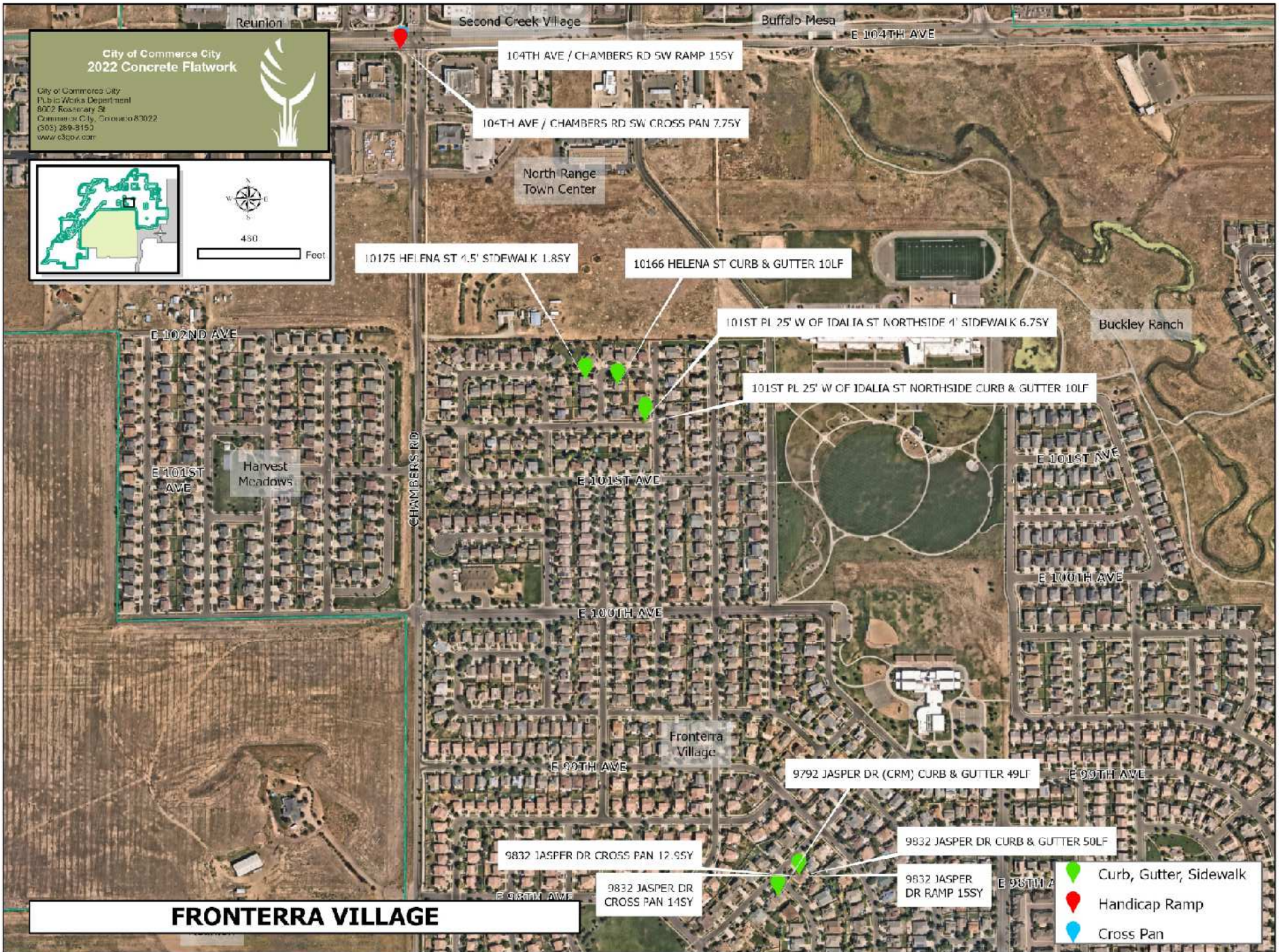
Recommendations/Concrete Flatwork

Location	Improvement	Estimated Quantity	Unit (SY or LF)	Unit Cost	Estimated Cost	Fund
13244 104th Dr (CRM)	Cross Pan	46.0	SY	\$ 122.40	\$ 5,630	Concrete Flatwork
10428 Vaughn St (CRM)	4.5' Sidewalk	5.0	SY	\$ 108.35	\$ 542	Concrete Flatwork
10709 Troy St (CRM)	Curb & Gutter	9.0	SY	\$ 58.15	\$ 523	Concrete Flatwork
12672 104th Dr (CRM)	Curb & Gutter	18.0	LF	\$ 58.15	\$ 1,047	Concrete Flatwork
TURNBERRY TOTAL ESTIMATED COST					\$ 7,742	



**City of Commerce City
2022 Concrete Flatwork**

City of Commerce City
Public Works Department
9032 Rossmore St
Commerce City, Colorado 80022
(303) 269-3150
www.c3gov.com

-  Curb, Gutter, Sidewalk
-  Handicap Ramp
-  Cross Pan

Recommendations/Concrete Flatwork

Location	Improvement	Estimated Quantity	Unit (SY) or (LF)	Unit Cost	Estimated Cost	Fund
104th Ave / Chambers Rd SW	Cross Pan	7.7	SY	\$ 122.40	\$ 942	Concrete Flatwork
101st Pl 25' W of Idalia St north side	4' Sidewalk	6.7	SY	\$ 108.35	\$ 726	Concrete Flatwork
10175 Helena St	4.5' Sidewalk	1.8	SY	\$ 108.35	\$ 195	Concrete Flatwork
9832 Jasper Dr	Cross Pan	12.9	SY	\$ 122.40	\$ 1,579	Concrete Flatwork
9832 Jasper Dr	Cross Pan	14.0	SY	\$ 122.40	\$ 1,714	Concrete Flatwork
10166 Helena St	Curb & Gutter	10.0	LF	\$ 58.15	\$ 582	Concrete Flatwork
101st Pl 25' W of Idalia St north side	Curb & Gutter	10.0	LF	\$ 58.15	\$ 582	Concrete Flatwork
9792 Jasper Dr (CRM)	Curb & Gutter	49.0	LF	\$ 58.15	\$ 2,849	Concrete Flatwork
9832 Jasper Dr	Curb & Gutter	50.0	LF	\$ 58.15	\$ 2,908	Concrete Flatwork
104th Ave / Chambers Rd SW	Ramp	15.0	SY	\$ 130.70	\$ 1,961	Concrete Flatwork
9832 Jasper Dr	Ramp	15.0	SY	\$ 130.70	\$ 1,961	Concrete Flatwork
104 th Ave West Bound SW Corner of Chambers	Remove & Replace Concrete Panels	68	SY	\$ 161.00	\$10,948	Concrete Flatwork
FRONTERRA VILLAGE TOTAL ESTIMATED COST					\$ 26,945	

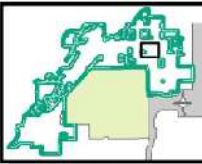
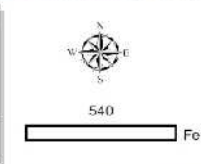


S 109TH AVE

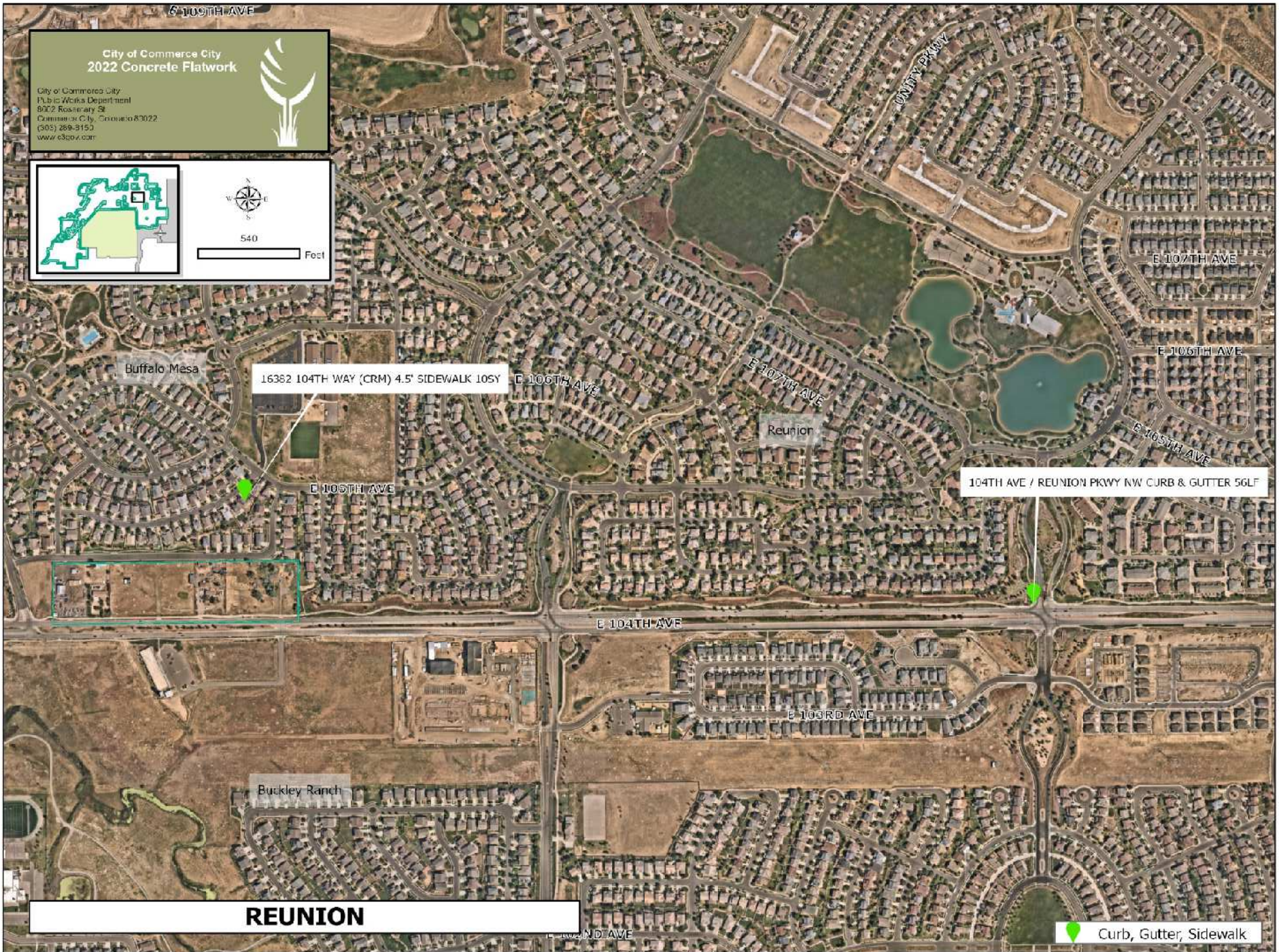
**City of Commerce City
2022 Concrete Flatwork**



City of Commerce City
Public Works Department
9022 Rossmore St
Commerce City, Colorado 80022
(303) 269-3150
www.c3gov.com

540 Feet



REUNION

 Curb, Gutter, Sidewalk

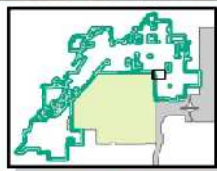
Recommendations/Concrete Flatwork

Location	Improvement	Estimated Quantity	Unit (SY) or (LF)	Unit Cost	Estimated Cost	Fund
16382 104th Way (CRM)	4.5' Sidewalk	10.0	SY	\$ 108.35	\$ 1,084	Concrete Flatwork
104th Ave / Reunion Pkwy NW	Curb & Gutter	56.0	LF	\$ 58.15	\$ 3,256	Concrete Flatwork
104th Ave West Bound 300' West of Walden CL	Remove & Replace Concrete Panels	17.0	SY	\$ 161.00	\$ 2,737	Concrete Flatwork
300' West of Tower Right Lane	Remove & Replace Concrete Panels	32.0	SY	\$ 161.00	\$ 5,152	Concrete Flatwork
REUNION TOTAL ESTIMATED COST					\$ 12,229	



City of Commerce City
2022 Concrete Flatwork

City of Commerce City
Public Works Department
8002 Rosary St
Commerce City, Colorado 80022
(303) 289-3152
www.c3gov.com



540 Feet

Reunion

Prairie Farms

E 96TH AVE

E 96TH AVE

E 95TH AVE

E 95TH AVE

QUINTERO ST (CRM) CURB & GUTTER 18LF

BUCKLEY RD

Second
Creek
Farms

E 94TH AVE

Buffalo
Highlands

9295 QUINTERO ST (CRM) CURB & GUTTER 9LF

E 93RD AVE

E 92ND AVE

BUFFALO HIGHLANDS

 Curb, Gutter, Sidewalk

Recommendations/Concrete Flatwork

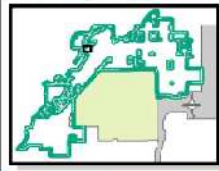
Location	Improvement	Estimated Quantity	Unit (SY) or (LF)	Unit Cost	Estimated Cost	Fund
9295 Quintero St (CRM)	Curb & Gutter	9.0	LF	\$ 58.15	\$ 523	Concrete Flatwork
Quintero St (CRM)	Curb & Gutter	18.0	LF	\$ 58.15	\$ 1,047	Concrete Flatwork
BUFFALO HIGHLANDS TOTAL ESTIMATED COST					\$ 1,570	



City of Commerce City
2022 Concrete Flatwork



City of Commerce City
Public Works Department
9022 Rossmore St
Commerce City, Colorado 80022
(303) 269-3150
www.c3gov.com



220

Feet

9216 107TH AVE (CRM) 4' SIDEWALK 16.9SY

9230 107TH PL (CRM) 4.5' SIDEWALK 5SY

Belle Creek

106TH AVE / BELLE CREEK (CRM) CURB & GUTTER 18LF

Di Giorgio

BELLE CREEK

 Curb, Gutter, Sidewalk

Recommendations/Concrete Flatwork

Location	Improvement	Estimated Quantity	Unit (SY) or (LF)	Unit Cost	Estimated Cost	Fund
106th Ave / Belle Creek (CRM)	Curb & Gutter	18.0	LF	\$ 58.15	\$ 1,047	Concrete Flatwork
9216 107th Ave (CRM)	4' Sidewalk	16.9	SY	\$ 108.35	\$ 1,831.12	Concrete Flatwork
9230 107th Pl (CRM)	4.5' Sidewalk	5.0	SY	\$ 108.35	\$ 541.75	Concrete Flatwork
BELLE CREEK TOTAL ESTIMATED COST					\$ 3,420	





SIDEWALK CONNECTIVITY

70th Avenue

Add Sidewalk

CONNECT SIDEWALK
ALONG WEST SIDE
OF PEORIA

Add Sidewalk

Recommendations/Concrete Flatwork

Location	Improvement	Estimated Quantity	Unit (SY or (LF)	Unit Cost	Estimate Cost	Fund
70th Aven - between Birch and Dahlia	Missing Sidewalks	400	LF	\$185.00	\$ 74,000	Sidewalk Connectivity
SIDEWALK CONNECTIVITY FUND					\$74,000	



Commerce
CITY

Total Concrete Flatwork

Improvement Area	Estimate Cost (\$)
Core City	\$ 72,524
Adams City	\$ 115,902
Derby	\$ 26,717
Quebec Parkway	\$ 56,443
Fairfax / Dupont	\$ 18,913
Belle Creek	\$ 3,420
Buffalo Highlands	\$ 1,570
Fronterra Village	\$ 26,945
Turnberry	\$ 7,742
Villages at Buffalo Run East	\$ 542
River Run	\$ 1,474
Reunion	\$ 12,229
Sidewalk Connectivity	\$ 74,000
Estimated Cost	\$ 418,411
Contingency 20%	\$ 83,682
Total estimated costs	\$502,092



Commerce
CITY

Funding

Improvement Type	Estimate Cost (\$)
Concrete Flatwork	\$216,444
Core City Infrastructure	\$127,966
Missing Sidewalk	\$74,000
Estimated Cost	\$418,411
20% Contingency	\$83,682
Total Estimated Costs	\$502,092

Available Funding Sources

- 2022 Concrete Flatwork Budget \$ 250,000
- 2022 Sidewalk Connectivity Budget \$ 96,000
- 2022 Core City Infrastructure \$ 164,238
- Total Budget \$ 510,238

- Note: Core City Infrastructure Budget is \$250,000. We are proposing to use \$165K in Concrete Flatwork and \$85K in Pavement Management



Next Steps

- Advertise a request for bid for concrete flatwork program.
- Bring contract to City Council in May 2022
- Begin Work June 2022



Questions?

