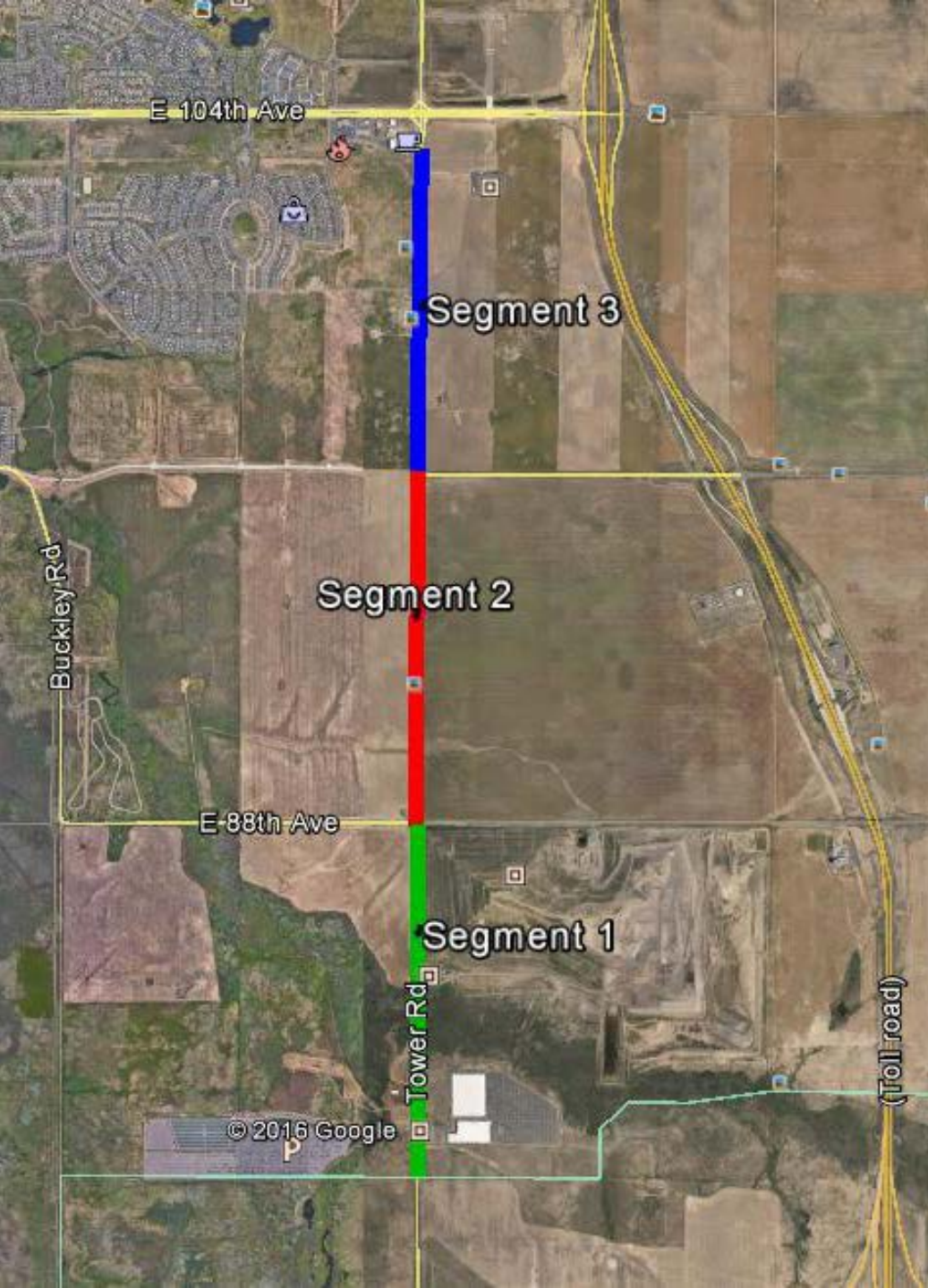




Tower Road Widening Project – Phasing & Temporary Access along Buckley Road

June 27, 2016



Tower Road Widening – Phases/Segments



Background

- Construction plans assumed a construction phasing plan that would build the east half of the road initially, for the entire 3-mile length, followed by the west side of the road
- Traffic would be restricted to one, narrow lane in each direction
- Republic Services has asked that Buckley Road & 88th Avenue be re-opened to vehicle traffic, during construction, to allow easier access to the landfill entrance
- Contractor has proposed building Tower Road in 3 phases or segments

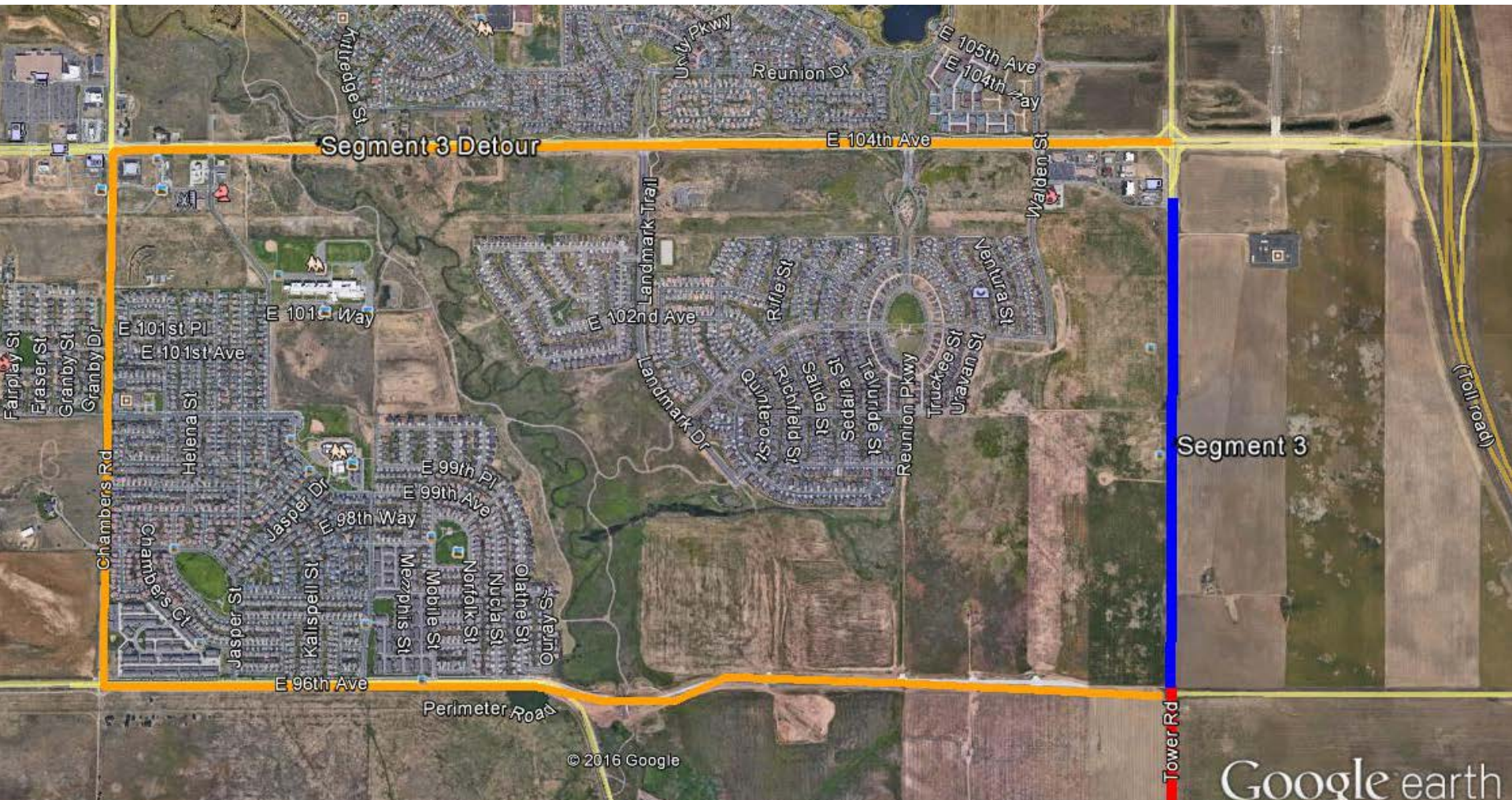


Construction Phasing Request

- Contractor has proposed building Tower Road in 3 phases or segments – beginning with Segment 3
- This would entail full closure of Tower Road to traffic
- Access to businesses at 104th & Tower would remain the same, including full access at 103rd Avenue
- Traffic would be detoured along Chambers Road and 96th Avenue
- Total closure of 4-5 months



Segment 3 Detour



Segment 3 Detour - Pros & Cons

Pros:

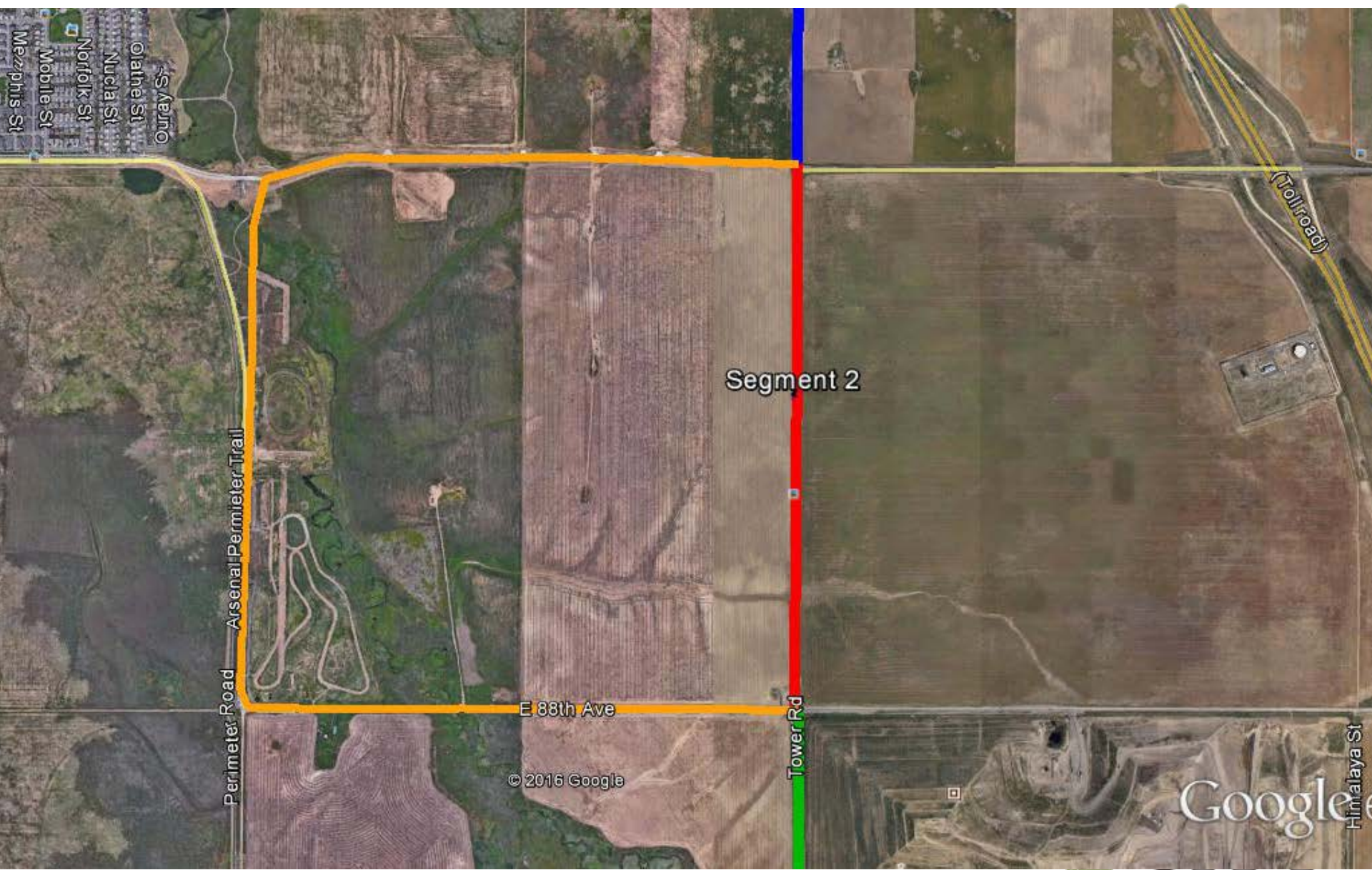
- Improved safety
 - for workers & vehicles due to deep excavations adjacent to roadway
 - By eliminating driving through potential standing water
- Improved quality
 - Completing work, especially utility work, in complete sections to avoid differential settlement
- Expedited construction period
 - All paving completed in Segment 3 by mid-November 2016
 - Eliminates the risk of paving Segment 3 in winter

Cons:

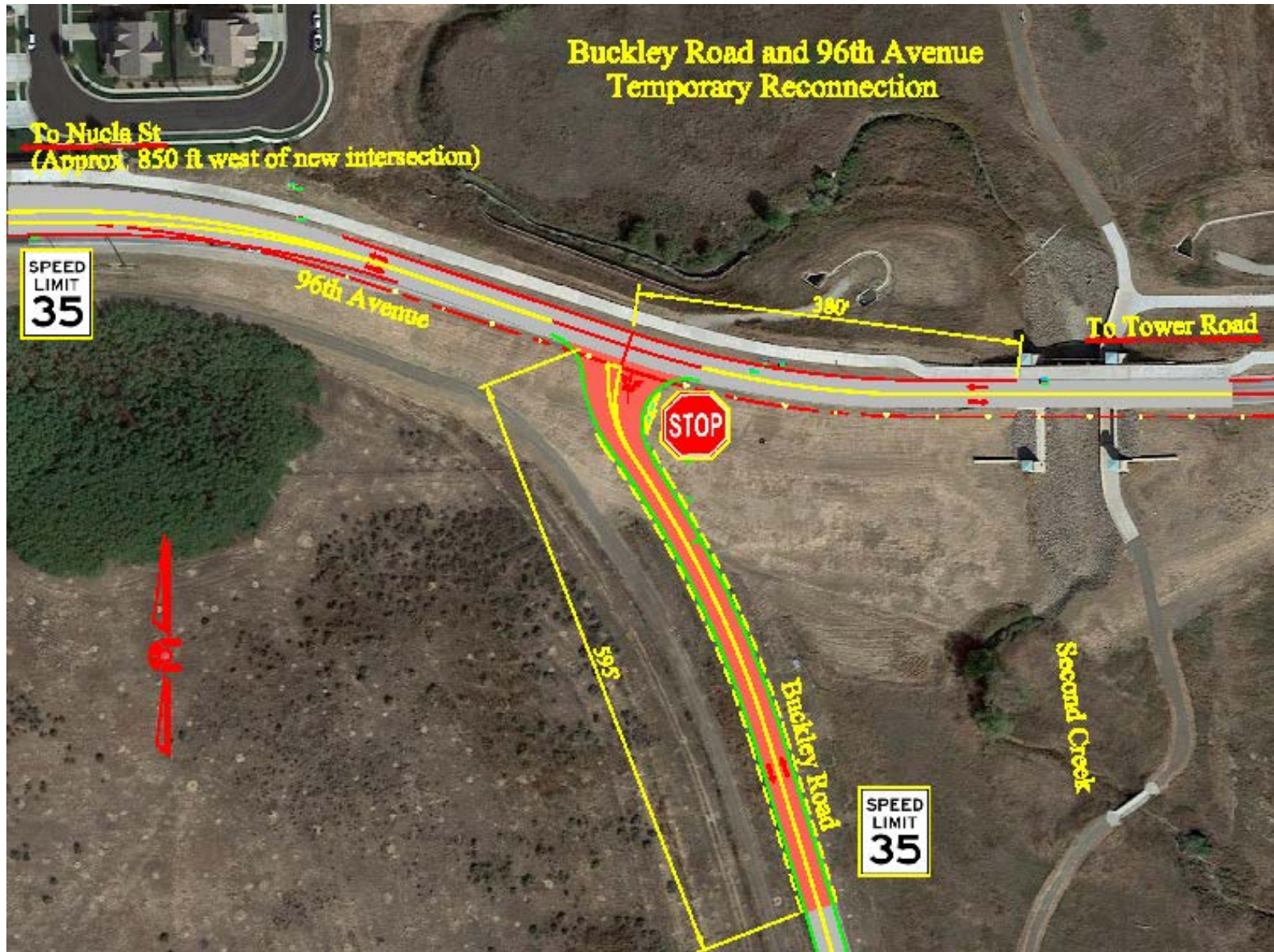
- Increased traffic near residences
 - Approximately 13K vehicles travel on Tower in this segment; many would be detoured to Chambers Road & 96th Ave
- Decreased traffic near businesses
 - Fewer vehicles traveling along 104th Ave. & Tower Road might result in fewer pass-by stops at area businesses



Segment 2 Detour (Tentative)



Proposed Connection at 96th Ave.



Segment 2 Detour - Pros & Cons

Pros:

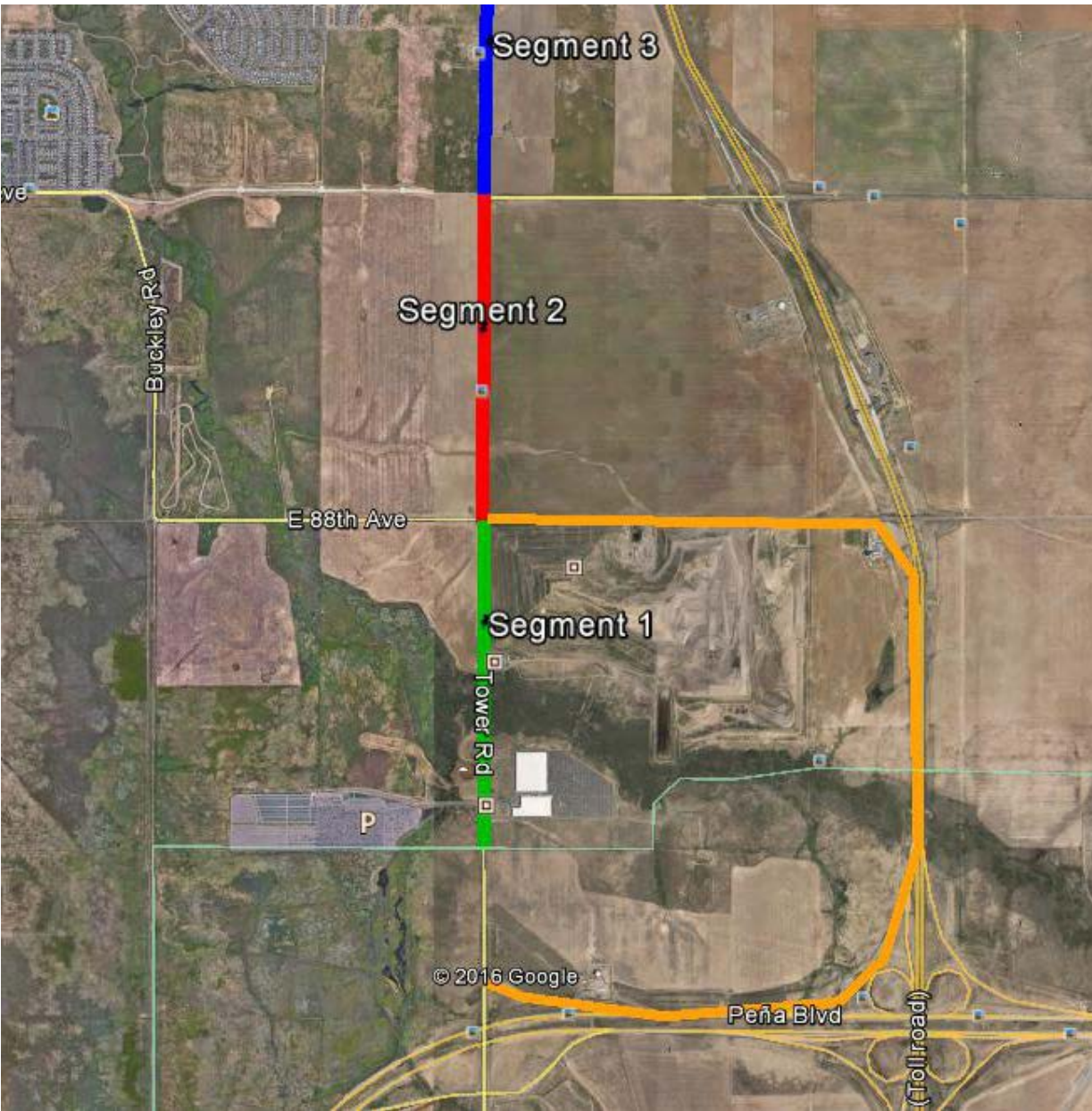
- Improved safety
- Improved quality
- Expedited construction period
- Interim connection on Buckley Road for trash trucks & other vehicles

Cons:

- Increased traffic near residences on 96th Ave.



Segment 1 Detour (Tentative)



Policy Questions

- Is there a desire to close down Tower Road to construct Segment 3?
- Is there a desire to re-open Buckley Road & 88th Avenue as a detour/bypass for trash trucks and/or vehicular traffic?





Discussion

A horizontal dotted line extends from the left edge of the slide, starting below the 'Discussion' header. It features two solid dark dots: one positioned approximately one-third of the way across the slide, and another positioned approximately two-thirds of the way across the slide.