

STATE-OF-THE-ART MATERIALS RECOVERY FACILITY

Barrett Jensen, Government Affairs Manager

Waste Connections of Colorado Inc.

4150 E. 60th Avenue
Commerce City, CO





WASTE CONNECTIONS INC.

- ▶ Operating in 44 states and 6 provinces in Canada
- ▶ Own and/or Operate over 70 recycling facilities across North America
- ▶ Deployed over 50 AI units across company
- ▶ Nearly 23,000 team members across North America
- ▶ 800 employees are Coloradans
- ▶ Currently employ over 70 people in Commerce City and over 200 in Adams County
- ▶ Serve millions of residents, spanning from communities from Pueblo, to Fort Collins, all the way to the Western Slope



WASTE CONNECTIONS
Connect with the Future®



2022
SUSTAINABILITY
REPORT



OUR CARBON OFFSETS FROM SERVICES PROVIDED: Achieving our Targets

We generate carbon offsets through the services that we provide, including recycling and biogas recovery. Therefore, our fifteen-year target to increase carbon offsets, excluding sequestration, by 50% is linked to achievement of our recycling and biogas recovery targets. Given our growing pipeline of these projects under development, we are well positioned to achieve our recycling, biogas recovery and carbon offset targets.



RECYCLING

RESOURCE RECOVERY: RECYCLING

At Waste Connections, resource recovery is a key element of sustainability and includes recycling through our material recovery facilities (MRFs). An integral part of our service offerings, we recycle or divert over 50% of our collected waste volumes in many markets, in some cases over 70%. We continue to expand these efforts through the acquisition of state-of-the-art facilities, the development of new "next generation" facilities and the enhancement of operating capabilities at our existing MRFs through technology additions, including robotics and optical sorters.



71
Recycling facilities that process post-consumer materials, supporting our customers

2M
Tons of fibers, metals and plastics processed in 2021

~50
Recycling robots deployed across our footprint, the largest in the industry



WASTE CONNECTIONS INC. AND SUSTAINABILITY



STATE-OF-THE- ART MATERIALS RECOVERY FACILITY

- Is a recycling facility for the processing and transportation of single-stream recycling for Commerce City and surrounding communities in Colorado
- Requesting approval of Conditional Use Permit in order to continue to invest in nation and industry-leading project in Commerce City

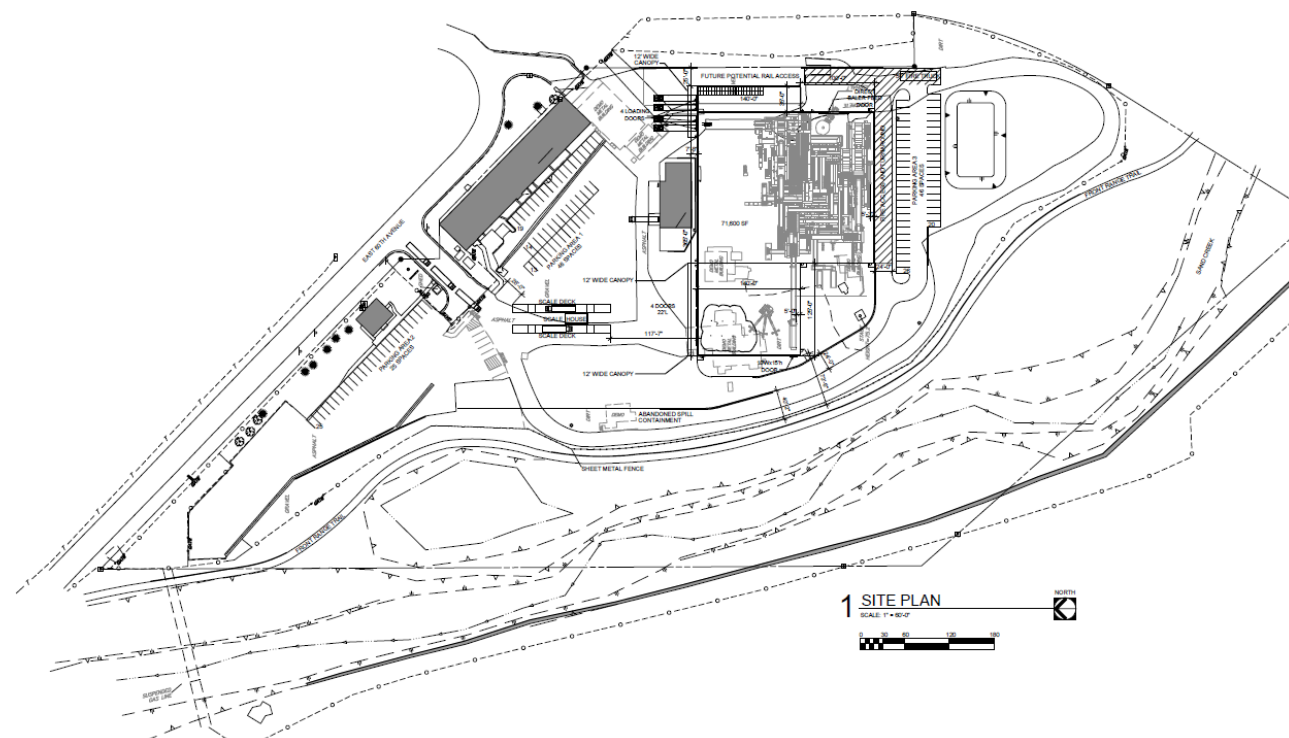


SITE SELECTION

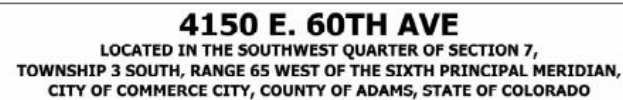
- Proximal to Front Range waste shed
- Green industrial project to elevate industrial uses in Commerce City
- Future access to rail and interstate transportation to recycling markets
- Optimal use of derelict brownfield site to increase City image and become a nation-recognized green city



SITE AS OF TODAY

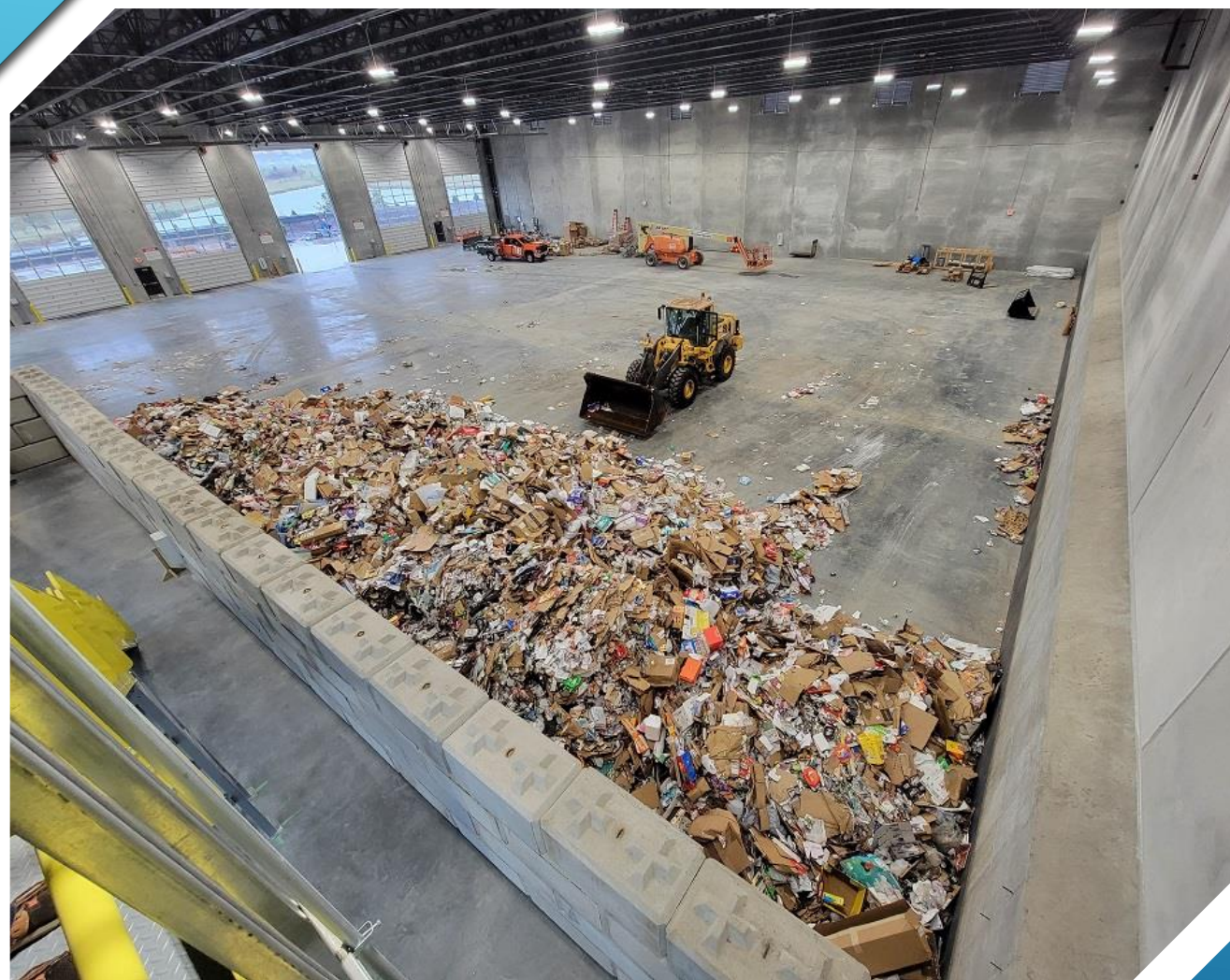


SITE PLAN



ELEVATIONS

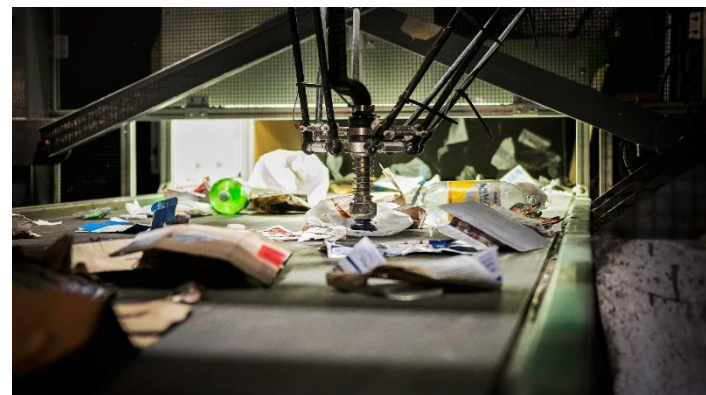
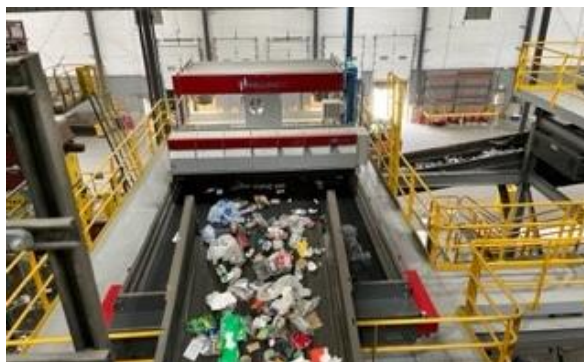
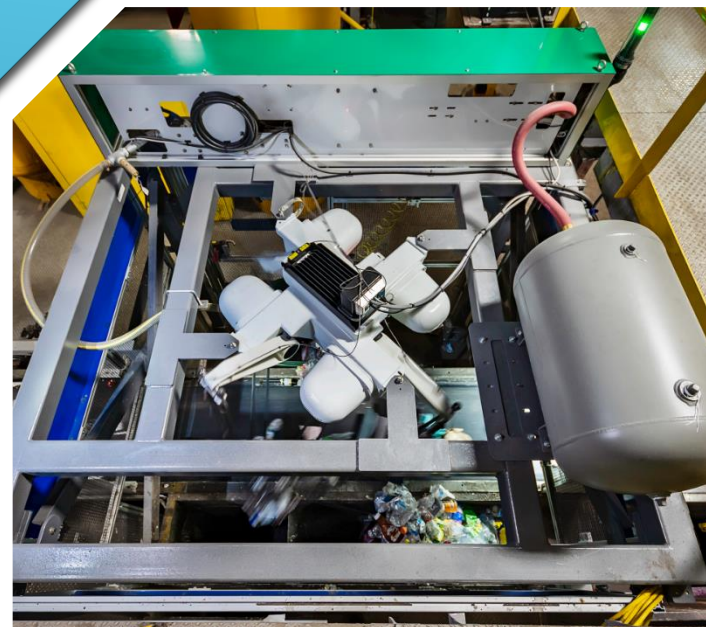




TIPPING FLOOR



EQUIPMENT



TECHNOLOGY



WASTE CONNECTIONS SAFETY



- Safety is the #1 core value of the company
- Industry-leading safety results
- Waste Connections culture of safety is based upon the principle that our people are our greatest asset
- Self-directed, empowered employees are key to our safety results

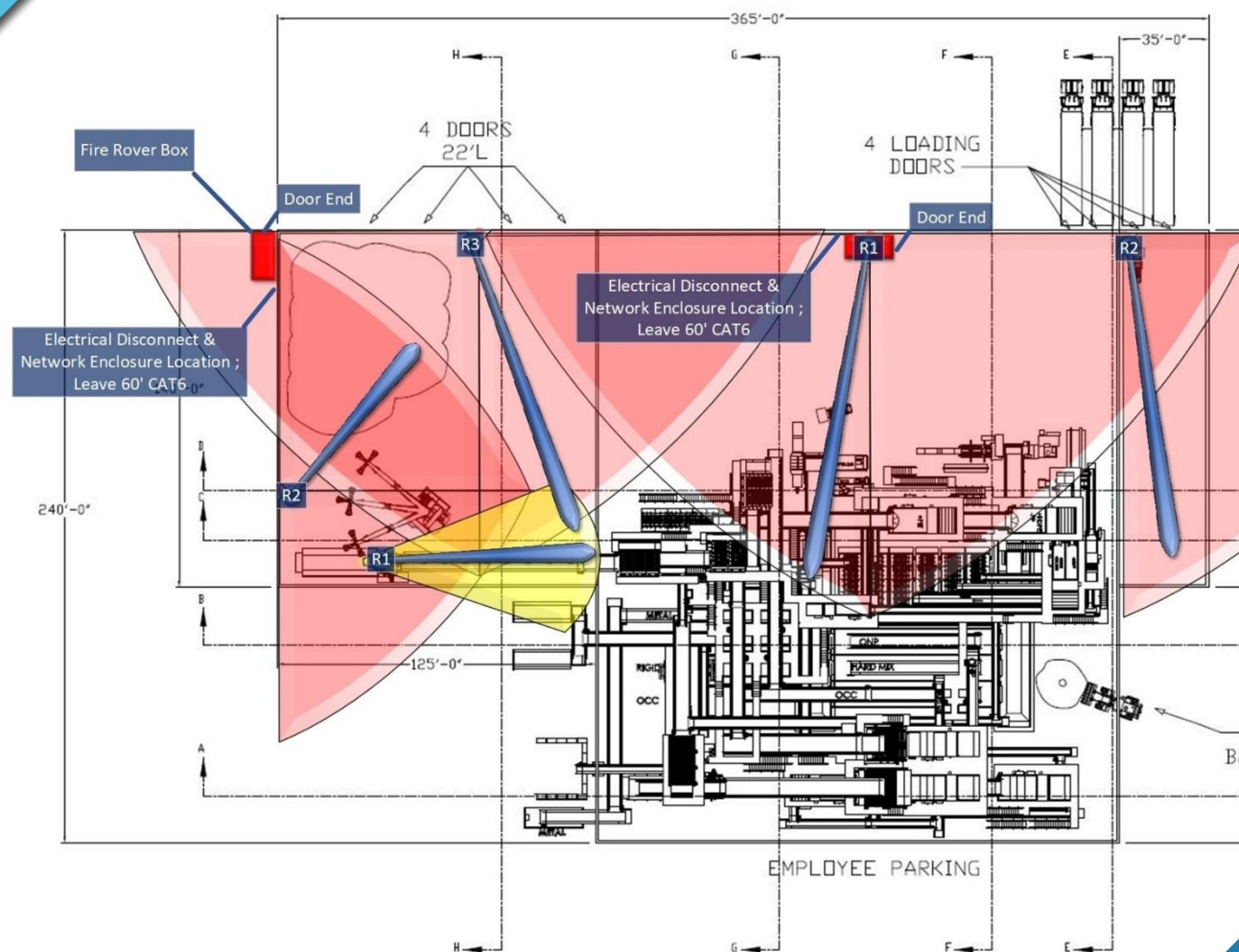


Safety Features:

1. Fire walls
2. Fire Rover monitoring and extinguishing system
3. Dust Extraction System
4. Auger Screens before sorters to split material flow and prevent injuries
5. Remote MRF Control (on-site)
6. Sort Enclosures to protect sorters from the elements



SAFETY FEATURES



STATE-OF-THE-ART FIRE SUPPRESSION SYSTEM



TRAFFIC ASSESSMENT

- Traffic Study concluded minimal impact to surrounding area, to include intersection at 60th and Vasquez
- Customer and employees account for 452 vehicles per day
- Vehicles are spread throughout operating hours



ENVIRONMENTAL ANALYSIS

- Updated environmental impact assessment conducted. Public Health Department issued positive response letter
 - Multiple phase one and two assessments conducted over multiple uses of site
 - Installation of methane monitoring detectors in building for proactive monitoring
 - Creation of Materials Handling Plan to ensure proactive handling of materials during construction

OPERATIONS HIGHLIGHTS

- ▶ Facility will have full time site manager responsible for proper characterization and disposal of incoming material
- ▶ Haulers and personnel with Waste Connections trained on recognition of unacceptable materials upon hire and on annual basis
- ▶ All operations conducted indoors per set conditions
- ▶ At full capacity, facility will employ approximately 60 Waste Connections FTE's
- ▶ Facility operating hours: 6:00 am – 10 pm
- ▶ Office staff hours: 7:00 am – 6:00 pm



Facility will add 90+ jobs, 60 Waste Connections direct employees and 30 indirect jobs created, with earnings of up to \$125,000 annually



Create beneficial use to previously abandoned and blighted brownfield property, enhancing Commerce City image



Sophisticated Mechanical Sorting Systems including Robotics, and A.I. improves processing speed and material quality delivering higher recycled product quality



One of the largest investments in clean and modern industrial Infrastructure in Colorado and Commerce City. Total capital invested in facility will be nearly \$44 million. Recyclable Material Processing Technology alone will cost \$22 million

ECONOMIC BENEFITS



Expand recycling and increase waste diversion efforts across Colorado and driving carbon footprint reductions



Sophisticated Mechanical Sorting Systems utilizing the most advanced A.I. and improves processing speed and material quality delivering higher recycled product quality. Facility will be able to handle 240 million lbs. of recycling annually once fully complete



As part of project, planting 560 new trees, shrubs, and ornamental grasses



All material unloading, processing, and re-loading activities will be conducted in an enclosed building preventing any potential nuisance issues

ENVIRONMENTAL BENEFITS



Commerce City will be recognized as advocates of innovation in waste diversion technologies and demonstrating leadership toward a more sustainable future



Proven support and partnership with Commerce City and the private sector to promote waste diversion and sustainability



Commerce City will attract more green businesses through support of a green project such as this



As State of Colorado begins to invest more and more into waste diversion and green projects in Colorado, Commerce City will be seen as a leader that the State can rely on for infrastructure and end markets to contribute to waste diversion and reduction

COMMERCE CITY BENEFITS

CONCLUSION



- REQUESTING APPROVAL OF CONDITIONAL USE PERMIT
- NATION-LEADING, STATE-OF-THE-ART RECYCLING FACILITY
- OPPORTUNITY FOR COMMERCE CITY TO BE ON LEADING EDGE OF RECYCLING TECHNOLOGY THROUGH A PARTNERSHIP WITH THE PRIVATE SECTOR TO INCREASE WASTE DIVERSION IN THE STATE

WASTE CONNECTIONS OF COLORADO

Connect with the Future®

QUESTIONS?



WASTE CONNECTIONS OF COLORADO
Connect with the Future®

SUPPORTING SLIDES

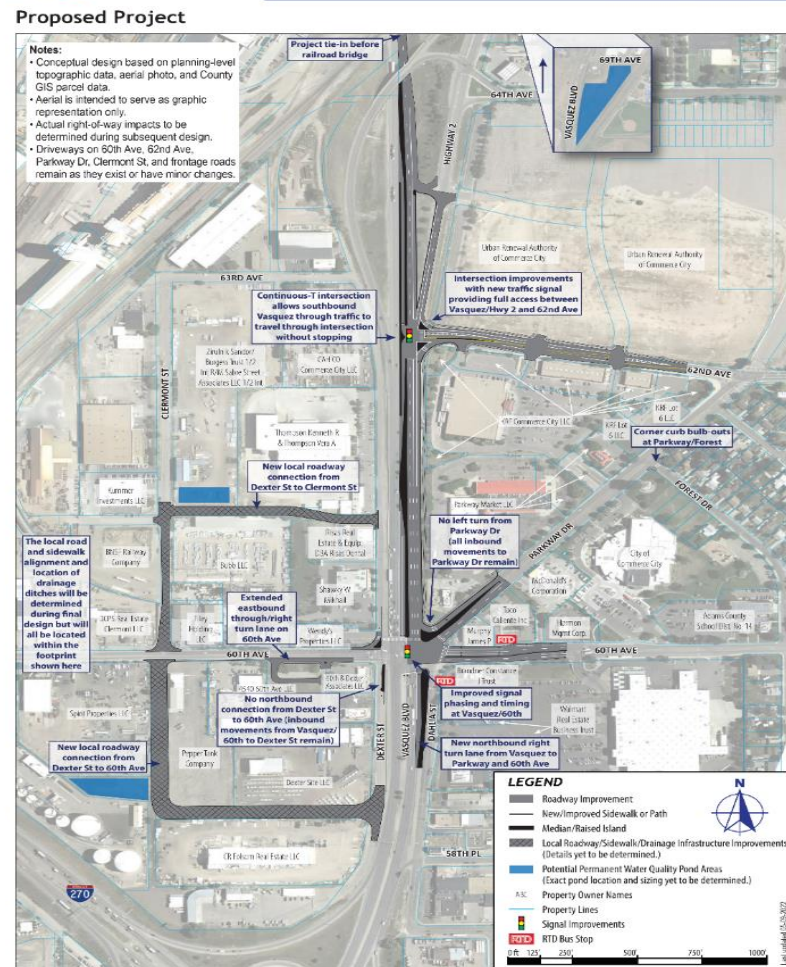


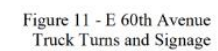
WASTE CONNECTIONS OF COLORADO
Connect with the Future®



Vasquez Boulevard
I-270 to 64th Avenue NEPA and Design

Construction planned to start in
2024



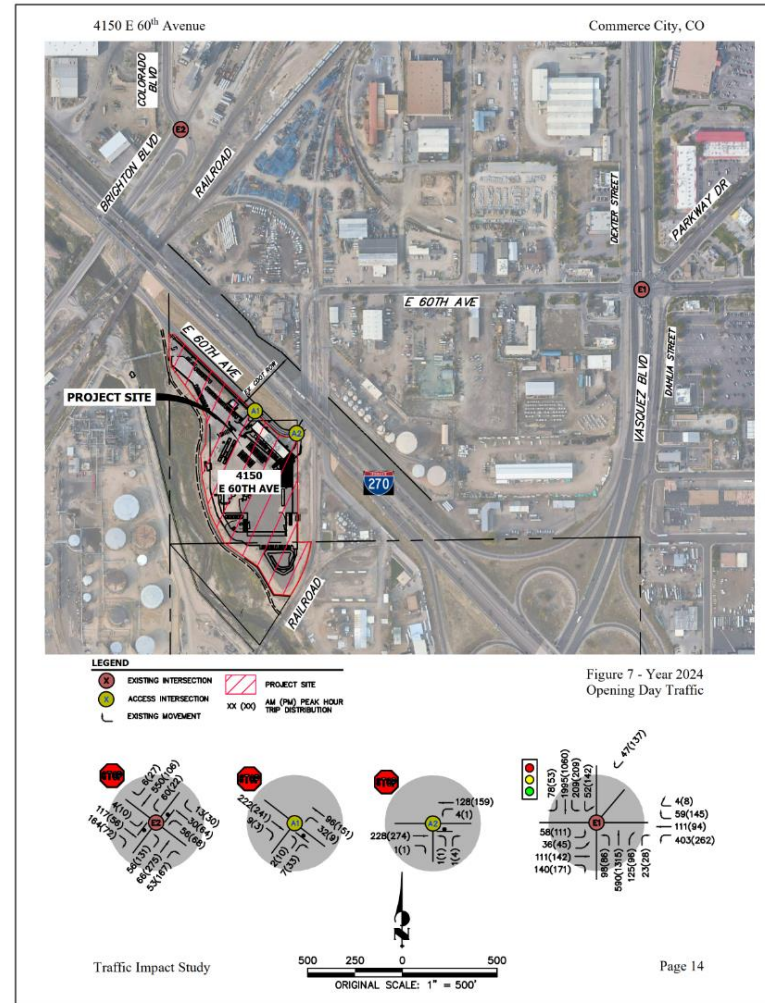




2024 Opening Day Traffic

Average Annual Daily Traffic

Location	2020 AADT (Source)
Vasquez Blvd south of E 60 th Ave	42,000 (CDOT OTIS)
Vasquez Blvd north of E 60 th Ave	36,000 (CDOT OTIS)
E 60 th Ave near the Project Site	4,350 (tube count)





All of the following criteria are met:

- ☒ (i) Proposed use will not result in a substantial or undue adverse effect on adjacent property, the character of the neighborhood, traffic conditions, parking, public improvements;
- ☒ (ii) Any adverse effect has been or will be mitigated to the maximum extent feasible, including but not limited to sufficient landscaping and screening to ensure harmony for adjoining uses;
- ☒ (iii) Characteristics of the site are suitable for the proposed use considering size, shape, location, topography, existence of improvements, and natural features;
- ☒ (iv) Proposed use will be adequately served by, and will not impose an undue burden on, any of the existing improvements, facilities, and services of the city or its residents;
- ☒ (v) Applicant has provided adequate assurances of continuing maintenance;
- ☒ (vi) No evidence to suggest the use violates any federal, state, or local requirements;

One of the following criteria is met (this project meets both):

- ☒ (i) Community need for the proposed use at the proposed location, given existing and proposed uses of a similar nature in the area and of the need to provide and maintain a proper mix of uses both within the city and the immediate area of the proposed use; or
- ☒ (ii) The use complies with the general purposes, goals, objectives, policies, and standards of the comprehensive plan and all other plans or programs adopted by the city

APPROVAL CRITERIA – CONDITIONAL USE PERMIT (CUP) COMMERCE CITY LAND DEVELOPMENT CODE SEC. 21- 3230(3)