

# Spirit Environmental, LLC On-Call Environmental Consulting RFP Response Presentation

---

## Presenters:

Conor Merrigan, Spirit Environmental  
Katrina Winborn-Miller, ARS  
Jane Clary, Wright Water Engineers

## Additional Staff:

Tony Barlage, Keegan Conley, Spirit  
Environmental  
Howard Gebhart, ARS

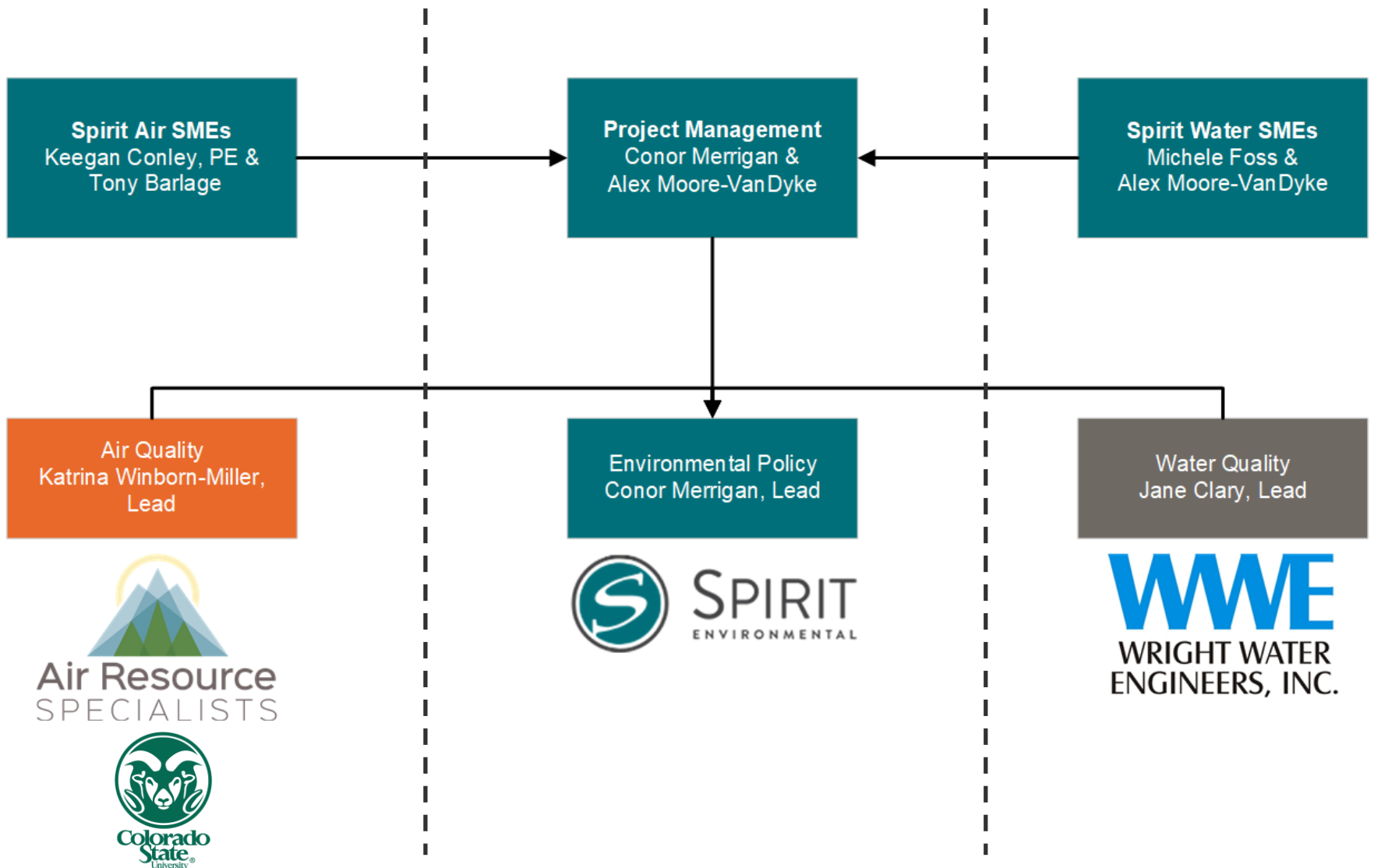


**SPIRIT**  
ENVIRONMENTAL

# — Presentation Agenda

- Introduction to Team
- Scope of Services Review
- Public Engagement
- Costing Approach and Ranges
- Question & Answer from Commerce City

# Introduction to Team



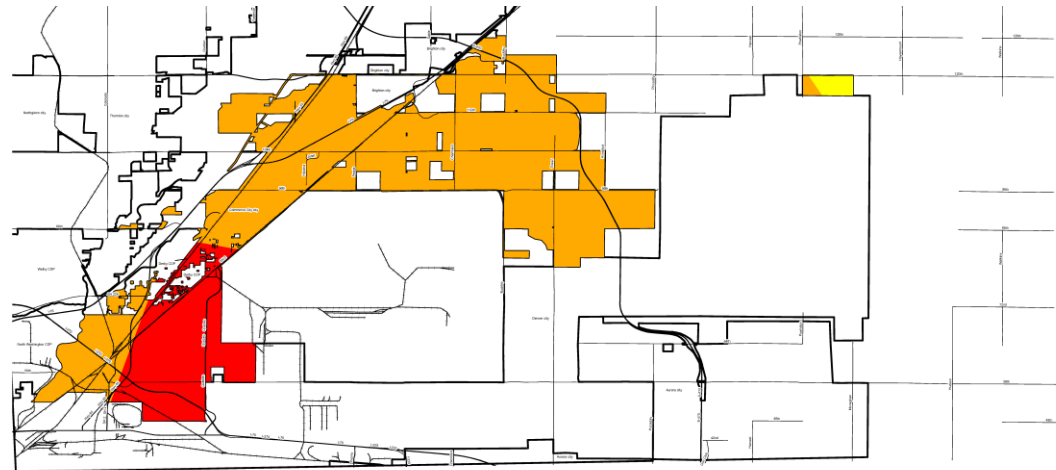


# Spirit Environmental Approach Overview



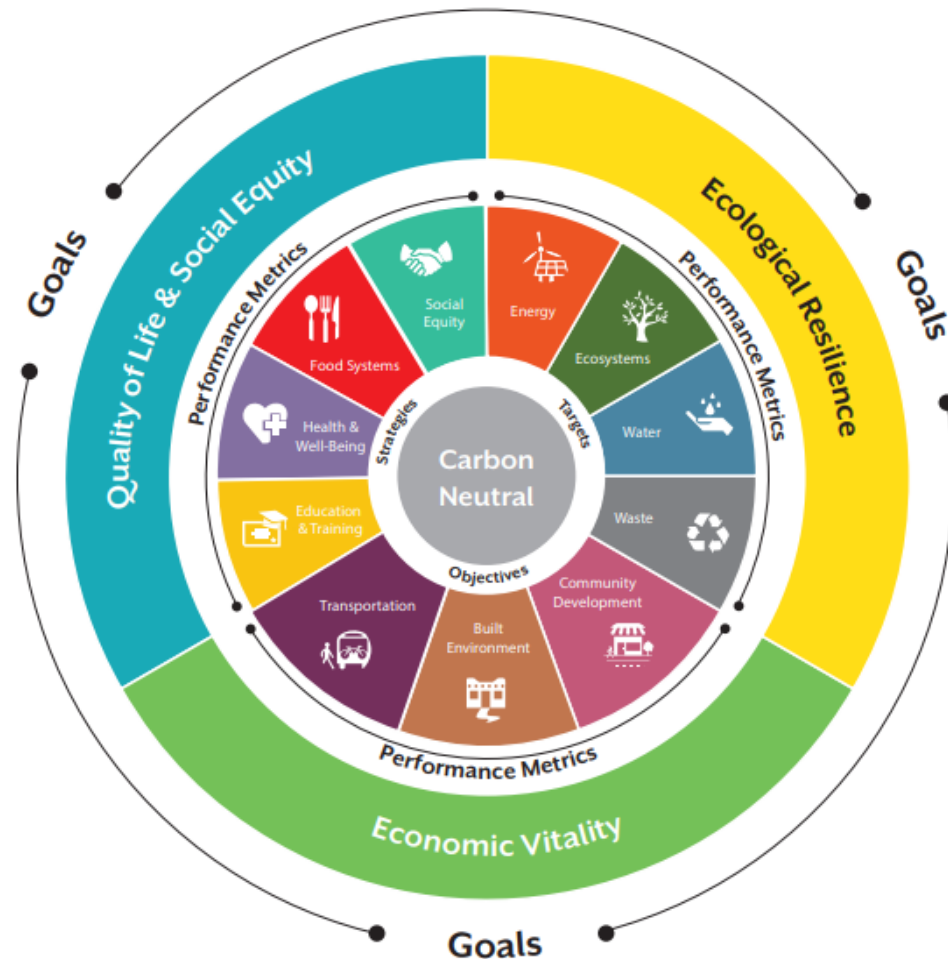
# Environmental Policy Development

- Ambitiously practical & implementation focused
- Integration of best practice, Commerce City processes, and data
  - Environmental indicators, frameworks and success metrics
  - Comprehensive plan and regulatory recommendations
- Green building, resource efficiency, and renewables
  - Community wide, city operations
- Environmental management, land use integration and review framework
  - Brownfields
  - Hazard mitigation
  - Soil management



# Environmental Policy Development

- Project Example: City of Santa Fe Sustainability Plan



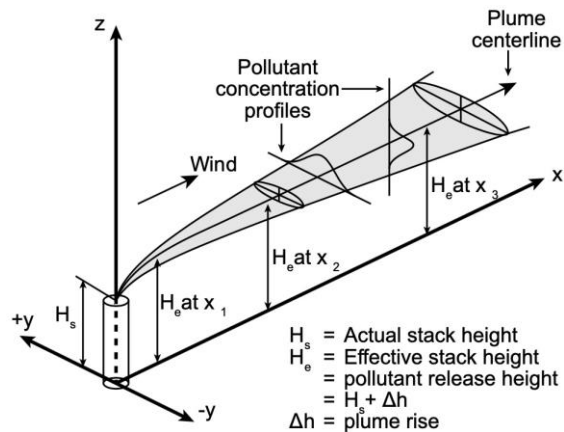
# Air Quality Monitoring and Policy Recommendations

- Technical expertise & regulatory support as it pertains to local air quality regs.
  - Air quality plan review – sampling/monitoring studies, adherence to BMPs
  - Oil and Gas Industry experience
- Assessment of air pollution risks & policy recommendations
  - Inventory of air quality impacts, possible air quality monitoring program
  - GHG inventory, HAPs inventory, emission reduction strategies
  - Significance thresholds, screening threshold development
  - Air quality modeling guidelines



# Air Quality Monitoring and Policy Recommendations

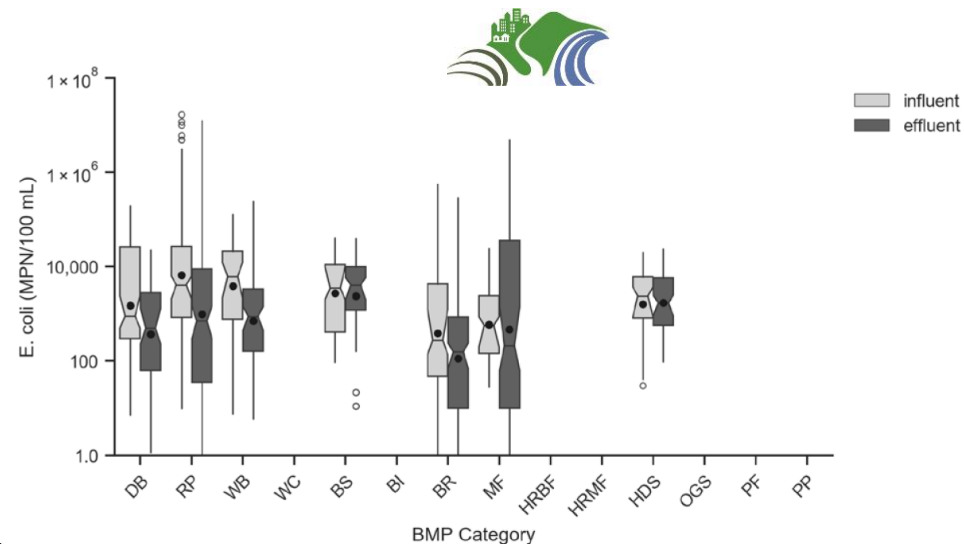
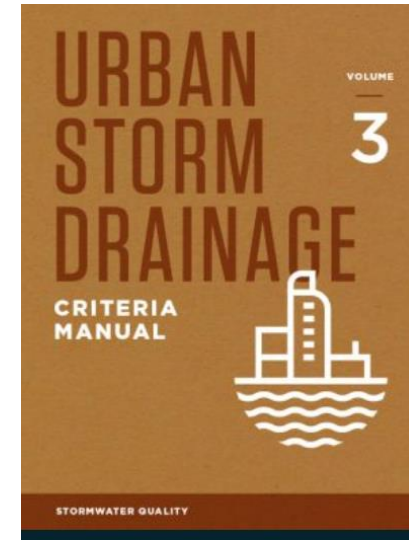
- **Project example:** Pinal County, AZ – Air Quality Permit/Modeling Application Reviews
  - Assist county with technical review of permit applications
  - Help ensure modeling plans meet county guidelines & follow acceptable technical procedures
  - Review completed modeling submittals – reports & digital modeling files





# Water Quality Monitoring and Policy Recommendations

- Development of LID stormwater infrastructure guidelines and BMPs
- Water quality and habitat policy recommendations; review of land development code
- Point source and non-point source pollution causes, groundwater quality assessment, policy recommendations and remediation strategies



# Water Quality Monitoring and Policy Recommendations

- Water quality management recommendations for First, Second, and Third Creek
- Potential future capital investments, green infrastructure projects, or other water quality efforts
- Development of a water quality monitoring plan

## Colorado Department of Public Health and Environment Action Plan for Toxic Firefighting Foam and Related Chemicals

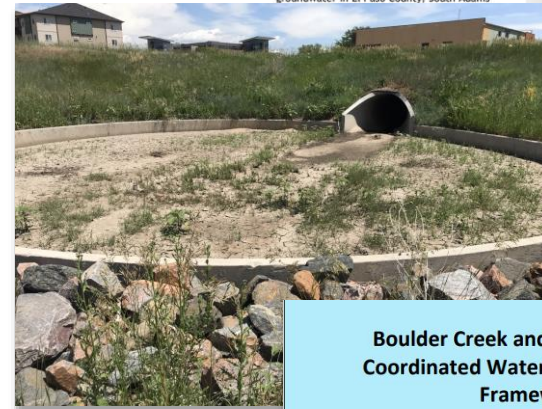


### What is this Action Plan?

The Colorado Department of Public Health and Environment action plan summarizes how the department will protect Coloradans from risks posed by a family of PFAS chemicals (scientifically referred to as per- and polyfluoroalkyl substances). PFAS from firefighting foam, personal products, and other sources can get into water, especially groundwater, and contaminate drinking water supplies. These chemicals have created an emerging, urgent public health challenge requiring enhanced action to avoid future contamination and ensure safe drinking water for all Coloradans. This action plan outlines how we will minimize new contamination and respond to any communities where these chemicals are found at levels that could affect health.

### What is the concern?

PFAS chemicals are a challenge nationally and in Colorado, as they have been discovered in groundwater in El Paso County, South Adams



Firefighting foam used on petroleum fires is a leading source of toxic foam releases. Not all fire fighting foam contains PFAS. We plan to coordinate with fire departments to make sure the safest foam is used in order to continue to serve and protect all Coloradans.

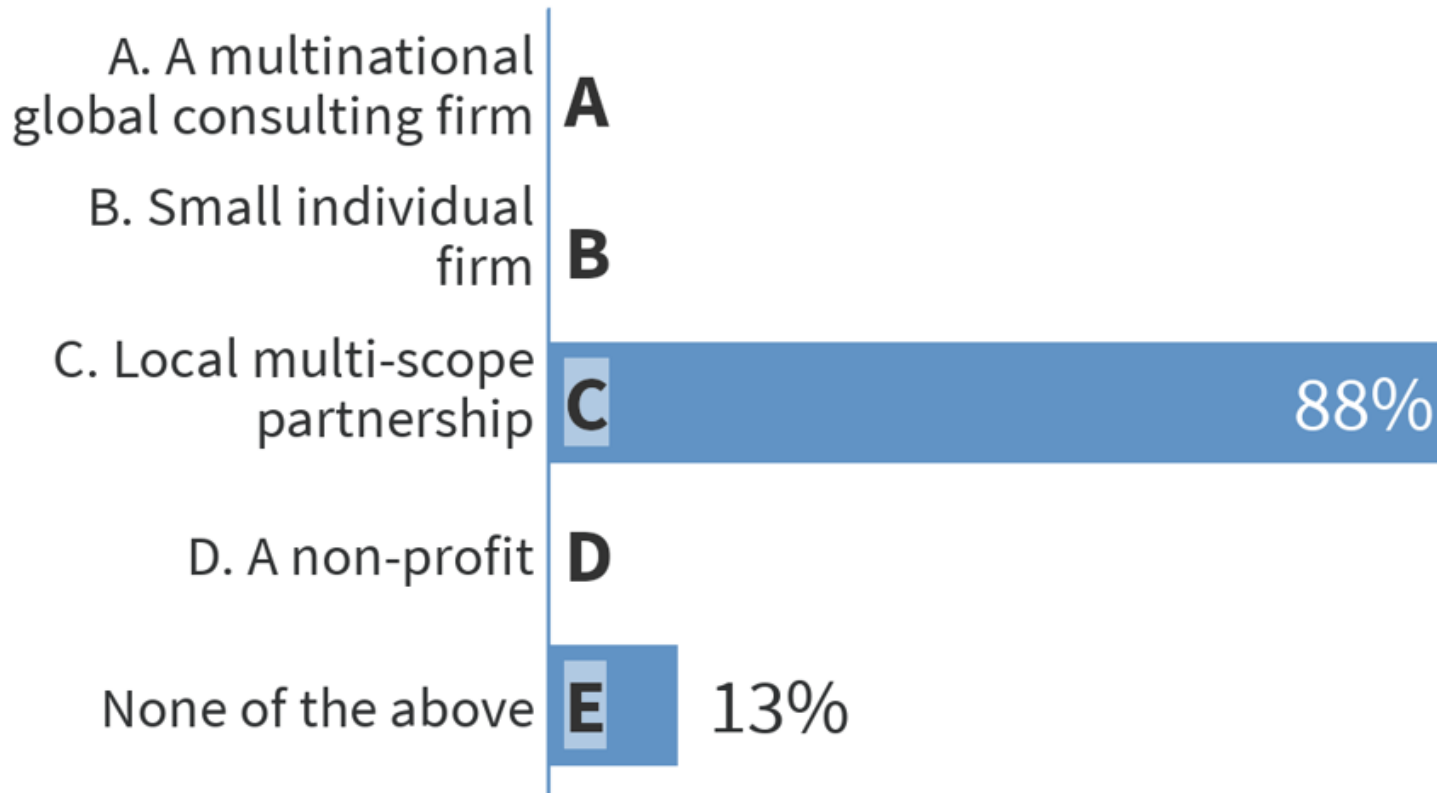
## Boulder Creek and St. Vrain Creek Coordinated Watershed Monitoring Framework



Prepared for  
Keep It Clean Partnership  
Prepared by  
Wright Water Engineers, Inc.  
Version 1.1, September 2015

# Public Engagement

## Who Should Commerce City Select for the Environmental Consulting RFP?



# — Costing Approach

1. Identify ranges and assumptions
2. Provide options
3. Submit task order
4. Manage to budget
5. Leverage lower cost resources when possible
6. Identify supplemental funding when appropriate



# — Pricing Example Ranges

## ➤ Environmental Policy

- Community-wide energy reduction strategies (\$10K-\$50K)
- Environmental indicators / success metrics (\$20K-\$150K)

## ➤ Air Quality

- Oil & Gas site air quality plan review (up to \$5K)
- Develop air quality planning documents (\$25K-\$50K)
- Air quality monitoring program implementation (TBD, case-by-case basis due to high number of factors)

## ➤ Water Quality

- Point source and non-point source pollution causes, groundwater quality assessment, policy recommendations and remediation strategies (\$10K-\$50K)
- Development of a water quality monitoring plan (\$7.5K-\$20K)

# Additional Items/ Differentiators

- Integration into regional efforts
- Small, local firms
- Capacity and depth
- Planning background
- Flexibility
- Responsiveness





# Q & A





**SPIRIT**  
ENVIRONMENTAL

**THANK YOU!**



**Air Resource**  
SPECIALISTS

**WWE**  
WRIGHT WATER  
ENGINEERS, INC.