

# Rocky Mountain Recycling

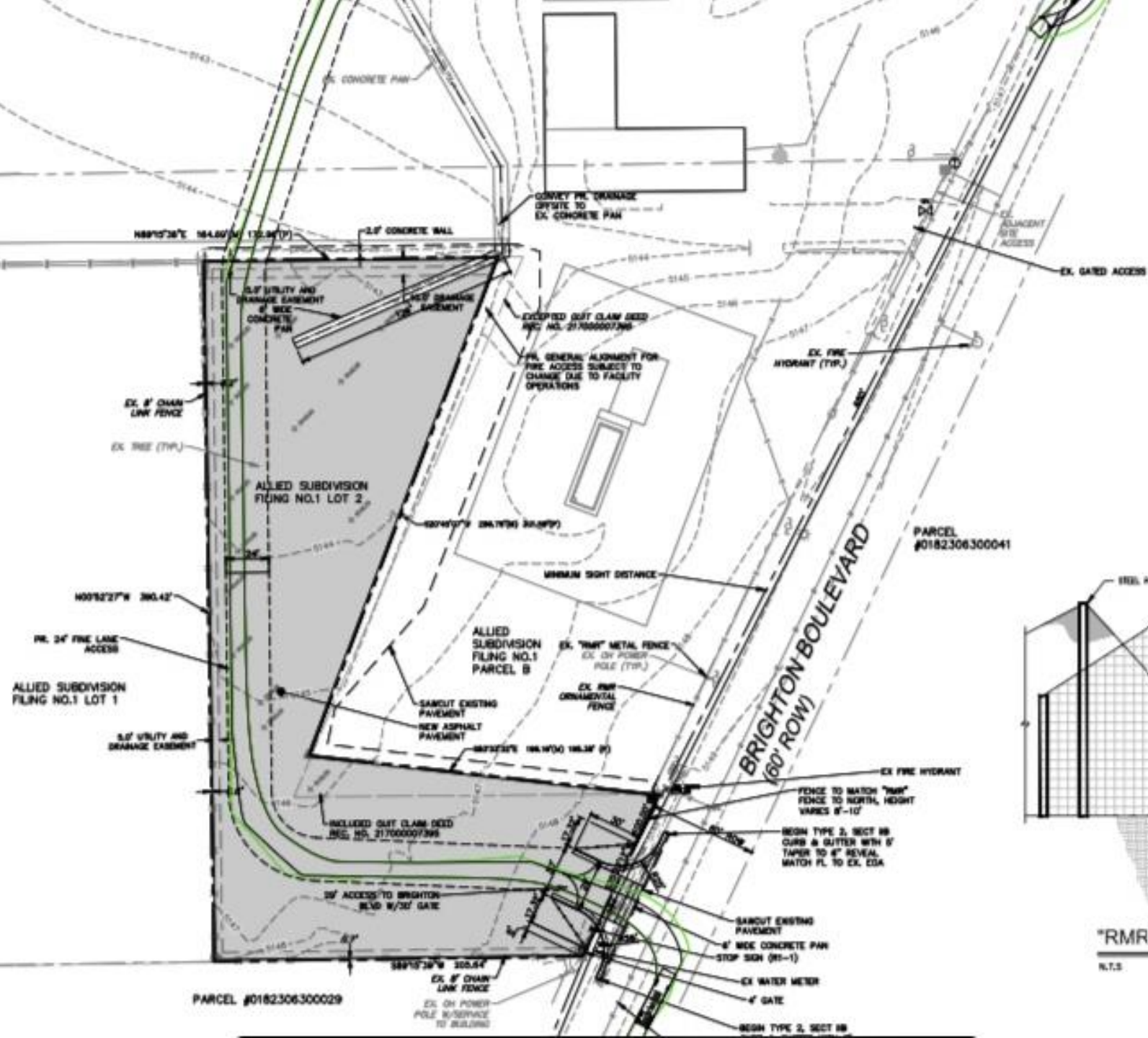
Commerce City – CUP 23-0001



# Rocky Mountain Recycling



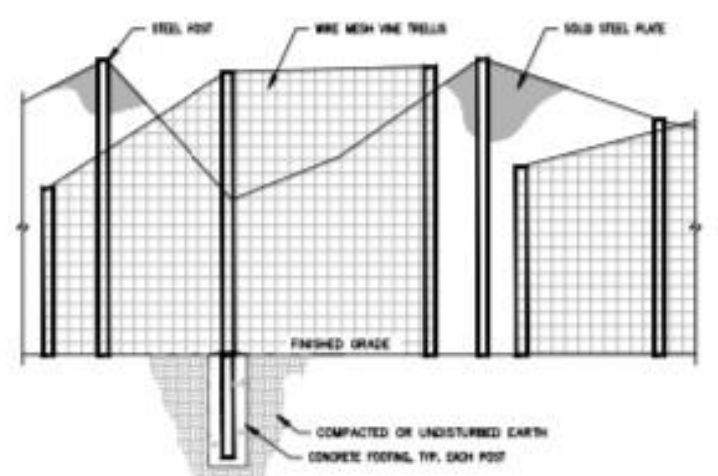
- A Commerce City business for over 50 years
- Provides Recycling services for all of Colorado
- Millions of tons of material diverted from landfills
- Employs nearly 80 people, most are local residents
- Expanding our operations to make them more sustainable, safer, environmentally friendly, and more efficient.



12. REFER TO APPROVED CDOT ACCESS PLAN FOR SITE ACCESS DETAILS AND DESIGN. ACCESS SHOWN HEREON IS FOR REFERENCE ONLY.
13. A CLEAR 24-FOOT DRIVE LANE SHALL BE PROVIDED AND BE KEPT CLEAR OF DEBRIS, PARKING AND INTERCONNECT WITH THE ADJACENT LOT TO ALLOW FOR EMERGENCY RESPONSE TO ENTER AND NAVIGATE THROUGH THE SITE. ACTUAL ALIGNMENT MAY VARY FROM THAT SHOWN HERE.

**ABBREVIATIONS**

BS/TS	BOTTOM & TOP OF STAIR
BM/TM	BOTTOM AND TOP OF MALL
CITY	CITY OF LAYETTE
ESMT	EASEMENT
ELEV	ELEVATION
EOA	EDGE OF ASPHALT
EX	EXISTING
FTE	FINISH FLOOR ELEVATION
FG	FINISHED GRADE
FL	FLOWLINE
FU	FUTURE
HP	HIGHPOINT
LP	LOWPOINT
ME	MATCH EXISTING
PR	PROPOSED
PVC	POLYVINYL CHLORIDE PIPE
RCP	REINFORCED CONCRETE PIPE
REF	REFERENCE
TB	THRUST BLOCK
TC	TOP OF CURB
UE	UTILITY EASEMENT
VC	VERTICAL CURB
W/	WITH



**"RMR" FENCE TYPICAL DETAIL**

N.T.S.

# Rocky Mountain Recycling



## What we are Requesting:

**An extension of the same operating conditions from our existing site to the new expansion area.**

**An extension of the existing fence along Brighton Blvd in the same manner.**





## Rocky Mountain Recycling – Brighton Blvd Fencing

- Landscaped fencing & gates (Xeriscaped) with recycled steel, trellis with Trumpet vines, large decorative boulders, drip-irrigation, sustainable, safe, secure, noise and dust barrier, with variable heights in a 'Rocky Mountain' design.

