



Presentation on E. 68th Avenue/Brighton Boulevard On-ramp to Vasquez Boulevard and other Mobility Topics

March 25, 2024 City Council Study Session

Presentation Overview

- Introductions
 - City Staff
 - CDOT
- Existing Conditions
 - Roadway Geometry
 - Data Collection
- Options for Consideration
- E. 68th Avenue CIP Project
- Next Steps
- Questions

Introductions

- City Staff
 - Shawn Poe, PE, CFM, City Engineer
 - Michael Renk, PE, Transportation & Mobility Manager
 - Gerardo Martinez, Transportation Engineer/Planner
- CDOT Staff
 - Stephen Henry, PE, Region 1 North Program Engineer
 - David Merenich, PE, I-270 Program Director

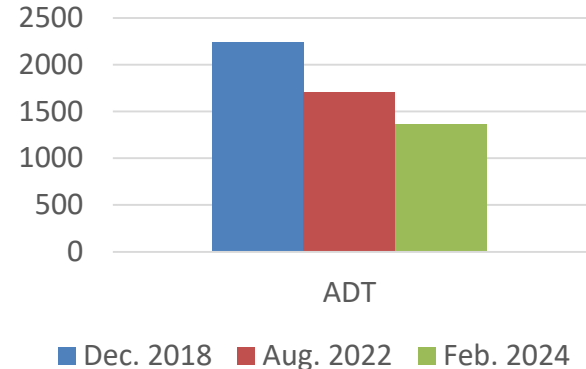
Roadway Geometry



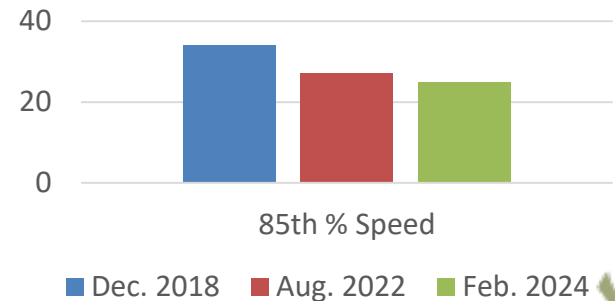
E. 68th Avenue Data

- Feb. 2024 at E. 68th /Ash:
 - ADT = 1,357
 - 85th Percentile Speed =25 mph
- Aug. 2022 at E. 68th/Albion
 - ADT = 1,705
 - 85th Percentile Speed = 27 mph
- Dec. 2018 at E. 68th/Clermont
 - ADT = 2,238
 - 85th Percentile Speed = 34 mph (prior to traffic calming installations on 68th Avenue
- Trends – ADT and speeds have shown decreases on E. 68th Avenue

Average Daily Traffic

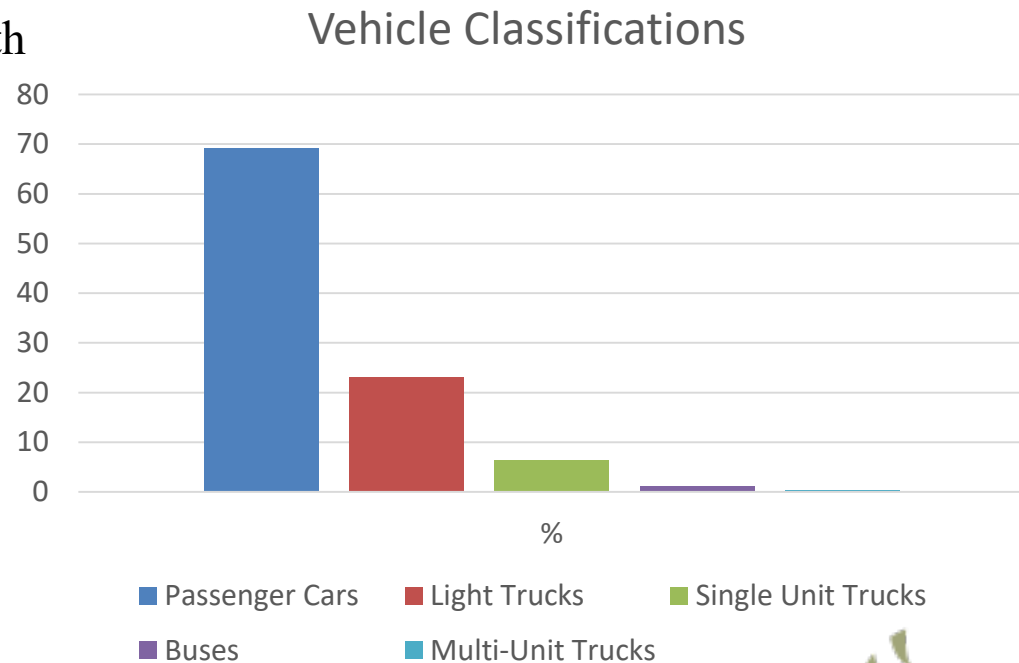


85th Percentile Speed



E. 68th Avenue Data

- Vehicle Classifications
(% of traffic volume)
- Aug. 2022 Data at E. 68th
Avenue/Albion
 - Passenger Cars +
Motorcycles (69.1%)
 - Light Trucks/Vans
(23.0%)
 - Single Unit Trucks
(6.3%)
 - Buses (1.2%)
 - Multi-Unit Trucks
(0.4%)



On Ramp to SB US 85 Data

- Sept 2023 – On-ramp Traffic
- Vehicle Classifications (% of traffic volume)
 - Passenger Cars/Motorcycle (70.9%)
 - Light Trucks/Vans (22.6%)
 - Single Unit Trucks (4.9%)
 - Buses (1.1%)
 - Multi-Unit Trucks (0.5%)
- ADT (weekday) = 950
- Highest Hourly Volumes
 - 8am-9am = 74
 - 3pm-4pm = 99

Options for Consideration

- Adams 14 uses on-ramp for busing operations from Alsup Elementary to Vasquez Boulevard
- CDOT has obtained feedback from internal divisions
- Options include:
 - Temporary closing on-ramp to monitor traffic operations to determine next course of action
 - Permanently close on-ramp
 - Construct temporary median on E. 68th Avenue to provide a right in/right out condition and monitor traffic operations to determine next course of action
 - Construct a permanent median on E. 68th Avenue to provide a right in/right out.

E. 68th Avenue Multimodal CIP Project

- Revitalizing Main Street grant obtained from CDOT in the amount of \$1,420,800. City match is \$355,200 for a total project budget of \$1,776,000.
- Scope of project includes:
 - Narrow roadway width
 - Intersection bulb outs (curb extensions)
 - Adding widened sidewalks on both sides of the roadway
 - New crosswalks
 - Rectangular Rapid Flashing Beacons (RRFB)
 - Reconstructed ADA compliant curb ramps
 - Lane restriping
 - New street lighting
 - Drainage improvements

E. 68th Avenue Multimodal CIP Project

- Schedule
 - RFP being developed for engineering design
 - Anticipate advertising RFP in March
 - Design begin in June 2024 and be completed in March 2025 (9-month schedule)
 - Bidding for the construction work would take place in April 2025
 - Construction anticipated to begin in July 2025 with a completion timeframe of April 2026

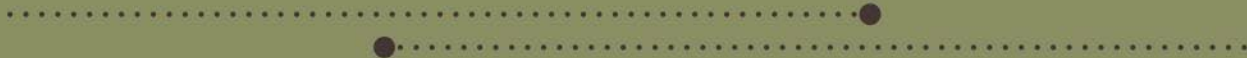
Next Steps

- Discuss options
- Staff direction
- Implementation





Questions?





Safe Routes to School Update

.....●
●.....
March 25, 2024 City Council Study Session

Update

- Next call for projects is anticipated to be in August 2024 by CDOT
- Staff proposes to submit four projects:
 - E. 120th Avenue sidewalk from west of Chambers Road to 27J School sites (partnership with Adams County and City of Brighton)
 - Sidewalk ramp replacements/upgrades at Kemp Elementary, Central Elementary, Rose Hill Elementary, Arnold High School, and Kearney Middle School areas. A total of 50 ramps replaced for a total of \$300,000.
 - Sidewalk replacement at Central Elementary along E. 64th Avenue (600 LF) and sidewalk replacement at Arnold High School along Quebec Street (575 LF). Central Elementary is to replace severely damaged sidewalk and Lester Arnold is to upgrade to 4' width sidewalk from a substandard 3' width sidewalk. An estimated cost of \$100,000.
 - School Zone Flashing sign replacement in the core City. There are 20 signs that would be candidates for replacement at an estimated cost of \$400,000.
- Funding available for region is \$3M.





Questions?

