



Energy, Equity, and Environmental Division City Manager's Office E3 Q2 Update

Olivia Quagliani
Rosemarie Russo
Libby Tart

July 8, 2024

Purpose

Provide E3 2Q Update including community engagement (training, challenges, website updates); awards, measures that matter; and grants (e.g., Healthy Home; IRA and Community Change).



Date	Media Impact	Location/Unit	Summary	Permit Limit	Exceedance	Community Impact
8-Jun	Water	Wastewater Treatment Plant, Outfall 020	The temperature of the wastewater discharged at Outfall 020A exceeded the daily maximum limit	daily maximum temperature from Outfall 020A during month of June to be less than 29.5 (85.1 °F) degrees Celsius	daily Maximum temperature: 30.4 degrees Celsius or 86.7 Fahrenheit (4.5 hours)	NA
31-May	Water	Wastewater Treatment Plant, Outfall 020	The sample was tested for Total Inorganic Nitrogen (TIN), which is the sum of ammonia (NH3), Nitrite (NO2), and Nitrate (NO3). of TIN.	Daily maximum concentration of 14 mg/L Total Inorganic Nitrogen (TIN) of 10 mg/L from outfall 020A	5/31/2024 – Daily Maximum TIN: 12 6/3/2024 Daily Maximum TIN: 6/4/2024 - Daily Maximum TIN: 12	NA
29-May	Air	Plant 1 - Main Flare	The startup of the unit resulted in excess steam being sent to the flare, but as the NHVcz controller was placed in manual, not enough natural gas was sent to the flare to ensure compliance.	>270 btu/scf	<270 btu/scf	CCNDAM - NOT TRIGGERED
24-May	Air	Plant 1 No 3 HDS	Plant 1 No. 3 HDS was restarted following a loss of electrical power. During startup the Amine Regenerator Tower experienced a foaming event preventing the regeneration of amine, which caused the hydrogen sulfide (H2S) concentrations within the fuel gas system to rise above the limit.	162 ppmv H2S	185 ppmv	CCNDAM - NOT TRIGGERED
May 21 to 22	Air	Plant 1 Main Plant Flare and Tail Gas Incinerator	Substations No. 8 and No. 16 experienced a loss of electrical power. During the time that units were offline, hydrogen sulfide (H2S) rich gases were routed to the Plant 1 Main Plant Flare and the sulfur recovery unit incinerator (H-25). When H2S is combusted, it is oxidized into SO2.	162 ppmv H2S 15.68 lb/hr SO2	233 ppmv 24.1 lb/hr	CCNDAM - NOT TRIGGERED

Sustainability Focus Areas and Priorities

Education and Empowerment

Energy Efficiency & Renewables

Adaptation & Mitigation

Waste Diversion & Recycling

Water Conservation and Quality

Active Transportation

Health and Well-Being

Funding and Purchasing

Local Food Resiliency

Tree Canopy and Biodiversity

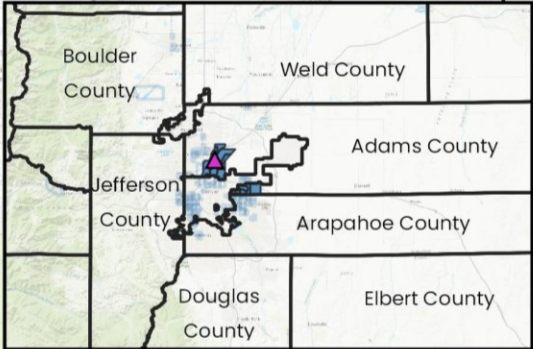


BPUF/C3 - \$17,150,021

- Climate Action Plan
- Pollution Reduction Plan
- Community Engagement and Collaborative Governance (14 Partners) Plan
- Readiness Approach Plan
- Compliance Plan

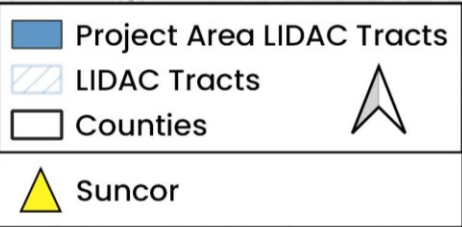
Evaluation Criteria: community driven investment; program management; readiness; and oral presentation

Adams County

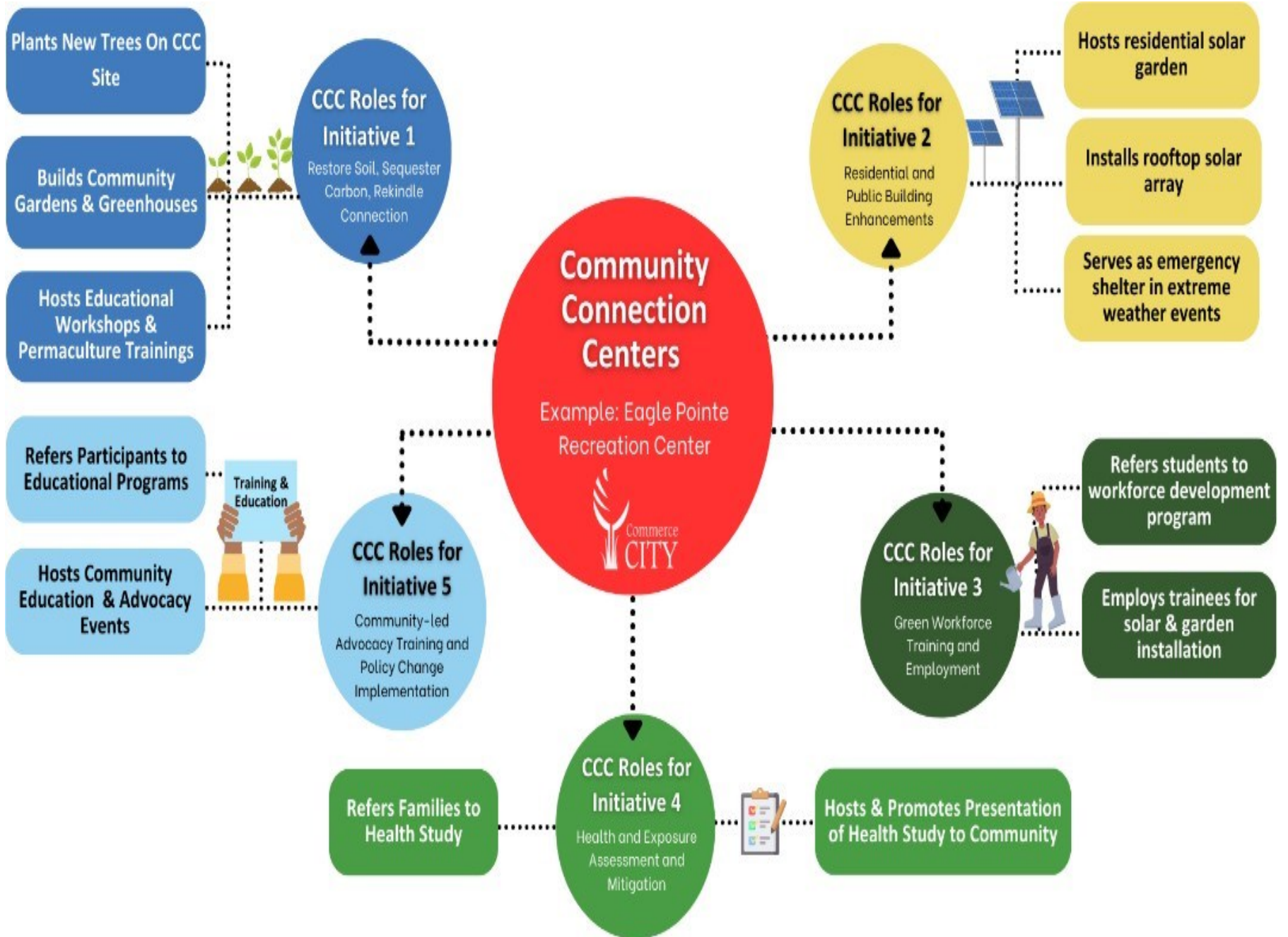


Rocky Mountain Arsenal
National Wildlife Refuge

Commerce City



Aurora



Funding: Grants & Awards



Awarded -

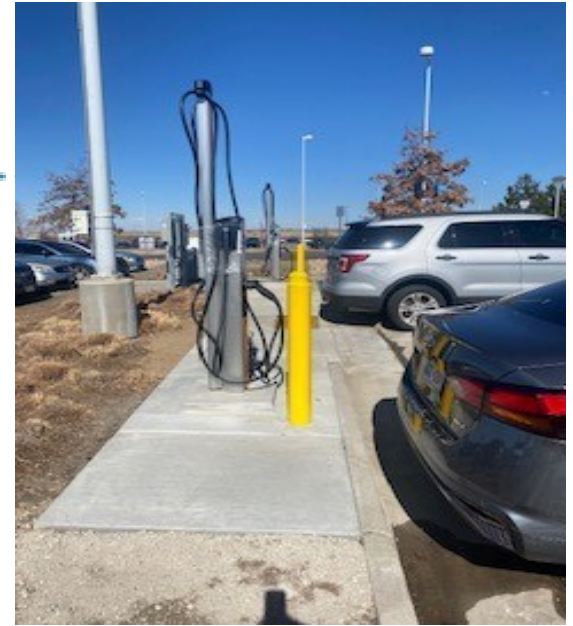
- Healthy Homes

- WaterNow: Technical C3 & SACWSD

In Progress: IRA: Tree Canopy; Stewarts; Events

* Adams County may submit an application (EPAC)

Electric Vehicle Adoption Leadership (EVAL) Award



C3 received Bronze level for the Electric Vehicle Adoption Leadership Certification.

To create cleaner commuting options for our team and community, we installed 6 electric vehicle chargers across 3 City owned buildings.

Joined the ranks of EVAL Certified Organizations:

Civic Center: 2

Eagle Pointe Recreation Center: 2

Bison Ridge Recreation Center: 2



Colorado Green Business Network Grant & Application

- Commerce City Civic Center – Bronze Level
- Reapplying for 2024 under Commerce City Administrative Buildings (Civic Center, Bison Ridge, Eagle Pointe) for Silver Level
- The application requires baseline year (2019) measures and current year (2023) for water usage, land, electricity, GHG emissions, waste
 - We now have data from 2019-2024 in each of these sectors

The Small Business Equity Fund Program

Supporting Colorado businesses in increasing efficiency, and improving the sustainability of their operations!

The [Small Business Equity Fund](#) is a grant program that provides funding to small businesses interested in implementing energy efficiency upgrades. The program focuses in disproportionately impacted communities and it is currently open to Aurora and Commerce City businesses.

The program offers the following upgrades up to a combined \$10,000 per business, for all qualifying projects:

- Free installation of LED indoor/outdoor lighting, cooler/case lighting, and other small energy upgrades as applicable. The program covers 100% of the cost of these installations.
- Upfront coverage of up to 70% of the cost of replacing old commercial refrigeration equipment (freezers and refrigerators). Costs include equipment purchase, delivery, and proper recycling.



Interested?
Scan to apply and
to learn more!



Who we've helped!



Piramides Mexican Restaurant (2023 program participant) Upgraded an old freezer with an Energy Star unit, replaced indoor lights with LEDs, and installed an occupancy sensor. The program awarded \$5,364 to support this efficiency project.

Eligibility*

- The business is in Aurora or Commerce City.
- The business has operated for 2 years or longer.
- The business pays its utility bills.
- The business has an updated registration with the IRS ([W-9 form](#)).
- The business is registered and in "good standing" with the [Colorado Secretary of State website](#).

*Please note that this is not a complete list of the program's eligibility criteria. Visit the [Small Business Equity Fund website](#) to find out more about eligibility.

We will assess applicants according to eligibility on a first come first serve basis while funds last. The application closes on August 1, 2024.

Contact us

If you have questions or need support, contact us at cdphe.greenbusiness@state.co.us or (720) 968-0366. We provide assistance in English and Spanish.



Revised 11/06/2023

Q2 Education & Engagement

Mindful Movie, Challenge, Book, Webinar, Tours, Lunch and Learns, Community Events

- Earth Day, April 22 – Gave out ~85 tree seedlings & 50 seed packets & other resources
- Food Resilience Lunch and Learn, May 14
- Mindful Movie
- Home Resources Expo
- Adams County Pride Festival
- Mindful Movie

Q2: 351 Attendees

YTD: 879 Attendees



Behavior Change – Local Control

Cards are on the c3gov.com/E3 webpage, Eagle Pointe, & Bison Ridge for all to participate –

Email or drop off the completed card at the end of the month to be entered into a monthly raffle

E3 calculates cumulative impacts



July Sustainability Challenge *Health, Equity, and Well-Being*



Check off which activities you tried for the month of July.	Annual Environmental Savings	Annual Economic Savings	Impact
1. Buy local produce directly from the farm, Farmers Market, or Food Coop 4x/month.	1,048 lbs CO ₂ e	\$131	Preserves agriculture land and farming livelihood
2. Take a mental health day and turn off your TV.	102 lbs CO ₂ e 107 kWh	\$16	Reduces anxiety and stress
3. Support restaurants that use local food 4x/month.	744 lbs CO ₂ e	\$186	Increases local demand
4. Compost food waste or use green cone.	570 lbs CO ₂ e	\$34	Diverts waste
5. Go one day without your computer.	572 lbs CO ₂ e 600 kWh	\$90	Improves your mood



Julio Desafío de Sostenibilidad *Salud, equidad y bienestar*



Marque las actividades que ha realizado durante el mes de julio.	Ahorro ambiental anual	Ahorro económico anual	Impacto
1. Compra productos locales directamente en la granja, el mercado agrícola o la cooperativa alimentaria 4 veces al mes.	1,048 lbs CO ₂ e	\$131	Preservar las tierras agrícolas y los medios de subsistencia de los agricultores
2. Tómame un día de salud mental y apaga la televisión.	102 lbs CO ₂ e 107 kWh	\$16	Reduce la ansiedad y el estrés
3. Apoyar a los restaurantes que utilizan alimentos locales 4 veces al mes.	744 lbs CO ₂ e	\$186	Aumenta la demanda local
4. Composta los restos de comida o utiliza el cono verde.	570 lbs CO ₂ e	\$34	Desvía los residuos
5. Pasa un día sin tu ordenador.	572 lbs CO ₂ e 600 kWh	\$90	Mejora su estado de ánimo

Metric Measures (Jan – June 2024)

Sustainability Sector	Participants
Education/Outreach	64
Adaptation/Mitigation	43
Energy Efficiency	38
Water Conservations	34
Food Resiliency	36
Transportation	TBD
Total Participants (961)	215

	Economic	Environmental
Dollars Saved (\$76,446)	\$23,911	
Gallons of water conserved (2,915,190)		30,866
kWh of energy reduced (50,860)		13,090
Air pollution reduced CO2e lbs. (856825)		188,447

Partnerships – Well-Being and Transportation

Anythink Library & Greyhound Park – Bike Share

Signs and Safety Equipment



Electric Trucks – Republic



Partnerships – Food Resiliency

Anythink Library – Expansion Community Garden



Empowerment Project – Perennial Pollinator Mediation Garden Community Hub



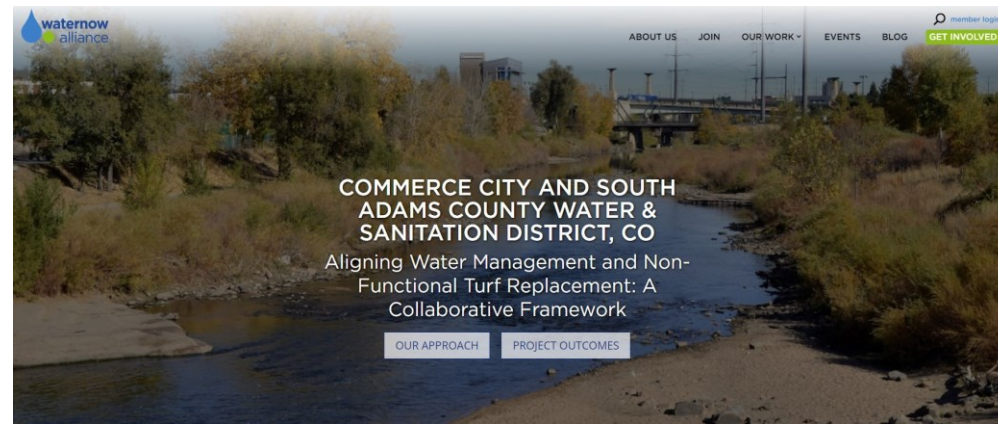
Water

In Q2, E3 has provided the following for C3 related water work:

- Water Team, Water Committee, and Water Commission meetings in March, April, and May;
- Liaising with SACWSD on matters related to water issuances and GID capacity fees;
- Attended tours and workshops the Cost of Water, Resource Central's Garden in a Box Analysis and 2024 WaterShed Summit;
- Xeric amendments and artificial turf amendments

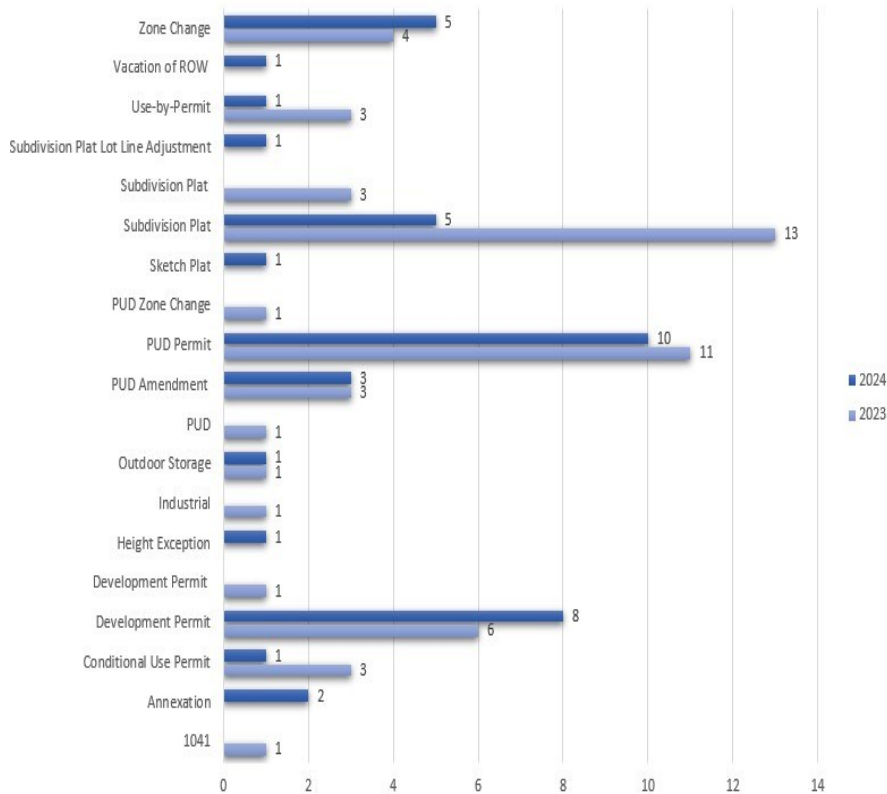


The Fulton Ditch and South Platte River from "The Cost of Water Tour"



Development and Building Reviews

E3 Environmental Reviews 2023-24



- 10 Priority Areas from the Sustainability Action Plan
- Flag applications for review with our regional partners like Adams County Health, CDPHE, and the EPA
- Sustainability Aspects of the Land Development Code
- 52 in 2023 and 40 in 2024

Development Review

Advocacy Comments :

- Enhanced Bicycle Parking (Covered/Designated/Lockers)
- Xeric Plant Material
- Pollinator Landscaping
- EV Infrastructure/Charging Stations (Conduit/Future Required Charging Stations)
- Solar
- Additional Bus Stops/Multi-Modal Transportation (Transportation Options and Improved Bus Stops)

Comments of Concern:

- Artificial Turf(Stormwater/Fire Codes/Waste Diversion)
- Engine Idling (Drop-Off/Drive-Thrus)
- Community Health Impacts
- Plugged and Abandoned Oil and Gas Wells (Flowlines and Buffers)
- Water Capacity/Infrastructure Concerns (Pressure Zones/Infrastructure)



Thank you ! Questions ?

